


IBOCO® Wire Duct – Slotted

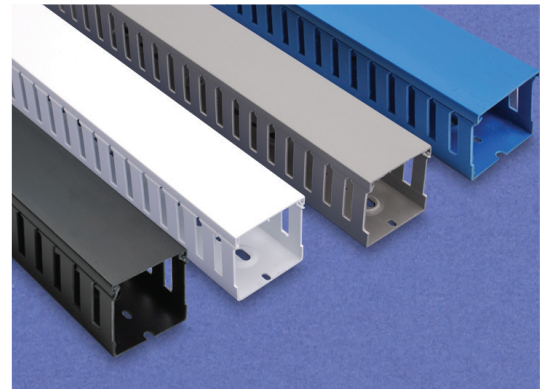
Rigid PVC - Open Slot - Wide Finger Wall T1 Series

Overview

Rugged wire duct is made of rigid PVC that carries a UL 94V-0 flammability rating for your wire containment needs. Our wire duct comes in 6.56 ft [2m] or 3.28 ft [1m] lengths, complete with cover. Replacement duct covers can be purchased separately.

Features

- Standard mounting holes
- Wide finger design provides greater rigidity and larger slot width
- Rounded, burr-free edges will not cut installers' hands or wiring insulation
- Non-slip cover included
- Flush cover design holds 10–12% more wires than traditional designs
- Restricted slot design for fast and easy wire installation/removals
- Temperature range -15 to 50°C [5 to 122°F]
- Available in 6.56 ft [2m] or 3.28 ft [1m] lengths
- Two predetermined break lines, one for breaking off and removing the sidewall finger segments only, and another for removing the sidewall finger and base segments
- Rivets R6 and R4 may be used to mount on panel
- Recess bosses in the base allow rapid mounting of wire retainers (CL series), inserts (ZP2) and separators (SEP series) inside the wire duct.
- Duct base perforation according to DIN 43659 and DIN VDE 0660 TEIL 506



UL Recognized file # E123572



Gray Open Slot T1 Series				
Part Number	Qty	Length ft [m]	Price	Drawing Link
T1-0506G-1	1	6.56 [2]	\$13.00	PDF
T1-0510G-1	1	6.56 [2]	\$14.50	PDF
T1-1010G-1	1	6.56 [2]	\$18.00	PDF
T1-1015G-1	1	6.56 [2]	\$22.00	PDF
T1-1022G-1	1	6.56 [2]	\$23.00	PDF
T1-1022G1-1	1	3.28 [1]	\$13.00	PDF
T1-1030G-1	1	6.56 [2]	\$28.00	PDF
T1-1030G1-1	1	3.28 [1]	\$16.00	PDF
T1-1040G-1	1	6.56 [2]	\$34.00	PDF
T1-1515G-1	1	6.56 [2]	\$24.00	PDF
T1-1522G-1	1	6.56 [2]	\$25.00	PDF
T1-1522G1-1	1	3.28 [1]	\$14.00	PDF
T1-1530G-1	1	6.56 [2]	\$30.50	PDF
T1-1530G1-1	1	3.28 [1]	\$17.00	PDF
T1-1540G-1	1	6.56 [2]	\$36.00	PDF
T1-2215G-1	1	6.56 [2]	\$25.00	PDF
T1-2222G-1	1	6.56 [2]	\$26.50	PDF
T1-2222G1-1	1	3.28 [1]	\$15.00	PDF

Cover included.

Gray Open Slot T1 Series				
Part Number	Qty	Length ft [m]	Price	Drawing Link
T1-2230G-1	1	6.56 [2]	\$34.00	PDF
T1-2230G1-1	1	3.28 [1]	\$19.00	PDF
T1-2240G-1	1	6.56 [2]	\$37.00	PDF
T1-2240G1-1	1	3.28 [1]	\$21.00	PDF
T1-3015G-1	1	6.56 [2]	\$34.00	PDF
T1-3022G-1	1	6.56 [2]	\$35.00	PDF
T1-3030G-1	1	6.56 [2]	\$40.50	PDF
T1-3030G1-1	1	3.28 [1]	\$22.00	PDF
T1-3040G-1	1	6.56 [2]	\$46.00	PDF
T1-3050G-1	1	6.56 [2]	\$61.00	PDF
T1-4015G-1	1	6.56 [2]	\$35.00	PDF
T1-4022G-1	1	6.56 [2]	\$38.50	PDF
T1-4030G-1	1	6.56 [2]	\$44.00	PDF
T1-4040G-1	1	6.56 [2]	\$53.00	PDF
T1-4040G1-1	1	3.28 [1]	\$29.00	PDF
T1-4050G-1	1	6.56 [2]	\$71.00	PDF
T1-6040G-1	1	6.56 [2]	\$84.00	PDF

Cover included.



IBOCO® Wire Duct – Slotted

Rigid PVC - Open Slot - Wide Finger Wall T1 Series (continued)

White Open Slot T1 Series				
Part Number	Qty	Length ft [m]	Price	Drawing Link
T1-1010W-1	1	6.56 [2]	\$18.00	PDF
T1-1015W-1	1		\$22.00	PDF
T1-1022W-1	1		\$23.00	PDF
T1-1030W-1	1		\$28.00	PDF
T1-1040W-1	1		\$34.00	PDF
T1-1515W-1	1		\$24.00	PDF
T1-1522W-1	1		\$25.00	PDF
T1-1530W-1	1		\$30.50	PDF
T1-1540W-1	1		\$36.00	PDF
T1-2222W-1	1		\$26.50	PDF
T1-2230W-1	1		\$34.00	PDF
T1-2240W-1	1		\$37.00	PDF
T1-3022W-1	1		\$35.00	PDF
T1-3030W-1	1		\$40.50	PDF
T1-3040W-1	1		\$46.00	PDF
T1-3050W-1	1		\$61.00	PDF
T1-4022W-1	1		\$38.50	PDF
T1-4030W-1	1		\$44.00	PDF
T1-4040W-1	1		\$53.00	PDF
T1-4050W-1	1		\$71.00	PDF
T1-6040W-1	1	\$84.00	PDF	

Cover included.

Blue* Open Slot T1 Series				
Part Number	Qty	Length ft [m]	Price	Drawing Link
T1-1010B-1	1	6.56 [2]	\$20.00	PDF
T1-1022B-1	1		\$26.50	PDF
T1-1030B-1	1		\$34.00	PDF
T1-1515B-1	1		\$26.50	PDF
T1-1522B-1	1		\$29.50	PDF
T1-1530B-1	1		\$36.00	PDF
T1-2215B-1	1		\$30.50	PDF
T1-2222B-1	1		\$30.50	PDF
T1-2230B-1	1		\$38.50	PDF
T1-3030B-1	1		\$47.50	PDF
T1-4030B-1	1		\$51.00	PDF
T1-4040B-1	1		\$61.00	PDF

Cover included.

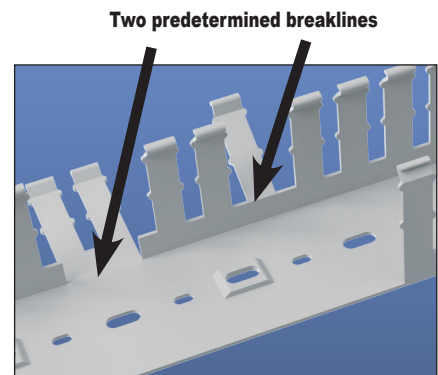
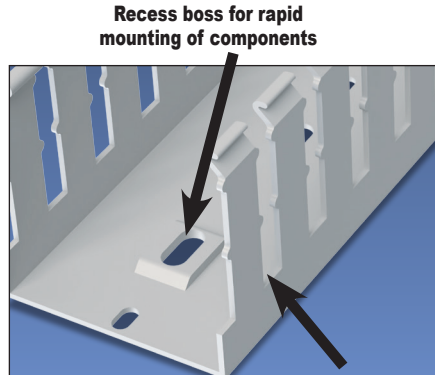
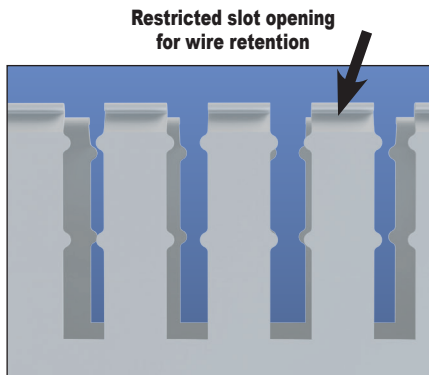
*Intrinsic Blue color per ISA-RD12.6 (Instrument Society of America).

Black* Open Slot T1 Series				
Part Number	Qty	Length ft [m]	Price	Drawing Link
T1-1040K-1	1	6.56 [2]	\$37.00	PDF
T1-1530K-1	1		\$35.00	PDF
T1-2222K-1	1		\$30.50	PDF
T1-2240K-1	1		\$43.00	PDF
T1-3030K-1	1		\$46.00	PDF
T1-3040K-1	1		\$52.00	PDF
T1-3050K-1	1		\$70.00	PDF
T1-4040K-1	1		\$60.00	PDF
T1-4050K-1	1		\$81.00	PDF

Cover included.

*Black color typically used to compliment the look of historically black telecommunications racks and hardware.

IBOCO® Wire Duct – Slotted

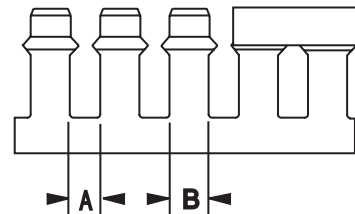
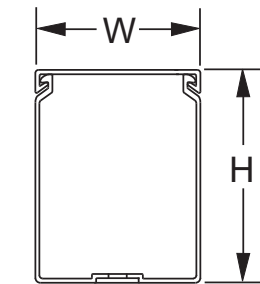


Burr-free edges

Rigid PVC - Open Slot - Wide Finger Wall - T1 Series Dimensions

Part Number	Actual Size (WxH) inches [mm]	Dimension A inches [mm]	Dimension B inches [mm]
T1-0506*	0.60 x 0.70 [15 x 18]	0.20 [5.08]	0.30 [7.62]
T1-0510*	0.60 x 1.18 [15 x 30]		
T1-1010*	1.00 x 1.18 [25 x 30]		
T1-1015*	1.00 x 1.57 [25 x 40]		
T1-1022*	1.00 x 2.36 [25 x 60]		
T1-1030*	1.00 x 3.15 [25 x 80]		
T1-1040*	1.00 x 3.94 [25 x 100]		
T1-1515*	1.57 x 1.57 [40 x 40]		
T1-1522*	1.57 x 2.36 [40 x 60]		
T1-1530*	1.57 x 3.15 [40 x 80]		
T1-1540*	1.57 x 3.94 [40 x 100]		
T1-2215*	2.36 x 1.57 [60 x 40]		
T1-2222*	2.36 x 2.36 [60 x 60]		
T1-2230*	2.36 x 3.15 [60 x 80]		
T1-2240*	2.36 x 3.94 [60 x 100]		
T1-3015*	3.15 x 1.57 [80 x 40]		
T1-3022*	3.15 x 2.36 [80 x 60]		
T1-3030*	3.15 x 3.15 [80 x 80]		
T1-3040*	3.15 x 3.94 [80 x 100]		
T1-3050*	3.15 x 4.92 [75 x 125]		
T1-4015*	3.94 x 1.57 [100 x 40]		
T1-4022*	3.94 x 2.36 [100 x 60]		
T1-4030*	3.94 x 3.15 [100 x 80]		
T1-4040*	3.94 x 3.94 [100 x 100]		
T1-4050*	3.94 x 4.92 [100 x 125]		
T1-6040*	5.91 x 3.94 [150 x 100]		

Dimensions



Note: Accessory bosses not present on 0.5 and 1.0 inch width duct.

*Color: *add suffix "G" for Light Gray, *add suffix "W" for White, *add suffix "B" for Blue, *add suffix "K" for Black

See previous pages for complete part numbers

IBOCO® Wire Duct – Slotted

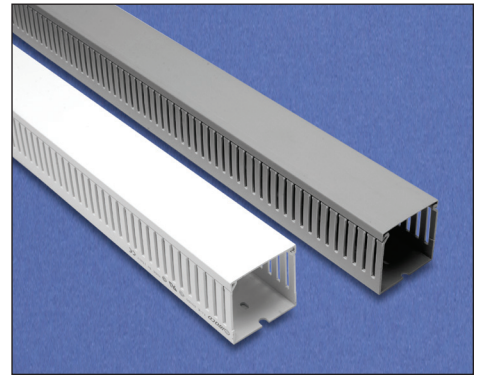
Rigid PVC - Open Slot - Narrow Finger Wall T1E Series

Overview

The T1E series of narrow-finger wire duct is made of rigid PVC that carries a UL 94V-0 flammability rating. Our wire duct comes in 6.56 ft [2m] or 3.28 ft [1m] lengths, complete with cover. Replacement duct covers can be purchased separately.

Features

- Standard mounting holes
- Narrow finger design for compact wiring configurations
- Rounded, burr-free edges will not cut installers' hands or wiring insulation
- Non-slip cover included
- Flush cover design holds 10–12% more wires than traditional designs
- Restricted slot design retains wires in slot for fast, easy wire installation or removal
- Temperature range -15 to 50°C [5 to 122°F]
- Available in 6.56 ft [2m] or 3.28 ft [1m] lengths
- Two predetermined break lines, one for breaking off and removing the sidewall finger segments only, and another for removing the sidewall finger and base segments
- Rivets R6 and R4 may be used to mount on panel
- Recess bosses in the base allow rapid mounting of wire retainers (CL series), inserts (ZP2) and separators (SEP series) inside the wire duct.
- Duct base perforation according to DIN 43659 and DIN VDE 0660 TEIL 506



UL Recognized file # E123572



Gray Open Slot T1E Series				
Part Number	Qty	Length ft [m]	Price	Drawing Link
T1E-1015G-1	1	6.56 [2]	\$22.00	PDF
T1E-1022G-1	1		\$23.00	PDF
T1E-1030G-1	1		\$28.00	PDF
T1E-1515G-1	1		\$24.00	PDF
T1E-1522G-1	1		\$25.00	PDF
T1E-1530G-1	1		\$30.50	PDF
T1E-1540G-1	1		\$36.00	PDF
T1E-2215G-1	1		\$25.00	PDF
T1E-2222G-1	1		\$26.50	PDF
T1E-2230G-1	1		\$34.00	PDF
T1E-2240G-1	1		\$37.00	PDF
T1E-3015G-1	1		\$34.00	PDF
T1E-3022G-1	1		\$35.00	PDF
T1E-3030G-1	1		\$40.50	PDF
T1E-3040G-1	1		\$46.00	PDF
T1E-4015G-1	1		\$33.00	PDF
T1E-4022G-1	1		\$38.50	PDF
T1E-4030G-1	1		\$44.00	PDF
T1E-4040G-1	1		\$53.00	PDF

Cover included.

Gray Open Slot T1E Series				
Part Number	Qty	Length ft [m]	Price	Drawing Link
T1E-1022G1-1	1	3.28 [1]	\$13.00	PDF
T1E-1030G1-1	1		\$16.00	PDF
T1E-1522G1-1	1		\$14.00	PDF
T1E-1530G1-1	1		\$17.00	PDF
T1E-2222G1-1	1		\$15.00	PDF
T1E-2230G1-1	1		\$19.00	PDF
T1E-2240G1-1	1		\$21.00	PDF
T1E-3030G1-1	1		\$22.00	PDF
T1E-4040G1-1	1		\$29.00	PDF

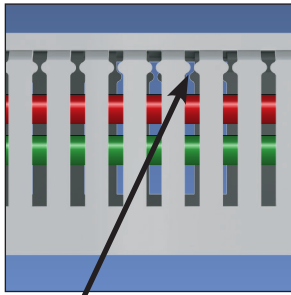
Cover included.

White Open Slot T1E Series				
Part Number	Qty	Length ft [m]	Price	Drawing Link
T1E-1015W-1	1	6.56 [2]	\$22.00	PDF
T1E-1022W-1	1		\$23.00	PDF
T1E-1030W-1	1		\$28.00	PDF
T1E-1515W-1	1		\$24.00	PDF
T1E-1522W-1	1		\$25.00	PDF
T1E-1530W-1	1		\$30.50	PDF
T1E-1540W-1	1		\$36.00	PDF
T1E-2222W-1	1		\$26.50	PDF
T1E-2230W-1	1		\$34.00	PDF
T1E-2240W-1	1		\$37.00	PDF
T1E-3022W-1	1		\$35.00	PDF
T1E-3030W-1	1		\$40.50	PDF
T1E-3040W-1	1		\$46.00	PDF
T1E-4030W-1	1		\$44.00	PDF
T1E-4040W-1	1		\$53.00	PDF

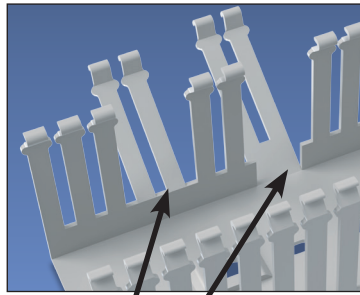
Cover included.

IBOCO Wire Duct – Slotted

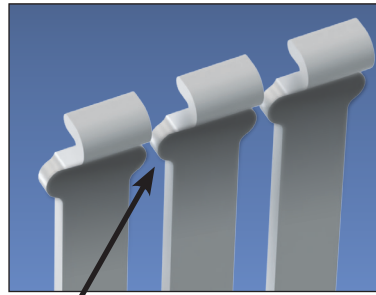
Rigid PVC - Open Slot - Narrow Finger Wall T1E Series



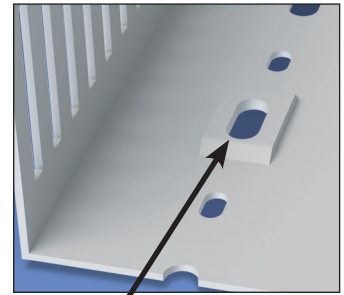
Restricted slot opening for wire retaining



Two predetermined breaklines

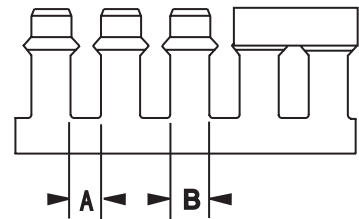
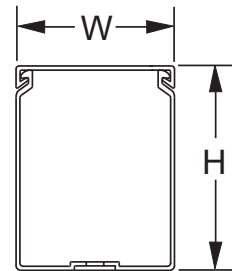


Burr-free edges



Recess boss for rapid mounting of components

Dimensions



Rigid PVC - Open Slot - Narrow Finger Wall T1E Series Dimensions			
Part Number	Actual Size (WxH) inches [mm]	Dimension A inches [mm]	Dimension B inches [mm]
T1E-1015*	1.00 x 1.57 [25 x 40]	0.16 [4.06]	0.24 [6.10]
T1E-1022*	1.00 x 2.36 [25 x 60]		
T1E-1030*	1.00 x 3.15 [25 x 80]		
T1E-1515*	1.57 x 1.57 [40 x 40]		
T1E-1522*	1.57 x 2.36 [40 x 60]		
T1E-1530*	1.57 x 3.15 [40 x 80]		
T1E-1540*	1.57 x 3.94 [40 x 100]		
T1E-2215*	2.36 x 1.57 [60 x 40]		
T1E-2222*	2.36 x 2.36 [60 x 60]		
T1E-2230*	2.36 x 3.15 [60 x 80]		
T1E-2240*	2.36 x 3.94 [60 x 100]		
T1E-3015*	3.15 x 1.57 [80 x 40]		
T1E-3022*	3.15 x 2.36 [80 x 60]		
T1E-3030*	3.15 x 3.15 [80 x 80]		
T1E-3040*	3.15 x 3.94 [80 x 100]		
T1E-4015*	3.94 x 1.57 [100 x 40]		
T1E-4022*	3.94 x 2.36 [100 x 60]		
T1E-4030*	3.94 x 3.15 [100 x 80]		
T1E-4040*	3.94 x 3.94 [100 x 100]		

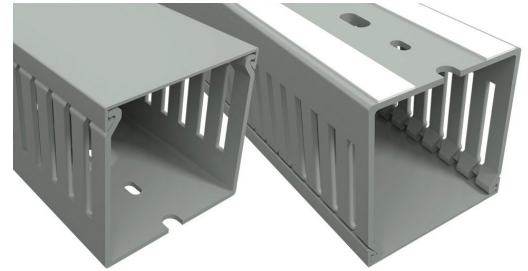
*Color: add suffix "G" for light Gray, add suffix "W" for White. (White only available in the 2m length.)
See previous page for complete part numbers.

IBOCO® Wire Duct – Slotted

Rigid PVC - Open Slot - Narrow Finger Wall Self-Adhesive -T1E Series

Overview

The T1E series of narrow-finger wire duct is made of rigid PVC that carries a UL 94V-0 flammability rating. Foam adhesive on duct provides a means of temporary positioning before fasteners are installed. Our wire duct comes in 6.56 ft [2m] lengths, complete with cover. Replacement duct covers can be purchased separately.



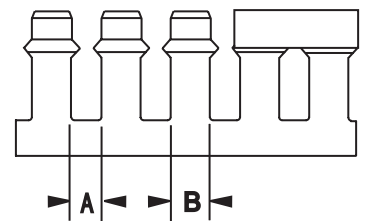
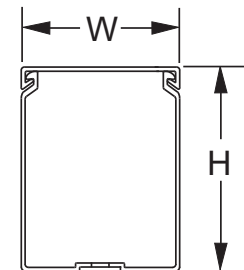
Features

- Standard mounting holes
- Narrow finger design for compact wiring configurations
- Rounded, burr-free edges will not cut installers' hands or wiring insulation
- Non-slip cover included
- Flush cover design holds 10–12% more wires than traditional designs
- Restricted slot design retains wires in slot for fast, easy wire installation or removal
- Temperature range -15 to 50°C [5 to 122°F]
- Available in 6.56 ft [2m] length
- Adhesive decreases installation time by holding position while the installer secures the wiring duct with fasteners or rivets
- Foam adhesive also provides a means to reposition the wiring duct for precision and optimize final placement
- Two predetermined break lines, one for breaking off and removing the sidewall finger segments only, and another for removing the sidewall finger and base segments
- Recess bosses in the base allow rapid mounting of wire retainers (CL series), inserts (ZP2) and separators (SEP series) inside the wire duct.
- Duct base perforation according to DIN 43659 and DIN VDE 0660 TEIL 506

UL Recognized file # E123572



Dimensions



Gray Rigid PVC - Open Slot - Narrow Finger Wall Self-Adhesive - T1E Series							
Part Number	Qty	Price	Actual Size (WxH) inches [mm]	Dimension A inches [mm]	Dimension B inches [mm]	Length ft [m]	Drawing Link
T1E-1022GA-1	1	\$26.00	1.00 x 2.36 [25 x 60]	0.16 [4.06]	0.24 [6.10]	6.56 [2]	PDF
T1E-1030GA-1	1	\$33.00	1.00 x 3.15 [25 x 80]				PDF
T1E-1522GA-1	1	\$29.00	1.57 x 2.36 [40 x 60]				PDF
T1E-1530GA-1	1	\$35.00	1.57 x 3.15 [40 x 80]				PDF
T1E-2222GA-1	1	\$31.00	2.36 x 2.36 [60 x 60]				PDF
T1E-2230GA-1	1	\$38.00	2.36 x 3.15 [60 x 80]				PDF
T1E-2240GA-1	1	\$43.00	2.36 x 3.94 [60 x 100]				PDF
T1E-3030GA-1	1	\$46.00	3.15 x 3.15 [80 x 80]				PDF
T1E-4040GA-1	1	\$61.00	3.94 x 3.94 [100 x 100]				PDF

Cover included.

Adhesive-Backed Tape Specifications		
Material	Carrier	Crosslinked polyethylene
	Adhesive	Rubber based
	Release Liner	Silicone coated paper
Applicable Mounting Surfaces		Paper, cardboard, wood, glass, ceramics, metal, rubber, and many plastics
Application Temperature		65 to 100°F [18 to 38°C]
Service Temperature		-20 to 150°F [-28 to 65°C]
Thickness		0.031 in [0.787 mm]
Foam	Density (typical)	4.5-5.5 lb/ft ³
	Test Method	ASTM D3575
Adhesive	180° Peel Adhesion	8.0 lb/in minimum (typical)
	Test Method	PSTC-101

Note: Make sure the surface is perfectly clean and dry before applying self-adhesive wire duct.

www.automationdirect.com

Wiring Solutions

tWIR-6

IBOCO® Wire Duct – Solid Wall

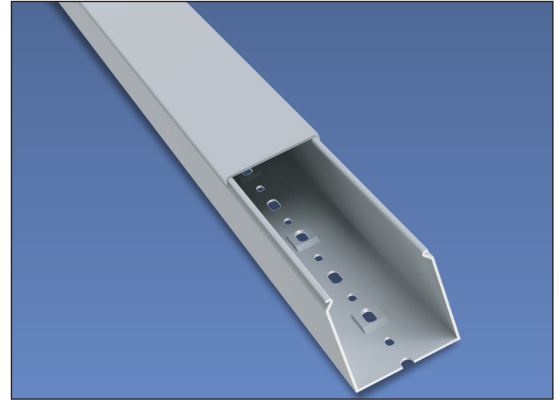
Rigid PVC - Solid Wall - TSH Series

Overview

With all the standard features of the T1 Series slotted wire duct, TSH series solid wall wire duct is made of rigid PVC that carries a UL 94V-0 flammability rating. It is available in 6.56 ft [2m] length and supplied complete with cover, and replacement covers can be purchased separately.

Features

- Standard mounting holes
- Non-slip cover
- Flush cover design holds 10–12% more wires than traditional designs
- Rivets R6 and R4 may be used to mount on panel
- Recess bosses in the base allow rapid mounting of wire retainers (CL series), inserts (ZP2) and separators (SEP series) inside the wire duct.
- Duct base perforation according to DIN 43659 and DIN VDE 0660 TEIL 506



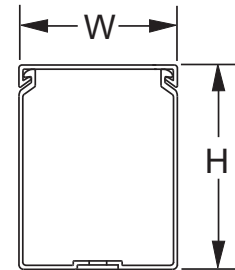
UL file E123572



Gray Rigid PVC Solid Wall - TSH Series					
Part Number	Qty	Price	Actual Size (WxH) inches [mm]	Length ft [m]	Drawing Link
TSH-0506G-1	1	\$16.50	0.60 x 0.71 [15 x 18]	6.56 [2]	PDF
TSH-1010G-1	1	\$20.50	1.00 x 1.18 [25 x 30]		PDF
TSH-1015G-1	1	\$25.50	1.00 x 1.57 [25 x 40]		PDF
TSH-1515G-1	1	\$28.00	1.57 x 1.57 [40 x 40]		PDF
TSH-2222G-1	1	\$31.50	2.36 x 2.36 [60 x 60]		PDF
TSH-2230G-1	1	\$38.50	2.36 x 3.15 [60 x 80]		PDF
TSH-3030G-1	1	\$49.00	3.15 x 3.15 [80 x 80]		PDF
TSH-4040G-1	1	\$62.00	3.94 x 3.94 [100 x 100]		PDF

Cover included.

Dimensions




IBOCO Wire Duct – Slotted

Wire Fill Capacity

T1, T1E, TSH Series Wire Fill Capacity						
Nominal Duct Size (inches)	Wire Gauge					
	12AWG	14AWG	16AWG	18AWG	22AWG	
	Insulation Thickness					
	1/32	3/64	1/32	1/32	1/32	1/64
	OD-0.158	OD-0.165	OD-0.139	OD-0.125	OD-0.113	OD-0.065
Recommended Maximum Number of Wires per Wire Duct (based on 50% fill capacity)						
1/2 x 5/8	7	6	9	11	14	43
1/2 x 1	12	11	16	20	24	74
1 x 1	22	21	29	36	44	134
1 x 1 1/2	31	28	39	48	59	180
1 x 2 1/4	45	40	57	71	85	261
1 x 3	59	53	75	92	113	341
1 x 4	72	66	93	115	141	426
1 1/2 x 1 1/2	51	46	65	81	99	299
1 1/2 x 2 1/4	77	70	98	121	148	449
1 1/2 x 3	102	92	130	160	196	593
1 1/2 x 4	125	113	159	197	241	729
2 1/4 x 1 1/2	78	70	99	123	150	453
2 1/4 x 2 1/4	114	103	146	180	221	667
2 1/4 x 3	156	141	199	246	302	912
2 1/4 x 4	194	176	247	306	375	1132
3 x 1 1/2	105	95	134	165	203	612
3 x 2 1/4	159	144	203	251	307	928
3 x 3	214	193	272	337	412	1246
3 x 4	267	242	341	421	515	1558
3 x 5	309	283	399	493	604	1826
4 x 1 1/2	132	120	169	208	255	771
4 x 2 1/4	201	182	256	316	387	1171
4 x 3	270	244	344	425	520	1573
4 x 4	336	305	429	531	650	1963
4 x 5	415	381	536	663	812	2455
6 x 4	512	464	653	807	988	2987

IBOCO Wire Duct – Flexible

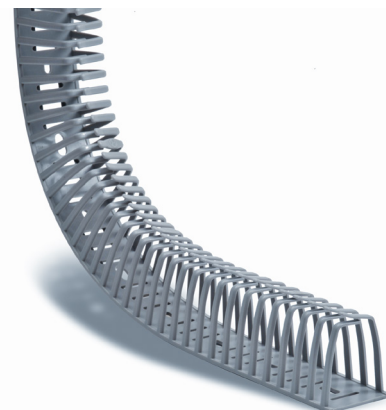
Polypropylene - Flexible - Self-Adhesive DN Series

Overview

Dinosaur self-adhesive flexible duct is ideal for transporting wiring to cabinet doors from control panel interiors (for that part of the cable run that leans against the side of the control cabinet) and for electronic equipment. It is resilient and can be bent and twisted without breaking. Manufactured from low-smoke, halogen-free polypropylene material that carries a UL 94V-0 flammability rating and CSA approval.

Features

- Easily add or remove individual wires from total wires within the duct
- Enclose and secure wiring or cables without requiring duct cover
- Convenient for applications requiring frequent access to wiring
- Easy addition or removal of wires after termination without special tools
- Use in extreme operating conditions (maximum temperature 176°F [80°C])
- Withstands mechanical stress when installed (i.e. earthquake, falling equipment)
- Cut to desired length using scissors or knife
- Rivet R4 may be used to mount on panel
- Duct base perforation according to DIN 43659 and DIN VDE 0660 TEIL 506



UL Recognized file # E123572



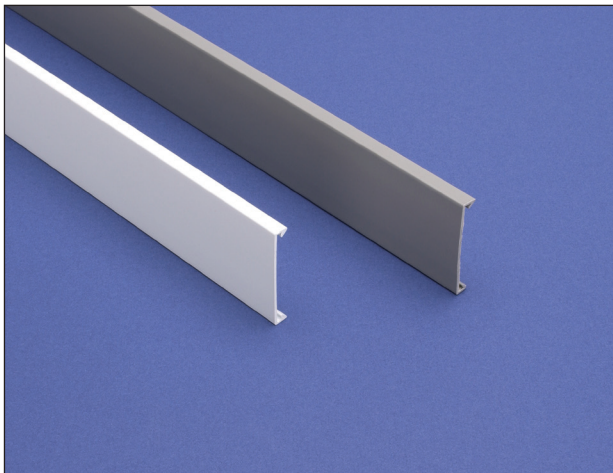
Gray Flexible, Self-Adhesive DN Series						
Part Number	Qty	Price	(Width x Height) inches [mm]	Length per piece inches [mm]	Total Actual Length ft [m]	Drawing Link
DN25AG	24	\$152.00	0.50 x 0.75 [12.7 x 19.05]	19.7 [500]	39.37 [12]	PDF
DN25AG-1	1	\$8.25			1.64 [0.5]	
DN35AG	24	\$214.00	1.00 x 1.38 [25.4 x 35.05]		39.37 [12]	PDF
DN35AG-1	1	\$11.00			1.64 [0.5]	
DN45AG	14	\$167.00	1.38 x 1.75 [35.05 x 44.45]		22.96 [7.0]	PDF
DN45AG-1	1	\$14.50			1.64 [0.5]	

Adhesive-Backed Tape Specifications	
Material	Double coated PET film backing, modified acrylic adhesive
Applicable Mounting Surfaces	Paper, cardboard, wood, glass, ceramics, metal, rubber, and many plastics
Recommended Tape Application Temperature	65 to 95°F [18 to 35°C]
Thickness	0.2 mm

Note: Make sure the surface is perfectly clean and dry before applying self-adhesive wire duct.

Wire Fill Capacity						
Nominal Duct Size (inches)	Wire Gauge					
	12AWG	14AWG	16AWG	18AWG	22AWG	
	Insulation Thickness [inches]					
	1/32	3/64	1/32	1/32	1/32	1/64
	OD-0.158	OD-0.165	OD-0.139	OD-0.125	OD-0.113	OD-0.065
Recommended Maximum Number of Wires per Wire Duct (based on 50% fill capacity)						
1/2 x 1/2	6	5	7	9	11	33
3/4 x 3/4	13	12	6	20	25	75
1/2 x 3/4	8	8	11	13	16	50
1 x 1	23	21	29	36	44	133
1 x 1 3/8	31	28	40	50	61	183
1 1/2 x 1 1/2	51	46	65	81	99	299
1 3/8 x 1 3/4	54	50	70	87	106	321

IBOCO® Wire Duct – Covers



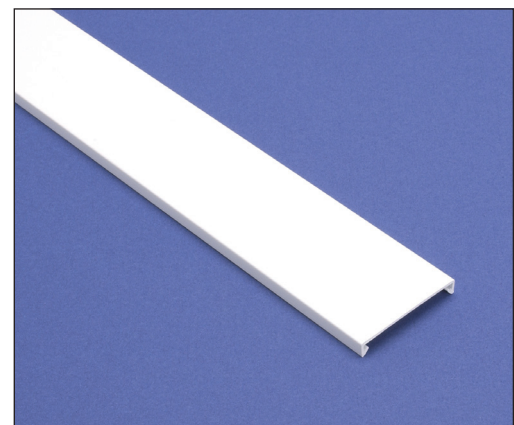
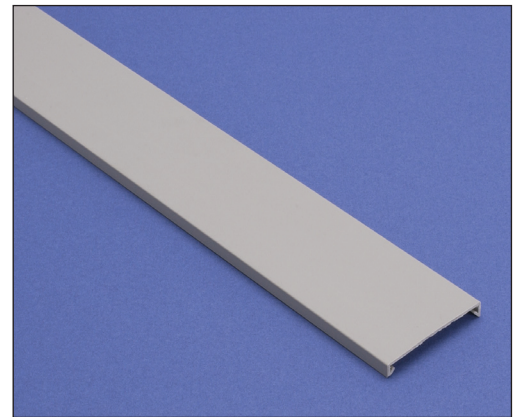
Duct Cover

Our standard wire duct products are supplied complete with covers. These replacement covers are manufactured from the same rigid self-extinguishing PVC material.

UL Recognized file # E123572



Duct Cover Specifications					
Part Number	Price	Description	Color	Qty	Actual Total Length ft [m]
COV-05G-1	\$5.00	Cover for 0.5" wide duct	Gray	1	6.56 [2]
COV-10G-1	\$5.00	Cover for 1.0" wide duct	Gray	1	
COV-10W-1	\$5.00	Cover for 1.0" wide duct	White	1	
COV-15G-1	\$6.50	Cover for 1.5" wide duct	Gray	1	
COV-15W-1	\$6.50	Cover for 1.5" wide duct	White	1	
COV-22G-1	\$8.25	Cover for 2.25" wide duct	Gray	1	
COV-22W-1	\$8.25	Cover for 2.25" wide duct	White	1	
COV-30G-1	\$12.00	Cover for 3.0" wide duct	Gray	1	
COV-30W-1	\$12.00	Cover for 3.0" wide duct	White	1	
COV-40G-1	\$14.50	Cover for 4.0" wide duct	Gray	1	
COV-40W-1	\$14.50	Cover for 4.0" wide duct	White	1	
COV-60G-1	\$28.00	Cover for 6.0" wide duct	Gray	1	
COV-60W-1	\$28.00	Cover for 6.0" wide duct	White	1	

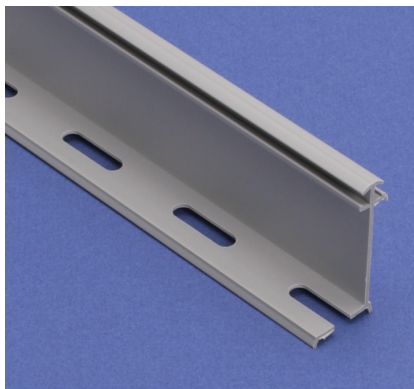


Note: Standard length of covers is 6.56 feet [2m] to fit T1, T1E, and TSH duct.

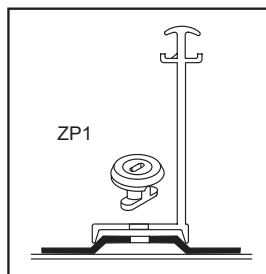
IBOCO® Wire Duct – Accessories

Duct Separators

Duct separators allow the physical separation of circuits within a single piece of duct. The various mounting arrangements allow alternate compartmentalization of duct and differing ratios of usable sections.



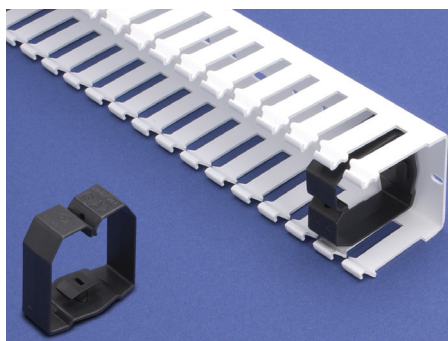
Duct Separators						
Part Number	Price	Description	Color	Qty	Length ft [m]	Drawing Link
SEP-15E-1	\$8.25	Separator for 1.5" high duct	Gray	1	6.56 [2]	PDF
SEP-22E-1	\$11.00	Separator for 2.25" high duct	Gray	1		PDF
SEP-30E-1	\$12.00	Separator for 3.0" high duct	Gray	1		PDF



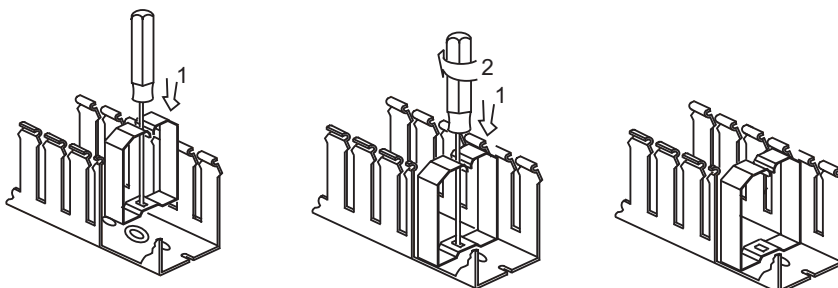
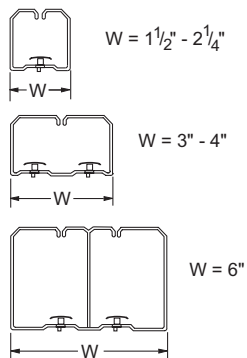
SEP-E Mounting Detail
Order **ZP1** mount separately

Wire Retainers

For holding wires during wiring operations, these retainers are essential. They allow easy access to the interior of the wire duct during maintenance or alterations, while assuring that wiring bundles will not fall out when the duct cover is removed. Installed with a simple rotating movement, they anchor firmly in the recess boss in the duct base.



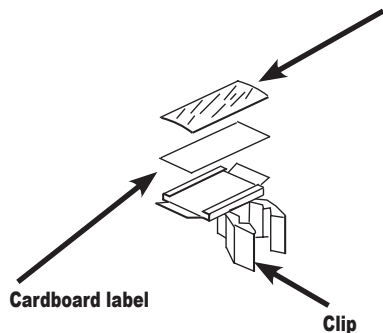
Wire Retainers				
Part Number	Price	Description	Color	Qty
CL-1515	\$69.00	Wire retainer fastener for 1.5 x 1.5" duct	Black	40
CL-1522	\$73.00	Wire retainer fastener for 1.5 x 2.25" duct		40
CL-1530	\$42.00	Wire retainer fastener for 1.5 x 3.0" duct		20
CL-2215	\$80.00	Wire retainer fastener for 2.25 x 1.5" duct		40
CL-2222	\$45.00	Wire retainer fastener for 2.25 x 2.25" duct		20
CL-2230	\$46.00	Wire retainer fastener for 2.25 x 3.0" duct		20
CL-2240	\$51.00	Wire retainer fastener for 2.25 x 4.0" duct		20
CL-3022	\$28.00	Wire retainer fastener for 3.0 x 2.25" duct		10
CL-3030	\$31.50	Wire retainer fastener for 3.0 x 3.0" duct		10
CL-3040	\$31.50	Wire retainer fastener for 3.0 x 4.0" duct		10
CL-4022	\$35.00	Wire retainer fastener for 4.0 x 2.25" duct		10
CL-4030	\$31.50	Wire retainer fastener for 4.0 x 3.0" duct		10
CL-4040	\$21.50	Wire retainer fastener for 4.0 x 4.0" duct		5
CL-6040	\$26.50	Wire retainer fastener for 6.0 x 4.0" duct		5



IBOCO® Wire Duct – Accessories

Duct Marking Tags			
Part Number	Price	Description	Qty
DM1	\$31.00	Single-width white cardboard identification label for wire duct. Supplied with black plastic mounting clip and transparent plastic cover slide	50

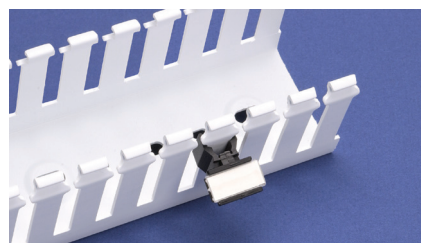
Note: **DM1** marking tags can only be used with T1 series wire duct.



Identification Tags

Allowing easy identification of control gear and switchgear, these tags are mounted by snapping the clip onto the sidewall finger segments of the duct. No gluing - no drilling! After installation, they need not be removed during maintenance or any work which involves the removal of the covers.

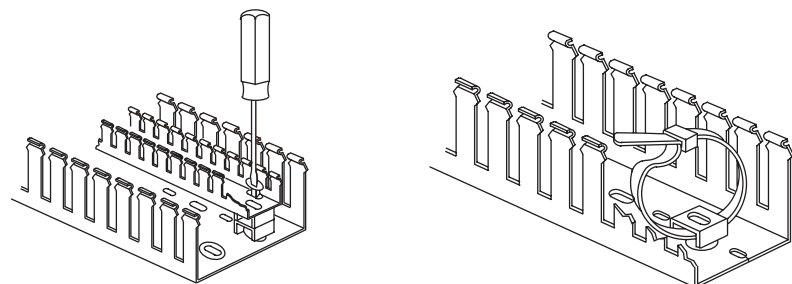
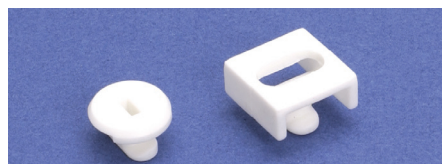
Note: Take care that clip is installed above the wires coming out to the sidewall slots.



Mounting Devices			
Part Number	Price	Description	Qty
ZP1	\$16.50	Round, white polyamide 'button' used to mount components and separators inside duct.	100
ZP2	\$20.00	Square white polyamide cable tie mount used to tighten a wire bundle inside duct.	50

Mounting Inserts

We carry mounts in two styles: ZP1 for mounting components and SEP-E separators inside duct, or for mounting small sizes of duct inside larger sizes (for separation of circuits with different functions); and ZP2, which is used with a cable tie to secure a wire bundle inside the duct.

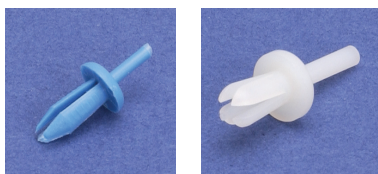
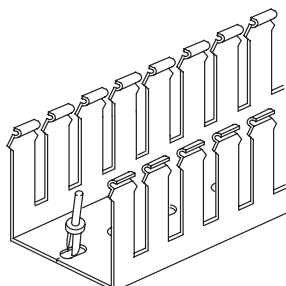


Wire Duct Rivets and Rivet Tools			
Part Number	Price	Description	Qty
R4*	\$19.00	Blue polyamide rivet used to install all types of wire duct with standard 4.5 mm [0.17 in] mounting holes.	250
B4	\$50.00	Red polyamide rivet tool used to install R4 rivets.	1
R6*	\$22.00	Natural polyamide rivet used to install all types of wire duct with standard 6.5 mm [0.26 in] mounting holes.	250
B6	\$50.00	Yellow polyamide rivet tool used to install R6 rivets.	1

* R4 drill hole size - 5/32" (4mm), R6 drill hole size - 7/32" [5.5 mm]
When using with Flexible wire duct, only the R4 rivet will currently work.

Rivets and Rivet Tools

Wire duct rivets install quickly and easily with the companion rivet tool, offering good temperature resistance and excellent mechanical properties. They can be used to install all types of wire duct with standard mounting holes.





IBOCO® Wire Duct – Material Specifications

Material Specifications								
Materials	Test Standard	Unit of Measure	Rigid PVC	Polypropylene	PVC Molded Components	Polyamide 6	Polyethylene	Flame Retardant Polyethylene
Technical Characteristics								
Chemical/Physical Properties								
Specific Gravity	ASTM D792	g/cm ³	1.55	1.01	1.32	1.14	0.92	0.97
H ₂ O 73.4°F Absorption	ISO 62	%	< 0.1	0.02	< 0.1	2.5	< 0.1	< 0.1
Formaldehyde	–	ppm	absent	absent	absent	absent	absent	absent
Cadmium	–	ppm	absent	absent	absent	absent	absent	absent
Mechanical Properties								
Tensile Stress at Break	ASTM D638	MPa	39	28	30	45	17	15
Traction Strength	ASTM D638	MPa	44	27	27	55	9.5	9
Elongation at Break	ASTM D638	%	130	200	97	250	400	600
Modulus of Elasticity at Traction	ASTM D638	MPa	4400	n/a	–	950	–	240
Modulus of Elasticity at Flexion	ASTM D790	MPa	3200	2100	–	1100	210	130
Thermal Properties								
Temperature VICAT	ASTM D1525	°C	84	95	70	198	89	–
HDT	ASTM D648	°C	72	60	60	185	–	–
Coefficient of Expansion	ASTM D696	K ⁻¹	6x10 ⁻⁵	10 ⁻⁵	8x10 ⁻⁵	8-10x10 ⁻⁵	22x10 ⁻⁵	10 ⁻⁵
Specific Heat	ASTM C351	kJ/kgK	0.94	n/a	1.24	1.7	–	–
Thermal Conductivity	ASTM C177	W/mK	0.14	0.21	0.14	0.29	0.32	0.32
Electrical Properties								
Dielectric Constant	ASTM D150	–	3.2 - 4.0	2.5	3.2	5.0	2.4	2.3
Dielectric Strength	IEC 243	kV/mm	70	25	60	35	90	90
Surface Resistance	IEC 93	Ω	10 ¹³	10 ¹³	10 ¹³	5x10 ¹¹	10 ¹³	10 ¹³
Self-Extinguishing								
Self-Extinguishing UL 94 1.6 mm	UL 94	–	V-0	V-0	V-0	V-2	HB	V-2
Self-Extinguishing UL 94 3.2 mm	UL 94	–	V-0	V-0	V-0	V-2	HB	V-2
Hot Wire Test (2 mm)	IEC 695-2-1	°C	960	960	960	650	650	850
Oxygen Number	ASTM D2863	%	43	30	34	25	–	25

Achieve™ Wire Duct - Slotted

Rigid PVC - Open Slot - Narrow Finger Wall WDN Series

Overview

Rugged wire duct is made of a rigid PVC that carries a UL 94 V-0 flammability rating for your wire containment needs. All WDN series wire duct comes in lengths of 6.56 ft [2m], complete with cover.

Features

- Additional holes on the sidewalls to be used with cable tie
- Flame-retardant PVC material, self-extinguishing according to UL 94 V-0
- Upper and lower score lines for breaking off individual fingers
- Open slot narrow finger form factor
- Cover included
- Standard length: 6.56 ft [2m]
- Color option: RAL 7030 Stone Gray
- Complies with RoHS regulations
- Complies with EN 50085-2-3 standards and UL 1565 and C22.2 No.18.5-02 standards
- Operating temperature range -5 to 50°C [23 to 122°F]



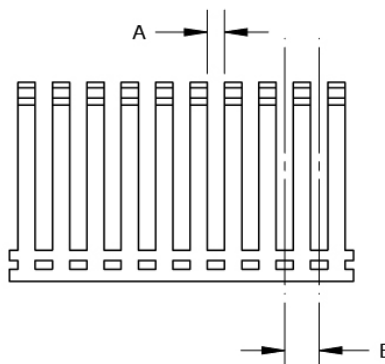
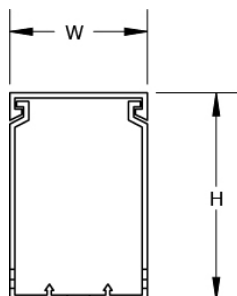
WDN-1530G-1



Gray Rigid PVC - Open Slot - Narrow Finger Wall - WDN Series						
Part Number	Qty	Price	Actual Size [W x H] inches [mm]	Dimension A inches [mm]	Dimension B inches [mm]	Drawing Link
WDN-1015G-1	1	\$12.00	1.00 x 1.57 [25 x 40]	0.16 [4]	0.24 [6]	PDF
WDN-1022G-1	1	\$12.00	1.00 x 2.36 [25 x 60]			PDF
WDN-1030G-1	1	\$15.00	1.00 x 3.15 [25 x 80]			PDF
WDN-1515G-1	1	\$13.00	1.57 x 1.57 [40 x 40]			PDF
WDN-1522G-1	1	\$14.00	1.57 x 2.36 [40 x 60]			PDF
WDN-1530G-1	1	\$17.00	1.57 x 3.15 [40 x 80]			PDF
WDN-1540G-1	1	\$20.00	1.57 x 3.94 [40 x 100]			PDF
WDN-2215G-1	1	\$14.00	2.36 x 1.57 [60 x 40]			PDF
WDN-2222G-1	1	\$14.00	2.36 x 2.36 [60 x 60]			PDF
WDN-2230G-1	1	\$18.00	2.36 x 3.15 [60 x 80]			PDF
WDN-2240G-1	1	\$20.00	2.36 x 3.94 [60 x 100]			PDF
WDN-3015G-1	1	\$18.00	3.15 x 1.57 [80 x 40]			PDF
WDN-3022G-1	1	\$19.00	3.15 x 2.36 [80 x 60]			PDF
WDN-3030G-1	1	\$22.00	3.15 x 3.15 [80 x 80]			PDF
WDN-3040G-1	1	\$24.00	3.15 x 3.94 [80 x 100]			PDF
WDN-4022G-1	1	\$21.00	3.94 x 2.36 [100 x 60]			PDF
WDN-4030G-1	1	\$24.00	3.94 x 3.15 [100 x 80]			PDF
WDN-4040G-1	1	\$29.00	3.94 x 3.94 [100 x 100]			PDF

Cover included.

Dimensions



Achieve™ Wire Duct - Slotted

Wire Fill Capacity

Rigid PVC - Open Slot - Narrow Finger Wall - WDN Series																			
Application	Electrical															Communication			
Conductor Size	8 AWG	10 AWG	12 AWG			14 AWG			16 AWG			18 AWG			22 AWG	23 AWG	23/24 AWG	24 AWG	Fiber Cable
Wire/Cable	0.22"	0.16"	0.13"	0.14"	0.15"	0.11"	0.12"	0.13"	0.10"	0.11"	0.12"	0.08"	0.10"	0.11"	0.08"	0.33"	0.25"	0.19"	0.12"
Insulation Type	THHN	THHN	THHN	MTW	MTW	THHN	MTW	MTW	TFFN	MTW	MTW	TFFN	MTW	MTW	MTW	Cat. 6A	Cat. 6	Cat. 5E	3.0 mm
Duct Size Inches [mm]	Recommended Maximum Number of Wires/Cables per Wire Duct (based on 50% fill capacity)																		
WDN-1015G-1 1.00 x 1.57 [25x40]	18	31	50	43	37	69	55	48	93	69	61	121	85	76	118	7	13	23	61
WDN-1022G-1 1.00 x 2.36 [25x60]	27	47	76	65	56	104	83	72	140	104	92	182	128	114	178	11	20	35	92
WDN-1030G-1 1.00 x 3.15 [25x80]	36	63	101	86	74	139	111	96	186	139	123	242	171	152	237	15	27	47	122
WDN-1515G-1 1.57 x 1.57 [40x40]	27	47	76	64	55	104	83	72	139	104	92	182	128	114	177	11	20	35	92
WDN-1522G-1 1.57 x 2.36 [40x60]	41	71	114	97	83	156	125	108	209	156	138	272	192	171	267	17	30	53	137
WDN-1530G-1 1.57 x 3.15 [40x80]	55	95	152	129	111	208	167	145	279	208	184	364	257	228	355	23	41	71	184
WDN-1540G-1 1.57 x 3.94 [40x100]	73	127	202	172	148	278	222	193	372	278	246	485	342	305	474	31	54	94	245
WDN-2215G-1 2.36 x 1.57 [60x40]	41	71	114	97	83	156	125	108	209	156	138	272	192	171	267	17	30	53	137
WDN-2222G-1 2.36 x 2.36 [60x60]	62	107	170	145	125	235	187	163	314	235	208	409	289	257	400	26	46	79	207
WDN-2230G-1 2.36 x 3.15 [60x80]	82	143	227	194	167	313	250	217	419	313	277	546	385	343	533	35	61	106	276
WDN-2240G-1 2.36 x 3.94 [60x10]	108	189	303	258	222	417	333	288	558	417	369	726	513	456	711	45	81	141	366
WDN-3015G-1 3.15 x 1.57 [80x40]	55	95	152	129	111	208	167	145	279	208	184	364	257	228	355	23	41	71	184
WDN-3022G-1 3.15 x 2.36 [80x60]	82	143	227	194	167	313	250	217	419	313	277	546	385	343	533	35	61	106	276
WDN-3030G-1 3.15 x 3.15 [80x80]	108	189	303	258	222	417	333	288	558	417	369	726	513	456	711	45	81	141	366
WDN-3040G-1 3.15 x 3.94 [80x100]	144	252	404	344	296	556	444	384	744	556	492	968	684	608	948	60	108	188	488
WDN-4022G-1 3.94 x 2.36 [100x60]	108	189	303	258	222	417	333	288	558	417	369	726	513	456	711	45	81	141	366
WDN-4030G-1 3.94 x 3.15 [100x80]	144	252	404	344	296	556	444	384	744	556	492	968	684	608	948	60	108	188	488
WDN-4040G-1 3.94 x 3.94 [100x100]	192	336	539	459	395	741	592	512	992	741	656	1291	912	811	1264	80	144	251	651

Cover included.

Achieve™ Wire Duct - Slotted

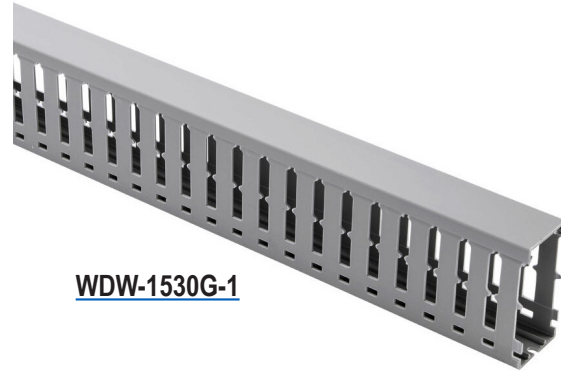
Rigid PVC - Open Slot - Wide Finger Wall WDW Series

Overview

Rugged wire duct made of rigid PVC that carries a UL 94 V0 flammability rating for your wire containment needs. All WDW series wire duct comes in lengths of 6.56 ft [2m], complete with cover.

Features

- Additional holes on the side walls to be used with cable tie
- Flame-retardant PVC material, self-extinguishing according to UL 94 V0
- Upper and lower score lines for breaking off individual fingers
- Open slot wide finger form factor
- Cover included
- Standard length: 2m [6.56 ft]
- Color option: RAL 7030 Stone Gray
- Complies with RoHS regulations
- Complies with EN 50085-2-3 standards and UL 1565-C22.2No.18.5-02 standards
- Operating temperature range -5 to 50°C [23 to 122°F]



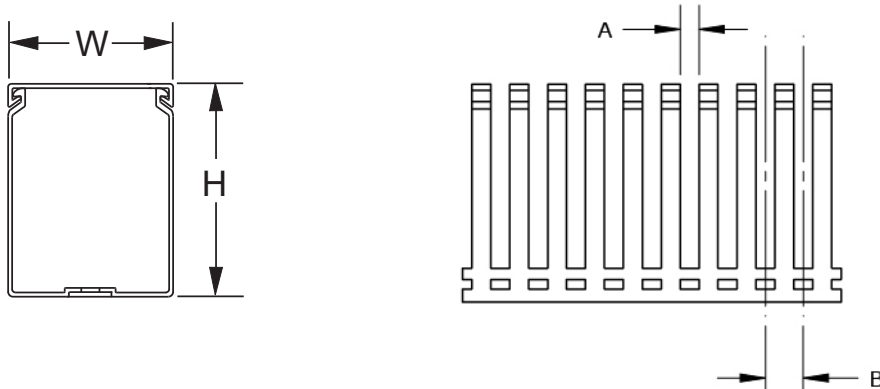
WDW-1530G-1



Gray Rigid PVC - Open Slot - Wide Finger Wall - WDW Series						
Part Number	Qty	Price	Actual Size [W x H] inches [mm]	Dimension A inches [mm]	Dimension B inches [mm]	Drawing Link
WDW-1522G-1	1	\$15.00	1.57 x 2.36 [40 x 60]	0.315 [8.0]	0.787 [20.0]	PDF
WDW-1530G-1	1	\$18.00	1.57 x 3.15 [40 x 80]			PDF
WDW-1540G-1	1	\$21.00	1.57 x 3.94 [40 x 100]			PDF
WDW-2222G-1	1	\$15.00	2.36 x 2.36 [60 x 60]			PDF
WDW-2230G-1	1	\$19.00	2.36 x 3.15 [60 x 80]			PDF
WDW-2240G-1	1	\$21.00	2.36 x 3.94 [60 x 100]			PDF
WDW-3022G-1	1	\$20.00	3.15 x 2.36 [80 x 60]			PDF
WDW-3030G-1	1	\$23.00	3.15 x 3.15 [80 x 80]			PDF
WDW-3040G-1	1	\$26.00	3.15 x 3.94 [80 x 100]			PDF
WDW-4030G-1	1	\$26.00	3.94 x 3.15 [100 x 80]			PDF
WDW-4040G-1	1	\$31.00	3.94 x 3.94 [100 x 100]			PDF
WDW-6040G-1	1	\$42.00	5.91 x 3.94 [150 x 100]			PDF

Cover included.

Dimensions





Wire Duct - Slotted

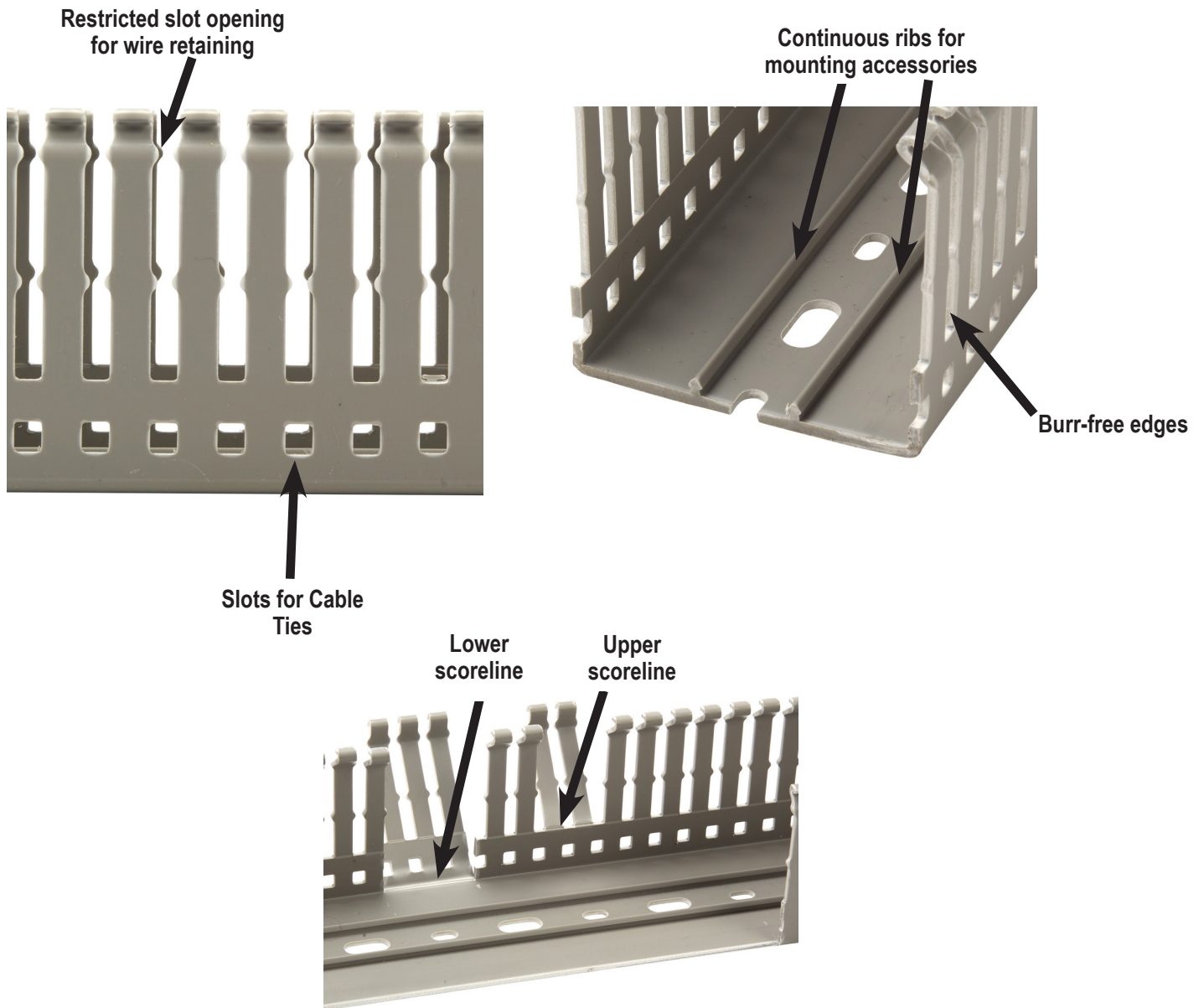
Wire Fill Capacity

Rigid PVC - Open Slot - Wide Finger Wall - WDW Series																			
Application	Electrical															Communication			
Conductor Size	8 AWG	10 AWG	12 AWG			14 AWG			16 AWG			18 AWG			22 AWG	23 AWG	23/24 AWG	24 AWG	Fiber Cable
Wire/Cable	0.22"	0.16"	0.13"	0.14"	0.15"	0.11"	0.12"	0.13"	0.10"	0.11"	0.12"	0.08"	0.10"	0.11"	0.08"	0.33"	0.25"	0.19"	0.12"
Insulation Type	THHN	THHN	THHN	MTW	MTW	THHN	MTW	MTW	TFFN	MTW	MTW	TFFN	MTW	MTW	MTW	Cat. 6A	Cat. 6	Cat. 5E	3.0 mm
Duct Size Inches [mm]	Recommended Maximum Number of Wires/Cables per Wire Duct (based on 50% fill capacity)																		
WDW-1522G-1 1.57 x 2.36 [40x60]	41	71	114	97	83	156	125	108	209	156	138	272	192	171	267	17	30	53	137
WDW-1530G-1 1.57 x 3.15 [40x80]	55	95	152	129	111	208	167	145	279	208	184	364	257	228	355	23	41	71	184
WDW-1540G-1 1.57 x 3.94 [40x100]	73	127	202	172	148	278	222	193	372	278	246	485	342	305	474	31	54	94	245
WDW-2222G-1 2.36 x 2.36 [60x60]	62	107	170	145	125	235	187	163	314	235	208	409	289	257	400	26	46	79	207
WDW-2230G-1 2.36 x 3.15 [60x80]	82	143	227	194	167	313	250	217	419	313	277	546	385	343	533	35	61	106	276
WDW-2240G-1 2.36 x 3.94 [60x100]	108	189	303	258	222	417	333	288	558	417	369	726	513	456	711	45	81	141	366
WDW-3022G-1 3.15 x 2.36 [80x60]	82	143	227	194	167	313	250	217	419	313	277	546	385	343	533	35	61	106	276
WDW-3030G-1 3.15 x 3.15 [80x80]	108	189	303	258	222	417	333	288	558	417	369	726	513	456	711	45	81	141	366
WDW-3040G-1 3.15 x 3.94 [80x100]	144	252	404	344	296	556	444	384	744	556	492	968	684	608	948	60	108	188	488
WDN-4030G-1 3.94 x 3.15 [100x80]	144	252	404	344	296	556	444	384	744	556	492	968	684	608	948	60	108	188	488
WDW-4040G-1 3.94 x 3.94 [100x100]	192	336	539	459	395	741	592	512	992	741	656	1291	912	811	1264	80	144	251	651
WDW-6040G-1 5.91 x 3.94 [150x100]	288	504	808	688	592	1112	888	768	1488	1112	984	1936	1368	1216	1896	120	216	376	976

Cover included.

Achieve™ Wire Duct - Slotted

Rigid PVC - Open Slot - Narrow Finger Wall WDN Series and Wide Finger Wall WDW Series



AchieVe™ Wire Duct - Accessories

Cable Tie Attachment

Overview

The AchieVe cable tie attachment is for use along with a cable tie to group wires together inside the wire duct. The **WD-CTCLAMP** snaps onto either of the continuous ribs and can be easily repositioned once installed.

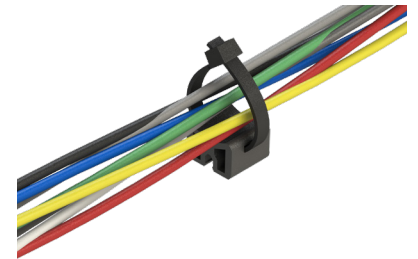


Features

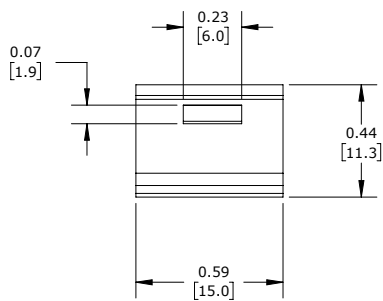
- Material: Polyamid (PA), flammability rating of UL94 V-2
- Operating Temperature Range: -55 to 120°C [-67 to 248°F]
- CE



Cable Tie Attachment					
Part Number	Price	Description	Color	Qty	Drawing Link
WD-CTCLAMP	\$9.00	AchieVe cable tie attachment for use with AchieVe wire duct 1.5" width or larger.	Black	50	PDF



Dimensions inches [mm]



Wire Retainers

Overview

For holding wires during wiring operations, these retainers are essential. They allow easy access to the interior of the wire duct during maintenance or alterations, or for isolating specific wires/cables, while assuring that wiring bundles will not fall out when the duct cover is removed. Installed by snapping into the two continuous ribs on the inside bottom face of the wire duct.

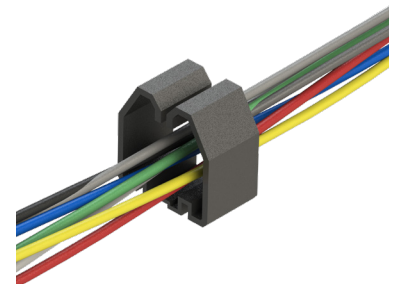


Features

- Material: Polyamid (PA), flammability rating of UL94 V-2
- Operating Temperature Range: -40 to 120°C [-40 to 248°F]
- CE



Wire Retainers					
Part Number	Price	Description	Color	Qty	Drawing Link
WD-RET-1515	\$8.00	AchieVe wire retainer for use with AchieVe wire duct 1.5 x 1.5 in or larger.	Black	10	PDF
WD-RET-1522	\$9.00	AchieVe wire retainer for use with AchieVe wire duct 1.5 x 2.25 in or larger.	Black	10	PDF
WD-RET-2230	\$12.00	AchieVe wire retainer for use with AchieVe wire duct 2.25 x 3.0 in or larger.	Black	10	PDF



AchieVe™ Wire Duct - Accessories

Wire Separator

Overview

The AchieVe wire separator easily clips onto wire duct fingers and is used to separate wires within the duct. Score lines to break off for compatibility with multiple wire duct widths adjustable for 1.5" or larger width duct.

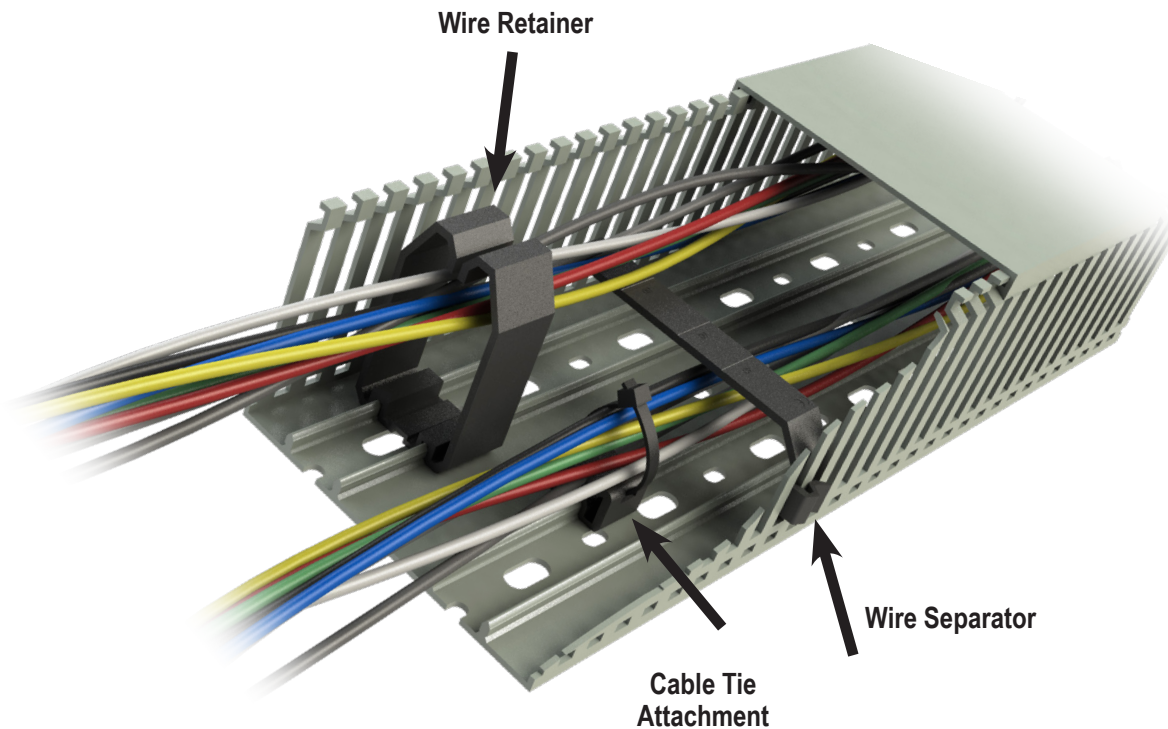


Features

- Material: Polyamid (PA), flammability rating of UL94 V-2
- Operating Temperature Range: -55 to 120°C [-67 to 248°F]
- CE



Wire Separator					
Part Number	Price	Description	Color	Qty	Drawing Link
WD-CHOLDER	\$4.00	AchieVe wire separator for use with AchieVe wire duct 1.5" width or larger.	Black	10	PDF



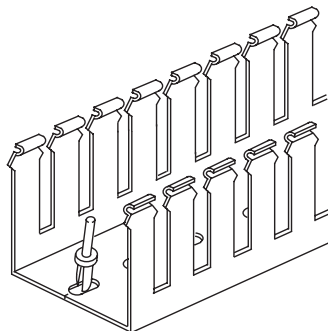
Wire Duct - Accessories

Rivets and Rivet Tools

Wire duct rivets install quickly and easily with the companion rivet tool, offering good temperature resistance and excellent mechanical properties. They can be used to install all types of wire duct with standard mounting holes.

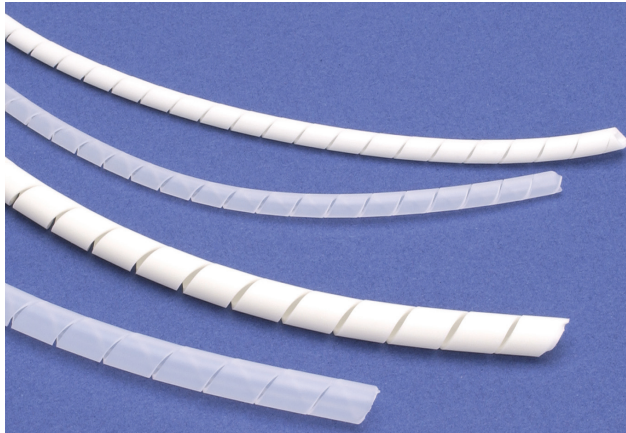
Wire Duct Rivets and Rivet Tools			
Part Number	Price	Description	Qty
R4*	\$19.00	Blue polyamide rivet used to install all types of wire duct with standard 4.5 mm [0.17 in] mounting holes.	250
B4	\$50.00	Red polyamide rivet tool used to install R4 rivets.	1
R6*	\$22.00	Natural polyamide rivet used to install all types of wire duct with standard 6.5 mm [0.26 in] mounting holes.	250
B6	\$50.00	Yellow polyamide rivet tool used to install R6 rivets.	1

* R4 drill hole size - 5/32" (4mm), R6 drill hole size - 7/32" [5.5 mm]

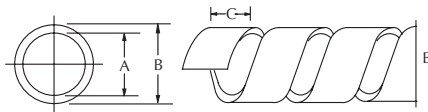




IBOCO® Spiral Wrap / Braided Sleeve



Dimensions



Part Number		Dimensions in Inches			Wire Bundle Size in Inches	Feet per Carton
Polyethylene	Flame-Retardant Polyethylene	A	B	C		
P-1	PA1	0.06	0.12	0.20	1/16 to 1/2	160
P-2	PA2	0.16	0.24	0.31	1/4 to 2	80
P-3	PA3	0.31	0.39	0.47	3/8 to 3	80
P-4	PA4	0.35	0.47	0.47	1/2 to 4	65

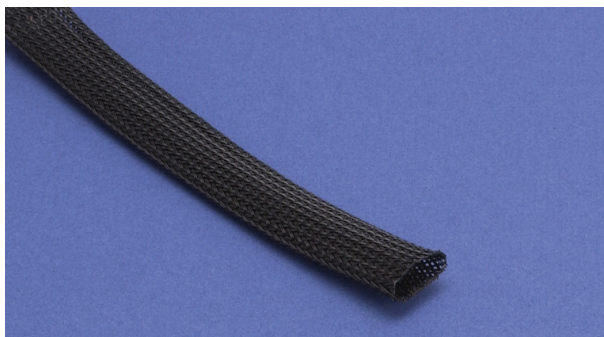
Spiral Wrap

For neatly grouping wire bundles simply and economically, spiral wrap has no equal. Strong, yet easy to install, it protects the wire bundle, keeping it flexible though tightly contained. It is easily removed and reusable for temporary wiring.

SPIRALITE Spiral Wrap Selection Chart				
Part Number	Price	Description	Color	Length
P-1	\$19.00	0.12" nominal o.d. Polyethylene spiral wrap used for wire bundles from 1/16 to 1/2 inch diameter.	Natural	160 ft./pack
PA1	\$26.50	0.12" nominal o.d. self-extinguishing Polyethylene spiral wrap used for wire bundles from 1/16 to 1/2 inch diameter.	White	160 ft./pack
P-2	\$20.00	0.25" nominal o.d. Polyethylene spiral wrap used for wire bundles from 1/4 to 2 inch diameter.	Natural	80 ft./pack
PA2	\$28.00	0.25" nominal o.d. self-extinguishing Polyethylene spiral wrap used for wire bundles from 1/4 to 2 inch diameter.	White	80 ft./pack
P-3	\$31.50	0.37" nominal o.d. Polyethylene spiral wrap used for wire bundles from 3/8 to 3 inch diameter.	Natural	80 ft./pack
PA3	\$50.00	0.37" nominal o.d. self-extinguishing Polyethylene spiral wrap used for wire bundles from 3/8 to 3 inch diameter.	White	80 ft./pack
P-4	\$43.00	0.5" nominal o.d. Polyethylene spiral wrap used for wire bundles from 1/2 to 4 inch diameter.	Natural	65 ft./pack
PA4	\$61.00	0.5" nominal o.d. self-extinguishing Polyethylene spiral wrap used for wire bundles from 1/2 to 4 inch diameter.	White	65 ft./pack

Braided Sleeve

This lightweight, expandable, self-extinguishing polyester sleeving has an open weave to allow maximum diameter expansion. It is super-flexible and easy to install, gripping objects of various shapes and sizes reliably. Abrasion-resistant, it provides extra protection against chemicals and flames.



Braided Sleeve Material Specifications	
Operating Temp	-50 to +150°C [-58 to +302°F]
Physical Properties	Self-extinguishing for UL 94V-2
Maximum Elongation	42%
Diameter Expansion	100%
Other	Halogen-free

Braided Sleeve Selection Chart				
Part Number	Price	Description	Color	Length
TY-5	\$128.00	Braided expandable polyester sleeving, 0.19 in [5mm] nominal i.d., 0.15 in [4mm] to 0.47 in [12mm] nominal range	Black	325 ft./pack
TY-10	\$237.00	Braided expandable polyester sleeving, 0.37 in [10mm] nominal i.d., 0.31 in [8mm] to 0.86 in [22mm] nominal range	Black	325 ft./pack
TY-20	\$204.00	Braided expandable polyester sleeving, 0.75 in [20mm] nominal i.d., 0.63 in [16mm] to 1.37 in [35mm] nominal range	Black	164 ft./pack
TY-30	\$292.00	Braided expandable polyester sleeving, 1.12 in [30mm] nominal i.d., 0.98 in [25mm] to 1.89 in [48mm] nominal range	Black	164 ft./pack
TY-50	\$422.00	Braided expandable polyester sleeving, 2.0 in [50mm] nominal i.d., 1.57 in [40mm] to 2.82 in [72mm] nominal range	Black	164 ft./pack



Non-Metallic Two-Piece Split Conduit EWT-PA Series

Overview

The EWT-PA series non-metallic two-piece split conduits consist of two separate corrugated tubes, one inside the other, which allows the conduit to be opened and reassembled at any time. This conduit is perfect for working with terminated cabling, wires and retrofitting applications where pulling cable and tubing through conduit is impossible to do. The dual overlapping conduits increase mechanical protection and eliminate unintentional exposure of the cabling bundle inside.

Features

- Made of specially modified polyamide 6
- Facilitates mounting of pre-assembled cables
- Split version simplifies addition and removal of new cables/lines anytime
- Simplifies repairs to existing systems
- High crush resistance, per IEC EN 61386: >900N
- Halogen, phosphor and cadmium-free.
- Flammability: HB per UL94
- Operating temperature: -40 to 248°F [-40 to 120°C]


831000

Non-Metallic Two-Piece Split Conduit - EWT-PA Series Selection Chart

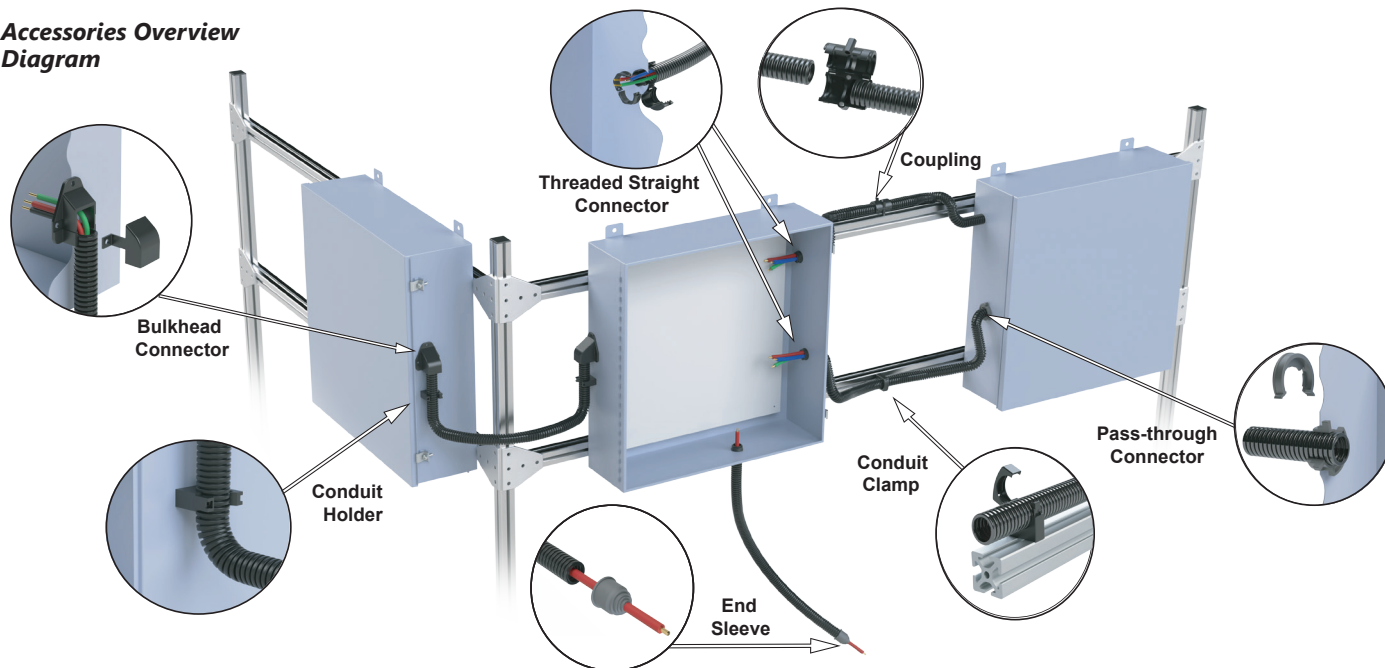
Part Number	Price	Quantity	Size	Coil Length m [ft]	Bend Radius mm [in]	Color	Material	Drawing Links
831000	\$57.00	1	M12/P09	10 [32.8]	75 [2.95]	Black	Modified polyamide 6	PDF
831002	\$127.00	1	M12/P09	25 [82]				PDF
831004	\$90.00	1	M16/P11	10 [32.8]	100 [3.94]			PDF
831006	\$209.00	1	M16/P11	25 [82]				PDF
831008	\$112.00	1	M20/P16	10 [32.8]	120 [4.72]			PDF
831010	\$263.00	1	M20/P16	25 [82]				PDF
832500	\$143.00	1	M25/P21	10 [32.8]	170 [6.69]			PDF
832502	\$340.00	1	M25/P21	25 [82]				PDF
832504	\$181.00	1	M32/P29	10 [32.8]	180 [7.09]			PDF
832506	\$435.00	1	M32/P29	25 [82]				PDF
832508	\$228.00	1	M40/P36	10 [32.8]	200 [7.87]			PDF
832510	\$553.00	1	M40/P36	25 [82]				PDF

Split Conduit Accessories Selection Chart

This chart provides an overview of the accessories available for use with the non-metallic two-piece split conduit.

Split Conduit Accessories Selection Chart									
Non-Metallic Two-Piece Split Conduit	Conduit Coupling	Threaded Straight Connector	Split Lock Nut	Bulkhead Connector	Pass-Through Connector	Conduit Holder	Conduit Clamp	End Sleeve	Wire Insertion Tool
EWT-PA M12/P09 831000 , 831002	-	-	-	-	AT M20/P09 836401	UH M12/P09 836121	UHE M12/P09 836501	ET M12/P09 836601	KE 837001
EWT-PA M16/P11 831004 , 831006	-	SVT M16x1.5/P11 836010	GMT M16x1.5 836101	KFW/D M16/P11 836301	AT M25/P11 836403	UH M16/P11 836123	UHE M16/P11 836503	ET M16/P11 836603	
		SVT M20x1.5/P11 836012	GMT M20x1.5 836103						
EWT-PA M20/P16 831008 , 831010	-	SVT M20x1.5/P16 836014	GMT M20x1.5 836103	KFW/D M20/P16 836303	AT M32/P16 836405	UH M20/P16 836125	UHE M20/P16 836505	ET M20/P16 836605	
		SVT M25x1.5/P16 836016	GMT M25x1.5 836105						
EWT-PA M25/P21 832500 , 832502	SVG M25/P21 837010	SVT M25x1.5/P21 836018	GMT M25x1.5 836105	KFW/D M25/P21 836305	AT M40/P21 836407	UH M25/P21 836127	UHE M25/P21 836507	ET M25/P21 836607	
		SVT M32x1.5/P21 836020	GMT M32x1.5 836107						
EWT-PA M32/P29 832504 , 832506	SVG M32/P29 837012	SVT M32x1.5/P29 836022	GMT M32x1.5 836107	KFW/D M32/P29 836307	AT M50/P29 836409	UH M32/P29 836129	UHE M32/P29 836509	ET M32/P29 836609	
		SVT M40x1.5/P29 836026	GMT M40x1.5 836109						
EWT-PA M40/P36 832508 , 832510	SVG M40/P36 837014	SVT M32x1.5/P36 836024	GMT M32x1.5 836107	KFD/W M40/P36 836309	AT M50/P36 836411	UH M40/P36 836131	UHE M40/P36 836511	ET M40/P36 836611	
		SVT M40x1.5/P36 836028	GMT M40x1.5 836109						

Accessories Overview Diagram



Flex Split Conduit



Couplings - SVG Series

Overview

The SVG series couplings are used to extend or repair an EWT-PA series conduit. The open latch design allows for easy assembly and superior conduit holding strength. Mounting holes are also included for securing the conduit in place.

Features

- Easy assembly by snapping over two conduit ends
- Split version simplifies addition and removal of cables
- Mounting holes allow securing coupling to equipment
- Halogen-free
- V0 self-extinguishing per UL94
- IP42, IP54 bolted
- Operating temperature: -40 to 230°F [-40 to 110°C]



837010

Couplings - SVG Series Selection Chart										
Part Number	Price	Quantity	Size	Works With EWT-PA Series Conduit Size	Hexagon Socket Head Cap Screw (ISO 4762)		Tightening Torque	Color	Material	Drawing Links
					Size	Length mm [in]				
837010	\$36.00	5	M25/P21	M25/P21	M5	45 [1.77]	0.4 N•m 3.54 lb•in	Black	Modified polyamide 6	PDF
837012	\$48.00	5	M32/P29	M32/P29		50 [1.97]				PDF
837014	\$61.00	5	M40/P36	M40/P36		60 [2.36]				PDF

Note: Mounting hardware not provided.

SVG Series Opening Diagram





Threaded Straight Connectors - SVT Series

Overview

The SVT series threaded straight connectors are ideally suited to attach and secure the end of an EWT-PA series split conduit to electrical equipment.

Agency Approval

- cURus, File E148958



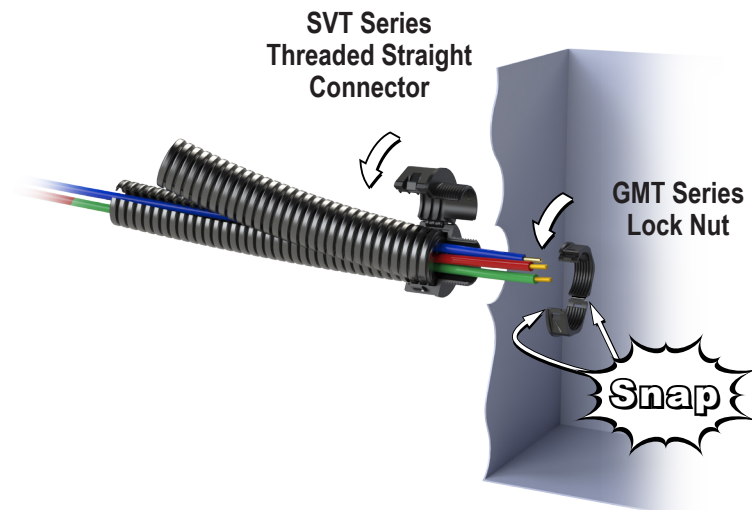
Features

- Simplifies installations and/or repairs
- Use with the GMT series split lock nut
- Compact design
- Easy assembly and disassembly
- Halogen-free
- Flammability: V0 self-extinguishing per UL94
- IP50
- Operating temperature: -40 to 230°F [-40 to 110°C]



836010

Threaded Straight Connectors - SVT Series Selection Chart										
Part Number	Price	Quantity	Size	Thread Size	Works With Split Lock Nut	Works With Conduit Size	Mounting Hole Cut-out mm [in]	Color	Material	Drawing Links
836010	\$35.00	5	M16x1.5/P11	M16x1.5	GMT M16x1.5 836101	M16/P11	17.5 [0.69]	Black	Modified polyamide 6	PDF
836012	\$35.00	5	M20x1.5/P11	M20x1.5	GMT M20x1.5 836103	M20/P16	22 [0.87]			PDF
836014	\$36.00	5	M20x1.5/P16				PDF			
836016	\$36.00	5	M25x1.5/P16	M25x1.5	GMT M25x1.5 836105	M25/P21	27 [1.06]			PDF
836018	\$42.00	5	M25x1.5/P21				PDF			
836020	\$42.00	5	M32x1.5/P21	M32x1.5	GMT M32x1.5 836107	M32/P29	35 [1.38]			PDF
836022	\$47.00	5	M32x1.5/P29							PDF
836024	\$61.00	5	M32x1.5/P36							PDF
836026	\$49.00	5	M40x1.5/P29	M40x1.5	GMT M40x1.5 836109	M32/P29	43 [1.69]			PDF
836028	\$64.00	5	M40x1.5/P36					PDF		



The SVT Series Threaded Straight Connector and the GMT Series Lock Nut are sold separately.



Split Lock Nuts - GMT Series

Overview

The GMT series split lock nut is used in conjunction with the SVT series threaded straight connector to attach and secure an EWT-PA series conduit to electrical equipment.

Features

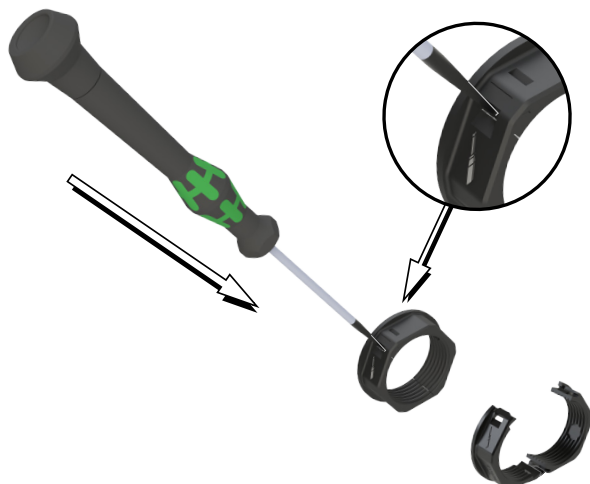
- Simplifies installation and/or repairs
- Use with the SVT series split connector
- Compact design
- Easy assembly and disassembly
- Halogen-free
- Flammability: V0 self-extinguishing per UL94
- Operating temperature: -30 to 212°F [-30 to 100°C]



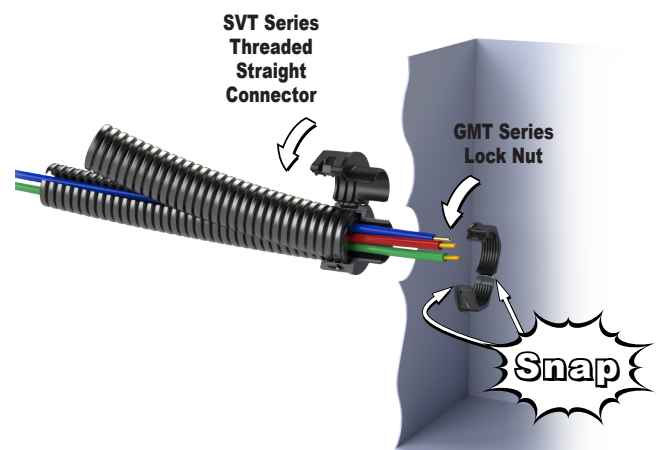
836101

Split Lock Nuts - GMT Series Selection Chart									
Part Number	Price	Quantity	Size	Thread Size	Works With Split Connector	Works with EWT-PA Series Conduit Size	Color	Material	Drawing Links
836101	\$22.00	5	M16x1.5	M16x1.5	SVT M16x1.5/P11 836010	M16/P11	Black	Modified polyamide 6	PDF
836103	\$23.00	5	M20x1.5	M20x1.5	SVT M20x1.5/P11 836012	M16/P11			PDF
					SVT M20x1.5/P16 836014	M20/P16			
836105	\$23.00	5	M25x1.5	M25x1.5	SVT M25x1.5/P16 836016	M20/P16			PDF
					SVT M25x1.5/P21 836018	M25/P21			
836107	\$24.00	5	M32x1.5	M32x1.5	SVT M32x1.5/P21 836020	M25/P21			PDF
					SVT M32x1.5/P29 836022	M32/P29			
					SVT M32x1.5/P36 836024	M40/P36			
836109	\$28.00	5	M40x1.5	M40x1.5	SVT M40x1.5/P29 836026	M32/P29			PDF
					SVT M40x1.5/P36 836028	M40/P36			

GMT Series Opening Diagram



GMT Series Installation Diagram



The SVT Series Threaded Straight Connector and the GMT Series Lock Nut are sold separately.



Bulkhead Connectors - KFW/D Series

Overview

The KFW/D series bulkhead connectors provide a 90-degree connection to equipment and machinery. With their removable upper piece and generous opening, these connectors are ideal for use when installing pre-assembled cables.

Features

- System divided in two to allow for quick and easy installation of cables
- Gasket included
- No extra fittings/parts are required
- Halogen-free
- Flammability: V0 self-extinguishing per UL94
- IP54
- Operating temperature: -40 to 230°F [-40 to 110°C]



836301

Agency Approval

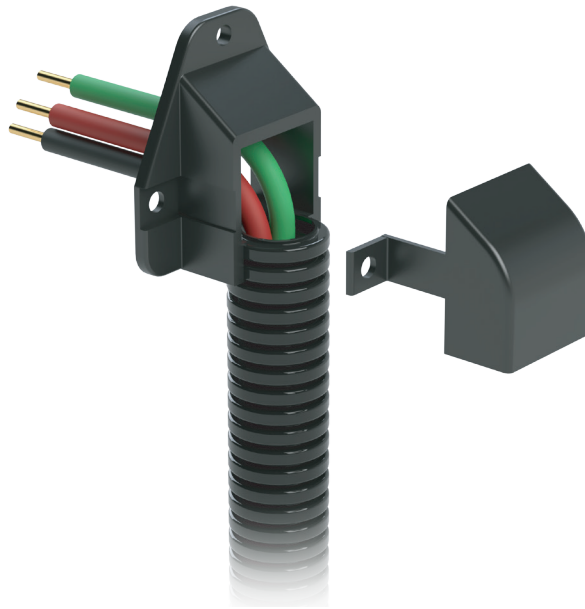
- cURus, File E148958



Bulkhead Connectors - KFW/D Series Selection Chart

Part Number	Price	Quantity	Size	Works With EWT-PA Series Conduit Size	Hexagon Socket Head Cap Screw ISO 4762		Tightening Torque	Mounting Hole Cut-out mm [in]	Color	Material	Drawing Links
					Size	Length mm [in]					
836301	\$23.00	2	M16/P11	M16/P11	M4	10 [0.39]	0.4 N•m 3.54 lb•in	22.5 x 27 [0.89 x 1.06]	Black	Connector: Modified polyamide 6 Gasket (included): Neoprene (CR)	PDF
836303	\$16.00	2	M20/P16	M20/P16	M4	10 [0.39]		22.5 x 27 [0.89 x 1.06]			PDF
836305	\$19.00	2	M25/P21	M25/P21	M6	12 [0.47]		30 x 42.5 [1.18 x 1.67]			PDF
836307	\$28.00	2	M32/P29	M32/P29	M6	14 [0.55]		40 x 68 [1.57 x 2.68]			PDF
836309	\$43.00	2	M40/P36	M40/P36	M6	18 [0.71]		48.8 x 74.5 [1.92 x 2.93]			PDF

Note: Mounting hardware not provided.





Pass-Through Connectors - AT Series

Overview

The AT series of pass-through connectors holds the EWT-PA series split conduit together and secures it to equipment and machinery.

Agency Approval

- cURus, File E148958



Features

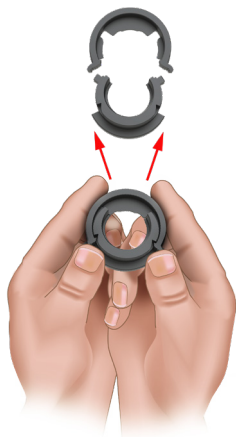
- Click system for quick, easy and tool-free assembly and disassembly
- Compact design
- Conduits can be rotated
- Pass-through openings are drilled in standard hole diameters
- Halogen-free
- Flammability: V0 self-extinguishing per UL94
- IP54
- Operating temperature: -40 to 230°F [-40 to 110°C]



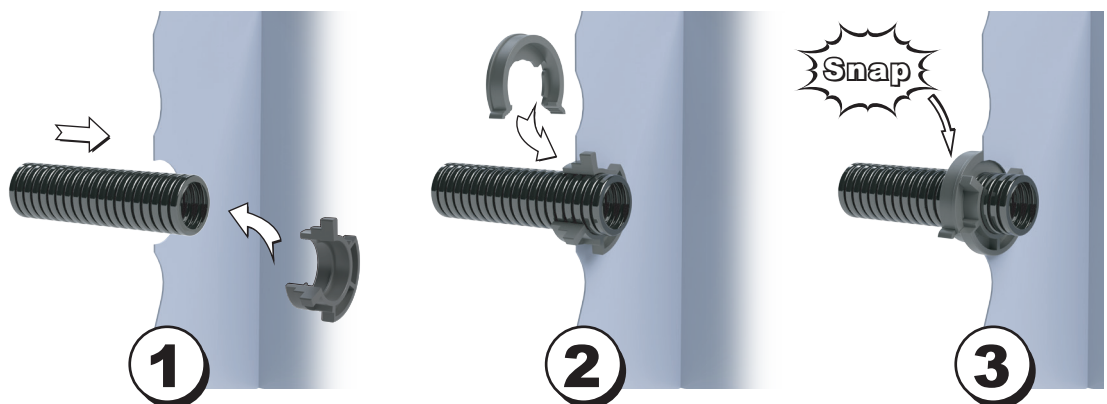
836401

Pass-Through Connectors - AT Series Selection Chart									
Part Number	Price	Quantity	Size	Works With EWT-PA Series Conduit Size	Mounting Wall Thickness mm [in]	Mounting Hole Cut-out mm [in]	Color	Material	Drawing Links
836401	\$14.00	5	M20/P09	M12/P09	1.0 - 1.5 [0.04 - 0.06]	20.50 [0.81]	Black	Modified polyamide 6	PDF
836403	\$21.00	5	M25/P11	M16/P11		25.50 [1.00]			PDF
836405	\$23.00	5	M32/P16	M20/P16		32.50 [1.28]			PDF
836407	\$41.00	5	M40/P21	M25/P21		40.50 [1.59]			PDF
836409	\$43.00	5	M50/P29	M32/P29		50.50 [1.99]			PDF
836411	\$44.00	5	M50/P36	M40/P36					PDF

AT Series Release Diagram



AT Series Installation Diagram





Conduit Holders - UH Series

Overview

The UH series conduit holder is used to attach and secure EWT-PA series conduit to equipment and machinery.

Agency Approval

- cURus, File E148958



Features

- EWT-PA series conduit is simply snapped into the holder allowing quick assembly
- Easy installation with a single-screw attachment
- Halogen-free
- Flammability: V0 self-extinguishing per UL94
- Operating temperature: -30 to 212°F [-30 to 100°C]



836121

Conduit Holders - UH Series Selection Chart										
Part Number	Price	Quantity	Size	Works With EWT-PA Series Conduit Size	Hexagon Socket Head Cap Screw (ISO 4762)		Tightening Torque	Color	Material	Drawing Link
					Size	Length mm [in]				
836121	\$10.00	5	M12/P09	M12/P09	M5	10 [0.39]	0.8 N•m 7.08 lb•in	Black	Modified polyamide 6	PDF
836123	\$10.00	5	M16/P11	M16/P11						PDF
836125	\$10.00	5	M20/P16	M20/P16						PDF
836127	\$11.00	5	M25/P21	M25/P21	M6	12 [0.47]	1.8 N•m 15.93 lb•in			PDF
836129	\$22.00	5	M32/P29	M32/P29						PDF
836131	\$16.00	5	M40/P36	M40/P36						PDF

Note: Mounting hardware not provided.





Conduit Clamps - UHE Series

Overview

The UHE series conduit clamp is used to attach and secure EWT-PA series conduit to equipment and machinery.

Agency Approval

- cURus, File E148958



Features

- EWT-PA series conduit is simply snapped into the holder allowing quick assembly
- Easy installation with a single-screw attachment
- Securing the conduit on all sides makes the conduit clamp excellent for overhead installations
- Highest degree of holding power
- Halogen-free
- Flammability: V0 self-extinguishing per UL94
- Operating temperature: -40 to 230°F [-40 to 110°]



836501

Conduit Clamps - UHE Series Selection Chart										
Part Number	Price	Quantity	Size	Works With EWT-PA Series Conduit Size	Hexagon Socket Head Cap Screw (ISO 4762)		Tightening Torque	Color	Material	Drawing Links
					Size	Length mm [in]				
836501	\$10.00	5	M12/P09	M12/P09	M5	10 [0.39]	1N•m 8.85 lb•in	Black	Modified polyamide 6	PDF
836503	\$10.00	5	M16/P11	M16/P11						PDF
836505	\$15.00	5	M20/P16	M20/P16	M6	12 [0.47]	2N•m 17.7 lb•in			PDF
836507	\$12.00	5	M25/P21	M25/P21						PDF
836509	\$14.00	5	M32/P29	M32/P29						PDF
836511	\$15.00	5	M40/P36	M40/P36						PDF

Note: Mounting hardware not provided.

UHE Series Opening Diagram



Shown on Sureframe T-slotted rail, sold separately.

End Sleeves - ET Series

Overview

The ET series end sleeve is used to close off the open end of a conduit or as a centering device for exiting cables/lines.

Features

- End sleeve opening can be cut to fit different cable diameters
- Easy assembly, just push into the end of the conduit for a tight fit
- Halogen-free
- Flammability: HB per UL94
- IP67
- Operating temperature: -40 to 212°F [-40 to 100°C]



836601

End Sleeves - ET Series Selection Chart

Part Number	Price	Quantity	Size	Works With EWT-PA Series Conduit Size	Color	Material	Drawing Links
836601	\$22.00	5	M12/P09	M12/P09	Black	Thermoplastic elastomer (TPE)	PDF
836603	\$32.00	5	M16/P11	M16/P11			PDF
836605	\$29.00	5	M20/P16	M20/P16			PDF
836607	\$36.00	5	M25/P21	M25/P21			PDF
836609	\$45.00	5	M32/P29	M32/P29			PDF
836611	\$52.00	5	M40/P36	M40/P36			PDF

Wire Insertion Tool - KE Series

Overview

The KE series wire insertion tool facilitates the insertion of cables into split cable conduits.

Features

- Quick insertion of cables
- No unnecessary deformation of the conduit
- Halogen-free
- Flammability: HB per UL94
- IP67
- Operating temperature: -40 to 212°F [-40 to 100°C]



837001

Wire Insertion Tool - KE Series

Part Number	Price	Quantity	Max. Ø Cable mm [in]	Works With EWT-PA Series Conduit Size	Color	Material	Drawing Links
837001	\$24.00	1	22 [0.87]	All	Red	Modified polyamid 6	NA

Electrical Conduit Kits - FHS Series



Overview

The FHS series kits are specifically designed for cable routing on cobots and small robots. The robot kit UNI offers the possibility of professional cable routing on almost all models.

Features

- Low interference contour
- Tool-free installation
- Secure hold, even on conical surfaces
- Quick routing adjustment is possible during implementation
- 2,000,000 cycles @ 4.72 in bend radius [IEC 61386]
- Solid tubing is rated for 270lbs crush resistance [IEC 61386]



573525



573526

Electrical Conduit Kits - FHS Series			
Part Number	Price	Description	Drawing Link
573525	\$374.00	Murrplastik FHS-C-SET- UNI electrical conduit kit, solid, includes 13ft of 1in diameter closed corrugated conduit, (5) hook & loop mounts, (20) hook & loop straps, (2) end grommets.	PDF
573526	\$413.00	Murrplastik FHS-C-SET- UNI LS electrical conduit kit, split, includes 13ft of 1in diameter split corrugated conduit, (5) hook & loop mounts, (20) hook & loop straps, (2) end grommets, (1) wire insertion tool.	PDF



**FHS installation onto robot,
kit contents listed in table above**

DIN Rail Mount EMC Shield Cable Clips SCF-EMV / MSCF-EMV Series



Overview

The SCF-EMV / MSCF-EMV series EMC shield cable clips easily snap on to 35mm DIN rail. The spring action provides uninterrupted contact pressure with the shield enabling a conductive path to discharge EMI (electromagnetic interference).

Features

- The spring action provides uninterrupted contact pressure with the shield
- Excellent discharge of high-frequency noise current
- Easy installation (no tools required)
- Zinc plated spring steel
- 35mm DIN rail mount

DIN Rail Mount EMC Shield Cable Clips SCF-EMV / MSCF-EMV Series				
Part Number	Price	Description	Shield Diameter	Drawing Link
571052	\$25.00	Murrplastik SCF-EMV series EMC shield cable clip, accepts 0.06-0.12in diameter cable, 35mm DIN rail mount, zinc plated spring steel. Package of 5.	0.06–0.12in	PDF
571054	\$26.00	Murrplastik SCF-EMV series EMC shield cable clip, accepts 0.12-0.24in diameter cable, 35mm DIN rail mount, zinc plated spring steel. Package of 5.	0.12–0.24in	PDF
571056	\$26.00	Murrplastik SCF-EMV series EMC shield cable clip, accepts 0.24-0.31in diameter cable, 35mm DIN rail mount, zinc plated spring steel. Package of 5.	0.24–0.31in	PDF
571058	\$26.00	Murrplastik SCF-EMV series EMC shield cable clip, accepts 0.31-0.43in diameter cable, 35mm DIN rail mount, zinc plated spring steel. Package of 5.	0.31–0.43in	PDF
571060	\$30.00	Murrplastik SCF-EMV series EMC shield cable clip, accepts 0.43-0.63in diameter cable, 35mm DIN rail mount, zinc plated spring steel. Package of 5.	0.43–0.63in	PDF
571064	\$32.00	Murrplastik SCF-EMV series EMC shield cable clip, accepts 0.67-1.18in diameter cable, 35mm DIN rail mount, zinc plated spring steel. Package of 5.	0.67–1.18in	PDF
571066	\$35.00	Murrplastik SCF-EMV series EMC shield cable clip, accepts 1.18-1.46in diameter cable, 35mm DIN rail mount, zinc plated spring steel. Package of 5.	1.18–1.46in	PDF
571070	\$32.00	Murrplastik MSCF-EMV series EMC shield cable clip, accepts 0.12-0.47in diameter cable, 35mm DIN rail mount, zinc plated spring steel. Package of 5.	0.12–0.47in	PDF
571072	\$37.00	Murrplastik MSCF-EMV series EMC shield cable clip, accepts 0.28-0.71in diameter cable, 35mm DIN rail mount, zinc plated spring steel. Package of 5.	0.28–0.71in	PDF



571060



571070



**SCF-EMV / MSCF-EMV installation
shown with shielded cable**

DIN Rail Mount EMC Shield Cable Clips With Strain Relief SCZF-EMV / MSCFZ-EMV Series



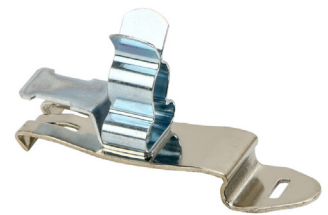
Overview

The SCZF-EMV / MSCFZ-EMV series EMC shield cable clips with strain relief easily snap on to 35mm DIN rail. The spring action provides uninterrupted contact pressure with the shield enabling a conductive path to discharge EMI (electromagnetic interference). The strain relief tab protects the cable when using with any standard cable tie.

Features

- The spring action provides uninterrupted contact pressure with the shield.
- Excellent discharge of high-frequency noise current
- High stability
- Easy installation (no tools required)
- Zinc plated spring steel
- 35mm DIN rail mount

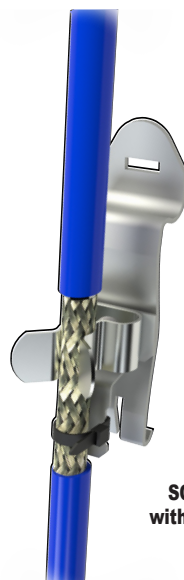
DIN Rail Mount EMC Shield Cable Clips With Strain Relief SCZF-EMV / MSCFZ-EMV Series				
Part Number	Price	Description	Shield Diameter	Drawing Link
571074	\$29.00	Murrplastik SCZF-EMV series EMC shield cable clip, accepts 0.06-0.12in diameter cable, 35mm DIN rail mount, with strain relief, zinc plated spring steel. Package of 5.	0.06–0.12in	PDF
571075	\$30.00	Murrplastik SCZF-EMV series EMC shield cable clip, accepts 0.12-0.24in diameter cable, 35mm DIN rail mount, with strain relief, zinc plated spring steel. Package of 5.	0.12–0.24in	PDF
571076	\$30.00	Murrplastik SCZF-EMV series EMC shield cable clip, accepts 0.24-0.31in diameter cable, 35mm DIN rail mount, with strain relief, zinc plated spring steel. Package of 5.	0.24–0.31in	PDF
571077	\$31.00	Murrplastik SCZF-EMV series EMC shield cable clip, accepts 0.31-0.43in diameter cable, 35mm DIN rail mount, with strain relief, zinc plated spring steel. Package of 5.	0.31–0.43in	PDF
571078	\$36.00	Murrplastik SCZF-EMV series EMC shield cable clip, accepts 0.43-0.63in diameter cable, 35mm DIN rail mount, with strain relief, zinc plated spring steel. Package of 5.	0.43–0.63in	PDF
571079	\$37.00	Murrplastik SCZF-EMV series EMC shield cable clip, accepts 0.67-0.87in diameter cable, 35mm DIN rail mount, with strain relief, zinc plated spring steel. Package of 5.	0.67–0.87in	PDF
571071	\$35.00	Murrplastik MSCFZ-EMV series EMC shield cable clip, accepts 0.12-0.47in diameter cable, 35mm DIN rail mount, with strain relief, zinc plated spring steel. Package of 5.	0.12–0.47in	PDF
571073	\$40.00	Murrplastik MSCFZ-EMV series EMC shield cable clip, accepts 0.28-0.71in diameter cable, 35mm DIN rail mount, with strain relief, zinc plated spring steel. Package of 5.	0.28–0.71in	PDF



[571077](#)



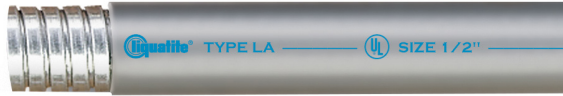
[571071](#)



SCZF-EMV / MSCFZ-EMV installation shown with cable tie securing cable to strain relief tab



Jacketed Liquid-tight Flexible Metallic Conduits – Type LA



This flexible steel conduit offers outstanding protection against wet, oily conditions and is designed for use in exposed or concealed locations. The flexible inner core is made from a spiral-wound strip of heavy-gauge, corrosion-resistant, hot-dipped galvanized steel. The 3/8" through 1-1/4" models are square-lock formed and include an integral bonding strip of copper that is enclosed within the convolutions through their entire length. The 1-1/2" and 2" models are designed with a fully interlocked strip. Suitable for the following working temperatures ranges:

Dry: -30 to 80°C [-22 to 176°F]

Wet: -30 to 60°C [-22 to 140°F]

Oil: -30 to 70°C [-22 to 158°F]

Square-locked design – Sizes 3/8" to 1-1/4"



Interlocked design – Sizes 1-1/2" and 2"



Applications

- Listed and marked for direct burial and in poured concrete
- For containment of 1000V and lower potential circuits
- Suitable as a grounding conductor when used for circuits rated up to 20A for the 3/8" and 1/2" trade sizes and 60A for the 3/4" through 1-1/4" trade sizes in lengths six feet or less per NEC Article 250.118(7).
- Installations in hazardous (classified) locations:
 - Class I Div. 2: Article 501.10(B)(2) & 501.30(B)
 - Class II Div. 1: Article 502.10(A)(2) & 502.30(B) Div 2: 502.10(B)(2)
 - Class III Div. 1: Article 503.10(A)(2) & 503.30(B) Div. 2: 503.10(A)(2)
- Installed under raised floors in data processing areas. Articles 645.5(E)(2).
- Electric signs and outline lighting over 1000V. Articles 600.7/600.32(A)(1).
- Permitted for service entrance wiring to 6ft. Article 230.43.
- Used as feeders and services at marinas and boatyards. Article 553.7(B).
- Wiring on buildings. Article 225.10.
- Conductor enclosures adjacent to motors over 600V. Article 430.223.
- Underground service, feeder, branch circuit and recreational vehicle site feeder circuit conductors. Article 551.80.
- Elevators and hoistways. Article 620.21.
- Pools and fountains. Article 680.
- Bodies of water. Article 682.
- Fire pumps. Article 695.

Approvals

- UL File E29278. Conforms to UL standard ANSI/UL-360 for Liquid-tight Flexible Steel conduit.
- RoHS2 and WEEE Compliant
- CSA certified File #LL18858



Type LA Jacketed Liquid-tight Flexible Metallic Conduits								
Part Number	Price	Trade Size [in]	Length ft [m]	Bend Ø in [mm]	Ø in [mm]		Weight [lb]	Color
					Inside Min/Max	Outside Min/Max		
LA-10-25	\$56.00	3/8	25 [7.62]	2.0 [50.8]	0.484/0.504 [12.3/12.8]	0.690/0.710 [17.5/18.0]	7.25	Machine Tool Gray
LA-10-100	\$187.00		100 [30.48]				29.0	
LA-11-25	\$64.00	1/2	25 [7.62]	3.0 [76.2]	0.622/0.642 [15.8/16.3]	0.820/0.840 [20.8/21.3]	8.0	
LA-11-100	\$216.00		100 [30.48]				32.0	
LA-12-25	\$89.00	3/4	25 [7.62]	4.2 [106.7]	0.820/0.840 [20.8/21.3]	1.030/1.050 [26.2/26.7]	13.25	
LA-12-100	\$294.00		100 [30.48]				53.0	
LA-13-25	\$130.00	1	25 [7.62]	5.5 [139.7]	1.041/1.066 [26.4/27.1]	1.290/1.315 [32.8/33.4]	20.5	
LA-13-100	\$464.00		100 [30.48]				82.0	
LA-14-50	\$306.00	1-1/4	50 [15.24]	7.0 [177.8]	1.380/1.410 [35.1/35.8]	1.630/1.660 [41.4/42.2]	51.0	
LA-15-50	\$342.00	1-1/2	50 [15.24]	4.5 [114.3]	1.575/1.600 [40.0/40.6]	1.865/1.900 [47.4/48.3]	62.0	
LA-16-50	\$421.00	2	50 [15.24]	6.0 [152.4]	2.020/2.045 [51.3/51.9]	2.340/2.375 [59.4/60.3]	72.5	



Jacketed Liquid-tight Flexible Metallic Conduits – Type ATLA



This flexible steel conduit is designed specifically for extreme hot or cold environments. The PVC jacket remains flexible at low temperature, flame retardant, and resists aging at elevated temperatures. The flexible inner core is constructed from a spiral-wound strip of heavy gauge, hot-dipped galvanized steel. The 3/8" through 1-1/4" trade sizes contain an integral bonding strip of copper. The 1-1/2" and 2" versions are designed with a fully interlocked strip. Suitable for the following working temperatures ranges:

UL – Air: -55 to 105°C [-67 to 221°F]
Wet: -55 to 60°C [-67 to 140°F]
Oil: -55 to 70°C [-67 to 158°F]

CSA – Dry: -50 to 105°C [-58 to 221°F]
Oil: -50 to 75°C [-58 to 167°F]

Square-locked design – Sizes 3/8" to 1-1/4"



Interlocked design – Sizes 1-1/2" and 2"



Applications

- High temperature machine tool wiring, outdoor installations in cold climates.
- Permitted for use in exposed or concealed locations.
- Installations under raised floors in data processing areas. Article 645.5(E)(2).
- Listed and marked for direct burial and in poured concrete.
- For containment of 1000V and lower-potential circuits.
- Permitted for service entrance wiring to 6 ft. Article 230.43.
- Suitable as a grounding conductor when used for circuits rated up to 20A for the 3/8" and 1/2" trade sizes and 60A for the 3/4" through 1-1/4" trade sizes in lengths six feet or less per NEC Article 250.118(6).
- Installations in hazardous (classified) locations:
 - Class I Div. 2: Article 501.10(B)(2) & 501.30(B)
 - Class II Div. 1: Article 502.10(A)(2) & 502.30(B) Div 2: 502.10(B)(2)
 - Class III Div. 1: Article 503.10(A)(2) & 503.30(B) Div 2: 503.10(A)(2)
- Use as feeders and services at marinas and boat yards. Article 553.7(B).
- Wiring on buildings. Article 225.10.
- Conductor enclosures adjacent to motors over 600V. Article 430.223
- Underground service, feeder, branch circuit and recreational vehicle site feeder circuit conductors. Article 551.80.
- Elevators and hoistways. Article 620.21.
- Pools and fountains. Article 680.
- Bodies of water. Article 682.
- Fire pumps. Article 695.

Approvals

- UL File E29278. Conforms to UL standard ANSI/UL-360 for Liquid-tight Flexible Steel Conduit.
- RoHS2 and WEEE compliant
- CSA certified File #LL18858



Type ATLA Jacketed Liquid-tight Flexible Metallic Conduits								
Part Number	Price	Trade Size [in]	Length ft [m]	Inside Bend Ø in [mm]	Ø in [mm]		Weight [lb]	Color
					Inside Min/Max	Outside Min/Max		
ATLA-11-100	\$249.00	1/2	100 [30.48]	3.0 [76.2]	0.622/0.642 [15.8/16.3]	0.820/0.840 [20.8/21.3]	32.0	Machine Tool Gray
ATLA-12-100	\$391.00	3/4	100 [30.48]	4.2 [106.68]	0.820/0.840 [20.8/21.3]	1.030/1.050 [26.2/26.7]	53.0	
ATLA-13-100	\$504.00	1	100 [30.48]	5.5 [139.7]	1.041/1.066 [26.4/27.1]	1.290/1.315 [32.8/33.4]	82.0	
ATLA-14-50	\$348.00	1-1/4	50 [15.24]	7.0 [177.8]	1.380/1.410 [34.1/35.8]	1.630/1.660 [41.4/42.2]	51.0	
ATLA-15-50	\$384.00	1-1/2	50 [15.24]	4.5 [114.3]	1.575/1.600 [40.0/40.6]	1.865/1.900 [47.4/48.3]	62.0	
ATLA-16-50	\$446.00	2	50 [15.24]	6.0 [152.4]	2.020/2.045 [51.3/51.9]	2.340/2.375 [59.4/60.3]	72.5	



Shielded Liquid-tight Flexible Metallic Conduits – Type SLA



This flexible shielded liquid-tight conduit is designed for wiring applications requiring protection of sensitive electronic circuits used in communications, radar and data transmission from electromagnetic and radio frequency interference. Suitable for the following working temperatures ranges:

- Dry: -30 to 80°C [-22 to 176°F]
- Wet: -30 to 60°C [-22 to 140°F]
- Oil: -30 to 70°C [-22 to 158°F]

Square-locked design – Sizes 3/8" to 1-1/4"



Interlocked design – Sizes 1-1/2" and 2"



Applications

- Intended for installation in accordance with Article 350 of the NEC (ANSI / NFPA-70).
- Suitable as an equipment grounding conductor per Article 250.118(7).
- Suitable for use in hazardous locations: Class I, Div. 2 and Classes II and III.
- Air handling equipment (HVAC)
- Test & measurement equipment
- Data centers
- Variable speed drives
- Radio broadband/antenna
- Solar/wind energy
- Accepts standard metallic liquid-tight fittings.
- Ship building
- Medical diagnostics equipment
- Wireless communications

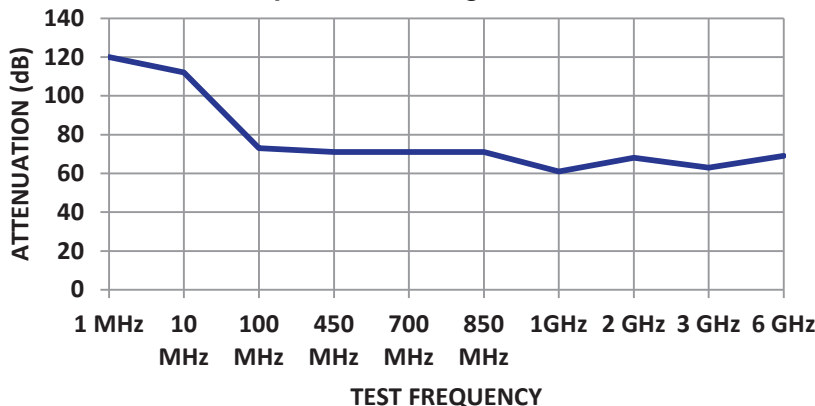
Approvals

- UL File E29278. Conforms to UL standard ANSI/UL-360 for liquid-tight flexible steel conduit.
- RoHS2 and WEEE compliant



Type SLA Shielded Jacketed Liquid-tight Flexible Metallic Conduits								
Part Number	Price	Trade Size [in]	Length ft [m]	Inside Bend Ø in [mm]	Ø in [mm]		Weight [lb]	Color
					Inside Min/Max	Outside Min/Max		
SLA-10-100	\$749.00	3/8	100 [30.48]	2.0 [50.8]	0.484/0.504 [12.3/12.8]	0.690/0.710 [17.5/18.0]	29.0	Black
SLA-11-100	\$831.00	1/2	100 [30.48]	3.0 [76.2]	0.622/0.642 [15.8/16.3]	0.820/0.840 [20.8/21.3]	32.0	
SLA-12-100	\$1,335.00	3/4	100 [30.48]	4.2 [106.68]	0.820/0.840 [20.8/21.3]	1.030/1.050 [26.2/26.7]	53.0	
SLA-13-100	\$1,996.00	1	100 [30.48]	5.5 [139.7]	1.041/1.066 [26.4/27.1]	1.290/1.315 [32.8/33.4]	82.0	

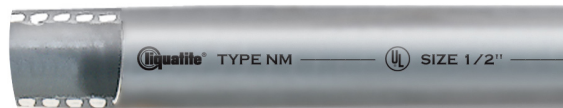
Comparative Shielding Effectiveness



Note: The spectrum of test frequency is from 1MHz to 10MHz Electric Field, to 100MHz to 1GHz Planewave Field and 2GHz to 6GHz Microwave Field. Tests were performed per MIL-STD-285 on 1" trade size conduit using standard liquid-tight fittings. Results are based on controlled laboratory conditions and may vary in actual field installed conditions.



Liquid-tight Flexible Non-Metallic Conduits -Type NM



This is a general purpose, non-metallic liquid-tight conduit that offers excellent protection to wiring from abrasion, sunlight, mild acids, alkaline, and oils. Helically wound integral Type B construction containing a spiral of rigid PVC reinforcement embedded within the PVC wall. Suitable for the following working temperatures ranges:

Dry: -20 to 80°C [-4 to 176°F]

Wet: -20 to 60°C [-4 to 140°F]

Oil: -20 to 70°C [-4 to 158°F]

Applications

- Intended for installation in accordance with Article 356 of the NEC (ANSI / NFPA-70) for flexible liquid-tight non-metallic conduit (LFNC-B or FPMC-B).
- For containment of 1000V and lower potential circuits.
- Listed and marked for outdoor use.
- Listed and marked for direct burial and in poured concrete.
- Installations in hazardous (classified) locations:
 - Class I Div. 2 Article 501
 - Class II Div. 1 & 2 Article 502
 - Class III Div. 1 & 2 Article 503
- Electric signs and outdoor lighting over 1000V. Article 600.32(A).
- Wiring methods for pools and spas. Article 680.
- Conforms to the requirements of section 14.5.5 of the Electrical Standard for Industrial Machinery NFPA-79.
- Suitable for use with standard metal liquid-tight fittings or non-metallic fittings marked for FPMC-B or LFNC-B for liquid-tight flexible non-metallic conduit Type B.

Approvals

- UL File E79308. Conforms to UL standard ANSI/UL 1660 type B.
- RoHS2 and WEEE compliant
- CSA certified File #LL230485



Type NM Liquid-tight Flexible Non-Metallic Conduits								
Part Number	Price	Trade Size [in]	Length ft [m]	Bend Ø in [mm]	Ø in [mm]		Weight [lb]	Color
					Inside Min/Max	Outside Min/Max		
NM-10-50	\$71.00	3/8	50 [15.24]	2.0 [50.8]	0.484/0.504 [12.3/12.8]	0.690/0.710 [17.5/18.0]	5.0	Machine Tool Gray
NM-10-100	\$108.00		100 [30.48]				10.0	
NM-11-50	\$71.00	1/2	50 [15.24]	3.25 [82.55]	0.622/0.642 [15.8/16.3]	0.820/0.840 [20.8/21.3]	5.5	
NM-11-100	\$108.00		100 [30.48]				11.0	
NM-12-50	\$90.00	3/4	50 [15.24]	4.25 [107.95]	0.820/0.840 [20.8/21.3]	1.030/1.050 [26.2/26.7]	7.5	
NM-12-100	\$132.00		100 [30.48]				15.0	
NM-13-50	\$139.00	1	50 [15.24]	6.5 [165.1]	1.041/1.066 [26.4/27.1]	1.290/1.315 [32.8/33.4]	12.5	
NM-13-100	\$219.00		100 [30.48]				25.0	
NM-14-100	\$342.00	1-1/4	100 [30.48]	8.0 [203.2]	1.380/1.410 [35.1/35.8]	1.630/1.660 [41.4/42.2]	34.0	
NM-15-50	\$229.00	1-1/2	50 [15.24]	9.0 [228.6]	1.575/1.600 [40.0/40.6]	1.865/1.900 [47.4/48.3]	21.0	
NM-16-50	\$278.00	2	50 [15.24]	11.0 [279.4]	2.020/2.045 [51.3/51.9]	2.340/2.375 [59.4/60.3]	30.0	

I-Flex Flexible Liquid-Tight PVC Tubing

Overview

This leak-proof, flexible tubing provides electrical wire protection during routing applications. I-Flex can be used in extremely tight quarters, thanks to its flexibility. It is just right for basic applications where fast installation and maximum flexibility are a must, and is the solution in areas where movement, vibration, or flexing can be a problem. This tubing provides excellent tensile strength and the smooth interior wall protects wiring. All models are available in light gray or black.



Applications

- Where oil resistance is required, or where water corrosion or ultraviolet light is a problem
- Protection of fiber optic cable
- Installing instrumentation or control cable
- Wire harness protection
- Packaging equipment
- Marine applications

Features

- UL recognized File E311916
- CE certified
- IP65 rated for watertight applications
- Operating temperature: -4 to 140°F [-20 to 60°C]



IBOCO Gray I-Flex Tubing								Use With This Straight Connector		Use With This 90° Connector	
Part Number	Price	Trade Size in	Actual ID mm [in]	Actual OD mm [in]	Min. Bend Rad. mm [in]	Weight lb/98 ft	Coil Length m [ft]	Part Number	Price	Part Number	Price
GSI-12G	\$38.50	3/8	11.94 [0.47]	16.51 [0.65]	12.45 [0.49]	6.1	30 [98]	RPS-12G	\$28.50	CUR-12G	\$60.00
GSI-16G	\$52.00	1/2	16.00 [0.63]	20.57 [0.81]	16.00 [0.63]	7.1	30 [98]	RPS-16G	\$34.00	CUR-16G	\$71.00
GSI-20G	\$60.00	3/4	20.07 [0.79]	24.64 [0.97]	21.08 [0.83]	9.6	30 [98]	RPS-20G	\$40.00	CUR-20G	\$49.00
GSI-25G	\$107.00	1	24.89 [0.98]	30.48 [1.2]	27.94 [1.10]	13.4	30 [98]	RPS-25G	\$30.50	CUR-25G	\$23.00
GSI-32G	\$148.00	1-¼	31.75 [1.25]	38.10 [1.5]	35.56 [1.40]	17.7	30 [98]	RPS-32G	\$61.00	CUR-32G	\$59.00
GSI-40G	\$187.00	1-½	39.88 [1.57]	46.48 [1.83]	40.39 [1.59]	23.6	30 [98]	RPS-40G	\$45.00	N/A	
GSI-50G	\$242.00	2	50.04 [1.97]	56.90 [2.24]	51.82 [2.04]	31.2	30 [98]	RPS-50G	\$89.00	N/A	

IBOCO Black I-Flex Tubing								Use With This Straight Connector		Use With This 90° Connector	
Part Number	Price	Trade Size in	Actual ID mm [in]	Actual OD mm [in]	Min. Bend Rad. mm [in]	Weight lbs/98 ft	Coil Length m [ft]	Part Number	Price	Part Number	Price
GSI-12K	\$38.50	3/8	11.94 [0.47]	16.51 [0.65]	12.45 [0.49]	6.1	30 [98]	RPS-12K	\$28.50	CUR-12K	\$60.00
GSI-16K	\$52.00	1/2	16.00 [0.63]	20.57 [0.81]	16.00 [0.63]	7.1	30 [98]	RPS-16K	\$34.00	CUR-16K	\$71.00
GSI-20K	\$60.00	3/4	20.07 [0.79]	24.64 [0.97]	21.08 [0.83]	9.6	30 [98]	RPS-20K	\$40.00	CUR-20K	\$49.00
GSI-25K	\$107.00	1	24.89 [0.98]	30.48 [1.2]	27.94 [1.10]	13.4	30 [98]	RPS-25K	\$30.50	CUR-25K	\$23.00
GSI-32K	\$148.00	1-¼	31.75 [1.25]	38.10 [1.5]	35.56 [1.40]	17.7	30 [98]	RPS-32K	\$61.00	CUR-32K	\$59.00
GSI-40K	\$187.00	1-½	39.88 [1.57]	46.48 [1.83]	40.39 [1.59]	23.6	30 [98]	RPS-40K	\$45.00	N/A	
GSI-50K	\$242.00	2	50.04 [1.97]	56.90 [2.24]	51.82 [2.04]	31.2	30 [98]	RPS-50K	\$89.00	N/A	

Straight and Right-Angle Connectors for I-Flex Flexible Liquid-Tight PVC Tubing

Overview

These straight and right angle (90°) liquid-tight non-metallic connectors are made to fit our line of flexible liquid-tight PVC tubing. Used together, they ensure leak-proof integrity on motors, processing equipment, pumps, etc. Available in light gray or black.

Choose these liquid-tight connectors for:

- A liquid-tight environmental seal
- Quick re-entry for cable repair or rerouting features
- Seal gaskets included with each pack of connectors
- Material: Polypropylene
- Suitable for indoor and outdoor applications
- Corrosion resistant
- Resists solvents, grease, oil, alcohol, gasoline, and saltwater
- Adjustable collar
- Constructed of fire-resistant Polypropylene
- Operating temperature: -4 to 140°F [-20 to 60°C]
- UL recognized File E311916
- CE certified
- IP65 rated for watertight applications



IBOCO Gray I-Flex Tubing Straight Connectors					
Part Number	Price	Trade Size in	Thread Dimensions		Package Quantity
			Actual ID mm [in]	Actual OD mm [in]	
RPS-12G	\$28.50	3/8	11.7 [0.46]	16.4 [0.65]	20
RPS-16G	\$34.00	1/2	15.6 [0.62]	20.7 [0.81]	20
RPS-20G	\$40.00	3/4	19.6 [0.77]	26.2 [1.03]	20
RPS-25G	\$30.50	1	24.8 [0.98]	33.0 [1.30]	10
RPS-32G	\$61.00	1-1/4	31.9 [1.26]	41.5 [1.64]	10
RPS-40G	\$45.00	1-1/2	39.9 [1.57]	47.5 [1.87]	5
RPS-50G	\$89.00	2	49.6 [1.95]	59.2 [2.33]	5

Note: European gas thread

IBOCO Gray I-Flex Tubing 90° Connectors					
Part Number	Price	Trade Size in	Thread Dimensions		Package Quantity
			Actual ID mm [in]	Actual OD mm [in]	
CUR-12G	\$60.00	3/8	11.7 [0.46]	16.4 [0.65]	25
CUR-16G	\$71.00	1/2	15.6 [0.62]	20.7 [0.81]	25
CUR-20G	\$49.00	3/4	19.6 [0.77]	26.2 [1.03]	15
CUR-25G	\$23.00	1	24.8 [0.98]	33.0 [1.30]	5
CUR-32G	\$59.00	1-1/4	31.9 [1.26]	41.5 [1.64]	5

Note: European gas thread

IBOCO Black I-Flex Tubing Straight Connectors					
Part Number	Price	Trade Size in	Thread Dimensions		Package Quantity
			Actual ID mm [in]	Actual OD mm [in]	
RPS-12K	\$28.50	3/8	11.7 [0.46]	16.4 [0.65]	20
RPS-16K	\$34.00	1/2	15.6 [0.62]	20.7 [0.81]	20
RPS-20K	\$40.00	3/4	19.6 [0.77]	26.2 [1.03]	20
RPS-25K	\$30.50	1	24.8 [0.98]	33.0 [1.30]	10
RPS-32K	\$61.00	1-1/4	31.9 [1.26]	41.5 [1.64]	10
RPS-40K	\$45.00	1-1/2	39.9 [1.57]	47.5 [1.87]	5
RPS-50K	\$89.00	2	49.6 [1.95]	59.2 [2.33]	5

Note: European gas thread

IBOCO Black I-Flex Tubing 90° Connectors					
Part Number	Price	Trade Size in	Thread Dimensions		Package Quantity
			Actual ID mm [in]	Actual OD mm [in]	
CUR-12K	\$60.00	3/8	11.7 [0.46]	16.4 [0.65]	25
CUR-16K	\$71.00	1/2	15.6 [0.62]	20.7 [0.81]	25
CUR-20K	\$49.00	3/4	19.6 [0.77]	26.2 [1.03]	15
CUR-25K	\$23.00	1	24.8 [0.98]	33.0 [1.30]	5
CUR-32K	\$59.00	1-1/4	31.9 [1.26]	41.5 [1.64]	5

Note: European gas thread

RACO® Liquid-Tight Connectors

Straight Connectors Applications

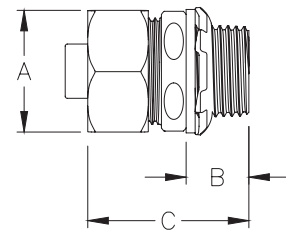
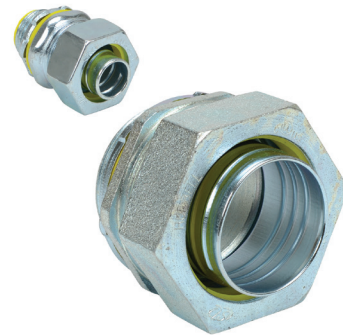
- For use in outdoor or indoor locations on flexible metallic liquid-tight conduit and Type B flexible non-metallic liquid-tight conduit
- Use to positively bond the conduit to a box or enclosure
- RACO® liquid-tight connectors are suitable for use in Class I, Div 2; Class II, Div 1 & 2; and Class III, Div 1 & 2 hazardous locations

Features

- Patented split gland-ring is designed to slip onto the conduit quickly and to rip the jacket of the conduit, speeding installation, assuring a perfect seal, and preventing pullouts
- All components are reusable. RACO® liquid-tight connectors may be easily disassembled and reused after years of service
- Included sealing washer provides a liquid-tight seal when terminating the connector in a threadless opening
- Heavy duty locknut included with every RACO® liquid-tight connector assures continuity of ground
- All steel/iron components are zinc-electroplated for added corrosion protection
- Dry Temperature -55 to 105°C [-67 to 221°F]

Approvals

- Standard 514B, UL Listed E195969
- CSA Certificate 1456072



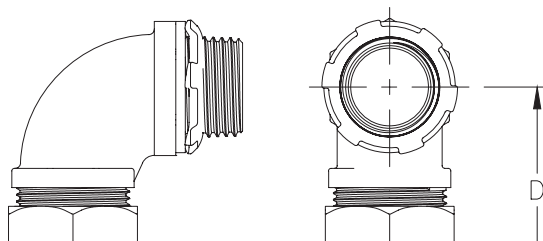
Please see our website www.AutomationDirect.com for complete engineering drawings.

RACO Liquid-tight Straight Connectors									
Part Number	Trade Size (in)	Insulated	Qty	Price	Dimensions – Inches [mm]				Compression Nut & Body Material
					A	B	C	Thread	
3401-8	3/8	N	1	\$2.25	1.06 [26.92]	0.55 [13.97]	1.41 [35.81]	½ in – 14 NPT	Zinc electroplated steel nut and body
3401		N	50	\$107.00					
3511RAC		Y	25	\$61.00					
3402-8	1/2	N	1	\$2.25	1.17 [29.72]	0.54 [13.72]	1.56 [39.62]	½ in – 14 NPT	
3402		N	50	\$107.00					
3512-8		Y	1	\$2.75					
3512RAC		Y	50	\$121.00					
3403-8	3/4	N	1	\$3.00	1.40 [35.56]	0.58 [14.73]	1.47 [37.34]	¾ in – 14 NPT	
3403		N	25	\$81.00					
3513-8		Y	1	\$3.75					
3513RAC		Y	25	\$88.00					
3404-8	1	N	1	\$5.50	1.71 [43.43]	0.65 [16.51]	1.79 [45.47]	1 in – 11-½ NPT	
3404		N	10	\$48.00					
3514-8		Y	1	\$6.00					
3514RAC		Y	10	\$54.00					
3405-8	1-1/4	N	1	\$10.50	2.17 [55.12]	0.69 [17.53]	1.89 [48.01]	1½ in – 11-½ NPT	Zinc electroplated malleable iron nut and body
3405		N	10	\$94.00					
3515RAC		Y	10	\$109.00					
3406-8	1-1/2	N	1	\$14.50	2.40 [60.96]	0.71 [18.03]	2.08 [52.83]	1½ in – 11-½ NPT	
3408-8	2	N	1	\$22.50	3.00 [76.20]	0.75 [19.05]	2.28 [57.91]	2 in – 11-½ NPT	

Note: Heavy-duty locknut on all models is zinc-plated steel

RACO® Liquid-Tight Connectors

90° Connectors



Please see our website www.AutomationDirect.com for complete engineering drawings.

Applications

- For use in outdoor or indoor locations on flexible metallic liquid-tight conduit and Type B flexible non-metallic liquid-tight conduit
- Use to positively bond the conduit to a box or enclosure
- RACO® liquid-tight connectors are suitable for use in Class I, Div 2; Class II, Div 1 & 2; and Class III, Div 1 & 2 hazardous locations

Features

- Patented split gland-ring is designed to slip onto the conduit quickly and to grip the jacket of the conduit, speeding installation, assuring a perfect seal, and preventing pullouts
- All components are reusable - RACO® liquid-tight connectors may be easily disassembled and reused after years of service
- Included sealing washer provides a liquid-tight seal when terminating the connector in a threadless opening
- Heavy duty locknut included with every RACO® liquid-tight connector assures continuity of ground
- All steel/iron components are zinc-electroplated for added corrosion protection
- Dry Temperature -55 to 105°C [-67 to 221°F]

Approvals

- Standard 514B, UL Listed E195969
- CSA Certificate 1456072

RACO Liquid-tight 90° Connectors										
Part Number	Trade Size (in)	Insulated	Qty	Price	Dimensions – Inches [mm]					Compression Nut & Body Material
					A	B	C	D	Thread	
3421-8	3/8	N	1	\$4.00	1.06 [26.92]	0.55 [13.97]	1.40 [35.56]	1.70 [43.18]	½ in – 14 NPT	Zinc electroplated steel nut and malleable iron body
3421		N	25	\$81.00						
3541RAC		Y	25	\$109.00						
3422-8	1/2	N	1	\$4.00	1.09 [27.69]	0.55 [13.97]	1.41 [35.81]	1.73 [43.94]	½ in – 14 NPT	
3422		N	25	\$81.00						
3542-8		Y	1	\$4.75						
3542		Y	25	\$109.00						
3423-8	3/4	N	1	\$6.00	1.30 [33.02]	0.59 [14.99]	1.61 [40.89]	2.02 [51.31]	¾ in – 14 NPT	
3423		N	25	\$132.00						
3543-8		Y	1	\$7.25						
3543		Y	25	\$161.00						
3424-8	1	N	1	\$12.50	1.58 [40.13]	0.65 [16.51]	1.92 [48.77]	2.31 [58.67]	1 in – 11-½ NPT	
3424		N	10	\$115.00						
3544-8		Y	1	\$12.50						
3544		Y	10	\$121.00						
3425-8	1-1/4	N	1	\$21.00	1.97 [50.04]	0.69 [17.53]	2.02 [51.31]	2.67 [67.82]	1-¼ in – 11-½ NPT	Zinc electroplated malleable iron nut and body
3425		Y	10	\$189.00						
3545		Y	10	\$204.00						
3426-8	1-1/2	N	1	\$23.50	2.22 [56.39]	0.71 [18.03]	2.25 [57.15]	3.05 [77.47]	1-½ in – 11-½ NPT	
3428-8	2	N	1	\$35.00	3.00 [76.20]	0.75 [19.05]	2.47 [62.74]	3.30 [83.82]	2 in – 11-½ NPT	

Note: Heavy-duty locknut on all models is zinc-plated steel