

# What is a Cable Gland?

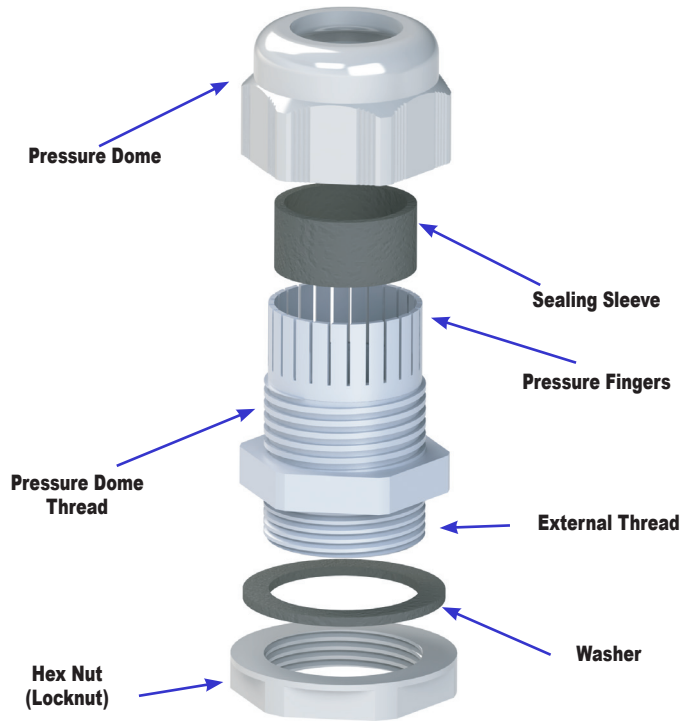
A cable gland, commonly known as a cable connector or fitting, is a device designed to attach and secure the end of a cable to electrical equipment. Cable glands provide strain relief and typically seal out dust, dirt and even liquids.

Cable glands are generally used throughout a number of industries in conjunction with cable and wiring used in electrical instrumentation and automation systems. They may be used on all types of electrical power, control, instrumentation, data and telecommunications cables. A key function of cable glands is to seal and terminate electrical equipment to ensure that the characteristics of the enclosure which the cable enters can be maintained.

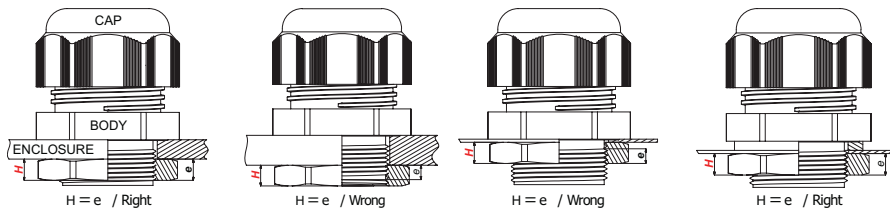
## Typical Cable Gland Construction Materials:

- Plastic
- Brass
- Aluminium
- Stainless steel

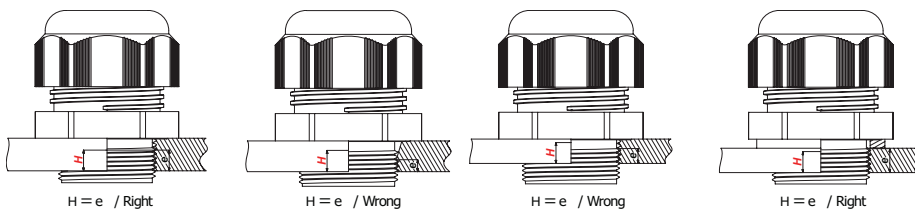
Although cable glands are often called "connectors," a technical distinction can be made in the terminology, which differentiates them from quick-disconnect, conducting electrical connectors. The distinction is often not made.



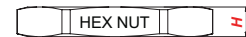
## Assembling with hex nut on non threaded enclosure



## Assembling with hex nut on threaded enclosure

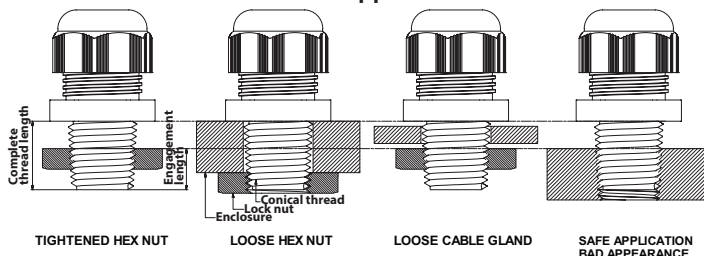


- The engaged thread length "e" must be equal or longer than relevant hex nut thickness "H"
- The thread dimensions and tolerances on threaded enclosures must coincide with the relevant thread standard.
- The gland body must be mounted to the enclosure.
- The body or the hex nut must be tightened according to the recommended torque.
- It is recommended that a double wrench be used for non-threaded enclosures.
- For cable assembly, the cap must be tightened according to the recommended torque.
- During cable assembly or disassembly, the gland body must be kept fixed. Utilize a double wrench for this purpose.



Relevant Hex Nut Thickness (mm)		
Brass	±0.5	Plastic
M12	2.8	-
PG7 to PG9	2.8	-
M16	3	-
PG11 to PG16	3	-
M20	3.5	-
PG21	3.5	-
M25	4	-
PG29	4	-
M32 to M50	5	M12 to M16
PG36 to PG42	5	PG7 to PG11
NPT 3/8 to 1/2	5	-
PG48	5.5	-
M63	6	M29 to M40
NPT 3/4 to 1	6	PG13.5 to PG16
-	7	M32 to M40
-	7	NPT 3/8 to 1'
-	7	PG21 to PG29
-	8	M50 to M63
-	8	PG36 to PG48

## NPT Thread Application



# bimed Standard Series Plastic Euro Metric Thread Cable Glands

**Material**

- Body: PA 6 (Polyamide 6)
- Cap: PA 6 ( Polyamide 6)
- Seal: CR (Chloroprene Rubber)

**Flammability**

- V2 (According to UL 94)

**Protection Class**

- IP68 - 5 Bar [72.5 psi]

**Operating Temperature**

- Permanent: -20 to +100°C [-4 to +212°F]
- Intermittent: -30 to +150°C [-22 to +302°F]

**Attachment Thread**

- EN 60423

**Body**

- Manufactured according to the requirements of EN 50262

**Approvals**

- UL Recognized or Listed File # E199260 \*
- CSA File # 190896
- CE



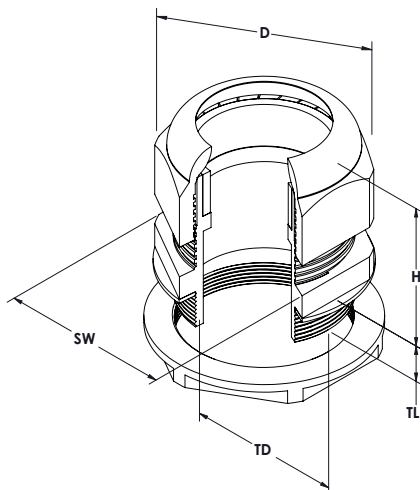
\*Note: To obtain the most current agency approval information, see the Agency Compliance & Certifications Checklist section on the specific part number's web page.



## Plastic Euro Metric Thread Cable Glands

Light Gray	Price	Black	Price	Qty	Thread Size	Clamping Range mm [in]	Recommended Tightening Torque		Dimensions mm [in]				
							N-m [lb-ft]	Tolerance	SW	TL	H	D	TD
<a href="#">BM-ENX-1S-W</a>	\$2.75	<a href="#">BM-ENX-2S-W</a>	\$2.75	5	M12 x 1.5 mm	3.0 - 6.5 [0.12 - 0.26]	2.0 [1.48]	±0.5 [±0.37]	15.0 [0.59]	8.0 [0.31]	22.0 [0.87]	17.1 [0.67]	12.0 [0.47]
<a href="#">BM-ENX-11-W</a>	\$2.75	<a href="#">BM-ENX-21-W</a>	\$2.75	5	M16 x 1.5 mm	4.0 - 8.0 [0.16 - 0.31]	2.5 [1.84]	±0.5 [±0.37]	19.0 [0.75]	8.0 [0.31]	25.0 [0.98]	21.6 [0.85]	16.0 [0.63]
<a href="#">BM-ENX-12-W</a>	\$3.75	<a href="#">BM-ENX-22-W</a>	\$3.75	5	M20 x 1.5 mm	6.0 - 12.0 [0.24 - 0.47]	5.0 [3.69]	±0.5 [±0.37]	24.0 [0.94]	10.0 [0.39]	29.0 [1.14]	27.7 [1.09]	20.0 [0.79]
<a href="#">BM-ENX-13-W</a>	\$5.00	<a href="#">BM-ENX-23-W</a>	\$5.00	5	M25 x 1.5 mm	11.0 - 17.0 [0.43 - 0.67]	5.0 [3.69]	±1.0 [±0.74]	29.0 [1.14]	8.0 [0.31]	34.0 [1.34]	32.5 [1.28]	25.0 [0.98]
<a href="#">BM-ENX-14-W</a>	\$11.00	<a href="#">BM-ENX-24-W</a>	\$11.00	5	M32 x 1.5 mm	15.0 - 21.0 [0.59 - 0.86]	6.0 [4.43]	±1.0 [±0.74]	36.0 [1.42]	10.0 [0.39]	41.0 [1.61]	41.0 [1.61]	32.0 [1.26]
<a href="#">BM-ENX-15-W</a>	\$7.75	<a href="#">BM-ENX-25-W</a>	\$7.75	2	M40 x 1.5 mm	19.0 - 28.0 [0.74 - 1.10]	5.0 [3.69]	±1.0 [±0.74]	46.0 [1.81]	10.0 [0.39]	45.5 [1.79]	52.4 [2.06]	40.0 [1.57]
<a href="#">BM-ENX-16-W</a>	\$15.50	<a href="#">BM-ENX-26-W</a>	\$15.50	2	M50 x 1.5 mm	30.0 - 38.0 [1.18 - 1.50]	22 [16.23]	±2.0 [±1.48]	60.0 [2.36]	18.0 [0.71]	49.0 [1.93]	67.7 [2.67]	50.0 [1.97]
<a href="#">BM-ENX-17-W</a>	\$16.00	<a href="#">BM-ENX-27-W</a>	\$16.00	2	M63 x 1.5 mm	34.0 - 44.0 [1.34 - 1.73]	23 [16.96]	±2.5 [±1.84]	65.0 [2.56]	18.0 [0.71]	49.0 [1.93]	72.2 [2.84]	63.0 [2.48]

Note: Hex nut and washer included.



See our website: [www.AutomationDirect.com](http://www.AutomationDirect.com) for complete engineering drawings

UL Part # Cross Reference	
UL Part Number	ADC Part Number
BM-EN-1S	<a href="#">BM-ENX-1S-W</a>
BM-EN-11	<a href="#">BM-ENX-11-W</a>
BM-EN-12	<a href="#">BM-ENX-12-W</a>
BM-EN-13	<a href="#">BM-ENX-13-W</a>
BM-EN-14	<a href="#">BM-ENX-14-W</a>
BM-EN-15	<a href="#">BM-ENX-15-W</a>
BM-EN-16	<a href="#">BM-ENX-16-W</a>
BM-EN-17	<a href="#">BM-ENX-17-W</a>
BM-EN-2S	<a href="#">BM-ENX-2S-W</a>
BM-EN-21	<a href="#">BM-ENX-21-W</a>
BM-EN-22	<a href="#">BM-ENX-22-W</a>
BM-EN-23	<a href="#">BM-ENX-23-W</a>
BM-EN-24	<a href="#">BM-ENX-24-W</a>
BM-EN-25	<a href="#">BM-ENX-25-W</a>
BM-EN-26	<a href="#">BM-ENX-26-W</a>
BM-EN-27	<a href="#">BM-ENX-27-W</a>

# bimed Standard Series Plastic PG Thread Cable Glands

### Material

- Body: PA 6 (Polyamide 6)
- Cap: PA 6 ( Polyamide 6)
- Seal: CR (Chloroprene Rubber)

### Flammability

- V2 (According to UL 94)

### Protection Class

- IP68 - 5 Bar [72.5 psi]

### Operating Temperature

- Permanent: -20 to +100°C [-4 to +212°F]
- Intermittent: -30 to +150°C [-22 to +302°F]

### Attachment Thread

- DIN 40430

### Body

- Manufactured according to the requirements of EN 50262

### Approvals

- UL Recognized or Listed File # E199260 \*
- CSA File # 190896
- CE



\*Note: To obtain the most current agency approval information, see the Agency Compliance & Certifications Checklist section on the specific part number's web page.



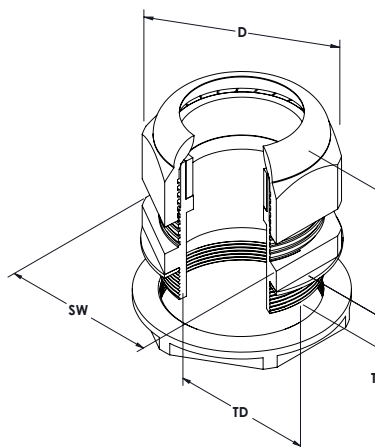
## Plastic PG Thread Cable Glands

Light Gray	Price	Black	Price	Qty	Thread Size	Clamping Range mm [in]	Recommended Tightening Torque		Dimensions – mm [in]				
							N-m [lb-ft]	Tolerance	SW	TL	H	D	TD
<a href="#">BMX-11-W</a>	\$2.75	<a href="#">BMX-21-W</a>	\$2.75	5	PG7	3.0 - 6.5 [0.12 - 0.26]	2.0 [1.48]	±0.5 [±0.37]	15.0 [0.59]	8.0 [0.31]	23.0 [0.91]	17.2 [0.68]	12.4 [0.49]
<a href="#">BMX-12-W</a>	\$2.75	<a href="#">BMX-22-W</a>	\$2.75	5	PG9	4.0 - 8.0 [0.16 - 0.31]	2.5 [1.84]	±0.5 [±0.37]	19.0 [0.75]	8.0 [0.31]	26.5 [1.04]	21.9 [0.86]	15.1 [0.59]
<a href="#">BMX-13-W</a>	\$2.75	<a href="#">BMX-23-W</a>	\$2.75	5	PG11	5.0 - 10.0 [0.20 - 0.39]	2.5 [1.84]	±0.5 [±0.37]	22.0 [0.87]	8.0 [0.31]	22.0 [0.87]	25.2 [0.99]	18.5 [0.73]
<a href="#">BMX-14-W</a>	\$3.75	<a href="#">BMX-24-W</a>	\$3.75	5	PG13.5	6.0 - 12.0 [0.24 - 0.47]	5.0 [3.69]	±0.5 [±0.37]	24.0 [0.94]	10.0 [0.39]	29.5 [1.16]	27.7 [1.09]	20.3 [0.80]
<a href="#">BMX-15-W</a>	\$4.50	<a href="#">BMX-25-W</a>	\$4.50	5	PG16	10.0 - 14.0 [0.39 - 0.55]	5.5 [4.06]	±0.5 [±0.37]	27.0 [1.06]	10.0 [0.39]	32.5 [1.28]	31.0 [1.22]	22.5 [0.89]
<a href="#">BMX-16-W</a>	\$5.50	<a href="#">BMX-26-W</a>	\$5.00	5	PG21	13.0 - 18.0 [0.51 - 0.71]	5.5 [4.06]	±0.5 [±0.37]	33.0 [1.30]	11.0 [0.43]	35.0 [1.38]	37.2 [1.46]	28.1 [1.11]
<a href="#">BMX-17-W</a>	\$11.50	<a href="#">BMX-27-W</a>	\$11.50	5	PG29	18.0 - 25.0 [0.71 - 0.98]	7.5 [5.53]	±0.5 [±0.37]	42.0 [1.65]	11.0 [0.43]	42.0 [1.65]	47.2 [1.86]	37.0 [1.46]
<a href="#">BMX-18-W</a>	\$22.50	<a href="#">BMX-28-W</a>	\$22.50	2	PG36	22.0 - 32.0 [0.87 - 1.26]	15.0 [11.06]	±0.5 [±0.37]	53.0 [2.09]	13.0 [0.51]	52.0 [2.05]	60.0 [2.36]	46.8 [1.84]
<a href="#">BMX-19-W</a>	\$15.50	<a href="#">BMX-29-W</a>	\$15.50	2	PG42	30.0 - 38.0 [1.18 - 1.50]	18.0 [13.28]	±1.0 [±0.74]	60.0 [2.36]	13.0 [0.51]	54.5 [2.15]	67.7 [2.67]	54.0 [2.13]
<a href="#">BMX-20-W</a>	\$16.00	<a href="#">BMX-30-W</a>	\$16.00	2	PG48	34.0 - 44.0 [1.34 - 1.73]	20.0 [14.75]	±1.0 [±0.74]	65.0 [2.56]	14.0 [0.55]	54.5 [2.15]	72.2 [2.84]	59.0 [2.32]

Note: Hex nut and washer included.

### UL Part # Cross Reference

UL Part Number	ADC Part Number	UL Part Number	ADC Part Number
BS-11	<a href="#">BMX-11-W</a>	BS-21	<a href="#">BMX-21-W</a>
BS-12	<a href="#">BMX-12-W</a>	BS-22	<a href="#">BMX-22-W</a>
BS-13	<a href="#">BMX-13-W</a>	BS-23	<a href="#">BMX-23-W</a>
BS-14	<a href="#">BMX-14-W</a>	BS-24	<a href="#">BMX-24-W</a>
BS-15	<a href="#">BMX-15-W</a>	BS-25	<a href="#">BMX-25-W</a>
BS-16	<a href="#">BMX-16-W</a>	BS-26	<a href="#">BMX-26-W</a>
BS-17	<a href="#">BMX-17-W</a>	BS-27	<a href="#">BMX-27-W</a>
BS-18	<a href="#">BMX-18-W</a>	BS-28	<a href="#">BMX-28-W</a>
BS-19	<a href="#">BMX-19-W</a>	BS-29	<a href="#">BMX-29-W</a>
BS-20	<a href="#">BMX-20-W</a>	BS-30	<a href="#">BMX-30-W</a>



See our website: [www.AutomationDirect.com](http://www.AutomationDirect.com) for complete Engineering drawings

# bimed Standard Series Plastic NPT Thread Cable Glands

**Material**

- Body: PA 6 (Polyamide 6)
- Cap: PA 6 ( Polyamide 6)
- Seal: CR (Chloroprene Rubber)

**Flammability**

- V2 (According to UL 94)

**Protection Class**

- IP68 - 5 Bar [72.5 psi]

**Operating Temperature**

- Permanent: -20 to +100°C [-4 to +212°F]
- Intermittent: -30 to +150°C [-22 to +302°F]

**Attachment Thread**

- ANSI B 1.20.1

**Body**

- Manufactured according to the requirements of EN 50262

**Approvals**

- UL Recognized or Listed File # E199260 \*
- CSA File # 190896
- CE



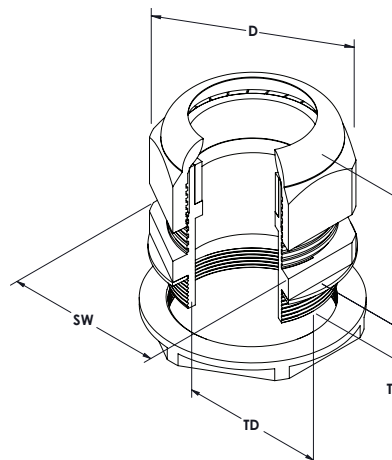
\*Note: To obtain the most current agency approval information, see the Agency Compliance & Certifications Checklist section on the specific part number's web page.



Plastic NPT Thread Cable Glands													
Light Gray	Price	Black	Price	Qty	Thread Size	Clamping Range mm [in]	Recommended Tightening Torque		Dimensions mm [in]				
							N-m [lb-ft]	Tolerance	SW	TL	H	D	TD
<a href="#">BSPAX-11-W</a>	\$5.00	<a href="#">BSPAX-21-W</a>	\$5.00	5	NPT 3/8"	5.0 - 10.0 [0.20 - 0.39]	2.5 [1.84]	±0.5 [±0.37]	22.0 [0.87]	15.0 [0.59]	29.0 [1.14]	25.1 [0.99]	17.1 [0.67]
<a href="#">BSPBX-12-W</a>	\$6.25	<a href="#">BSPBX-22-W</a>	\$6.25	5	NPT 1/2"	6.0 - 12.0 [0.24 - 0.47]	4.0 [2.95]	±0.5 [±0.37]	23.9 [0.94]	15.0 [0.59]	30.5 [1.20]	27.7 [1.09]	21.3 [0.84]
<a href="#">BSPCX-12-W</a>	\$8.50	<a href="#">BSPCX-22-W</a>	\$8.50	5	NPT 1/2"	10.0 - 14.0 [0.39 - 0.55]	5.0 [3.69]	±0.5 [±0.37]	27.0 [1.06]	15.0 [0.59]	32.1 [1.26]	31.0 [1.22]	20.3 [0.80]
<a href="#">BSPDX-13-W</a>	\$10.00	<a href="#">BSPDX-23-W</a>	\$10.00	5	NPT 3/4"	13.0 - 18.0 [0.51 - 0.71]	5.5 [4.06]	±0.5 [±0.37]	33.0 [1.30]	15.0 [0.59]	35.4 [1.39]	37.2 [1.46]	26.7 [1.05]
<a href="#">BSPX-14-W</a>	\$20.00	<a href="#">BSPX-24-W</a>	\$20.00	5	NPT 1"	18.0 - 25.0 [0.71 - 0.98]	7.5 [5.53]	±0.5 [±0.37]	41.9 [1.65]	18.0 [0.71]	40.5 [1.59]	47.5 [1.87]	33.4 [1.31]

Note: Hex nut and washer included.

UL Part # Cross Reference	
UL Part Number	ADC Part Number
BSPA-11	<a href="#">BSPAX-11-W</a>
BSPB-12	<a href="#">BSPBX-12-W</a>
BSPC-12	<a href="#">BSPCX-12-W</a>
BSPD-13	<a href="#">BSPDX-13-W</a>
BSP-14	<a href="#">BSPX-14-W</a>
BSPA-21	<a href="#">BSPAX-21-W</a>
BSPB-22	<a href="#">BSPBX-22-W</a>
BSPC-22	<a href="#">BSPCX-22-W</a>
BSPD-23	<a href="#">BSPDX-23-W</a>
BSP-24	<a href="#">BSPX-24-W</a>



See our website: [www.AutomationDirect.com](http://www.AutomationDirect.com) for complete Engineering drawings

# bimed Protection Series Plastic Metric Thread Cable Glands

**Material**

- Body: PA 6 (Polyamide 6)
- Cap: PA 6 ( Polyamide 6)
- Seal: CR (Chloroprene Rubber)
- Locknut: PA 6 (Polyamide 6), 30% glass fiber reinforced

**Flammability**

- V2 (According to UL 94)

**Protection Class**

- IP68 - 5 Bar [72.5 psi]

**Operating Temperature**

- Permanent: -20 to +100°C [-4 to +212°F]
- Intermittent: -30 to +150°C [-22 to +302°F]

**Attachment Thread**

- EN 60423

**Body**

- Manufactured according to the requirements of EN 50262

**Approvals**

- UL Recognized or Listed File # E199260 \*
- CSA File # 190896
- CE



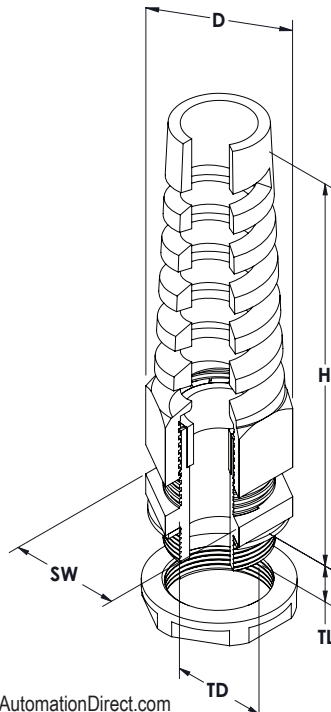
**\*Note: To obtain the most current agency approval information, see the Agency Compliance & Certifications Checklist section on the specific part number's web page.**



Cable Protection Series Plastic Metric Thread Strain Relief Cable Glands													
Light Gray	Price	Black	Price	Qty	Thread Size	Clamping Range mm [in]	Recommended Tightening Torque		Dimensions mm [in]				
							N-m [lb-ft]	Tolerance	SW	TL	H	D	TD
<a href="#"><u>BMSPX-1S-W</u></a>	\$5.00	<a href="#"><u>BMSPX-2S-W</u></a>	\$5.00	5	M12 x 1.5 mm	3.0 - 6.5 [0.12 - 0.26]	2.0 [1.48]	±0.5 [±0.37]	15.0 [0.59]	8.0 [0.31]	56.0 [2.20]	17.1 [0.67]	12.0 [0.47]
<a href="#"><u>BMSPX-11-W</u></a>	\$5.50	<a href="#"><u>BMSPX-21-W</u></a>	\$5.50	5	M16 x 1.5 mm	5.0 - 10.0 [0.20 - 0.39]	2.5 [1.84]	±0.5 [±0.37]	22.0 [0.87]	10.0 [0.39]	81.5 [3.21]	25.0 [0.98]	16.0 [0.63]
<a href="#"><u>BMSPX-13-W</u></a>	\$10.00	<a href="#"><u>BMSPX-23-W</u></a>	\$10.00	5	M20 x 1.5 mm	10.0 - 14.0 [0.39 - 0.55]	5.5 [4.06]	±0.5 [±0.37]	27.0 [1.06]	10.0 [0.39]	106.5 [4.19]	30.8 [1.21]	20.0 [0.79]
<a href="#"><u>BMSPX-15-W</u></a>	\$13.50	<a href="#"><u>BMSPX-25-W</u></a>	\$13.00	5	M25 x 1.5 mm	13.0 - 18.0 [0.51 - 0.71]	8.0 [5.90]	±0.5 [±0.37]	33.0 [1.30]	10.0 [0.39]	117.0 [4.61]	37.8 [1.49]	25.0 [0.98]

Note: Hex nut and washer included.

UL Part # Cross Reference	
UL Part Number	ADC Part Number
BMSP-1S	<a href="#"><u>BMSPX-1S-W</u></a>
BMSP-11	<a href="#"><u>BMSPX-11-W</u></a>
BMSP-13	<a href="#"><u>BMSPX-13-W</u></a>
BMSP-15	<a href="#"><u>BMSPX-15-W</u></a>
BMSP-2S	<a href="#"><u>BMSPX-2S-W</u></a>
BMSP-21	<a href="#"><u>BMSPX-21-W</u></a>
BMSP-23	<a href="#"><u>BMSPX-23-W</u></a>
BMSP-25	<a href="#"><u>BMSPX-25-W</u></a>



See our website: [www.AutomationDirect.com](http://www.AutomationDirect.com) for complete Engineering drawings

# bimed Protection Series Plastic PG Thread Cable Glands

**Material**

- Body: PA 6 (Polyamide 6)
- Cap: PA 6 ( Polyamide 6)
- Seal: CR (Chloroprene Rubber)
- Locknut: PA 6 (Polyamide 6), 30% glass fiber reinforced

**Flammability**

- V2 (According to UL 94)

**Protection Class**

- IP68 - 5 Bar [72.5 psi]

**Operating Temperature**

- Permanent: -20 to +100°C [-4 to +212°F]
- Intermittent: -30 to +150°C [-22 to +302°F]

**Attachment Thread**

- EN 60423

**Body**

- Manufactured according to the requirements of EN 50262

**Approvals**

- UL Recognized or Listed File # E199260 \*
- CSA File # 190896
- CE



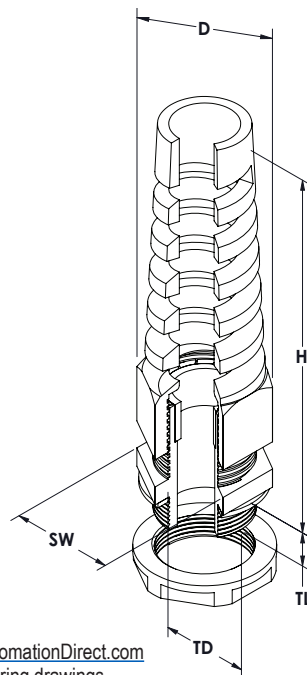
**\*Note: To obtain the most current agency approval information, see the Agency Compliance & Certifications Checklist section on the specific part number's web page.**



Cable Protection Series Plastic PG Thread Strain Relief Cable Glands													
Light Gray	Price	Black	Price	Qty	Thread Size	Clamping Range mm [in]	Recommended Tightening Torque		Dimensions mm [in]				
							N-m [lb-ft]	Tolerance	SW	TL	H	D	TD
<a href="#">BSSPX-11-W</a>	\$3.75	<a href="#">BSSPX-21-W</a>	\$3.75	5	PG7	3.0 - 6.5 [0.12 - 0.26]	2.0 [1.48]	±0.5 [±0.37]	15.0 [0.59]	8.0 [0.31]	56.0 [2.20]	12.4 [0.49]	12.4 [0.49]
<a href="#">BSSPX-12-W</a>	\$4.25	<a href="#">BSSPX-22-W</a>	\$4.25	5	PG9	4.0 - 8.0 [0.16 - 0.31]	2.5 [1.84]	±0.5 [±0.37]	19.0 [0.75]	8.0 [0.31]	69.0 [2.72]	15.1 [0.59]	15.1 [0.59]
<a href="#">BSSPX-13-W</a>	\$5.00	<a href="#">BSSPX-23-W</a>	\$4.75	5	PG11	5.0 - 10.0 [0.20 - 0.39]	2.5 [1.84]	±0.5 [±0.37]	22.0 [0.87]	8.0 [0.31]	82.5 [3.25]	18.5 [0.73]	18.5 [0.73]
<a href="#">BSSPX-14-W</a>	\$5.50	<a href="#">BSSPX-24-W</a>	\$5.50	5	PG13.5	6.0 - 12.0 [0.24 - 0.47]	5.0 [3.69]	±0.5 [±0.37]	24.0 [0.94]	9.0 [0.35]	94.0 [3.70]	27.8 [1.09]	20.3 [0.80]
<a href="#">BSSPX-15-W</a>	\$9.25	<a href="#">BSSPX-25-W</a>	\$9.00	5	PG16	10.0 - 14.0 [0.39 - 0.55]	5.5 [4.06]	±0.5 [±0.37]	27.0 [1.06]	10.0 [0.39]	106.0 [4.17]	31.1 [1.22]	22.5 [0.89]
<a href="#">BSSPX-16-W</a>	\$12.00	<a href="#">BSSPX-26-W</a>	\$12.00	5	PG21	13.0 - 18.0 [0.51 - 0.71]	5.5 [4.06]	±0.5 [±0.37]	33.0 [1.30]	11.0 [0.43]	117.0 [4.61]	37.8 [1.49]	28.1 [1.11]

Note: Hex nut and washer included.

UL Part # Cross Reference	
UL Part Number	ADC Part Number
BSSP-11	<a href="#">BSSPX-11-W</a>
BSSP-12	<a href="#">BSSPX-12-W</a>
BSSP-13	<a href="#">BSSPX-13-W</a>
BSSP-14	<a href="#">BSSPX-14-W</a>
BSSP-15	<a href="#">BSSPX-15-W</a>
BSSP-16	<a href="#">BSSPX-16-W</a>
BSSP-21	<a href="#">BSSPX-11-W</a>
BSSP-22	<a href="#">BSSPX-12-W</a>
BSSP-23	<a href="#">BSSPX-13-W</a>
BSSP-24	<a href="#">BSSPX-14-W</a>
BSSP-25	<a href="#">BSSPX-15-W</a>
BSSP-26	<a href="#">BSSPX-16-W</a>



See our website: [www.AutomationDirect.com](http://www.AutomationDirect.com) for complete Engineering drawings

# bimed Protection Series Plastic NPT Thread Cable Glands

**Material**

- Body: PA 6 (Polyamide 6)
- Cap: PA 6 ( Polyamide 6)
- Seal: CR (Chloroprene Rubber)
- Locknut: PA 6 (Polyamide 6), 30% glass fiber reinforced

**Flammability**

- V2 (According to UL 94)

**Protection Class**

- IP68 - 5 Bar [72.5 psi]

**Operating Temperature**

- Permanent: -20 to +100°C [-4 to +212°F]
- Intermittent: -30 to +150°C [-22 to +302°F]

**Attachment Thread**

- ANSI B 1.20.1

**Body**

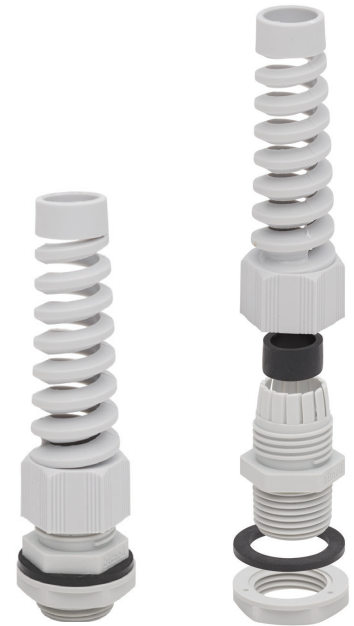
- Manufactured according to the requirements of EN 50262

**Approvals**

- Recognized or Listed File # E199260 \*
- CSA File # 190896
- CE



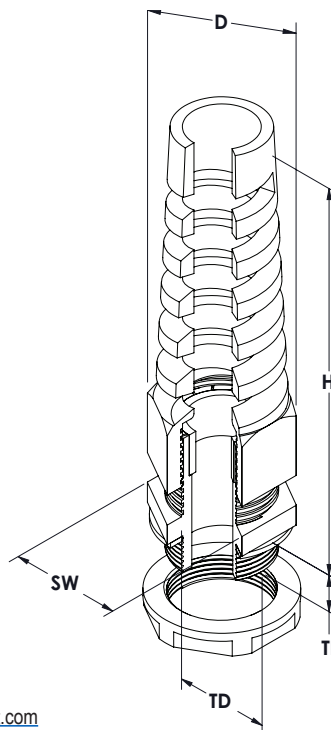
\*Note: To obtain the most current agency approval information, see the Agency Compliance & Certifications Checklist section on the specific part number's web page.



Cable Protection Series Plastic NPT Thread Cable Glands													
Light Gray	Price	Black	Price	Qty	Thread Size	Clamping Range mm [in]	Recommended Tightening Torque		Dimensions mm [in]				
							N-m [lb-ft]	Tolerance	SW	TL	H	D	TD
<a href="#">BNSPAX-11-W</a>	\$6.25	<a href="#">BNSPAX-21-W</a>	\$6.25	5	NPT 3/8"	5.0 - 10.0 [0.20 - 0.39]	2.5 [1.84]	±0.5 [±0.37]	22.0 [0.87]	15.0 [0.59]	80.4 [3.17]	25.3 [1.00]	17.1 [0.67]
<a href="#">BNSPBX-12-W</a>	\$9.25	<a href="#">BNSPBX-22-W</a>	\$9.25	5	NPT 1/2"	6.0 - 12.0 [0.24 - 0.47]	4.0 [2.95]	±0.5 [±0.37]	24.0 [0.94]	15.0 [0.59]	94.7 [3.73]	27.6 [1.09]	21.3 [0.84]
<a href="#">BNSPDX-13-W</a>	\$13.50	<a href="#">BNSPDX-23-W</a>	\$13.50	5	NPT 3/4"	13.0 - 18.0 [0.51 - 0.71]	5.5 [4.06]	±0.5 [±0.37]	33.0 [1.30]	15.0 [0.59]	117.4 [4.62]	37.8 [1.49]	26.1 [1.03]

Note: Hex nut and washer included.

UL Part # Cross Reference	
UL Part Number	ADC Part Number
BNSPA-11	<a href="#">BNSPAX-11-W</a>
BNSPB-12	<a href="#">BNSPBX-12-W</a>
BNSPD-13	<a href="#">BNSPDX-13-W</a>
BNSPA-21	<a href="#">BNSPAX-21-W</a>
BNSPB-22	<a href="#">BNSPBX-22-W</a>
BNSPD-23	<a href="#">BNSPDX-23-W</a>



See our website: [www.AutomationDirect.com](http://www.AutomationDirect.com) for complete Engineering drawings

# bimed Brass Metric Thread Cable Glands

## Material

- Body: Brass nickel-plated
- Cap: Brass nickel-plated
- Seal: CR (Chloroprene Rubber)
- Clamp insert: PA 6 (Polyamide 6)
- O-ring: NBR

## Flammability

- V2 (According to UL 94)

## Protection Class

- IP68 - 5 Bar (72.5 psi)

## Operating Temperature

- Permanent: -20 to +100°C [-4 to +212°F]
- Intermittent: -40 to +150°C [-40 to +302°F]

## Attachment Thread

- EN 60423

## Body

- Manufactured according to the requirements of EN 50262

## Approvals

- UL Recognized or Listed File # E199260 \*
- CSA File # 190896
- CE



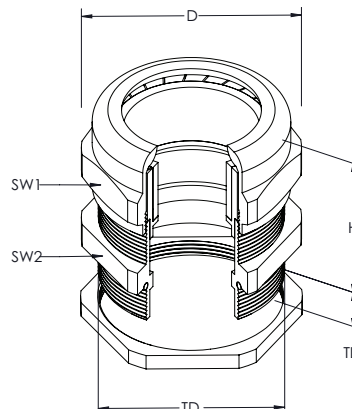
\*Note: To obtain the most current agency approval information, see the Agency Compliance & Certifications Checklist section on the specific part number's web page.



Brass Metric Thread Cable Glands												
Part Number	Price	Qty	Thread Size	Clamping Range mm [in]	Recommended Tightening Torque		Dimensions mm [in]					
					N-m [lb-ft]	Tolerance	SW1	SW2	TL	H	D	TD
<a href="#">BMBCX-ES</a>	\$12.00	5	M12 x 1.5 mm	3.0 - 6.5 [0.12 - 0.26]	5.0 [3.69]	±0.5 [±0.37]	14.0 [0.55]	14.0 [0.55]	6.0 [0.24]	21.5 [0.85]	15.5 [0.61]	12.0 [0.47]
<a href="#">BMBCX-E1</a>	\$15.00	5	M16 x 1.5 mm	5.0 - 10.0 [0.20 - 0.39]	9.0 [6.64]	±0.5 [±0.37]	17.0 [0.67]	18.0 [0.71]	7.0 [0.28]	23.0 [0.91]	18.9 [0.74]	16.0 [0.63]
<a href="#">BMBCX-E2</a>	\$21.00	5	M20 x 1.5 mm	6.0 - 12.0 [0.24 - 0.47]	11.0 [8.11]	±1.0 [±0.74]	22.0 [0.87]	22.0 [0.87]	8.0 [0.31]	25.0 [0.98]	26.8 [1.06]	20.0 [0.79]
<a href="#">BMBCX-E3</a>	\$24.00	5	M25 x 1.5 mm	11.0 - 17.0 [0.43 - 0.67]	14.0 [10.33]	±1.0 [±0.74]	24.0 [0.94]	27.0 [1.06]	8.0 [0.31]	28.0 [1.10]	26.8 [1.06]	25.0 [0.98]
<a href="#">BMBCX-E4</a>	\$39.50	5	M32 x 1.5 mm	15.0 - 21.0 [0.59 - 0.86]	15.0 [11.06]	±1.0 [±0.74]	30.0 [1.18]	34.0 [1.34]	9.0 [0.35]	33.0 [1.30]	37.5 [1.48]	32.0 [1.26]
<a href="#">BMBCX-E5</a>	\$26.00	2	M40 x 1.5 mm	19.0 - 28.0 [0.74 - 1.10]	17.0 [12.54]	±1.0 [±0.74]	40.0 [1.57]	43.0 [1.69]	9.0 [0.35]	38.0 [1.50]	48.5 [1.91]	40.0 [1.57]
<a href="#">BMBCX-E6</a>	\$47.00	2	M50 x 1.5 mm	27.0 - 38.0 [1.06 - 1.50]	30.0 [22.13]	±1.5 [±1.11]	50.0 [1.97]	55.0 [2.17]	9.0 [0.35]	48.0 [1.89]	61.0 [2.40]	50.0 [1.97]
<a href="#">BMBCX-E7</a>	\$87.00	2	M63 x 1.5 mm	34.0 - 44.0 [1.34 - 1.73]	55.0 [40.57]	±2.0 [±1.48]	64.0 [2.52]	68.0 [2.68]	14.0 [0.55]	54.0 [2.13]	75.0 [2.95]	63.0 [2.48]

Note: Hex nut and washer included.

UL Part # Cross Reference	
UL Part Number	ADC Part Number
BMBC-ES	<a href="#">BMBCX-ES</a>
BMBC-E1	<a href="#">BMBCX-E1</a>
BMBC-E2	<a href="#">BMBCX-E2</a>
BMBC-E3	<a href="#">BMBCX-E3</a>
BMBC-E4	<a href="#">BMBCX-E4</a>
BMBC-E5	<a href="#">BMBCX-E5</a>
BMBC-E6	<a href="#">BMBCX-E6</a>
BMBC-E7	<a href="#">BMBCX-E7</a>



See our website: [www.AutomationDirect.com](http://www.AutomationDirect.com)  
for complete Engineering drawings



# bimed Brass PG Thread Cable Glands

**Material**

- Body: Brass nickel-plated
- Cap: Brass nickel-plated
- Seal: CR (Chloroprene Rubber)
- Clamp insert: PA 6 (Polyamide 6)
- O-ring: NBR

**Flammability**

- V2 (According to UL 94)

**Protection Class**

- IP68 - 5 Bar (72.5 psi)

**Operating Temperature**

- Permanent: -20 to +100°C [-4 to +212°F]
- Intermittent: -40 to +150°C [-40 to +302°F]

**Attachment Thread**

- DIN 40430

**Body**

- Manufactured according to the requirements of EN 50262

**Approvals**

- UL Recognized or Listed File # E199260 \*
- CSA File # 190896
- CE



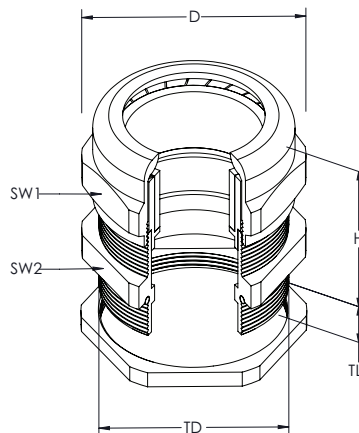
\*Note: To obtain the most current agency approval information, see the Agency Compliance & Certifications Checklist section on the specific part number's web page.



Brass PG Thread Cable Glands												
Part Number	Price	Qty	Thread Size	Clamping Range mm [in]	Recommended Tightening Torque		Dimensions mm [in]					
					N·m [lb·ft]	Tolerance	SW1	SW2	TL	H	D	TD
<a href="#">BSBCX-01</a>	\$12.00	5	PG7	3.0 - 6.5 [0.12 - 0.26]	5.0 [3.69]	±0.5 [±0.37]	14.0 [0.55]	14.0 [0.55]	6.0 [0.24]	22.0 [0.87]	15.5 [0.61]	12.5 [0.49]
<a href="#">BSBCX-02</a>	\$13.00	5	PG9	4.0 - 8.0 [0.16 - 0.31]	5.5 [4.06]	±0.5 [±0.37]	17.0 [0.67]	17.0 [0.67]	6.0 [0.24]	23.5 [0.93]	18.9 [0.74]	15.2 [0.60]
<a href="#">BSBCX-03</a>	\$16.00	5	PG11	5.0 - 10.0 [0.20 - 0.39]	7.0 [5.16]	±0.5 [±0.37]	20.0 [0.79]	20.0 [0.79]	6.0 [0.24]	26.0 [1.02]	22.0 [0.87]	18.6 [0.73]
<a href="#">BSBCX-04</a>	\$18.50	5	PG13.5	6.0 - 12.0 [0.24 - 0.47]	8.0 [5.90]	±1.0 [±0.74]	22.0 [0.87]	22.0 [0.87]	6.5 [0.26]	24.5 [0.96]	24.5 [0.96]	20.4 [0.80]
<a href="#">BSBCX-05</a>	\$21.00	5	PG16	10.0 - 14.0 [0.39 - 0.55]	11.0 [8.11]	±1.0 [±0.74]	24.0 [0.94]	24.0 [0.94]	6.5 [0.26]	28.0 [1.10]	26.8 [1.06]	22.5 [0.89]
<a href="#">BSBCX-06</a>	\$33.00	5	PG21	13.0 - 18.0 [0.51 - 0.71]	17.0 [12.54]	±1.0 [±0.74]	30.0 [1.18]	30.0 [1.18]	7.2 [0.28]	32.5 [1.28]	33.0 [1.30]	28.3 [1.11]
<a href="#">BSBCX-07</a>	\$54.00	5	PG29	18.0 - 25.0 [0.71 - 0.98]	22.0 [16.23]	±1.0 [±0.74]	40.0 [1.57]	40.0 [1.57]	8.0 [0.31]	38.5 [1.52]	44.5 [1.75]	37.0 [1.46]
<a href="#">BSBCX-08</a>	\$39.50	2	PG36	22.0 - 32.0 [0.87 - 1.26]	40.0 [29.50]	±1.5 [±1.11]	50.0 [1.97]	50.0 [1.97]	9.0 [0.35]	48.0 [1.89]	55.5 [2.19]	47.0 [1.85]
<a href="#">BSBCX-09</a>	\$64.00	1	PG42	30.0 - 38.0 [1.18 - 1.50]	45.0 [33.19]	±2.0 [±1.48]	58.0 [2.28]	58.0 [2.28]	12.0 [0.47]	48.5 [1.91]	64.0 [2.51]	54.0 [2.13]
<a href="#">BSBCX-10</a>	\$84.00	1	PG48	34.0 - 44.0 [1.34 - 1.73]	50.0 [36.88]	±2.0 [±1.48]	64.0 [2.52]	64.0 [2.52]	14.0 [0.55]	53.0 [2.09]	70.0 [2.76]	59.3 [2.33]

Note: Hex nut and washer included.

UL Part # Cross Reference	
UL Part Number	ADC Part Number
BSBC-01	<a href="#">BSBCX-01</a>
BSBC-02	<a href="#">BSBCX-02</a>
BSBC-03	<a href="#">BSBCX-03</a>
BSBC-04	<a href="#">BSBCX-04</a>
BSBC-05	<a href="#">BSBCX-05</a>
BSBC-06	<a href="#">BSBCX-06</a>
BSBC-07	<a href="#">BSBCX-07</a>
BSBC-08	<a href="#">BSBCX-08</a>
BSBC-09	<a href="#">BSBCX-09</a>
BSBC-10	<a href="#">BSBCX-10</a>



See our website: [www.AutomationDirect.com](http://www.AutomationDirect.com) for complete Engineering drawings

# bimed Brass NPT Thread Cable Glands

**Material**

- Body: Brass nickel-plated
- Cap: Brass nickel-plated
- Seal: CR (Chloroprene Rubber)
- Clamp insert: PA 6 (Polyamide 6)
- O-ring: NBR

**Flammability**

- V2 (According to UL 94)

**Protection Class**

- IP68 - 5 Bar [72.5 psi]

**Operating Temperature**

- Permanent: -20 to +100°C [-4 to +212°F]
- Intermittent: -40 to +150°C [-40 to +302°F]

**Attachment Thread**

- ANSI B 1.20.1

**Body**

- Manufactured according to the requirements of EN 50262

**Approvals**

- UL Recognized or Listed File # E199260 \*
- CSA File # 190896
- CE



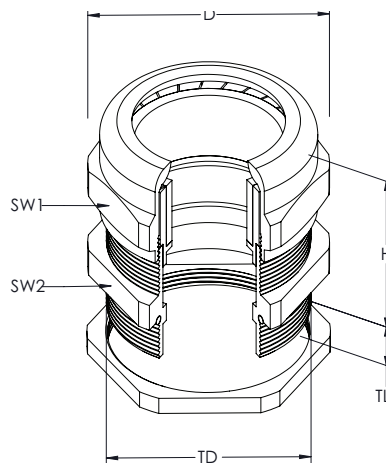
**\*Note: To obtain the most current agency approval information, see the Agency Compliance & Certifications Checklist section on the specific part number's web page.**



Brass NPT Thread Cable Glands												
Part Number	Price	Qty	Thread Size	Clamping Range mm [in]	Recommended Tightening Torque		Dimensions mm [in]					
					N·m [lb·ft]	Tolerance	SW1	SW2	TL	H	D	TD
<b><u>BNBCX-01</u></b>	\$23.00	5	NPT 3/8"	4.0 - 8.0 [0.16 - 0.31]	6.5 [4.79]	±0.5 [±0.37]	17.0 [0.67]	19.0 [0.75]	11.5 [0.45]	23.0 [0.91]	21.0 [0.83]	16.8 [0.66]
<b><u>BNBCX-02</u></b>	\$28.00	5	NPT 1/2"	6.0 - 12.0 [0.24 - 0.47]	17.5 [12.91]	±0.5 [±0.37]	22.0 [0.87]	22.0 [0.87]	13.0 [0.51]	25.5 [1.00]	24.5 [0.96]	20.9 [0.82]
<b><u>BNBCX-03</u></b>	\$46.50	5	NPT 3/4"	13.0 - 18.0 [0.51 - 0.71]	18.0 [13.28]	±0.5 [±0.37]	30.0 [1.18]	30.0 [1.18]	13.0 [0.51]	35.5 [1.40]	33.0 [1.30]	26.2 [1.03]
<b><u>BNBCX-04</u></b>	\$96.00	5	NPT 1"	18.0 - 25.0 [0.71 - 0.98]	40.0 [29.50]	±1.0 [±0.74]	40.0 [1.57]	40.0 [1.57]	13.0 [0.51]	43.0 [1.69]	44.5 [1.75]	32.8 [1.29]

Note: Hex nut and washer included.

UL Part # Cross Reference	
UL Part Number	ADC Part Number
BNBC-01	<b><u>BNBCX-01</u></b>
BNBC-02	<b><u>BNBCX-02</u></b>
BNBC-03	<b><u>BNBCX-03</u></b>
BNBC-04	<b><u>BNBCX-04</u></b>



See our website: [www.AutomationDirect.com](http://www.AutomationDirect.com) for complete Engineering drawings

# bimed EMC Cable Glands - Metric Thread

## Overview

### EMC Cable Glands – Metric Thread

EMC Cable Glands are used in applications to maintain shielding for electromagnetic protection. These glands maintain the shielding integrity from the shielded cable to the enclosure simply by tightening the gland. Long lasting contact is achieved using a high-definition spring that is designed to move to prevent damage to the sheath. For easy cable installation this spring allows for clearance while the cable is installed and clamps to the cable once the gland is tightened. Metric EMC glands can accept cable diameters between 0.118 to 2.087 inches (3 to 53mm).

## Features

### Material

- Body: Brass nickel-plated
- Cap: Brass nickel-plated
- Seal: CR (Chloroprene Rubber)
- Clamp insert: PA 6 (Polyamide 6)
- Contact Spring: Special Copper Alloy
- O-ring: NBR

### Flammability

- V2 (According to UL 94)

### Protection Class

- IP68 - 5 Bar [72.5 psi]

### Operating Temperature

- Permanent: -20 to +100°C [-4 to +212°F]
- Intermittent: -40 to +150°C [-40 to +302°F]

### Attachment Thread

- DIN 40430

### Body

- Manufactured according to the requirements of EN 50262

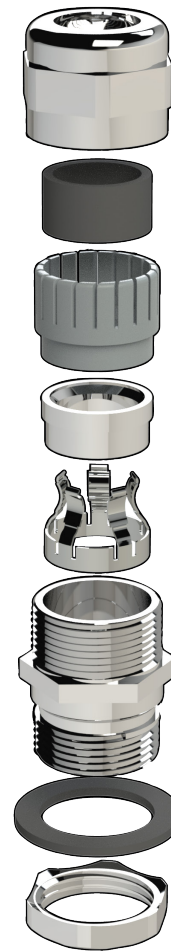
## Agency Approvals

### Approvals

- UL Recognized or Listed File # E199260 \*
- CE



**\*Note: To obtain the most current agency approval information, see the Agency Compliance & Certifications Checklist section on the specific part number's web page.**



Cable Glands								
Part Number	Price	Qty	Thread Size	Clamping Range mm [in]	Shield Diameter mm [in]	Tightening Torque		Drawing Link
						Cap to Body	Body to Enclosure (or Locknut to Body)	
						N-m [lb-ft]	N-m [lb-ft]	
<a href="#">BMEM-ES-M12T-WCL</a>	\$22.75	5	M12 x 1.5 mm	3.0 to 6.5 [0.12 to 0.26]	2.0 to 5.0 [0.08 to 0.20]	5 ± 0.5 [3.69 ± 0.4]	5 ± 0.5 [3.69 ± 0.4]	<a href="#">PDF</a>
<a href="#">BMEM-E1-M16T-WCL</a>	\$27.00	5	M16 x 1.5 mm	5.0 to 10.0 [0.20 to 0.40]	3.5 to 8.0 [0.14 to 0.31]	6 ± 0.5 [4.43 ± 0.4]	6 ± 0.5 [4.43 ± 0.4]	<a href="#">PDF</a>
<a href="#">BMEM-E2S-M20T-WCL</a>	\$32.25	5	M20 x 1.5 mm	6.0 to 12.0 [0.24 to 0.47]	4.5 to 10.0 [0.18 to 0.39]	6 ± 0.5 [4.43 ± 0.4]	6 ± 0.5 [4.43 ± 0.4]	<a href="#">PDF</a>
<a href="#">BMEM-E2-M20T-WCL</a>	\$30.25	5	M20 x 1.5 mm	7.5 to 14.0 [0.30 to 0.55]	5.5 to 11.5 [0.22 to 0.45]	10 ± 0.5 [7.38 ± 0.4]	6 ± 0.5 [4.43 ± 0.4]	<a href="#">PDF</a>
<a href="#">BMEM-E3-M25T-WCL</a>	\$54.50	5	M25 x 1.5 mm	10.0 to 18.0 [0.39 to 0.71]	7.0 to 14.0 [0.28 to 0.55]	15 ± 0.5 [11.07 ± 0.4]	6 ± 0.5 [4.43 ± 0.4]	<a href="#">PDF</a>
<a href="#">BMEM-E4-M32T-WCL</a>	\$86.50	5	M32 x 1.5 mm	16.0 to 25.0 [0.63 to 0.98]	12.0 to 20.0 [0.47 to 0.79]	22 ± 1.0 [16.24 ± 0.7]	6 ± 0.5 [4.43 ± 0.4]	<a href="#">PDF</a>
<a href="#">BMEM-E5-M40T-WCL</a>	\$67.75	2	M40 x 1.5 mm	22.0 to 32.0 [0.87 to 1.26]	18.0 to 27.0 [0.71 to 1.06]	42 ± 1.0 [31 ± 0.7]	12 ± 0.5 [8.86 ± 0.4]	<a href="#">PDF</a>
<a href="#">BMEM-E6-M50T-WCL</a>	\$97.00	2	M50 x 1.5 mm	30.0 to 38.0 [1.18 to 1.5]	26.0 to 34.0 [1.02 to 1.34]	42 ± 1.0 [31 ± 0.7]	18 ± 0.5 [13.28 ± 0.4]	<a href="#">PDF</a>
<a href="#">BMEM-E7-M63T-WCL</a>	\$112.50	2	M63 x 1.5 mm	34.0 to 44.0 [1.34 to 1.73]	30.0 to 40.0 [1.18 to 1.57]	43 ± 1.0 [31.73 ± 0.7]	25 ± 1.0 [18.45 ± 0.7]	<a href="#">PDF</a>
<a href="#">BMEM-E7L-M63T-WCL</a>	\$153.25	2	M63 x 1.5 mm	37.0 to 53.0 [1.46 to 2.09]	33.0 to 49.0 [1.30 to 1.93]	100 ± 2.0 [73.8 ± 1.5]	25 ± 1.0 [18.45 ± 0.7]	<a href="#">PDF</a>

Note: Hex nut and washer included.

# bimed EMC Cable Glands - PG Thread

## Overview

### EMC Cable Glands – PG Thread

EMC Cable Glands are used in applications to maintain shielding for electromagnetic protection. These glands maintain the shielding integrity from the shielded cable to the enclosure simply by tightening the gland. Long lasting contact is achieved using a high-definition spring that is designed to move to prevent damage to the sheath. For easy cable installation this spring allows for clearance while the cable is installed and clamps to the cable once the gland is tightened. PG EMC glands can accept cable diameters between 0.118 to 1.732 inches (3 to 44mm).

## Features

### Material

- Body: Brass nickel-plated
- Cap: Brass nickel-plated
- Seal: CR (Chloroprene Rubber)
- Clamp insert: PA 6 (Polyamide 6)
- Contact Spring: Special Copper Alloy
- O-ring: NBR

### Protection Class

- IP68 - 5 Bar (72.5 psi)

### Operating Temperature

- Permanent: -20 to +100°C [-4 to +212°F]
- Intermittent: -40 to +150°C [-40 to +302°F]

### Attachment Thread

- DIN 40430

### Body

- Manufactured according to the requirements of EN 50262

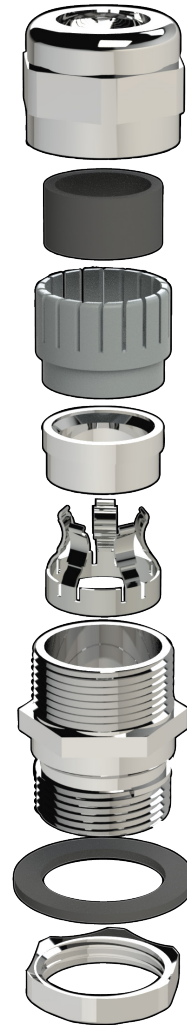
## Agency Approvals

### Approvals

- CE



**\*Note: To obtain the most current agency approval information, see the Agency Compliance & Certifications Checklist section on the specific part number's web page.**



Cable Glands								
Part Number	Price	Qty	Thread Size	Clamping Range mm [in]	Shield Diameter mm [in]	Tightening Torque		Drawing Link
						Cap to Body	Body to Enclosure (or Locknut to Body)	
						N-m [lb-ft]	N-m [lb-ft]	
<a href="#">BSEM-E2-PG9T-WCL</a>	\$38.75	5	PG9	4.0 - 8.0 [0.16 - 0.31]	2.5 - 6.0 [0.1 - 0.24]	6 ± 0.5 [4.43 ± 0.37]	4 ± 0.5 [2.95 ± 0.37]	<a href="#">PDF</a>
<a href="#">BSEM-E3-PG11T-WCL</a>	\$40.00	5	PG11	5.0 - 10.0 [0.2 - 0.39]	3.5 - 8.0 [0.14 - 0.31]	6 ± 0.5 [4.43 ± 0.37]	5.5 ± 0.5 [4.06 ± 0.37]	<a href="#">PDF</a>
<a href="#">BSEM-E4-PG13T-WCL</a>	\$41.50	5	PG13.5	6.0 - 12.0 [0.24 - 0.47]	4.5 - 10.0 [0.18 - 0.39]	6 ± 0.5 [4.43 ± 0.37]	5.5 ± 0.5 [4.06 ± 0.37]	<a href="#">PDF</a>
<a href="#">BSEM-E5-PG16T-WCL</a>	\$46.25	5	PG16	7.5 - 14.0 [0.3 - 0.55]	5.5 - 11.5 [0.22 - 0.45]	10 ± 0.5 [7.38 ± 0.37]	6 ± 0.5 [4.43 ± 0.37]	<a href="#">PDF</a>
<a href="#">BSEM-E6-PG21T-WCL</a>	\$60.25	5	PG21	10.0 - 18.0 [0.39 - 0.71]	7.0 - 14.0 [0.28 - 0.55]	15 ± 0.5 [11.07 ± 0.37]	6 ± 0.5 [4.43 ± 0.37]	<a href="#">PDF</a>
<a href="#">BSEM-E7-PG29T-WCL</a>	\$119.25	5	PG29	16.0 - 25.0 [0.63 - 0.98]	12.0 - 20.0 [0.47 - 0.79]	22 ± 0.5 [16.24 ± 0.37]	12 ± 0.5 [8.86 ± 0.37]	<a href="#">PDF</a>
<a href="#">BSEM-E8-PG36T-WCL</a>	\$68.50	2	PG36	22.0 - 32.0 [0.87 - 1.26]	18.0 - 27.0 [0.71 - 1.06]	42 ± 1 [312 ± 0.74]	18 ± 0.5 [13.28 ± 0.37]	<a href="#">PDF</a>
<a href="#">BSEM-E9-PG42T-WCL</a>	\$58.25	1	PG42	30.0 - 38.0 [1.18 - 1.5]	26.0 - 34.0 [1.02 - 1.34]	42 ± 1 [312 ± 0.74]	20 ± 0.5 [14.76 ± 0.37]	<a href="#">PDF</a>
<a href="#">BSEM-E10-PG48T-WCL</a>	\$71.25	1	PG48	34.0 - 44.0 [1.34 - 1.73]	30.0 - 40.0 [1.18 - 1.57]	43 ± 1 [317.3 ± 0.74]	25 ± 1 [18.45 ± 0.74]	<a href="#">PDF</a>

Note: Hex nut and washer included.

# bimed EMC Cable Glands - NPT Thread

## Overview

### EMC Cable Glands – NPT Thread

EMC Cable Glands are used in applications to maintain shielding for electromagnetic protection. These glands maintain the shielding integrity from the shielded cable to the enclosure simply by tightening the gland. Long lasting contact is achieved using a high-definition spring that is designed to move to prevent damage to the sheath. For easy cable installation this spring allows for clearance while the cable is installed and clamps to the cable once the gland is tightened. NPT EMC glands can accept cable diameters between 1/4 to 2 inches [3 to 44mm].

## Features

### Material

- Body: Brass nickel-plated
- Cap: Brass nickel-plated
- Seal: CR (Chloroprene Rubber)
- Clamp insert: PA 6 (Polyamide 6)
- Contact Spring: Special Copper Alloy
- O-ring: NBR

### Flammability

- V2 (According to UL 94)

### Protection Class

- IP68 - 5 Bar (72.5 psi)

### Operating Temperature

- Permanent: -20 to +100°C [-4 to +212°F]
- Intermittent: -40 to +150°C [-40 to +302°F]

### Attachment Thread

- ANSI B1.20.1

### Body

- Manufactured according to the requirements of EN 50262

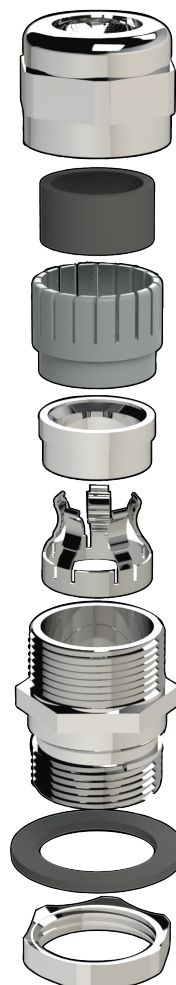
## Agency Approvals

### Approvals

- UL Recognized or Listed File # E199260 \*
- CE



**\*Note: To obtain the most current agency approval information, see the Agency Compliance & Certifications Checklist section on the specific part number's web page.**



Cable Glands								
Part Number	Price	Qty	Thread Size	Clamping Range mm [in]	Shield Diameter mm [in]	Tightening Torque		Drawing Link
						Cap to Body	Body to Enclosure (or Locknut to Body)	
						N-m [lb-ft]	N-m [lb-ft]	
<a href="#">BNEM-E1-3-8T-WCL</a>	\$50.00	5	3/8in NPT	5.0 - 10.0 [0.2 - 0.39]	3.5 - 8.0 [0.14 - 0.31]	6 ± 0.5 [4.43 ± 0.37]	3 ± 0.5 [2.21 ± 0.37]	<a href="#">PDF</a>
<a href="#">BNEM-E2S-1-2T-WCL</a>	\$53.75	5	1/2in NPT	6.0 - 12.0 [0.24 - 0.47]	4.5 - 10.0 [0.18 - 0.39]	6 ± 0.5 [4.43 ± 0.37]	3 ± 0.5 [2.21 ± 0.37]	<a href="#">PDF</a>
<a href="#">BNEM-E2-1-2T-WCL</a>	\$55.00	5	1/2in NPT	7.5 - 14.0 [0.3 - 0.55]	5.5 - 11.5 [0.22 - 0.45]	10 ± 0.5 [7.38 ± 0.37]	4 ± 0.5 [2.95 ± 0.37]	<a href="#">PDF</a>
<a href="#">BNEM-E3-3-4T-WCL</a>	\$81.75	5	3/4in NPT	10.0 - 18.0 [0.39 - 0.71]	7.0 - 14.0 [0.28 - 0.55]	15 ± 0.5 [11.07 ± 0.37]	5.5 ± 0.5 [4.06 ± 0.37]	<a href="#">PDF</a>
<a href="#">BNEM-E4-1T-WCL</a>	\$139.75	5	1in NPT	16.0 - 25.0 [0.63 - 0.98]	12.0 - 20.0 [0.47 - 0.79]	22 ± 1 [16.24 ± 0.74]	8 ± 0.5 [5.92 ± 0.37]	<a href="#">PDF</a>
<a href="#">BNEM-E5-11-4T-WCL</a>	\$85.25	2	1-1/4in NPT	22.0 - 32.0 [0.87 - 1.26]	18.0 - 27.0 [0.71 - 1.06]	42 ± 1 [31 ± 0.74]	10 ± 0.5 [7.38 ± 0.37]	<a href="#">PDF</a>
<a href="#">BNEM-E6-11-2T-WCL</a>	\$63.50	1	1-1/2in NPT	30.0 - 38.0 [1.18 - 1.5]	26.0 - 34.0 [1.02 - 1.34]	42 ± 1 [31 ± 0.74]	16 ± 0.5 [11.81 ± 0.37]	<a href="#">PDF</a>
<a href="#">BNEM-E7-2T-WCL</a>	\$84.00	1	2in NPT	34.0 - 44.0 [1.34 - 1.73]	30.0 - 40.0 [1.18 - 1.57]	43 ± 1 [31.73 ± 0.74]	18 ± 0.5 [13.28 ± 0.37]	<a href="#">PDF</a>

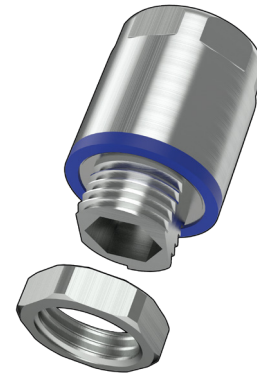
Note: Hex nut and washer included.

# bimed Hygienic Cable Glands - Standard

## Overview

### Hygienic Cable Glands - Standard

Hygienic Cable Glands can be used in applications in manufacturing and packaging of food and pharmaceuticals, cleanroom technology, biotechnology, chemical industry. These glands have a smooth finish with no threads exposed which prevents harmful microorganisms from sticking to the surface. The sealing material is in accordance with FDA guideline 21 CFR 177.2600. The design allows for easier, faster, and lower cost cleaning. Standard Hygienic cable glands come in NPT mounting sizes ¼ to ¾ inches or in Metric mounting sizes M12 to M25. These can accept cable sizes ¼ to 0.669 inches [3 to 17mm].



## Features

### Material

- Body: Stainless Steel 1.4305(AISI 303)
- Cap: Stainless Steel 1.4305(AISI 303)
- Locknut: Stainless Steel 1.4305(AISI 303)
- Seal: EPDM, according to FDA guideline 21 CFR 177.2600

### Protection Class

- IP66, IP69, IP68 - 5 Bar [72.5 psi]
- UL TYPE 1, 2, 4, 4X, 12, 12K, 13 according to UL 50E

### Operating Temperature

- Permanent: -20 to +100°C [-4 to +212°F]
- Intermittent: -40 to +150°C [-40 to +302°F]

### Attachment Thread

- Metric EN 60423
- NPT ANSI B1.20.1

### Body

- Manufactured according to the requirements of EN 50262

## Agency Approvals

### Approvals

- UL Recognized or Listed File # E199260 \*
- CE



\*Note: To obtain the most current agency approval information, see the Agency Compliance & Certifications Checklist section on the specific part number's web page.

Cable Glands									
Thread Type Metric according to EN 60423									
Part Number	Price	Qty	Thread Size	Clamping Range mm [in]	Allen Wrench Size	Allen Adapter	Tightening Torque		Drawing Link
							Cap to Body	Body to Enclosure (or Locknut to Body)	
							N-m [lb-ft]	N-m [lb-ft]	
<a href="#">BMHG1-0S-L</a>	\$23.25	1	M12 x 1.5mm	3.0 - 6.5 [0.12 - 0.26]	7	<a href="#">BMFGT-01</a>	2.5 ± 0.5 [1.85 ± 0.37]	2 ± 0.5 [1.48 ± 0.37]	<a href="#">PDF</a>
<a href="#">BMHG1-01-L</a>	\$26.25		M16 x 1.5mm	5.0 - 10.0 [0.20 - 0.39]	10	<a href="#">BMFGT-02</a>	4 ± 0.5 [2.95 ± 0.37]	3 ± 0.5 [2.21 ± 0.37]	<a href="#">PDF</a>
<a href="#">BMHG1-02-L</a>	\$32.50		M20 x 1.5mm	6.0 - 12.0 [0.24 - 0.47]	13	<a href="#">BMFGT-03</a>	5 ± 0.5 [3.69 ± 0.37]	2.5 ± 0.5 [1.85 ± 0.37]	<a href="#">PDF</a>
<a href="#">BMHG1-03-L</a>	\$40.75		M25 x 1.5mm	12.0 - 17.0 [0.24 - 0.67]	17	<a href="#">BMFGT-04</a>	6 ± 0.5 [4.43 ± 0.37]	4 ± 0.5 [2.95 ± 0.37]	<a href="#">PDF</a>

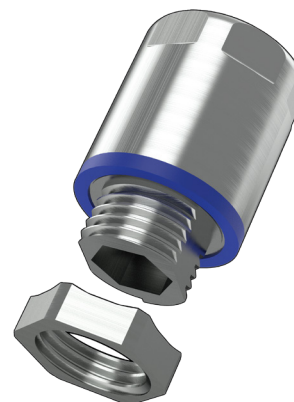
Cable Glands									
Thread Type NPT according to ANSI ASME B1.20.1									
Part Number	Price	Qty	Thread Size	Clamping Range mm [in]	Allen Wrench Size	Allen Adapter	Tightening Torque		Drawing Link
							Cap to Body	Body to Enclosure (or Locknut to Body)	
							N-m [lb-ft]	N-m [lb-ft]	
<a href="#">BNHG1-0S-L</a>	\$25.50	1	1/4in NPT	3.0 - 6.5 [0.12 - 0.26]	7	<a href="#">BMFGT-01</a>	2.5 ± 0.5 [1.85 ± 0.37]	3 ± 0.5 [2.21 ± 0.37]	<a href="#">PDF</a>
<a href="#">BNHG1-01-L</a>	\$28.25		3/8in NPT	5.0 - 10.0 [0.20 - 0.39]	10	<a href="#">BMFGT-02</a>	4 ± 0.5 [2.95 ± 0.37]	4 ± 0.5 [2.95 ± 0.37]	<a href="#">PDF</a>
<a href="#">BNHG1-02-L</a>	\$33.50		1/2in NPT	6.0 - 12.0 [0.24 - 0.47]	13	<a href="#">BMFGT-03</a>	5 ± 0.5 [3.69 ± 0.37]	5.5 ± 0.5 [4.06 ± 0.37]	<a href="#">PDF</a>
<a href="#">BNHG1-03-L</a>	\$53.00		3/4in NPT	12.0 - 17.0 [0.24 - 0.67]	17	<a href="#">BMFGT-04</a>	6 ± 0.5 [4.43 ± 0.37]	6 ± 0.5 [4.43 ± 0.37]	<a href="#">PDF</a>

# bimed Hygienic Cable Glands - EMC

## Overview

### Hygienic Cable Glands – EMC

EMC Hygienic Cable Glands can be used in applications in manufacturing and packaging of food and pharmaceuticals, cleanroom technology, biotechnology, chemical industry that also requires the shielding for electromagnetic protection. The glands use the same technology and design features as the standard hygienic glands, they have a smooth finish with no threads exposed which prevents harmful microorganisms from sticking to the surface. The sealing material is in accordance with FDA guideline 21 CFR 177.2600. The Design allows for easier, faster, and lower cost cleaning. They also incorporate the same EMC technology as our standard EMC glands. These glands maintain the shielding integrity from the shielded cable to the enclosure simply by tightening the gland. Long lasting contact is achieved using a high-definition spring that is designed to move to prevent damage to the sheath. EMC Hygienic cable glands come in Metric mounting sizes M16 to M25 or in NPT mounting sizes 3/8 to 3/4 inches. These can accept cable sizes 0.197 to 0.669 inches [5 to 17mm].



## Features

### Material

- Body: Stainless Steel 1.4305(AISI 303)
- Cap: Stainless Steel 1.4305(AISI 303)
- Locknut: Stainless Steel 1.4305(AISI 303)
- Contact Spring: Special Copper Alloy
- Seal: EPDM, according to FDA guideline 21 CFR 177.2600

### Protection Class

- IP66, IP69, IP68 - 5 Bar [72.5 psi]
- UL TYPE 1, 2, 4, 4X, 12, 12K, 13 according to UL 50E

### Operating Temperature

- Permanent: -20 to +100°C [-4 to +212°F]
- Intermittent: -40 to +150°C [-40 to +302°F]

### Attachment Thread

- EN 60423

### Body

- Manufactured according to the requirements of EN 50262

## Agency Approvals

### Approvals

- UL Recognized or Listed File # E199260 \*
- CE



\*Note: To obtain the most current agency approval information, see the Agency Compliance & Certifications Checklist section on the specific part number's web page.

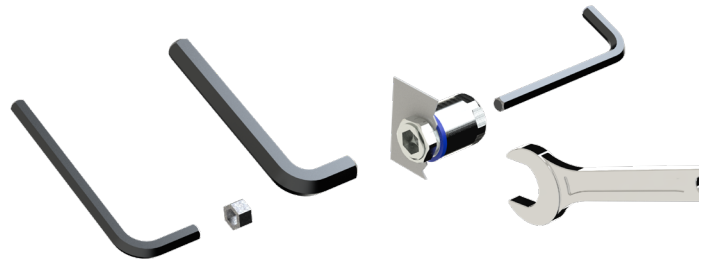
Cable Glands										
Thread Type Metric according to EN 60423										
Part Number	Price	Qty	Thread Size	Clamping Range mm [in]	Shield Diameter mm [in]	Allen Wrench Size	Allen Adapter	Tightening Torque		Drawing Link
								Cap to Body	Body to Enclosure (or Locknut to Body)	
								N-m [lb-ft]	N-m [lb-ft]	
<a href="#">BMEHG1-01-L</a>	\$43.50	1	M16 x 1.5mm	5.0-10.0 [0.20 - 0.39]	4.0-9.0 [0.16 - 0.35]	10	BMFGT-02	4 ± 0.5 [2.95 ± 0.37]	3 ± 0.5 [2.21 ± 0.37]	<a href="#">PDF</a>
<a href="#">BMEHG1-02-L</a>	\$49.75		M20 x 1.5mm	6.0-12.0 [0.24 - 0.47]	5.0-11.0 [0.20 - 0.43]	13	BMFGT-03	5 ± 0.5 [3.69 ± 0.37]	2.5 ± 0.5 [1.85 ± 0.37]	<a href="#">PDF</a>
<a href="#">BMEHG1-03-L</a>	\$68.75		M25 x 1.5mm	12.0 - 17.0 [0.24 - 0.67]	10.0-16.0 [0.39 - 0.62]	17	BMFGT-04	6 ± 0.5 [4.43 ± 0.37]	4 ± 0.5 [2.95 ± 0.37]	<a href="#">PDF</a>

Cable Glands										
Thread Type NPT according to ANSI ASME B1.20.1										
Part Number	Price	Qty	Thread Size	Clamping Range mm [in]	Shield Diameter mm [in]	Allen Wrench Size	Allen Adapter	Tightening Torque		Drawing Link
								Cap to Body	Body to Enclosure (or Locknut to Body)	
								N-m [lb-ft]	N-m [lb-ft]	
<a href="#">BNEHG1-01-L</a>	\$44.75	1	3/8in NPT	5.0-10.0 [0.20 - 0.39]	4.0-9.0 [0.16 - 0.35]	10	BMFGT-02	4 ± 0.5 [2.95 ± 0.37]	4 ± 0.5 [2.95 ± 0.37]	<a href="#">PDF</a>
<a href="#">BNEHG1-02-L</a>	\$52.75		1/2in NPT	6.0-12.0 [0.24 - 0.47]	5.0-11.0 [0.20 - 0.43]	13	BMFGT-03	5 ± 0.5 [3.69 ± 0.37]	5.5 ± 0.5 [4.06 ± 0.37]	<a href="#">PDF</a>
<a href="#">BNEHG1-03-L</a>	\$72.50		3/4in NPT	12.0 - 17.0 [0.24 - 0.67]	10.0-16.0 [0.39 - 0.62]	17	BMFGT-04	6 ± 0.5 [4.43 ± 0.37]	6 ± 0.5 [4.43 ± 0.37]	<a href="#">PDF</a>

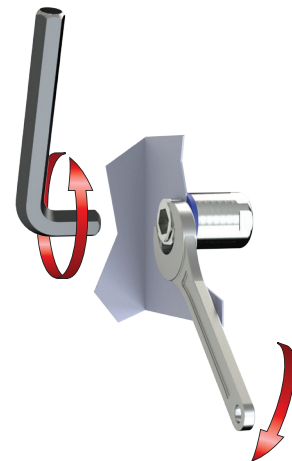
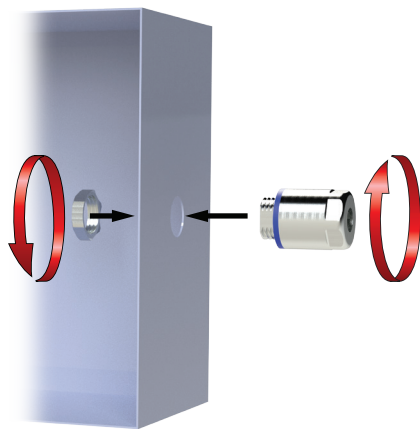
# bimed Hygienic Cable Glands Adapters

## Hygienic Cable Gland Adapters

Hygienic Cable Gland Adapters allows the use of a smaller Allen wrench to be used when installing the hygienic cable gland.



Hygienic Cable Gland Adapters						
Part Number	Price	Qty	Allen Wrench Size	Allen Size Reduction	For Use With	Drawing Link
<a href="#">BMFGT-01</a>	\$19.75	1	5	Allen size 7mm to Allen size 5mm	<a href="#">BMHG1-0S-L</a> , <a href="#">BNHG1-0S-L</a>	<a href="#">PDF</a>
<a href="#">BMFGT-02</a>	\$20.00		6	Allen size 10mm to Allen size 6mm	<a href="#">BMHG1-01-L</a> , <a href="#">BNHG1-01-L</a> , <a href="#">BMEHG1-01-L</a> , <a href="#">BNEHG1-01-L</a>	<a href="#">PDF</a>
<a href="#">BMFGT-03</a>	\$20.00		8	Allen size 13mm to Allen size 8mm	<a href="#">BMHG1-02-L</a> , <a href="#">BNHG1-02-L</a> , <a href="#">BMEHG1-02-L</a> , <a href="#">BNEHG1-02-L</a>	<a href="#">PDF</a>
<a href="#">BMFGT-04</a>	\$20.00		10	Allen size 17mm to Allen size 10mm	<a href="#">BMHG1-03-L</a> , <a href="#">BNHG1-03-L</a> , <a href="#">BMEHG1-03-L</a> , <a href="#">BNEHG1-03-L</a>	<a href="#">PDF</a>



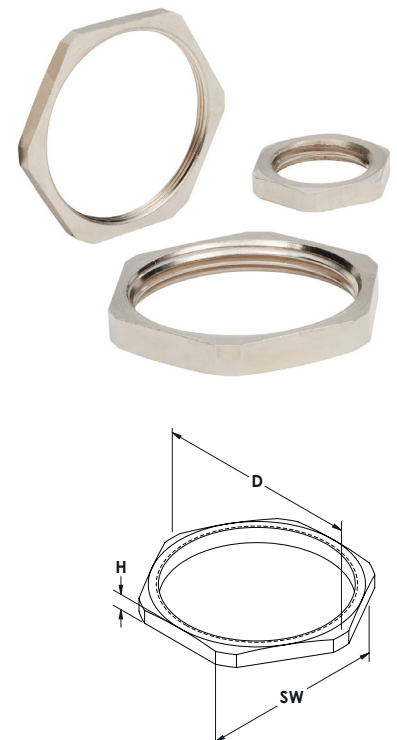


# bimed Cable Glands Replacement Hex Nuts

Replacement Hex Nuts for Plastic Cable Glands									
Type	Light Gray	Price	Black	Price	Qty	Thread Size	Dimensions – mm [in]		
							SW	D	H
Metric	<a href="#">BML-1S</a>	\$1.75	<a href="#">BML-2S</a>	\$1.75	5	M12 x 1.5 mm	18.0 [0.71]	19.5 [0.77]	5.0 [0.20]
	<a href="#">BML-11</a>	\$1.75	<a href="#">BML-21</a>	\$1.75	5	M16 x 1.5 mm	22.0 [0.87]	24.2 [0.95]	5.0 [0.20]
	<a href="#">BML-12</a>	\$1.75	<a href="#">BML-22</a>	\$1.75	5	M20 x 1.5 mm	26.0 [1.02]	28.6 [1.13]	6.0 [0.24]
	<a href="#">BML-13</a>	\$1.75	<a href="#">BML-23</a>	\$1.75	5	M25 x 1.5 mm	32.0 [1.26]	35.0 [1.38]	6.0 [0.24]
	<a href="#">BML-14</a>	\$1.75	<a href="#">BML-24</a>	\$1.75	5	M32 x 1.5 mm	41.0 [1.61]	46.1 [1.81]	7.0 [0.28]
	<a href="#">BML-15</a>	\$1.75	<a href="#">BML-25</a>	\$1.75	2	M40 x 1.5 mm	50.0 [1.97]	55.3 [2.18]	7.0 [0.28]
	<a href="#">BML-16</a>	\$1.75	<a href="#">BML-26</a>	\$1.75	2	M50 x 1.5 mm	60.0 [2.36]	66.1 [2.60]	8.0 [0.31]
	<a href="#">BML-17</a>	\$2.25	<a href="#">BML-27</a>	\$2.25	2	M63 x 1.5 mm	75.0 [2.95]	82.5 [3.25]	8.0 [0.31]
PG	<a href="#">BL-11</a>	\$1.75	<a href="#">BL-21</a>	\$1.75	5	PG 7	19.0 [0.75]	21.0 [0.83]	5.0 [0.20]
	<a href="#">BL-12</a>	\$1.75	<a href="#">BL-22</a>	\$1.75	5	PG 9	22.0 [0.87]	24.0 [0.94]	5.0 [0.20]
	<a href="#">BL-13</a>	\$1.75	<a href="#">BL-23</a>	\$1.75	5	PG11	24.0 [0.94]	26.0 [1.02]	5.0 [0.20]
	<a href="#">BL-14</a>	\$1.75	<a href="#">BL-24</a>	\$1.75	5	PG13.5	27.0 [1.06]	29.0 [1.14]	6.0 [0.24]
	<a href="#">BL-15</a>	\$1.75	<a href="#">BL-25</a>	\$1.75	5	PG16	30.0 [1.18]	33.0 [1.30]	6.0 [0.24]
	<a href="#">BL-16</a>	\$1.75	<a href="#">BL-26</a>	\$1.75	5	PG21	36.0 [1.42]	39.0 [1.54]	7.0 [0.28]
	<a href="#">BL-17</a>	\$1.75	<a href="#">BL-27</a>	\$1.75	5	PG29	46.0 [1.81]	50.0 [1.97]	7.0 [0.28]
	<a href="#">BL-18</a>	\$1.75	<a href="#">BL-28</a>	\$1.75	2	PG36	60.0 [2.36]	66.0 [2.60]	8.0 [0.31]
	<a href="#">BL-19</a>	\$2.00	<a href="#">BL-29</a>	\$2.00	2	PG42	65.0 [2.56]	73.0 [2.87]	8.0 [0.31]
	<a href="#">BL-20</a>	\$2.25	<a href="#">BL-30</a>	\$2.25	2	PG48	70.0 [2.78]	78.0 [3.07]	8.0 [0.31]
NPT	<a href="#">BPL-11</a>	\$1.75	<a href="#">BPL-21</a>	\$1.75	5	NPT 3/8"	22.0 [0.87]	25.0 [0.98]	7.0 [0.28]
	<a href="#">BPL-12</a>	\$1.75	<a href="#">BPL-22</a>	\$1.75	5	NPT 1/2"	27.0 [1.06]	30.5 [1.20]	7.0 [0.28]
	<a href="#">BPL-13</a>	\$2.25	<a href="#">BPL-23</a>	\$2.25	5	NPT 3/4"	33.0 [1.30]	37.5 [1.48]	7.0 [0.28]
	<a href="#">BPL-14</a>	\$4.25	<a href="#">BPL-24</a>	\$4.25	5	NPT 1"	41.0 [1.61]	46.5 [1.83]	7.0 [0.28]



Replacement Hex Nuts for Brass Cable Glands							
Type	Part Number	Price	Qty	Thread Size	Dimensions – mm [in]		
					SW	D	H
Metric	<a href="#">BMBL-01</a>	\$2.00	5	M12 x 1.5 mm	15.0 [0.59]	16.6 [0.65]	2.8 [0.11]
	<a href="#">BMBL-02</a>	\$2.50	5	M16 x 1.5 mm	19.0 [0.75]	21.0 [0.83]	3.0 [0.12]
	<a href="#">BMBL-03</a>	\$3.50	5	M20 x 1.5 mm	24.0 [0.94]	26.5 [1.04]	3.5 [0.14]
	<a href="#">BMBL-04</a>	\$4.25	5	M25 x 1.5 mm	30.0 [1.18]	33.0 [1.30]	4.0 [0.16]
	<a href="#">BMBL-05</a>	\$5.50	5	M32 x 1.5 mm	36.0 [1.42]	39.5 [1.56]	5.0 [0.20]
	<a href="#">BMBL-06</a>	\$4.75	2	M40 x 1.5 mm	46.0 [1.81]	51.0 [2.01]	5.0 [0.20]
	<a href="#">BMBL-07</a>	\$12.00	2	M50 x 1.5 mm	60.0 [2.36]	66.0 [2.60]	5.0 [0.20]
	<a href="#">BMBL-08</a>	\$13.00	2	M63 x 1.5 mm	70.0 [2.76]	77.0 [3.03]	6.0 [0.24]
PG	<a href="#">BSL-01</a>	\$2.00	5	PG 7	15.0 [0.59]	16.6 [0.65]	2.8 [0.11]
	<a href="#">BSL-02</a>	\$2.00	5	PG 9	18.0 [0.71]	20.0 [0.79]	2.8 [0.11]
	<a href="#">BSL-03</a>	\$2.00	5	PG11	21.0 [0.83]	23.5 [0.93]	3.0 [0.12]
	<a href="#">BSL-04</a>	\$2.50	5	PG13.5	23.0 [0.91]	25.5 [1.00]	3.0 [0.12]
	<a href="#">BSL-05</a>	\$2.50	5	PG16	26.0 [1.02]	29.0 [1.14]	3.0 [0.12]
	<a href="#">BSL-06</a>	\$4.75	5	PG21	32.0 [1.26]	35.5 [1.40]	3.5 [0.14]
	<a href="#">BSL-07</a>	\$2.75	2	PG29	41.0 [1.61]	45.0 [1.77]	4.0 [0.16]
	<a href="#">BSL-08</a>	\$4.25	2	PG36	51.0 [2.01]	56.0 [2.20]	5.0 [0.20]
	<a href="#">BSL-09</a>	\$2.75	1	PG42	60.0 [2.36]	66.0 [2.60]	5.0 [0.20]
	<a href="#">BSL-10</a>	\$3.75	1	PG48	64.0 [2.52]	70.5 [2.78]	5.5 [0.22]
NPT	<a href="#">BNLN-01</a>	\$6.00	5	NPT 3/8"	24.0 [0.94]	26.5 [1.04]	5.0 [0.20]
	<a href="#">BNLN-02</a>	\$7.50	5	NPT 1/2"	24.0 [0.94]	26.5 [1.04]	5.0 [0.20]
	<a href="#">BNLN-03</a>	\$10.50	5	NPT 3/4"	34.0 [1.34]	37.5 [1.48]	6.0 [0.24]
	<a href="#">BNLN-04</a>	\$12.00	5	NPT 1"	42.0 [1.65]	46.4 [1.83]	6.0 [0.24]



See our website: [www.AutomationDirect.com](http://www.AutomationDirect.com) for complete Engineering drawings



# Cable Glands: Replacement EMC Hex Nuts

Replacement Hex Nuts for EMC Cable Glands					
Type	Part Number	Price	Qty	Thread Size	Drawing Link
BMEL	<a href="#">BMEL-01</a>	\$2.00	5	M12 x 1.5mm	<a href="#">PDF</a>
	<a href="#">BMEL-02</a>	\$2.50	5	M16 x 1.5mm	<a href="#">PDF</a>
	<a href="#">BMEL-03</a>	\$3.00	5	M20 x 1.5mm	<a href="#">PDF</a>
	<a href="#">BMEL-04</a>	\$3.75	5	M25 x 1.5mm	<a href="#">PDF</a>
	<a href="#">BMEL-05</a>	\$5.50	5	M32 x 1.5mm	<a href="#">PDF</a>
	<a href="#">BMEL-06</a>	\$4.75	2	M40 x 1.5mm	<a href="#">PDF</a>
	<a href="#">BMEL-07</a>	\$10.25	2	M50 x 1.5mm	<a href="#">PDF</a>
	<a href="#">BMEL-08</a>	\$11.00	2	M63 x 1.5mm	<a href="#">PDF</a>
BSEL	<a href="#">BSEL-01</a>	\$2.00	5	PG7	<a href="#">PDF</a>
	<a href="#">BSEL-02</a>	\$2.25	5	PG9	<a href="#">PDF</a>
	<a href="#">BSEL-03</a>	\$2.50	5	PG11	<a href="#">PDF</a>
	<a href="#">BSEL-04</a>	\$2.75	5	PG13.5	<a href="#">PDF</a>
	<a href="#">BSEL-05</a>	\$3.00	5	PG16	<a href="#">PDF</a>
	<a href="#">BSEL-06</a>	\$5.50	5	PG21	<a href="#">PDF</a>
	<a href="#">BSEL-07</a>	\$11.00	5	PG29	<a href="#">PDF</a>
	<a href="#">BSEL-08</a>	\$5.00	2	PG36	<a href="#">PDF</a>
	<a href="#">BSEL-09</a>	\$7.00	2	PG42	<a href="#">PDF</a>
	<a href="#">BSEL-10</a>	\$6.25	2	PG48	<a href="#">PDF</a>
BNEL	<a href="#">BNEL-01S</a>	\$9.25	5	1/4in NPT	<a href="#">PDF</a>
	<a href="#">BNEL-01</a>	\$11.50	5	3/8in NPT	<a href="#">PDF</a>
	<a href="#">BNEL-02</a>	\$11.75	5	1/2in NPT	<a href="#">PDF</a>
	<a href="#">BNEL-03</a>	\$14.25	5	3/4in NPT	<a href="#">PDF</a>
	<a href="#">BNEL-04</a>	\$22.00	5	1in NPT	<a href="#">PDF</a>
	<a href="#">BNEL-05</a>	\$28.75	5	1-1/4in NPT	<a href="#">PDF</a>
	<a href="#">BNEL-06</a>	\$15.25	2	1-1/2in NPT	<a href="#">PDF</a>
<a href="#">BNEL-07</a>	\$21.25	2	2in NPT	<a href="#">PDF</a>	

CE



See our website: [www.AutomationDirect.com](http://www.AutomationDirect.com)  
for complete Engineering drawings