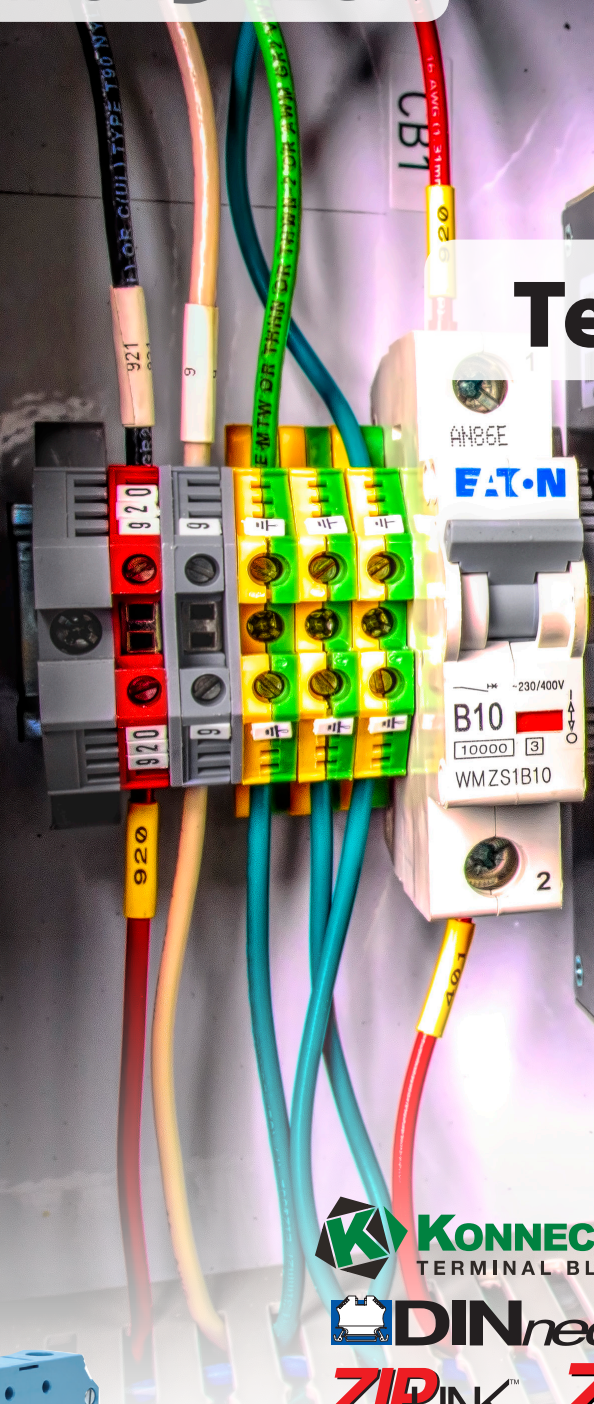


# AUTOMATIONDIRECT.COM

## Terminal Blocks



Up-to-date price list:  
[www.automationdirect.com/pricelist](http://www.automationdirect.com/pricelist)

FREE Technical Support:  
[www.automationdirect.com/support](http://www.automationdirect.com/support)

FREE Videos:  
[www.automationdirect.com/videos](http://www.automationdirect.com/videos)

FREE Documentation:  
[www.automationdirect.com/documentation](http://www.automationdirect.com/documentation)

FREE CAD drawings:  
[www.automationdirect.com/cad](http://www.automationdirect.com/cad)



# A complete lineup of connection products in stock, priced right and ready to ship.

- Economy line screw-type DIN rail mounted terminal blocks (Konnect-It®)
- Full-featured line screw-type DIN rail mounted terminal blocks (DINnectors®)
- Screwless DIN rail mounted terminal blocks (DINnectors®)
- Edison power distribution blocks
- Edison open-style terminal blocks
- DIN rail (15mm and 35mm) clips and brackets
- Wire connectors and wiring tools

- ZIPLink® Five-second PLC wiring system
- ZIPport® multi-port junction blocks
- ZIPport® Panel Interface Connectors (PICs)
- Iboco® wire duct and accessories
- Bryant® wiring devices
- Electrical hook-up / building wire
- Flexible, liquid-tight electrical tubing and connectors
- Cable ties and accessories

## Konnect-It® DIN-Rail Terminal Blocks

Most control panels use some type of terminal strip or terminal block connector to connect the control wiring (PLCs, relays, contactors, etc.) to the field wiring.

The Konnect-It series offers cost-effective terminal blocks and related components that are modular in design and fit on a 35mm or 15mm DIN rail. These terminal blocks employ a terminal connection system that meets the demands of the industrial environment and are suitable for factory wiring as well as field-wiring connections.

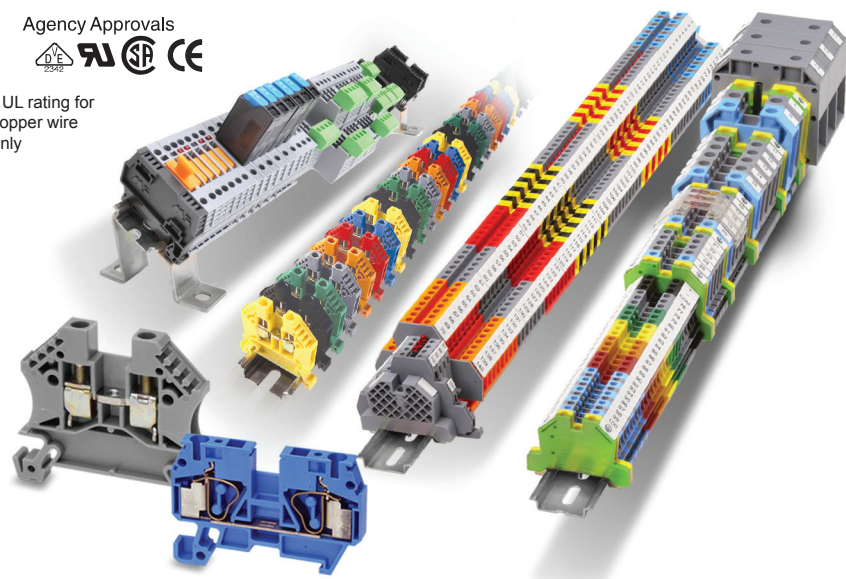
Konnect-It blocks can terminate solid or stranded wires ranging from 26 to 2/0 AWG, and offer fusing, grounding or disconnecting capability within the electrical terminal block itself.

- 100kA Short Circuit Capacity Rating (SCCR)
- Multiple international colors available

## DINnectors®

Agency Approvals  
UL, CE, VDE

\* UL rating for copper wire only



## DINnectors Full-featured Terminal Blocks

DINnectors provide a means of connecting and identifying two or more wires within the demands of an industrial environment.

DINnectors can terminate solid or stranded wires ranging from 24 to 3/0 AWG (18 to 3/0 for CSA), and offer fusing, grounding or disconnecting capability within the terminal block itself.

Most DINnectors are modular in design, so you can mix as many combinations of types, wire-sizes and quantities as can fit on the universal DIN rail.

Our range of DINnectors terminal blocks is internationally approved by various national and international standards organizations such as UL, CSA, VDE, SEV, RINA and IEC.



## KONNECT-IT® TERMINAL BLOCKS

Available in single-level, double-level, triple-level, sensor, mini, grounding, fuse holder and disconnect types.

Agency Approvals  
UL, CE, VDE

## Standard Screw DIN Rail Terminal Blocks (DINnectors)

The screw-type terminal block series includes single, double and triple-level terminal blocks, some in up to seven colors. Fuse and ground terminal blocks are also available.

Thermocouple, plug-in and supplementary protector terminal blocks support specialty applications.

Terminal block accessories include end brackets, end covers, separators, top covers, jumpers, marking tags, mounting rail, angled rail support brackets

## Power Distribution Blocks



Use finger-safe power distribution blocks to manage your power distribution needs, from splitting primary power circuits into a variety of branch circuits to providing a fixed junction tap-off point.

- Ampere ratings up to 760 Amps
- 600 VAC or VDC
- Short Circuit Current Rating (SCCR) 200kA with proper fusing
- UL 1953 listed

## Direct mount terminal blocks

Direct-mount terminal blocks are a low-cost alternative to modular blocks, easily cut to length.



## Wire Strip and Crimp Tools

Our high-quality industrial wire stripping and crimping tools are designed for a wide variety of electrical, electronic, and data connectors. All crimper tools crimp a wide range of insulated and non-insulated crimping terminals, ferrules, and connectors. All crimpers have ergonomic handles featuring controlled-cycle ratcheting mechanisms to guarantee uniform crimps every time. Crimper tools are available as fixed, interchangeable, or rotatable dies, or tool/die sets with multiple dies.

- Self-Adjusting Cut and Strip Tool
- Precision Stripping Tool
- Modular & self-adjusting Crimping Tool System
- Rotatable die for front or side crimping
- Crimping Tool & Die Sets
- Fixed-Die Ferrule & Terminal Crimping Tools
- Ferrule & Terminal Assortment Kits



## Ferrules and Crimping Terminals

High-quality insulated ferrules and crimping terminals in a number of styles provide safe and reliable wiring connections.



## ZIPLink Pre-Wired Connection Cables and Modules



## Cut your PLC wiring time from hours down to minutes with ZIPLink modules and cables!

The ZIPLink system eliminates the normally tedious process of wiring PLC I/O to terminal blocks.

- Simply plug one end of a ZIPLink cable into a DirectLOGIC, Do-more, Productivity Series or CLICK I/O module and the other end into a ZIPLink connector module. It's that easy!
- ZIPLink connector modules include feed-through, relay and fuse options
- ZIPLinks are also available for AutomationDirect GS/DuraPulse/SureServo AC Drive wiring solutions



## Screwless DIN Rail Terminal Blocks (DINnectors)

The screwless terminal block series includes single, double-level, common-point, disconnect, ground and plug-in terminal blocks.

- Faster installation than standard screws with easy clamp system connection
- Vibration-proof connection
- Plug-In models
- Meets UL, CSA and IEC standards

## Open Style Terminal Blocks

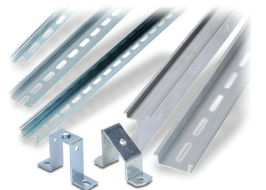
Edison open-style terminal blocks are a convenient way to manage your power distribution needs.

- Engineered to maintain an SCCR rating of 200kA with copper conductors and an SCCR of 10 kA for aluminum conductors
- 600 VAC or VDC, Ampere ratings up to 760 Amps
- UL 1953 listed



## DIN Rails, Clips and Brackets

Steel and aluminum DIN rail, raised DIN rail, support brackets and mounting clips for DINnectors® terminal blocks and other devices.





Available in single-level, double-level, triple-level, sensor, mini, grounding, fuse holder and disconnect types. Konnect-it terminal blocks can terminate solid or stranded wires ranging from 26 to 2/0 AWG.

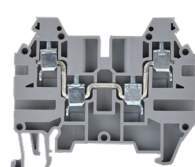


A full lineup of economically-priced terminal blocks and accessories

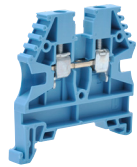
## Screw-type at a glance

### Single-level Feed-through Terminal Blocks

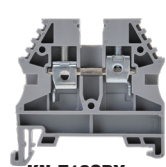
Can handle currents up to 175A. These blocks accept a wide range of wiring sizes from 26 AWG to 2/0 AWG and have a 100kA SCCR rating.



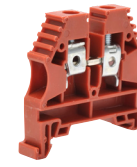
**KN-T12SP4**  
(Gray only)



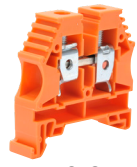
**KN-T12BLU-xxx**  
(all colors except Gray)



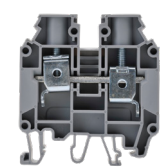
**KN-T10GRY-xxx**  
(All colors except yellow and white)



**KN-T8RED-xxx**  
(All colors except gray and black)



**KN-T6ORG-xxx**  
(All colors except gray and black)



**KN-T4GRY**  
(Gray and blue only)



**KN-T2GRY**  
(Gray and blue only)



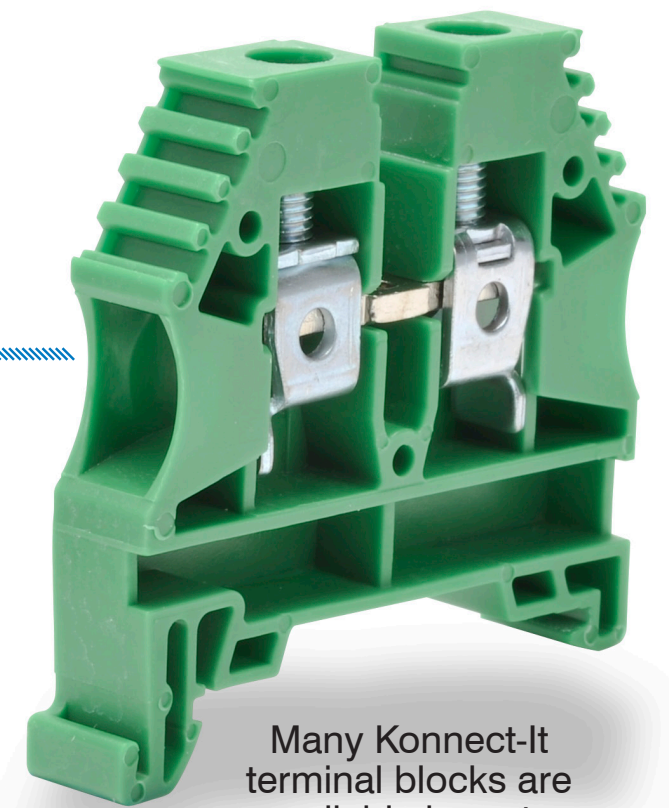
**KN-T1/0GRY**  
(Gray and blue only)



**KN-T2/0GRY**  
(Gray and blue only)



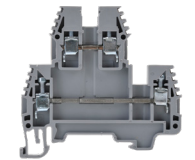
- 100kA Short Circuit Capacity Rating (SCCR)
- Multiple international colors available



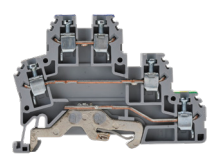
Many Konnect-It terminal blocks are available in up to 8 colors!

### Double-level Feed-through Terminal Blocks

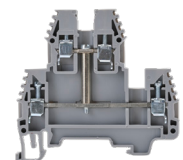
Come in 20A and 30A versions and a variety of colors. Optional features include LED indications, diode and direct cross level connections, and double-level terminal blocks with an added grounding leg.



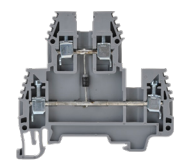
**KN-D12GRY**



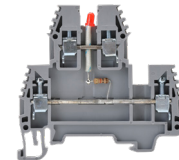
**KN-DG12**



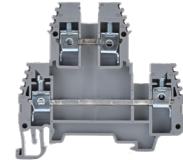
**KN-D12X**



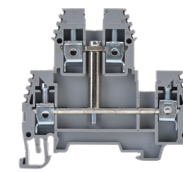
**KN-D12DR1**



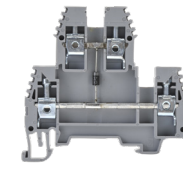
**KN-D12LED-24DC**



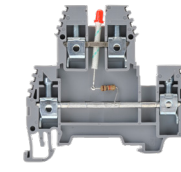
**KN-D10GRY**



**KN-D10X**



**KN-D10DR1**



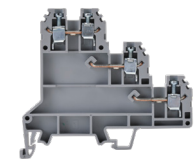
**KN-D10LED-24DC**

### Triple-level Feed-through Terminal Blocks

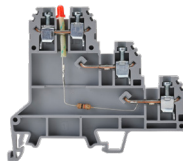
Can handle up to 24A and can accept a wide range of wiring sizes from 24 AWG to 12 AWG. Optional features include NPN and PNP sensor blocks with LED indication, as well as triple-level terminal blocks with an added grounding leg.



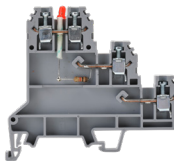
**KN-TL14**



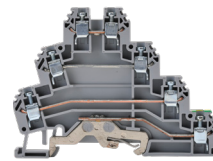
**KN-TL14S**



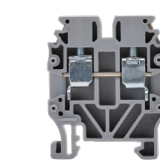
**KN-TL14SLN**



**KN-TL14SLP**



**KN-TG12**



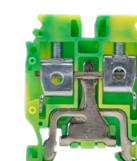
**KN-M12GRY**



**KN-M10GRY**



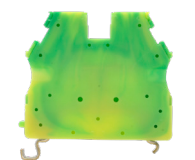
**KN-MG12**



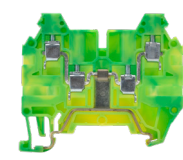
**KN-MG10**

### Ground Terminal Blocks

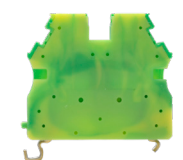
Available with screw-down or snap-on clamping ground connection and offer low contact resistance and corrosion-free connection points.



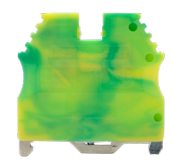
**KN-G12SP**



**KN-G12SP4**



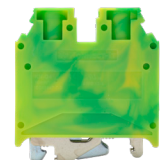
**KN-G10SP**



**KN-G10**



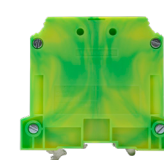
**KN-G8**



**KN-G4**



**KN-G2**



**KN-G1/0**



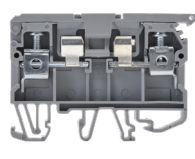
**KN-MG12**



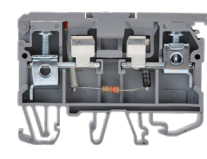
**KN-MG10**

### Circuit Protection Blocks

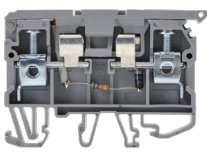
Fuse holder terminal blocks can be used with 5mm x 20mm glass fuses up to 6.3A. Fuses are easily installed and removed. Fuse holder terminal blocks are an ideal solution when there is a need to change fuses while the system is powered.



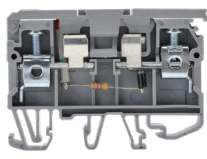
**KN-F10**



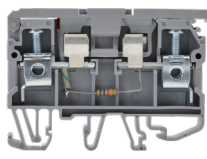
**KN-F10L110AC**



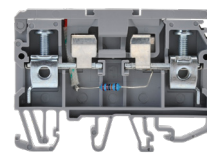
**KN-F10L220AC**



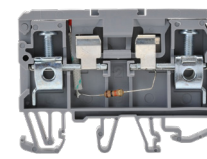
**KN-F10L24AC**



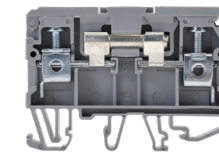
**KN-F10L110DC**



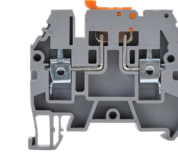
**KN-F10L220DC**



**KN-F10L24DC**



**KN-F10-DCH**



**KN-KBD10**

### Disconnect Terminal Blocks

Disconnect terminal blocks are an easy solution to enable circuits to be opened or to perform tests while the system is powered.

### Accessories

- Separators
- Top Covers
- Label Holders
- End Brackets
- Jumpers
- Marking Tags
- ... and more

