

AUTOMATIONDIRECT.com

Order Online at AutomationDirect.com
BUY
ONLINE
Available in the U.S. and Canada only

Fast Shipping of In-stock Products

30-day Money-Back Guarantee
30
day

FREE Technical Support
FREE Technical Support
Located in USA

socomec
Innovative Power Solutions

trumeter
innovation by design

Power and Process Monitoring

Up-to-date price list:
www.automationdirect.com/pricelist

FREE Technical Support:
www.automationdirect.com/support

FREE Videos:
www.automationdirect.com/videos

FREE Documentation:
www.automationdirect.com/documentation

FREE CAD drawings:
www.automationdirect.com/cad



Power and Process Monitoring Devices at Great Prices

Power Measurement Devices

Socomec DIRIS A Power Measurement Devices

Socomec DIRIS A Power Monitors provide high accuracy readings of a system's energy quality via a detailed breakdown of harmonics identifying: troughs, outages, overvoltages, and overcurrents. These measurements enable you to monitor energy quality and costs, reduce production losses, improve efficiency, and enhance performance.

- Easy to use solution for industry, infrastructure, and data centers
- Integrated temperature sensor (A10 model)
- Detects wiring errors
- Panel mount (A20) and DIN rail mount (A10)
- Compact design
- Compliant with ANSI C12.20 and IEC 61557-12
- Revenue grade accuracy



Trumeter ADM100 Power Meters

Trumeter ADM100 series power meters feature an easy-to-read, 3-inch 3 color selectable backlight display that clearly indicates electrical circuit performance. The power meters provide a user-programmable scale and custom alarm messages, display critical parameters, and immediately alert operators when a parameter is out of range.

- Measures active (W), reactive (var), and apparent (VA) power
- Two open-collector, opto-isolated discrete outputs
- Analog 4-20mA output
- Modbus RTU via RS-485
- Works with potential and current transformers



Graphical Panel Meters

Graphical panel meters with versatile programmable features and user-configurable alarms

Trumeter's graphical panel meters combine the instant visual representation of an analog meter with the accuracy of a digital meter. These versatile panel meters feature a programmable bar graph with configurable alarms to provide critical power or process data at a glance.

Standard Graphical Panel Meters

Trumeter ADM100 standard graphical panel meters measure voltage, current, frequency, or temperature process variables, or directly monitor high voltage or current sources. Features include 3 color selectable backlight, analog-style readouts, a programmable bar graph, a digital display, 4-character custom messaging, and digital/analog outputs.

Meter Types

- Multi-Function Meters display current, voltage, or frequency
- Current Meters display CT inputs as scaled current
- Process Meters display analog inputs as scaled process data
- Rate Meters display cyclic discrete inputs as frequency or cycle time
- Temperature Meters display thermocouple inputs as temperature

Starting at \$81.00



Advanced Graphical Panel Meters

Trumeter ADM200 advanced panel meters feature a large, easy-to-read 4-inch display, Modbus communication, and a versatile set of inputs, making them ideal for a variety of industrial applications.

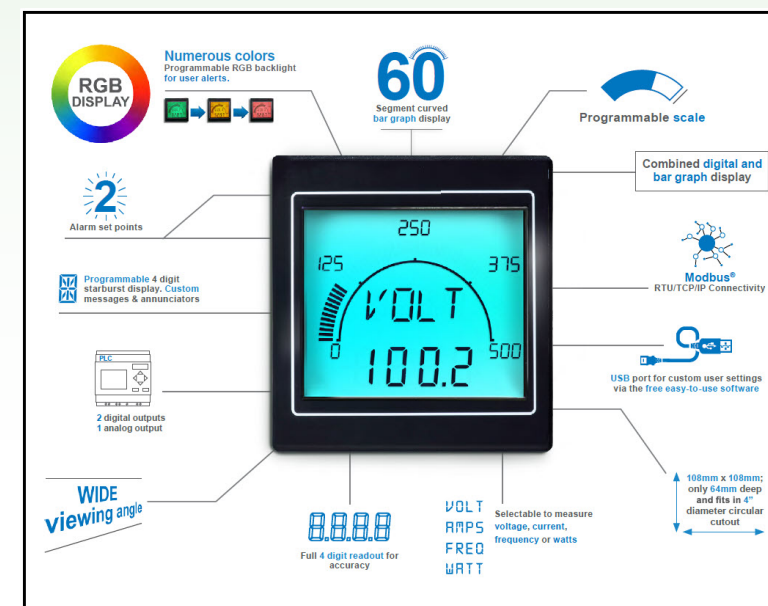
Advantages over the ADM100:

- More input types and ranges
- Double the accuracy, on some models
- 1000's of display color options

Additional features include:

- Modbus RTU OR Modbus RTU & TCP communication
- 1000's of display color options
- More controls over the bar graph/screen
- Two analog output modes
- Replaces traditional round meters
- 6 pre-configured error messages and customizable messages

Starting at \$212.00



Graphical Panel Meters

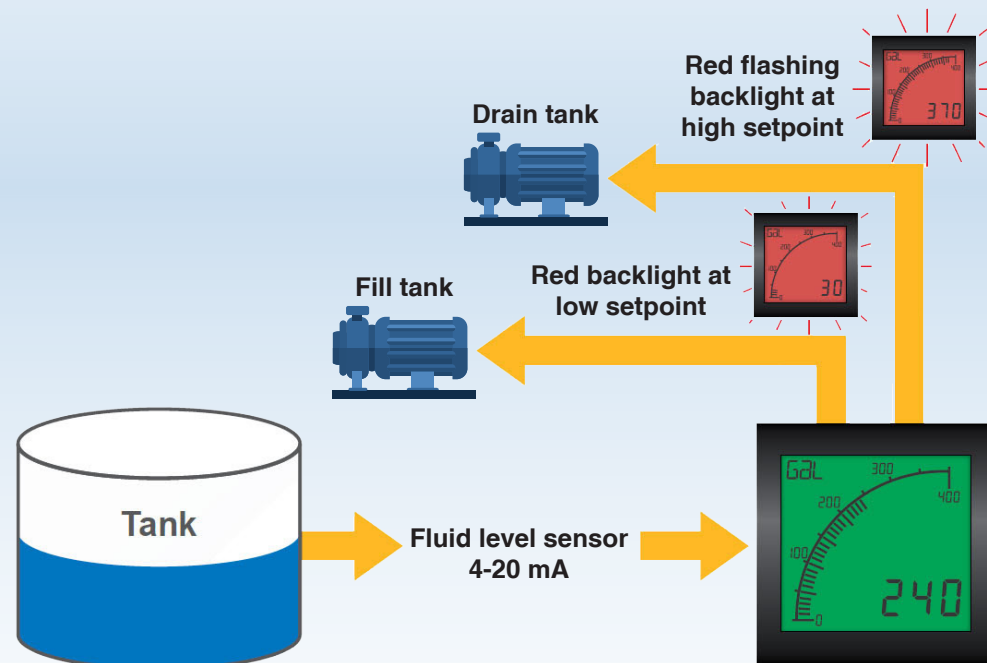
Application Example: Fluid Level

An ADM series Process Meter displays the volume of fluid in the tank. The 4-20 mA analog output from the fluid level sensor is scaled to gallons and displayed.

High and low setpoints are configured so that the normal green display will flash red when the tank is too full or empty. The digital outputs are integrated into the tank pumping system, and the tank is automatically drained or filled if the setpoints are exceeded.

Key features

- Large multi-format display
- 40-segment bargraph display scaled to input or percentage 40-segment bar graph display
- Large 4-digit display
- Separate starburst display area for annunciators, custom message, and alarm information
- Peak hold feature
- Dynamic backlight color
- User-adjustable backlight brightness, flash and color (red, green, white)
- Wide viewing angle (both horizontal and vertical)
- 3-year warranty (with registration at trumeter.com)



Hour Meters and Counters

Trumeter hour meters and counters provide reliable counting and run-time tracking metered from processes, equipment, or machinery. These units are available in a variety of input voltage ranges and mounting options.

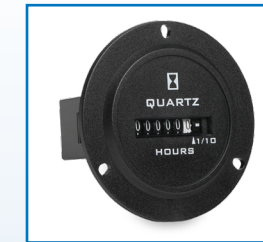
Hour Meters

These measure equipment run-time to track usage or predict maintenance schedules; battery-powered and electromechanical units are available.

Starting at
\$22.50



Electrical Hour Meters
Low-cost, compact, self-powered Trumeter hour meters include a non-replaceable lithium battery for reliable operation up to ten years.



Electromechanical Hour Meters
With a quartz time base and sealed case, these Trumeter hour meters provide years of reliable, accurate service. All models are NEMA 4X/12 rated when mounted in a suitable enclosure with the optional gasket.

Counters

Battery-powered and electromechanical units totalize input pulses that can represent usage, quantity or other process measurements.

Starting at
\$22.00



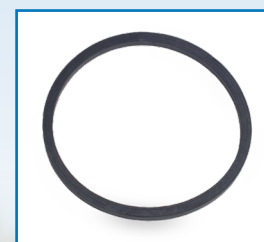
Electrical Counters
These compact, self-powered Trumeter LCD counters include a non-replaceable lithium battery for reliable operation up to ten years.



Electromechanical Counters
Low cost, simple and compact design, and reliability make these Trumeter electromechanical counters ideal for most counting applications.

Gaskets and Accessories

Starting at
\$2.00



Gaskets provide NEMA 4X/12 and IP66 ratings when used to install Trumeter hour meters and counters in a suitable enclosure.

Applications

- Mobile equipment/vehicles
- Maintenance interval monitoring
- Cycle monitoring
- Material handling
- Motor/Generator runtime
- Production/Batch counting/timing

