



Mechanical Connectors

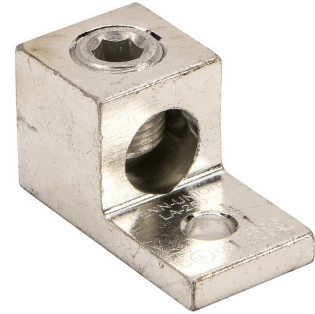
1-Opening Aluminum Dual-Rated Lugs LA Series

Overview

The LA series is a heavy-duty high-strength aluminum dual-rated connector that makes a reliable electrical connection to either an aluminum or copper conductor. These lugs have a single opening and are designed for easy installation while maintaining a low resistance high strength connection.

Features

- Use with copper or aluminum conductors
- Manufactured from high strength aluminum alloy extrusion
- Electro-tin plated to ensure minimum contact resistance and corrosion protection when used with copper wire
- Connectors are rated for 600V, 90°C [194°F] applications
- The use of oxide inhibitor is recommended for all aluminum terminations



LA-250-1



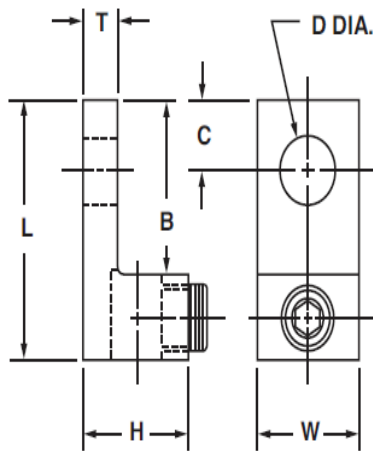
1-Opening Aluminum Dual-Rated Lugs - LA Series												
Part Number	Price	Qty	Type	Voltage Rating	Number of Openings	Conductor Material and Conductor Range	Tightening Torque	Conductor Bolt Style	Number of Mounting Holes	Mounting Bolt Size	Material	Drawing Link
LA-0-1	\$1.25	1	Box	600V	1	Copper (1) 14-1/0 AWG (2) 14-4 AWG Aluminum (1) 12-1/0 AWG (2) 12-4 AWG	CU: 50 lb•in AL: 35 lb•in	Slotted set screw	1	1/4 in	Aluminum-tin plated	PDF
LA-2-1	\$0.75					Copper (1) 14-2 AWG (2) 14-10 AWG Aluminum (1) 12-2 AWG (2) 10-12 AWG	45 lb•in	Slotted set screw		1/4 in		PDF
LA-2/0-1	\$1.25					Copper (1) 14-2/0 AWG Aluminum (1) 8-2/0 AWG	120 lb•in	3/16 in hex		1/4 in		PDF
LA-250-1	\$2.75					Copper (1) 6 AWG-250 MCM Aluminum (1) 6 AWG-250 MCM	275 lb•in	5/16 in hex		5/16 in		PDF
LA-350-1	\$4.50					Copper (1) 6 AWG-350 MCM Aluminum (1) 6 AWG-350 MCM	275 lb•in	5/16 in hex		3/8 in		PDF
LA-500-1	\$6.75					Copper (1) 4 AWG-500 MCM Aluminum (1) 4 AWG-500 MCM	375 lb•in	3/8 in hex		3/8 in		PDF
LA-6-1	\$0.50					Copper (1) 14-4 AWG Aluminum (1) 8-4 AWG	35 lb•in	Slotted set screw		1/4 in		PDF
LA-600-1	\$8.50					Copper (1) 2 AWG-600 MCM Aluminum (1) 2 AWG-600 MCM	500 lb•in	1/2 in hex		3/8 in		PDF
LA-800-1	\$12.25					Copper (1) 300-800 MCM Aluminum (1) 300-800 MCM	500 lb•in	1/2 in hex		5/8 in		PDF

Note: Use same conductor type, Copper or Aluminum, per opening. Do not mix conductor type in an opening.

PENNUNION™ Mechanical Connectors

1-Opening Aluminum Dual-Rated Lugs LA Series

1-Opening Aluminum Dual-Rated Lugs - LA Series Dimensions							
Part Number	Approximate Dimensions in [mm]						
	L	W	H	T	B	C	D (Dia.)
LA-0-1	1.46 [37.08]	0.63 [16.00]	0.79 [20.26]	0.19 [4.82]	0.84 [21.33]	0.44 [11.17]	0.27 [6.85]
LA-2-1	1.16 [29.46]	0.50 [12.70]	0.55 [13.97]	0.11 [2.79]	0.69 [17.52]	0.31 [7.87]	0.27 [6.85]
LA-2/0-1	1.46 [37.08]	0.63 [16.00]	0.79 [20.26]	0.19 [4.82]	0.84 [21.33]	0.44 [11.17]	0.27 [6.85]
LA-250-1	2.00 [50.80]	1.00 [25.40]	1.12 [28.44]	0.25 [6.35]	1.00 [25.40]	0.47 [11.93]	0.33 [8.38]
LA-350-1	2.25 [57.15]	1.13 [28.70]	1.25 [31.75]	0.25 [6.35]	1.13 [28.70]	0.50 [12.70]	0.41 [10.41]
LA-500-1	2.81 [71.37]	1.50 [38.10]	1.57 [39.87]	0.31 [7.87]	1.59 [40.38]	0.87 [22.09]	0.41 [10.41]
LA-6-1	1.06 [26.92]	0.50 [12.70]	0.50 [12.70]	0.09 [2.28]	0.68 [17.27]	0.25 [6.35]	0.27 [6.85]
LA-600-1	3.19 [81.02]	1.50 [38.10]	1.57 [39.87]	0.44 [11.17]	1.81 [45.97]	0.87 [22.09]	0.41 [10.41]
LA-800-1	3.37 [85.59]	1.75 [44.45]	1.94 [49.27]	0.50 [12.70]	1.75 [44.45]	0.87 [22.09]	0.66 [16.76]





Mechanical Connectors

2-Opening Aluminum Dual-Rated Lugs L2A Series

Overview

The L2A series is a heavy-duty high strength aluminum dual-rated connector that makes a reliable electrical connection to either an aluminum or copper conductor. These lugs have 2 openings and are designed for easy installation while maintaining a low resistance high strength connection.

Features

- For use with copper or aluminum conductors
- Manufactured from high strength aluminum alloy extrusion
- Electro-tin plated to ensure minimum contact resistance and corrosion protection
- Connectors are rated for 600V, 90°C [194°F] applications
- The use of oxide inhibitor is recommended for all aluminum terminations



L2A-250-1



2-Opening Aluminum Dual-Rated Lugs - L2A Series												
Part Number	Price	Qty	Type	Voltage Rating	Number of Openings	Conductor Material and Conductor Range	Tightening Torque	Conductor Bolt Size	Number of Mounting Holes	Mounting Bolt Size	Material	Drawing Link
L2A-0-1	\$2.00	1	Box	600V	2	Copper (1) 14 to 1/0 AWG Aluminum (1) 8 to 1/0 AWG	40 lb•in	Slotted set screw	1	1/4 in	Aluminum-tin plated	PDF
L2A-2/0-1	\$2.25					Copper (1) 14 to 2/0 AWG Aluminum (1) 8 to 2/0 AWG	120 lb•in	3/16 in hex		1/4 in		PDF
L2A-250-1	\$5.75					Copper (1) 6 AWG-250 MCM Aluminum (1) 6 AWG-250 MCM	225 lb•in	5/16 in hex		3/8 in		PDF
L2A-350-1	\$7.75					Copper (1) 6 AWG-350 MCM Aluminum (1) 6 AWG-350 MCM	225 lb•in	5/16 in hex		1/2 in		PDF
L2A-600-1	\$13.25					Copper (1) 2 AWG-600 MCM Aluminum (1) 2 AWG-600 MCM	400 lb•in	1/2 in hex		1/2 in		PDF

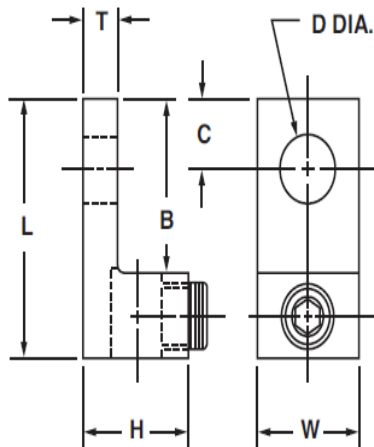
Note: Use same conductor type, Copper or Aluminum, per opening. Do not mix conductor type in an opening.



PennUnion™ Mechanical Connectors

2-Opening Aluminum Dual-Rated Lugs L2A Series

2-Opening Aluminum Dual-Rated Lugs - L2A Series Dimensions							
Part Number	Approximate Dimensions in [mm]						
	L	W1	H	T	B	C	D (Dia.)
<u>L2A-0-1</u>	1.46 [37.08]	1.22 [30.98]	0.79 [20.06]	0.19 [4.82]	0.84 [21.33]	0.44 [11.17]	0.27 [6.85]
<u>L2A-2/0-1</u>	1.46 [37.08]	1.25 [31.75]	0.79 [20.06]	0.19 [4.82]	0.84 [21.33]	0.42 [10.66]	0.27 [6.85]
<u>L2A-250-1</u>	2.56 [65.02]	1.66 [42.16]	1.19 [30.22]	0.25 [6.35]	1.56 [39.62]	0.87 [22.09]	0.39 [9.90]
<u>L2A-350-1</u>	2.87 [72.89]	1.91 [48.54]	1.22 [30.98]	0.25 [6.35]	1.75 [44.45]	0.87 [22.09]	0.56 [14.22]
<u>L2A-600-1</u>	3.19 [81.02]	2.41 [61.12]	1.57 [39.87]	0.44 [11.17]	1.81 [45.97]	0.63 [16.00]	0.53 [13.46]



PENNUNION™ Mechanical Connectors

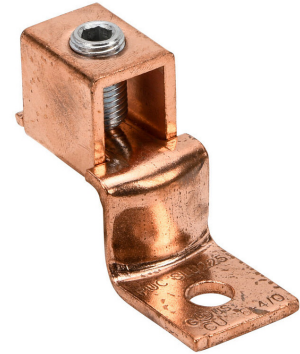
Copper Offset Tongue Lugs SAU & SLU Series

Overview

The SAU and SLU series is copper mechanical lug with an offset tongue. The concave pressure bar and V-bottom collar design assure positive contact and a reliable electrical connection to the copper conductor. These lugs have a single opening and are designed for easy installation for a wide variety of industrial applications.

Features

- Manufactured from electrolytic copper for maximum conductivity and strength
- Unique design of the concave pressure bar and V-bottom collar assures positive contact and firm, permanent grip
- Use with copper conductors only
- Offset tongue for joining a wide range of cable to equipment pads or bars
- Plated steel set screws resist corrosion



SLU-225-1

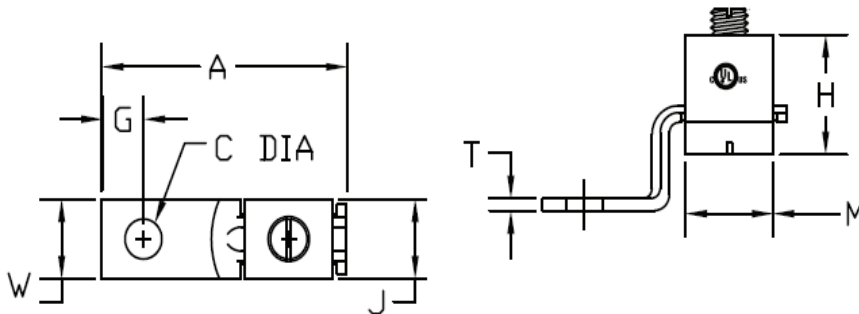


Copper Offset Tongue Lugs - SAU & SLU Series

Part Number	Price	Qty	Type	Amperage Rating	Number of Openings	Conductor Material and Conductor Range	Tightening Torque	Conductor Bolt Style	Number of Mounting Holes	Mounting Bolt Size	Material	Drawing Link
SAU-70-1	\$2.00	1	Offset tongue	70A	1	Copper (1) 14 AWG solid (1) 4 AWG stranded	14-10 AWG: 20 lb•in 8 AWG: 25 lb•in 6-4 AWG: 35 lb•in	Slotted set screw	1	1/4 in	Copper-electrolytic	PDF
SLU-125-1	\$3.50			125A		Copper (1) 8 AWG solid (1) 1/0 AWG stranded	120 lb•in	3/16 in hex		1/4 in		PDF
SLU-175-1	\$5.50			175A		Copper (1) 4 AWG stranded (1) 3/0 AWG stranded	120 lb•in			3/8 in		PDF
SLU-225-1	\$10.00			225A		Copper (1) 6 AWG stranded (1) 4/0 AWG stranded	150 lb•in	7/32 in hex		5/16 in		PDF
SLU-35-1	\$1.25			35-50A		Copper (1) 14 AWG solid (1) 6 AWG stranded	14-10 AWG: 20 lb•in 8 AWG: 25 lb•in 6 AWG: 35 lb•in	Slotted pan head		#10		PDF
SLU-70-1	\$2.25			70-90A		Copper (1) 8 AWG solid (1) 2 AWG stranded	8 AWG: 40 lb•in 6-4 AWG: 45 lb•in 3 AWG: 50 lb•in 2 AWG: 50 lb•in	Slotted set screw		1/4 in		PDF


PENNUION™ Mechanical Connectors
**Copper Offset Tongue Lugs
SAU & SLU Series**

Copper Offset Tongue Lugs - SAU & SLU Series Dimensions								
Part Number	Approximate Dimensions in [mm]							
	A	W	G	C (Dia.)	T	M	H	J
<u>SAU-70-1</u>	1.38 [35.05]	0.50 [12.70]	0.26 [6.60]	0.27 [6.85]	0.08 [2.03]	0.43 [10.92]	0.55 [13.97]	0.39 [9.90]
<u>SLU-125-1</u>	1.95 [49.53]	0.63 [16.00]	0.33 [8.38]	0.27 [6.85]	0.12 [3.04]	0.60 [15.24]	0.82 [20.82]	0.63 [16.00]
<u>SLU-175-1</u>	2.20 [55.88]	0.75 [19.05]	0.43 [10.92]	0.41 [10.41]	0.12 [3.04]	0.73 [18.54]	1.04 [26.41]	0.71 [18.03]
<u>SLU-225-1</u>	2.62 [66.54]	0.98 [24.89]	0.48 [12.19]	0.35 [8.89]	0.12 [3.04]	0.98 [24.89]	1.16 [29.46]	0.77 [19.55]
<u>SLU-35-1</u>	1.17 [29.71]	0.38 [9.65]	0.21 [5.33]	0.20 [5.08]	0.06 [1.52]	0.43 [10.92]	0.48 [12.19]	0.31 [7.87]
<u>SLU-70-1</u>	1.55 [39.37]	0.50 [12.70]	0.26 [6.60]	0.27 [6.85]	0.08 [2.03]	0.49 [12.44]	0.64 [16.25]	0.47 [11.93]



PENNUNION™ Mechanical Connectors

Copper Straight Tongue Lugs SAS & SLS Series

Overview

The SAS and SLS series are copper mechanical lugs with a compact straight tongue design. These lugs have a single opening and are designed for easy installation for a wide variety of industrial applications.

Features

- Manufactured from electrolytic copper for maximum conductivity and strength
- For use in power and grounding applications
- Use with copper conductors only
- Plated steel set screws resist corrosion
- UL 467 listed and UL 486A-B listed

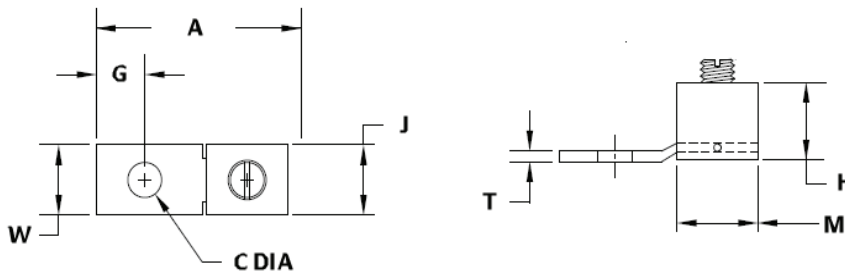


SAS-70-1



Copper Straight Tongue Lugs - SAS & SLS Series												
Part Number	Price	Qty	Type	Amperage Rating	Number of Openings	Conductor Material and Conductor Range	Tightening Torque	Conductor Bolt Style	Number of Mounting Holes	Mounting Bolt Size	Material	Drawing Link
SAS-70-1	\$1.75	1	Straight tongue	70A	1	Copper (1) 14-4 AWG	14-10 AWG: 20 lb•in 8 AWG: 25 lb•in 6-4 AWG: 35 lb•in	Slotted set screw	1	1/4 in	Copper-electrolytic	PDF
SLS-35-1	\$1.50			35-50A		Copper (1) 14-6 AWG	14-10 AWG: 13 lb•in 8 AWG: 25 lb•in 6 AWG: 25 lb•in	Slotted pan head		#10		PDF

Copper Straight Tongue Lugs - SAS & SLS Series Dimensions								
Part Number	Approximate Dimensions in [mm]							
	A	W	G	C (Dia.)	T	M	H	J
SAS-70-1	1.26 [32.04]	0.50 [12.70]	0.38 [9.65]	0.27 [6.85]	0.08 [2.03]	0.49 [12.44]	0.54 [13.71]	0.44 [11.17]
SLS-35-1	1.00 [25.40]	0.37 [9.39]	0.24 [6.09]	0.20 [5.08]	0.06 [1.52]	0.37 [9.39]	0.47 [11.93]	0.34 [8.63]



PENNUNION™ Mechanical Connectors

Aluminum Dual-Rated Panelboard Lugs PB Series

Overview

The PB series is a heavy-duty high strength aluminum dual-rated connector that makes a reliable electrical connection to either an aluminum or copper conductor. These lugs feature 2, 3, or 4 openings and a stacked space saving design for easy installation while maintaining a low resistance high strength connection.

Features

- Use with copper or aluminum conductors
- Space saving design allows for 2, 3, or 4 openings
- Manufactured from high strength aluminum alloy extrusion
- Electro-tin plated to ensure minimum contact resistance and corrosion protection when used with copper wire
- Rated for 600V, 90°C [194°F] applications
- The use of oxide inhibitor is recommended for all aluminum terminations



PB3-600D1-1



Aluminum Dual-Rated Panelboard Lugs - PB Series

Part Number	Price	Qty	Type	Voltage Rating	Number of Openings	Conductor Material and Conductor Range	Tightening Torque	Conductor Bolt Style	Number of Mounting Holes	Mounting Bolt Size	Material	Drawing Link
PB2-350S-1	\$21.50	1	Panelboard	600V	2	Copper (1) 6 AWG-350 MCM Aluminum (1) 6 AWG-350 MCM	375 lb•in	5/16 in hex	1	5/16 in	Aluminum-tin plated	PDF
PB2-600D1-1	\$41.50				2	Copper (1) 2 AWG-600 MCM Aluminum (1) 2 AWG-600 MCM	500 lb•in		2	3/8 in		PDF
PB2-750D1-1	\$47.50				2	Copper (1) 1/0 AWG-750 MCM Aluminum (1) 1/0 AWG-750 MCM	620 lb•in		2			PDF
PB3-600D1-1	\$59.50				3	Copper (1) 2 AWG-600 MCM Aluminum (1) 2 AWG-600 MCM	500 lb•in		2	PDF		
PB3-750D1-1	\$72.00				3	Copper (1) 1/0 AWG-750 MCM Aluminum (1) 1/0 AWG-750 MCM	620 lb•in		2	PDF		
PB4-600D1-1	\$59.50				4	Copper (1) 2 AWG-600 MCM Aluminum (1) 2 AWG-600 MCM	500 lb•in		2	PDF		
PB4-750D1-1	\$73.75				4	Copper (1) 1/0 AWG-750 MCM Aluminum (1) 1/0 AWG-750 MCM	620 lb•in		2	PDF		

Note: Use same conductor type, Copper or Aluminum, per opening. Do not mix conductor type in an opening.

PENNUNION™ Mechanical Connectors

Aluminum Dual-Rated Panelboard Lugs PB Series

Aluminum Dual-Rated Panelboard Lugs - PB Series Dimensions							
Part Number	Figure Number	Approximate Dimensions in [mm]					
		L	W	H	T	C	E
<u>PB2-350S-1</u>	1	2.99 [75.94]	1.00 [25.40]	2.01 [51.05]	0.31 [7.87]	0.39 [9.90]	-
<u>PB2-600D1-1</u>	2	4.94 [125.47]	1.50 [38.10]	2.99 [75.94]	0.76 [19.30]	0.39 [9.90]	1.38 [35.05]
<u>PB2-750D1-1</u>	2	4.94 [125.47]	1.57 [39.87]	2.99 [75.94]	0.76 [19.30]	0.39 [9.90]	1.38 [35.05]
<u>PB3-600D1-1</u>	3	4.94 [125.47]	2.68 [68.07]	2.99 [75.94]	0.76 [19.30]	0.39 [9.90]	1.38 [35.05]
<u>PB3-750D1-1</u>	3	4.94 [125.47]	2.83 [71.88]	2.99 [75.94]	0.76 [19.30]	0.39 [9.90]	1.38 [35.05]
<u>PB4-600D1-1</u>	4	4.94 [125.47]	2.68 [68.07]	2.99 [75.94]	0.76 [19.30]	0.39 [9.90]	1.38 [35.05]
<u>PB4-750D1-1</u>	4	4.94 [125.47]	2.83 [71.88]	2.99 [75.94]	0.76 [19.30]	0.39 [9.90]	1.38 [35.05]

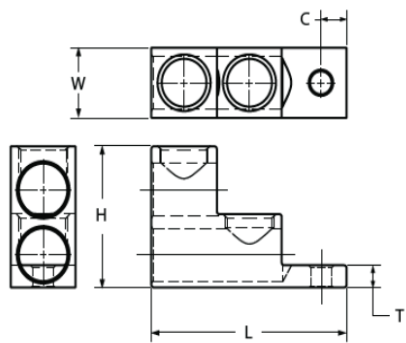


FIGURE 1

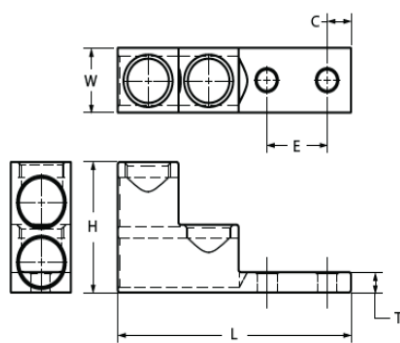


FIGURE 2

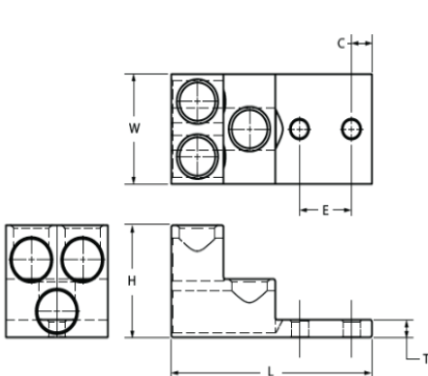


FIGURE 3

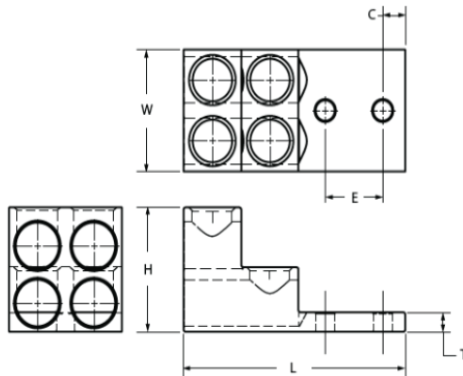


FIGURE 4



Mechanical Connectors

Aluminum Neutral Bars NA Series

Overview

The NA series aluminum neutral bars are manufactured from high strength aluminum alloy and tin plated to maintain a low resistance high strength dual-rated connection. These neutral bars are designed for easy installation, can have up to 20 circuits on a single bar, and can be used in a variety of neutral and grounding applications.

Features

- For use in neutral and grounding applications
- Manufactured from high strength aluminum alloy
- Tin plated
- Screws are made of mild steel and plated
- Dual-rated for copper or aluminum conductors
- UL 467 listed



NA-409-1



Aluminum Neutral Bars - NA Series									
Part Number	Price	Qty	Number of Openings	Number of Circuits	Mounting Hole Position	Conductor Material and Conductor Range	Tightening Torque	Material	Drawing Link
NA-401-1	\$1.00	1	3	2	2	Copper 14-4 AWG stranded 14-8 AWG solid	Copper 14-8 AWG 20 lb•in 6-4 AWG 31 lb•in	Aluminum-tin plated	PDF
NA-402-1	\$1.25		5	4	3				PDF
NA-403-1	\$1.50		6	5	3				PDF
NA-404-1	\$1.75		7	6	4				PDF
NA-405-1	\$1.50		6	4	1 and 4				PDF
NA-406-1	\$1.75		7	5	1 and 7				PDF
NA-407-1	\$1.75		7	5	2 and 6				PDF
NA-408-1	\$2.00		8	6	4 and 7	Aluminum 8-4 AWG stranded 12-8 AWG solid	Aluminum 14-8 AWG 20 lb•in 6-4 AWG 31 lb•in		PDF
NA-409-1	\$2.25		9	7	3 and 7				PDF
NA-410-1	\$2.75		11	9	1 and 11				PDF
NA-411-1	\$3.00		12	10	1 and 12				PDF
NA-412-1	\$3.50		14	12	1 and 14				PDF
NA-413-1	\$4.25		17	15	1 and 17				PDF
NA-414-1	\$5.50		22	20	1 and 22				PDF
NA-416-1	\$4.25	12	10	3 and 11	Aluminum 8-2 AWG stranded 12-8 AWG solid	Aluminum 12-10 AWG 35 lb•in 8 AWG 40 lb•in 6-4 AWG 45 lb•in 2 AWG 50 lb•in	PDF		
NA-417-1	\$3.25	3	2	2	Copper 14-2/0 AWG stranded 14-8 AWG solid	Copper 14-10 AWG 35 lb•in 8-2/0 AWG 120 lb•in	PDF		
NA-418-1	\$5.50	5	3	2 and 4			PDF		
NA-419-1	\$9.00	8	6	1 and 8	Aluminum 8-2/0 AWG stranded 12-8 AWG solid	Aluminum 14-10 AWG 35 lb•in 8 AWG 50 lb•in 6-2/0 AWG 120 lb•in	PDF		

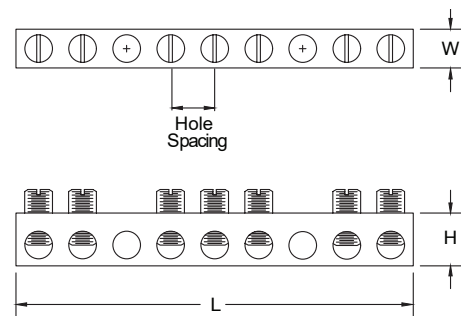
Note: Use same conductor type, Copper or Aluminum, per opening. Do not mix conductor type in an opening.



Mechanical Connectors

Aluminum Neutral Bars NA Series

Aluminum Neutral Bars - NA Series Dimensions				
Part Number	Approximate Dimensions in [mm]			Hole Spacing
	L	W	H	
<u>NA-401-1</u>	0.95 [24.13]	0.33 [8.38]	0.44 [11.17]	0.31 [7.87]
<u>NA-402-1</u>	1.57 [39.87]	0.33 [8.38]	0.44 [11.17]	0.31 [7.87]
<u>NA-403-1</u>	1.88 [47.75]	0.33 [8.38]	0.44 [11.17]	0.31 [7.87]
<u>NA-404-1</u>	2.25 [57.15]	0.33 [8.38]	0.44 [11.17]	0.31 [7.87]
<u>NA-405-1</u>	1.88 [47.75]	0.33 [8.38]	0.44 [11.17]	0.31 [7.87]
<u>NA-406-1</u>	2.25 [57.15]	0.33 [8.38]	0.44 [11.17]	0.31 [7.87]
<u>NA-407-1</u>	2.25 [57.15]	0.33 [8.38]	0.44 [11.17]	0.31 [7.87]
<u>NA-408-1</u>	2.56 [65.02]	0.33 [8.38]	0.44 [11.17]	0.31 [7.87]
<u>NA-409-1</u>	2.87 [72.89]	0.33 [8.38]	0.44 [11.17]	0.31 [7.87]
<u>NA-410-1</u>	3.50 [88.90]	0.33 [8.38]	0.44 [11.17]	0.31 [7.87]
<u>NA-411-1</u>	3.81 [96.77]	0.33 [8.38]	0.44 [11.17]	0.31 [7.87]
<u>NA-412-1</u>	4.43 [112.52]	0.33 [8.38]	0.44 [11.17]	0.31 [7.87]
<u>NA-413-1</u>	5.37 [136.39]	0.33 [8.38]	0.44 [11.17]	0.31 [7.87]
<u>NA-414-1</u>	6.93 [176.02]	0.33 [8.38]	0.44 [11.17]	0.31 [7.87]
<u>NA-416-1</u>	4.83 [122.68]	0.38 [9.65]	0.50 [12.70]	0.40 [10.16]
<u>NA-417-1</u>	1.75 [44.45]	0.63 [16.00]	0.75 [19.05]	0.60 [15.24]
<u>NA-418-1</u>	2.95 [74.93]	0.63 [16.00]	0.75 [19.05]	0.60 [15.24]
<u>NA-419-1</u>	4.75 [120.65]	0.63 [16.00]	0.75 [19.05]	0.60 [15.24]





Mechanical Connectors

Copper Neutral Bars NC Series

Overview

The NC series copper neutral bars are manufactured from high strength copper. These neutral bars are designed for easy installation, can have up to 13 circuits on a single bar and can be used in a variety of neutral and grounding applications.

Features

- Manufactured from high strength copper
- For use in neutral and grounding applications
- Use with copper conductors only
- Screws are made of mild steel and plated
- UL 467 listed



NC-420-1



Copper Neutral Bars - NC Series									
Part Number	Price	Qty	Number of Openings	Number of Circuits	Mounting Hole Position	Conductor Material and Conductor Range	Tightening Torque	Material	Drawing Link
NC-420-1	\$4.00	1	6	4	1 and 6	Copper 14-4 AWG stranded 14-8 AWG solid	Copper 14-8 AWG 20 lb•in 6-4 AWG 31 lb•in	Copper	PDF
NC-421-1	\$4.50		7	5	1 and 7				PDF
NC-422-1	\$5.25		8	6	1 and 8				PDF
NC-423-1	\$9.00		14	12	1 and 14				PDF
NC-424-1	\$9.75		15	13	3 and 13				PDF
NC-425-1	\$9.75		15	13	6 and 11				PDF
NC-428-1	\$9.00		8	6	2 and 7	Copper 14-2 AWG stranded 14-8 AWG solid	Copper 14-8 AWG 20 lb•in 6-4 AWG 45 lb•in 2 AWG 50 lb•in		PDF

Copper Neutral Bars - NC Series Dimensions				
Part Number	Approximate Dimensions in [mm]			Hole Spacing
	L	W	H	
NC-420-1	1.94 [49.27]	0.33 [8.38]	0.44 [11.17]	0.31 [7.87]
NC-421-1	2.25 [57.15]	0.33 [8.38]	0.44 [11.17]	0.31 [7.87]
NC-422-1	2.56 [65.02]	0.33 [8.38]	0.44 [11.17]	0.31 [7.87]
NC-423-1	4.43 [112.52]	0.33 [8.38]	0.44 [11.17]	0.31 [7.87]
NC-424-1	4.74 [120.39]	0.33 [8.38]	0.44 [11.17]	0.31 [7.87]
NC-425-1	4.74 [120.39]	0.33 [8.38]	0.44 [11.17]	0.31 [7.87]
NC-428-1	3.25 [82.55]	0.38 [9.65]	0.50 [12.70]	0.40 [10.16]

