

AUTOMATIONDIRECT.com

# Motion: Planetary and Strain Wave Gearbox



Suregear

Up-to-date price list:  
[www.automationdirect.com/pricelist](http://www.automationdirect.com/pricelist)

FREE Technical Support:  
[www.automationdirect.com/support](http://www.automationdirect.com/support)

FREE Videos:  
[www.automationdirect.com/videos](http://www.automationdirect.com/videos)

FREE Documentation:  
[www.automationdirect.com/documentation](http://www.automationdirect.com/documentation)

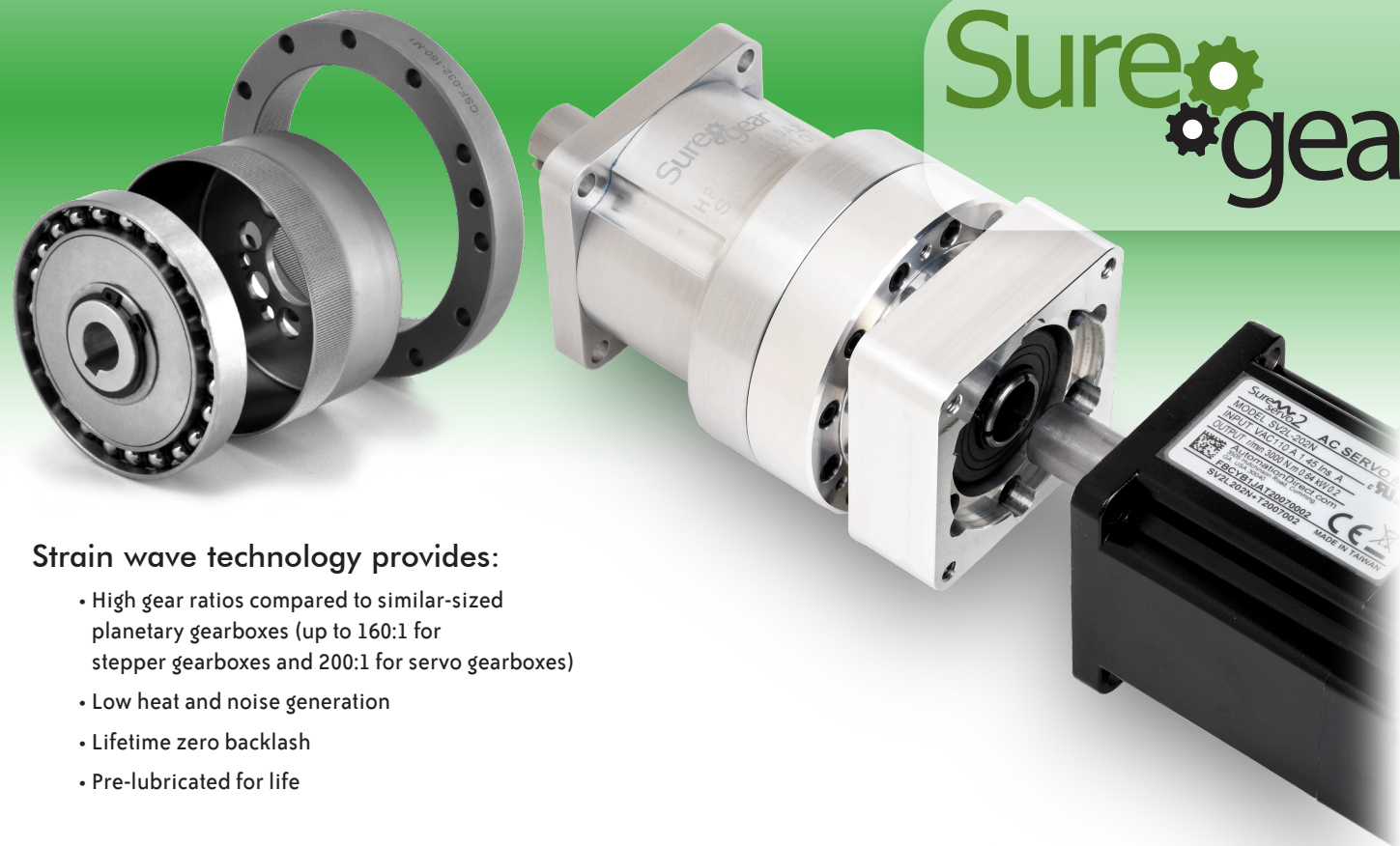
FREE CAD drawings:  
[www.automationdirect.com/cad](http://www.automationdirect.com/cad)





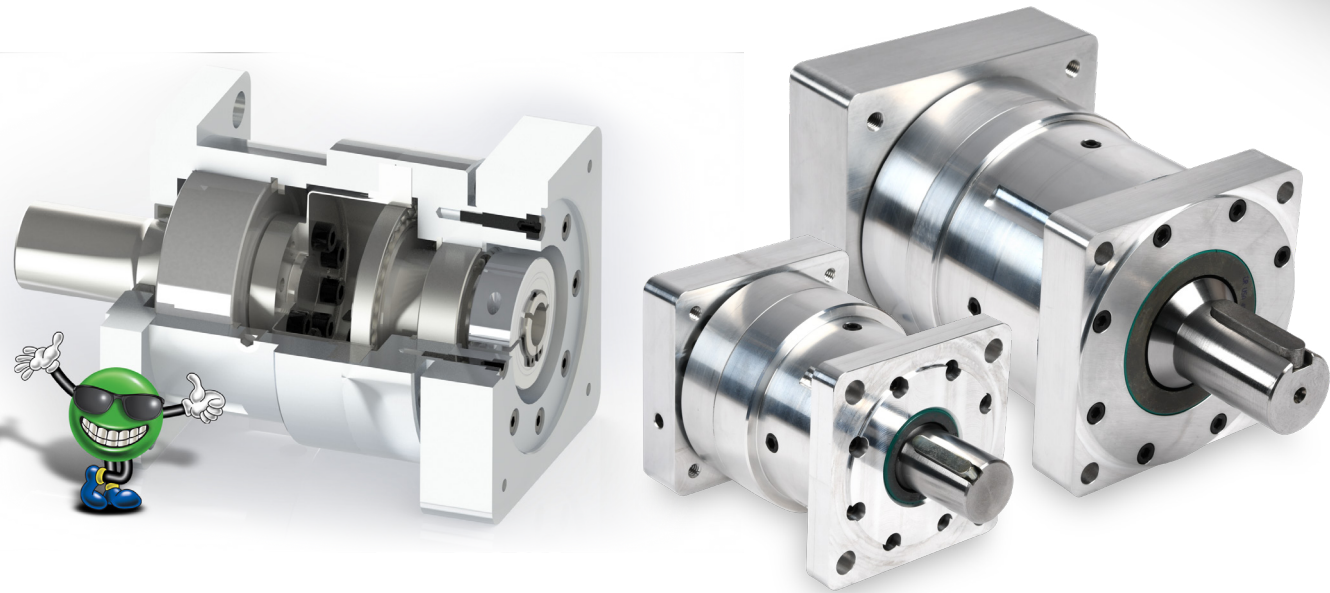
# SureGear High-Precision Inline Strain Wave Gearboxes

Strain wave gearboxes offer many advantages over planetary and helical gearboxes. Strain wave technology allows for a higher gear ratio and efficiency in an inline form-factor and smaller size. Many different gear ratios and input flange sizes are available and are designed to work with SureServo2 and SureStep motors.



### Strain wave technology provides:

- High gear ratios compared to similar-sized planetary gearboxes (up to 160:1 for stepper gearboxes and 200:1 for servo gearboxes)
- Low heat and noise generation
- Lifetime zero backlash
- Pre-lubricated for life



# NEMA Planetary Gearboxes

The SureGear PGCN series easily mates to SureStep motors, and other NEMA frame motors. Everything you need to mount your SureStep motor is included!

It is the perfect solution for applications such as packaging, and other motion control applications material handling, pick and place, automation, requiring a NEMA input/output interface.

## Precision Gearboxes for Stepper Motors

15 models, five gear ratios available in NEMA 17, 23 and 34 frame sizes



Tough on the outside, precision quality on the inside

