



Linear Motion



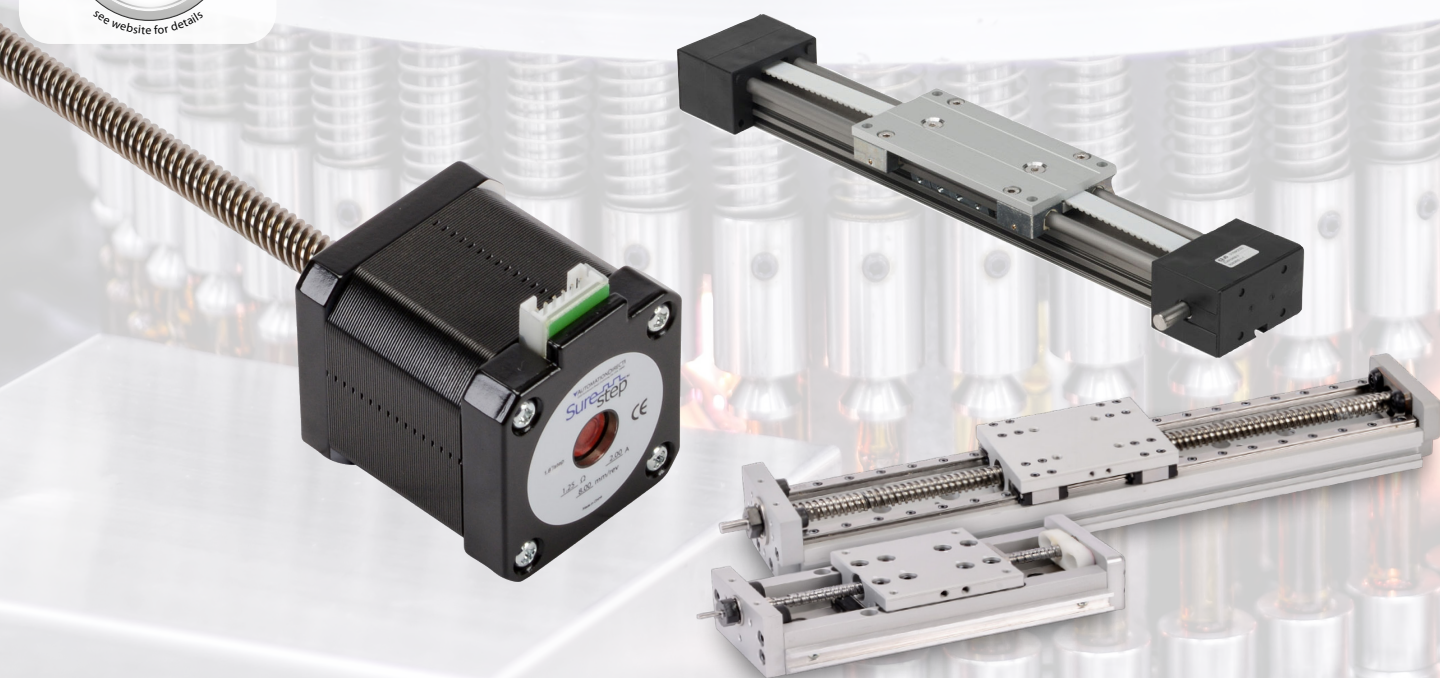
Up-to-date price list:
www.automationdirect.com/pricelist

FREE Technical Support:
www.automationdirect.com/support


FREE Videos:
www.automationdirect.com/videos

FREE Documentation:
www.automationdirect.com/documentation

FREE CAD drawings:
www.automationdirect.com/cad



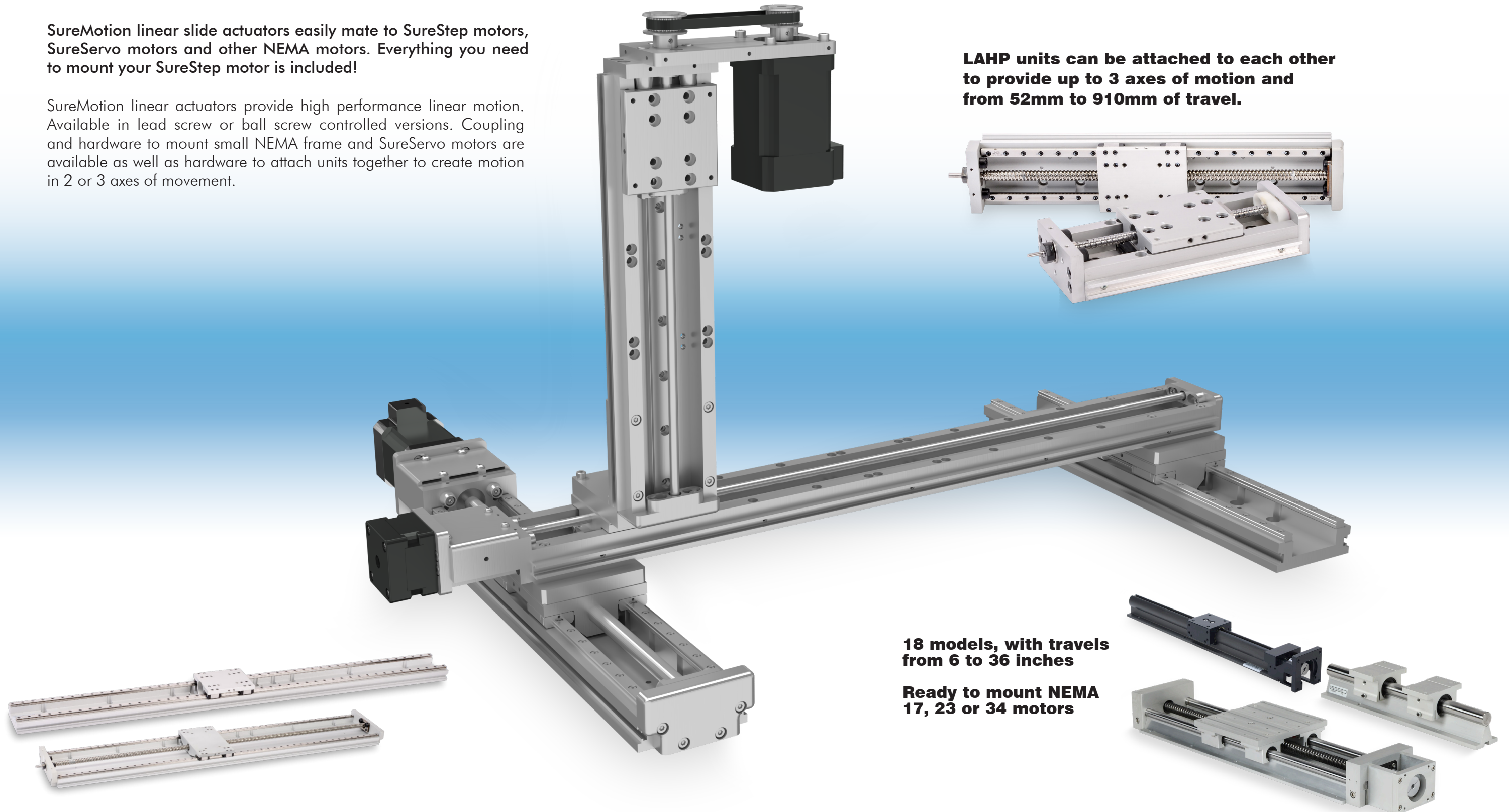
Linear Motion Slides and Components to Create up to 3 Axes of Motion

Sure  **motion**

SureMotion linear slide actuators easily mate to SureStep motors, SureServo motors and other NEMA motors. Everything you need to mount your SureStep motor is included!

SureMotion linear actuators provide high performance linear motion. Available in lead screw or ball screw controlled versions. Coupling and hardware to mount small NEMA frame and SureServo motors are available as well as hardware to attach units together to create motion in 2 or 3 axes of movement.

LAHP units can be attached to each other to provide up to 3 axes of motion and from 52mm to 910mm of travel.

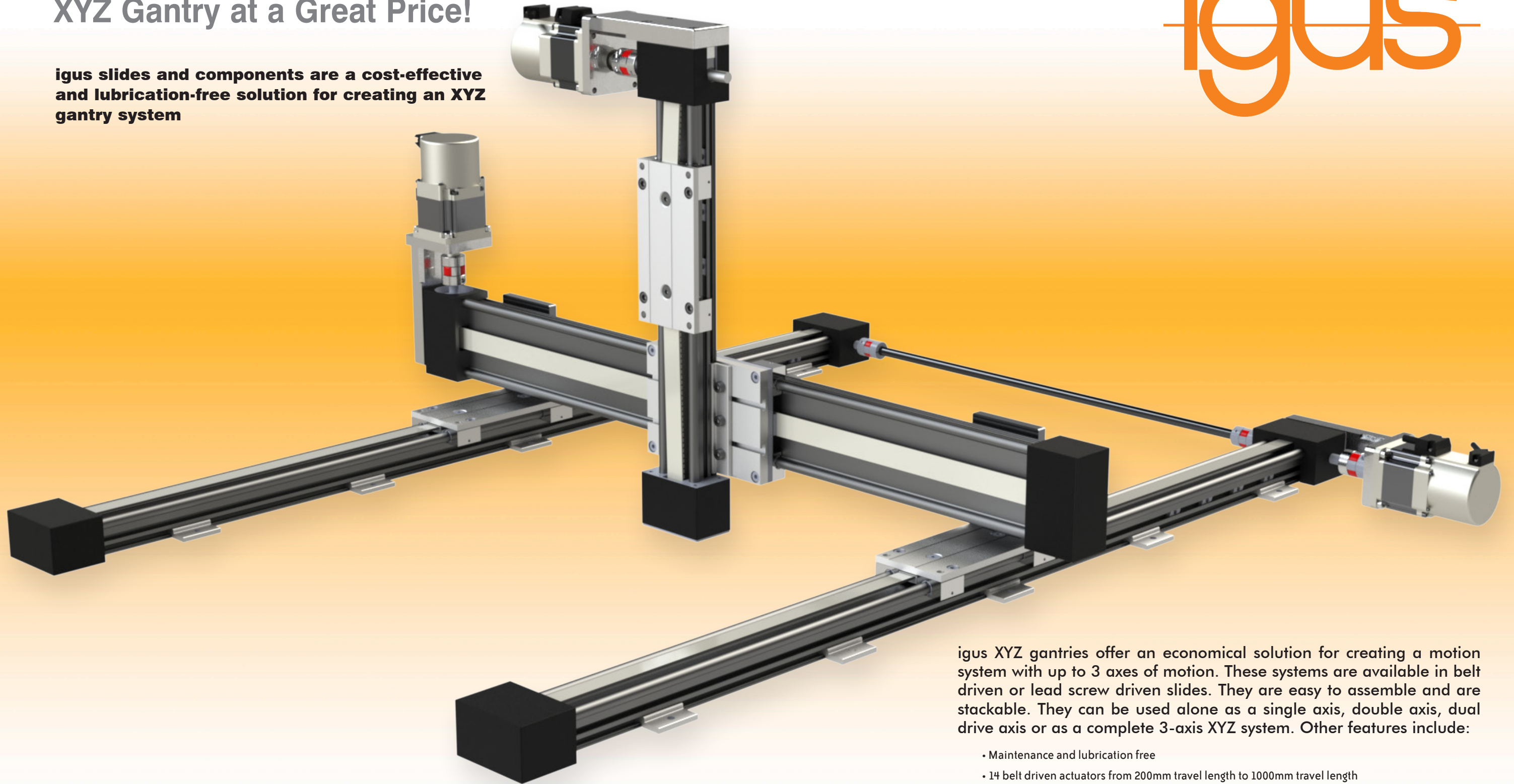


18 models, with travels from 6 to 36 inches

Ready to mount NEMA 17, 23 or 34 motors

igus Linear Slides and Components can be used to create an XYZ Gantry at a Great Price!

igus slides and components are a cost-effective and lubrication-free solution for creating an XYZ gantry system



igus XYZ gantries offer an economical solution for creating a motion system with up to 3 axes of motion. These systems are available in belt driven or lead screw driven slides. They are easy to assemble and are stackable. They can be used alone as a single axis, double axis, dual drive axis or as a complete 3-axis XYZ system. Other features include:

- Maintenance and lubrication free
- 14 belt driven actuators from 200mm travel length to 1000mm travel length
- 13 lead screw driven actuators from 100mm travel length to 750mm travel length
- Rails made from durable 6061-T6 aluminum with hard anodized finish
- Motor mounts for SureServo and SureStep motors
- T-slots in rails allow switches and sensors to be easily installed

SureStep[®] Linear Actuators

PITCH VS LEAD

"Pitch" refers to the number of threads per inch of a screw, while "lead" indicates the amount of travel per revolution. Lead is typically used to specify ball screws.

Pitch and lead values are equivalent with single start screws.



For multiple start screws: lead equals pitch multiplied by the number of starts.



Multi-start screws have increased bearing surface for extra thrust.



Optional screw end machining: bearing journal and groove for snap ring. Ready to mount!

Triangular flange nut (standard) fits confined spaces. Optional circular nut also available

Nine standard "leads" in stock: 1.25mm/rev, 3mm/rev, 6mm/rev, 8mm/rev, 10.2mm/rev, 0.25in/rev, 0.5in/rev, and 1.0in/rev:

- Small leads provide high thrust
- Large leads allow high speed

Three standard screw lengths in stock: 6-in, 9-in, & 12-in

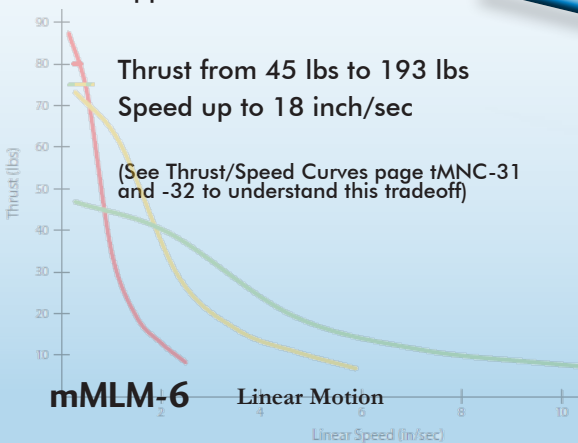
Three standard motor cable lengths in stock: 6-ft, 10-ft and 20-ft

Wide variety of actuators in stock for immediate delivery!

NEMA17 and NEMA23 motor sizes in multiple stack lengths to match the thrust & speed of your application.

Thrust from 45 lbs to 193 lbs
Speed up to 18 inch/sec

(See Thrust/Speed Curves page tMNC-31 and -32 to understand this tradeoff)



Need Feedback? Optional rear motor shaft and threaded holes for encoder mounting