

AUTOMATIONDIRECT.com

C-more[®] micro Operator Interface



Up-to-date price list:
www.automationdirect.com/pricelist

FREE Technical Support:
www.automationdirect.com/support

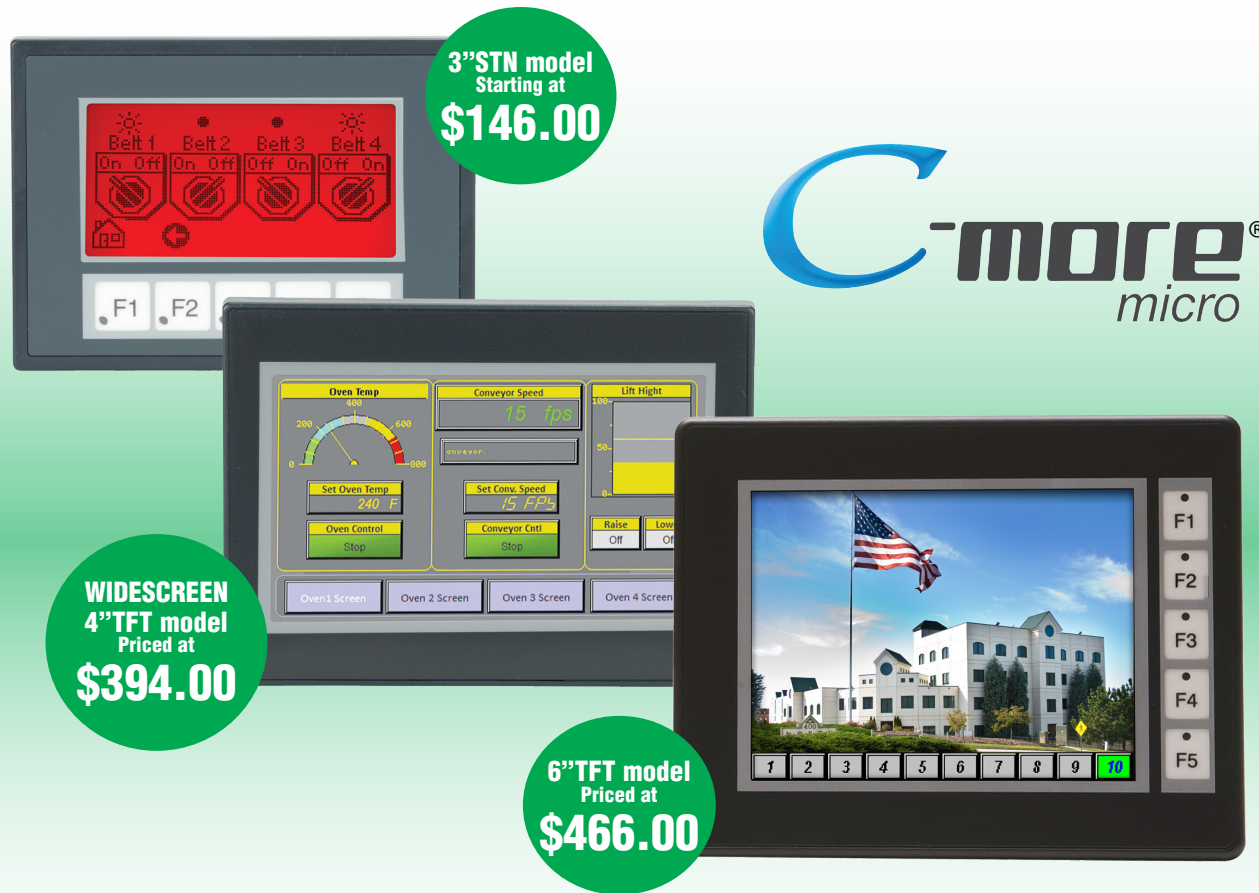
FREE Videos:
www.automationdirect.com/videos

FREE Documentation:
www.automationdirect.com/documentation

FREE CAD drawings:
www.automationdirect.com/cad



Micro panels...MEGA value!



3"STN model
Starting at
\$146.00

WIDESCREEN
4" TFT model
Priced at
\$394.00

6" TFT model
Priced at
\$466.00

C-more
micro

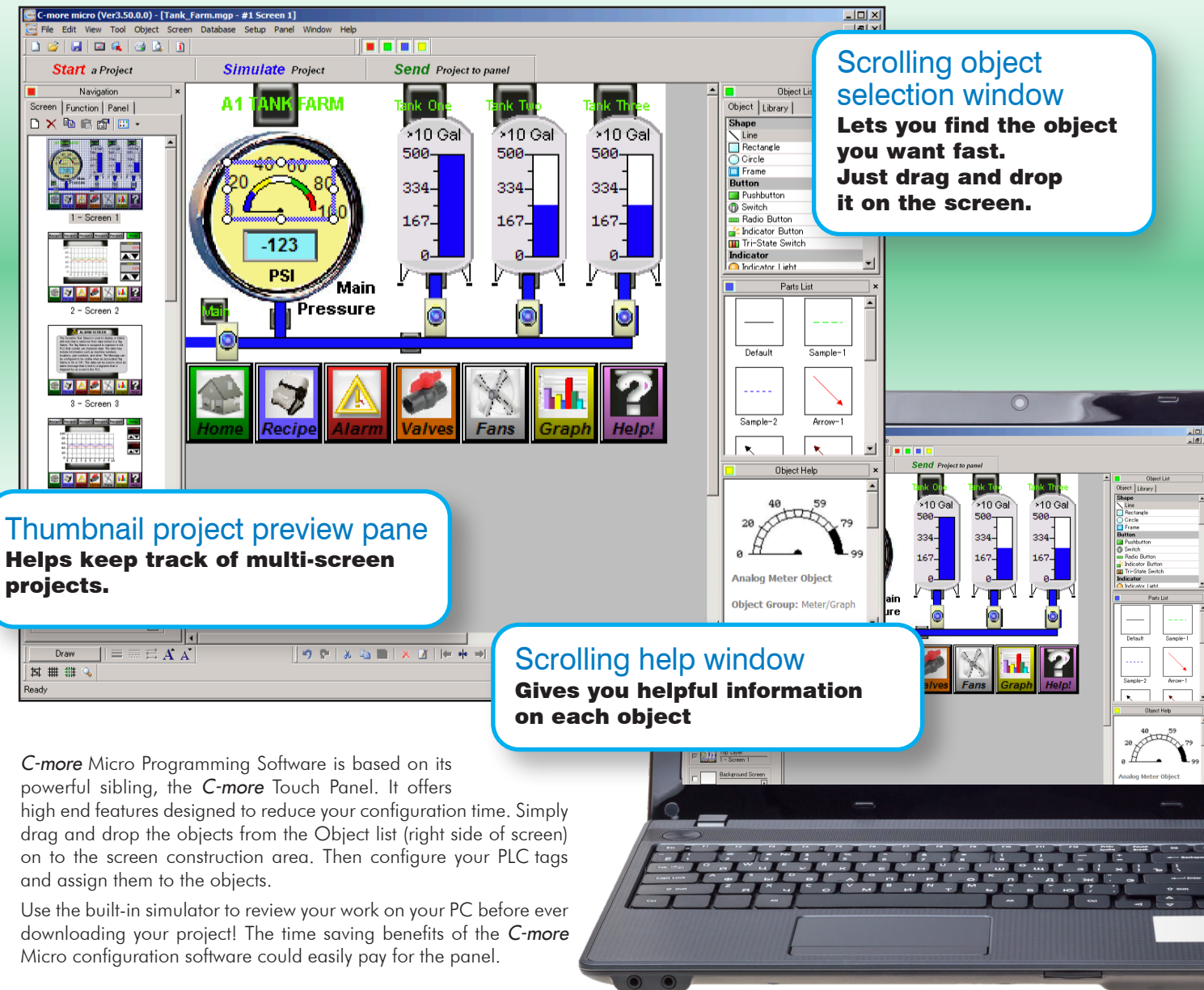
FREE Configuration Software with Simulator

Built-in project simulator

- Runs your project on your PC
- Test all of your screens before downloading
- Time savings pays for the panel!

Built-in user object/screen libraries

Save time by re-using your custom objects and screens.



Scrolling object selection window
Lets you find the object you want fast.
Just drag and drop it on the screen.

Thumbnail project preview pane
Helps keep track of multi-screen projects.

Scrolling help window
Gives you helpful information on each object

Do more for LESS with C-more Micro Panels!

C-more Micro panels are one of the most popular and reliable, value-packed operator interfaces in the industrial market today. No matter the budget or system size, we have a C-more Micro operator panel for the job. And all of our panels come with FREE programming software that includes a project simulator and many other time saving features. You'll always get the biggest bang for your buck with C-more Micro.

The 3-inch STN monochrome versions offer twelve selectable background colors that allow you to use color to convey meaning.

The 4-inch and 6-inch TFT full color versions offer up to 32,767 colors for more vibrant and colorful project screens.

Micro touch panel and non-touch panel versions available

- The 3-inch cost-conscious panels display standard or high contrast STN monochrome graphics with 12 selectable background colors
- 32K color TFT displays are available in 4-inch and 6-inch models
- Ethernet communication built in on 3 and 4-inch EA3 models, optional Ethernet communications module (EA-ECOM) available for 6-inch EA3 models
- FREE programming software with simulator
- Full 2-year product warranty



C-more Micro Programming Software is based on its powerful sibling, the C-more Touch Panel. It offers high end features designed to reduce your configuration time. Simply drag and drop the objects from the Object list (right side of screen) on to the screen construction area. Then configure your PLC tags and assign them to the objects.

Use the built-in simulator to review your work on your PC before ever downloading your project! The time saving benefits of the C-more Micro configuration software could easily pay for the panel.

Check out www.C-moreMicro.com for a demo.

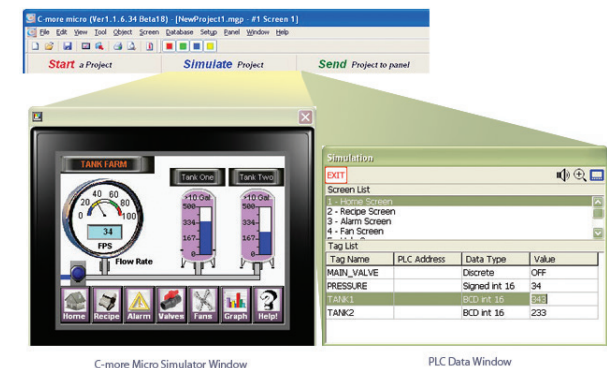
Learn more! Go to:
C-moreMicro.automationdirect.com
for detailed specifications, a virtual tour of the product, programming examples, newest communication drivers...

C-more Micro Productivity Tools

Built-in Project Simulator

The simulator is a real productivity booster that saves hours of trial-and-error programming and testing, with no need for a panel or controller.

The simulator pops up on your PC screen, along with the simulated controller Data Window. Use your mouse to activate objects on the simulated project screens while monitoring the simulated controller values in the data window.



Build and Save Custom Objects

Store your objects in the library for fast and easy re-use.

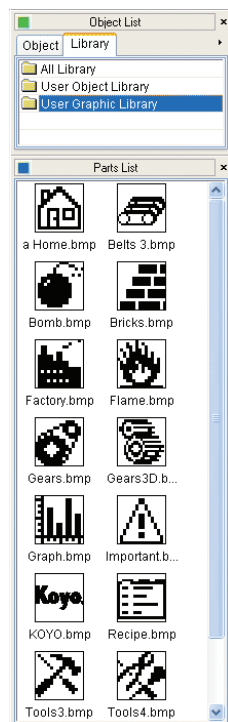
Once you've built a custom object, just right-click on it and select "Object -> Library"

You're then prompted to give your object a name, and you can choose whether to save the PLC tags with the object.

Drag and drop objects from the library onto the workspace.

It's easy to re-use an object. Just drag it from the library and drop it on the desired screen. Then double click it if you want to edit the tags or other options.

Download more objects and graphics from our online library at www.c-moremicro.com



Overlapping Objects

Our customers loved overlapping objects on the larger C-more panels, and we knew you would expect the same capabilities with C-more Micro. Here are some examples of overlapping objects:

Several "Text" objects and a "Bar Graph" object overlapped on a "Rectangle" object.

"Dynamic Bitmap" object overlapped on an "Indicator Light" object



"Static Bitmap" object overlapped on a "Screen Change Pushbutton" object

Lots of memory lets you get creative

Screens

While many text panels are limited to 256 or fewer messages, C-more Micro allows up to 999 screens for every project. Create all the screens you need to control your machine or process.

Memory

Ample user memory allows tons of objects and graphs on your screens.

- Pictures and icons convey information faster than text
- Use bar graphs and indicator graphics to enhance comprehension



Note: Keep in mind that depending on the complexity of your screens, the limiting factor could be the 999 addressable screens or the panel's memory.

It's easy to track the size of your project:

When you download a project to a C-more Micro panel, the download dialog box shows you the current project size.

- If your project is large you may want to download only the Runtime File and the controller driver file, but not the entire Project File.
- If you download the Project File, you will be able to upload the entire project from the panel at a later date.

Download the Software!

C-more Micro Programming Software can be downloaded at no charge from AutomationDirect.com, or a USB version may be purchased for \$31.50 (EA-MG-PGMSW). A USB port on your PC is required to connect to the C-more Micro panel.

****This software can only be used to program the C-more Micro panels, not the full-size C-more touch panels.**

C-more Micro Productivity Tools

Alarm Control Setup

The Alarm Control Setup feature makes configuring alarms fast and easy. Use a controller tag to activate up to 16 alarm conditions with the built-in Alarm Control feature. Choose from:

- Beep
- LED Blink
- Change Backlight Color
- Blink Selectable Colors
- Show a Banner Message

Event		Action				
No.	Alarm Notification	Beep	LED Blink	Backlight	Blink	Banner Message
01	[PUMP1TEMP] = 1	<input checked="" type="checkbox"/> ON	<input checked="" type="checkbox"/> F1	<input checked="" type="checkbox"/> Current	<input checked="" type="checkbox"/> Yellow	<input checked="" type="checkbox"/> Pump One Alarm
02	[PUMP2TEMP] = 1	<input checked="" type="checkbox"/> ON	<input checked="" type="checkbox"/> F1	<input type="checkbox"/>	<input type="checkbox"/>	<input checked="" type="checkbox"/> Pump Two Alarm
03	[PUMP3TEMP] = 0	<input checked="" type="checkbox"/> ON	<input checked="" type="checkbox"/> F1	<input type="checkbox"/>	<input type="checkbox"/>	<input checked="" type="checkbox"/> Pump Three Alarm
04	[WASHTANK1_OVR]...	<input checked="" type="checkbox"/> ON	<input type="checkbox"/>	<input type="checkbox"/>	<input type="checkbox"/>	<input checked="" type="checkbox"/> Washtank One Overflow
05	[WASHTANK2_OVR]...	<input type="checkbox"/> OFF	<input type="checkbox"/>	<input type="checkbox"/>	<input type="checkbox"/>	<input checked="" type="checkbox"/> Washtank Two Overflow
06	[WASHTANK1_LO...]...	<input type="checkbox"/> OFF	<input type="checkbox"/>	<input checked="" type="checkbox"/> Current	<input checked="" type="checkbox"/> Red	<input checked="" type="checkbox"/> Washtank One Low Level
07	[WASHTANK2_LO...]...	<input type="checkbox"/> OFF	<input type="checkbox"/>	<input checked="" type="checkbox"/> Current	<input checked="" type="checkbox"/> Red	<input checked="" type="checkbox"/> Washtank Two Low Level
08	[VALVE1_LOWAIR]...	<input type="checkbox"/> OFF	<input type="checkbox"/>	<input type="checkbox"/>	<input type="checkbox"/>	<input checked="" type="checkbox"/> Valve One Low Air Pressure Level
09	[VALVE2_LOWAIR]...	<input type="checkbox"/> OFF	<input type="checkbox"/>	<input type="checkbox"/>	<input type="checkbox"/>	<input checked="" type="checkbox"/> Valve Two Low Air Pressure
10						
11						
12						
13						
14						
15						
16						

Use the built-in alarm feature above or create a simple Alarm Screen (right) in conjunction with the message database to display HUNDREDS of different alarm messages.

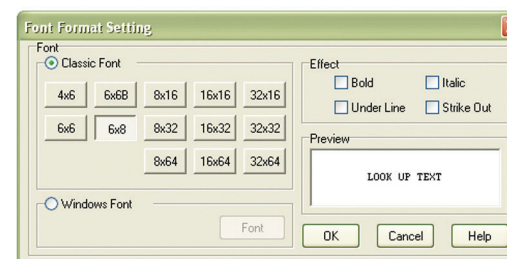
Look-up Text Object



Use any font on your PC

C-more Micro offers 10 built-in fixed-width "Classic" fonts and allows the use of any Windows fonts present on the programming computer.

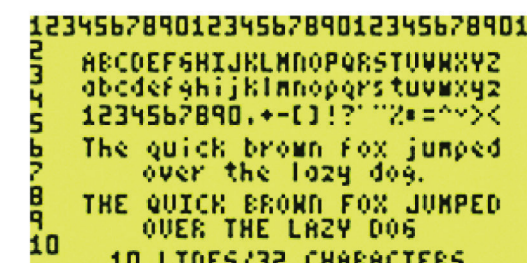
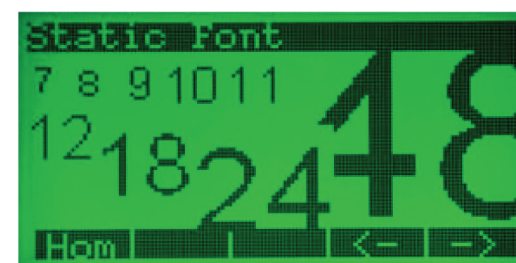
- Fixed-width fonts allow maximum lines and characters
- Windows fonts can be scaled to many sizes

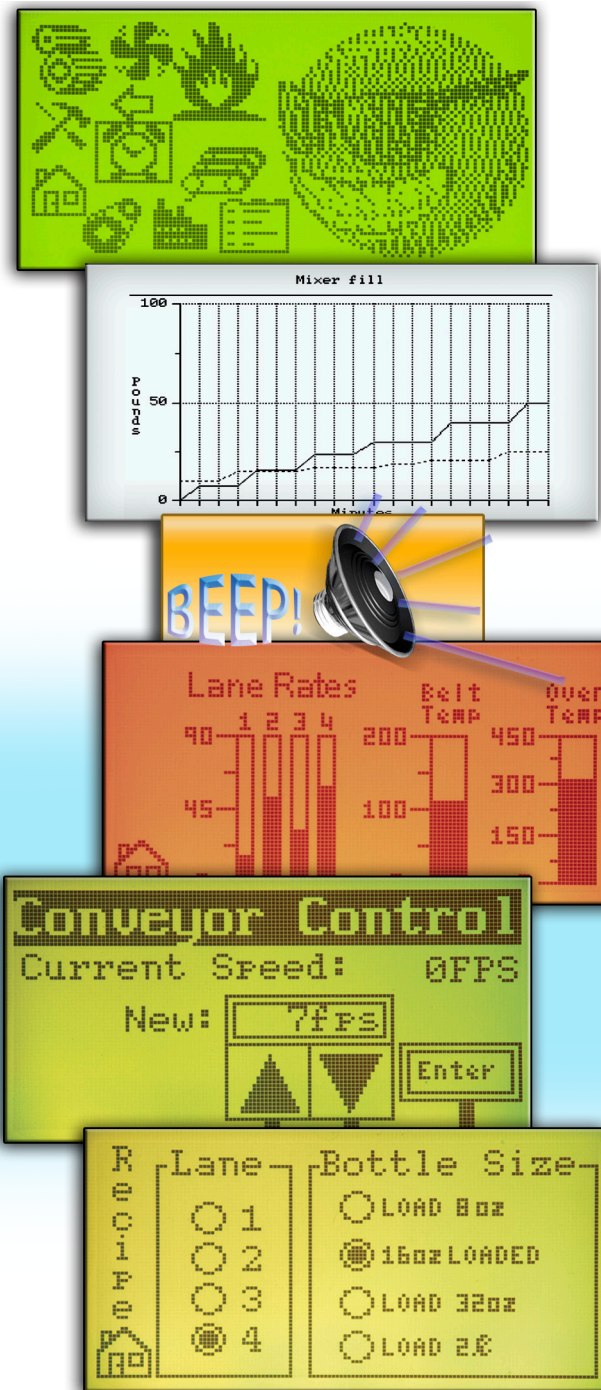


Windows fonts can be sized with their familiar "point" values.



For 3-inch units, the "4x6" fixed font allows a maximum of 32 characters per line and 10 lines for static text. The 6-inch units support up to 53 lines with 60 characters per line in portrait mode, or 40 lines with 80 characters per line in landscape mode.





Bitmap graphics

- Use bitmap images of pushbuttons, switches, indicators, or your company logo
- Use our library of bitmaps
- Create your own library of bitmaps

Real-time graph

- Each pen displays the value of a single PLC memory location. Values are refreshed by either time or a trigger tag.
- One or two pens can be displayed on the STN models
- Up to eight pens can be displayed on the TFT models
- Up to 24 values can be displayed for each pen

Controlled beep

- Beep to indicate an alarm
- Beep for a special message
- Beep to verify when button is pressed

Bar graphs

- Vertical, horizontal, thin, wide, multiple
- Combine with a numeric display for digital readout

Data entry

- Pop-up numeric keypad on the screen
- Increment/Decrement a value by touching arrows
- Add an optional keypad bezel

Recipes

Each recipe button transfers up to 99 values from PLC source registers to PLC destination registers and/or from the recipe table to PLC destination registers.

Change background colors

The screen colors are programmable! Use them to convey meaning - see a red alarm screen from across the room, or use a yellow screen as a caution.

All 3in STN models support various user controlled backlight colors that can be used to get the operators attention.

These colors will vary based on the model:

White, Green, Red, Amber, Lime, Yellow, Pink, Emerald

TFT models allow 32K colors to flash for the background.

Alarm feature

C-more Micro has an Alarm action that can control:

- Backlight color change/flash
 - Function Key LED flash
 - Beep activation
 - Custom alarm banner display
- Up to 16 configurable alarm actions



Support you can rely on!

Our HMI's have been an important part of the automation industry for over 10 years. And whether you're purchasing your first C-more panel or you're an existing customer, you can count us to offer the support you need long into the future.

What our customers think...

C-more Micro family average review scores from our web store:

[Read Reviews](#) [Write a Review](#)

Averages for C-more Micro-Graphic Panels

Overall Score (4.6)
(99 reviews)

Quality:

Ease of Use:

Value:



"I have used the 3" C-More Micro in my products for over 4 years without any issues. We build pre packaged automation equipment for the oil and gas industry and our products are located in areas with a wide range of environments. We have over 20 of these HMI's that have stood the test of time and the elements."

Francis in WICHITA, KS



"Great product. I bought it for a simple applications of displaying error messages from the PLC but turned out to be more useful than just that and ended up adding more functionality and replacing physical buttons for in screen ones, passwords, and even numeric inputs to modify timer values were added. Definitely a versatile and great value product."

Juansystem05 in COLUMBUS, NM



"I have used the EA3-T6CL with a D0-06DR PLC for several different projects and have been very pleased with the quality and the ease of use of the software. I will definitely be buying more in the future."

Rob in EASTON, PA



NEW!

EA3 Reduced Models

New EA3 Series starting at **\$146.00**

EA3-S3ML-RN \$146.00

- Non-touch
- NEMA1 indoor rating -ships without gasket. Optional gasket can be purchased for NEMA4 indoor rating
- One RJ12 serial port for programming and PLC connection
- Supports only AutomationDirect/Modbus PLC protocols
- No expansion/option module support

EA3-S3ML-R \$208.00

- Touch screen
- NEMA4, 4x indoor rating
- One RJ12 serial port for programming and PLC connection
- Supports only AutomationDirect/Modbus PLC protocols
- No expansion/option module support



EA3-S3ML

3-inch STN Monochrome Panel

Ethernet-ready panel for only **\$280.00**

- Touch screen
- Built-in Ethernet port
- Two built-in serial ports
- Micro-USB programming port
- 5 Function keys with LED indicators
- UL, cUL, CE approvals
- NEMA 4, 4x indoor ratings

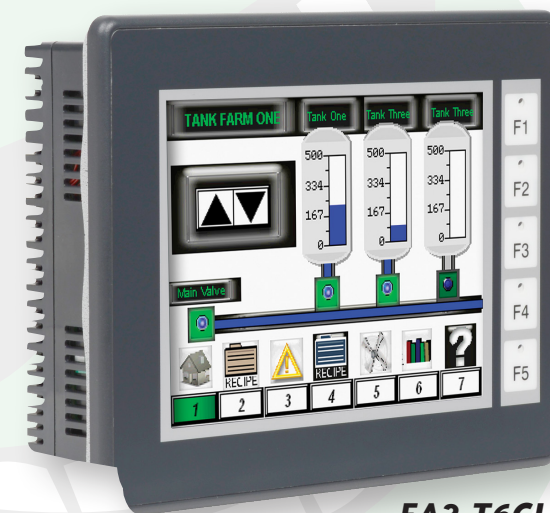


EA3-T4CL

4-inch TFT WIDESCREEN Full Color Panel

Ethernet-ready widescreen panel for only **\$394.00**

- Touch screen
- Built-in Ethernet port
- Two built-in serial ports
- Micro-USB programming port
- Supports Portrait and Landscape modes
- UL, cUL, CE approvals
- NEMA 4, 4x indoor ratings



EA3-T6CL

6-inch TFT Full Color Panel

Ethernet-capable, priced at **\$466.00**

- Five user-defined function keys, each key with a user-defined red LED indicator
- UL-rated for use on a flat surface of Type 1, 4X enclosure (for indoor use only)
- Powered from a Class 2, 12-24 VDC power supply or through the USB port when programming
- EA-ECOM module allows Ethernet connection



Add Ethernet to your 6-inch panel for only **\$73.00** with the EA-ECOM module

The EA-ECOM module adds one Ethernet RJ45 Port for panel configuration and PLC communications. Simply connect the module to the back of your EA3 C-more Micro and secure it with the supplied screws. The EA-ECOM does not require an external power supply.

- Faster project download speed
- Faster firmware update speed
- Power supplied from expansion port
- Connectivity to existing Ethernet networks



The EA-ECOM adds support for the following Ethernet protocols:

- AutomationDirect ECOM Ethernet
- AutomationDirect CLICK Ethernet
- AutomationDirect Do-More Ethernet
- AutomationDirect Productivity Ethernet
- Modbus TCP
- Allen-Bradley EtherNet/IP Client (MicroLogix 1100/1400)
- Allen-Bradley EtherNet/IP Client (SLC5/05/ENI Adapter)

C-more Micro EA3 Series Panels

	3-inch STN Monochrome Models			4-inch Widescreen TFT Color Models	6-inch TFT Color Models
	EA3-S3ML-RN	EA3-S3ML-R	EA3-S3ML	EA3-T4CL	EA3-T6CL
NEMA Rating	NEMA 250 Type 1 indoor use only. Optional gasket EA-MG-S3ML-GSK can be purchased for NEMA 250 Type 4/4X (indoor use only) rating.			NEMA 250 Type 4/4X (indoor use only)	
Touch Screen	NO			YES	
Display Resolution	128 x 64 pixel			480 x 272 pixel widescreen	320 x 240 pixel
USB Programming Port	NO (Use serial port with EA-MG-PGM-CBL)			(1) USB (Port 1: USB Type Micro-B)	(1) USB (Port 1: USB Type B)
Serial Port	(1) RJ12 Serial			(2) Serial (RJ12 and DSUB15)	
Ethernet Port	NO			(1) 10/100 Mbps Built In	Ethernet Option Module (EA-ECOM)
Protocols	Supports only Automationdirect protocols and Modbus RTU			Supports complete C-more micro protocol list (see specs)	
User Project Memory	1MB	3MB		14MB	6MB
Portrait Mode	NO			YES	
Colors	Monochrome; backlight can be configured per screen and/or per alarm with one of 12 colors. See specs			32,768 colors	