

AUTOMATIONDIRECT.com



Other HMI

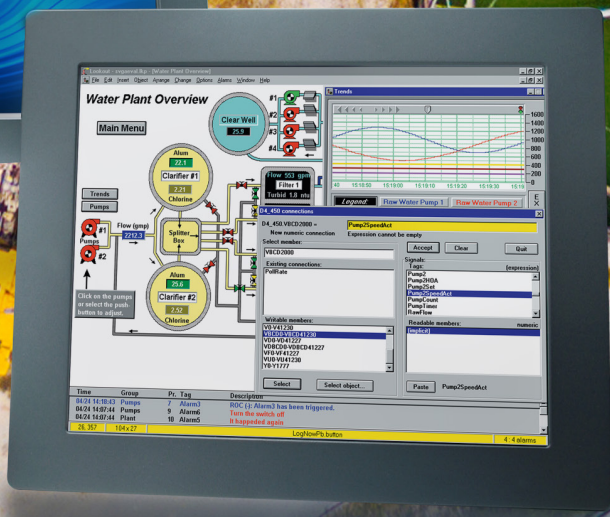
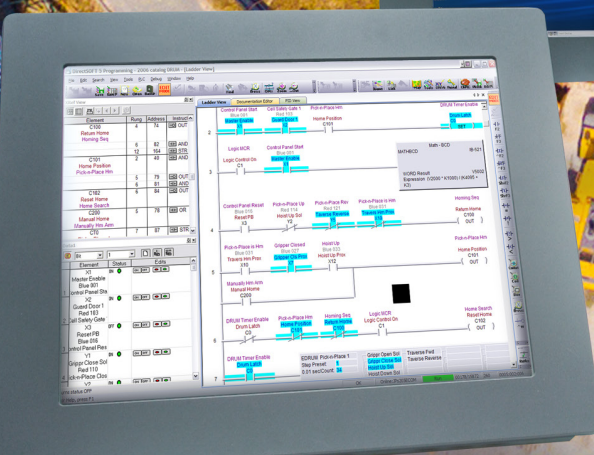
Up-to-date price list:
www.automationdirect.com/pricelist

FREE Technical Support:
www.automationdirect.com/support

FREE Videos:
www.automationdirect.com/videos

FREE Documentation:
www.automationdirect.com/documentation

FREE CAD drawings:
www.automationdirect.com/cad



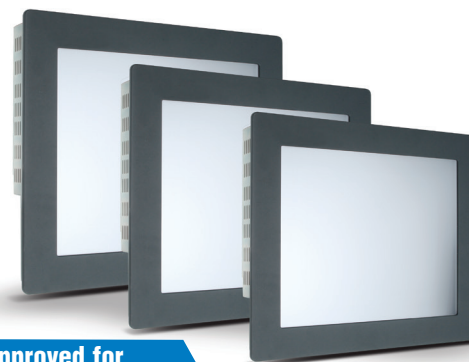
ATLAS™ Industrial Grade LCD Monitors starting at \$1,269.00!



Atlas™ Industrial Grade LCD Monitors

These heavy duty PC monitors offer superb quality at a competitive price. Their compact size and very thin panel mounted depth (less than 2.75") allows them to be used in size restricted projects. And the hazardous locations listing makes them ideal for installation in harsh environments found in many factory automation applications. All sizes are available in non-touch or with a 5-wire analog resistive touchscreens. There are currently three sizes, 15", 17", and 19", in this series.

The ATLAS series includes 15" XGA, 17" SXGA, and 19" SXGA LCD monitors. All models come standard with 100-240 VAC input power supplies and have NEMA 4/4X/12 panel-mountable front bezels. All units provide Analog Video (VGA) and Digital Video Input (DVI) connections and 5-wire analog resistive touchscreens. "T" models supply connection via either USB or RS-232. The entire series is UL/cUL listed and is UL approved for Class I Division 2, Class II Division 2 and Class III hazardous locations.



UL Approved for Class I Division 2 and Class 3 Hazardous Locations
Integrated Power Supply



Features

- Optional non-touch or 5-wire analog resistive touch screen available
- UL 508 and ANSI/ISA 12.12.01 listed for Hazardous Locations: Class I, Division 2, Groups A, B, C, D; Class II, Division 2, Groups F and G and Class III.
- NEMA 4/4X/12 front bezel
- Integral 100-240 VAC power supply
- RS-232 and USB support for touch screen models
- Simplified installation with no studs
- VESA compliant - all modes up to SXGA, 16 million colors
- 2-year warranty

ATM1500
\$1,269.00

ATM1500T (touch)
\$1,523.00



ATM1500 - 15"

- 15" color TFT LCD display
- XGA, 1024 x 768 native resolution
- 16 million colors
- 40,000 hrs backlight Life
- Integral 100-240 VAC power supply
- Simplified installation with no studs
- Thin design - only 2.4" behind bezel
- (DVI) Digital Video Inputs
- Accepts analog 15-pin video input

ATM1700
\$1,600.00

ATM1700T (touch)
\$1,855.00



ATM1700 - 17"

- 17" color TFT LCD display
- SXGA, 1280 x 1024 native resolution
- 16 million colors
- 50,000 hrs backlight life
- Integral 100-240 VAC power supply
- Simplified installation with no studs
- Thin design - only 2.6" behind bezel
- (DVI) Digital Video Inputs
- Accepts analog 15-pin video input

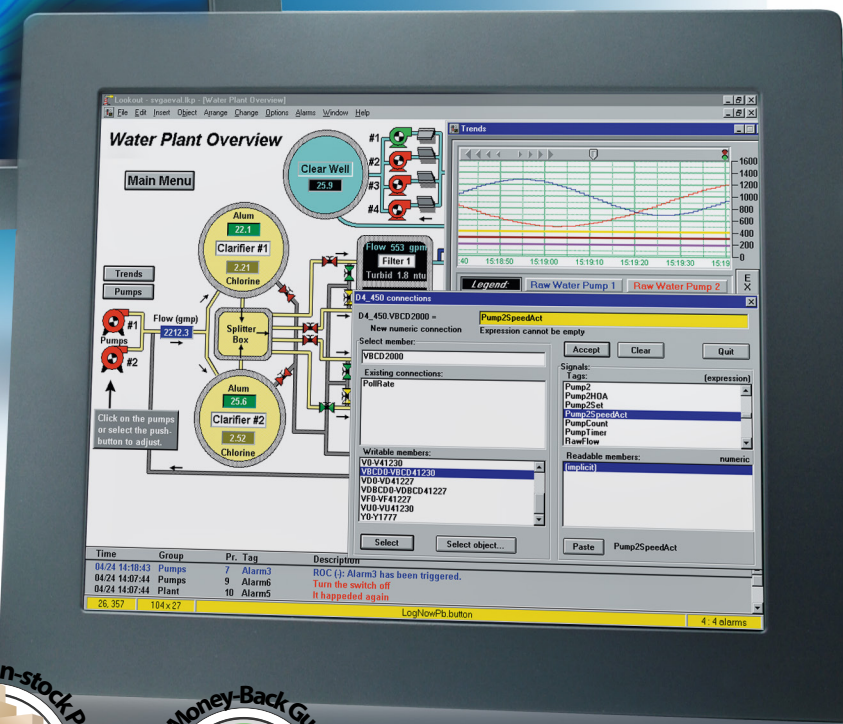
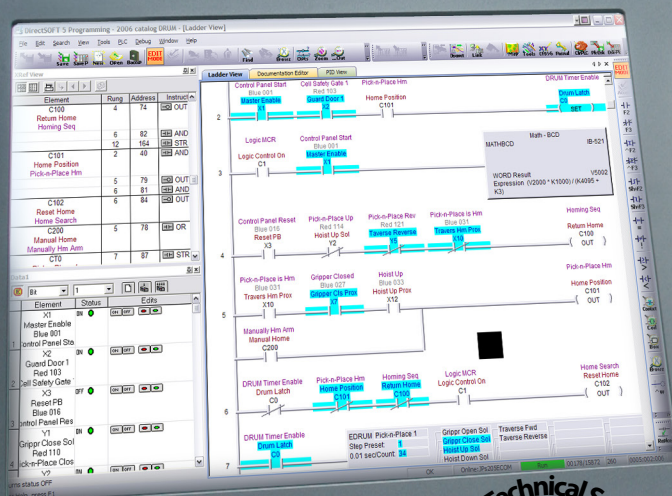
ATM1900
\$1,981.00

ATM1900T (touch)
\$2,237.00



ATM1900 - 19"

- 19" color TFT LCD display
- SXGA, 1280 x 1024 native resolution
- 16 million colors
- 40,000 hrs backlight life
- Integral 100-240 VAC power supply
- Simplified installation with no studs
- Thin design - only 2.7" behind bezel
- (DVI) Digital Video Inputs
- Accepts analog 15-pin video input



Located in USA



Quality Industrial Monitors at a Great Price!



15" ATLAS	17" ATLAS	19" ATLAS
\$1,269.00 ATM1500	\$1,600.00 ATM1700	\$1,981.00 ATM1900
\$1,523.00 ATM1500T	\$1,855.00 ATM1700T	\$2,237.00 ATM1900T

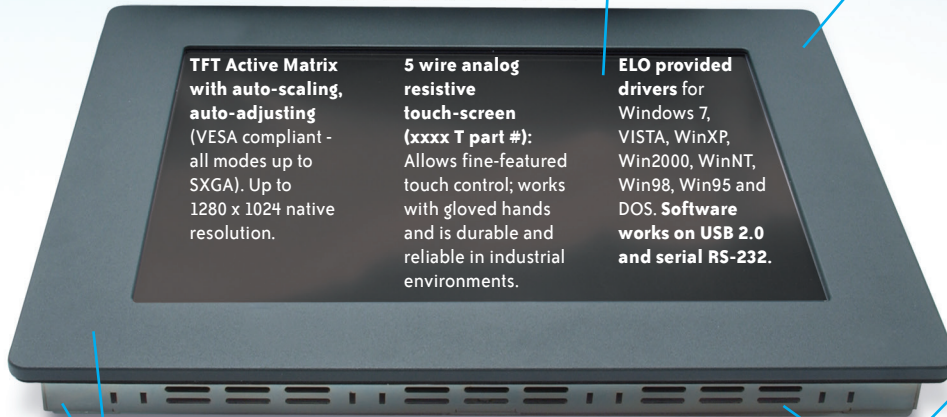
"T" models have resistive touchscreens

**UL, cUL approved
NEMA 4/4X/12, IP65
FCC 47 CFR, Part
15, Class A Bezel
Construction**

Bezel Construction:
0.25" Machined Aluminum with a recessed gasket pocket to keep moisture out and powder coated treated with an attractive dark gray textured powder coating

Impact Window:
.125" Lexan (Polycarbonate) with a clear hard coat

FRONT



TFT Active Matrix with auto-scaling, auto-adjusting (VESA compliant - all modes up to SXGA). Up to 1280 x 1024 native resolution.

5 wire analog resistive touch-screen (xxxx T part #): Allows fine-featured touch control; works with gloved hands and is durable and reliable in industrial environments.

ELO provided drivers for Windows 7, VISTA, WinXP, Win2000, WinNT, Win98, Win95 and DOS. **Software works on USB 2.0 and serial RS-232.**

Simplified installation with no studs, housed in a heavy duty steel chassis with a powder coated machined aluminum bezel (mounting clips included)

Screen setup via rear keypad prevents tampering

"Auto-adjust" button on back panel keypad for easy display optimization

Ventilation located on all sides to reduce heat build-up 0 to 50 °C (32 to 122 °F)

VESA Ready
VESA arm mount ready (100mm)

The **16-gauge CRS steel chassis** provides corrosion resistance and extra strength.

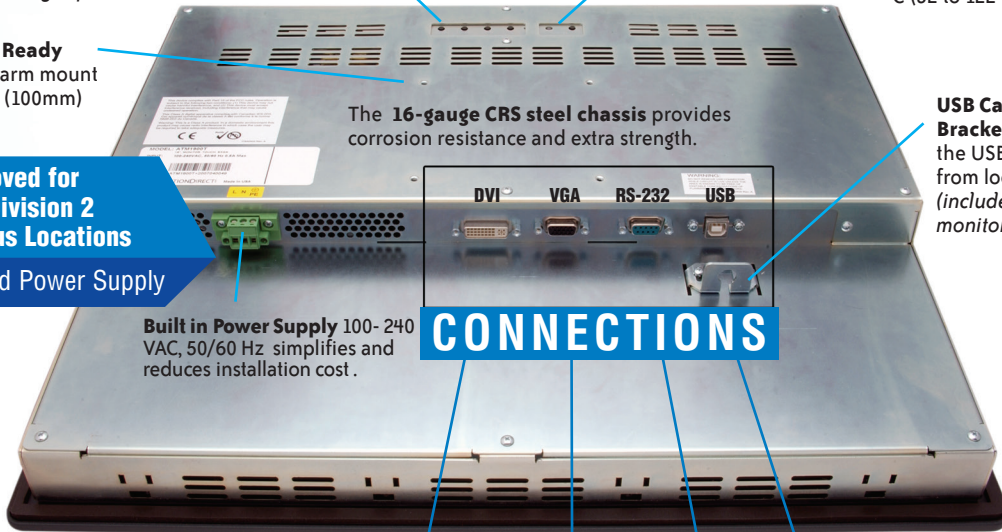
USB Cable Bracket keeps the USB cable from loosening (included with monitor)

UL Approved for Class I Division 2 Hazardous Locations

Integrated Power Supply

Built in Power Supply 100- 240 VAC, 50/60 Hz simplifies and reduces installation cost.

CONNECTIONS



BACK



DVI

VGA

RS-232

USB

Touch models only Touch models only



SIDE

Compact size and very thin panel mount depth of less than 2.75" saves enclosure space

Recessed cable connections conserve panel space