

Diamond Shield Fiberglass Enclosures

Screw Cover



DS121006W

Construction

- Hot compression molded fiberglass reinforced polyester (thermoset)
- Poured polyurethane seamless gasket provides watertight, dust-tight environmental seal
- Chemical- and corrosion-resistant
- UV-resistant
- Rounded edges, minimal protrusions or exposed pocket prevent accumulation of dust or debris
- 304 stainless steel used on all external hardware
- Optional mounting feet available
- Opaque cover with four screws
- Raised bosses with brass inserts accepting #10-32 screws for optional panel mounting
- 216 lb-in impact resistance per UL746C
- Color: Gray

Listings

- UL/cUL 50/50E/508A Types 1, 3, 3S, 12, 13, and 4X
[File E64358]
- UL1741 and ANSI/UL1703
[File E333478]
- CSA Certified Types 1, 3, 3S, 12, 13, and 4X
[File LR069014]
- NEMA Standard 250 Types 1, 3, 3S, 12, 13, and 4X
[File E362920]
- IEC 60529 IP66
- Flammability Rating: UL94-5V
 - Non-flame propagating
 - Flame Spread classification: NFPA No. 101, Class A (1)
- Temperature Range: -76°F to 274°F
[-60°C to 134°C]



Shipping Schedule

Same day 1 - 5 days 1 - 7 days 1 - 15 days 1 - 20 days

Color indicates shipping lead time in business days.

Diamond Shield Fiberglass Enclosures - Screw Cover

| Part Number | Price | Enclosure Overall Size HxWxD | Wt. | Carbon Steel Subpanel | Fiberglass Subpanel | Aluminum Subpanel | Drawing Link |
|---------------------------|----------|---|--------------|---------------------------|--------------------------|---------------------------|---------------------|
| DS60604W | \$127.00 | 7.41 x 7.79 x 4.31 [188 x 198 x 109] | 2.50 [1.13] | BP66CS | — | BP66AL | PDF |
| DS80604W | \$134.00 | 9.41 x 7.79 x 4.31 [239 x 198 x 109] | 3.00 [1.36] | BP86CS | BP86FG | BP86AL | PDF |
| DS100806W | \$168.00 | 11.42 x 9.79 x 6.31 [290 x 249 x 160] | 4.50 [2.04] | BP108CS | BP108FG | BP108AL | PDF |
| DS121006W | \$191.00 | 13.45 x 11.83 x 6.31 [342 x 300 x 160] | 6.00 [2.72] | BP1210CS | BP1210FG | BP1210AL | PDF |
| DS141206W | \$223.00 | 15.44 x 13.86 x 6.34 [392 x 352 x 161] | 8.00 [3.63] | BP1412CS | BP1412FG | BP1412AL | PDF |
| DS141208W | \$237.00 | 15.44 x 13.86 x 8.34 [392 x 352 x 212] | 9.50 [4.31] | BP1412CS | BP1412FG | BP1412AL | PDF |
| DS161408W | \$262.00 | 17.58 x 15.96 x 8.34 [447 x 405 x 212] | 11.50 [5.22] | BP1614CS | BP1614FG | BP1614AL | PDF |
| DS181610W | \$345.00 | 19.77 x 18.15 x 10.34 [502 x 461 x 263] | 16.00 [7.26] | BP1816CS | BP1816FG | BP1816AL | PDF |
| DS201610W | \$604.00 | 21.79 x 18.16 x 10.34 [553 x 461 x 263] | 16.00 [7.26] | BPJ2016CS | — | BPJ2016AL | PDF |

Notes: Subpanels must be ordered separately.

Dimensions in inches [millimeters].

Weight in pounds [kilograms].

Mounting foot kit [DSMGFTKIT] must be ordered separately.

Diamond Shield Fiberglass Enclosures

Hinged Screw Cover



[DS80804HW](#)

Construction

- Hot compression molded fiberglass reinforced polyester (thermoset)
- Poured polyurethane seamless gasket provides watertight, dust-tight environmental seal
- Chemical- and corrosion-resistant
- UV-resistant
- Rounded edges, minimal protrusions or exposed pocket prevents accumulation of dust or debris
- 304 stainless steel used on all external hardware
- Optional mounting feet available
- Opaque, hinged cover with two screws
- Raised bosses with brass inserts accepting #10-32 screws for optional panel mounting
- 216 lb-in impact resistance per ULa746C
- Full 180° door opening
- Color: Gray

Listings

- UL/cUL 50/50E/ 508A Types 1, 3, 3S, 12, 13, and 4X [File E64358]
- UL1741 and ANSI/UL1703 [File E333478]
- CSA Certified Types 1, 3, 3S, 12, 13, and 4X [File LR069014]
- NEMA Standard 250 Types 1, 3, 3S, 12, 13, and 4X
- IEC 60529 IP66 [File E362920]
- Flammability Rating: UL94-5V
 - Non-flame propagating
 - Flame Spread classification: NFPA No. 101, Class A (1)
- Temperature Range: -76°F to 274°F [-60°C to 134°C]



Shipping Schedule

| | | | | |
|----------|------------|------------|-------------|-------------|
| Same day | 1 - 5 days | 1 - 7 days | 1 - 15 days | 1 - 20 days |
|----------|------------|------------|-------------|-------------|

Color indicates shipping lead time in business days.

Diamond Shield Fiberglass Enclosures – Hinged Screw Cover

| Part Number | Price | Enclosure Overall Size HxWxD | Wt. | Carbon Steel Subpanel | Fiberglass Subpanel | Aluminum Subpanel | Drawing Link |
|----------------------------|----------|---|--------------|---------------------------|--------------------------|---------------------------|---------------------|
| DS60604HW | \$115.00 | 7.41 x 7.79 x 4.31 [188 x 198 x 109] | 2.50 [1.13] | BP66CS | — | BP66AL | PDF |
| DS80804HW | \$129.00 | 9.39 x 9.76 x 4.31 [239 x 248 x 109] | 3.00 [1.36] | BP88CS | — | — | PDF |
| DS80604HW | \$118.00 | 9.41 x 7.79 x 4.31 [239 x 198 x 109] | 3.00 [1.36] | BP86CS | BP86FG | BP86AL | PDF |
| DS100806HW | \$144.00 | 11.42 x 9.79 x 6.31 [290 x 249 x 160] | 4.50 [2.04] | BP108CS | BP108FG | BP108AL | PDF |
| DS121006HW | \$163.00 | 13.45 x 11.83 x 6.31 [342 x 300 x 160] | 6.00 [2.72] | BP1210CS | BP1210FG | BP1210AL | PDF |
| DS141206HW | \$188.00 | 15.49 x 13.86 x 6.31 [393 x 352 x 160] | 8.00 [3.63] | BP1412CS | BP1412FG | BP1412AL | PDF |
| DS141208HW | \$202.00 | 15.49 x 13.86 x 8.34 [393 x 352 x 212] | 9.50 [4.31] | BP1412CS | BP1412FG | BP1412AL | PDF |
| DS161408HW | \$217.00 | 17.58 x 15.96 x 8.34 [447 x 405 x 212] | 11.50 [5.22] | BP1614CS | BP1614FG | BP1614AL | PDF |
| DS181610HW | \$287.00 | 19.77 x 18.15 x 10.34 [502 x 461 x 263] | 16.00 [7.26] | BP1816CS | BP1816FG | BP1816AL | PDF |
| DS201610HW | \$495.00 | 21.79 x 18.16 x 10.34 [553 x 461 x 263] | 16.00 [7.26] | BPJ2016CS | — | BPJ2016AL | PDF |

Notes: Subpanels must be ordered separately.
 Dimensions in inches [millimeters].
 Weight in pounds [kilograms].
 Mounting foot kit [\[DSMGFTKIT\]](#) must be ordered separately.

Diamond Shield Fiberglass Enclosures

Single-Door with Twist-Lock Latches



DS121006HLL

Construction

- Hot compression molded fiberglass reinforced polyester (thermoset)
- Poured polyurethane seamless gasket provides watertight, dust-tight environmental seal
- Chemical- and corrosion-resistant
- UV-resistant
- Rounded edges, minimal protrusions or exposed pocket prevents accumulation of dust or debris
- 304 stainless steel used on all external hardware
- Optional mounting feet available
- Opaque, hinged cover with two padlockable twist-lock latches
- Raised bosses with brass inserts accepting #10-32 screws for optional panel mounting
- 216 lb-in impact resistance per UL746C
- Full 180° door opening
- Color: Gray

Listings

- UL/cUL 50/50E/ 508A Types 1, 3, 3S, 12, 13, and 4X [File E64358]
- UL1741 and ANSI/UL1703 [File E333478]
- CSA Certified Types 1, 3, 3S, 12, 13, and 4X [File LR069014]
- NEMA Standard 250 Types 1, 3, 3S, 12, 13, and 4X
- IEC 60529 IP66 [File E362920]
- Flammability Rating: UL94-5V
 - Non-flame propagating
 - Flame Spread classification: NFPA No. 101, Class A (1)
- Temperature Range: -76°F to 274°F [-60°C to 134°C]



Shipping Schedule

Same day 1 - 5 days 1 - 7 days 1 - 15 days 1 - 20 days

Color indicates shipping lead time in business days.

Diamond Shield Fiberglass Enclosures – Single-Door with Twist-Lock Latches

| Part Number | Price | Enclosure Overall Size HxWxD | Wt. | Carbon Steel Subpanel | Fiberglass Subpanel | Aluminum Subpanel | Drawing Link |
|-----------------------------|----------|---|--------------|--------------------------|--------------------------|--------------------------|---------------------|
| DS100806HLL | \$211.00 | 11.42 x 9.79 x 6.31 [290 x 249 x 160] | 4.50 [2.04] | BP108CS | BP108FG | BP108AL | PDF |
| DS121006HLL | \$235.00 | 13.45 x 11.83 x 6.31 [342 x 300 x 160] | 6.00 [2.72] | BP1210CS | BP1210FG | BP1210AL | PDF |
| DS141208HLL | \$325.00 | 15.44 x 13.86 x 8.34 [392 x 352 x 212] | 9.50 [4.31] | BP1412CS | BP1412FG | BP1412AL | PDF |
| DS161408HLL | \$348.00 | 17.58 x 15.96 x 8.34 [447 x 405 x 212] | 11.50 [5.22] | BP1614CS | BP1614FG | BP1614AL | PDF |
| DS181610HLL | \$419.00 | 19.77 x 18.15 x 10.34 [502 x 461 x 263] | 16.00 [7.26] | BP1816CS | BP1816FG | BP1816AL | PDF |

Notes: Subpanels must be ordered separately.
 Dimensions in inches [millimeters].
 Weight in pounds [kilograms].
 Mounting foot kit [\[DSMGFTKIT\]](#) must be ordered separately.

Diamond Shield Fiberglass Enclosures

Single-Door with Quick-Release Latches



[DS80604HPL](#)

Construction

- Hot compression molded fiberglass reinforced polyester (thermoset)
- Poured polyurethane seamless gasket provides watertight, dust-tight environmental seal
- Chemical- and corrosion-resistant
- UV-resistant
- Rounded edges, minimal protrusions or exposed pocket prevents accumulation of dust or debris
- 304 stainless steel used on all external hardware
- Optional mounting feet available
- Raised bosses with brass inserts accepting #10-32 screws for optional panel mounting
- 216 lb-in impact resistance per UL746C
- Opaque hinged cover with two quick-release padlock latches
- Full 180° door opening
- Color: Gray

Listings

- UL/cUL 50/50E/508A Types 1, 3, 3S, 12, 13, and 4X [File E64358]
- UL1741 and ANSI/UL1703 [File E333478]
- CSA Certified Types 1, 3, 3S, 12, 13, and 4X [File LR069014]
- NEMA Standard 250 Types 1, 3, 3S, 12, 13, and 4X
- IEC 60529 IP66 [File E362920]
- Flammability Rating: UL94-5V
 - Non-flame propagating
 - Flame Spread classification: NFPA No. 101, Class A (1)
- Temperature Range: -76°F to 274°F [-60°C to 134°C]



Shipping Schedule

| | | | | |
|----------|------------|------------|-------------|-------------|
| Same day | 1 - 5 days | 1 - 7 days | 1 - 15 days | 1 - 20 days |
|----------|------------|------------|-------------|-------------|

Color indicates shipping lead time in business days.

Diamond Shield Fiberglass Enclosures – Single-Door with Quick-Release Latches

| Part Number | Price | Enclosure Overall Size HxWxD | Wt. | Carbon Steel Subpanel | Fiberglass Subpanel | Aluminum Subpanel | Drawing Link |
|-----------------------------|----------|---|--------------|---------------------------|--------------------------|---------------------------|---------------------|
| DS60604HPL | \$145.00 | 7.41 x 7.79 x 4.31 [188 x 198 x 109] | 2.50 [1.13] | BP66CS | — | BP66AL | PDF |
| DS80604HPL | \$147.00 | 9.41 x 7.79 x 4.31 [239 x 198 x 109] | 3.00 [1.36] | BP86CS | BP86FG | BP86AL | PDF |
| DS80804HPL | \$153.00 | 9.39 x 9.76 x 4.31 [239 x 248 x 109] | 3.00 [1.36] | BP88CS | — | — | PDF |
| DS100806HPL | \$164.00 | 11.42 x 9.79 x 6.31 [290 x 249 x 160] | 4.50 [2.04] | BP108CS | BP108FG | BP108AL | PDF |
| DS121006HPL | \$182.00 | 13.45 x 11.83 x 6.31 [342 x 300 x 160] | 6.00 [2.72] | BP1210CS | BP1210FG | BP1210AL | PDF |
| DS141206HPL | \$230.00 | 15.49 x 13.86 x 6.31 [393 x 352 x 160] | 8.00 [3.63] | BP1412CS | BP1412FG | BP1412AL | PDF |
| DS141208HPL | \$251.00 | 15.49 x 13.86 x 8.34 [393 x 352 x 212] | 9.50 [4.31] | BP1412CS | BP1412FG | BP1412AL | PDF |
| DS161408HPL | \$268.00 | 17.58 x 15.96 x 8.34 [447 x 405 x 212] | 11.50 [5.22] | BP1614CS | BP1614FG | BP1614AL | PDF |
| DS181610HPL | \$325.00 | 19.77 x 18.15 x 10.34 [502 x 461 x 263] | 16.00 [7.26] | BP1816CS | BP1816FG | BP1816AL | PDF |
| DS201610HPL | \$515.00 | 21.79 x 18.16 x 10.34 [553 x 461 x 263] | 16.00 [7.26] | BPJ2016CS | — | BPJ2016AL | PDF |

Notes: Subpanels must be ordered separately.
 Dimensions in inches [millimeters].
 Weight in pounds [kilograms].
 Mounting foot kit [\[DSMGFTKIT\]](#) must be ordered separately.

Diamond Shield Fiberglass Enclosures

Clear Polycarbonate Single-Door with Quick-Release Latches



DSCC80804HPL

Construction

- Hot compression molded fiberglass reinforced polyester (thermoset)
- Poured polyurethane seamless gasket provides watertight, dust-tight environmental seal
- Chemical- and corrosion-resistant
- UV-resistant
- Rounded edges, minimal protrusions or exposed pocket areas for accumulation of dust or debris
- 304 stainless steel used on all external hardware
- Optional mounting feet available
- Clear polycarbonate hinged cover with padlockable quick-release latches
- Raised bosses with brass inserts accepting #10-32 screws for optional panel mounting
- 216 lb-in impact resistance per UL746C
- Full 180° door opening
- Color: Gray

Listings

- UL/cUL 50/50E/ 508A Types 1, 3, 3S, 12, 13, and 4X [File E64358]
- UL1741 and ANSI/UL1703 [File E333478]
- CSA Certified Types 1, 3, 3S, 12, 13, and 4X [File LR069014]
- NEMA Standard 250 Types 1, 3, 3S, 12, 13, and 4X
- IEC 60529 IP66 [File E362920]
- Non-flame propagating
 - Flammability Rating body: UL94-5V
 - Flammability Rating cover: UL94 V-0
 - Flame Spread classification: NFPA No. 101, Class A (1)
- Temperature Range: body -76°F to 274°F [-60°C to 134°C]
- Temperature Range cover: -30°F to 248°F [-34°C to 120°C]



Shipping Schedule

| | | | | |
|----------|------------|------------|-------------|-------------|
| Same day | 1 - 5 days | 1 - 7 days | 1 - 15 days | 1 - 20 days |
|----------|------------|------------|-------------|-------------|

Color indicates shipping lead time in business days.

Diamond Shield Fiberglass Enclosures – Clear Polycarbonate Single-Door with Quick-Release Latches

| Part Number | Price | Enclosure Overall Size HxWxD | Wt | Carbon Steel Subpanel | Fiberglass Subpanel | Aluminum Subpanel | Drawing Link |
|-------------------------------|----------|--|--------------|--------------------------|--------------------------|--------------------------|---------------------|
| DSCC60604HPL | \$156.00 | 7.41 x 7.79 x 4.31 [188 x 198 x 109] | 2.50 [1.13] | BP66CS | — | BP66AL | PDF |
| DSCC80804HPL | \$175.00 | 9.39 x 9.76 x 4.31 [239 x 248 x 109] | 3.00 [1.36] | BP88CS | — | — | PDF |
| DSCC100806HPL | \$197.00 | 11.42 x 9.79 x 6.31 [290 x 249 x 160] | 4.50 [2.04] | BP108CS | BP108FG | BP108AL | PDF |
| DSCC121006HPL | \$218.00 | 13.45 x 11.83 x 6.31 [342 x 300 x 160] | 6.00 [2.72] | BP1210CS | BP1210FG | BP1210AL | PDF |
| DSCC141206HPL | \$300.00 | 15.49 x 13.86 x 6.31 [393 x 352 x 160] | 8.00 [3.63] | BP1412CS | BP1412FG | BP1412AL | PDF |
| DSCC161408HPL | \$365.00 | 17.58 x 15.96 x 8.34 [447 x 405 x 212] | 11.50 [5.22] | BP1614CS | BP1614FG | BP1614AL | PDF |

Notes: Subpanels must be ordered separately.
 Dimensions in inches [millimeters].
 Weight in pounds [kilograms].
 Mounting foot kit [\[DSMGFTKIT\]](#) must be ordered separately.

Diamond Shield Fiberglass Enclosures

Single-Door with Acrylic Window and Twist-Lock Latches



[DSW161408HLL](#)

Construction

- Hot compression molded fiberglass reinforced polyester (thermoset)
- Poured polyurethane seamless gasket provides watertight, dust-tight environmental seal
- Chemical- and corrosion-resistant
- UV-resistant
- Rounded edges, minimal protrusions or exposed pocket areas for assembly of dust and debris
- 304 stainless steel used on all external hardware
- Optional mounting feet available
- Hinged cover with flush-bonded clear acrylic window, secured with two padlockable, twist-lock latches
- All bosses utilize threaded brass inserts accepting #10-32 screws for optional panel mounting
- 216 lb-in impact resistance per UL746C
- Full 180° door opening
- Abrasion-resistant acrylic material for maximum visibility
- Color: Gray

Listings

- UL/cUL 50/50E/ 508A Types 1, 3, 3S, 12, 13, and 4X [File E64358]
- UL1741 and ANSI/UL1703 [File E333478]
- CSA Certified Types 1, 3, 3S, 12, 13, and 4X [File LR069014]
- NEMA Standard 250 Types 1, 3, 3S, 12, 13, and 4X
- IEC 60529 IP66 [File E362920]
- Temperature Range body: -76°F to 274°F [-60°C to 134°C]
- Temperature Range window: -26°F to 170°F [-32°C to 76°C]
- Non-flame propagating
 - Flammability Rating body: UL94 V-5
 - Flammability Rating window: UL94-HB
 - Flame Spread classification: NFPA No. 101, Class A (1)



Shipping Schedule

| | | | | |
|----------|------------|------------|-------------|-------------|
| Same day | 1 - 5 days | 1 - 7 days | 1 - 15 days | 1 - 20 days |
|----------|------------|------------|-------------|-------------|

Color indicates shipping lead time in business days.

Diamond Shield Fiberglass Enclosures – Single-Door with Acrylic Window and Twist-Lock Latches

| Part Number | Price | Enclosure Overall Size HxWxD | Wt. | Carbon Steel Subpanel | Fiberglass Subpanel | Aluminum Subpanel | Drawing Link |
|------------------------------|----------|---|--------------|--------------------------|--------------------------|--------------------------|---------------------|
| DSW100806HLL | \$616.00 | 11.42 x 9.79 x 6.31 [290 x 249 x 160] | 4.50 [2.04] | BP108CS | BP108FG | BP108AL | PDF |
| DSW161408HLL | \$616.00 | 17.58 x 15.96 x 8.34 [447 x 405 x 212] | 11.50 [5.22] | BP1614CS | BP1614FG | BP1614AL | PDF |
| DSW181610HLL | \$683.00 | 19.77 x 18.15 x 10.34 [502 x 461 x 263] | 16.00 [7.26] | BP1816CS | BP1816FG | BP1816AL | PDF |

Notes: Subpanels must be ordered separately.
 Dimensions in inches [millimeters].
 Weight in pounds [kilograms].
 Mounting foot kit [[DSMGFTKIT](#)] must be ordered separately.

Diamond Shield Fiberglass Enclosures

Single-Door with Acrylic Window and Quick-Release Latches



[DSW100806HPL](#)

Construction

- Hot compression molded fiberglass reinforced polyester (thermoset)
- Poured polyurethane seamless gasket provides watertight, dust-tight environmental seal
- Chemical- and corrosion-resistant
- UV-resistant
- Rounded edges, minimal protrusions or exposed pocket prevents accumulation of dust or debris
- 304 stainless steel used on all external hardware
- Optional mounting feet available
- Hinged cover with flush-bonded clear acrylic window, secured with two padlockable quick-release latches
- All bosses utilize threaded brass inserts accepting #10-32 screws for optional panel mounting
- 216 lb-in impact resistance per UL746C
- Full 180° door opening
- Color: Gray
- Abrasion resistant acrylic material for maximum visibility

Listings

- UL/cUL 50/50E/ 508A Types 1, 3, 3S, 12, 13, and 4X [File E64358]
- UL1741 and ANSI/UL1703 [File E333478]
- CSA Certified Types 1, 3, 3S, 12, 13, and 4X [File LR069014]
- NEMA Standard 250 Types 1, 3, 3S, 12, 13, and 4X
- IEC 60529 IP66 [File E362920]
- Flammability Rating: UL94 V-5V
- Flammability Rating window: UL94-HB
- Temperature Range: -76°F to 274°F [-60°C to 134° C]
- Temperature Range window: -26°F to 170°F [-32°C to 76°C]
 - Non-flame propagating
 - Flame Spread classification: NFPA No. 101, Class A (1)



Shipping Schedule

Same day 1 - 5 days 1 - 7 days 1 - 15 days 1 - 20 days

Color indicates shipping lead time in business days.

Diamond Shield Fiberglass Enclosures Single-Door with Acrylic Window and Quick-Release Latches

| Part Number | Price | Enclosure Overall Size HxWxD | Wt. | Carbon Steel Subpanel | Fiberglass Subpanel | Aluminum Subpanel | Drawing Link |
|-------------------------------------|----------|---|--------------|---------------------------------|---------------------------------|---------------------------------|----------------------------|
| <u>DSW100806HPL</u> | \$326.00 | 11.42 x 9.79 x 6.31 [290 x 249 x 160] | 4.50 [2.04] | <u>BP108CS</u> | <u>BP108FG</u> | <u>BP108AL</u> | <u>PDF</u> |
| <u>DSW121006HPL</u> | \$360.00 | 13.45 x 11.83 x 6.31 [342 x 300 x 160] | 6.00 [2.72] | <u>BP1210CS</u> | <u>BP1210FG</u> | <u>BP1210AL</u> | <u>PDF</u> |
| <u>DSW141206HPL</u> | \$497.00 | 15.44 x 13.86 x 6.34 [392 x 352 x 161] | 8.00 [3.63] | <u>BP1412CS</u> | <u>BP1412FG</u> | <u>BP1412AL</u> | <u>PDF</u> |
| <u>DSW141208HPL</u> | \$654.00 | 15.44 x 13.86 x 8.34 [392 x 352 x 212] | 8.00 [3.63] | <u>BP1412CS</u> | <u>BP1412FG</u> | <u>BP1412AL</u> | <u>PDF</u> |
| <u>DSW161408HPL</u> | \$655.00 | 17.58 x 15.96 x 8.34 [447 x 405 x 212] | 11.50 [5.22] | <u>BP1614CS</u> | <u>BP1614FG</u> | <u>BP1614AL</u> | <u>PDF</u> |
| <u>DSW181610HPL</u> | \$670.00 | 19.77 x 18.15 x 10.34 [502 x 461 x 263] | 16.00 [7.26] | <u>BP1816CS</u> | <u>BP1816FG</u> | <u>BP1816AL</u> | <u>PDF</u> |

Notes: Subpanels must be ordered separately.
 Dimensions in inches [millimeters].
 Weight in pounds [kilograms].
 Mounting foot kit [[DSMGFTKIT](#)] must be ordered separately.

CF Series Fiberglass Enclosures Junction Box with Crowned Screw Cover

STÄHLIN
A ROBROY ENCLOSURES® BRAND



CF1144

Construction

- Hot compression molded fiberglass reinforced polyester (thermoset)
- Poured polyurethane seamless gasket provides watertight dust-tight environmental seal
- UV-resistant
- Workable material cuts, drills, punches and saws with ease and accuracy
- Four recessed captive stainless steel screws ([CF1732](#) has six)
- Optional mounting feet available for [CF644](#), [CF844](#), and [CF1144](#) only
- Rounded edges, minimal protrusions or exposed pocket areas for accumulation of dust or debris
- Submersible, non-corrosive environmental design
- 216 lb-in impact resistance per UL746C
- Non-conductive double insulated material
- Smooth surface, no color variations, swirls or color pockets, no voids
- Color: Gray

Listings

- UL/cUL [File E64358]
- NEMA Types 1, 3R, 4X, 6P, and 12 [Files 508A, 50, and 50e]
- CSA Standard C22.2 Types 1, 3R, 4X, 6P, and 12 [File LR069014]
- IEC 60529 Rating IP66, IP67, IP68 [File E362920]
- UL 1741 [File E333478]
- Temperature Range (-76°F to +274°F) (-60°C to +134°C)
- Flammability Rating UL94-5V
 - Self extinguishing
 - Non-halogenated
 - Non-flame propagating
- NFPA No. 101 Flame Spread Class A (1)

Certifications

- cULus, CSA, IEC, REACH
- Outdoor UV Exposure Rated [UL 746C (F1)]
- Plenum Space Rating [File 2043]

Shipping Schedule

Same day 1 - 5 days 1 - 7 days 1 - 15 days 1 - 20 days

Color indicates shipping lead time in business days.



CF Series Fiberglass Enclosures – Junction Box with Crowned Screw Cover

| Part Number | Price | Enclosure Overall Size HxWxD | Drawing Link |
|--------------------------|----------|-------------------------------------|---------------------|
| CF332* | \$56.00 | 3.72 x 3.63 x 2.95 [94 x 92 x 75] | PDF |
| CF532 | \$59.00 | 5.97 x 3.63 x 3.14 [152 x 92 x 80] | PDF |
| CF644 | \$61.00 | 6.63 x 3.81 x 3.89 [168 x 97 x 99] | PDF |
| CF832 | \$64.00 | 8.41 x 3.63 x 3.14 [214 x 92 x 80] | PDF |
| CF844 | \$66.00 | 8.88 x 3.81 x 3.89 [226 x 97 x 99] | PDF |
| CF932 | \$71.00 | 9.35 x 3.63 x 3.14 [237 x 92 x 80] | PDF |
| CF1144 | \$75.00 | 11.13 x 3.81 x 3.89 [283 x 97 x 99] | PDF |
| CF1432 | \$80.00 | 13.78 x 3.63 x 3.14 [350 x 92 x 80] | PDF |
| CF1732** | \$116.00 | 17.35 x 3.63 x 3.14 [441 x 92 x 80] | PDF |

Notes: No subpanel available for these enclosures.

Dimensions in inches [millimeters].

Weight in pounds [kilograms].

*CF332 has flat cover.

**CF1732 has six captive cover screws that can affect usable interior space. Drawings do not reflect center screw set.

F Series Fiberglass Enclosures

Junction Box with Screw Cover



F763

Construction

- Hot compression molded fiberglass reinforced polyester (thermoset)
- Poured polyurethane seamless gasket provides watertight dust-tight environmental seal
- UV-resistant
- Workable material cuts, drills, punches and saws with ease and accuracy
- Four captive stainless steel screws
- Optional mounting feet available
- Raised bosses with brass inserts accepting #10-32 screws for optional panel mounting
- Rounded edges, minimal protrusions or exposed pocket areas for accumulation of dust or debris
- Non-corrosive in chemical exposure
- Submersible, non-corrosive environmental design
- 216 lb-in impact resistance per UL746C
- Lift-off cover with four cover screws
- Smooth surface, no color variations, swirls or color pockets, no voids
- Color: Gray

Listings

- UL/cUL [File E64358]
- NEMA Types 1, 3R, 4X, 6P, and 12 [Files 508A, 50, and 50e]
- CSA Standard C22.2 Types 1, 3R, 4X, 6P, and 12 [File LR069014]
- IEC 60529 Ratings IP66, IP67, IP68 [File E362920]
- IUL 1741 [File E333478]
- Temperature Range (-76°F to +274°F) (-60°C to +134°C)
- Flammability Rating UL94-5V
 - Self-extinguishing
 - Non-halogenated
 - Non-flame propagating
- NFPA No. 101 Flame Spread Class A (1)

Certifications

- cULus, CSA, IEC, REACH
- Outdoor UV Exposure Rated [UL 746C (F1)]
- Plenum Space Rating [File 2043]

| Shipping Schedule | | | | |
|--|------------|------------|-------------|-------------|
| Same day | 1 - 5 days | 1 - 7 days | 1 - 15 days | 1 - 20 days |
| Color indicates shipping lead time in business days. | | | | |

| F Series Fiberglass Enclosures – Junction Box with Screw Cover | | | |
|--|---------|-------------------------------------|---------------------|
| Part Number | Price | Enclosure Overall Size HxWxD | Drawing Link |
| F763 | \$80.00 | 7.63 x 6.63 x 3.19 [194 x 168 x 81] | PDF |
| F963 | \$92.00 | 9.87 x 6.63 x 3.19 [251 x 168 x 81] | PDF |
| Notes: Subpanels must be ordered separately. Dimensions in inches [millimeters]. Weight in pounds [kilograms]. | | | |



J Series Fiberglass Enclosures

Screw Cover



J1008WA Crowned Cover Model Shown

Construction

- Hot compression molded fiberglass reinforced polyester (thermoset)
- Poured polyurethane seamless gasket provides watertight, dust-tight environmental seal
- 304 stainless steel used on all external hardware
- Rounded edges, minimal protrusions or exposed pocket prevents accumulation of dust or debris
- Molded in flange for easy mounting
- Raised bosses with brass inserts accepting #10-32 screws for optional panel mounting
- Stainless steel beaded cover retention chain
- Workable material cuts, drills, punches and saws with ease and accuracy
- Submersible, non-corrosive environmental design
- Lift-off cover
- Non-conductive, UV-resistant
- 216 lb-in impact resistance per UL746C
- Smooth surface, no color variations, swirls or color pockets, no voids
- Color: Gray

Listings

- UL/cUL [File E64358]
- NEMA Types 1, 3R, 4X, 6P, and 12 [Files 508A, 50, and 50e]
- IEC 60529 Ratings IP66 [File E362920]
- UL 1741 [File E333478]
- CSA Standard C22.2 Types 1, 3R, 4X, 6P, and 12 [File LR069014]
- Temperature Range (-76°F to +274°F) (-60°C to +134°C)
- Flammability Rating UL94-5V
 - Self-extinguishing
 - Non-halogenated
 - Non-flame propagating
- NFPA No. 101 Flame Spread Class A (1)
- Impact Rating IK10

Certifications

- cULus, IEC, REACH
- Outdoor UV Exposure Rated [UL 746C (F1)]

Shipping Schedule

| | | | | |
|----------|------------|------------|-------------|-------------|
| Same day | 1 - 5 days | 1 - 7 days | 1 - 15 days | 1 - 20 days |
|----------|------------|------------|-------------|-------------|

Color indicates shipping lead time in business days.



J Series Fiberglass Enclosures – Screw Cover

| Part Number | Price | Enclosure Overall Size HxWxD | Wt. | Carbon Steel Subpanel | Fiberglass Subpanel | Aluminum Subpanel | Drawing Link |
|----------------------------|----------|--|--------------|---------------------------|--------------------------|---------------------------|---------------------|
| J604W | \$86.00 | 7.50 x 5.43 x 4.75 [191 x 138 x 121] | 2.50 [1.13] | BP64CS | — | BP64AL | PDF |
| J606W | \$93.00 | 7.50 x 7.50 x 4.75 [191 x 191 x 121] | 2.75 [1.25] | BP66CS | — | BP66AL | PDF |
| J806W | \$98.00 | 9.62 x 7.50 x 4.74 [244 x 191 x 120] | 3.50 [1.59] | BP86CS | BP86FG | BP86AL | PDF |
| J808W | \$130.00 | 9.56 x 9.38 x 4.87 [243 x 238 x 124] | 3.70 [1.68] | BP88CS | — | — | PDF |
| J1008W | \$104.00 | 11.62 x 9.41 x 4.25 [295 x 239 x 108] | 5.00 [2.27] | BP108CS | BP108FG | BP108AL | PDF |
| J1008WA* | \$123.00 | 11.62 x 9.37 x 5.06 [295 x 238 x 129] | 5.00 [2.27] | BP108CS | BP108FG | BP108AL | PDF |
| J100806W** | \$127.00 | 11.97 x 9.42 x 6.50 [304 x 239 x 165] | 5.25 [2.38] | BP108CS | BP108FG | BP108AL | PDF |
| J1210W | \$139.00 | 13.56 x 11.43 x 5.21 [344 x 290 x 132] | 6.50 [2.95] | BP1210CS | BP1210FG | BP1210AL | PDF |
| J1412W | \$163.00 | 15.50 x 13.50 x 6.25 [394 x 343 x 159] | 8.50 [3.85] | BP1412CS | BP1412FG | BP1412AL | PDF |
| J1614W | \$191.00 | 17.53 x 15.46 x 6.23 [445 x 393 x 158] | 11.50 [5.22] | BP1614CS | BP1614FG | BP1614AL | PDF |
| J1816W | \$252.00 | 19.62 x 17.61 x 8.82 [498 x 447 x 224] | 19.25 [8.73] | BP1816CS | BP1816FG | BP1816AL | PDF |
| J2016W | \$441.00 | 22.00 x 17.68 x 8.83 [559 x 449 x 224] | 21.00 [9.52] | BPJ2016CS | — | BPJ2016AL | PDF |

Notes: Subpanels must be ordered separately.
 Dimensions in inches [millimeters].
 Weight in pounds [kilograms].
 *Crowned Cover
 **Not Rated 6P
 In crowned cover units, the center of the cover is raised 0.75in [19 mm].
 Crowned cover is available only in 10 x 8 x 5 in [254 x 203 x 127 mm] enclosure.

J Series Fiberglass Enclosures

Hinged Screw Cover



J1412HW

Shipping Schedule

Same day 1 - 5 days 1 - 7 days 1 - 15 days 1 - 20 days

Color indicates shipping lead time in business days.

Construction

- Hot compression molded fiberglass reinforced polyester (thermoset)
- Poured polyurethane seamless gasket provides watertight, dust-tight environmental seal
- 304 stainless steel used on all external hardware
- Rounded edges, minimal protrusions or exposed pocket prevents accumulation of dust or debris
- Molded in flange for easy mounting
- Raised bosses with brass inserts accepting #10-32 screws for optional panel mounting
- Workable material cuts, drills, punches and saw with ease and accuracy
- Submersible, non-corrosive environmental design
- Full length stainless steel hinged cover with two screws
- Full 180° door opening
- Non-conductive, UV-resistant
- 216 lb-in impact resistance per UL746C
- Smooth surface, no color variations, swirls or color pockets, no voids
- Color: Gray

Listings

- UL/cUL [File E64358]
- NEMA Types 1, 3R, 4X, 6P, and 12 [Files 508A, 50, and 50e]
- IEC 60529 Ratings IP66 [File E362920]
- UL 1741 [File E333478]
- CSA Standard C22.2 Types 1, 3R, 4X, 6P, and 12 [File LR069014]
- Temperature Range (-76°F to +274°F) (-60°C to +134°C)
- Flammability Rating UL94-5V
 - Self-extinguishing
 - Non-halogenated
 - Non-flame propagating
- NFPA No. 101 Flame Spread Class A (1)
- Impact Rating IK10

Certifications

- cULus, IEC, REACH
- Outdoor UV Exposure Rated [UL 746C (F1)]



J Series Fiberglass Enclosures – Hinged Screw Cover

| Part Number | Price | Enclosure Overall Size HxWxD | Wt. | Carbon Steel Subpanel | Fiberglass Subpanel | Aluminum Subpanel | Drawing Link |
|-----------------------------|----------|--|--------------|---------------------------|--------------------------|---------------------------|---------------------|
| J604HW | \$92.00 | 7.50 x 5.43 x 4.75 [191 x 138 x 121] | 2.50 [1.13] | BP64CS | — | BP64AL | PDF |
| J606HW | \$105.00 | 7.50 x 7.50 x 4.75 [191 x 191 x 121] | 2.75 [1.25] | BP66CS | — | BP66AL | PDF |
| J806HW | \$109.00 | 9.62 x 7.50 x 4.74 [244 x 191 x 120] | 3.50 [1.59] | BP86CS | BP86FG | BP86AL | PDF |
| J808HW | \$155.00 | 9.56 x 9.38 x 4.87 [243 x 238 x 124] | 3.70 [1.68] | BP88CS | — | — | PDF |
| J1008HW | \$127.00 | 11.62 x 9.41 x 4.25 [295 x 239 x 108] | 5.00 [2.27] | BP108CS | BP108FG | BP108AL | PDF |
| J1008HWA* | \$132.00 | 11.62 x 9.37 x 5.06 [295 x 238 x 129] | 5.00 [2.27] | BP108CS | BP108FG | BP108AL | PDF |
| J100806HW** | \$137.00 | 11.97 x 9.42 x 6.50 [304 x 239 x 165] | 5.25 [2.38] | BP108CS | BP108FG | BP108AL | PDF |
| J1210HW | \$149.00 | 13.56 x 11.43 x 5.21 [344 x 290 x 132] | 6.50 [2.95] | BP1210CS | BP1210FG | BP1210AL | PDF |
| J1412HW | \$173.00 | 15.50 x 13.50 x 6.25 [394 x 343 x 159] | 8.50 [3.85] | BP1412CS | BP1412FG | BP1412AL | PDF |
| J1614HW | \$199.00 | 17.53 x 15.46 x 6.23 [445 x 393 x 158] | 11.50 [5.22] | BP1614CS | BP1614FG | BP1614AL | PDF |
| J1816HW | \$263.00 | 19.62 x 17.61 x 8.82 [498 x 447 x 224] | 19.25 [8.73] | BP1816CS | BP1816FG | BP1816AL | PDF |
| J2016HW | \$454.00 | 22.00 x 17.68 x 8.83 [559 x 449 x 224] | 21.00 [9.52] | BPJ2016CS | — | BPJ2016AL | PDF |

Notes: Subpanels must be ordered separately.

Dimensions in inches [millimeters].

Weight in pounds [kilograms].

*Crowned Cover

**Not Rated 6P

In crowned cover units, the center of the cover is raised 0.75in [19 mm].

Crowned cover is available only in 10 x 8 x 5 in [254 x 203 x 127 mm] enclosure.

J Series Fiberglass Enclosures

Single-Door with Twist-Lock Latches



J1210HLL

Construction

- Hot compression molded fiberglass reinforced polyester (thermoset)
- Poured polyurethane seamless gasket provides watertight, dust-tight environmental seal
- 304 stainless steel used on all external hardware
- Rounded edges, minimal protrusions or exposed pocket prevents accumulation of dust or debris
- Molded in flange for easy mounting
- Raised bosses with brass inserts accepting #10-32 screws for optional panel mounting
- Workable material cuts, drills, punches and saws with ease and accuracy
- Full length, stainless steel, hinged cover with twist-lock latches
- Full 180° door opening
- Non-conductive, UV-resistant
- 216 lb-in impact resistance per UL746C
- Smooth surface, no color variations, swirls or color pockets, no voids
- Submersible, non-corrosive environmental design
- Color: Gray

Listings

- UL/cUL [File E64358]
- NEMA Types 1, 3R, 4X, 6P, and 12 [Files 508A, 50, and 50e]
- IEC 60529 Ratings IP66 [File E362920]
- UL 1741 [File E333478]
- CSA Standard C22.2 Types 1, 3R, 4X, 6P, and 12 [File LR069014]
- Temperature Range (-76°F to +274°F) (-60°C to +134°C)
- Flammability Rating UL94-5V
 - Self-extinguishing
 - Non-halogenated
 - Non-flame propagating
- NFPA No. 101 Flame Spread Class A (1)
- Impact Rating IK10

Certifications

- cULus, IEC, REACH
- Outdoor UV Exposure Rated [UL 746C (F1)]

| Shipping Schedule | | | | |
|-------------------|------------|------------|-------------|-------------|
| Same day | 1 - 5 days | 1 - 7 days | 1 - 15 days | 1 - 20 days |

Color indicates shipping lead time in business days.



| J Series Fiberglass Enclosures – Single-Door with Twist-Lock Latches | | | | | | | | |
|--|----------|--|--------------|-------------|---------------------------|--------------------------|---------------------------|---------------------|
| Part Number | Price | Enclosure Overall Size HxWxD | Wt. | No. Latches | Carbon Steel Subpanel | Fiberglass Subpanel | Aluminum Subpanel | Drawing Link |
| J604HLL | \$170.00 | 7.47 x 5.45 x 4.70 [190 x 138 x 119] | 2.50 [1.13] | 1 | BP64CS | — | BP64AL | PDF |
| J606HLL | \$176.00 | 7.50 x 7.53 x 4.82 [191 x 191 x 122] | 2.75 [1.25] | 1 | BP66CS | — | BP66AL | PDF |
| J806HLL | \$178.00 | 9.63 x 7.52 x 4.70 [245 x 191 x 119] | 3.50 [1.59] | 1 | BP86CS | BP86FG | BP86AL | PDF |
| J808HLL | \$187.00 | 9.56 x 9.38 x 4.87 [243 x 238 x 124] | 3.70 [1.68] | 1 | BP88CS | — | — | PDF |
| J1008HLL | \$194.00 | 11.63 x 9.41 x 4.22 [295 x 239 x 107] | 5.00 [2.27] | 1 | BP108CS | BP108FG | BP108AL | PDF |
| J1008HALL* | \$205.00 | 11.63 x 9.37 x 5.08 [295 x 238 x 129] | 5.25 [2.38] | 1 | BP108CS | BP108FG | BP108AL | PDF |
| J100806HLL** | \$205.00 | 11.97 x 9.42 x 6.50 [304 x 239 x 165] | 5.25 [2.38] | 1 | BP108CS | BP108FG | BP108AL | PDF |
| J1210HLL | \$222.00 | 13.56 x 11.43 x 5.22 [344 x 290 x 133] | 6.50 [2.95] | 2 | BP1210CS | BP1210FG | BP1210AL | PDF |
| J1412HLL | \$280.00 | 15.50 x 13.48 x 6.20 [394 x 342 x 157] | 8.50 [3.85] | 2 | BP1412CS | BP1412FG | BP1412AL | PDF |
| J1614HLL | \$305.00 | 17.53 x 15.46 x 6.21 [445 x 393 x 158] | 11.50 [5.22] | 2 | BP1614CS | BP1614FG | BP1614AL | PDF |
| J1816HLL | \$396.00 | 19.63 x 17.61 x 8.81 [499 x 447 x 224] | 19.25 [8.73] | 2 | BP1816CS | BP1816FG | BP1816AL | PDF |
| J2016HLL | \$661.00 | 22.00 x 17.68 x 8.81 [559 x 449 x 224] | 21.00 [9.52] | 2 | BPJ2016CS | — | BPJ2016AL | PDF |

Notes: Subpanels must be ordered separately.
 Dimensions in inches [millimeters].
 Weight in pounds [kilograms].
 *Crowned Cover
 **Not Rated 6P
 In crowned cover units, the center of the cover is raised 0.75in [19 mm].
 Crowned cover is available only in 10 x 8 x 5 in [254 x 203 x 127 mm] enclosure.

J Series Fiberglass Enclosures

Single-Door with Quick-Release Latches



J1008HPL

Shipping Schedule

| | | | | |
|----------|------------|------------|-------------|-------------|
| Same day | 1 - 5 days | 1 - 7 days | 1 - 15 days | 1 - 20 days |
|----------|------------|------------|-------------|-------------|

Color indicates shipping lead time in business days.

Construction

- Hot compression molded fiberglass reinforced polyester (thermoset)
- Poured polyurethane seamless gasket provides watertight, dust-tight environmental seal
- 304 stainless steel used on all external hardware
- Rounded edges, minimal protrusions or exposed pocket areas for accumulation of dust or debris
- Molded in flange for easy mounting
- Raised bosses with brass inserts accepting #10-32 screws for optional panel mounting
- Workable material cuts, drills, punches and saws with ease and accuracy
- Full length, stainless steel, hinged cover with padlockable quick-release latches
- Full 180° door opening
- Non-conductive, UV-resistant
- 216 lb-in impact resistance per UL746C
- Smooth surface, no color variations, swirls or color pockets, no voids
- Submersible, non-corrosive environmental design
- Color: Gray

Listings

- UL/cUL [File E64358]
- NEMA Types 1, 3R, 4X, 6P, and 12 [Files 508A, 50, and 50e]
- IEC 60529 Ratings IP66 [File E362920]
- UL 1741 [File E333478]
- CSA Standard C22.2 Types 1, 3R, 4X, 6P, and 12 [File LR069014]
- Temperature Range (-76°F to +274°F) (-60°C to +134°C)
- Flammability Rating UL94-5V
 - Self-extinguishing
 - Non-halogenated
 - Non-flame propagating
- NFPA No. 101 Flame Spread Class A (1)
- Impact Rating IK10



Certifications

- cULus, IEC, REACH
- Outdoor UV Exposure Rated [UL 746C (F1)]



J Series Fiberglass Enclosures – Single-Door with Quick-Release Latches

| Part Number | Price | Enclosure Overall Size HxWxD | Wt. | No. Latches | Carbon Steel Subpanel | Fiberglass Subpanel | Aluminum Subpanel | Drawing Link |
|-----------------------------|----------|--|--------------|-------------|---------------------------|--------------------------|---------------------------|---------------------|
| J604HPL | \$128.00 | 7.50 x 5.43 x 4.75 [191 x 138 x 121] | 2.50 [1.13] | 1 | BP64CS | — | BP64AL | PDF |
| J606HPL | \$133.00 | 7.50 x 7.50 x 4.75 [191 x 191 x 121] | 2.75 [1.25] | 1 | BP66CS | — | BP66AL | PDF |
| J806HPL | \$134.00 | 9.62 x 7.50 x 4.74 [244 x 191 x 120] | 3.50 [1.59] | 1 | BP86CS | BP86FG | BP86AL | PDF |
| J808HPL | \$182.00 | 9.56 x 9.38 x 4.87 [243 x 238 x 124] | 3.70 [1.68] | 1 | BP88CS | — | — | PDF |
| J1008HPL** | \$146.00 | 11.62 x 9.41 x 4.25 [295 x 239 x 108] | 5.00 [2.27] | 2 | BP108CS | BP108FG | BP108AL | PDF |
| J100806HPL* | \$156.00 | 11.97 x 9.42 x 6.50 [304 x 239 x 165] | 5.25 [2.38] | 1 | BP108CS | BP108FG | BP108AL | PDF |
| J1210HPL | \$167.00 | 13.56 x 11.43 x 5.21 [344 x 290 x 132] | 6.50 [2.95] | 2 | BP1210CS | BP1210FG | BP1210AL | PDF |
| J1412HPL | \$211.00 | 15.50 x 13.50 x 6.25 [394 x 343 x 159] | 8.50 [3.85] | 2 | BP1412CS | BP1412FG | BP1412AL | PDF |
| J1614HPL | \$230.00 | 17.53 x 15.46 x 6.23 [445 x 393 x 158] | 11.50 [5.22] | 2 | BP1614CS | BP1614FG | BP1614AL | PDF |
| J1816HPL | \$298.00 | 19.62 x 17.61 x 8.82 [498 x 447 x 224] | 19.25 [8.73] | 2 | BP1816CS | BP1816FG | BP1816AL | PDF |
| J2016HPL | \$473.00 | 22.00 x 17.68 x 8.83 [559 x 449 x 224] | 21.00 [9.52] | 2 | BPJ2016CS | — | BPJ2016AL | PDF |

Notes: Subpanels must be ordered separately.
 Dimensions in inches [millimeters].
 Weight in pounds [kilograms]
 *Crowned Cover (only available in 10 x 8 x 5 in. [254 x 203 x 127 mm] enclosure; cover center height raised 0.75 in. [19 mm].)
 **Not rated 6P

NEMA 13 J Series Fiberglass Enclosures – Single-Door with Quick-Release Latches

| Part Number | Price | Enclosure Overall Size HxWxD | Wt. | No. Latches | Carbon Steel Subpanel | Fiberglass Subpanel | Aluminum Subpanel | Drawing Link |
|----------------------------|------------|---|---------------|-------------|---------------------------|---------------------|---------------------------|---------------------|
| J2020HPL** | \$710.00 | 23.50 x 22.12 x 11.70 [597 x 562 x 297] | 30.00 [13.61] | 4 | BPJ2020CS | — | BPJ2020AL | PDF |
| J2430HPL** | \$1,336.00 | 26.19 x 32.19 x 12.29 [665 x 818 x 312] | 46.00 [20.86] | 5 | — | — | BPJ3024AL | PDF |
| J2420HPL** | \$1,023.00 | 27.50 x 22.12 x 11.70 [699 x 562 x 297] | 36.00 [16.33] | 4 | BPJ2420CS | — | BPJ2420AL | PDF |
| J2424HPL** | \$1,212.00 | 27.50 x 26.12 x 11.70 [699 x 663 x 297] | 42.00 [19.05] | 4 | BPJ2424CS | — | BPJ2424AL | PDF |
| J3024HPL** | \$1,226.00 | 32.19 x 26.18 x 12.26 [818 x 665 x 311] | 46.00 [20.86] | 5 | — | — | BPJ3024AL | PDF |

Notes: Subpanels must be ordered separately.
 Dimensions in inches [millimeters].
 Weight in pounds [kilograms]

J Series Fiberglass Enclosures

White Single-Door with Quick-Release Latches



WH-J1008HPL

Construction

- Hot compression molded fiberglass reinforced polyester (thermoset)
- Poured polyurethane seamless gasket provides watertight, dust-tight environmental seal
- 304 stainless steel used on all external hardware
- Rounded edges, minimal protrusions or exposed pocket prevents accumulation of dust or debris
- Molded in flange for easy mounting
- Raised bosses with brass inserts for optional panel mounting
- Workable material cuts, drills, punches and saw with ease and accuracy
- Submersible, non-corrosive environmental design
- Full length stainless steel hinged cover with padlockable quick-release latches
- Full 180° door opening
- Non-conductive, UV-resistant
- 216 lb-in impact resistance per UL746C
- Smooth surface, no color variations, swirls or color pockets, no voids
- Color: White

Listings

- UL/cUL [File E64358]
- NEMA Types 1, 3R, 4X, 6P, and 12 [Files 508A, 50, and 50e]
- IEC 60529 Ratings IP66 [File E362920]
- UL 1741 [File E333478]
- CSA Standard C22.2 Types 1, 3R, 4X, 6P, and 12 [File LR069014]
- Temperature Range (-76°F to +274°F) (-60°C to +134°C)
- Flammability Rating UL94-5V
 - Self-extinguishing
 - Non-halogenated
 - Non-flame propagating
- NFPA No. 101 Flame Spread Class A (1)
- Impact Rating IK10

Certifications

- cULus, IEC, REACH Outdoor



Shipping Schedule

Same day | 1 - 5 days | 1 - 7 days | 1 - 15 days | 1 - 20 days

Color indicates shipping lead time in business days.

J Series Fiberglass Enclosures – White Single-Door with Quick-Release Latches

| Part Number | Price | Enclosure Overall Size HxWxD | Wt. | No. Latches | Carbon Steel Subpanel | Fiberglass Subpanel | Aluminum Subpanel | Drawing Link |
|-----------------------------|----------|--|--------------|-------------|--------------------------|--------------------------|--------------------------|---------------------|
| WH-J1008HPL | \$211.00 | 11.63 x 9.41 x 4.22 [295 x 239 x 107] | 5.00 [2.27] | 2 | BP108CS | BP108FG | BP108AL | PDF |
| WH-J1210HPL | \$241.00 | 13.56 x 11.43 x 5.22 [344 x 290 x 133] | 6.50 [2.95] | 2 | BP1210CS | BP1210FG | BP1210AL | PDF |
| WH-J1412HPL | \$305.00 | 15.50 x 13.48 x 6.20 [394 x 342 x 157] | 8.50 [3.85] | 2 | BP1412CS | BP1412FG | BP1412AL | PDF |
| WH-J1614HPL | \$332.00 | 17.53 x 15.46 x 6.21 [445 x 393 x 158] | 11.50 [5.22] | 2 | BP1614CS | BP1614FG | BP1614AL | PDF |
| WH-J1816HPL | \$431.00 | 19.63 x 17.61 x 8.81 [499 x 447 x 224] | 19.25 [8.73] | 2 | BP1816CS | BP1816FG | BP1816AL | PDF |

Notes: Subpanels must be ordered separately.
 Dimensions in inches [millimeters].
 Weight in pounds [kilograms].

JW Series Fiberglass Enclosures

Single-Door with Acrylic Window and Twist-Lock Latches

STÄHLIN
A ROBROY ENCLOSURES® BRAND



JW1210HLL

Construction

- Hot compression molded fiberglass reinforced polyester (thermoset)
- Poured polyurethane seamless gasket provides watertight, dust-tight environmental seal
- 304 stainless steel used on all external hardware
- Rounded edges, minimal protrusions or exposed pocket prevents accumulation of dust or debris
- Molded in flange for easy mounting
- Raised bosses with brass inserts accepting #10-32 screws for optional panel mounting
- Workable material cuts, drills, punches and saws with ease and accuracy
- Scratch- and abrasion-resistant UVA acrylic flush bonded window
- Submersible, non-corrosive environmental design
- Full 180° door opening
- Non-conductive, UV-resistant
- 216 lb-in impact resistance per UL746C
- Smooth surface, no color variations, swirls or color pockets, no voids
- Full length stainless steel hinged cover with twist-lock latches
- Color: Gray

Listings

- UL/cUL [File E64358]
- NEMA Types 1, 3R, 4X, 6P, and 12 [Files 508A, 50, and 50e]
- IEC 60529 Ratings IP66 [File E362920]
- UL 1741 [File E333478]
- CSA Standard C22.2 Types 1, 3R, 4X, 6P, and 12 [File LR069014]
- Temperature Range (-76°F to +274°F) (-60°C to +134°C)
- Window Temperature Range: -26°F to 170°F (-32°C to 76°C)
- Flammability Rating UL94-5V Flammability Rating window: UL94V-HB
- Flammability Rating UL94-5V
 - Self-extinguishing
 - Non-halogenated
 - Non-flame propagating
- NFPA No. 101 Flame Spread Class A (1)
- Impact Rating IK10

Shipping Schedule

| | | | | |
|----------|------------|------------|-------------|-------------|
| Same day | 1 - 5 days | 1 - 7 days | 1 - 15 days | 1 - 20 days |
|----------|------------|------------|-------------|-------------|

Color indicates shipping lead time in business days.

Certifications

- cULus, IEC, REACH
- Outdoor UV Exposure Rated [UL 746C (F1)]



JW Series Fiberglass Enclosures – Single-Door with Acrylic Window and Twist-Lock Latches

| Part Number | Price | Enclosure Overall Size HxWxD | Wt. | No. Latches | Carbon Steel Subpanel | Fiberglass Subpanel | Aluminum Subpanel | Drawing Link |
|---------------------------|----------|--|--------------|-------------|---------------------------|--------------------------|---------------------------|---------------------|
| JW806HLL | \$189.00 | 9.62 x 7.50 x 4.74 [244 x 191 x 120] | 3.50 [1.59] | 1 | BP86CS | BP86FG | BP86AL | PDF |
| JW1008HLL | \$219.00 | 11.62 x 9.41 x 4.25 [295 x 239 x 108] | 5.00 [2.27] | 2 | BP108CS | BP108FG | BP108AL | PDF |
| JW1210HLL | \$254.00 | 13.56 x 11.43 x 5.21 [344 x 290 x 132] | 6.50 [2.95] | 2 | BP1210CS | BP1210FG | BP1210AL | PDF |
| JW1412HLL | \$351.00 | 15.50 x 13.50 x 6.25 [394 x 343 x 159] | 8.50 [3.85] | 2 | BP1412CS | BP1412FG | BP1412AL | PDF |
| JW1614HLL | \$385.00 | 17.53 x 15.46 x 6.23 [445 x 393 x 158] | 11.50 [5.22] | 2 | BP1614CS | BP1614FG | BP1614AL | PDF |
| JW1816HLL | \$473.00 | 19.62 x 17.61 x 8.82 [498 x 447 x 224] | 19.25 [8.73] | 2 | BP1816CS | BP1816FG | BP1816AL | PDF |
| JW2016HLL | \$763.00 | 22.00 x 17.68 x 8.83 [559 x 449 x 224] | 21.00 [9.52] | 2 | BPJ2016CS | — | BPJ2016AL | PDF |

Notes: Subpanels must be ordered separately.
Dimensions in inches [millimeters].
Weight in pounds [kilograms].

JW Series Fiberglass Enclosures

Single-Door with Acrylic Window and Quick-Release Latches



JW604HPL

Construction

- Hot compression molded fiberglass reinforced polyester (thermoset)
- Poured polyurethane seamless gasket provides watertight, dust-tight environmental seal
- 304 stainless steel used on all external hardware
- Rounded edges, minimal protrusions or exposed pocket prevents accumulation of dust or debris
- Molded-in flange for easy mounting
- Raised bosses with brass inserts accepting #10-32 screws for optional panel mounting
- Workable material cuts, drills, punches and saws with ease and accuracy
- Scratch- and abrasion-resistant UVA acrylic flush bonded window
- Submersible, non-corrosive environmental design
- Full 180° door opening
- Non-conductive, UV-resistant
- 216 lb-in impact resistance per UL746C
- Smooth surface, no color variations, swirls or color pockets, no voids
- Full length stainless steel hinged cover with padlockable quick-release latches
- Color: Gray

Listings

- UL/cUL [File E64358]
- NEMA Types 1, 3R, 4X, 6P, and 12 [Files 508A, 50, and 50e]
- IEC 60529 Ratings IP66 [File E362920]
- UL 1741 [File E333478]
- CSA Standard C22.2 Types 1, 3R, 4X, 6P, and 12 [File LR069014]
- Temperature Range (-76°F to +274°F) (-60°C to +134°C)
- Window Temperature Range: -26°F to 170°F (-32°C to 76°C)
- Flammability Rating UL94-5VFlammability Rating window: UL94V-HB
- Flammability Rating UL94-5V
 - Self-extinguishing
 - Non-halogenated
 - Non-flame propagating
- NFPA No. 101 Flame Spread Class A (1)
- Impact Rating IK10

Certifications

- cULus, IEC, REACH
- Outdoor UV Exposure Rated [UL 746C (F1)]



Shipping Schedule

| | | | | |
|----------|------------|------------|-------------|-------------|
| Same day | 1 - 5 days | 1 - 7 days | 1 - 15 days | 1 - 20 days |
|----------|------------|------------|-------------|-------------|

Color indicates shipping lead time in business days.

JW Series Fiberglass Enclosures Single-Door with Acrylic Window and Quick-Release Latches

| Part Number | Price | Enclosure Overall Size HxWxD | Wt. | No. Latches | Carbon Steel Subpanel | Fiberglass Subpanel | Aluminum Subpanel | Drawing Link |
|----------------------------|----------|--|--------------|-------------|--------------------------|--------------------------|--------------------------|---------------------|
| JW604HPL | \$162.00 | 7.50 x 5.43 x 4.75 [191 x 138 x 121] | 2.50 [1.13] | 1 | BP64CS | — | BP64AL | PDF |
| JW606HPL | \$179.00 | 7.50 x 7.50 x 4.75 [191 x 191 x 121] | 2.75 [1.25] | 1 | BP66CS | — | BP66AL | PDF |
| JW806HPL | \$186.00 | 9.62 x 7.50 x 4.74 [244 x 191 x 120] | 3.50 [1.59] | 1 | BP86CS | BP86FG | BP86AL | PDF |
| JW1008HPL | \$215.00 | 11.62 x 9.41 x 4.25 [295 x 239 x 108] | 5.00 [2.27] | 2 | BP108CS | BP108FG | BP108AL | PDF |
| JW1210HPL | \$250.00 | 13.56 x 11.43 x 5.21 [344 x 290 x 132] | 6.50 [2.95] | 2 | BP1210CS | BP1210FG | BP1210AL | PDF |
| JW1412HPL | \$344.00 | 15.50 x 13.50 x 6.25 [394 x 343 x 159] | 8.50 [3.85] | 2 | BP1412CS | BP1412FG | BP1412AL | PDF |
| JW1614HPL | \$378.00 | 17.53 x 15.46 x 6.23 [445 x 393 x 158] | 11.50 [5.22] | 2 | BP1614CS | BP1614FG | BP1614AL | PDF |
| JW1816HPL* | \$464.00 | 19.62 x 17.61 x 8.82 [498 x 447 x 224] | 19.25 [8.73] | 2 | BP1816CS | BP1816FG | BP1816AL | PDF |

Notes: Subpanels must be ordered separately.
 Dimensions in inches [millimeters].
 Weight in pounds [kilograms].
 *1816 size is not 6P rated.

RJ Series Fiberglass Enclosures Raised Screw Cover

STÄHLIN
A ROBROY ENCLOSURES® BRAND



RJ806W

Construction

- Hot compression molded fiberglass reinforced polyester (thermoset)
- Poured polyurethane seamless gasket provides watertight, dust-tight environmental seal
- 304 stainless steel used on all external hardware
- Lift-off extended-depth cover with four screws
- Stainless steel beaded chain for cover retention
- Rounded edges, minimal protrusions or exposed pocket prevents accumulation of dust or debris
- Molded-in flange for easy mounting
- Raised bosses with brass inserts accepting #10-32 screws for optional panel mounting
- Workable material cuts, drills, punches and saws with ease and accuracy
- Non-conductive, UV-resistant
- 216 lb-in impact resistance per UL746C
- Smooth surface, no color variations, swirls or color pockets, no voids
- Submersible, non-corrosive environmental design
- Color: Gray

Listings

- UL/cUL [File E64358]
- NEMA Types 1, 3R, 4X, 6P, and 12 [Files 508A, 50, and 50e]
- IEC 60529 Ratings IP66 [File E362920]
- CSA Standard C22.2 Types 1, 3R, 4X, 6P, and 12 [File LR069014]
- UL 1741 [File E333478]
- Temperature Range (-76°F to +274°F) (-60°C to +134°C)
- Flammability Rating UL94-5V
 - Self-extinguishing
 - Non-halogenated
 - Non-flame propagating
- NFPA No. 101 Flame Spread Class A (1)
- Impact Rating IK10

Certifications

- cULus, IEC, REACH
- Outdoor UV Exposure Rated [UL 746C (F1)]



Shipping Schedule

Same day 1 - 5 days 1 - 7 days 1 - 15 days 1 - 20 days

Color indicates shipping lead time in business days.

RJ Series Fiberglass Enclosures – Raised Screw Cover

| Part Number | Price | Enclosure Overall Size HxWxD | Wt. | Carbon Steel Subpanel | Fiberglass Subpanel | Aluminum Subpanel | Drawing Link |
|----------------|----------|--|--------------|-----------------------|---------------------|-------------------|---------------------|
| <u>RJ606W</u> | \$137.00 | 7.50 x 7.53 x 6.32 [191 x 191 x 161] | 2.75 [1.25] | <u>BP66CS</u> | — | <u>BP66AL</u> | PDF |
| <u>RJ806W</u> | \$153.00 | 9.63 x 7.52 x 6.20 [245 x 191 x 157] | 3.50 [1.59] | <u>BP86CS</u> | <u>BP86FG</u> | <u>BP86AL</u> | PDF |
| <u>RJ1008W</u> | \$172.00 | 11.63 x 9.37 x 6.58 [295 x 238 x 167] | 5.00 [2.27] | <u>BP108CS</u> | <u>BP108FG</u> | <u>BP108AL</u> | PDF |
| <u>RJ1614W</u> | \$273.00 | 17.53 x 15.43 x 7.68 [445 x 392 x 195] | 11.50 [5.22] | <u>BP1614CS</u> | <u>BP1614FG</u> | <u>BP1614AL</u> | PDF |

Notes: Subpanels must be ordered separately.
Dimensions in inches [millimeters].
Weight in pounds [kilograms].

RJ Series Fiberglass Enclosures

Raised Hinged Screw Cover



RJ1210HW

Shipping Schedule

Same day 1 - 5 days 1 - 7 days 1 - 15 days 1 - 20 days
Color indicates shipping lead time in business days.

Construction

- Hot compression molded fiberglass reinforced polyester (thermoset)
- Poured polyurethane seamless gasket provides watertight, dust-tight environmental seal
- 304 stainless steel used on all external hardware
- Full length, stainless steel, hinged, extended-depth cover with two screws
- Rounded edges, minimal protrusions or exposed pocket prevents accumulation of dust or debris
- Molded-in flange for easy mounting
- Raised bosses with brass inserts accepting #10-32 screws for optional panel mounting
- Workable material cuts, drills, punches and saws with ease and accuracy
- Full 180° door opening
- Non-conductive, UV-resistant
- 216 lb-in impact resistance per UL746C
- Smooth surface, no color variations, swirls or color pockets, no voids
- Submersible, non-corrosive environmental design
- Color: Gray

Listings

- UL/cUL [File E64358]
- NEMA Types 1, 3R, 4X, 6P, and 12 [Files 508A, 50, and 50e]
- IEC 60529 Ratings IP66 [File E362920]
- UL 1741 [File E333478]
- CSA Standard C22.2 Types 1, 3R, 4X, 6P, and 12 [File LR069014]
- Temperature Range (-76°F to +274°F) (-60°C to +134°C)
- Flammability Rating UL94-5V
 - Self-extinguishing
 - Non-halogenated
 - Non-flame propagating
- NFPA No. 101 Flame Spread Class A (1)
- Impact Rating IK10

Certifications

- cULus, IEC, REACH
- Outdoor UV Exposure Rated [UL 746C (F1)]



RJ Series Fiberglass Enclosures – Raised Hinged Screw Cover

| Part Number | Price | Enclosure Overall Size HxWxD | Wt. | Carbon Steel Subpanel | Fiberglass Subpanel | Aluminum Subpanel | Drawing Link |
|--------------------------|----------|---|--------------|--------------------------|--------------------------|--------------------------|---------------------|
| RJ806HW | \$162.00 | 9.63 x 7.52 x 6.20 [245 x 191 x 157] | 3.50 [1.59] | BP86CS | BP86FG | BP86AL | PDF |
| RJ1008HW | \$192.00 | 11.63 x 9.37 x 6.58 [295 x 238 x 167] | 5.00 [2.27] | BP108CS | BP108FG | BP108AL | PDF |
| RJ1210HW | \$221.00 | 13.56 x 11.43 x 6.58 [344 x 290 x 167] | 6.50 [2.95] | BP1210CS | BP1210FG | BP1210AL | PDF |
| RJ1412HW | \$246.00 | 15.50 x 13.38 x 7.69 [394 x 340 x 195] | 8.50 [3.85] | BP1412CS | BP1412FG | BP1412AL | PDF |
| RJ1614HW | \$289.00 | 17.53 x 15.43 x 7.68 [445 x 392 x 195] | 11.50 [5.22] | BP1614CS | BP1614FG | BP1614AL | PDF |
| RJ1816HW | \$375.00 | 19.63 x 17.48 x 10.63 [499 x 444 x 270] | 19.25 [8.73] | BP1816CS | BP1816FG | BP1816AL | PDF |

Notes: Subpanels must be ordered separately.
Dimensions in inches [millimeters].
Weight in pounds [kilograms].

RJ Series Fiberglass Enclosures

Raised Cover Single-Door with Twist-Lock Latches



RJ1210HLL

Construction

- Hot compression molded fiberglass reinforced polyester (thermoset)
- Poured polyurethane seamless gasket provides watertight, dust-tight environmental seal
- 304 stainless steel used on all external hardware
- Rounded edges, minimal protrusions or exposed pocket prevents accumulation of dust or debris
- Molded-in flange for easy mounting
- Raised bosses with brass inserts accepting #10-32 screws for optional panel mounting
- Workable material cuts, drills, punches and saws with ease and accuracy
- Full length, stainless steel, hinged, extended-depth cover with twist-lock latches
- Full 180° door opening
- Non-conductive, UV-resistant
- 216 lb-in impact resistance per UL746C
- Smooth surface, no color variations, swirls or color pockets, no voids
- Submersible, non-corrosive environmental design
- Color: Gray

Listings

- UL/cUL [File E64358]
- NEMA Types 1, 3R, 4X, 6P, and 12 [Files 508A, 50, and 50e]
- IEC 60529 Ratings IP66 [File E362920]
- CSA Standard C22.2 Types 1, 3R, 4X, 6P, and 12 [File LR069014]
- UL 1741 [File E333478]
- Temperature Range (-76°F to +274°F) (-60°C to +134°C)
- Flammability Rating UL94-5V
- NFPA No. 101 Flame Spread Class A (1)
- Impact Rating IK10

Certifications

- cULus, IEC, REACH
- Outdoor UV Exposure Rated [UL 746C (F1)]



| Shipping Schedule | | | | |
|-------------------|------------|------------|-------------|-------------|
| Same day | 1 - 5 days | 1 - 7 days | 1 - 15 days | 1 - 20 days |

Color indicates shipping lead time in business days.

| RJ Series Fiberglass Enclosures – Raised Single-Door with Twist-Lock Latches | | | | | | | | |
|--|----------|---|--------------|-------------|---------------------------|--------------------------|---------------------------|---------------------|
| Part Number | Price | Enclosure Overall Size HxWxD | Wt. | No. Latches | Carbon Steel Subpanel | Fiberglass Subpanel | Aluminum Subpanel | Drawing Link |
| RJ604HLL | \$193.00 | 7.47 x 5.47 x 6.21 [190 x 139 x 158] | 2.50 [1.13] | 1 | BP64CS | — | BP64AL | PDF |
| RJ606HLL | \$200.00 | 7.50 x 7.53 x 6.32 [191 x 191 x 161] | 2.75 [1.25] | 1 | BP66CS | — | BP66AL | PDF |
| RJ806HLL | \$202.00 | 9.63 x 7.52 x 6.20 [245 x 191 x 157] | 3.50 [1.59] | 1 | BP86CS | BP86FG | BP86AL | PDF |
| RJ1008HLL | \$219.00 | 11.63 x 9.37 x 6.58 [295 x 238 x 167] | 5.00 [2.27] | 2 | BP108CS | BP108FG | BP108AL | PDF |
| RJ1210HLL | \$253.00 | 13.56 x 11.43 x 6.58 [344 x 290 x 167] | 6.50 [2.95] | 2 | BP1210CS | BP1210FG | BP1210AL | PDF |
| RJ1412HLL | \$315.00 | 15.50 x 13.38 x 7.69 [394 x 340 x 195] | 8.50 [3.85] | 2 | BP1412CS | BP1412FG | BP1412AL | PDF |
| RJ1614HLL | \$334.00 | 17.53 x 15.43 x 7.68 [445 x 392 x 195] | 11.50 [5.22] | 2 | BP1614CS | BP1614FG | BP1614AL | PDF |
| RJ1816HLL | \$434.00 | 19.63 x 17.48 x 10.63 [499 x 444 x 270] | 19.25 [8.73] | 2 | BP1816CS | BP1816FG | BP1816AL | PDF |
| RJ2016HLL | \$748.00 | 22.00 x 17.56 x 10.63 [559 x 446 x 270] | 21.00 [9.52] | 2 | BPJ2016CS | — | BPJ2016AL | PDF |

Notes: Subpanels must be ordered separately.
 Dimensions in inches [millimeters].
 Weight in pounds [kilograms].

RJ Series Fiberglass Enclosures

Raised Cover Single-Door with Quick-Release Latches

STÄHLIN
A ROBROY ENCLOSURES® BRAND



RJ1210HPL

Construction

- Hot compression molded fiberglass reinforced polyester (thermoset)
- Poured polyurethane seamless gasket provides watertight, dust-tight environmental seal
- 304 stainless steel used on all external hardware
- Rounded edges, minimal protrusions or exposed pocket prevents accumulation of dust or debris
- Molded-in flange for easy mounting
- Raised bosses with brass inserts accepting #10-32 screws for optional panel mounting
- Workable material cuts, drills, punches and saws with ease and accuracy
- Full length, stainless steel, hinged extended-depth cover with padlockable, quick-release latches
- Full 180° door opening
- Non-conductive, UV-resistant
- 216 lb-in impact resistance per UL746C
- Smooth surface, no color variations, swirls or color pockets, no voids
- Submersible, non-corrosive environmental design
- Color: Gray

Listings

- UL/cUL [File E64358]
- NEMA Types 1, 3R, 4X, 6P, and 12 [Files 508A, 50, and 50e]
- IEC 60529 Ratings IP66 [File E362920]
- CSA Standard C22.2 Types 1, 3R, 4X, 6P, and 12 [File LR069014]
- UL 1741 [File E333478]
- Temperature Range (-76°F to +274°F) (-60°C to +134°C)
- Flammability Rating UL94-5V
- NFPA No. 101 Flame Spread Class A (1)
- Impact Rating IK10

Certifications

- cULus, IEC, REACH
- Outdoor UV Exposure Rated [UL 746C (F1)]



Shipping Schedule

| | | | | |
|----------|------------|------------|-------------|-------------|
| Same day | 1 - 5 days | 1 - 7 days | 1 - 15 days | 1 - 20 days |
|----------|------------|------------|-------------|-------------|

Color indicates shipping lead time in business days.

RJ Series Fiberglass Enclosures – Raised Cover Single-Door with Quick-Release Latches

| Part Number | Price | Enclosure Overall Size HxWxD | Wt | No. Latches | Carbon Steel Subpanel | Fiberglass Subpanel | Aluminum Subpanel | Drawing Link |
|---------------------------|----------|---|--------------|-------------|---------------------------|--------------------------|---------------------------|---------------------|
| RJ604HPL | \$187.00 | 7.47 x 5.47 x 6.21 [190 x 139 x 158] | 2.50 [1.13] | 1 | BP64CS | — | BP64AL | PDF |
| RJ606HPL | \$194.00 | 7.50 x 7.53 x 6.32 [191 x 191 x 161] | 2.75 [1.25] | 1 | BP66CS | — | BP66AL | PDF |
| RJ808HPL | \$205.00 | 9.56 x 9.38 x 6.25 [243 x 238 x 159] | 4.00 [1.81] | 1 | BP88CS | — | — | PDF |
| RJ806HPL | \$197.00 | 9.63 x 7.52 x 6.20 [245 x 191 x 157] | 3.50 [1.59] | 1 | BP86CS | BP86FG | BP86AL | PDF |
| RJ1008HPL | \$213.00 | 11.63 x 9.37 x 6.58 [295 x 238 x 167] | 5.00 [2.27] | 2 | BP108CS | BP108FG | BP108AL | PDF |
| RJ1210HPL | \$246.00 | 13.56 x 11.43 x 6.58 [344 x 290 x 167] | 6.50 [2.95] | 2 | BP1210CS | BP1210FG | BP1210AL | PDF |
| RJ1412HPL | \$306.00 | 15.50 x 13.38 x 7.69 [394 x 340 x 195] | 8.50 [3.85] | 2 | BP1412CS | BP1412FG | BP1412AL | PDF |
| RJ1614HPL | \$324.00 | 17.53 x 15.43 x 7.68 [445 x 392 x 195] | 11.50 [5.22] | 2 | BP1614CS | BP1614FG | BP1614AL | PDF |
| RJ1816HPL | \$422.00 | 19.63 x 17.48 x 10.63 [499 x 444 x 270] | 19.25 [8.73] | 2 | BP1816CS | BP1816FG | BP1816AL | PDF |
| RJ2016HPL | \$693.00 | 22.00 x 17.56 x 10.63 [559 x 446 x 270] | 21.00 [9.52] | 2 | BPJ2016CS | — | BPJ2016AL | PDF |

Notes: Subpanels must be ordered separately.
Dimensions in inches [millimeters].
Weight in pounds [kilograms].

RJW Series Fiberglass Enclosures

Raised Cover Single-Door with Acrylic Window and Twist-Lock Latches



RJW1412HLL

Construction

- Hot compression molded fiberglass reinforced polyester (thermoset)
- Poured polyurethane seamless gasket provides watertight, dust-tight environmental seal
- 304 stainless steel used on all external hardware
- Twist-lock latches
- Rounded edges, minimal protrusions or exposed pocket prevents accumulation of dust or debris
- Molded-in flange for easy mounting
- Raised bosses with brass inserts accepting #10-32 screws for optional panel mounting
- Workable material cuts, drills, punches and saws with ease and accuracy
- Full length, stainless steel, hinged, extended-depth door with twist-lock latches
- Full 180° door opening
- Non-conductive, UV-resistant
- 216 lb-in impact resistance per UL746C
- Smooth surface, no color variations, swirls or color pockets, no voids
- Scratch- and abrasion-resistant UVA acrylic flush-bonded window
- Submersible, non-corrosive environmental design
- Color: Gray

Listings

- UL/cUL [File E64358]
- NEMA Types 1, 3R, 4X, 6P, and 12 [Files 508A, 50, and 50e]
- IEC 60529 Ratings IP66 [File E362920]
- UL 1741 [File E333478]
- CSA Standard C22.2 Types 1, 3R, 4X, 6P, and 12 per CSA File #LR069014
- Temperature Range (-76°F to +274°F) (-60°C to +134°C)
- Window Temperature Range: -26°F to 170°F (-32°C to 76°C)
- Flammability Rating UL94-5VFlammability Rating window: UL94V-HB
- Flammability Rating UL94-5V
- NFPA No. 101 Flame Spread Class A (1)
- Impact Rating IK10

Certifications

- cULus, IEC, REACH
- Outdoor UV Exposure Rated [UL 746C (F1)]



Shipping Schedule

Same day 1 - 5 days 1 - 7 days 1 - 15 days 1 - 20 days

Color indicates shipping lead time in business days.

RJW Series Fiberglass Enclosures – Raised Cover Single-Door with Acrylic Window and Twist-Lock Latches

| Part Number | Price | Enclosure Overall Size HxWxD | Wt. | No. Latches | Carbon Steel Subpanel | Fiberglass Subpanel | Aluminum Subpanel | Drawing Link |
|----------------------------|----------|---|--------------|-------------|--------------------------|--------------------------|--------------------------|---------------------|
| RJW1412HLL | \$552.00 | 15.50 x 13.38 x 7.69 [394 x 340 x 195] | 8.50 [3.85] | 2 | BP1412CS | BP1412FG | BP1412AL | PDF |
| RJW1614HLL | \$606.00 | 17.53 x 15.43 x 7.68 [445 x 392 x 195] | 11.50 [5.22] | 2 | BP1614CS | BP1614FG | BP1614AL | PDF |
| RJW1816HLL | \$744.00 | 19.63 x 17.48 x 10.63 [499 x 444 x 270] | 19.25 [8.73] | 2 | BP1816CS | BP1816FG | BP1816AL | PDF |

Notes: Subpanels must be ordered separately.
Dimensions in inches [millimeters].
Weight in pounds [kilograms].

RJW Series Fiberglass Enclosures

Raised Cover Single-Door with Acrylic Window and Quick-Release Latches



RJW1412HPL

Construction

- Hot compression molded fiberglass reinforced polyester (thermoset)
- Poured polyurethane seamless gasket provides watertight, dust-tight environmental seal
- 304 stainless steel used on all external hardware
- Rounded edges, minimal protrusions or exposed pocket prevents accumulation of dust or debris
- Molded-in flange for easy mounting
- Raised bosses with brass inserts accepting #10-32 screws for optional panel mounting
- Workable material cuts, drills, punches and saws with ease and accuracy
- Full-length, stainless steel, hinged, extended-depth door with padlockable, quick-release latches
- Scratch- and abrasion-resistant UVA acrylic flush-bonded window
- Full 180° door opening
- Non-conductive, UV-resistant
- 216 lb-in impact resistance per UL746C
- Smooth surface, no color variations, swirls or color pockets, no voids
- Submersible, non-corrosive environmental design
- Color: Gray

Listings

- UL/cUL [File E64358]
- NEMA Types 1, 3R, 4X, 6P, and 12 [Files 508A, 50, and 50e]
- IEC 60529 Ratings IP66 [File E362920]
- UL 1741 [File E333478]
- CSA Standard C22.2 Types 1, 3R, 4X, 6P, and 12 [File LR069014]
- Temperature Range (-76°F to +274°F) (-60°C to +134°C)
- Window Temperature Range: -26°F to 170°F (-32°C to 76°C)
- Flammability Rating UL94-5V Flammability Rating window: UL94V-HB
- Flammability Rating UL94-5V
- NFPA No. 101 Flame Spread Class A (1) Impact Rating IK10

Certifications

- cULus, IEC, REACH
- Outdoor UV Exposure Rated [UL 746C (F1)]



Shipping Schedule

| | | | | |
|----------|------------|------------|-------------|-------------|
| Same day | 1 - 5 days | 1 - 7 days | 1 - 15 days | 1 - 20 days |
|----------|------------|------------|-------------|-------------|

Color indicates shipping lead time in business days.

RJW Series Fiberglass Enclosures – Raised Cover Single-Door with Acrylic Window and Quick-Release Latches

| Part Number | Price | Enclosure Overall Size HxWxD | Wt. | No. Latches | Carbon Steel Subpanel | Fiberglass Subpanel | Aluminum Subpanel | Drawing Link |
|----------------------------|------------|---|--------------|-------------|---------------------------|--------------------------|---------------------------|---------------------|
| RJW806HPL | \$308.00 | 9.63 x 7.52 x 6.20 [245 x 191 x 157] | 3.50 [1.59] | 1 | BP86CS | BP86FG | BP86AL | PDF |
| RJW1008HPL | \$352.00 | 11.63 x 9.37 x 6.58 [295 x 238 x 167] | 5.00 [2.27] | 2 | BP108CS | BP108FG | BP108AL | PDF |
| RJW1210HPL | \$409.00 | 13.56 x 11.43 x 6.58 [344 x 290 x 167] | 6.50 [2.95] | 2 | BP1210CS | BP1210FG | BP1210AL | PDF |
| RJW1412HPL | \$563.00 | 15.50 x 13.38 x 7.69 [394 x 340 x 195] | 8.50 [3.85] | 2 | BP1412CS | BP1412FG | BP1412AL | PDF |
| RJW1614HPL | \$642.00 | 17.53 x 15.43 x 7.68 [445 x 392 x 195] | 11.50 [5.22] | 2 | BP1614CS | BP1614FG | BP1614AL | PDF |
| RJW1816HPL | \$759.00 | 19.63 x 17.48 x 10.63 [499 x 444 x 270] | 19.25 [8.73] | 2 | BP1816CS | BP1816FG | BP1816AL | PDF |
| RJW2016HPL | \$1,197.00 | 22.00 x 17.56 x 10.63 [559 x 446 x 270] | 21.00 [9.52] | 2 | BPJ2016CS | — | BPJ2016AL | PDF |

Notes: Subpanels must be ordered separately.
 Dimensions in inches [millimeters].
 Weight in pounds [kilograms].

FatBoy Series Fiberglass Enclosures

Extra-Deep Single-Door with Padlocking Twist-Lock Latches



J10088SSH

Construction

- Hot compression molded fiberglass reinforced polyester (thermoset)
- Poured polyurethane seamless gasket provides watertight, dust-tight environmental seals
- 304 stainless steel used on all external hardware
- Rounded edges, minimal protrusions or exposed pocket prevents accumulation of dust or debris
- Molded-in flange for easy mounting
- Raised bosses with brass inserts accepting #10-32 screws for optional panel mounting
- Panel mounting points inside the door correspond to rear subpanel size
- Workable material cuts, drills, punches and saws with ease and accuracy
- Clamshell-style cover
- Full length, stainless steel, hinged door with padlockable twist-lock latches
- Full 180° door opening
- Non-conductive, UV-resistant
- 216 lb-in impact resistance per UL746C
- Smooth surface, no color variations, swirls or color pockets, no voids
- Color: Gray

Listings

- UL/cUL [File E64358]
- NEMA Types 1, 3, 4X, and 12 [Files 508A, 50, and 50e]
- IEC 60529 Ratings IP66 [File E362920]
- UL 1741 [File E333478]
- CSA Standard C22.2 Types 1, 3, 4X, and 12 [File LR069014]
- Temperature Range (-76°F to +274°F) (-60°C to +134°C)
- Flammability Rating UL94-5V
- NFPA No. 101 Flame Spread Class A (1)
- Impact Rating IK10

Certifications

- cULus, IEC, REACH
- Outdoor UV Exposure Rated [UL 746C (F1)]



Shipping Schedule

| | | | | |
|----------|------------|------------|-------------|-------------|
| Same day | 1 - 5 days | 1 - 7 days | 1 - 15 days | 1 - 20 days |
|----------|------------|------------|-------------|-------------|

Color indicates shipping lead time in business days.

FatBoy Series Fiberglass Enclosures – Extra-Deep Single-Door with Padlocking Twist-Lock Latches

| Part Number | Price | Enclosure Overall Size (HxWxD) | Wt. | No. Latches | Carbon Steel Subpanel | Fiberglass Subpanel | Aluminum Subpanel | Drawing Link |
|-------------------|----------|---|--------------|-------------|-----------------------|---------------------|-------------------|---------------------|
| J8068SSH | \$286.00 | 9.63 x 6.85 x 9.06 [245 x 174 x 230] | 4.00 [1.81] | 1 | BP86CS | BP86FG | BP86AL | PDF |
| J8088SSH | \$305.00 | 9.56 x 8.84 x 9.44 [243 x 225 x 240] | 5.00 [2.27] | 1 | BP88CS | — | — | PDF |
| J10088SSH | \$327.00 | 11.63 x 8.84 x 8.09 [295 x 225 x 205] | 5.25 [2.38] | 1 | BP108CS | BP108FG | BP108AL | PDF |
| J121010SSH | \$357.00 | 13.56 x 10.93 x 10.06 [344 x 278 x 256] | 8.00 [3.63] | 1 | BP1210CS | BP1210FG | BP1210AL | PDF |
| J141212SSH | \$464.00 | 15.50 x 12.83 x 12.06 [394 x 326 x 306] | 12.00 [5.44] | 2 | BP1412CS | BP1412FG | BP1412AL | PDF |
| J161412SSH | \$489.00 | 17.53 x 14.94 x 12.07 [445 x 379 x 307] | 14.00 [6.35] | 2 | BP1614CS | BP1614FG | BP1614AL | PDF |
| J181617SSH | \$612.00 | 19.63 x 16.92 x 17.19 [499 x 430 x 437] | 22.00 [9.98] | 2 | BP1816CS | BP1816FG | BP1816AL | PDF |

Notes: Subpanels must be ordered separately.
 Dimensions in inches [millimeters].
 Weight in pounds [kilograms].

Classic Series Fiberglass Enclosures

Crowned Screw Cover



CL907W

Construction

- Hot compression molded fiberglass reinforced polyester (thermoset)
- Poured polyurethane seamless gasket provides watertight, dust-tight environmental seal
- 304 stainless steel used on all external hardware
- Rounded edges, minimal protrusions or exposed pocket prevents accumulation of dust or debris
- Raised bosses with brass inserts accepting #10-32 screws for optional panel mounting
- Workable material cuts, drills, punches and saws with ease and accuracy
- Four recessed cover screws
- Lift-off cover
- Non-conductive, UV-resistant
- 216 lb-in impact resistance per UL746C
- Smooth surface, no color variations, swirls or color pockets, no voids
- Color: Gray

Listings

- UL/cUL [File E64358]
- NEMA Types 1, 3, 3S, 3R, 4X, and 12 [Files 508A, 50, and 50e]
- CSA Standard C22.2 Types 1, 3, 3S, 3R, 4X, and 12 [File LR069014]
- UL 1741 [File E333478]
- Temperature Range (-76°F to +274°F) (-60°C to +134°C)
- Flammability Rating UL94-5V
- NFPA No. 101 Flame Spread Class A (1)

Certifications

- UL, CSA, CE, REACH
- Outdoor UV Exposure Rated [UL 746C (F1)]



Shipping Schedule

| | | | | |
|----------|------------|------------|-------------|-------------|
| Same day | 1 - 5 days | 1 - 7 days | 1 - 15 days | 1 - 20 days |
|----------|------------|------------|-------------|-------------|

Color indicates shipping lead time in business days.

Classic Series Fiberglass Enclosures – Crowned Screw Cover

| Part Number | Price | Enclosure Overall Size HxWxD | Wt. | Carbon Steel Subpanel | Fiberglass Subpanel | Aluminum Subpanel | Drawing Link |
|-------------|----------|--|-------------|-----------------------|---------------------|-------------------|--------------|
| CL707W | \$263.00 | 7.21 x 7.21 x 5.09 [183 x 183 x 129] | 3.00 [1.36] | BP66CS | — | BP66AL | PDF |
| CL907W | \$279.00 | 9.21 x 7.21 x 5.09 [234 x 183 x 129] | 4.00 [1.81] | BP86CS | BP86FG | BP86AL | PDF |
| CL1109W | \$297.00 | 11.21 x 9.21 x 6.09 [285 x 234 x 155] | 5.00 [2.27] | BP108CS | BP108FG | BP108AL | PDF |
| CL1311W | \$324.00 | 13.21 x 11.21 x 6.59 [336 x 285 x 167] | 7.00 [3.17] | BP1210CS | BP1210FG | BP1210AL | PDF |
| CL1513W | \$382.00 | 15.21 x 13.21 x 7.09 [386 x 336 x 180] | 9.00 [4.08] | BP1412CS | BP1412FG | BP1412AL | PDF |

Notes: Subpanels must be ordered separately.
 Dimensions in inches [millimeters].
 Weight in pounds [kilograms].

Classic Series Fiberglass Enclosures

Crowned Hinged Screw Cover



CL907HW

Construction

- Hot compression molded fiberglass reinforced polyester (thermoset)
- Poured polyurethane seamless gasket provides watertight, dust-tight environmental seal
- 304 stainless steel used on all external hardware
- Rounded edges, minimal protrusions or exposed pocket prevents accumulation of dust or debris
- Raised bosses with brass inserts accepting #10-32 screws for optional panel mounting
- Workable material cuts, drills, punches and saws with ease and accuracy
- Full length, stainless steel, hinged cover with two recessed cover screws
- Non-conductive, UV-resistant
- 216 lb-in impact resistance per UL746C
- Smooth surface, no color variations, swirls or color pockets, no voids
- Color: Gray

Listings

- UL/cUL [File E64358]
- NEMA Types 1, 3, 3S, 3R, 4X, and 12 [Files 508A, 50, and 50e]
- CSA Standard C22.2 Types 1, 3, 3S, 3R, 4X, and 12 [File LR069014]
- UL 1741 [File E333478]
- Temperature Range (-76°F to +274°F) (-60°C to +134°C)
- Flammability Rating UL94-5V
- NFPA No. 101 Flame Spread Class A (1)

Certifications

- UL, CSA, CE, REACH
- Outdoor UV Exposure Rated [UL 746C (F1)]



Shipping Schedule

| | | | | |
|----------|------------|------------|-------------|-------------|
| Same day | 1 - 5 days | 1 - 7 days | 1 - 15 days | 1 - 20 days |
|----------|------------|------------|-------------|-------------|

Color indicates shipping lead time in business days.

Classic Series Fiberglass Enclosures – Crowned Hinged Screw Cover

| Part Number | Price | Enclosure Overall Size HxWxD | Wt. | Carbon Steel Subpanel | Fiberglass Subpanel | Aluminum Subpanel | Drawing Link |
|-----------------|----------|--|-------------|-----------------------|---------------------|-------------------|---------------------|
| CL707HW | \$278.00 | 7.21 x 7.21 x 5.09 [183 x 183 x 129] | 3.00 [1.36] | BP66CS | — | BP66AL | PDF |
| CL907HW | \$296.00 | 9.21 x 7.21 x 5.09 [234 x 183 x 129] | 4.00 [1.81] | BP86CS | BP86FG | BP86AL | PDF |
| CL1109HW | \$313.00 | 11.21 x 9.21 x 6.09 [285 x 234 x 155] | 5.00 [2.27] | BP108CS | BP108FG | BP108AL | PDF |
| CL1513HW | \$403.00 | 15.21 x 13.21 x 7.09 [386 x 336 x 180] | 9.00 [4.08] | BP1412CS | BP1412FG | BP1412AL | PDF |
| CL1311HW | \$348.00 | 13.21 x 11.21 x 6.59 [336 x 285 x 167] | 7.00 [3.17] | BP1210CS | BP1210FG | BP1210AL | PDF |

Notes: Subpanels must be ordered separately.
 Dimensions in inches [millimeters].
 Weight in pounds [kilograms].

Classic Series Fiberglass Enclosures

Crowned Single-Door with 1/4-Turn Latch



CL707HL

Construction

- Hot compression molded fiberglass reinforced polyester (thermoset)
- Poured polyurethane seamless gasket provides watertight, dust-tight environmental seal
- 304 stainless steel used on all external hardware
- Rounded edges, minimal protrusions or exposed pocket prevents accumulation of dust or debris
- Raised bosses with brass inserts accepting #10-32 screws for optional panel mounting
- Workable material cuts, drills, punches and saws with ease and accuracy
- Hinged cover with 1/4-turn latch
- Full 180° door opening
- Non-conductive, UV-resistant
- 216 lb-in impact resistance per UL746C
- Smooth surface, no color variations, swirls or color pockets, no voids
- Color: Gray

Listings

- UL/cUL [File E64358]
- NEMA Types 1, 3, 3S, 3R, 4X, and 12 [Files 508A, 50, and 50e]
- CSA Standard C22.2 Types 1, 3, 3S, 3R, 4X, and 12 [File LR069014]
- UL 1741 [File E333478]
- Temperature Range (-76°F to +274°F) (-60°C to +134°C)
- Flammability Rating UL94-5V
- NFPA No. 101 Flame Spread Class A (1)

Certifications

- UL, CSA, CE, REACH
- Outdoor UV Exposure Rated [UL 746C (F1)]



| Shipping Schedule | | | | |
|--|------------|------------|-------------|-------------|
| Same day | 1 - 5 days | 1 - 7 days | 1 - 15 days | 1 - 20 days |
| Color indicates shipping lead time in business days. | | | | |

| Classic Fiberglass Enclosures – Crowned Single-Door with 1/4-Turn Latch | | | | | | | | |
|---|----------|--|-------------|-------------|--------------------------|--------------------------|--------------------------|---------------------|
| Part Number | Price | Enclosure Overall Size HxWxD | Wt. | No. Latches | Carbon Steel Subpanel | Fiberglass Subpanel | Aluminum Subpanel | Drawing Link |
| CL707HL | \$397.00 | 7.21 x 7.21 x 5.09 [183 x 183 x 129] | 3.00 [1.36] | <u>1</u> | BP66CS | — | BP66AL | PDF |
| CL907HL | \$436.00 | 9.21 x 7.21 x 5.09 [234 x 183 x 129] | 4.00 [1.81] | <u>1</u> | BP86CS | BP86FG | BP86AL | PDF |
| CL1109HL | \$432.00 | 11.21 x 9.21 x 6.09 [285 x 234 x 155] | 5.00 [2.27] | <u>1</u> | BP108CS | BP108FG | BP108AL | PDF |
| CL1311HL | \$459.00 | 13.21 x 11.21 x 6.59 [336 x 285 x 167] | 7.00 [3.17] | <u>1</u> | BP1210CS | BP1210FG | BP1210AL | PDF |
| CL1513HL | \$527.00 | 15.21 x 13.21 x 7.09 [386 x 336 x 180] | 9.00 [4.08] | <u>1</u> | BP1412CS | BP1412FG | BP1412AL | PDF |

Notes: Subpanels must be ordered separately.
 Dimensions in inches [millimeters].
 Weight in pounds [kilograms].

Classic Series Fiberglass Enclosures

Crowned Single-Door with Twist-Lock Latch



CL1311HLL

Construction

- Hot compression molded fiberglass reinforced polyester (thermoset)
- Poured polyurethane seamless gasket provides watertight, dust-tight environmental seal
- 304 stainless steel used on all external hardware
- Rounded edges, minimal protrusions or exposed pocket prevents accumulation of dust or debris
- Raised bosses with brass inserts accepting #10-32 screws for optional panel mounting
- Workable material cuts, drills, punches and saws with ease and accuracy
- Hinged cover with twist-lock latches
- Full 180° door opening
- Non-conductive, UV-resistant
- 216 lb-in impact resistance per UL746C
- Smooth surface, no color variations, swirls or color pockets, no voids
- Color: Gray

Listings

- UL/cUL [File E64358]
- NEMA Types 1, 3, 3S, 3R, 4X, and 12 [Files 508A, 50, and 50e]
- CSA Standard C22.2 Types 1, 3, 3S, 3R, 4X, and 12 [File LR069014]
- UL 1741 [File E333478]
- Temperature Range (-76°F to +274°F) (-60°C to +134°C)
- Flammability Rating UL94-5V
- NFPA No. 101 Flame Spread Class A (1)

Certifications

- UL, CSA, CE, REACH
- Outdoor UV Exposure Rated [UL 746C (F1)]



Shipping Schedule

| | | | | |
|----------|------------|------------|-------------|-------------|
| Same day | 1 - 5 days | 1 - 7 days | 1 - 15 days | 1 - 20 days |
|----------|------------|------------|-------------|-------------|

Color indicates shipping lead time in business days.

Classic Series Fiberglass Enclosures – Crowned Single-Door with Twist-Lock Latch

| Part Number | Price | Enclosure Overall Size HxWxD | Wt. | No. Latches | Carbon Steel Subpanel | Fiberglass Subpanel | Aluminum Subpanel | Drawing Link |
|---------------------------|----------|--|-------------|-------------|--------------------------|--------------------------|--------------------------|---------------------|
| CL1311HLL | \$399.00 | 13.21 x 11.21 x 6.59 [336 x 285 x 167] | 7.00 [3.17] | 1 | BP1210CS | BP1210FG | BP1210AL | PDF |
| CL1513HLL | \$489.00 | 15.21 x 13.21 x 7.09 [386 x 336 x 180] | 9.00 [4.08] | 2 | BP1412CS | BP1412FG | BP1412AL | PDF |

Notes: Subpanels must be ordered separately.
 Dimensions in inches [millimeters].
 Weight in pounds [kilograms].

Classic Series Fiberglass Enclosures

Crowned Single-Door with Quick-Release Latch



[CL1513HPL](#)

Construction

- Hot compression molded fiberglass reinforced polyester (thermoset)
- Poured polyurethane seamless gasket provides watertight, dust-tight environmental seal
- 304 stainless steel used on all external hardware
- Rounded edges, minimal protrusions or exposed pocket prevents accumulation of dust or debris
- Raised bosses with brass inserts accepting #10-32 screws for optional panel mounting
- Workable material cuts, drills, punches and saws with ease and accuracy
- Hinged cover with padlockable quick-release latches
- Full 180° door opening
- Non-conductive, UV-resistant
- 216 lb-in impact resistance per UL746C
- Smooth surface, no color variations, swirls or color pockets, no voids
- Color: Gray

Listings

- UL/cUL [File E64358]
- NEMA Types 1, 3, 3S, 3R, 4X, and 12 [Files 508A, 50, and 50e]
- CSA Standard C22.2 Types 1, 3, 3S, 3R, 4X, and 12 [File LR069014]
- UL 1741 [File E333478]
- Temperature Range (-76°F to +274°F) (-60°C to +134°C)
- Flammability Rating UL94-5V
- NFPA No. 101 Flame Spread Class A (1)

Certifications

- UL, CSA, CE, REACH
- Outdoor UV Exposure Rated [UL 746C (F1)]



Shipping Schedule

Same day 1 - 5 days 1 - 7 days 1 - 15 days 1 - 20 days

Color indicates shipping lead time in business days.

Classic Series Fiberglass Enclosures – Crowned Single-Door with Quick-Release Latch

| Part Number | Price | Enclosure Overall Size HxWxD | Wt. | No. Latches | Carbon Steel Subpanel | Fiberglass Subpanel | Aluminum Subpanel | Drawing Link |
|---------------------------|----------|--|-------------|-------------|--------------------------|--------------------------|--------------------------|---------------------|
| CL707HPL | \$325.00 | 7.21 x 7.21 x 5.09 [183 x 183 x 129] | 3.00 [1.36] | 1 | BP66CS | — | BP66AL | PDF |
| CL907HPL | \$343.00 | 9.21 x 7.21 x 5.09 [234 x 183 x 129] | 4.00 [1.81] | 1 | BP86CS | BP86FG | BP86AL | PDF |
| CL1109HPL | \$361.00 | 11.21 x 9.21 x 6.09 [285 x 234 x 155] | 5.00 [2.27] | 1 | BP108CS | BP108FG | BP108AL | PDF |
| CL1311HPL | \$390.00 | 13.21 x 11.21 x 6.59 [336 x 285 x 167] | 7.00 [3.17] | 1 | BP1210CS | BP1210FG | BP1210AL | PDF |
| CL1513HPL | \$478.00 | 15.21 x 13.21 x 7.09 [386 x 336 x 180] | 9.00 [4.08] | 2 | BP1412CS | BP1412FG | BP1412AL | PDF |

Notes: Subpanels must be ordered separately.
Dimensions in inches [millimeters].
Weight in pounds [kilograms].

N Series Fiberglass Enclosures

NEMA 1 and 3R Single-Door with Twist-Lock Latches



N302410RT

Construction

- Hot compression molded fiberglass reinforced polyester, hand layup FRP
- Poured polyurethane seamless gasket provides watertight, dust-tight environmental seal
- 304 stainless steel used on all external hardware
- Panel mounting capability for fixed rear panel
- Bosses with threaded brass inserts accept 3/8-16 screws
- Integral mounting feet
- Rounded edges, minimal protrusions or exposed pocket areas for accumulation of dust or debris
- Rain shield protection against incidental water ingress
- Dust-tight, watertight, non-corrosive environmental design
- Door has stainless steel hinge and twist-lock latches for easy entry
- Built-in padlock hasp
- Non-conductive, UV-resistant
- 216 lb-in impact resistance per UL746C
- Smooth surface, no color variations, swirls or color pockets, no voids
- Color: Gray

Listings

- UL/cUL [File E64358]
- NEMA Types 1 and 3R [Files 508A, 50, and 50e]
- CSA Standard C22.2 Types 1 and 3R [File LR069014]
- Temperature Range (-76°F to +274°F) (-60°C to +134°C)
- Flammability Rating UL94-5V
- NFPA No. 101 Flame Spread Class A (1)
- Impact Rating IK10

Certifications

- UL, IEC, CSA, REACH
- Outdoor UV Exposure Rated [UL 746C (F1)]



Shipping Schedule

| | | | | |
|----------|------------|------------|-------------|-------------|
| Same day | 1 - 5 days | 1 - 7 days | 1 - 15 days | 1 - 20 days |
|----------|------------|------------|-------------|-------------|

Color indicates shipping lead time in business days.

N Series Fiberglass Enclosures – NEMA 1 and 3R Single-Door with Twist-Lock Latches

| Part Number | Price | Enclosure Overall Size HxWxD | Wt. | No. Latches | Carbon Steel Subpanel | Aluminum Subpanel | Drawing Link |
|------------------|------------|---|---------------|-------------|-----------------------|-------------------|--------------|
| <u>N242410RT</u> | \$995.00 | 27.00 x 25.24 x 11.90 [686 x 641 x 302] | 42.00 [19.05] | 2 | <u>BP2424CS</u> | <u>BP2424AL</u> | PDF |
| <u>N302410RT</u> | \$1,066.00 | 33.41 x 26.32 x 11.95 [849 x 669 x 304] | 50.00 [22.68] | 2 | <u>BP3024CS</u> | <u>BP3024AL</u> | PDF |
| <u>N363010RT</u> | \$1,456.00 | 39.31 x 32.50 x 12.05 [998 x 826 x 306] | 78.00 [35.37] | 3 | <u>BP3630CS</u> | <u>BP3630AL</u> | PDF |
| <u>N363012RT</u> | \$1,534.00 | 39.31 x 32.50 x 14.05 [998 x 826 x 357] | 81.00 [36.73] | 3 | <u>BP3630CS</u> | <u>BP3630AL</u> | PDF |

Notes: Subpanels must be ordered separately.
 Dimensions in inches [millimeters].
 Weight in pounds [kilograms].

N Series Fiberglass Enclosures

NEMA 1, 3, 3R, 4X and 12 - Single-Door with Twist-Lock Latches



N483612HWT

Construction

- Hot compression molded fiberglass reinforced polyester, hand layup FRP
- Poured polyurethane seamless gasket provides watertight, dust-tight environmental seal
- 304 stainless steel used on all external hardware
- Panel mounting capability for fixed rear panel
- Bosses with threaded brass inserts accept 3/8-16 screws
- Integral mounting feet
- Rounded edges, minimal protrusions or exposed pocket areas for accumulation of dust or debris
- Dust-tight, watertight, non-corrosive environmental design
- Stainless steel, hinged door with twist-lock latches for easy entry
- Built-in padlock hasp on enclosure sizes 20x16 and larger
- Non-conductive, UV-resistant
- 216 lb-in impact resistance per UL746C
- Smooth surface, no color variations, swirls or color pockets, no voids
- Color: Gray

Listings

- UL/cUL [File E64358]
- NEMA Types 1, 3, 3R, 4X, and 12 [Files 508A, 50, and 50e]
- CSA Standard C22.2 Types 1 and 3R [File LR069014]
- IEC 60529 Ratings IP66
- UL 1741 [File E333478]
- Temperature Range (-76°F to +274°F) (-60°C to +134°C)
- Flammability Rating UL94-5V
- NFPA No. 101 Flame Spread Class A (1)
- Impact Rating IK10

Certifications

- UL, IEC, CSA, REACH
- Outdoor UV Exposure Rated [UL 746C (F1)]



| Shipping Schedule | | | | |
|--|------------|------------|-------------|-------------|
| Same day | 1 - 5 days | 1 - 7 days | 1 - 15 days | 1 - 20 days |
| Color indicates shipping lead time in business days. | | | | |

N Series Fiberglass Enclosures – NEMA 1, 3, 3R, 4X, and 12 – Single-Door with Twist-Lock Latches

| Part Number | Price | Enclosure Overall Size HxWxD | Wt. | No. Latches | Carbon Steel Subpanel | Aluminum Subpanel | Drawing Link |
|----------------------------|------------|--|----------------|-------------|--------------------------|--------------------------|---------------------|
| N16107HWT | \$679.00 | 18.75 x 10.96 x 9.03 [476 x 278 x 229] | 12.00 [5.44] | 2 | — | BP1610AL | PDF |
| N201612HWT | \$831.00 | 22.75 x 16.87 x 13.77 [578 x 428 x 350] | 24.00 [10.88] | 2 | BP2016CS | BP2016AL | PDF |
| N241210HWT | \$894.00 | 26.95 x 13.72 x 11.99 [685 x 348 x 305] | 25.00 [11.34] | 2 | — | BP2412AL | PDF |
| N24208HWT | \$1,016.00 | 27.00 x 21.24 x 9.90 [686 x 539 x 251] | 32.00 [14.51] | 4 | BP2420CS | BP2420AL | PDF |
| N242410HWT | \$1,176.00 | 27.00 x 25.24 x 11.90 [686 x 641 x 302] | 42.00 [19.05] | 4 | BP2424CS | BP2424AL | PDF |
| N242412HWT | \$1,339.00 | 27.00 x 25.24 x 13.90 [686 x 641 x 353] | 43.00 [19.50] | 4 | BP2424CS | BP2424AL | PDF |
| N30208HWT | \$1,084.00 | 32.86 x 20.99 x 9.89 [835 x 533 x 251] | 36.00 [16.33] | 5 | — | BP3020AL | PDF |
| N302010HWT | \$1,314.00 | 32.86 x 20.99 x 11.89 [835 x 533 x 302] | 39.00 [17.69] | 5 | — | BP3020AL | PDF |
| N30247HWT | \$1,216.00 | 33.41 x 26.32 x 8.81 [849 x 669 x 224] | 45.00 [20.41] | 5 | BP3024CS | BP3024AL | PDF |
| N302410HWT | \$1,231.00 | 33.41 x 26.32 x 11.95 [849 x 669 x 304] | 50.00 [22.68] | 5 | BP3024CS | BP3024AL | PDF |
| N302412HWT | \$1,295.00 | 33.41 x 26.32 x 13.79 [849 x 669 x 350] | 54.00 [24.49] | 5 | BP3024CS | BP3024AL | PDF |
| N36308HWT | \$1,577.00 | 39.31 x 32.50 x 10.05 [998 x 826 x 255] | 75.00 [34.01] | 5 | BP3630CS | BP3630AL | PDF |
| N363010HWT | \$1,593.00 | 39.31 x 32.50 x 12.05 [998 x 826 x 306] | 78.00 [35.37] | 5 | BP3630CS | BP3630AL | PDF |
| N363012HWT | \$1,708.00 | 39.31 x 32.50 x 14.05 [998 x 826 x 357] | 81.00 [36.73] | 5 | BP3630CS | BP3630AL | PDF |
| N483612HWT | \$2,848.00 | 51.29 x 36.62 x 13.93 [1303 x 930 x 354] | 146.00 [66.21] | 10 | BP4836CS | BP4836AL | PDF |
| N483616HWT | \$3,149.00 | 51.29 x 36.62 x 17.93 [1303 x 930 x 455] | 164.00 [74.38] | 10 | BP4836CS | BP4836AL | PDF |
| N603612HWT | \$3,690.00 | 63.50 x 36.50 x 14.12 [1613 x 927 x 359] | 177.00 [80.27] | 11 | — | BP6036AL | PDF |
| N603616HWT | \$4,040.00 | 63.50 x 36.50 x 18.12 [1613 x 927 x 460] | 198.00 [89.80] | 11 | — | BP6036AL | PDF |

Notes: Subpanels must be ordered separately.
 Dimensions in inches [millimeters].
 Weight in pounds [kilograms].

N Series Fiberglass Enclosures

NEMA 1, 3, 3R, 4X and 12 - Single-Door
with Acrylic Window and Twist-Lock Latches



NW483612HWT

Construction

- Hot compression molded fiberglass reinforced polyester, hand layup FRP
- Poured polyurethane seamless gasket provides watertight, dust-tight environmental seal
- 304 stainless steel used on all external hardware
- Panel mounting capability for fixed rear panel
- Bosses with threaded brass inserts for 3/8-16 screws
- Integral mounting feet
- Rounded edges, minimal protrusions or exposed pocket areas for accumulation of dust or debris
- Dust-tight, watertight, non-corrosive environmental design
- Stainless steel, hinged door with twist-lock latches for easy entry
- Non-conductive, UV-resistant
- 216 lb-in impact resistance per UL746C
- Smooth surface, no color variations, swirls or color pockets, no voids
- Scratch- and abrasion-resistant, UVA acrylic flush-bonded window
- Color: Gray

Listings

- UL/cUL [File E64358]
- NEMA Types 1, 3, 3R, 4X, and 12 [Files 508A, 50, and 50e]
- CSA Standard C22.2 Types 1 and 3R [File LR069014]
- UL 1741 [File E333478]
- Temperature Range (-76°F to +274°F) (-60°C to +134°C)
- Flammability Rating UL94-5V
- Window Temperature Range (-26°F to +170°F) (-32°C to +76°C)
- Window Flammability Rating UL94-HB
- Flammability Rating UL94-5V
- NFPA No. 101 Flame Spread Class A (1)
- Impact Rating IK10

Certifications

- UL, CSA, CE, REACH
- Outdoor UV Exposure Rated [UL 746C (F1)]



Shipping Schedule

Same day 1 - 5 days 1 - 7 days 1 - 15 days 1 - 20 days

Color indicates shipping lead time in business days.

N Series Fiberglass Enclosures – NEMA 1, 3, 3R, 4X and 12 - Single-Door with Acrylic Window and Twist-Lock Latches

| Part Number | Price | Enclosure Overall Size HxWxD | Wt. | No. Latches | Carbon Steel Subpanel | Aluminum Subpanel | Drawing Link |
|-----------------------------|------------|--|----------------|-------------|--------------------------|--------------------------|---------------------|
| NW201610HWT | \$1,506.00 | 22.75 x 16.87 x 11.77 [578 x 428 x 299] | 24.00 [10.88] | 2 | BP2016CS | BP2016AL | PDF |
| NW24208HWT | \$1,821.00 | 27.00 x 21.24 x 9.90 [686 x 539 x 251] | 34.00 [15.42] | 4 | BP2420CS | BP2420AL | PDF |
| NW242410HWT | \$2,094.00 | 27.00 x 25.24 x 11.90 [686 x 641 x 302] | 45.00 [20.41] | 4 | BP2424CS | BP2424AL | PDF |
| NW302410HWT | \$2,248.00 | 33.41 x 26.32 x 11.95 [849 x 669 x 304] | 54.00 [24.49] | 5 | BP3024CS | BP3024AL | PDF |
| NW363012HWT | \$3,194.00 | 39.31 x 32.50 x 14.05 [998 x 826 x 357] | 86.00 [39.00] | 5 | BP3630CS | BP3630AL | PDF |
| NW483612HWT | \$5,513.00 | 51.29 x 36.62 x 13.93 [1303 x 930 x 354] | 154.00 [69.84] | 10 | BP4836CS | BP4836AL | PDF |

Notes: Subpanels must be ordered separately.
Dimensions in inches [millimeters].
Weight in pounds [kilograms].

DuraBoxx Series Fiberglass Enclosures

Flush Fitting Cover



Applications

Extremely rugged fiberglass enclosure with low profile design and shallow depth. Accommodates direct-to-wall-mounting. The flush cover is well suited to wireless communication and operator interfaces.

Construction

- Hot compression molded fiberglass reinforced polyester (thermoset)
- Poured polyurethane seamless gasket provides watertight, rain-tight, environmental seal
- Submersible, non-corrosive environmental design
- Rounded edges, minimal protrusions or exposed pocket prevents accumulation of dust or debris
- 304 stainless steel used on all external hardware
- Flat lift-off cover with four captive screws (M6 x 35mm)
- All bosses utilize threaded brass inserts accepting M6 screws
- Optional mounting feet available
- 17-22 lb-in cover screw torque
- Color: Gray

Listings

- UL/cUL 50/50E/ 508A, 1, 3, 3S, 4X, 6, 6P, and 12 [File E64358]
- CSA Certified Types 1, 3, 3S, 4X, 6, 6P, and 12 [File LR069014]
- IEC 60529 Rating IP67, IP68 [File E362920]
- NEMA Types 1, 3, 3S, 4X, 6, 6P, and 12
- IEC 60529 IP66 [File E362920]
- Flammability Rating: UL94-V0
 - Self-extinguishing
 - Non-halogenating
 - Non-flame propagating
 - Temperature Range -26°F to 257°F [-32°C to 125°C]

Certifications

- CSA, UL



Shipping Schedule

Same day 1 - 5 days 1 - 7 days 1 - 15 days 1 - 20 days

Color indicates shipping lead time in business days.

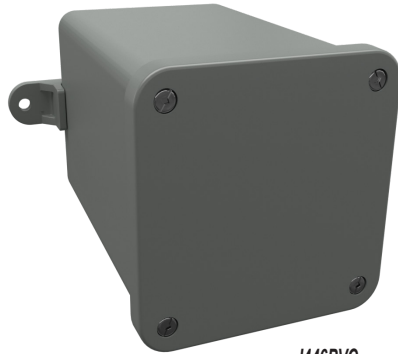
DuraBoxx Series Fiberglass Enclosures

| Part Number | Price | Enclosure Overall Size HxWxD | Drawing Link |
|-------------------------|----------|--|---------------------|
| D554W | \$82.00 | 4.80 x 4.72 x 3.58 [122 x 120 x 91] | PDF |
| D774W | \$116.00 | 6.30 x 6.30 x 3.58 [160 x 160 x 91] | PDF |
| D7114W | \$154.00 | 6.30 x 10.24 x 3.58 [160 x 260 x 91] | PDF |
| D10105W | \$194.00 | 10.04 x 9.84 x 4.76 [255 x 250 x 121] | PDF |
| D10165W | \$302.00 | 15.75 x 9.84 x 4.76 [400 x 250 x 121] | PDF |
| D16165W | \$409.00 | 15.94 x 15.75 x 4.76 [405 x 400 x 121] | PDF |

Notes: Dimensions in inches [millimeters].

NewSentry Series PVC Enclosures

Screwdown Lift-off Cover NEMA 1, 2, 3, 4, 4X, and 12



J446PVC

Applications

Extremely rugged and light PVC enclosure for harsh, aggressive environments. Uses vary from high-end electronics to extreme corrosive applications both indoors and out.

Construction

- Polyvinyl chloride (PVC)
- Easily workable material
- PVC seamless gasket
- Integral mounting feet on smaller sizes for ease of mounting
- Rounded edges, minimal protrusions or exposed pocket areas for accumulation of dust and debris
- Brass captive cover screws and threaded inserts with sizes varying from #8-32 to 1/4-20
- 20-24 lb-in cover screw torque
- Color: Gray

Listings

- UL508A, UL50 and UL50e) 1, 2, 3, 4, 4X, 12, and 13 [UL File E190960]
- CSA Certified Types 1, 2, 3, 4, 4X, 12, and 13 [CSA File 207025]
- NEMA Types 1, 2, 3, 4, 4X, 12, and 13
- Flammability Rating: UL94-V0
 - Self-extinguishing
 - Non-halogenating
 - Non-flame propagating
- Temperature Range -4°F to 140°F [-20°C to 60°C]

Certifications

- CSA, UL



Shipping Schedule

Same day 1 - 5 days 1 - 7 days 1 - 15 days 1 - 20 days

Color indicates shipping lead time in business days.

NewSentry Series PVC Enclosures

| Part Number | Price | Enclosure Overall Size HxWxD | Drawing Link |
|---------------------------|----------|--|---------------------|
| J446PVC | \$48.50 | 4.02 x 4.02 x 6.58 [102 x 102 x 167] | PDF |
| J442PVC | \$26.00 | 4.03 x 4.03 x 2.42 [102 x 102 x 61] | PDF |
| J444PVC | \$43.00 | 4.04 x 4.04 x 4.50 [103 x 103 x 114] | PDF |
| J552PVC | \$50.50 | 5.00 x 5.00 x 2.33 [127 x 127 x 59] | PDF |
| J664PVC | \$52.50 | 6.85 x 6.85 x 4.57 [174 x 174 x 116] | PDF |
| J666PVC | \$61.00 | 6.85 x 6.85 x 6.58 [174 x 174 x 167] | PDF |
| J884PVC | \$99.00 | 8.96 x 8.96 x 4.62 [228 x 228 x 117] | PDF |
| J887PVC | \$137.00 | 9.15 x 9.15 x 7.65 [232 x 232 x 194] | PDF |
| J12124PVC | \$150.00 | 12.94 x 12.94 x 4.70 [329 x 329 x 119] | PDF |
| J12126PVC | \$153.00 | 12.94 x 12.94 x 6.64 [329 x 329 x 169] | PDF |

Note: Dimensions in inches [millimeters].

CF Series Fiberglass In-Line Pushbutton Enclosures 30mm and 22mm with Lift-off Cover

STÄHLIN
A ROBROY ENCLOSURES® BRAND



Construction

- Hot compression molded fiberglass reinforced thermoset polyester
- Poured polyurethane seamless gasket provides watertight, dust-tight environmental seal
- Recessed captive stainless steel screws
- 300 Series stainless steel used on all external hardware
- Workable material cuts, drills, punches and saws with ease and accuracy
- Optional mounting feet
- Rounded edges, minimal protrusions or exposed pocket prevents accumulation of dust or debris
- Metal grounding strap
- Submersible, non-corrosive environmental design
- Lift-off cover with four cover screws
- Non-conductive, impact-resistant, UV-resistant
- Non-flame propagating
- Subpanel not required
- Smooth surface, no color variations, swirls or color pockets, no voids
- Color: Gray

Listings

- UL/cUL [File E64358]
- NEMA Types 1, 3R, 4X, 6P, and 12 [Files 508A, 50, and 50e]
- CSA Standard C22.2 Types 1, 3R, 4X, 6P, and 12 [File LR069014]
- IEC 60529 Ratings IP66, IP67, IP68 [File E362920]
- UL 1741 [File E333478]
- Temperature Range -76°F to +274°F [-60°C to +134°C]
- Flammability Rating UL94-5V
 - Self-extinguishing
 - Non-halogenated
 - Non-flame propagating
- NFPA No. 101 Flame Spread Class A (1)

Certifications

- cULus, CSA, IEC, REACH
- Outdoor UV Exposure Rated [UL 746C (F1)]
- Plenum Space Rating [File 2043]



Shipping Schedule

Same day 1 - 5 days 1 - 7 days 1 - 15 days 1 - 20 days

Color indicates shipping lead time in business days.

CF Series 30mm Fiberglass In-Line Pushbutton

| Part Number | Price | # Holes | Enclosure Overall Size HxWxD | Drawing Link |
|-----------------------|----------|---------|-------------------------------------|---------------------|
| CF6PB | \$66.00 | 1 | 6.63 x 3.81 x 3.89 [168 x 97 x 99] | PDF |
| CF2PB | \$68.00 | 2 | 6.63 x 3.81 x 3.89 [168 x 97 x 99] | PDF |
| CF3PB | \$74.00 | 3 | 8.88 x 3.81 x 3.89 [226 x 97 x 99] | PDF |
| CF4PB | \$75.00 | 4 | 11.13 x 3.81 x 3.89 [283 x 97 x 99] | PDF |
| CF5PB | \$87.00 | 5 | 13.78 x 3.63 x 3.14 [350 x 92 x 80] | PDF |
| CF6PB | \$101.00 | 6 | 17.35 x 3.63 x 3.14 [441 x 92 x 80] | PDF |

Notes: Subpanels not required.
Dimensions in inches [millimeters].

CF Series 22mm Fiberglass In-Line Pushbutton

| Part Number | Price | # Holes | Enclosure Overall Size HxWxD | Drawing Link |
|-------------------------|----------|---------|-------------------------------------|---------------------|
| CF1PB22 | \$66.00 | 1 | 6.63 x 3.81 x 3.89 [168 x 97 x 99] | PDF |
| CF2PB22 | \$68.00 | 2 | 6.63 x 3.81 x 3.89 [168 x 97 x 99] | PDF |
| CF3PB22 | \$74.00 | 3 | 6.63 x 3.81 x 3.89 [168 x 97 x 99] | PDF |
| CF4PB22 | \$75.00 | 4 | 8.88 x 3.81 x 3.89 [226 x 97 x 99] | PDF |
| CF5PB22 | \$87.00 | 5 | 11.13 x 3.81 x 3.89 [283 x 97 x 99] | PDF |
| CF6PB22 | \$101.00 | 6 | 11.13 x 3.81 x 3.89 [283 x 97 x 99] | PDF |

Notes: Subpanels not required.
Dimensions in inches [millimeters].



F Series Fiberglass Pushbutton Enclosures

30mm Multi-Hole



F6PBW

Construction

- Hot compression molded fiberglass reinforced thermoset polyester
- Poured polyurethane seamless gasket provides watertight, dust-tight environmental seal
- Recessed captive stainless steel screws
- 300 Series stainless steel used on all external hardware
- Integral mounting flange for easy mounting
- Optional mounting feet not available on this model
- Rounded edges, minimal protrusions or exposed pocket areas for accumulation of dust or debris
- Raised bosses with brass inserts accepting 10-32 screws for optional panel mounting
- Stainless steel beaded cover retention chain
- Metal grounding strap
- Submersible, non-corrosive environment
- Lift-off cover with four cover screws
- Non-conductive, impact-resistant, UV-resistant
- Non-flame propagating
- Smooth surface, no color variations, swirls or color pockets, no voids
- Color: Gray

Listings

- UL/cUL [File E64358]
- NEMA Types 1, 3R, 4X, 6P, and 12 [Files 508A, 50, and 50e]
- CSA Standard C22.2 Types 1, 3R, 4X, 6P, and 12 [File LR069014]
- IEC 60529 Ratings IP66, IP67, IP68 [File E362920]
- UL 1741 [File E333478]
- Temperature Range -76°F to +274°F [-60°C to +134°C]
- Flammability Rating UL94-5V
 - Self-extinguishing
 - Non-halogenated
 - Non-flame propagating
- NFPA No. 101 Flame Spread Class A (1)

Certifications

- cULus, CSA, IEC, REACH
- Outdoor UV Exposure Rated [UL 746C (F1)]
- Plenum Space Rating [File 2043]



Shipping Schedule

Same day 1 - 5 days 1 - 7 days 1 - 15 days 1 - 20 days

Color indicates shipping lead time in business days.

F Series 30mm Fiberglass Multi-Hole Pushbutton

| Part Number | Price | # Holes | Enclosure Overall Size HxWxD (inches) | Wt. | Carbon Steel Subpanel | Fiberglass Subpanel | Aluminum Subpanel | Drawing Link |
|--------------|----------|---------|---------------------------------------|-------------|-----------------------|---------------------|-------------------|---------------------|
| F4PBW | \$132.00 | 4 | 7.50 x 7.50 x 4.75 [191 x 191 x 121] | 2.75 [1.25] | BP66CS | — | BP66AL | PDF |
| F6PBW | \$104.00 | 6 | 9.62 x 7.50 x 4.74 [244 x 191 x 120] | 2.00 [0.91] | BP86CS | BP86FG | BP86AL | PDF |
| F9PBW | \$94.00 | 9 | 11.62 x 9.41 x 4.25 [295 x 239 x 108] | 5.00 [2.27] | BP108CS | BP108FG | BP108AL | PDF |

Notes: Subpanels must be ordered separately.
Dimensions in inches [millimeters].
Weight in pounds [kilograms].

Enclosure Accessories – Mounting Feet, Panel Mounting and Latches

Mounting Feet for Diamond Shield, CF and Classic Series Enclosures



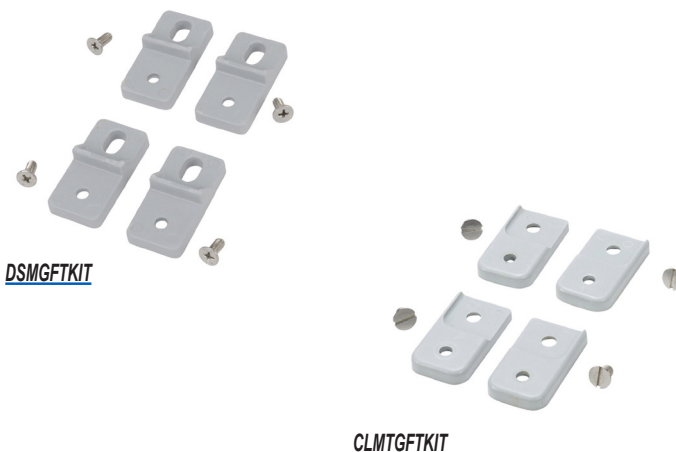
Shipping Schedule

Same day 1 - 5 days 1 - 7 days 1 - 15 days 1 - 20 days

Color indicates shipping lead time in business days.

Mounting Feet for Diamond Shield, CF and Classic Series Enclosures

| Part Number | Price | Description | Wt. [oz] |
|--------------------------|---------|--|----------|
| <u>DSMGFTKIT</u> | \$23.00 | Fiberglass-reinforced plastic (FRP). Includes (4) mounting feet and mounting hardware. | 1 |
| <u>CLMTGFTKIT</u> | \$48.00 | Fiberglass-reinforced plastic (FRP). For use with Classic series enclosures. Includes (4) mounting feet and mounting hardware. | 1 |



Latches for Classic, Diamond Shield, and N Series Enclosures



Latches for Classic, Diamond Shield, and N Series Enclosures

| Part Number | Price | Description |
|---------------------------|---------|---|
| <u>SSLKIT</u> | \$40.00 | quick-release latch, replacement, 304 stainless steel For use with Centurion series enclosures Mounting hardware included |
| <u>DSHLLKIT</u> | \$42.50 | Replacement, quick-release, 304 stainless steel. Package of 2. |
| <u>NLL150KIT</u> | \$68.00 | 304 stainless steel. For use with NEMA 3R and NEMA 4X N series enclosures. Mounting hardware included. |
| <u>NLL150WTKIT</u> | \$68.00 | 304 stainless steel. For use with NEMA 4X N series enclosures. Mounting hardware included. |
| <u>DSHPLKIT</u> | \$31.00 | lockable latch, replacement, quick-release, 304 stainless steel Package of 2 |

Enclosure Accessories – Hole Seals and Plugs



Hole Plugs for Non-Metal Enclosures

Designed to seal extra pushbutton holes, conduit openings, and knockout openings in fiberglass enclosures from dirt, dust, oil, and water. Conduit hole sizes are nominal trade sizes, not actual hole sizes. (Example: 1 in [25 mm] conduit actual diameter = 1.315 in [33.4 mm]).

Agency Approvals

- Fiberglass hole plug for UL Types 1, 3R, 4, 4X, 6, 6P, and 12 Industrial control panel enclosures. [File E64358]
- CSA Types 1, 12, 3, 3R, 4, 4X, 6, and 6P: IEC Codes IP66, IP68 [File LR069014]



Shipping Schedule

Same day 1 - 5 days 1 - 7 days 1 - 15 days 1 - 20 days

Color indicates shipping lead time in business days.

Hole Plugs for Non-Metal Enclosures

| Part Number | Price | Description | Nominal Hole Diameter Range | Wt [oz] |
|-----------------------------|---------|---|-----------------------------|---------|
| <u>REHPSERIES1</u> | \$7.50 | Fiberglass-reinforced polyester (FRP), closed-cell neoprene gasket, for 1/2, 5/8 and 3/4-inch hole. | 0.50-0.81 [12.7-20.6] | 2 |
| <u>REHPSERIES1.5</u> | \$10.25 | Fiberglass-reinforced polyester (FRP), closed-cell neoprene gasket. For use with 1/2in conduit holes. | 0.88 [22.4] | 2 |
| <u>REHPSERIES2</u> | \$8.50 | Fiberglass-reinforced polyester (FRP), closed-cell neoprene gasket, for 1/2- to 3/4-inch conduit holes and 22 or 30mm [1.18 in] pushbutton holes. | 0.88-1.28 [22.4-32.5] | 2 |
| <u>REHPSERIES3</u> | \$13.75 | Fiberglass-reinforced polyester (FRP), closed-cell neoprene gasket, for 1 to 1-1/4 inch conduit holes. | 1.38-1.75 [35.1-44.5] | 2 |
| <u>REHPSERIES4</u> | \$17.50 | Fiberglass-reinforced polyester (FRP), closed-cell neoprene gasket, for 1-1/2 to 2-inch conduit holes. | 2.00-2.56 [50.1-65.0] | 2 |

Note: Dimensions in inches [millimeters].



REHPSERIES1



REHPSERIES3

Vents for Fiberglass Enclosures



| Shipping Schedule | | | | |
|--|------------|------------|-------------|-------------|
| Same day | 1 - 5 days | 1 - 7 days | 1 - 15 days | 1 - 20 days |
| Color indicates shipping lead time in business days. | | | | |



REV60



REV80



REAVP12

| Heartland Series – Enclosure Vents | | |
|------------------------------------|---------|--|
| Part Number | Price | Description |
| <u>REV60</u> | \$16.25 | vent, 60mm, polycarbonate, maintains NEMA 3R rating. |
| <u>REV80</u> | \$21.50 | vent, 80mm, polycarbonate , not UL rated, Enclosure is NEMA 1 when vent is installed |
| <u>REAVP12</u> | \$47.00 | vent gland, 12mm, polycarbonate , not UL rated, Enclosure is NEMA 1 when vent is installed |

Enclosure Accessories – Miscellaneous



| Shipping Schedule | | | | |
|--|------------|------------|-------------|-------------|
| Same day | 1 - 5 days | 1 - 7 days | 1 - 15 days | 1 - 20 days |
| Color indicates shipping lead time in business days. | | | | |

Carrying Handle



| Part Number | Price | Description | Wt.[oz] |
|----------------------------|---------|--|---------|
| RECH109506 | \$31.00 | AttaBox carrying handle, plastic, black. For use with fiberglass enclosures. | 2 |

Vapor Capsule



| Part Number | Price | Description | Wt.[oz] |
|------------------------|---------|---|---------|
| REVC21 | \$25.50 | Non-toxic vapor emitted from the capsule passivates the metal surfaces on the interior of the enclosure against atmospheric corrosion for up to one year by reducing the electro-chemical activity of the metal surfaces. Installs easily with a self-adhesive strip. | 1 |

Vents and Louvers for Non-Metallic Enclosures



| Shipping Schedule | | | | |
|--|------------|------------|-------------|-------------|
| Same day | 1 - 5 days | 1 - 7 days | 1 - 15 days | 1 - 20 days |
| Color indicates shipping lead time in business days. | | | | |

Drain Vents

Protects electrical equipment inside by properly draining unwanted moisture or accumulated water.



REDVK3KIT



| Part Number | Price | Description | Wt.[oz] |
|---------------------------|---------|--|---------|
| REDV1PVC | \$15.25 | AttaBox single drain vent, PVC. For use on non-metallic enclosures. Includes drain vent and silicone adhesive/sealant. | 2 |
| REDVK3KIT | \$23.00 | AttaBox single drain vent kit, PVC. Includes drain vent and silicone adhesive/sealant. | 2 |

| NEMA 4X Drain Vent | | | |
|---------------------------|---------|---|---------|
| Part Number | Price | Description | Wt.[oz] |
| REDV4XKIT | \$32.50 | AttaBox single drain vent kit properly drains unwanted moisture while maintaining ULType 4X enclosure rating. | 3.2 |



REDV4XKIT

Agency Approvals

- UL Type 4X [File E64358]

Breather Vent

Allows an enclosure to “breathe” – facilitating the free passage of air, equalizing the pressure differential between enclosure and environment.

Agency Approvals

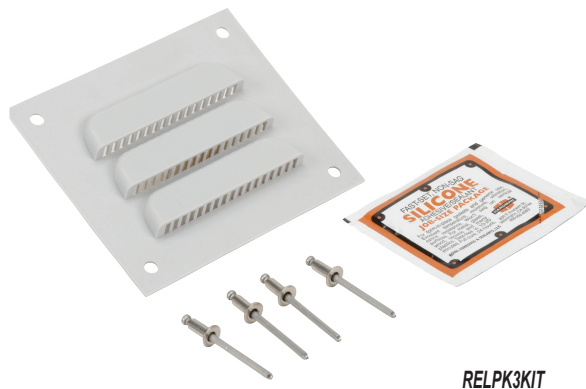
- UL Type 4X [File E64358]

| NEMA 4X Breather Vent | | | |
|---------------------------|---------|---|---------|
| Part Number | Price | Description | Wt.[oz] |
| REBV4XKIT | \$78.00 | AttaBox single breather vent kit allows enclosure to “breathe” while maintaining UL Type 4X enclosure rating. | 4.8 |



REBV4XKIT

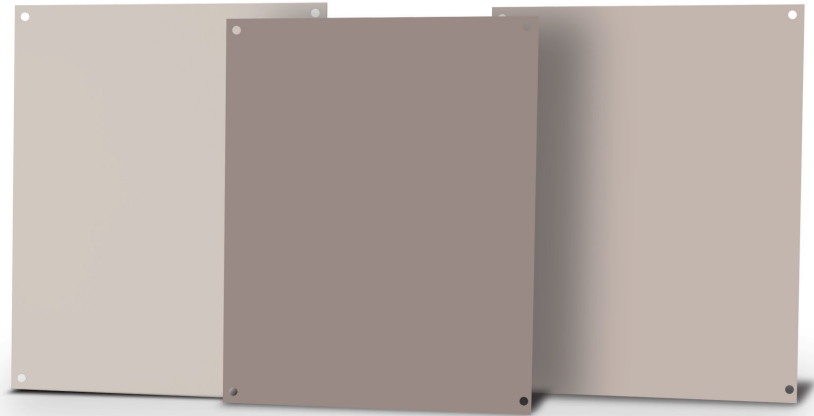
Louver Vents



RELPK3KIT

| Part Number | Price | Description | Wt.[oz] |
|---------------------------|---------|---|---------|
| REL1 | \$22.50 | Louver vent, for ventilation in non-metallic enclosure, polypropylene, 4.5 inch wide x 4.0 inch high. For 3 inch x 3 inch cutout. | 2 |
| RELPK3KIT | \$56.00 | Louver vent kit, for ventilation in non-metallic enclosure. Includes 4.5 inch wide x 4.0 inch high polypropylene louver vent, rivets and silicone adhesive/sealant. For 3 inch x 3 inch cutout. | 2 |

Subpanels for Diamond Shield, J, JW, RJ, RJW, and Classic Series Fiberglass Enclosures



Shipping Schedule

| | | | | |
|----------|------------|------------|-------------|-------------|
| Same day | 1 - 5 days | 1 - 7 days | 1 - 15 days | 1 - 20 days |
|----------|------------|------------|-------------|-------------|

Color indicates shipping lead time in business days.

Carbon steel subpanels

- Material: Carbon steel
- Finish: White polyester powder finish

| Part Number | Price | Subpanel Size HxW | Enclosure Nominal Size HxW |
|---------------------------|----------|---------------------------|----------------------------|
| BP64CS | \$17.25 | 4.88 x 2.88 [124 x 73] | 4.88 x 2.88in |
| BP66CS | \$11.25 | 4.88 x 4.88 [124 x 124] | 4.88 x 4.88in |
| BP86CS | \$13.50 | 6.75 x 4.88 [171 x 124] | 6.75 x 4.88in |
| BP88CS | \$21.00 | 6.88 x 6.88 [175 x 175] | 6.88 x 6.88in |
| BP108CS | \$20.50 | 8.75 x 6.88 [222 x 175] | 8.75 x 6.88in |
| BP1210CS | \$25.00 | 10.88 x 8.75 [276 x 222] | 10.88 x 8.75in |
| BP1412CS | \$30.00 | 12.88 x 10.88 [327 x 276] | 12.88 x 10.88in |
| BP1614CS | \$39.00 | 14.88 x 12.88 [378 x 327] | 14.88 x 12.88in |
| BP1816CS | \$50.50 | 16.88 x 14.88 [429 x 378] | 16.88 x 14.88in |
| BPJ2016CS | \$64.00 | 18.88 x 14.88 [480 x 378] | 18.88 x 14.88in |
| BPJ2020CS | \$187.00 | 18.88 x 18.88 [480 x 480] | 18.88 x 18.88in |
| BPJ2420CS | \$226.00 | 22.88 x 18.88 [581 x 480] | 22.88 x 18.88in |
| BPJ2424CS | \$277.00 | 22.88 x 22.88 [581 x 581] | 22.88 x 22.88in |

Note: Dimensions in inches [millimeters].

Fiberglass subpanels

- Material: Fiberglass reinforced polyester (FRP)
- Color: Gray

| Part Number | Price | Subpanel Size HxW | Enclosure Nominal Size HxW |
|--------------------------|---------|---------------------------|----------------------------|
| BP86FG | \$20.25 | 6.88 x 4.88 [175 x 124] | 6.88 x 4.88in |
| BP108FG | \$27.00 | 8.88 x 6.88 [226 x 175] | 8.88 x 6.88in |
| BP1210FG | \$34.50 | 10.88 x 8.88 [276 x 226] | 10.88 x 8.88in |
| BP1412FG | \$43.50 | 12.88 x 10.88 [327 x 276] | 12.88 x 10.88in |
| BP1614FG | \$54.00 | 14.88 x 12.88 [378 x 327] | 14.88 x 12.88in |
| BP1816FG | \$59.00 | 16.88 x 14.88 [429 x 378] | 16.88 x 14.88in |

Note: Dimensions in inches [millimeters].

Subpanels for Diamond Shield, J, JW, RJ, RJW, and Classic Series Fiberglass Enclosures



Shipping Schedule

Same day 1 - 5 days 1 - 7 days 1 - 15 days 1 - 20 days

Color indicates shipping lead time in business days.

Aluminum subpanels

- Material: 3003H14 aluminum
- Finish: Mill

| Part Number | Price | Subpanel Size HxWxD | Enclosure Nominal Size HxW | Drawing Link |
|---------------------------|----------|---------------------------|----------------------------|---------------------|
| BP64AL | \$11.00 | 4.88 x 2.88 [124 x 73] | 6 x 4 [152 x 102] | PDF |
| BP66AL | \$11.25 | 4.88 x 4.88 [124 x 124] | 6 x 6 [152 x 152] | PDF |
| BP86AL | \$13.50 | 6.88 x 4.88 [175 x 124] | 8 x 6 [203 x 152] | PDF |
| BP108AL | \$20.50 | 8.88 x 6.88 [226 x 175] | 10 x 8 [254 x 203] | PDF |
| BP1210AL | \$25.00 | 10.88 x 8.88 [276 x 226] | 12 x 10 [305 x 254] | PDF |
| BP1412AL | \$30.00 | 12.88 x 10.88 [327 x 276] | 14 x 12 [356 x 305] | PDF |
| BP1614AL | \$39.00 | 14.88 x 12.88 [378 x 327] | 16 x 14 [406 x 356] | PDF |
| BP1816AL | \$50.50 | 16.88 x 14.88 [429 x 378] | 18 x 16 [457 x 406] | PDF |
| BPJ2016AL | \$64.00 | 18.88 x 14.88 [480 x 378] | 20 x 16 [508 x 406] | PDF |
| BPJ2020AL | \$179.00 | 18.88 x 18.88 [480 x 480] | 20 x 20 [508 x 508] | PDF |
| BPJ2420AL | \$216.00 | 22.88 x 18.88 [581 x 480] | 24 x 20 [610 x 508] | PDF |
| BPJ2424AL | \$265.00 | 22.88 x 22.88 [581 x 581] | 24 x 24 [610 x 610] | PDF |
| BPJ3024AL | \$313.00 | 27.00 x 21.00 [686 x 533] | 30 x 24 [762 x 610] | PDF |

Note: Dimensions in inches (millimeters).



Subpanels for N Series Fiberglass Enclosures



Shipping Schedule

Same day 1 - 5 days 1 - 7 days 1 - 15 days 1 - 20 days

Color indicates shipping lead time in business days.

Carbon steel subpanels

- Material: Carbon steel
- Finish: White polyester powder

| Subpanel Part Number | Price | Subpanel Size HxWxD | Enclosure Nominal Size HxW | Drawing Link |
|--------------------------|----------|----------------------------|----------------------------|---------------------|
| BP2016CS | \$84.00 | 17.00 x 13.00 [432 x 330] | 20 x 16 [508 x 406] | PDF |
| BP2420CS | \$164.00 | 21.00 x 17.00 [533 x 432] | 24 x 20 [610 x 508] | PDF |
| BP2424CS | \$277.00 | 21.00 x 21.00 [533 x 533] | 24 x 24 [610 x 610] | PDF |
| BP3024CS | \$258.00 | 27.00 x 21.00 [686 x 533] | 30 x 24 [762 x 610] | PDF |
| BP3630CS | \$403.00 | 33.00 x 27.00 [838 x 686] | 36 x 30 [914 x 762] | PDF |
| BP4836CS | \$584.00 | 45.00 x 33.00 [1143 x 838] | 48 x 36 [1219 x 914] | PDF |

Note: Dimensions in inches [millimeters].

Aluminum subpanels

- Material: 3003H14 aluminum
- Finish: Mill

| Subpanel Part Number | Price | Subpanel Size HxWxD | Enclosure Nominal Size HxW | Drawing Link |
|--------------------------|----------|----------------------------|----------------------------|---------------------|
| BP1610AL | \$75.00 | 13.00 x 8.50 [330 x 216] | 16 x 10 [406 x 254] | PDF |
| BP2016AL | \$84.00 | 17.00 x 13.00 [432 x 330] | 20 x 16 [508 x 406] | PDF |
| BP2412AL | \$81.00 | 21.00 x 9.00 [533 x 229] | 24 x 12 [610 x 305] | PDF |
| BP2420AL | \$164.00 | 21.00 x 17.00 [533 x 432] | 24 x 20 [610 x 508] | PDF |
| BP2424AL | \$202.00 | 21.00 x 21.00 [533 x 533] | 24 x 24 [610 x 610] | PDF |
| BP3020AL | \$210.00 | 27.00 x 17.00 [686 x 432] | 30 x 20 [762 x 508] | PDF |
| BP3024AL | \$258.00 | 27.00 x 21.00 [686 x 533] | 30 x 24 [762 x 610] | PDF |
| BP3630AL | \$403.00 | 33.00 x 27.00 [838 x 686] | 36 x 30 [914 x 762] | PDF |
| BP4836AL | \$584.00 | 45.00 x 33.00 [1143 x 838] | 48 x 36 [1219 x 914] | PDF |
| BP6036AL | \$723.00 | 57.00 x 33.00 [1448 x 838] | 60 x 36 [1524 x 914] | PDF |

Note: Dimensions in inches [millimeters].