

Automationdirect.com

Add-On Instruction Walkthrough: GS30A-CM-EIP1

EiploDataMapping_GS30A_CM_EIP1

Contents

Purpose	2
Purpose of this document:	2
Purpose of this Add-On Instruction:	2
Notes	3
Introduction	4
Register EDS File	5
Create New Module	10
Import Add-On Instruction	13
Use Add-On Instruction in Project	15
Reference	19
Studio 5000 Instruction Mnemonic Update Table	19

Purpose

Purpose of this document:

The purpose of this document is to help guide the user through the process of successfully integrating the EiploDataMapping_GS30A_CM_EIP1 Add-On Instruction into their Studio 5000 project.

Purpose of this Add-On Instruction:

The EiploDataMapping_GS30A_CM_EIP1 Add-On Instruction unpacks raw Input Data (T->O) from an array and maps this data into meaningful device related status tags for the user. Likewise, the Add-On Instruction also maps meaningful device related command tags and packs the data into the raw Output Data (O->T) array. The purpose of the Add-On Instruction is to simplify the mapping (packing/unpacking) of raw Input/Output Data. For the operation of the device, the user must provide their own logic.

Notes

Note: For the most current mapping and descriptions of the Input and Output Data for the GS30A-CM-EIP1, see Appendix B of the GS30 Series Drives User Manual.

Note: While images used in this document may differ slightly from what a user might see in their software as a result of updates to the Add-On Instruction, the process outlined in the document should be the same.

Note: The following items were used to create this document and are referenced in the walkthrough:

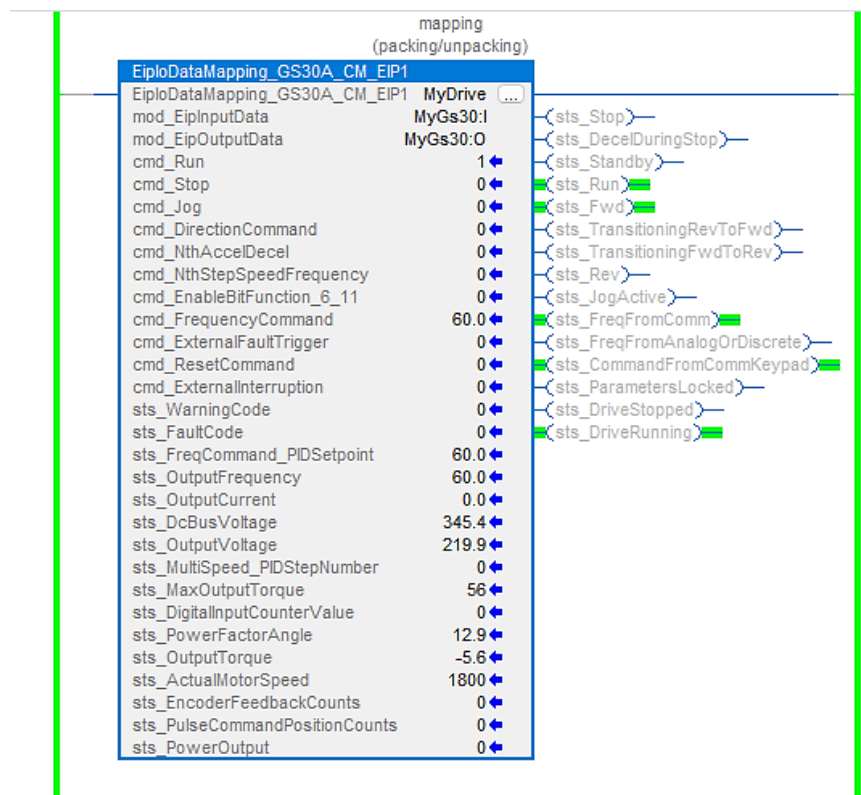
- *Part Number: GS30A-CM-EIP1*
- *EDS File: GS30A_CM_EIP1_Rev1_0.eds*
- *Add-On Instruction File: EiploDataMapping_GS30A_CM_EIP1_AOI.L5X*
- *Add-On Instruction Name: EiploDataMapping_GS30A_CM_EIP1*
- *Studio 5000 version: 37.00.00*
 - *IMPORTANT: In version 36 of Studio 5000, the mnemonics for some instructions were changed/updated by Rockwell. When using a version of Studio 5000 earlier than version 36 with this Add-On Instruction, the user may need to change these instructions from the NEW mnemonic to the OLD mnemonic. A table showing affected instructions can be found in the [Reference](#) section of this document.*

Introduction

The Add-On Instruction for the GS30A-CM-EIP1 removes the cumbersome task of having to map the IO Messaging data to/from generic array elements into/out of specific and meaningful tags. This helps you as a user to get integrated faster.

This walkthrough will cover:

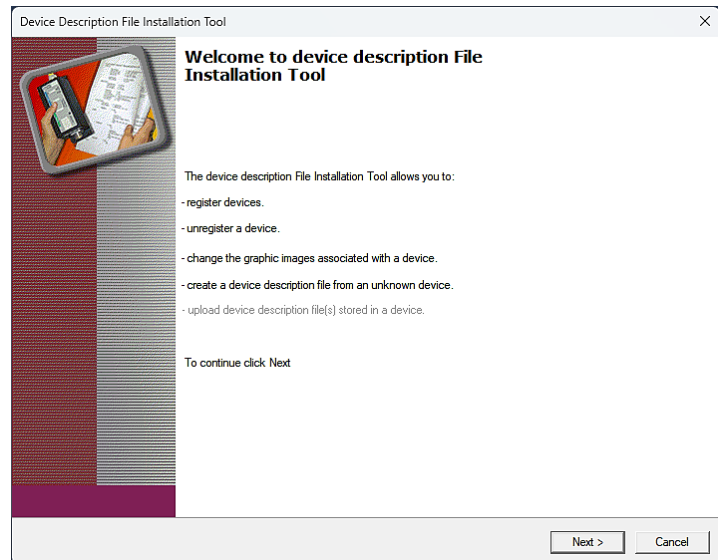
- Registering the EDS file for the GS30A-CM-EIP1
- Creating a new module (IO Messaging adapter) in Studio 5000
- Importing the Add-On Instruction
- Placing the Add-On Instruction into the Studio 5000 project



Register EDS File

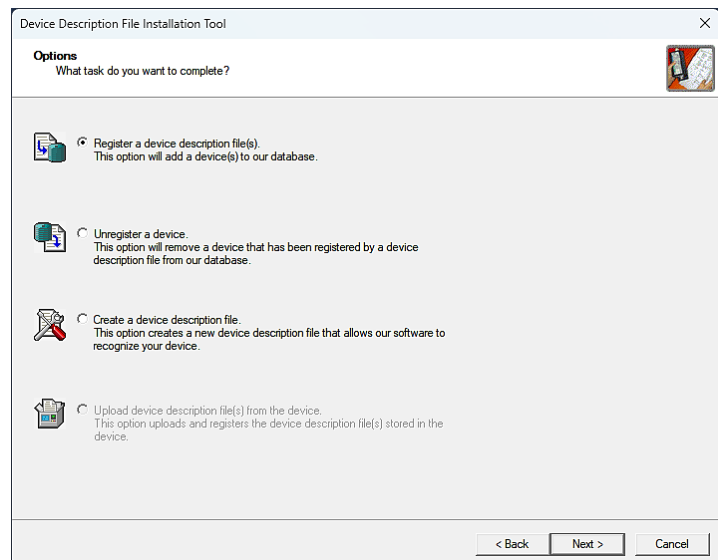
Step 1: Open Rockwell Automation's Device Description File Installation tool (EDS Wizard) from the tools Menu in Studio 5000 and register the EDS file for the GS30A-CM-EIP1

Click 'Next'.

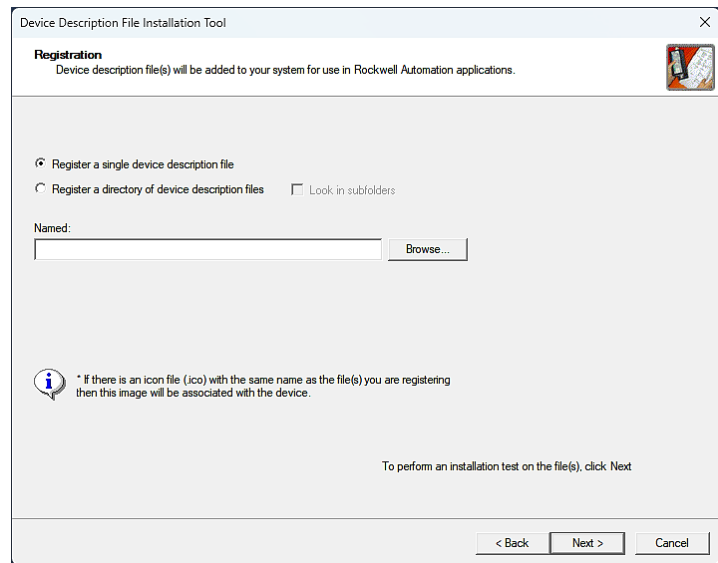


Step 2: Select 'Register an EDS file.'

Click 'Next'.

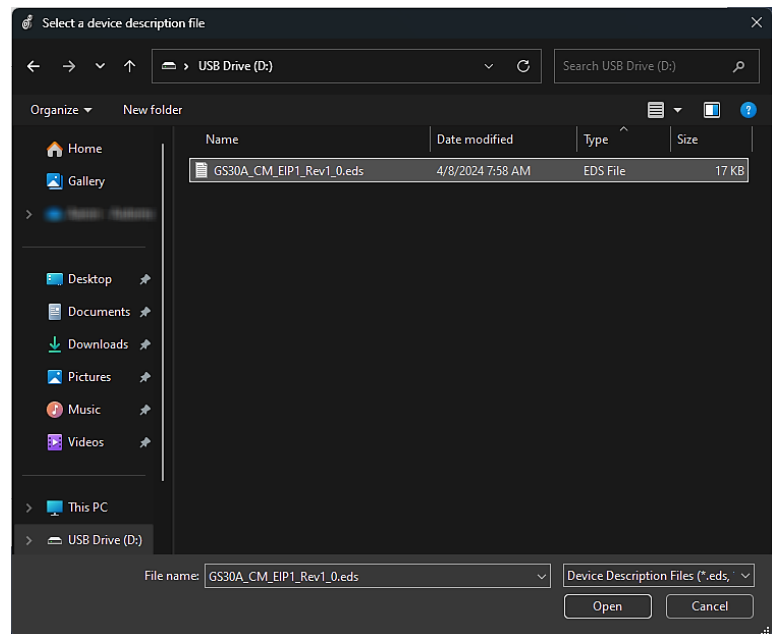


Step 3: Select 'Register a single file' and 'Browse' to select the directory where the EDS file resides.



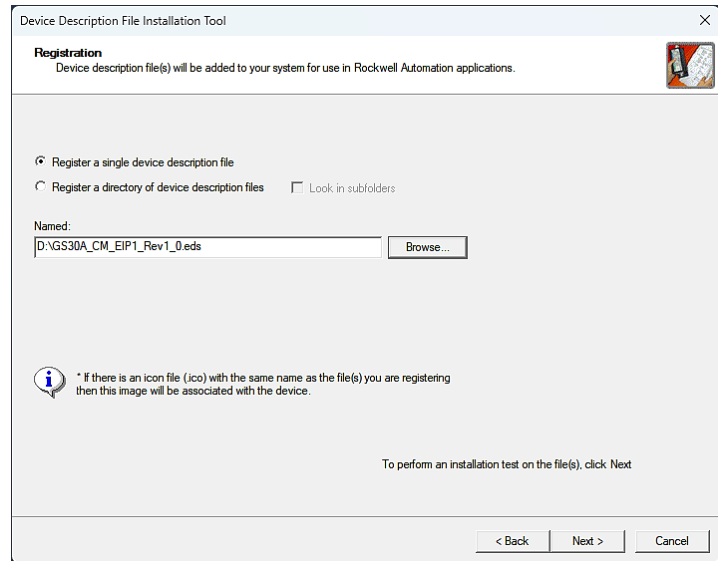
Step 4: Select the EDS file.

Click 'Open'



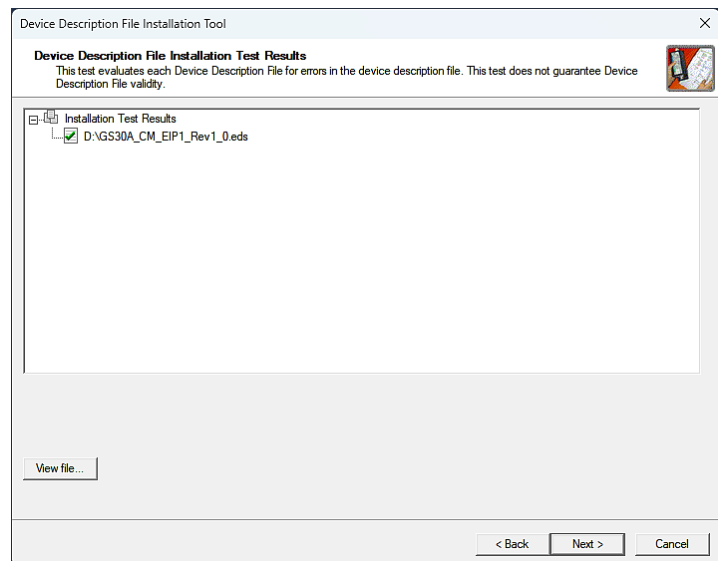
Step 5: The Named field should show the directory path to the EDS file.

Click 'Next'.



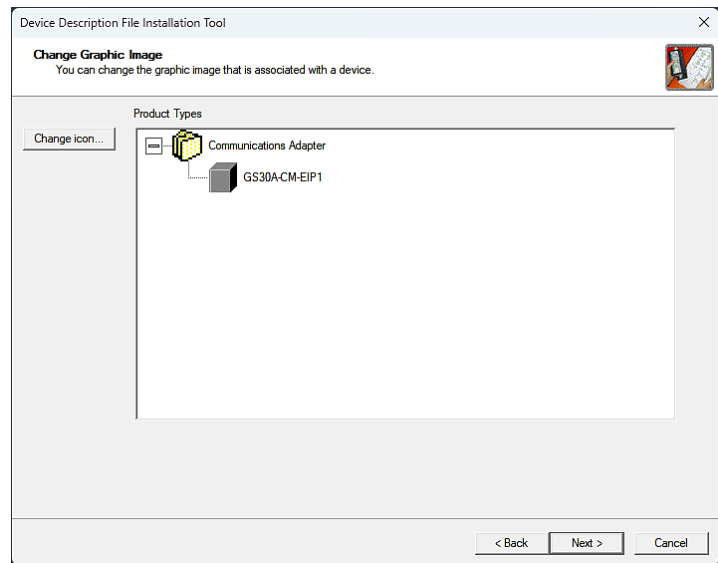
Step 6: The Device Description File Installation Tool (EDS File Wizard) will evaluate the EDS file. The green checkmark indicates a valid EDS file.

Click 'Next'.



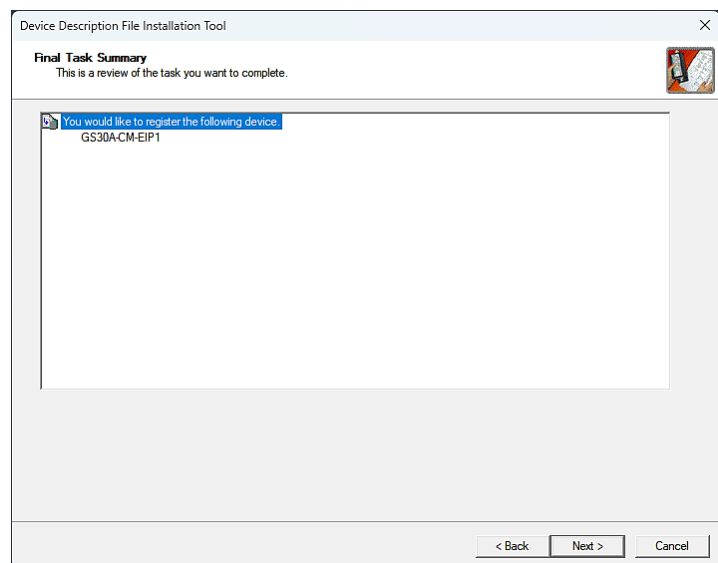
Step 7: The Device Description File Installation Tool (EDS Wizard) allows for the icon of the device to be changed. This step can be skipped.

Click 'Next'.



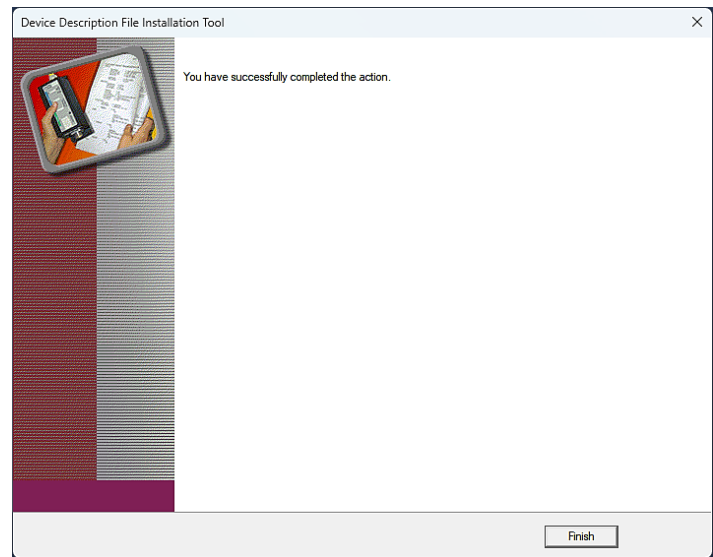
Step 8: Confirm that the EDS file being registered corresponds to the intended device.

Click 'Next'.



Step 9: The EDS file has been successfully registered.

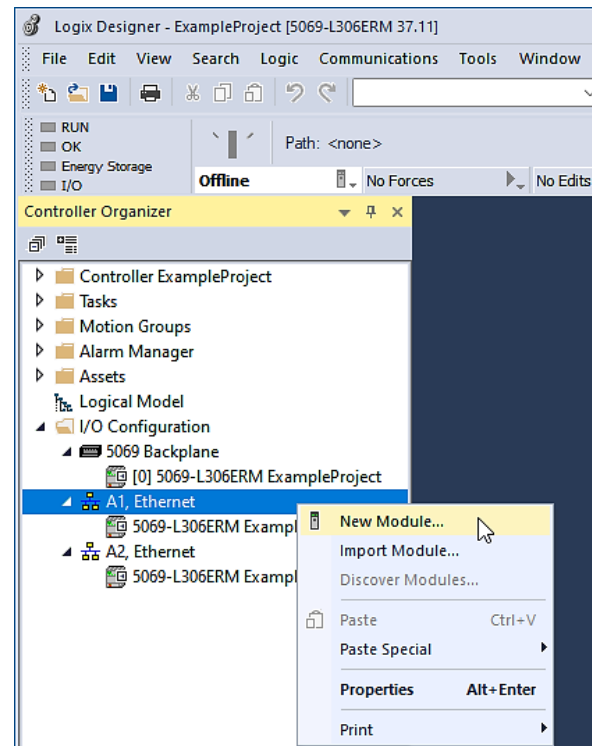
Click 'Finish'.



Create New Module

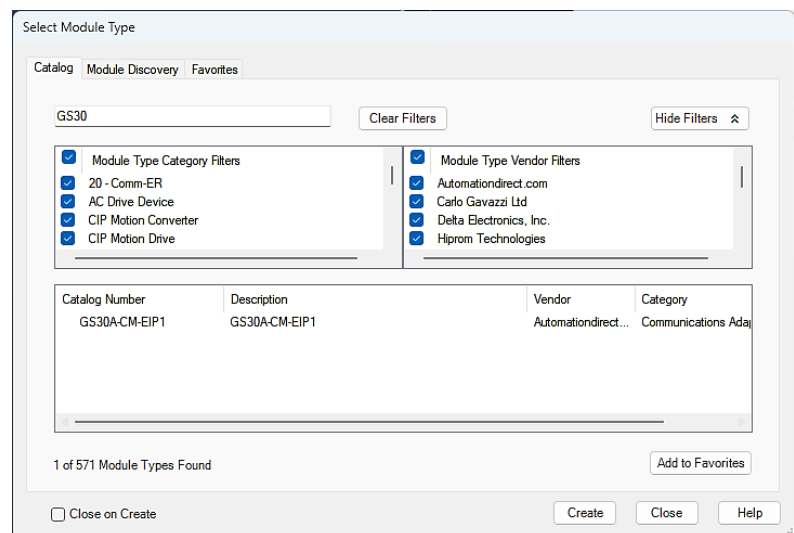
Step 1: In the Studio 5000 project, right-click on the network adapter that is connected to the GS30A-CM-EIP1.

Select 'New Module'.



Step 2: Type the first few characters of part number in the filter field. The GS30A-CM-EIP1 catalog number shows in the results.

Select the result and click 'Create'.



Step 3: In the New Module window, provide the following:

- A name for the device
- The IP address of the GS30A-CM-EIP1

Click 'OK'.

The screenshot shows the 'New Module' window with the following details:

- General Tab:**
 - Type: GS30A-CM-EIP1 GS30A-CM-EIP1
 - Vendor: Automationdirect.com
 - Parent: Local
 - Name: MyGs30
 - Description: (Empty text box)
- Ethernet Address:**
 - Private Network: 192.168.1. (Disabled)
 - IP Address: 10 . 11 . 0 . 50 (Selected)
 - Host Name: (Empty text box)
- Module Definition:**
 - Revision: 1.001
 - Electronic Keying: Compatible Module
 - Connections: Drive Control and Status
- Status:** Creating

Step 4: Close the 'Select Module Type' window.

Step 5: Take note of the Module-Define Data Types created for the Input Data and Output Data arrays:

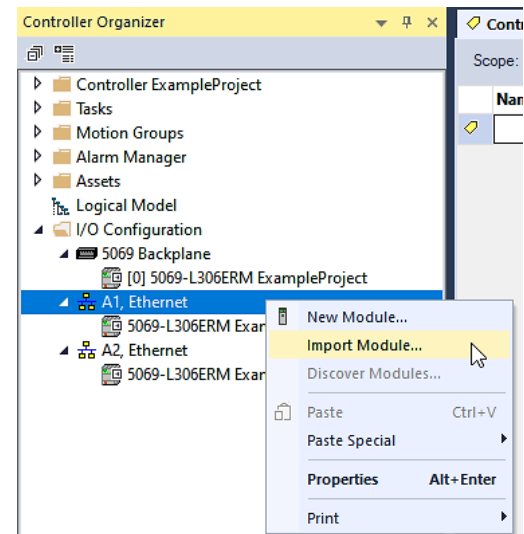
- _0294:GS30A_CM_EIP1_E8411017:I:0
- _0294:GS30A_CM_EIP1_E771E08B:O:0

These Module-Define Data Types will be referenced by the Add-On Instruction for data mapping. A mismatch of these Module-Defined Data Types between the module definition and the Add-On Instruction will lead to errors.

The screenshot shows the 'Controller Tags' window with the following table:

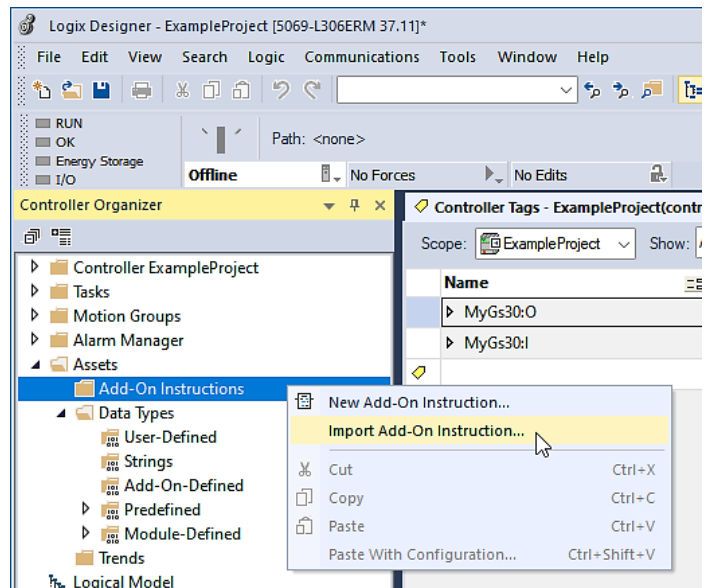
Name	Data Type	Descr
MyGs30:O	_0294:GS30A_CM_EIP1_E771E08B:O:0	
MyGs30:I	_0294:GS30A_CM_EIP1_E8411017:I:0	

Note: If for any reason the Module-Defined Data Types created in the project do NOT match those shown in the walkthrough, use the 'Import Module' feature in the Controller Organizer to import the MODULE definition included in the Add-On Instruction download.



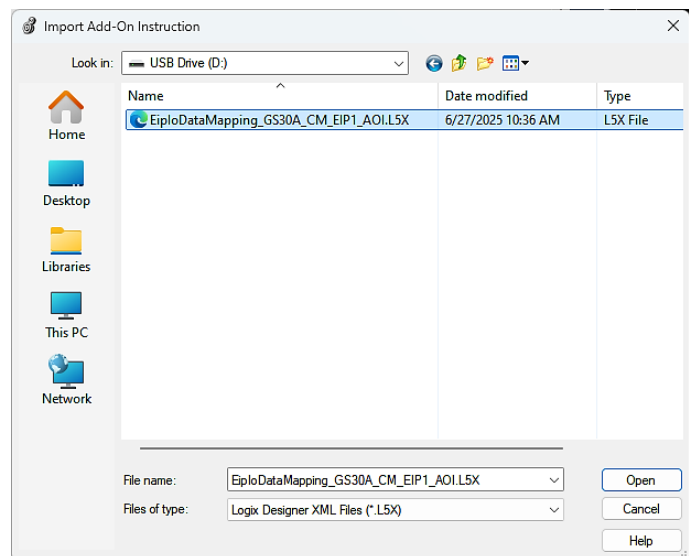
Import Add-On Instruction

Step 1: From the Controller Organizer window, right-click on 'Add-On Instructions' and select 'Import Add-On Instruction.'



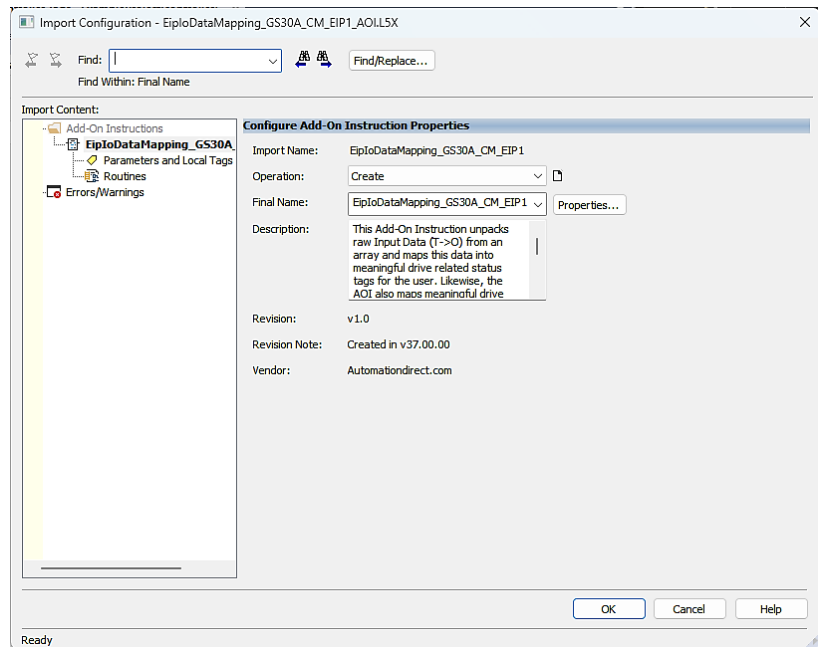
Step 2: Select the directory where the Add-On Instruction file resides.

Click 'Open'.

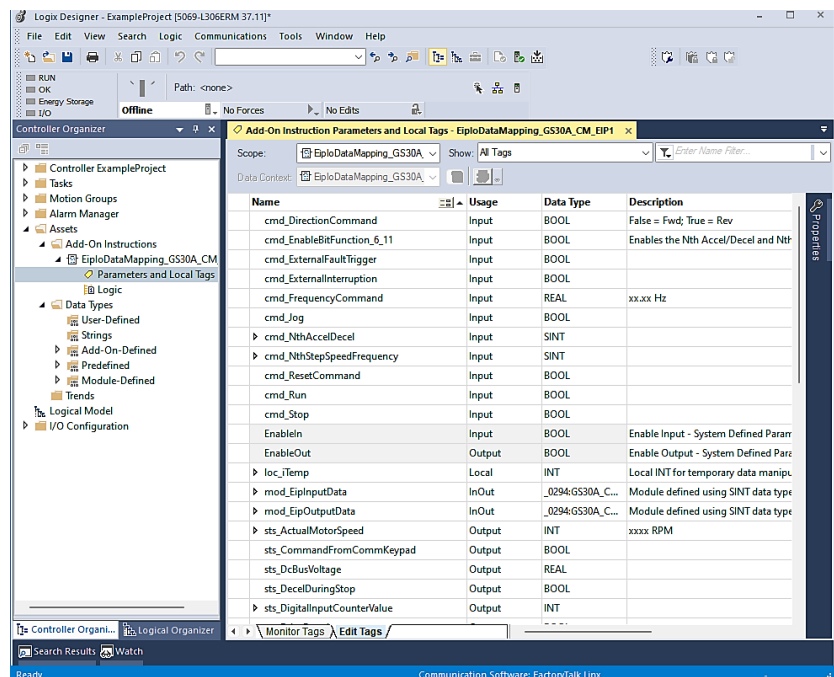


Step 3: The Import Configuration window opens.

Click 'OK'.

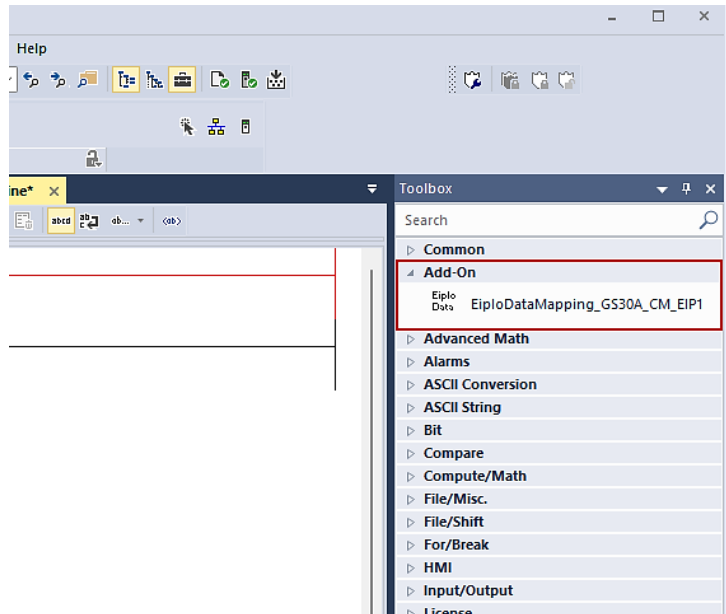


Step 4: The import successfully brings in the Parameters, Local Tags, and Logic that makes up the Add-On Instruction.



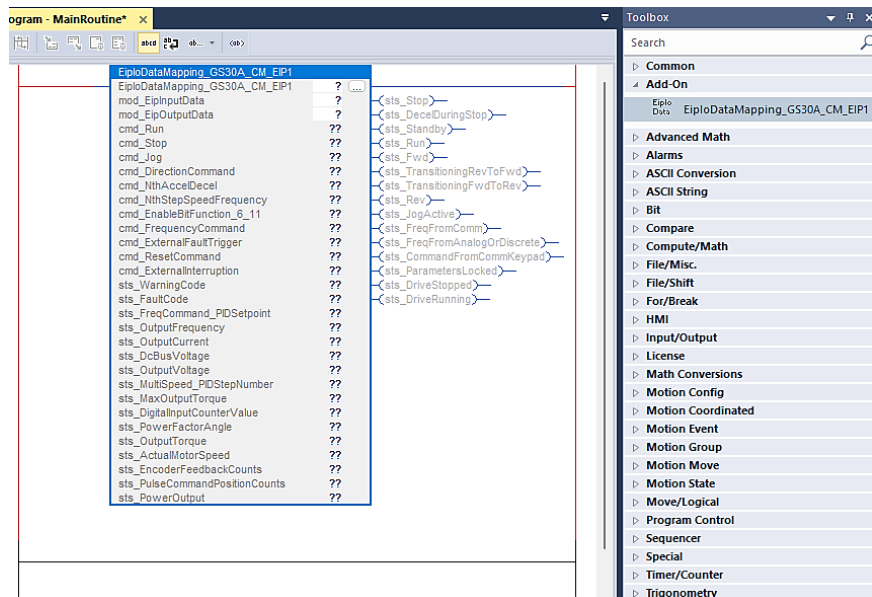
Use Add-On Instruction in Project

Step 1: From the Main Program – Main Routine, drag the Add-On Instruction into the ladder from the ‘Add-On’ instruction category.

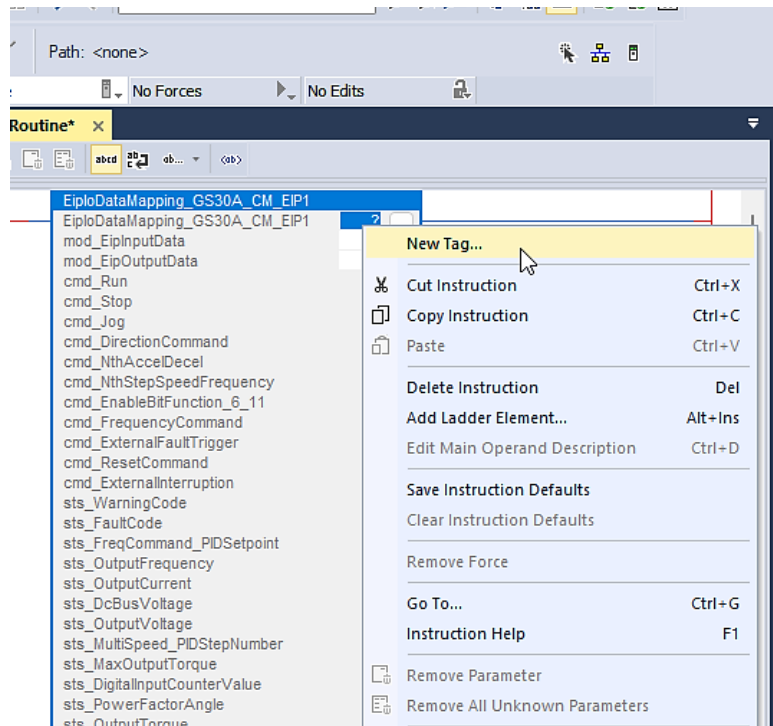


Step 2: Three fields within the Add-On Instruction are required to be completed:

- Specify/create a tag for the instantiated Add-On Instruction.
- Provide the source of the Input Data that will be passed to the Add-On Instruction. This will be the Module-Defined Data Type corresponding to the module Input Data.
- Provide the destination of the Output Data that will be returned from the Add-On Instruction. This will be the Module-Defined Data Type corresponding to the module Output Data.



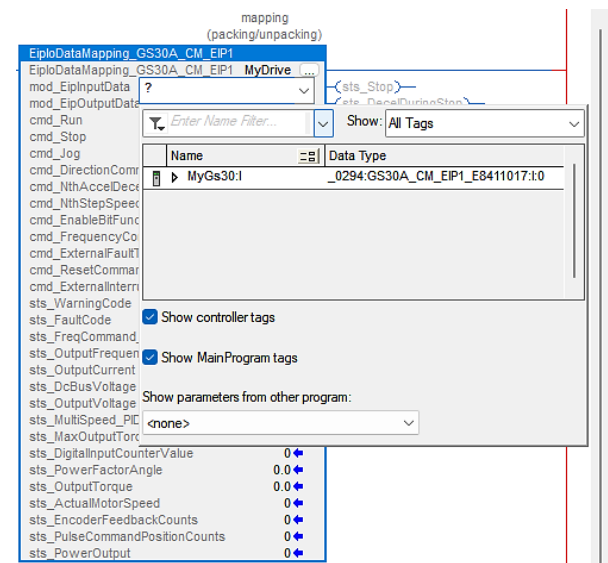
Step 3: Right-click on the name field of the Add-On Instruction and select 'New Tag...'



Provide a Tag Name for the newly created instance of the Add-On Instruction.

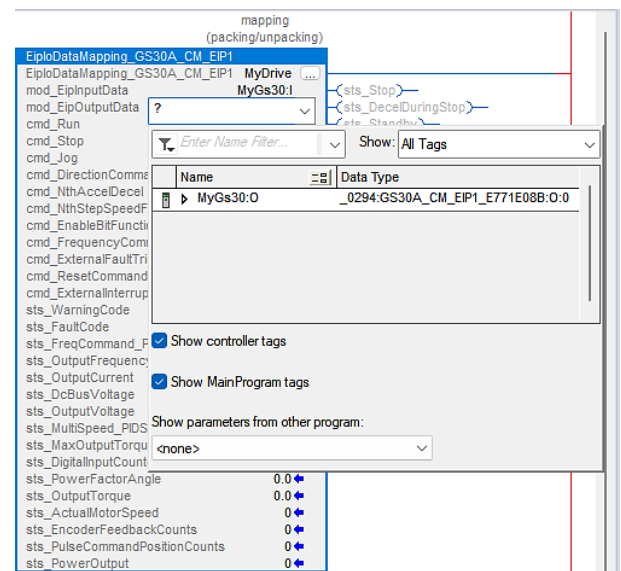
A screenshot of the 'New Tag' dialog box. The dialog has a title bar with a close button. It contains several fields and checkboxes. The 'Name' field is labeled 'Name:' and contains the text 'MyDrive'. To its right is a 'Create' button with a dropdown arrow. The 'Description' field is labeled 'Description:' and is a large text area. The 'Usage' field is labeled 'Usage:' and has a dropdown menu showing '<controller>'. The 'Type' field is labeled 'Type:' and has a dropdown menu showing 'Base' and a 'Connection...' button. The 'Alias For' field is labeled 'Alias For:' and has a dropdown menu. The 'Data Type' field is labeled 'Data Type:' and has a dropdown menu showing 'EiploDataMapping_GS30A_CM_I' and an ellipsis button. The 'Parameter Connection' field is labeled 'Parameter Connection:' and has a dropdown menu. The 'Scope' field is labeled 'Scope:' and has a dropdown menu showing 'ExampleProject'. The 'External Access' field is labeled 'External Access:' and has a dropdown menu showing 'Read/Write'. The 'OPC UA Access' field is labeled 'OPC UA Access:' and has a dropdown menu showing 'None'. The 'Style' field is labeled 'Style:' and has a dropdown menu. At the bottom, there are four checkboxes: 'Constant', 'Sequencing', 'Open Configuration', and 'Open Parameter Connections'. The 'Create' button is highlighted.

Step 4: In the ‘mod_EipInputData’ field, select the Module-Defined Data Type that corresponds to the module’s Input Data.



The Module-Defined Data Type is: _0294:GS30A_CM_EIP1_E8411017:I:0

Step 5: In the ‘mod_EipOutputData’ field, select the Module-Defined Data Type that corresponds to the module’s Output Data.

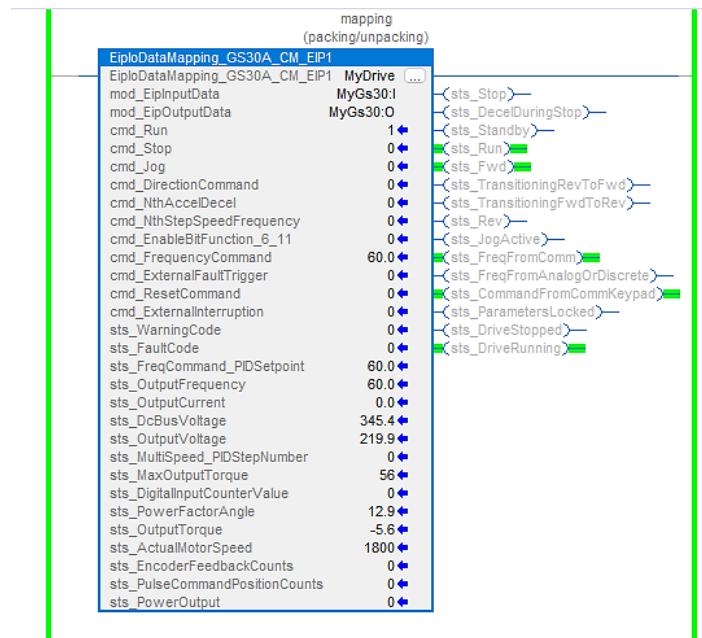


The Module-Defined Data Type is: _0294:GS30A_CM_EIP1_E771E08B:O:0

The object 'MyDrive' has been created with each of the associated structure members defined by the Add-On Instruction definition.

Controller Tags - ExampleProject(controller)		
Scope:	ExampleProject	Show: All Tags
Name		Data Type
MyDrive		EiploDataMapping_GS30A_CM_EIP1
MyDrive.EnableIn		BOOL
MyDrive.EnableOut		BOOL
MyDrive.cmd_Run		BOOL
MyDrive.cmd_Stop		BOOL
MyDrive.cmd_Jog		BOOL
MyDrive.cmd_DirectionCommand		BOOL
MyDrive.cmd_NthAccelDecel		SINT
MyDrive.cmd_NthStepSpeedFrequency		SINT
MyDrive.cmd_EnableBitFunction_6_11		BOOL
MyDrive.cmd_FrequencyCommand		REAL
MyDrive.cmd_ExternalFaultTrigger		BOOL
MyDrive.cmd_ResetCommand		BOOL
MyDrive.cmd_ExternalInterruption		BOOL
MyDrive.sts_WarningCode		SINT
MyDrive.sts_FaultCode		SINT
MyDrive.sts_Stop		BOOL
MyDrive.sts_DecelDuringStop		BOOL
MyDrive.sts_Standby		BOOL
MyDrive.sts_Run		BOOL
MyDrive.sts_Fwd		BOOL
MyDrive.sts_TransitioningRevToFwd		BOOL
MyDrive.sts_TransitioningFwdToRev		BOOL
MyDrive.sts_Rev		BOOL
MyDrive.sts_JogActive		BOOL

Step 6: Download the project to the CPU and observe the mapping of the EtherNet/IP IO Data.



Reference

Studio 5000 Instruction Mnemonic Update Table

In version 36 of Studio 5000, the mnemonics for some instructions were updated by Rockwell to align with IEC-61131-3 and PLCopen standards.

Instruction	Mnemonic in versions 35 and earlier	Mnemonic in versions 36 and later
Arc Cosine	ACS	ACOS
Arc Sine	ASN	ASIN
Arc Tangent	ATN	ATAN
Convert to BCD	TOD	TO_BCD
Convert to Integer	FRD	BCD_TO
Equal To	EQU	EQ
Greater Than	GRT	GT
Greater Than or Equal To	GEQ	GE
Less Than or Equal To	LEQ	LE
Less Than	LES	LT
Limit	LIM	LIMIT
Move	MOV	MOVE
Not Equal To	NEQ	NE
Square Root	SQR	SQRT
Truncate	TRN	TRUNC
X to the Power of Y	XPY	EXPT