



These Application Instructional Videos are provided as a reference for configuring a SureServo2 servo drive for specific applications and functions. They are not meant to be used as the final configuration for your application. These videos contain steps that walk the user through a specific type of application. For detailed information on each parameter the SureServo2 user manual is the suggested document.

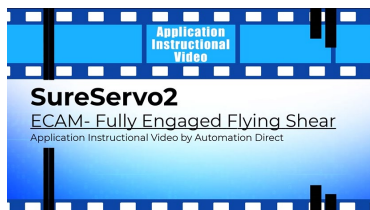
### SureServo2 ECAM Basic Setup



<https://www.automationdirect.com/VID-SV-0093>

This Application Instructional Video walks through and explains the basics of creating an ECAM table and running an ECAM cycle.

### SureServo2 Fully Engaged Flying Shear



<https://www.automationdirect.com/VID-SV-0094>

This Application Instructional Video will create a basic fully engaged flying shear application using a SureServo2 servo drive. Explanation of using Speed Fitting ECAM type to create a forward and back ECAM profile. Forward (cut) and reverse (retract) zones are created using the Speed Fitting ECAM type and then the position elements are exported. Both sets of exported points are combined into one longer ECAM table using Manual type.

For further help please visit:

<https://support.automationdirect.com/>