



# Application Note

THIS INFORMATION PROVIDED BY AUTOMATIONDIRECT.COM TECHNICAL SUPPORT IS PROVIDED "AS IS" WITHOUT A GUARANTEE OF ANY KIND. These documents are provided by our technical support department to assist others. We do not guarantee that the data is suitable for your particular application, nor do we assume any responsibility for them in your application.

**Product Family:** C-more Micro and CLICK

**Number:** AN-EA-016

**Subject:** Windows and the  
EA-MG-PGM-CBL driver

**Date Issued:** January 17, 2022

**Revision:** V2.0

---

The EA-MG-PGM-CBL cable has been in production for many years. Internally, the EA-MG-PGM-CBL has used Prolific's PL2303 chipset for the USB to serial RS-232 conversion. Over the course of those years, Prolific has updated the PL2303 chipset to newer revisions, which means the EA-MG-PGM-CBL hardware revision has changed. The Windows driver depends on the EA-MG-PGM-CBL hardware revision that you have. The different drivers determine which Windows operating systems can be used, Win 10 or Win 11.

There are many different versions of Windows operating system. You have Basic, Home, Enterprise, etc versions, as well as Windows 10 and Windows 11. It also depends on what updates have been installed. There is not a "hard, fast" rule to which driver will always work, it can depend on your installation.

## Windows Compatibility

Windows 10 can use either Rev 1.0, 2.0 or 3.0 EA-MG-PGM-CBL hardware.

Windows 11 must use Rev 3.0 EA-MG-PGM-CBL hardware.



# Application Note

THIS INFORMATION PROVIDED BY AUTOMATIONDIRECT.COM TECHNICAL SUPPORT IS PROVIDED "AS IS" WITHOUT A GUARANTEE OF ANY KIND. These documents are provided by our technical support department to assist others. We do not guarantee that the data is suitable for your particular application, nor do we assume any responsibility for them in your application.

## How To Identify Hardware Revision



### If you have 4-digit date code YMMB

Y = Year (200x or 201x)  
MM = Month (1 = Jan, 2 = Feb, etc)  
B = Internal Use

In the example, the date code is 102B, so it was manufactured in February 2011.

4-digit date codes can be either Rev 1.0 or Rev 2.0 hardware.

- If the date code is October 2012 (210B) or older, then it is Rev 1.0 hardware.
- If the date code is November 2012 (211B) or newer, then it is Rev 2.0 hardware.

### If you have 5-digit date code YYMMB

YY = Year (20YY)  
MM = Month (1 = Jan, 2 = Feb, etc)  
B = Internal Use  
The label will have a revision marking after the date code

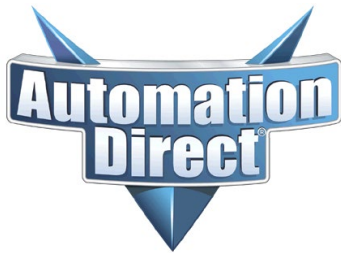
In the example, the date code is 2111B, so it was manufactured in November 2021.

5-Digit date codes can be either Rev 2.0 or Rev 3.0 hardware.

- If the date code is between November 2017 through March 2021 (1711B through 2103B) then it is Rev 2.0 hardware.
- If the date code is from April 2021 (2104B) or newer, then it is Rev 3.0 hardware.

Note: There will be a revision marking on the product label.

**Technical Assistance:** If you have questions regarding this Application Note, please contact [Technical Support](#) for further assistance.



# Application Note

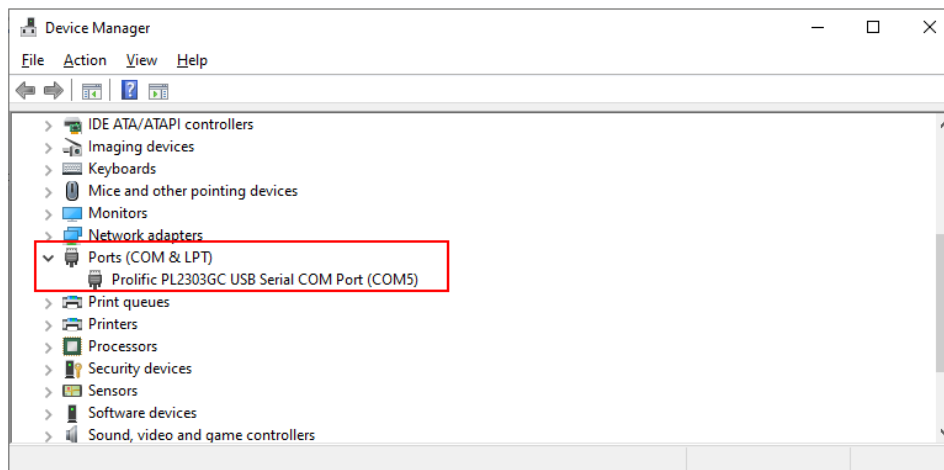
THIS INFORMATION PROVIDED BY AUTOMATIONDIRECT.COM TECHNICAL SUPPORT IS PROVIDED "AS IS" WITHOUT A GUARANTEE OF ANY KIND. These documents are provided by our technical support department to assist others. We do not guarantee that the data is suitable for your particular application, nor do we assume any responsibility for them in your application.

## Windows Drivers

The preinstalled drivers in the Windows operating system should identify and install the correct driver for your EA-MG-PGM-CBL hardware. Ideally, you should use the native Window's driver.

Note: If you are using Rev 1.0 hardware, then you might have to manually install a different driver. See "Rev 1.0 Manual Driver installation" section.

Once the EA-MG-PGM-CBL is plugged into your PC, you should be able to go to Window's Device Manager and see the device under "Ports (COM & LPT)"



## Manually updating the Window's driver

If the native Windows driver does not work on your PC, you can manually update the driver. Download the latest driver at

[https://ftp.automationdirect.com/pub/EA-MG-PGM-CBL\\_drivers.zip](https://ftp.automationdirect.com/pub/EA-MG-PGM-CBL_drivers.zip)

You will have to extract the ZIP file into a temporary installation folder. Once the files are extracted, follow the "PL2303 Widows Driver User Manual" installation PDF included in the ZIP file.



# Application Note

THIS INFORMATION PROVIDED BY AUTOMATIONDIRECT.COM TECHNICAL SUPPORT IS PROVIDED "AS IS" WITHOUT A GUARANTEE OF ANY KIND. These documents are provided by our technical support department to assist others. We do not guarantee that the data is suitable for your particular application, nor do we assume any responsibility for them in your application.

## Rev 1.0 Driver Manual Installation

If the native Windows driver doesn't work and the manual driver installation was also unsuccessful, then you will need to roll back the driver to an earlier version.

1. Make sure Koyo USB-to-Serial Comm Port driver is installed.
  - a) Control Panel >> Programs and Features

Name	Publisher
Google Chrome	Google Inc.
IIS Express Application Compatibility Database for x64	
IIS Express Application Compatibility Database for x86	
Intel® Hardware Accelerated Execution Manager	Intel Corporation
Microsoft .NET Framework 4.5 Multi-Targeting Pack	Microsoft Corporation
Microsoft .NET Framework 4.5 SDK	Microsoft Corporation
Microsoft .NET Framework 4.5.1 Multi-Targeting Pack	Microsoft Corporation
Microsoft .NET Framework 4.5.1 Multi-Targeting Pack (ENU)	Microsoft Corporation
<b>Koyo USB-Serial Comm Port Driver</b>	<b>Koyo Electronics Industries co.,ltd</b>

2. If the item is there, go to Step 4
3. If it is not installed:
  - a) Download the driver installation from the AutomationDirect at [https://ftp.automationdirect.com/pub/EA-MG-PGM-CBL\\_drivers\\_archive.zip](https://ftp.automationdirect.com/pub/EA-MG-PGM-CBL_drivers_archive.zip)
  - b) Extract and Run "PL2303\_Koyo\_All-in-One.exe"
4. Once it is installed

**Note: You will have to do the following for every USB port the first time the EA-MG-PGM-CBL is connected**

- a) Plug the EA-MG-PGM-CBL into a USB port on the PC
- b) Open Device Manager and Expand Ports (COM & LPT)

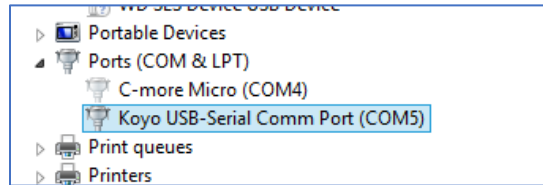
**Technical Assistance:** If you have questions regarding this Application Note, please contact [Technical Support](#) for further assistance.



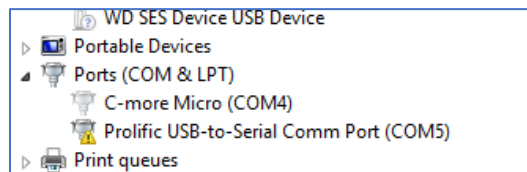
# Application Note

THIS INFORMATION PROVIDED BY AUTOMATIONDIRECT.COM TECHNICAL SUPPORT IS PROVIDED "AS IS" WITHOUT A GUARANTEE OF ANY KIND. These documents are provided by our technical support department to assist others. We do not guarantee that the data is suitable for your particular application, nor do we assume any responsibility for them in your application.

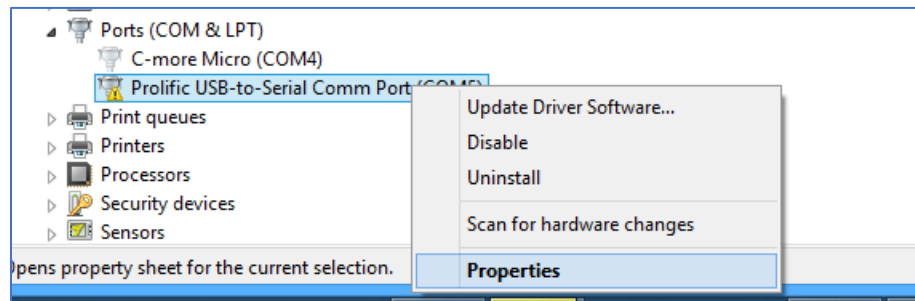
5. If you see "Koyo USB-Serial Comm Port", the port should work fine



6. If you see "Prolific USB-to-Serial Comm Port" with a Yellow Triangle



- a) Then right click on it and select Properties



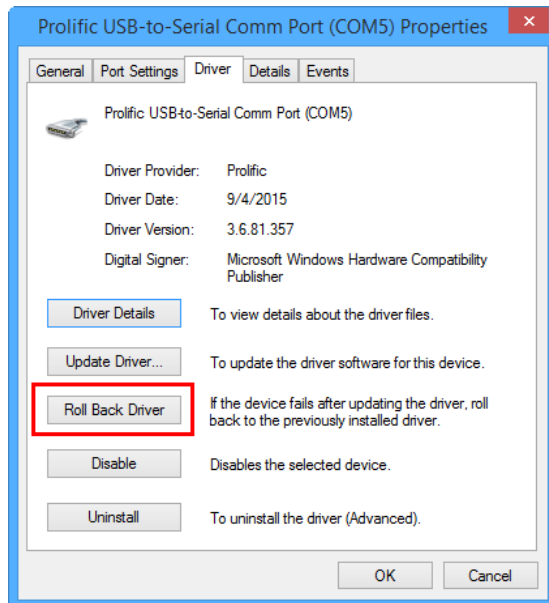
- b) Click the Driver Tab



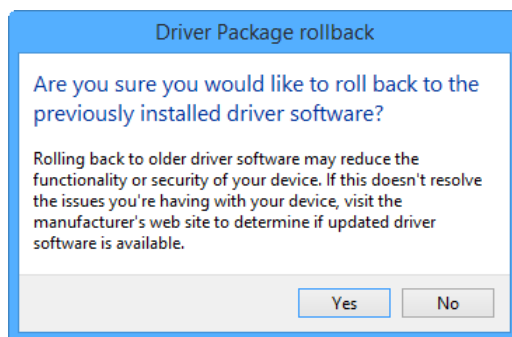
# Application Note

THIS INFORMATION PROVIDED BY AUTOMATIONDIRECT.COM TECHNICAL SUPPORT IS PROVIDED "AS IS" WITHOUT A GUARANTEE OF ANY KIND. These documents are provided by our technical support department to assist others. We do not guarantee that the data is suitable for your particular application, nor do we assume any responsibility for them in your application.

- c) If Roll Back Driver is enabled, then click it. If not go to Step 6f.



- d) Select Yes

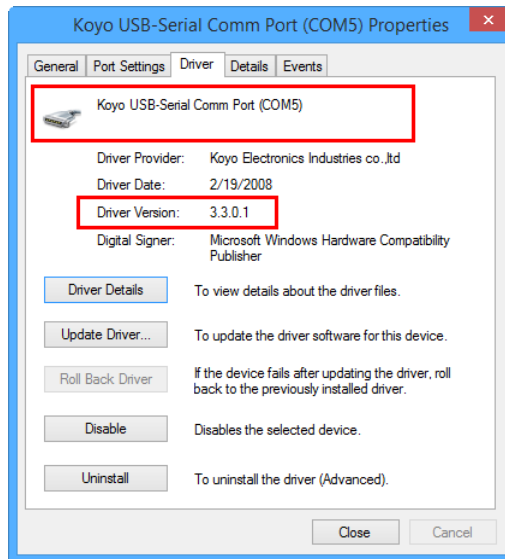


- e) Make sure the Driver Name and version are as shown below

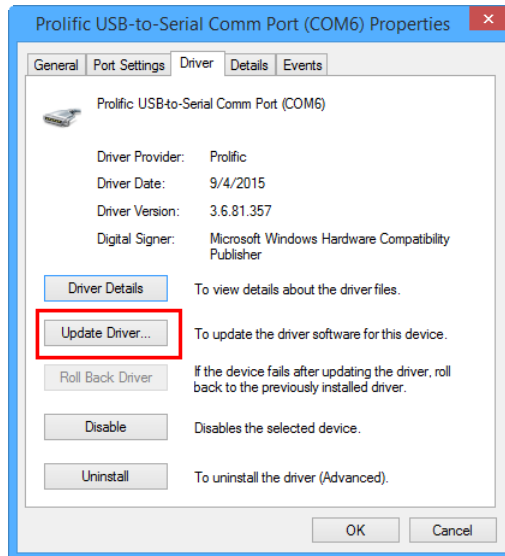


# Application Note

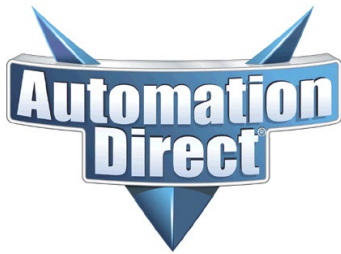
THIS INFORMATION PROVIDED BY AUTOMATIONDIRECT.COM TECHNICAL SUPPORT IS PROVIDED "AS IS" WITHOUT A GUARANTEE OF ANY KIND. These documents are provided by our technical support department to assist others. We do not guarantee that the data is suitable for your particular application, nor do we assume any responsibility for them in your application.



f) If Roll Back Driver is not enabled, then select Update Driver

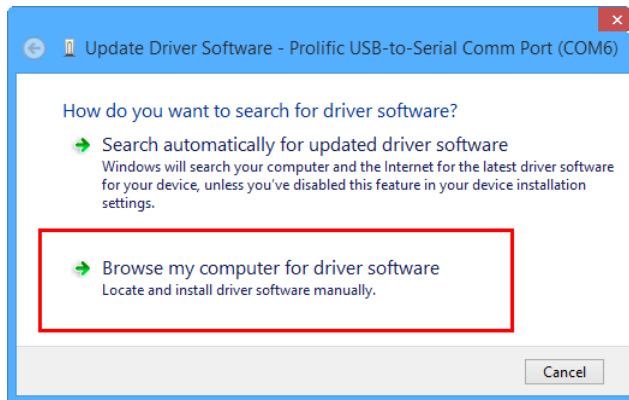


g) Select Browse my Computer for Driver Software

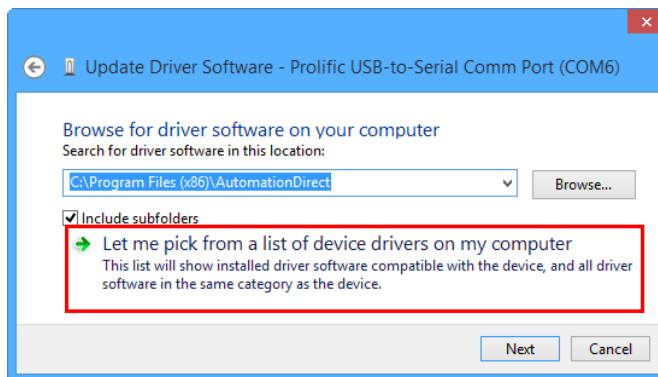


# Application Note

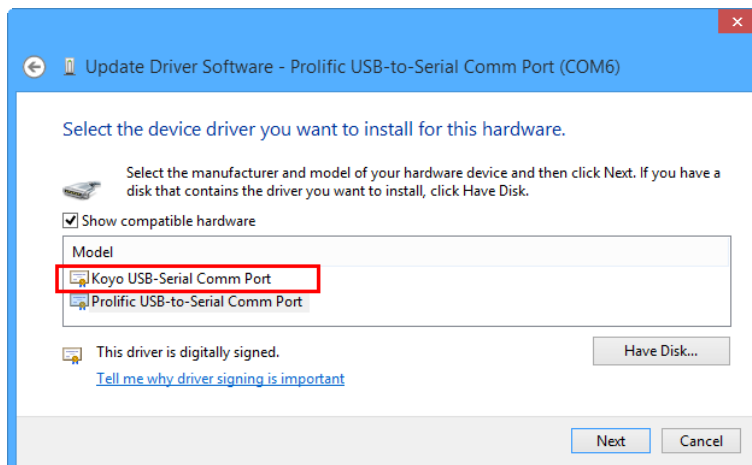
THIS INFORMATION PROVIDED BY AUTOMATIONDIRECT.COM TECHNICAL SUPPORT IS PROVIDED "AS IS" WITHOUT A GUARANTEE OF ANY KIND. These documents are provided by our technical support department to assist others. We do not guarantee that the data is suitable for your particular application, nor do we assume any responsibility for them in your application.



h) Select Let me pick from a list of device drivers on my computer



i) Select Koyo USB-Serial Comm Port (If it is not listed go back and do step 3)



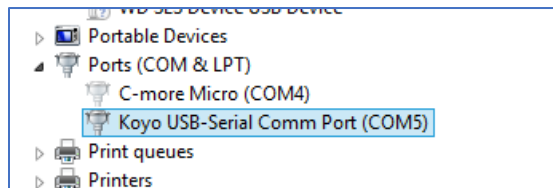




# Application Note

THIS INFORMATION PROVIDED BY AUTOMATIONDIRECT.COM TECHNICAL SUPPORT IS PROVIDED "AS IS" WITHOUT A GUARANTEE OF ANY KIND. These documents are provided by our technical support department to assist others. We do not guarantee that the data is suitable for your particular application, nor do we assume any responsibility for them in your application.

- j) Select Next, the Comm Port will be updated with the Koyo Driver
- k) When finished select Close
- l) You should see the Koyo USB-Serial Comm Port



Note: You will have to repeat this process for each USB port the first time an EA-MG-PGM-CBL is connected to a USB Port

## Multiple devices and drivers

If you have two EA-MG-PGM-CBL devices connected to the PC and one shows the Koyo Driver and the other shows the Prolific Driver and either has a Yellow Triangle, go to Step 6



# Application Note

THIS INFORMATION PROVIDED BY AUTOMATIONDIRECT.COM TECHNICAL SUPPORT IS PROVIDED "AS IS" WITHOUT A GUARANTEE OF ANY KIND. These documents are provided by our technical support department to assist others. We do not guarantee that the data is suitable for your particular application, nor do we assume any responsibility for them in your application.

## If the Previous Procedures Do Not work

The EA-MG-PGM-CBL uses Prolific's PL2303 chipset. If you have Rev 1.0 hardware, you can try installing Prolific's older driver.

[http://www.prolific.com.tw/US/ShowProduct.aspx?p\\_id=223&pcid=126](http://www.prolific.com.tw/US/ShowProduct.aspx?p_id=223&pcid=126)

You will have to extract the ZIP file into a temporary installation folder. Once the files are extracted, follow the "PL2303 Widows Driver User Manual" installation PDF included in the ZIP file.

## Summary of Driver Download Links

Driver Links

Current driver

[https://ftp.automationdirect.com/pub/EA-MG-PGM-CBL\\_drivers.zip](https://ftp.automationdirect.com/pub/EA-MG-PGM-CBL_drivers.zip)

Old Koyo Driver

[https://ftp.automationdirect.com/pub/EA-MG-PGM-CBL\\_drivers\\_archive.zip](https://ftp.automationdirect.com/pub/EA-MG-PGM-CBL_drivers_archive.zip)

Prolific Drivers

These are property of Prolific Technology Inc.

Latest Driver

[http://www.prolific.com.tw/UserFiles/files/PL23XX\\_Prolific\\_DriverInstaller\\_v400.zip](http://www.prolific.com.tw/UserFiles/files/PL23XX_Prolific_DriverInstaller_v400.zip)

Older Driver

[http://www.prolific.com.tw/US/ShowProduct.aspx?p\\_id=223&pcid=126](http://www.prolific.com.tw/US/ShowProduct.aspx?p_id=223&pcid=126)