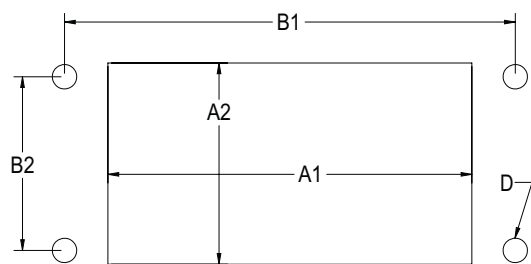




Panel Interface Connectors Dimensions

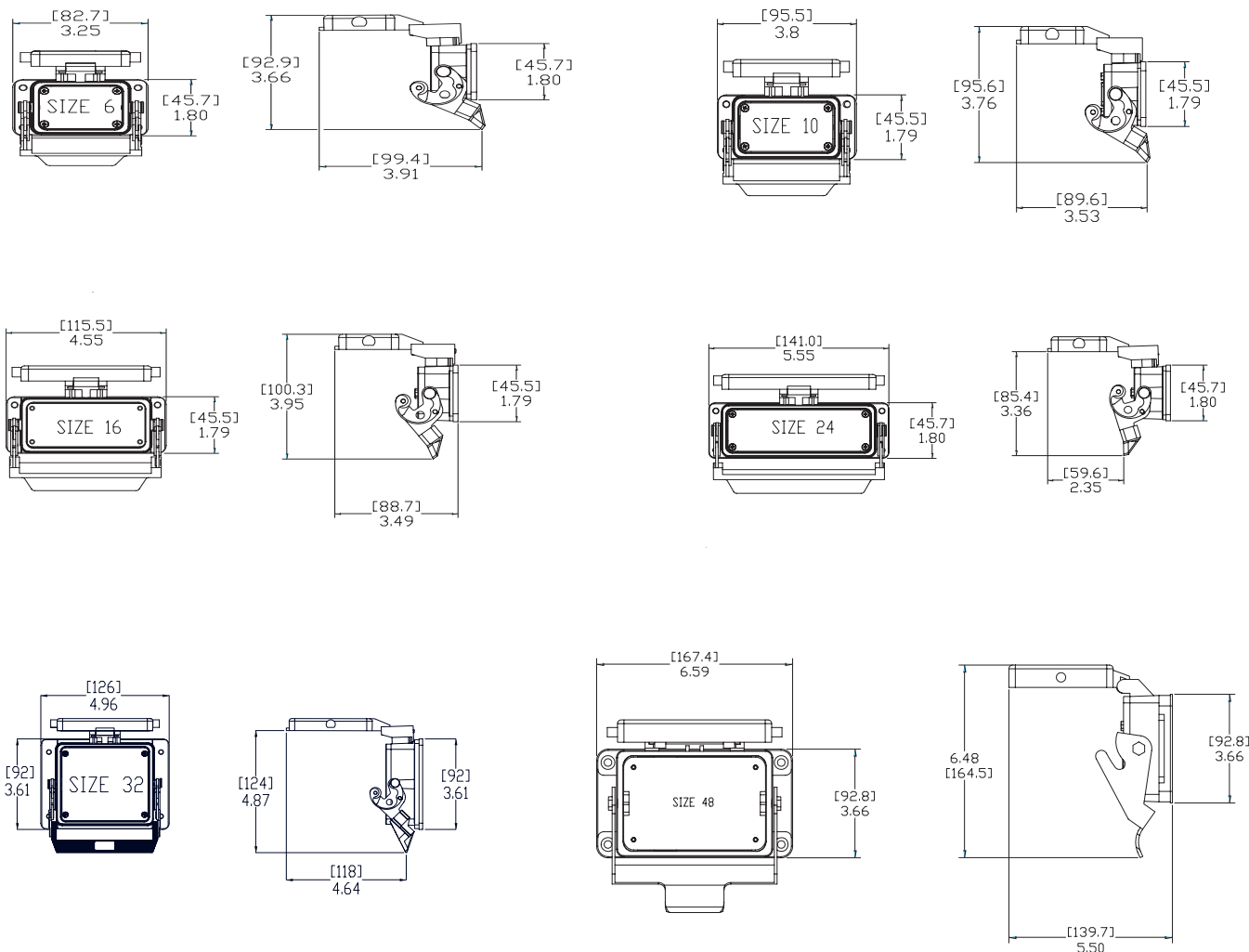
Panel Cutout Dimensions



Panel Cutout Dimensions						
Part	Size	A1	A2	B1	B2	D
ZP-PNA-06-xxx	6	2.13 [54.1]	1.46 [37.1]	2.76 [70.10]	1.26 [32.00]	0.177 [4.50]
ZP-PNA-10-xxx	10	2.64 [67.1]	1.46 [37.1]	3.27 [83.1]	1.26 [32.00]	0.177 [4.50]
ZP-PSA-16-xxx	16	3.46 [87.9]	1.46 [37.1]	4.07 [103.4]	1.26 [32.00]	0.177 [4.50]
ZP-PSA-24-xxx	24	4.10 [104.1]	1.46 [37.1]	5.12 [130.0]	1.26 [32.00]	0.177 [4.50]
ZP-PSA-32-xxx ZP-PDA-32-xxx ZP-PGA-32-xxx	32	3.46 [87.9]	2.99 [75.9]	4.33 [110.0]	2.56 [65.0]	0.177 [4.50]
ZP-PGA-48-xxx	48	4.92 [125.0]	3.19 [81.0]	5.83 [148.1]	2.76 [70.10]	0.256 [6.50]

Note: All dimensions in inches [millimeters]

Housing Dimensions



Note: See our website: www.AutomationDirect.com for complete Engineering Drawings.