

BRYANT® Wiring Devices – Accessories

Features

Nylon Angle Adapter

- Converts 20A and 30A nylon locking plugs and connectors into space saving angle devices
- Adapters permit wire to exit parallel to the receptacle; eliminating space needed for wire to bend

Weather Protective Boots; 5200 Series

- For use with Bryant 15 and 20 Amp straight blade plugs and connectors and 15 Amp locking plug and connectors
- Help prevent moisture, dust and other contaminants from infiltrating plugs and connectors
- Available in high visibility yellow or standard black
- Thermoplastic elastomer construction
- Excellent ozone and weather resistance
- Resistant to deterioration by oils and heat
- IP55 Suitability when installed and used properly with plug and connector body combinations
- Connector sealing ring provides extra protection when plug and connector are not mated
- Ribbed exterior provides firm grip

Weather Protective Boots; 7200 Series

- For use with Bryant 20 and 30 Amp locking plugs and connectors
- Help prevent moisture, dust and other contaminants from infiltrating plugs and connectors
- Chemical/UV resistant construction
- Available in high visibility yellow or standard black
- Ribbed exterior provides firm grip
- Sealing ring seals connector when not mated
- For use with Bryant Triple Gripper® 20 and 30 Amp nylon plugs and connectors
- IP55 Suitability when installed and used properly with plug and connector body combinations

Stainless Steel Cover Plates

Approvals

- UL File E31999*
- CSA Certified 18416*



*Approvals for stainless steel receptacle plates only.

Wiring Devices Accessories		
Part Number	Description	Price
Receptacle Plates		
SS8	Duplex receptacle plate, stainless steel, 15A and 20A straight blade, single-gang box	\$2.75
SS7	Single receptacle plate, stainless steel, 15A and 20A straight blade, 15A locking, single-gang box	\$3.25
SS723	Single receptacle plate, stainless steel, 30A straight blade, single-gang box	\$6.00
SS703	Single receptacle plate, stainless steel, 30A straight blade, two-gang box	\$9.50
SS720	Single receptacle plate, stainless steel, 20A and 30A locking, single-gang box	\$4.75
Angle Adapter*		
70204ANA	Angle adapter for 20A and 30A locking plugs and connectors	\$25.50
Weather Boots*		
5200BP	Weather boot for 15A locking, 15A straight, and 20A straight blade plugs. YELLOW thermoplastic elastomer	\$16.50
5200BC	Weather boot for 15A locking, 15A straight, and 20A straight blade connector. YELLOW thermoplastic elastomer	\$19.00
5200BSR	Connector boot sealing ring for 5200BC boot. YELLOW thermoplastic elastomer	\$23.50
5200BPB	Weather boot for 15A locking, 15A straight, and 20A straight blade plugs. BLACK thermoplastic elastomer	\$16.50
5200BCB	Weather boot for 15A locking, 15A straight, and 20A straight blade connector. BLACK thermoplastic elastomer	\$19.50
5200BSRB	Connector boot sealing ring for 5200BC boot. BLACK thermoplastic elastomer	\$23.50
72002BC	Weather boot for 20A and 30A locking connector. YELLOW neoprene	\$27.00
72002BP	Weather boot for 20A and 30A locking plug. YELLOW neoprene	\$21.00
72002BPB	Weather boot for 20A and 30A locking plugs. BLACK thermoplastic elastomer	\$21.00
72002BCB	Weather boot for 20A and 30A locking connectors. BLACK thermoplastic elastomer	\$22.00



**Stainless Steel
Receptacle Plates**



**Angle Adapter
70204ANA**

*Angle adapter and weather boots are not UL listed or CSA certified.

BRYANT® Wiring Devices – Accessories



72002BC
Weather Boot

Note: Connectors shown on above installations are not included and are purchased separately.



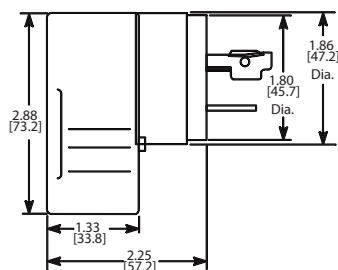
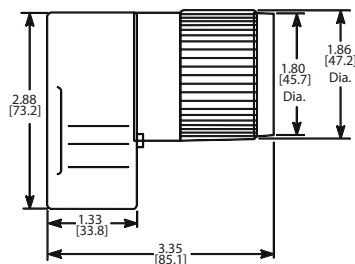
Angle Adapter 70204ANA



Dimensions

inches [mm]

Angle Adapter



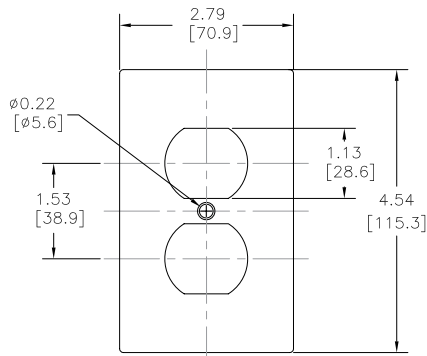
Angle Adapter

Wiring Devices – Accessories Drawings

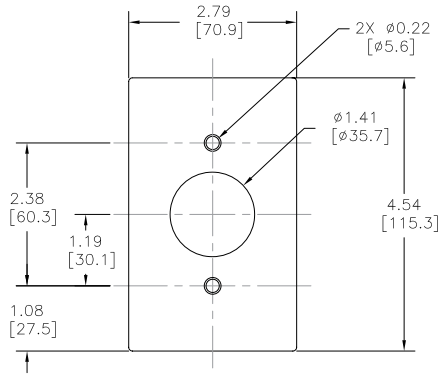
Dimensions

inches [mm]

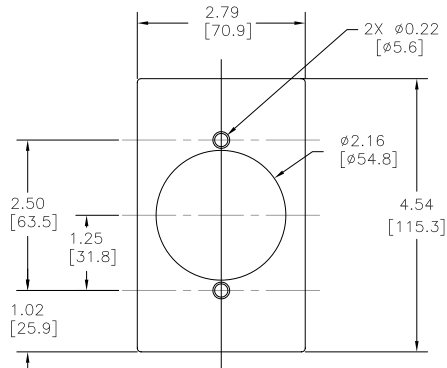
Stainless Steel Cover Plates



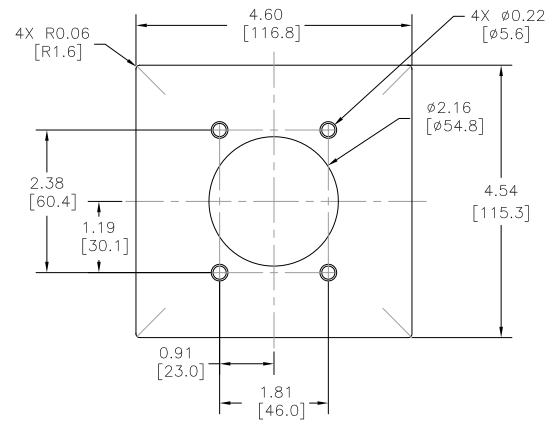
SS8



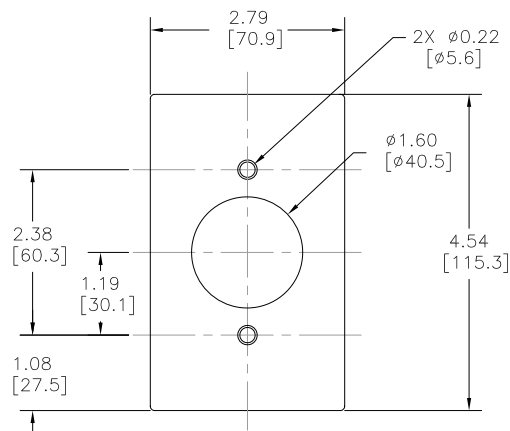
SS7



SS723



SS703



SS720