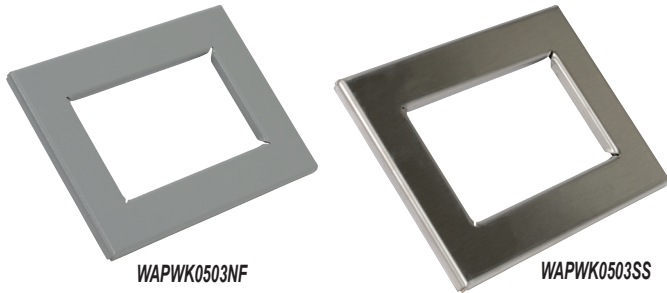


Enclosure Accessories - Window Kits



Construction

- Steel has ANSI 61 gray powder coat finish
- 304 Stainless steel has grained finish
- Makrolon polycarbonate window
- Integral closed-cell gasket and mounting hardware
- Steel windows for indoor use with NEMA 12
- Stainless steel windows for indoor use with NEMA 12 and 13 enclosures

Applications

Window kits are easily installed by making a cutout in the enclosure and attaching the window and frame in place. All necessary hardware is included. Kits are fully gasketed to maintain a NEMA 12/ NEMA 13 oil-tight seal.

Shipping Schedule

Same day 1 - 5 days 1 - 7 days 1 - 15 days 1 - 20 days

Color indicates shipping lead time in business days.

ANSI 61 Gray Steel	Price	304 Stainless Steel	Price	Wt. [lb]	Window Size	Frame Size	Required Cutout Size
WAPWK0503NF	\$132.00	WAPWK0503SS	\$283.00	2.2	5.00 x 3.00 [127 x 76]	7.50 x 5.50 [191 x 140]	6.69 x 4.69 [170 x 119]
WAPWK0905NF	\$159.00	WAPWK0905SS	\$342.00		9.00 x 5.50 [229 x 140]	11.50 x 8.00 [292 x 203]	10.69 x 7.19 [272 x 183]
WAPWK1308NF	\$201.00	WAPWK1308SS	\$381.00	3.1	13.00 x 8.00 [330 x 203]	15.50 x 10.50 [394 x 267]	14.69 x 9.69 [373 x 170]
WAPWK1705NF	\$196.00	—	—	4.4	17.00 x 5.50 [432 x 140]	19.50 x 8.00 [495 x 203]	18.69 x 7.19 [475 x 183]
WAPWK1711NF	\$301.00	WAPWK1711SS	\$571.00	6.8	17.00 x 11.00 [432 x 279]	19.50 x 13.50 [495 x 343]	18.69 x 12.69 [475 x 322]
WAPWK2315NF	\$343.00	WAPWK2315SS	\$736.00	8.2	23.00 x 15.00 [584 x 381]	25.50 x 17.50 [648 x 445]	24.69 x 16.69 [627 x 424]
WAPWK2919NF	\$551.00	—	—	10.9	29.00 x 19.00 [737 x 483]	31.50 x 21.50 [800 x 546]	30.69 x 20.69 [780 x 526]
WAPWK3523NF	\$672.00	—	—		35.00 x 23.00 [889 x 584]	37.50 x 25.50 [953 x 648]	36.69 x 24.69 [932 x 627]

Notes: Dimensions in inches [millimeters].