

KS 50 Elements Quick Selection Guide

STEP 1 - Optical Elements Quick Selection Guide				
Type of Light	Part Number	Color	Operating Voltage	Price
Incandescent Permanent*	84610000	Red	12-240V AC/DC	\$23.50
	84620000	Green		\$23.50
	84630000	Yellow		\$23.50
	84640000	Clear		\$23.50
	84650000	Blue		\$23.50
Bulbs	95584035	Clear	24VDC	\$8.75
	95584038	Clear	230VAC	\$8.75
	95584057	Clear	115VAC	\$8.75
LED Permanent	84810055	Red	24V AC/DC	\$76.00
	84820055	Green		\$76.00
	84830055	Yellow		\$76.00
	84840055	Clear		\$116.00
	84850055	Blue		\$116.00
	84810067	Red	115VAC	\$88.00
	84820067	Green		\$88.00
	84830067	Yellow		\$88.00
	84840067	Clear		\$116.00
	84850067	Blue		\$129.00
LED Blinking Light	84811075	Red	24V AC/DC	\$76.00
	84821075	Green		\$76.00
	84831075	Yellow		\$76.00
	84841075	Clear		\$101.00
	84851075	Blue		\$116.00
	84811067	Red	115VAC	\$88.00
	84821067	Green		\$88.00
	84831067	Yellow		\$88.00
	84841067	Clear		\$129.00
	84851067	Blue		\$129.00
LED Flashing Light Element	84812055	Red	24VDC	\$151.00
	84822055	Green		\$175.00
	84832055	Yellow		\$151.00
	84842055	Clear		\$201.00
	84852055	Blue		\$201.00

* Note: Bulbs are required for permanent incandescent optical element

STEP 2 - Audible Elements Quick Selection Guide					
Part Number	Description	Voltage	Tone Frequency	Maximum Volume	Price
84900075	Buzzer element	24V AC/DC	2.1 kHz	80dB	\$64.00
84900077		115V AC/DC			\$67.00

STEP 3 - Terminal Element Quick Selection			
Part Number	Description	Mounting	Price
84500000	Screw terminal element for KS 50	surface, tube, single-hole or bracket mount	\$31.50

STEP 4 - Mounting Options/Accessories Quick Selection		
Part Number	Description	Price
97584510	Anodized tube, 100mm [3.94 in] long	\$13.50
97584025	Anodized tube, 250mm [9.84 in] long	\$17.00
97584040	Anodized tube, 400mm [15.75 in] long	\$22.50
97584060	Anodized tube, 600mm [23.62 in] long	\$30.00
97584080	Anodized tube, 800mm [31.49 in] long	\$38.50
97584003	Anodized tube, 1000mm [39.37 in] long	\$52.00
97584090	Plastic base for 25mm [0.98 in] diameter tube	\$14.50
97584091	Metal base for 25mm [0.98 in] diameter tube	\$22.50
96000030	Foldaway base for 25mm [0.98 in] diameter tube	\$60.00
97584501	Base for surface mounting, includes rubber seal	\$16.50
97584502	Bracket for wall mounting	\$23.50

STEP 5 - Contact Boxes & Brackets Quick Selection		
Part Number	Description	Price
97584001	Contact box with side exit cable	\$20.00
97584004	Contact box with magnetic base and side exit cable	\$55.00
96000014	Bracket for base mounting with concealed cable entry	\$22.00
96000001	Bracket for base mounting	\$18.00



KS 50 LED Light Element

KS 50 Optical Elements Specifications

KS 50 Optical Elements Technical Specifications												
Part Number	Color	Drawing Link	Description	Operating Voltage	Current Consumption	Starting Current	Operating Temp/ Protection	Life Duration	Flash Frequency	Housing Material	Weight g [oz]	
84610000	Red	PDF	Incandescent Permanent Light	12-240V AC/DC (bulb sold separately)	Depends on bulb selection. (bulb sold separately)	-	-20 to 50°C [-4 to 122°F] IP54	up to 5,000h	-	Polycarbonate	40 [1.41]	
84620000	Green	PDF										
84630000	Yellow	PDF										
84640000	Clear	PDF										
84650000	Blue	PDF										
84810055	Red	PDF	LED Permanent Light Element	24V AC/DC	max. 45mA	max. 500mA	-20 to 50°C [-4 to 122°F] IP54	up to 100,000h	-	Polycarbonate	45 [1.59]	
84820055	Green	PDF										
84830055	Yellow	PDF										
84840055	Clear	PDF										
84850055	Blue	PDF										
84810067	Red	PDF		115VAC	max. 25mA	-	-20 to 50°C [-4 to 122°F] IP54	up to 100,000h	-	Polycarbonate	45 [1.59]	
84820067	Green	PDF										
84830067	Yellow	PDF										
84840067	Clear	PDF										
84850067	Blue	PDF										
84811075	Red	PDF	LED Blinking Light Element	24V AC/DC	max. 25mA	max. 500mA	-20 to 50°C [-4 to 122°F] IP54	up to 100,000h	1Hz on for 550ms	Polycarbonate	45 [1.59]	
84821075	Green	PDF										
84831075	Yellow	PDF										
84841075	Clear	PDF										
84851075	Blue	PDF										
84811067	Red	PDF		115VAC	max. 25mA	-	-20 to 50°C [-4 to 122°F] IP54	up to 100,000h	1Hz on for 550ms	Polycarbonate	45 [1.59]	
84821067	Green	PDF										
84831067	Yellow	PDF										
84841067	Clear	PDF										
84851067	Blue	PDF										
84812055	Red	PDF	LED Flashing Light Element	24VDC	45mA	max. 500mA	-20 to 50°C [-4 to 122°F] IP54	up to 50,000h	1Hz on for 10ms	Polycarbonate	56 [1.98]	
84822055	Green	PDF			40mA							
84832055	Yellow	PDF			45mA							
84842055	Clear	PDF			40mA							
84852055	Blue	PDF			40mA							



KS 50 Incandescent Permanent Light Element



Bulbs for Incandescent Permanent Optical Element				
Part Number	Description	Wattage	Voltage	Life Duration
95584035	Bulb for Incandescent Light BA15d Bayonet Socket	5W	24VDC	up to 5,000h
95584038			230VAC	
95584057			115VAC	

Configuring Your KombiSIGN 50 Stack Light

STEP 1

Select the required optical elements for your application



- Optical Signal Elements**
- Incandescent Permanent Light
 - LED Permanent Light
 - LED Blinking Light
 - LED Flashing Light

STEP 2

Select the optional audible element for your application



- Audible Signal Elements**
- Buzzer Element

STEP 3

Select the terminal element for your mounting option (includes cap)



Terminal element for surface, tube, single hole and bracket mounting

Order no. **84500000**

Base/Bracket Mounting

Tube Mounting

STEP 4

Select the appropriate mounting option and accessories



Bracket for wall mounting

Order no. **97584502**



Base for surface mounting, includes rubber seal

Order no. **97584501**

- Tube Ø 25mm, all anodized
- | | |
|--------------|---------------------------|
| 100 mm long | Order no. 97584510 |
| 250 mm long | Order no. 97584025 |
| 400 mm long | Order no. 97584040 |
| 600 mm long | Order no. 97584060 |
| 800 mm long | Order no. 97584080 |
| 1000 mm long | Order no. 97584003 |

Base for Tube, plastic
Order no. **97584090**

Base for Tube, metal
Order no. **97584091**

Foldaway Base
Order no. **96000030**



STEP 5

Where appropriate, select the bracket and the contact box



Contact box with side cable exit
Order no. **97584001**



Contact box with magnetic base and side cable exit
Order no. **97584004**



Bracket for base mounting with concealed cable entry
Order no. **96000014**



Bracket for base mounting
Order no. **96000001**

Werma Modular Stack Lights Overview



WERMA

S I G N A L T E C H N I K

Description

WERMA's modular stack light system offers total choice and flexibility as it allows for a completely free combination of optical and audible signal elements. The bayonet mechanism allows elements to be mechanically and electrically connected within seconds.

This means that elements can be safely and easily changed (contact-voltage proof) without the need for tools.

Typical product applications include; machine tools, packaging machines, conveyor systems, printing machines, loading docks, retail centers (check outs), queuing indicators for theme parks, and more.

Product highlights:

- Signal elements in common voltages (24V DC and 115V AC)
- Modular system allows combination as required
- Two different sizes (70 and 50 mm diameter)
- Five colors available
- Wide range of audible elements
- Diverse and flexible solutions

Simple assembly with bayonet mechanism

- Simple mounting and removal of the elements
- New combinations at the twist of a hand
- Tool-free bulb change
- Position marks to guide alignment



Werma Stack Lights Family Overview

KombiSIGN 71

Modular IP65-rated stack light system with 70 mm diameter for use in standard applications.

KS 71 stack lights are available in 5 colors and multiple light effects (permanent, blinking, rotating, flashing). Multiple light sources (incandescent, LED, Xenon tube) and a wide variety of mountings are available. Combine up to 5 elements per terminal. Various terminal design choices are available as well as multiple voltages and audible elements up to 105 dB.

KS 71 Terminal Elements



Screw terminals



CAGE CLAMP® terminals

KombiSIGN 50

Modular IP54-rated stack light system with 50 mm diameter for use on smaller machines.

KS 50 stack lights are available in 5 colors with either permanent or blinking light effects in multiple voltages. A choice of incandescent or LED light sources is available as well as an 80 dB audible element. Elements can be combined in a variety of mountings, up to 4 elements per mounting for 360° of visibility.

KS 50 Terminal Element

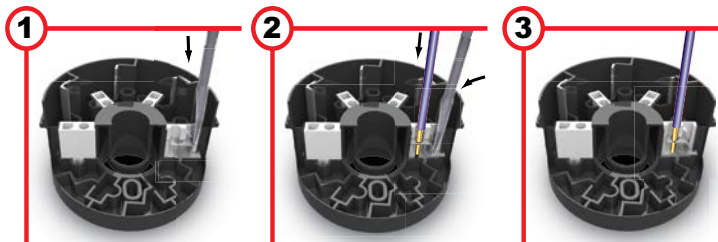


Screw terminal



Safe and Efficient Connection Thanks to CAGE CLAMP® Technology

Terminal elements with CAGE CLAMP® technology enable leads to be quickly and easily wired, guaranteeing a secure and reliable contact.



1. Insert screwdriver at a slight angle into opening as far as possible.

2. Open spring-loaded clamp with the help of the screwdriver and insert wire as far as possible.

3. Remove screwdriver - the wire is firmly clamped.

CAGE CLAMP is a registered trademark of WAGO Kontakttechnik GmbH.