




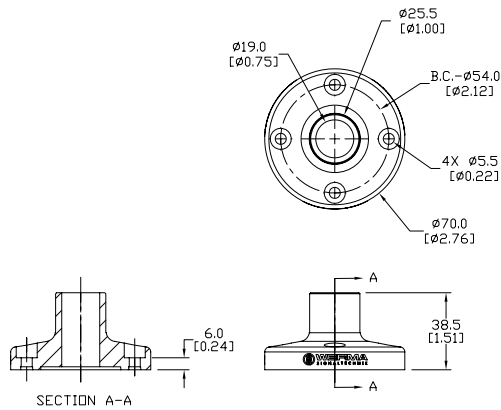


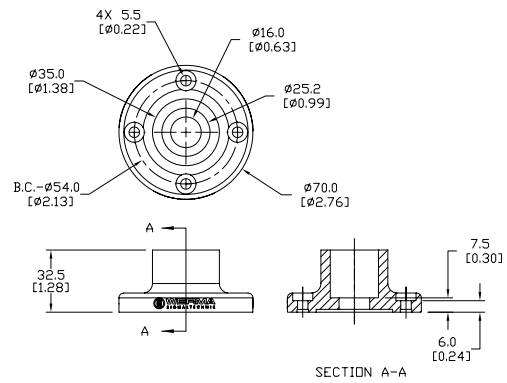
KS 50 Mounting Hardware and Accessories

| KS 50 Mounting Hardware and Accessories Specifications | | | | | |
|---|-----------------|---|----------------------------------|-------------------------------|-----------------|
| Part Number | Description | Operating Temp. | Material | Weight | |
|  | 97584510 | Tube, 100mm [3.94 in] | -20°C to 50°C [-4°F to 122°F] | Anodized aluminum | 30g [1.06 oz] |
| | 97584025 | Tube, 250mm [9.84 in] | | | 73g [2.57 oz] |
| | 97584040 | Tube, 400mm [15.75 in] | | | 120g [4.23 oz] |
| | 97584060 | Tube, 600mm [23.62 in] | | | 180g [6.35 oz] |
| | 97584080 | Tube, 800mm [31.49 in] | | | 236g [8.32 oz] |
| | 97584003 | Tube, 1000mm [39.37 in] | | | 296g [10.44 oz] |
|  | 97584090 | Plastic base for 25mm [0.98 in] diameter tube | -20°C to 50°C [-4°F to 122°F] | Polyamide Glass Reinforced | 40g [1.41 oz] |
|  | 97584091 | Metal base for 25mm [0.98 in] diameter tube | -20°C to 50°C [-4°F to 122°F] | Anodized Aluminum | 110g [3.88 oz] |
|  | 96000030 | Foldaway base for 25mm [0.98 in] diameter tube | - | Polyamide Glass Reinforced | 165g [5.82 oz] |
|  | 97584501 | Base for surface mounting, includes rubber seal | -20°C to 60°C [-4°F to 140°F] | Polyamide Glass Reinforced | 35g [1.23 oz] |

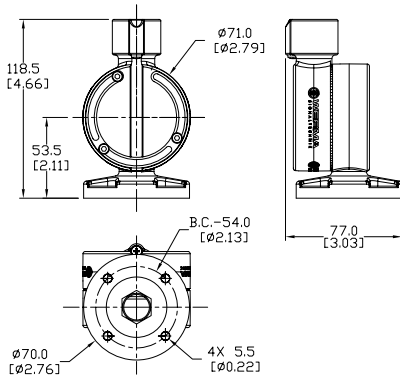
Dimensions in mm [in]



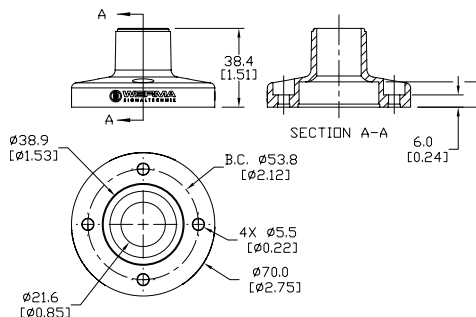
97584090



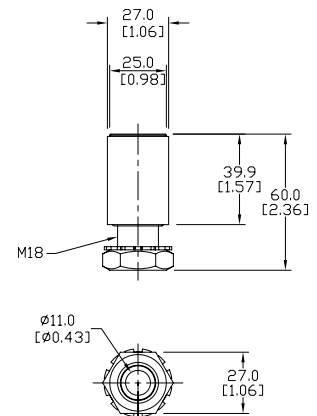
97584091



96000030



97584501



97584503