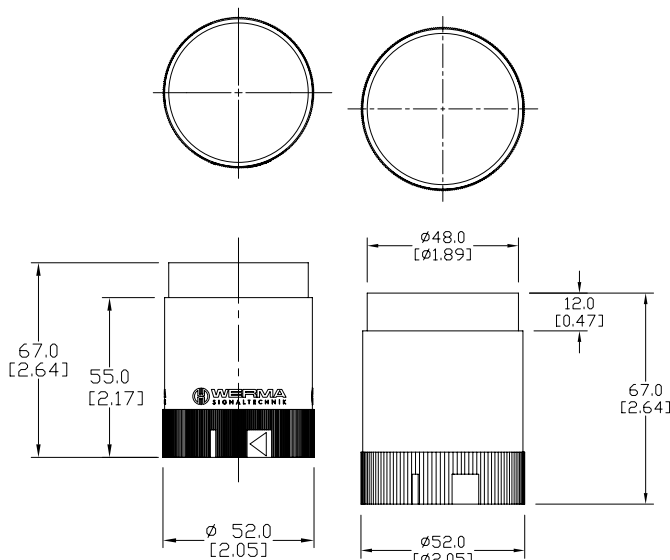


KS 50 Optical Elements Specifications

KS 50 Optical Elements Technical Specifications										
Description	Operating Voltage	Part Number	Color	Current Consumption	Starting Current	Operating Temp/Protection	Life Duration	Flash Frequency	Housing Material	Weight
Incandescent Permanent Light	12-240V AC/DC (bulb sold separately)	84610000	Red	Depends on bulb selection. (bulb sold separately)	-	-20°C to 50°C [-4°F to 122°F] IP54	up to 5,000h	-	Polycarbonate	40g [1.41 oz]
		84620000	Green							
		84630000	Yellow							
		84640000	Clear							
		84650000	Blue							
LED Permanent Light Element	24V AC/DC	84810055	Red	max. 45mA	max. 500mA	-20°C to 50°C [-4°F to 122°F] IP54	up to 100,000h	-	Polycarbonate	45g [1.59 oz]
		84820055	Green							
		84830055	Yellow							
		84840055	Clear							
		84850055	Blue							
	115VAC	84810067	Red	max. 25mA	-	-20°C to 50°C [-4°F to 122°F] IP54	up to 100,000h	-	Polycarbonate	45g [1.59 oz]
		84820067	Green							
		84830067	Yellow							
		84840067	Clear							
		84850067	Blue							
LED Blinking Light Element	24V AC/DC	84811075	Red	max. 25mA	max. 500mA	-20°C to 50°C [-4°F to 122°F] IP54	up to 100,000h	1Hz on for 550ms	Polycarbonate	45g [1.59 oz]
		84821075	Green							
		84831075	Yellow							
		84841075	Clear							
		84851075	Blue							
	115VAC	84811067	Red	max. 25mA	-	-20°C to 50°C [-4°F to 122°F] IP54	up to 100,000h	1Hz on for 550ms	Polycarbonate	45g [1.59 oz]
		84821067	Green							
		84831067	Yellow							
		84841067	Clear							
		84851067	Blue							
LED Flashing Light Element	24VDC	84812055	Red	45mA	max. 500mA	-20°C to 50°C [-4°F to 122°F] IP54	up to 50,000h	1Hz on for 10ms	Polycarbonate	56g [1.98 oz]
		84822055	Green	40mA						
		84832055	Yellow	45mA						
		84842055	Clear	40mA						
		84852055	Blue	40mA						

Dimensions in mm [in]



KS 50 Optical Element Dimensions

848xxxxx



KS 50 Incandescent Permanent Light Element



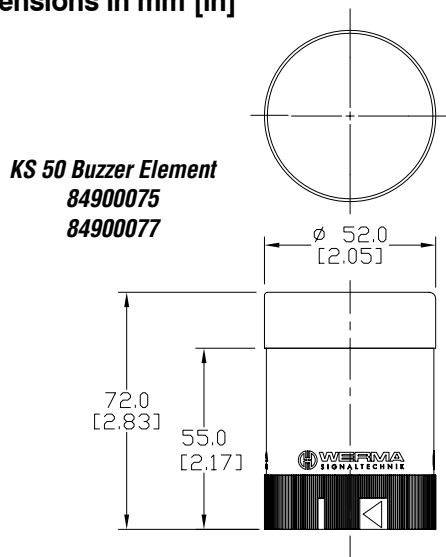
Bulbs for Incandescent Permanent Optical Element				
Part Number	Description	Wattage	Voltage	Life Duration
95584035	Bulb for Incandescent Light BA15d Bayonet Socket	5W	24VDC	up to 5,000h
95584038			230VAC	
95584057			115VAC	

KS 50 Audible and Terminal Elements

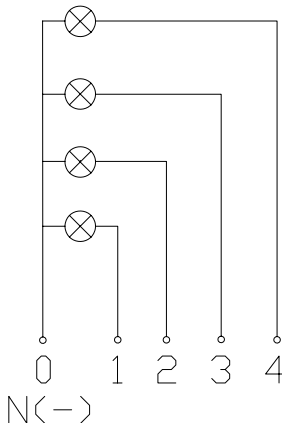
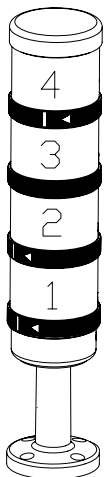
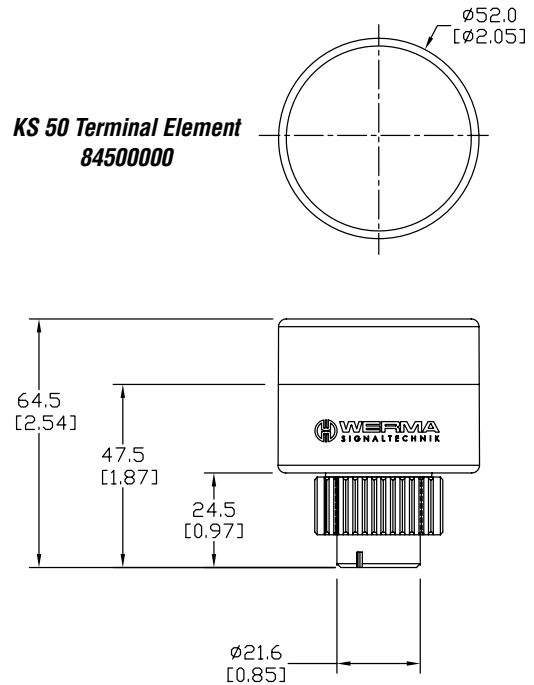
KS 50 Audible Elements Specifications		
Part Number	84900075	84900077
Voltage	24V AC/DC	115V AC/DC
Current Consumption	max. 25mA	
Tone Frequency	2.1 kHz	
Maximum Volume	80dB	
Tone Type	Continuous/Pulse Tone Selectable	
Life Duration	min. 5,000h	
Duty Cycle	100%	
Operating Temperature	-4°F to 122°F [-20°C to 50°C]	
Weight	54g [1.90 oz]	
Housing Material	PC/ABS, PC blend (cap)	
Dome Material	PC/ABS, PC blend	

KS 50 Terminal Element Specifications	
Part Number	84500000
Description	Terminal with screw connector
Mounting	Tube, bracket, base, and single hole mounting
Connection	max. 1.5 mm ² - Single Wire
Operating Temperature	-4°F to 122°F [-20°C to 50°C]
Gauge	AWG18 to AWG14
Weight	93g [3.28 oz]
Cap Material	Polycarbonate
Base Material	Polyamide + PC/ABS

Dimensions in mm [in]








KS 50 Terminal Element
84500000

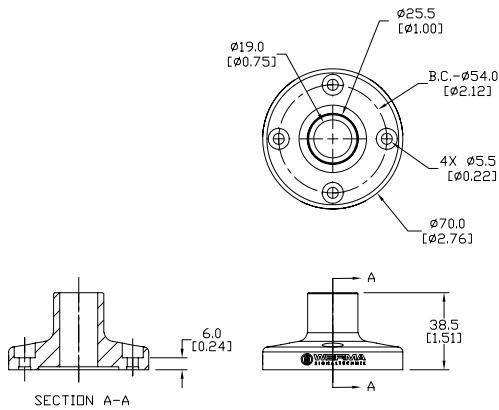


84900075 and 84900077
Switching from continuous to pulse tone.

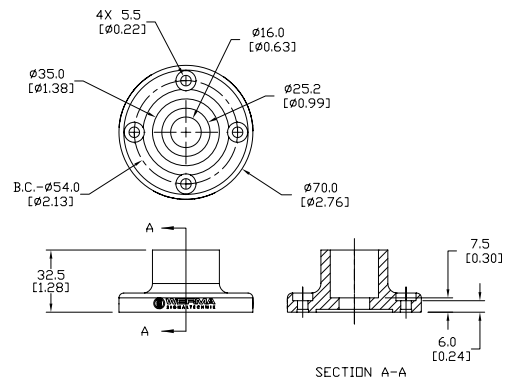
KS 50 Mounting Hardware and Accessories

KS 50 Mounting Hardware and Accessories Specifications					
Part Number	Description	Operating Temp.	Material	Weight	
	97584510	Tube, 100mm [3.94 in]	-20°C to 50°C [-4°F to 122°F]	Anodized aluminum	30g [1.06 oz]
	97584025	Tube, 250mm [9.84 in]			73g [2.57 oz]
	97584040	Tube, 400mm [15.75 in]			120g [4.23 oz]
	97584060	Tube, 600mm [23.62 in]			180g [6.35 oz]
	97584080	Tube, 800mm [31.49 in]			236g [8.32 oz]
	97584003	Tube, 1000mm [39.37 in]			296g [10.44 oz]
	97584090	Plastic base for 25mm [0.98 in] diameter tube	-20°C to 50°C [-4°F to 122°F]	Polyamide Glass Reinforced	40g [1.41 oz]
	97584091	Metal base for 25mm [0.98 in] diameter tube	-20°C to 50°C [-4°F to 122°F]	Anodized aluminum	110g [3.88 oz]
	96000030	Foldaway base for 25mm [0.98 in] diameter tube	-	Polyamide Glass Reinforced	165g [5.82 oz]
	97584501	Base for surface mounting, includes rubber seal	-20°C to 60°C [-4°F to 140°F]	Polyamide Glass Reinforced	35g [1.23 oz]

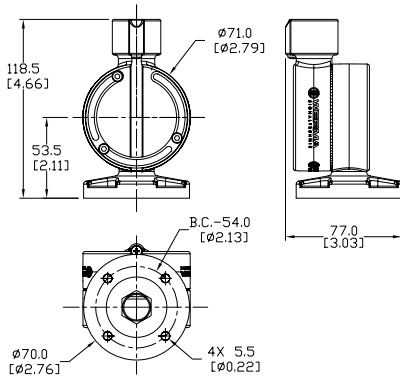
Dimensions in mm [in]



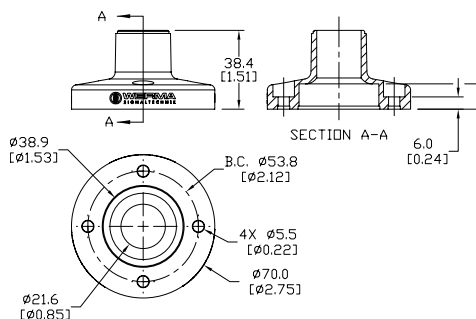
97584090



97584091








96000030

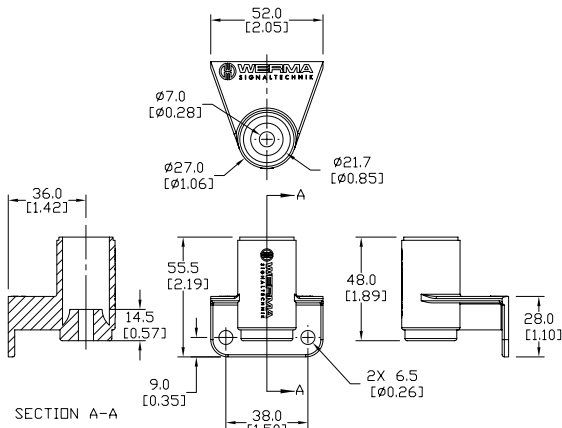


97584501

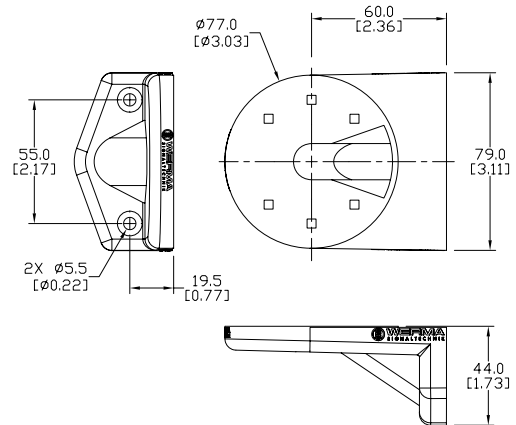
KS 50 Contact Boxes and Brackets

Brackets & Contact Boxes Technical Specifications				
Part Number	Description	Temp. Range	Material	Weight
 97584502	Bracket for wall mounting	-20°C to 60°C [-4°F to 140°F]	Polyamide	30g [1.06 oz]
 96000014	Bracket for base mounting with concealed cable entry	-20°C to 60°C [-4°F to 140°F]	Polyamide	80g [2.82 oz]
 96000001	Bracket for base mounting	-20°C to 50°C [-4°F to 122°F]	Polyamide	57g [2.01 oz]
 97584001	Contact box with side cable exit	-20°C to 60°C [-4°F to 140°F]	Polyamide	71g [2.50 oz]
 97584004	Contact box with magnetic base and side cable exit	-20°C to 60°C [-4°F to 140°F]	Polyamide	316g [11.15 oz]

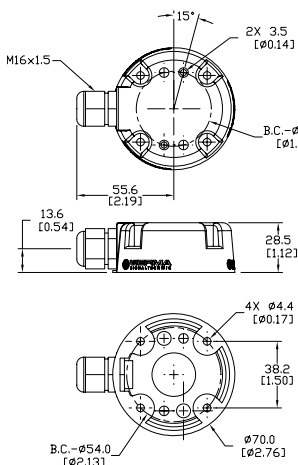
Dimensions in mm [in]



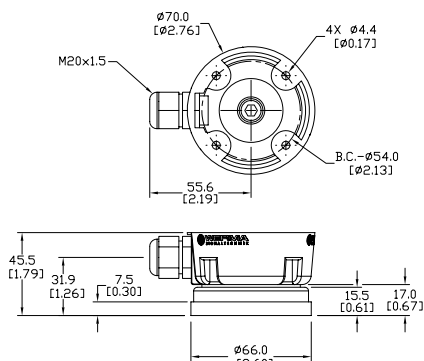
97584502



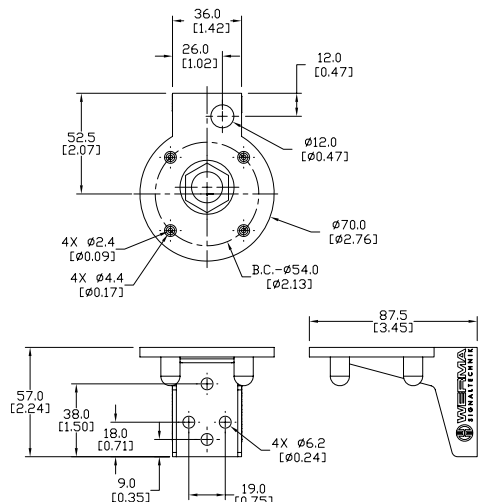
96000014



97584001



97584004



96000001

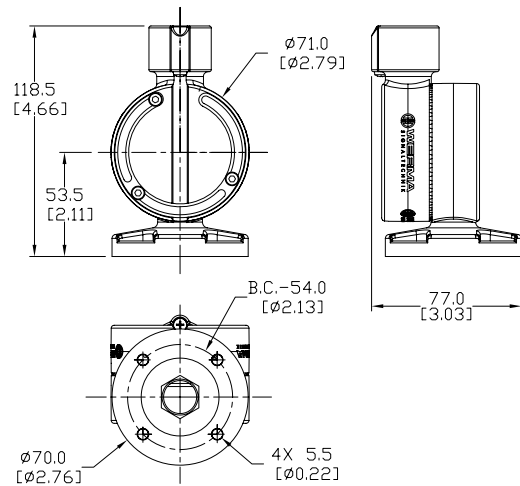
Foldaway Base for KS 71 and KS 50

- The signal tower can be folded away while still connected
- Minimizes packaging costs and optimizes machine transportation
- Simple mounting and cable entry – for up to 14 mm diameter cables
- Vertical alignment of signal towers even on sloping surfaces
- Positioning in 7.5° steps, markings for 30, 45, 60, or 90 degrees

Foldaway Base for KS 71 and KS 50		
Part Number	Technical Specifications	
96000030	Material	Polyamide Glass Fiber-Reinforced
	Cable Diameter	Max. 14mm [0.55 in]
	Assembly	Includes rubber seals
	Fixing	Vertical or horizontal positioning
	Weight	165g [5.82 oz]



Dimensions in mm [in]



Configuring Your KombiSIGN 50 Stack Light

▶ STEP 1

Select the required optical elements for your application



Optical Signal Elements

- Incandescent Permanent Light
- LED Permanent Light
- LED Blinking Light
- LED Flashing Light



Audible Signal Elements


- Buzzer Element

▶ STEP 2

Select the optional audible element for your application

▶ STEP 3

Select the terminal element for your mounting option (includes cap)



Terminal element for surface, tube, single hole and bracket mounting


Order no. **84500000**

▶ STEP 4

Select the appropriate mounting option and accessories


Base/Bracket Mounting

Tube Mounting



Bracket for wall mounting

Order no. **97584502**



Base for surface mounting, incl. rubber seal

Order no. **97584501**


Tube Ø 25mm, all anodized

100mm long	Order no. 97584510
250mm long	Order no. 97584025
400mm long	Order no. 97584040
600mm long	Order no. 97584060
800mm long	Order no. 97584080
1000mm long	Order no. 97584003

Base for Tube, plastic
Order no. **97584090**

Base for Tube, metal
Order no. **97584091**

Foldaway Base
Order no. **96000030**



▶ STEP 5

Where appropriate, select the bracket and the contact box



Contact box with side cable exit

Order no. **97584001**

Contact box with magnetic base and side cable exit

Order no. **97584004**

Bracket for base mounting with concealed cable entry

Order no. **96000014**

Bracket for base mounting

Order no. **96000001**

KS 50 Elements Quick Selection Guide

STEP 1 - Optical Elements Quick Selection Guide				
Type of Light	Part Number	Color	Operating Voltage	Price
Incandescent Permanent*	84610000	Red	12-240V AC/DC	\$21.00
	84620000	Green		\$21.00
	84630000	Yellow		\$21.00
	84640000	Clear		\$21.00
	84650000	Blue		\$21.00
Bulbs	95584035	Clear	24VDC	\$7.75
	95584038	Clear	230VAC	\$7.75
	95584057	Clear	115VAC	\$7.75
LED Permanent	84810055	Red	24V AC/DC	\$67.00
	84820055	Green		\$67.00
	84830055	Yellow		\$67.00
	84840055	Clear		\$104.00
	84850055	Blue		\$104.00
	84810067	Red	115VAC	\$79.00
	84820067	Green		\$79.00
	84830067	Yellow		\$79.00
	84840067	Clear		\$104.00
	84850067	Blue		\$115.00
LED Blinking Light	84811075	Red	24V AC/DC	\$67.00
	84821075	Green		\$67.00
	84831075	Yellow		\$67.00
	84841075	Clear		\$90.00
	84851075	Blue		\$104.00
	84811067	Red	115VAC	\$79.00
	84821067	Green		\$79.00
	84831067	Yellow		\$79.00
	84841067	Clear		\$115.00
	84851067	Blue		\$115.00
LED Flashing Light Element	84812055	Red	24VDC	\$135.00
	84822055	Green		\$157.00
	84832055	Yellow		\$135.00
	84842055	Clear		\$180.00
	84852055	Blue		\$180.00

* Note: Bulbs are required for permanent incandescent optical element



KS 50 LED Light Element

STEP 2 - Audible Elements Quick Selection Guide					
Part Number	Description	Voltage	Tone Frequency	Maximum Volume	Price
84900075	Buzzer element	24V AC/DC	2.1 kHz	80dB	\$58.00
84900077		115V AC/DC			\$61.00

STEP 3 - Terminal Element Quick Selection			
Part Number	Description	Mounting	Price
84500000	Screw terminal element for KS 50	surface tube single-hole bracket	\$28.50

STEP 4 - Mounting Options/Accessories Quick Selection		
Part Number	Description	Price
97584510	Anodized tube, 100mm [3.94 in] long	\$12.00
97584025	Anodized tube, 250mm [9.84 in] long	\$15.00
97584040	Anodized tube, 400mm [15.75 in] long	\$20.00
97584060	Anodized tube, 600mm [23.62 in] long	\$27.00
97584080	Anodized tube, 800mm [31.49 in] long	\$34.00
97584003	Anodized tube, 1000mm [39.37 in] long	\$46.50
97584090	Plastic base for 25mm [0.98 in] diameter tube	\$13.00
97584091	Metal base for 25mm [0.98 in] diameter tube	\$20.00
96000030	Foldaway base for 25mm [0.98 in] diameter tube	\$54.00
97584501	Base for surface mounting, includes rubber seal	\$14.50
97584502	Bracket for wall mounting	\$21.00

STEP 5 - Contact Boxes & Brackets Quick Selection		
Part Number	Description	Price
97584001	Contact box with side exit cable	\$18.00
97584004	Contact box with magnetic base and side exit cable	\$49.00
96000014	Bracket for base mounting with concealed cable entry	\$19.50
96000001	Bracket for base mounting	\$16.00