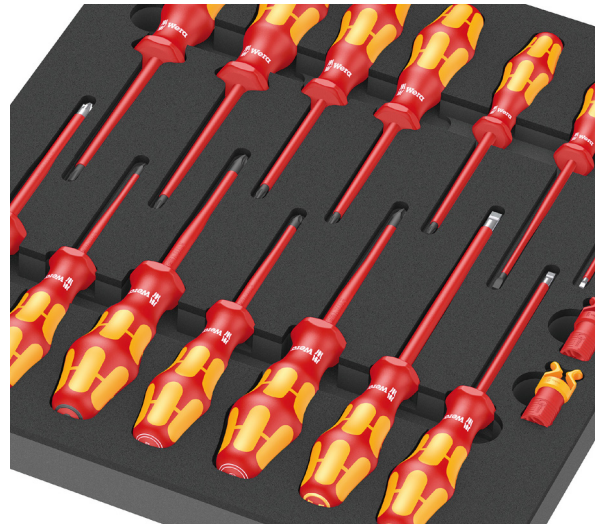




# Wera Tray Sets

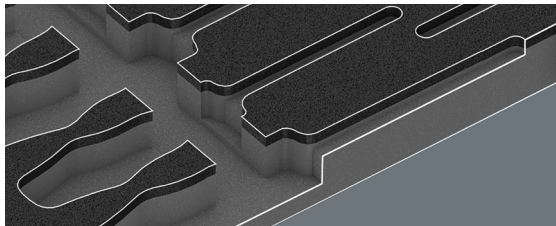
## Kraftform Plus 100 VDE Screwdriver Tray Sets

Wera Insulated Screwdriver tray sets feature VDE-certified screwdrivers with insulated blades for safe electrical work up to 1,000V. All tools are individually tested in accordance with IEC 60900 to guarantee safe working at rated voltages. Five screwdrivers feature reduced blade diameter with integrated protective insulation, allowing access to sunken screws and spring elements in confined electrical enclosures. The multi-component Kraftform handle design incorporates smooth hard zones for high-speed turning and soft grip zones for high torque transfer, while the hexagonal anti-roll feature prevents rolling away on work surfaces. Lasertip technology creates a sharp-edged surface structure that bites into the screw head, preventing slippage. Color-coded with Wera's Take it easy tool finder system for quick profile and size identification. The durable two-color foam insert provides secure tool storage with precision contour cutouts, and when a tool is removed, the contrasting underlayer becomes immediately visible for quick inventory checks.



## Features

- Tray Size: 1/2 drawer (15.4 x 13.5 x 1.8in)
- Individually tested at 10,000V for safe working in accordance with IEC 60900
- Reduced blade diameter with integrated protective insulation for sunken screws
- Lasertip technology bites into screw head to prevent slippage and cam-out
- Multi-component Kraftform handle with zones optimized for speed and torque transfer
- Two-color foam insert with high-contrast underlayer for missing tool identification
- Water- and oil-repellent foam construction for easy cleaning and long-term durability



Safe storage and quick visual overview



Two-colored foam for quick identification

Kraftform Plus 100 VDE Screwdriver Tray Sets						
Part Number	Number of Pieces	Part Image	Type	Tip Size	Set Includes	Price
<u><a href="#">05150102001</a></u>	16		Phillips	#1, #2	(14) Kraftform VDE insulated screwdrivers (Phillips: #1, #2, Pozidriv: #1, #2, Pozidriv/slotted: #2, slotted: 2.5mm, 3.5mm, 4mm, 5.5mm, torx: T10, T15, T20, T25, T30), (2) screw grippers, (1) foam insert tray	\$187.00
			Pozidriv	#1, #2		
			Pozidriv Slotted	#2		
			Torxv	T10, T15, T20, T25, T30		
			Slotted	2.5mm, 3.5mm, 4mm, 5.5mm		



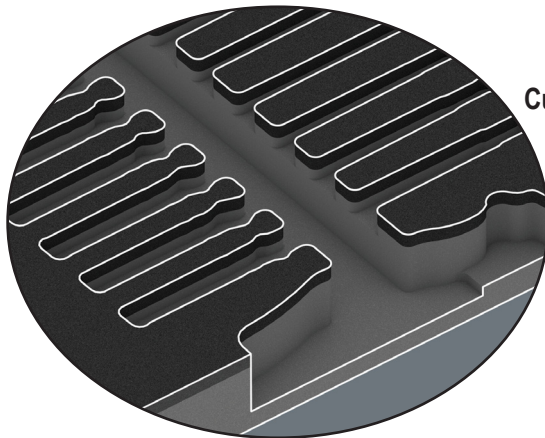
# Wera Tray Sets

## Overview

Wera modular foam tray sets provide professional-grade tool organization that maximizes efficiency and workspace optimization. Each set features durable two-color foam construction designed to fit seamlessly in most toolboxes and pull-out tool drawers. Available in multiple tool type configurations, these modular trays allow professionals to customize their storage based on specific job requirements while maintaining standardized dimensions for efficient drawer utilization. The high-quality foam construction protects tools from damage while precision contour cutouts keep each tool held securely. The innovative two-color design makes missing tools immediately visible—when a tool is removed, the contrasting underlayer becomes apparent at a glance. Water- and oil-repellent foam requires minimal maintenance. This systematic organization reduces time spent searching for tools, improves inventory management, and creates a cleaner, more professional workspace. Whether outfitting a new toolbox or upgrading existing storage, Wera foam tray sets deliver the organization and durability professionals demand.

## Features

- Two-color foam construction for instant missing tool identification
- Water- and oil-repellent for easy cleaning and durability
- Chemical vapor-free foam construction for safe tool storage
- Precision contour cutouts secure tools and prevent movement
- Optimized cutout design for easy tool removal
- Modular system fits most toolboxes and pull-out tool drawers
- Multiple tool type configurations available
- Soft foam protects tools from scratches, dirt, and impact
- Space-saving design maximizes drawer capacity
- Professional tool organization improves inventory management
- Multiple size configurations available:
  - 1/4 long drawer (15.4 x 6.8 x 1.4in)
  - 1/2 drawer (15.4 x 13.5 x 1.9in)



Custom-Fit Compartments

Safe Storage and Quick Overview



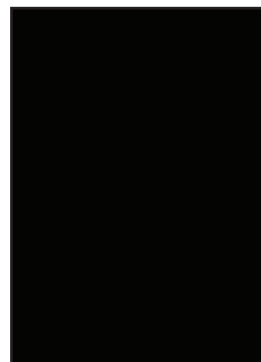
Two-Colored Foam for Quick Identification

1/4 long drawer



15.4 x 6.8 x 1.4in

1/2 drawer



15.4 x 13.5 x 1.9in