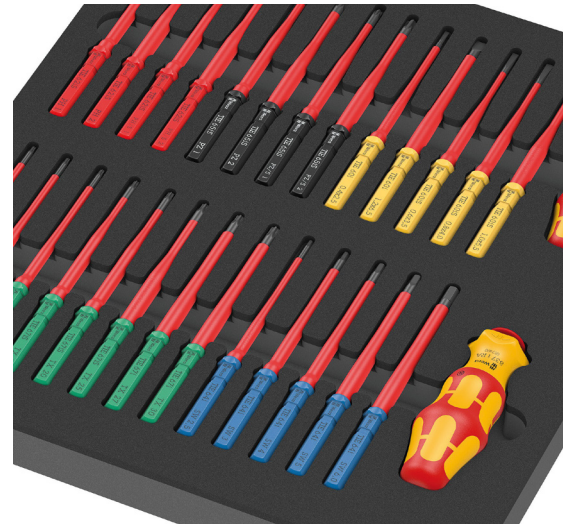




# Wera Tray Sets

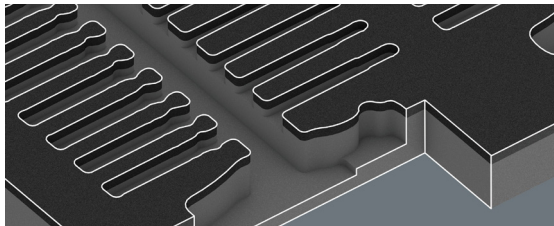
## Kraftform Kompakt VDE Screwdriver Tray Sets

Wera Insulated Screwdriver tray sets feature VDE-certified interchangeable blade systems for safe electrical work up to 1000V. All tools are individually tested in accordance with IEC 60900 to guarantee safe working at rated voltages. The 837 i RA VDE handle incorporates integrated ratchet functionality with fine 40-tooth mechanism and 9° return angle, enabling fast screwdriving without repositioning the tool. The 817 VDE handle provides standard operation with multi-component Kraftform design for high working speeds and ergonomic screwdriving. Interchangeable blades feature 157mm length with practical spinning function, anti-roll protection, and reduced blade diameter. Color-coded with Wera's Take-it-easy tool finder system and laser-engraved size indication for quick identification. The durable two-color foam insert provides secure tool storage with precision contour cutouts, and when a tool is removed, the contrasting underlayer becomes immediately visible for quick inventory checks.

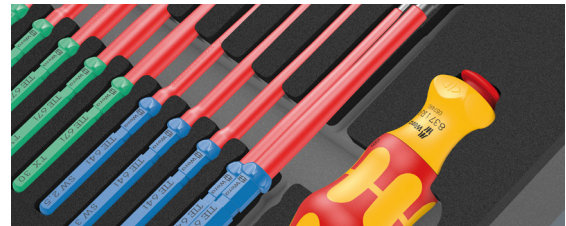


### Features

- Tray Size: 1/2 drawer (15.4 x 13.5 x 1.8in)
- Individually tested for safe working up to 1,000V in accordance with IEC 60900
- Ratcheting handle features 40-tooth mechanism with 9° return angle for fast operation
- Interchangeable blades with reduced diameter and integrated protective insulation (iS)
- Take-it-easy tool finder color coding with laser-engraved size indication
- Two-color foam insert with high-contrast underlayer for instant tool identification
- Water- and oil-repellent foam construction for easy cleaning and long-term durability



Safe storage and quick visual overview



Two-colored foam for quick identification

Kraftform Kompakt VDE Screwdriver Tray Sets						
Part Number	Number of Pieces	Part Image	Type	Tip Size	Set Includes	Price
05150151001	28		⊕ Phillips	#1, #2	(1) Kraftform Kompakt VDE ratcheting handle, (1) Kraftform Kompakt VDE handle, (26) Kraftform Kompakt VDE interchangeable blades (Phillips: #1, #2, Pozidriv: #1, #2, PlusMinus: #1, #2, Pozidriv/slotted: #1, #2, torx: T8, T9, T10, T15, T20, T25, T27, T30, external hex: 2.5mm, 3mm, 4mm, 5mm, 6mm, slotted: 2.5mm, 3.5mm, 4mm, 5.5mm, 6.5mm), (1) foam insert tray	\$328.00
			⊕ Pozidriv	#1, #2		
			⊕ PlusMinus	#1, #2		
			⊕ Pozidriv slotted	#1, #2		
			⊕ Torxv	T8, T9, T10, T15, T20, T25, T27, T30		
			⊕ External hex	2.5mm, 3mm, 4mm, 5mm, 6mm		
			⊕ Slotted	2.5mm, 3.5mm, 4mm, 5.5mm, 6.5mm		



# Wera Tray Sets

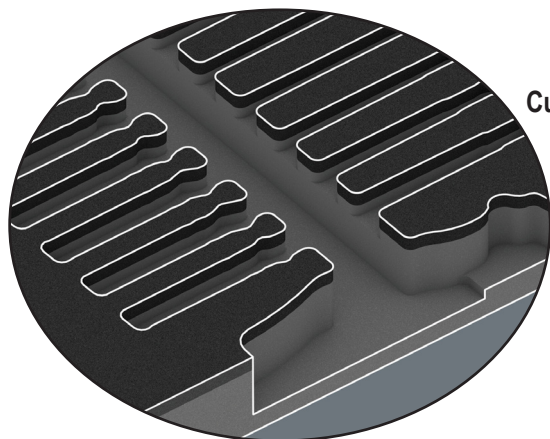
## Overview

Wera modular foam tray sets provide professional-grade tool organization that maximizes efficiency and workspace optimization. Each set features durable two-color foam construction designed to fit seamlessly in most toolboxes and pull-out tool drawers. Available in multiple tool type configurations, these modular trays allow professionals to customize their storage based on specific job requirements while maintaining standardized dimensions for efficient drawer utilization.

The high-quality foam construction protects tools from damage while precision contour cutouts keep each tool held securely. The innovative two-color design makes missing tools immediately visible—when a tool is removed, the contrasting underlayer becomes apparent at a glance. Water- and oil-repellent foam requires minimal maintenance. This systematic organization reduces time spent searching for tools, improves inventory management, and creates a cleaner, more professional workspace. Whether outfitting a new toolbox or upgrading existing storage, Wera foam tray sets deliver the organization and durability professionals demand.

## Features

- Two-color foam construction for instant missing tool identification
- Water- and oil-repellent for easy cleaning and durability
- Chemical vapor-free foam construction for safe tool storage
- Precision contour cutouts secure tools and prevent movement
- Optimized cutout design for easy tool removal
- Modular system fits most toolboxes and pull-out tool drawers
- Multiple tool type configurations available
- Soft foam protects tools from scratches, dirt, and impact
- Space-saving design maximizes drawer capacity
- Professional tool organization improves inventory management
- Multiple size configurations available:
  - 1/4 long drawer (15.4 x 6.8 x 1.4in)
  - 1/2 drawer (15.4 x 13.5 x 1.9in)



Custom-Fit Compartments

Safe Storage and Quick Overview



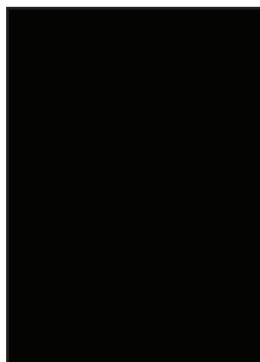
Two-Colored Foam for Quick Identification

1/4 long drawer



15.4 x 6.8 x 1.4in

1/2 drawer



15.4 x 13.5 x 1.9in