



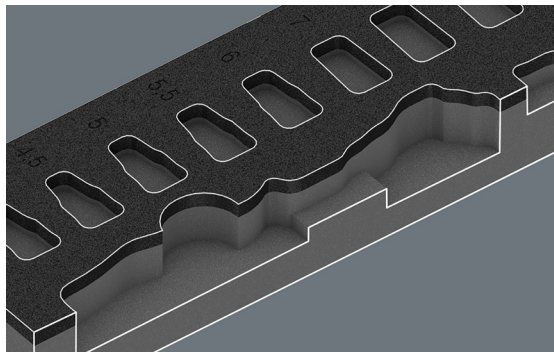
Wera Tray Sets

Ratchet, Driver Bit and Socket Tray Sets

Wera Socket and Ratchet tray sets combine precision engineering with innovative ratcheting technology for reliable performance across diverse applications. The Zyklop Speed ratchet features a fine 72-tooth mechanism allowing a 5° return angle, ideal for tight spaces and precision work. The unique gyrating mass design with slip-proof fast-rotating sleeve accelerates screwdriving speeds, while the freely pivoting ratchet head locks at 0°, 15°, and 90° positions for enhanced hand clearance in confined areas. Sets include comprehensive socket coverage in multiple drive sizes with chrome-plated finish for corrosion protection. The durable two-color foam insert provides secure tool storage with precision contour cutouts, and when a tool is removed, the contrasting underlayer becomes immediately visible for quick inventory checks.

Features

- Tray size: 1/4 long drawer (15.4 x 6.8 x 1.4in)
- Fine 72-tooth ratchet mechanism allows 5° return angle for work in confined spaces
- Gyrating mass design with fast-rotating sleeve for accelerated screwdriving speeds
- Pivoting ratchet head locks at predefined positions (0°, 15°, 90°) for accessibility
- Thumbwheel allows quick direction change at any position
- Two-color foam insert with high-contrast underlayer for missing tool identification
- Water- and oil-repellent foam construction for easy cleaning and long-term durability



Safe storage and quick visual overview



Two-colored foam for quick identification

Socket and Driver Bit Tray Sets

Part Number	Number of Pieces	Part Image	Return Angle	Measurement Type	Set Includes	Price
05150110001	37		5 degrees	Imperial Metric	(1) 1/4in Zyklop Speed ratchet, (2) 1/4in extension with free-turning sleeve (75mm, 150mm), (1) 1/4in Zyklop universal joint, (1) 1/4in 56mm wobble extension, (14) 1/4in x 1in standard sockets (4, 4.5, 5, 5.5, 6, 7, 8, 9, 10, 11, 12, 13, 14, 15mm), (5) 1/4in x 1in external hex socket bits with holding function (3, 4, 5, 6, 8mm), (4) 1/4in x 4in external hex socket bits with holding function (4, 5, 6, 8mm), (9) 1/4 x 1in Torx socket bits with holding function (T8, T9, T10, T15, T20, T25, T27, T30, T40), (1) foam tray	\$468.00



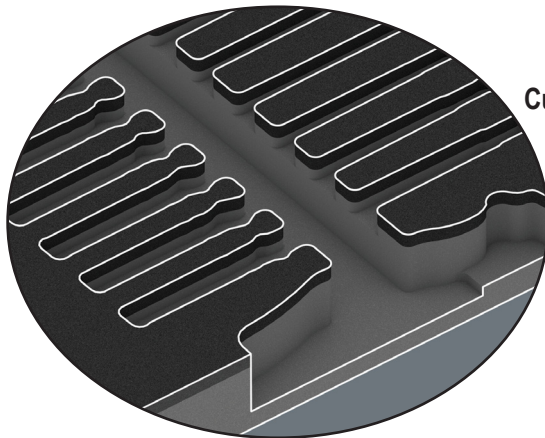
Wera Tray Sets

Overview

Wera modular foam tray sets provide professional-grade tool organization that maximizes efficiency and workspace optimization. Each set features durable two-color foam construction designed to fit seamlessly in most toolboxes and pull-out tool drawers. Available in multiple tool type configurations, these modular trays allow professionals to customize their storage based on specific job requirements while maintaining standardized dimensions for efficient drawer utilization. The high-quality foam construction protects tools from damage while precision contour cutouts keep each tool held securely. The innovative two-color design makes missing tools immediately visible—when a tool is removed, the contrasting underlayer becomes apparent at a glance. Water- and oil-repellent foam requires minimal maintenance. This systematic organization reduces time spent searching for tools, improves inventory management, and creates a cleaner, more professional workspace. Whether outfitting a new toolbox or upgrading existing storage, Wera foam tray sets deliver the organization and durability professionals demand.

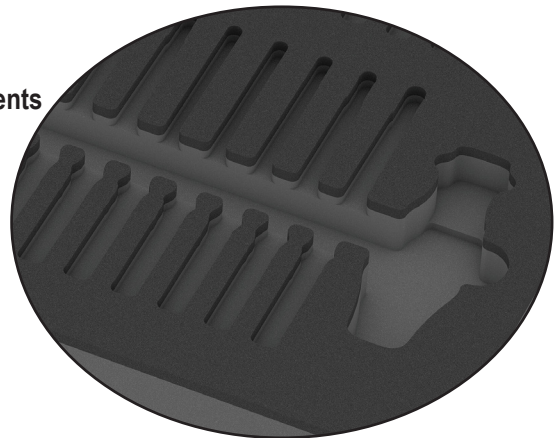
Features

- Two-color foam construction for instant missing tool identification
- Water- and oil-repellent for easy cleaning and durability
- Chemical vapor-free foam construction for safe tool storage
- Precision contour cutouts secure tools and prevent movement
- Optimized cutout design for easy tool removal
- Modular system fits most toolboxes and pull-out tool drawers
- Multiple tool type configurations available
- Soft foam protects tools from scratches, dirt, and impact
- Space-saving design maximizes drawer capacity
- Professional tool organization improves inventory management
- Multiple size configurations available:
 - 1/4 long drawer (15.4 x 6.8 x 1.4in)
 - 1/2 drawer (15.4 x 13.5 x 1.9in)



Custom-Fit Compartments

Safe Storage and Quick Overview



Two-Colored Foam for Quick Identification

1/4 long drawer



15.4 x 6.8 x 1.4in

1/2 drawer



15.4 x 13.5 x 1.9in