



Wera Tray Sets

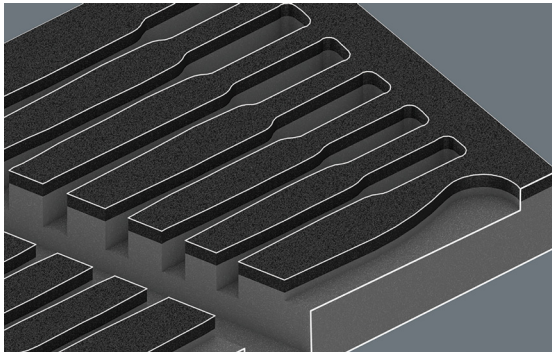
Combination Wrench Tray Sets

Wera Combination Wrench tray sets feature innovative ring ratchet design with integrated holding function that securely grips nuts and bolts in the open-end jaw for easy positioning and threading. The metal plate with serrated teeth in the open end literally bites into the fastener, preventing slippage even at higher torque, while the integrated limit-stop prevents the wrench from slipping off the fastener head—eliminating the need to use your thumb as a depth stop. The double-hex geometry in the box-end delivers a positive connection that reduces the risk of side slipping, and the ratchet mechanism allows a return angle of only 30° for efficient work in confined spaces. Color-coded with Wera's Take it easy tool finder system for quick size identification. The durable two-color foam insert provides secure tool storage with precision contour cutouts, and when a tool is removed, the contrasting underlayer becomes immediately visible for quick inventory checks.

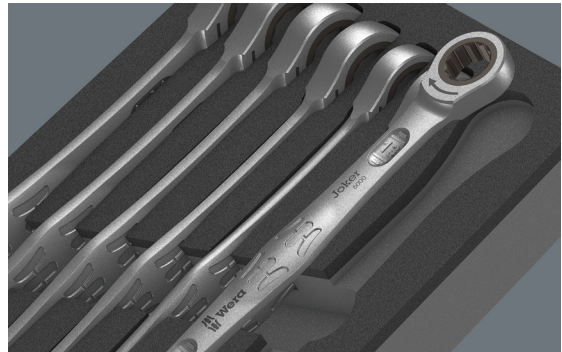


Features


- Tray size: 1/4 long drawer (15.4 x 6.8 x 1.4in)
- Holding function with metal plate grips fasteners in open-end jaw for easy positioning
- Integrated limit-stop prevents slipping for safer, more forceful applications
- Double-hex geometry with serrated teeth prevents side slipping even at higher torque
- Ring ratchet mechanism with 30° return angle for efficient work in tight spaces
- Two-color foam insert with high-contrast underlayer for missing tool identification
- Water- and oil-repellent foam construction for easy cleaning and long-term durability



Safe storage and quick visual overview



Two-colored foam for quick identification

Combination Wrench Tray Sets					
Part Number	Number of Pieces	Part Image	Tray Size	Set Includes	Price
05150120001	11		1/4 drawer (15.4 x 6.8 x 1.4in)	(11) Joker ratcheting combination wrenches (8mm, 10mm, 11mm, 12mm, 13mm, 14mm, 15mm, 16mm, 17mm, 18mm, 19mm), (1) foam insert tray	\$502.00



Wera Tray Sets

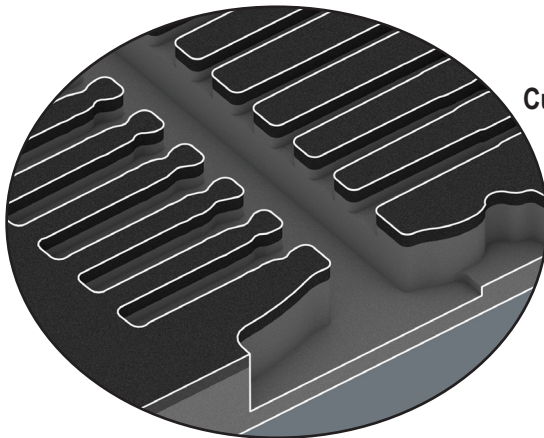
Overview

Wera modular foam tray sets provide professional-grade tool organization that maximizes efficiency and workspace optimization. Each set features durable two-color foam construction designed to fit seamlessly in most toolboxes and pull-out tool drawers. Available in multiple tool type configurations, these modular trays allow professionals to customize their storage based on specific job requirements while maintaining standardized dimensions for efficient drawer utilization.

The high-quality foam construction protects tools from damage while precision contour cutouts keep each tool held securely. The innovative two-color design makes missing tools immediately visible—when a tool is removed, the contrasting underlayer becomes apparent at a glance. Water- and oil-repellent foam requires minimal maintenance. This systematic organization reduces time spent searching for tools, improves inventory management, and creates a cleaner, more professional workspace. Whether outfitting a new toolbox or upgrading existing storage, Wera foam tray sets deliver the organization and durability professionals demand.

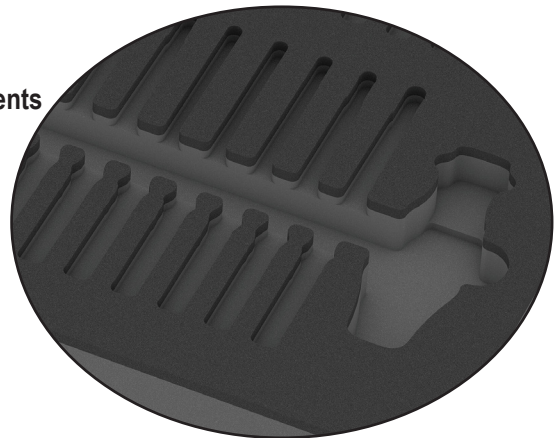
Features

- Two-color foam construction for instant missing tool identification
- Water- and oil-repellent for easy cleaning and durability
- Chemical vapor-free foam construction for safe tool storage
- Precision contour cutouts secure tools and prevent movement
- Optimized cutout design for easy tool removal
- Modular system fits most toolboxes and pull-out tool drawers
- Multiple tool type configurations available
- Soft foam protects tools from scratches, dirt, and impact
- Space-saving design maximizes drawer capacity
- Professional tool organization improves inventory management
- Multiple size configurations available:
 - 1/4 long drawer (15.4 x 6.8 x 1.4in)
 - 1/2 drawer (15.4 x 13.5 x 1.9in)



Custom-Fit Compartments

Safe Storage and Quick Overview



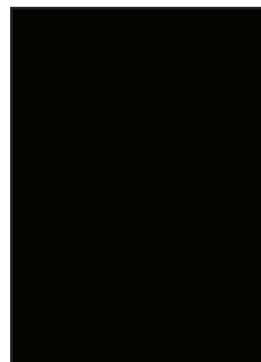
Two-Colored Foam for Quick Identification

1/4 long drawer



15.4 x 6.8 x 1.4in

1/2 drawer



15.4 x 13.5 x 1.9in