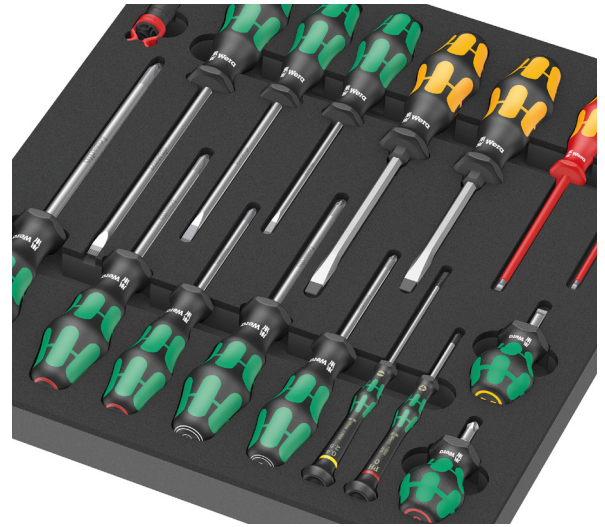




Wera Tray Sets

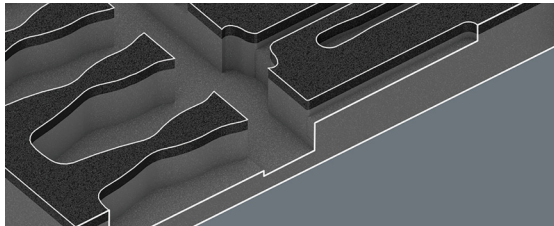
Assorted Screwdriver Tray Sets

Wera Screwdriver tray sets provide comprehensive screwdriving solutions with specialized tools for diverse applications. The set includes chiseldrivers featuring pound-thru hexagon blades and integrated impact caps for fastening, chiseling, and loosening seized screws—with an integrated hexagon bolster for applying additional torque using an open-jaw or ring spanner. Kraftform Plus screwdrivers feature hard zones for high working speeds and soft grip zones for high torque transfer, while Kraftform Plus VDE models are individually tested for safe working up to 1,000V. Kraftform Micro screwdrivers incorporate rotating caps for fast turning in precision applications, and Stubby screwdrivers provide short-blade access for hard-to-reach areas. Lasertip technology creates a sharp-edged surface structure that bites into the screw head, preventing slippage. The durable two-color foam insert provides secure tool storage with precision contour cutouts, and when a tool is removed, the contrasting underlayer becomes immediately visible for quick inventory checks.

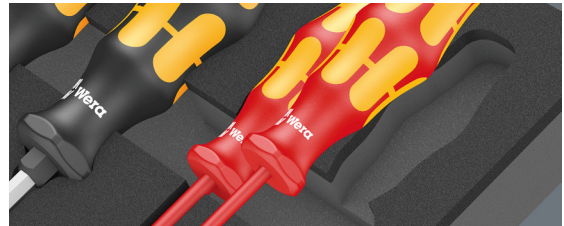


Features

- Tray size: 1/2 drawer (15.4 x 13.5 x 1.9in)
- Chiseldrivers with pound-thru hexagon blade and impact cap for
- Kraftform Plus screwdrivers with hard and soft zones for speed and torque transfer
- VDE-insulated screwdrivers individually tested for safe working up to 1,000V
- Kraftform Micro and Stubby screwdrivers for precision work and confined spaces
- Two-color foam insert with high-contrast underlayer for missing tool identification
- Water- and oil-repellent foam construction for easy cleaning and long-term durability



Safe storage and quick visual overview



Two-colored foam for quick identification

Assorted Screwdriver Tray Sets

Part Number	Number of Pieces	Part Image	Type	Tip Size	Set Includes	Price
05150101001	18		Slotted	2.5mm, 3.5mm	(2) heavy duty screwdrivers (slotted: 5.5mm, 7mm), (8) Kraftform Plus screwdrivers (Phillips: #1, #2, #3, Pozidriv: #1, #2, slotted: 4mm, 5.5mm, 6.5mm), (2) Kraftform Plus VDE insulated screwdrivers (slotted: 2.5mm, 3.5mm), (2) Kraftform Micro screwdrivers (Phillips: #0, slotted: 2.5mm), (2) Stubby screwdrivers (Phillips: #2, slotted: 5.5mm), (2) screw grippers, (1) foam insert tray	\$213.00
			Slotted	5.5mm, 7mm		
			Phillips	#1, #2, #3		
			Slotted	4mm, 5.5mm, 6.5mm		
			Pozidriv	#1, #2		
			Phillips	#0		
			Slotted	2.5mm		
			Phillips	#2		
			Slotted	5.5mm		



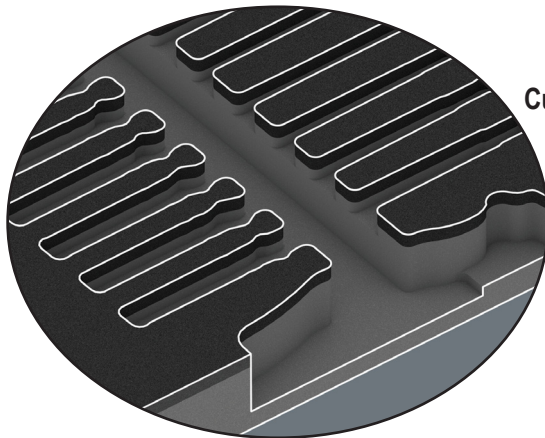
Wera Tray Sets

Overview

Wera modular foam tray sets provide professional-grade tool organization that maximizes efficiency and workspace optimization. Each set features durable two-color foam construction designed to fit seamlessly in most toolboxes and pull-out tool drawers. Available in multiple tool type configurations, these modular trays allow professionals to customize their storage based on specific job requirements while maintaining standardized dimensions for efficient drawer utilization. The high-quality foam construction protects tools from damage while precision contour cutouts keep each tool held securely. The innovative two-color design makes missing tools immediately visible—when a tool is removed, the contrasting underlayer becomes apparent at a glance. Water- and oil-repellent foam requires minimal maintenance. This systematic organization reduces time spent searching for tools, improves inventory management, and creates a cleaner, more professional workspace. Whether outfitting a new toolbox or upgrading existing storage, Wera foam tray sets deliver the organization and durability professionals demand.

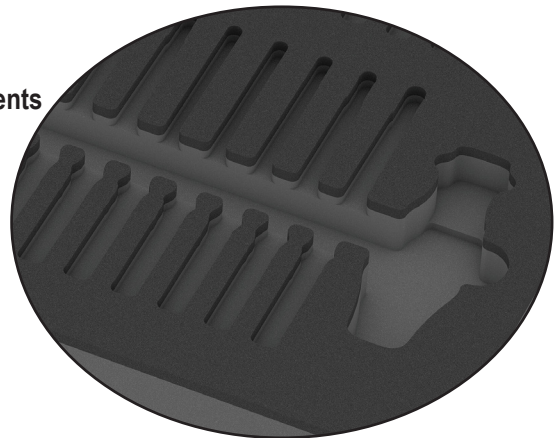
Features

- Two-color foam construction for instant missing tool identification
- Water- and oil-repellent for easy cleaning and durability
- Chemical vapor-free foam construction for safe tool storage
- Precision contour cutouts secure tools and prevent movement
- Optimized cutout design for easy tool removal
- Modular system fits most toolboxes and pull-out tool drawers
- Multiple tool type configurations available
- Soft foam protects tools from scratches, dirt, and impact
- Space-saving design maximizes drawer capacity
- Professional tool organization improves inventory management
- Multiple size configurations available:
 - 1/4 long drawer (15.4 x 6.8 x 1.4in)
 - 1/2 drawer (15.4 x 13.5 x 1.9in)



Custom-Fit Compartments

Safe Storage and Quick Overview



Two-Colored Foam for Quick Identification

1/4 long drawer



15.4 x 6.8 x 1.4in

1/2 drawer



15.4 x 13.5 x 1.9in