



Wera Tray Sets

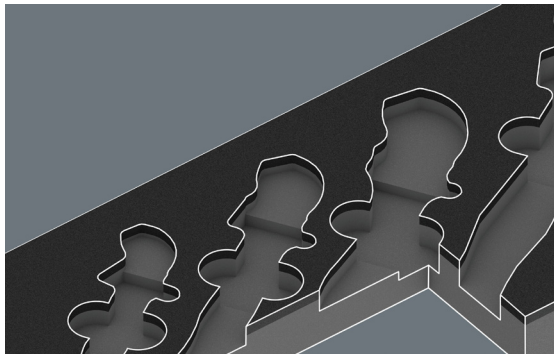
Adjustable Wrench Tray Sets

Wera Adjustable Wrench tray sets feature innovative self-adjusting technology that automatically and continuously grips hexagonal fasteners, eliminating manual jaw adjustment. The integrated lever mechanism securely clamps the fastener between the parallel jaws upon gripping, preventing slippage and damage during use. The mechanical ratchet functionality enables fast and consistent operation without removing the wrench, with a return angle of only 30° when using the corner-width rectangular prisms in the jaw—ideal for confined spaces. Available in standard and VDE-insulated configurations, with VDE models individually tested at 10,000V for safe working up to 1,000V, featuring anti-slip protection and a sliding function for contactless, safe opening of non-insulated jaws. The durable two-color foam insert provides secure tool storage with precision contour cutouts, and when a tool is removed, the contrasting underlayer becomes immediately visible for quick inventory checks.



Features

- Tray size: 1/4 long drawer (15.4 x 6.8 x 1.4in)
- Automatically and continuously grips hex fasteners without manual jaw adjustment
- Lever mechanism with parallel jaws prevents slipping and fastener damage during use
- Mechanical ratchet functionality with 30° return angle for fast operation in tight spaces
- VDE-insulated individually tested for safe working up to 1000V with anti-slip protection
- Two-color foam insert with high-contrast underlayer for missing tool identification
- Water- and oil-repellent foam construction for easy cleaning and long-term durability



Safe storage and quick visual overview



Two-colored foam for quick identification

Adjustable Wrench Tray Sets							
Part Number	Number of Pieces	Part Image	Insulated	Ratcheting	Tray Size	Set Includes	Price
05150122001	5		No	Yes	1/4 drawer (15.4 x 6.8 x 1.4in)	(5) Joker adjustable wrenches (1/4-3/8in capacity, 7/16-1/2in capacity, 1/2-5/8in capacity, 11/16-3/4in capacity, 3/4-15/16in capacity), (1) foam insert tray	\$383.00
05150124001	4		Yes	Yes	1/4 drawer (15.4 x 6.8 x 1.6in)	(4) Joker VDE adjustable wrenches (1/4-3/8in capacity, 7/16-1/2in capacity, 1/2-5/8in capacity, 11/16-3/4in capacity), (1) foam insert tray	\$355.00



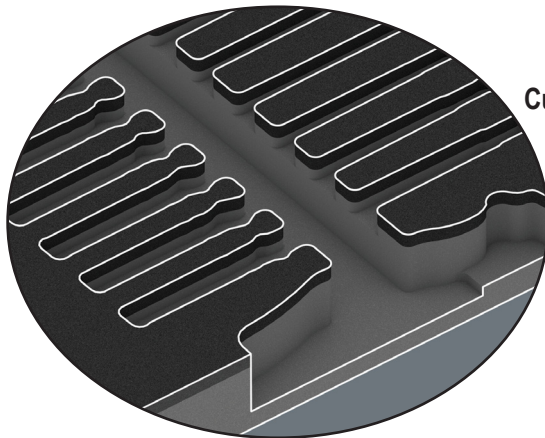
Wera Tray Sets

Overview

Wera modular foam tray sets provide professional-grade tool organization that maximizes efficiency and workspace optimization. Each set features durable two-color foam construction designed to fit seamlessly in most toolboxes and pull-out tool drawers. Available in multiple tool type configurations, these modular trays allow professionals to customize their storage based on specific job requirements while maintaining standardized dimensions for efficient drawer utilization. The high-quality foam construction protects tools from damage while precision contour cutouts keep each tool held securely. The innovative two-color design makes missing tools immediately visible—when a tool is removed, the contrasting underlayer becomes apparent at a glance. Water- and oil-repellent foam requires minimal maintenance. This systematic organization reduces time spent searching for tools, improves inventory management, and creates a cleaner, more professional workspace. Whether outfitting a new toolbox or upgrading existing storage, Wera foam tray sets deliver the organization and durability professionals demand.

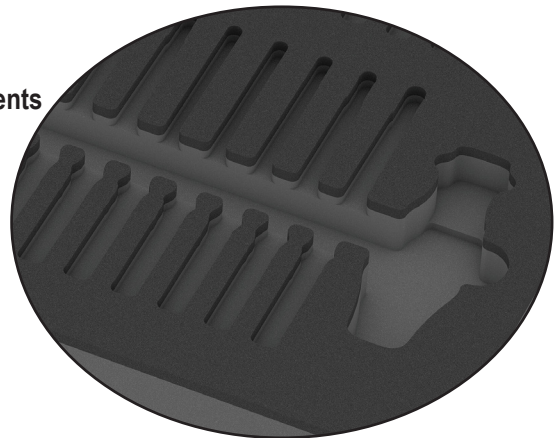
Features

- Two-color foam construction for instant missing tool identification
- Water- and oil-repellent for easy cleaning and durability
- Chemical vapor-free foam construction for safe tool storage
- Precision contour cutouts secure tools and prevent movement
- Optimized cutout design for easy tool removal
- Modular system fits most toolboxes and pull-out tool drawers
- Multiple tool type configurations available
- Soft foam protects tools from scratches, dirt, and impact
- Space-saving design maximizes drawer capacity
- Professional tool organization improves inventory management
- Multiple size configurations available:
 - 1/4 long drawer (15.4 x 6.8 x 1.4in)
 - 1/2 drawer (15.4 x 13.5 x 1.9in)



Custom-Fit Compartments

Safe Storage and Quick Overview



Two-Colored Foam for Quick Identification

1/4 long drawer



15.4 x 6.8 x 1.4in

1/2 drawer



15.4 x 13.5 x 1.9in