

Accessories - Wachendorff Encoders

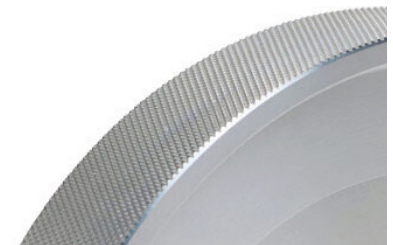
Accessories for Wachendorff Series Encoders		
AutomationDirect Part Number	Price	Description
<a href="#"><u>MR200KG10</u></a>	\$73.00	Wachendorff Automation encoder measuring wheel, 63.7mm diameter (200mm circumference), 10mm shaft, aluminum and plastic, grooved Hytrel contact surface. For use with Wachendorff Automation WDGI 36J and WDG 58V and JTEKT TRD-GK series encoders.
<a href="#"><u>MR200KH10</u></a>	\$73.00	Wachendorff Automation encoder measuring wheel, 63.7mm diameter (200mm circumference), 10mm shaft, aluminum and plastic, smooth Hytrel contact surface. For use with Wachendorff Automation WDGI 36J and WDG 58V and JTEKT TRD-GK series encoders.
<a href="#"><u>MR200NG10</u></a>	\$89.00	Wachendorff Automation encoder measuring wheel, 63.7mm diameter (200mm circumference), 10mm shaft, aluminum, pimped rubber contact surface. For use with Wachendorff Automation WDGI 36J and WDG 58V and JTEKT TRD-GK series encoders.
<a href="#"><u>MR200KR10</u></a>	\$76.00	Wachendorff Automation encoder measuring wheel, 63.7mm diameter (200mm circumference), 10mm shaft, aluminum, knurled metal contact surface. For use with Wachendorff Automation WDGI 36J and WDG 58V and JTEKT TRD-GK series encoders.
<a href="#"><u>MR500KH10</u></a>	\$120.00	Wachendorff Automation encoder measuring wheel, 159.2mm diameter (500mm circumference), 10mm shaft, aluminum and plastic, smooth Hytrel contact surface. For use with Wachendorff Automation WDGI 36J and WDG 58V and JTEKT TRD-GK series encoders.
<a href="#"><u>MR500KG10</u></a>	\$120.00	Wachendorff Automation encoder measuring wheel, 159.2mm diameter (500mm circumference), 10mm shaft, aluminum and plastic, grooved Hytrel contact surface. For use with Wachendorff Automation WDGI 36J and WDG 58V and JTEKT TRD-GK series encoders.
<a href="#"><u>MR500NG10</u></a>	\$146.00	Wachendorff Automation encoder measuring wheel, 159.2mm diameter (500mm circumference), 10mm shaft, aluminum, pimped rubber contact surface. For use with Wachendorff Automation WDGI 36J and WDG 58V and JTEKT TRD-GK series encoders.
<a href="#"><u>MR500KR10</u></a>	\$131.00	Wachendorff Automation encoder measuring wheel, 159.2mm diameter (500mm circumference), 10mm shaft, aluminum, knurled metal contact surface. For use with Wachendorff Automation WDGI 36J and WDG 58V and JTEKT TRD-GK series encoders.
<a href="#"><u>MR500KV10</u></a>	\$146.00	Wachendorff Automation encoder measuring wheel, 159.2mm diameter (500mm circumference), 10mm shaft, aluminum, smooth vulcanized rubber contact surface. For use with Wachendorff Automation WDGI 36J and WDG 58V and JTEKT TRD-GK series encoders.



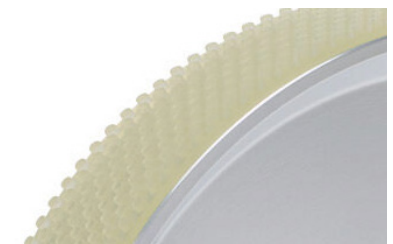
Grooved Hytrel



Smooth Hytrel



Knurled Metal



Pimped Rubber



Smooth Vulcanized Rubber



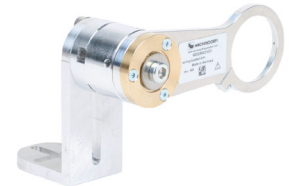
[MR200KG10](#)



[MR500KH10](#)

Accessories - Wachendorff Encoders, *continued*

Accessories for Wachendorff Series Encoders		
AutomationDirect Part Number	Price	Description
<a href="#"><u>WDGMA31031</u></a>	\$191.00	Wachendorff Automation spring-loaded counter-clockwise arm, aluminum. For use with Wachendorff Automation WDG 36J series encoders. Mounting bracket included.
<a href="#"><u>WDGMA31032</u></a>	\$191.00	Wachendorff Automation spring-loaded clockwise arm, aluminum. For use with Wachendorff Automation WDG 36J series encoders. Mounting bracket included.
<a href="#"><u>WDGMA51051</u></a>	\$244.00	Wachendorff Automation spring-loaded counter-clockwise arm, aluminum. For use with Wachendorff Automation WDG 58V series encoders. Mounting bracket included.
<a href="#"><u>WDGMA51052</u></a>	\$244.00	Wachendorff Automation spring-loaded clockwise arm, aluminum. For use with Wachendorff Automation WDG 58V series encoders. Mounting bracket included.
<a href="#"><u>DSK290606</u></a>	\$33.00	Wachendorff Automation encoder coupling, double loop, 6mm bore, galvanized steel and polyurethane body, setscrew. For use with JTEKT TRD-SR series encoders.
<a href="#"><u>DSK291010</u></a>	\$33.00	Wachendorff Automation encoder coupling, double loop, 10mm bore, galvanized steel and polyurethane body, setscrew. For use with Wachendorff Automation WDG 36J and WDG 58V and JTEKT TRD-GK series encoders.
<a href="#"><u>DSK481010</u></a>	\$63.00	Wachendorff Automation encoder coupling, double loop, 10mm bore, galvanized steel and polyurethane body, setscrew. For use with Wachendorff Automation WDG 36J and WDG 58V and JTEKT TRD-GK series encoders.



[WDGMA31031](#)



[WDGMA31032](#)



Spring-loaded clockwise:  
[WDGMA31032](#)

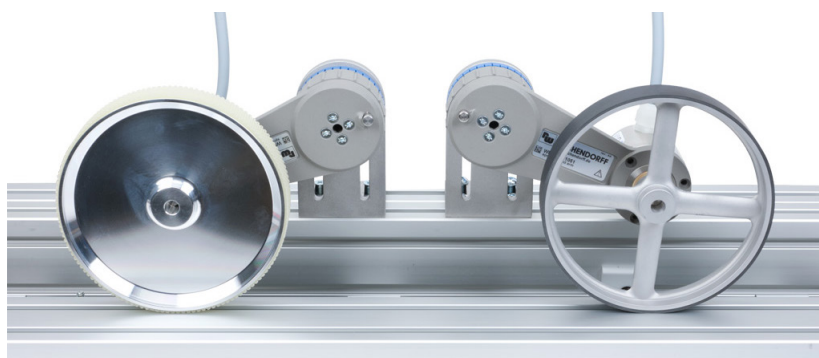
Spring-loaded counter clockwise:  
[WDGMA31031](#)



[WDGMA51051](#)



[WDGMA51052](#)



Spring-loaded clockwise:  
[WDGMA51052](#)

Spring-loaded counter clockwise:  
[WDGMA51051](#)

## Accessories - Wachendorff Encoders, *continued*

Accessories for Wachendorff Series Encoders		
AutomationDirect Part Number	Price	Description
<a href="#"><u>FB29B0606</u></a>	\$58.00	Wachendorff Automation encoder coupling, bellows, 6mm bore, stainless steel and aluminum body, setscrew. For use with JTEKT TRD-SR series encoders.
<a href="#"><u>FB29B1010</u></a>	\$58.00	Wachendorff Automation encoder coupling, bellows, 10mm bore, stainless steel and aluminum body, setscrew. For use with Wachendorff Automation WDG1 36J and WDG 58V and JTEKT TRD-GK series encoders.
<a href="#"><u>WDGDH10000</u></a>	\$196.00	Wachendorff Automation spring-loaded encoder mount, aluminum. For use with Wachendorff Automation WDG 58V series encoders.
<a href="#"><u>WDGQF58B04</u></a>	\$17.00	Wachendorff Automation square mounting flange, 65-75mm adjustable bolt hole circle, aluminum. For use with Wachendorff Automation WDG 58V series encoders.
<a href="#"><u>MW58B</u></a>	\$28.00	Wachendorff Automation right angle bracket, aluminum. For use with Wachendorff Automation WDG 58V series encoders.
<a href="#"><u>SP300*</u></a>	\$26.00	Wachendorff Automation servo mount clamp, steel. For use with Wachendorff Automation WDG1 36J series encoders.
<a href="#"><u>QF58B</u></a>	\$28.00	Wachendorff Automation square mounting flange, 48mm bolt hole square, anodized aluminum. For use with Wachendorff Automation WDG 58V series encoders.

\* Note: ADC Part Number SP300 is Wachendorff Part Number SP-3-00.



[SP300](#)



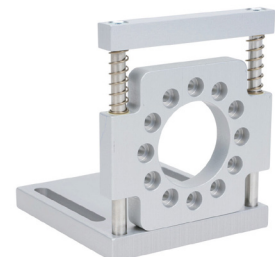
[QF58B](#)



[WDGQF58B04](#)



[MW58B](#)



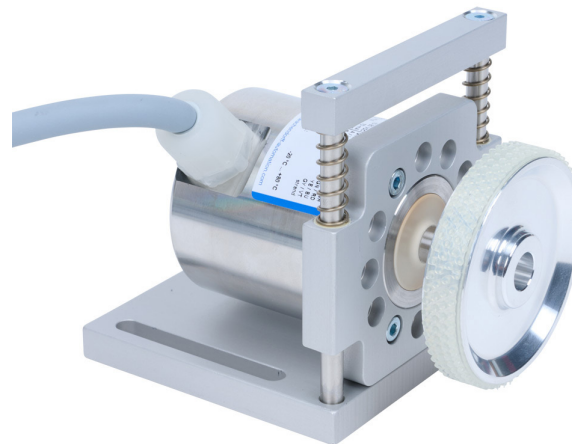
[WDGDH10000](#)



[DSK290606](#)



[FB29B0606](#)



[WDGDH10000](#) with 58V encoder and wheel

# Encoder Selection Guide

## SAE Dimension Encoders & Metric Dimension Encoders

Encoder Selection Guide												
Type	Duty	Series	Encoder Diameter	Shaft Diameter	Shaft Type	Operating Voltage (VDC) and Electrical Output	IP Rating	Cable	Max Radial Load (N)	Max Axial Load (N)	Available Resolutions (PPR)	Brand
Incremental	Modular Kit	AMT	28mm, 42mm	2, 3, 4, 5, 6, 8 mm 3/16, 1/4, 3/8, 1/2, 5/8 inch	Hollow	5V Line Driver (TTL) or 5V Push-Pull (Totem Pole)	IP20	Custom cables sold separately	N/A	N/A	Programmable up to 4096	Same Sky
		MTRA	31mm	5mm 1/4", 3/8"	Hollow	5V Line Driver (TTL) or 5V Push-Pull (Totem Pole)	IP20	Custom cables sold separately	N/A	N/A	400, 1000	SureStep
	Light Duty	TRD-S(H)R	38mm, 40mm	8mm	Solid or Hollow	5V Line Driver (TTL) or 5-26V NPN/PNP Open Collector (HTL)	IP50 or IP65	Integral 2m pigtail cable	20	10	100, 200, 360, 500, 600, 1000, 1024, 2000, 2500	JTEKT
		A41	41mm	1/4"	Solid or Hollow	5-30 VDC Universal output circuit: Push-Pull (Totem Pole), or NPN/PNP Open Collector (HTL), or Line Driver (TTL)	IP64	Integral 2m pigtail cable	20	20	100, 200, 360, 500, 1000, 1024, 200, 2048, 3600, 4096	Lika
	Medium Duty	A50	50mm	1/4", 3/8"	Hollow		IP65	M12 cables sold separately	20	20	360, 1000, 1024, 2048	
		A80	80mm	30mm (reducer bushings available for 19 & 20mm, 5/8", 7/8", 1, and 1 1/8")	Hollow		IP64	M23 cables sold separately	30	30	1024	
	Medium Duty	AQ58/59	58mm, 59mm	3/8" solid, 15mm hollow (reducer bushings available for 6, 8, 10, 11, 12 mm; 1/4, 3/8, 1/2 inch)	Solid or Hollow	5-30 VDC Universal output circuit: Push-Pull (Totem Pole), or NPN/PNP Open Collector (HTL), or Line Driver (TTL)	IP65	M12 cables sold separately	100	100	Programmable from 1 to 16,384 (default 1024)	JTEKT
		AR01	58mm	15mm	Solid Dual-shaft		IP65	M12 cables sold separately	50	50	250 (linear res: 0.36 deg/cts) 1250 (linear res: 0.072 deg/cts)	
		TRDA-20	2"	3/8"	Solid	5VDC Line Driver (TTL) or 5-30 VDC Push-Pull (Totem Pole)	IP50	Integral 2m pigtail cable	50	30	100, 360, 500, 1000, 1024, 2500	
		TRDA-25	2.5" flange (w/2.0" body)	3/8"	Solid		IP65	Military Spec (MS) cables sold separately	50	30	100, 360, 500, 1000, 1024, 2500	
		TRD-N(H)	50mm	8mm	Solid or Hollow		IP65	Integral 2m pigtail cable	50	30	3, 4, 5, 10, 30, 40, 50, 60, 100, 120, 200, 240, 250, 300, 360, 400, 480, 500, 600, 750, 1000, 1024, 1200, 2000, 2500	
	Heavy Duty	WDGI 36J	36mm	10mm	Solid	4.75-30 VDC Universal (HTL or TTL, single-ended or differential)	IP69K	8-pin M12 A-coded cable	300	300	60, 100, 360, 500, 1000, 1024, 2000, 2500, 4096, 5000	Wachendorff
		WDG 58V	58mm	10mm	Solid	5-30 VDC universal (HTL or TTL, single-ended or differential) or 4.75-5.5 VDC Line Driver (Differential) or 10-30 VDC Push-Pull (Totem)	IP69K	Integral 5m pigtail	100	100	60, 100, 360, 500, 1000, 1024, 2000, 2500, 4096, 5000	
		TRD-GK	78mm	10mm	Solid	10-30 VDC Push-Pull (Totem Pole)	IP65	Integral 2m pigtail cable	100	50	30, 100, 120, 200, 240, 250, 300, 360, 400, 500, 600, 1000, 1200, 2000, 2500, 3600, 5000	JTEKT
Absolute	Medium Duty	TRD-NA	50mm	8mm	Solid	10-30V NPN/PNP Open Collector (HTL)	IP65	Integral 2m pigtail cable	50	30	32, 64, 128, 180, 256, 360, 512, 720, 1024 (Gray code)	Lika
		AM5x <sup>1</sup>	58mm	6-15mm, 3/8"	Solid or Hollow	5-30 VDC, 10-30 VDC	IP65	M12 cables sold separately	40	40	Programmable up to 8192 ppr (13 bit), up to 16384 turns (14 bit)	

1 - AM5x encoders have different versions supporting 4 different outputs - Ethernet/IP, Modbus TCP, EtherCAT, and Modbus RTU (RS485).