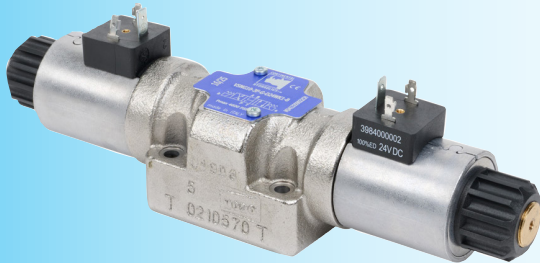
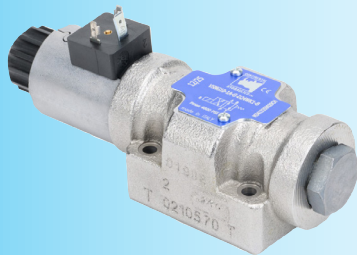




VSNG10 Series D05 Hydraulic Valves



Part No. [AD05004](#)



Part No. [AD05006](#)

Overview

NFPA D05 hydraulic solenoid valves delivering high performance and higher flow capacity than D03 valves. Mounting bolts included.

Features

- 4-way, 2- or 3-position
- Four different center conditions
- Cast iron body with zinc-nickel coating for excellent corrosion resistance
- VSNG10 series valves use DC coils; however, with the 120V model, it can be operated with 120 VAC using the required rectified connector (ADACC010)
- 120 VAC or 24 VDC single or double solenoids
- Manual overrides
- 18mm DIN style wiring plug
- 4600 psi maximum operating pressure
- NFPA D05 ISO 4401-05



See www.AutomationDirect.com for a wide variety of fitting and cable options

VSNG10 Series D05 Hydraulic Valves												
Part No.	Model No.	Ports	Position	Type	Solenoid	GPM	Voltage	Power Rating	Weight (lb)	Manufacturer Specifications	Drawing Link	Price
AD05001*	VSNG10-1A-G-D110WK1	4-port (4-way)	2-position	N/A	Single solenoid spring return	33	120 VAC/VDC*	28.2W	5.13	PDF	PDF	\$263.00
AD05002	VSNG10-3B-G-D24WK1		3-position	Center open	Double solenoid		24 VDC	31W	6.34		PDF	\$263.00
AD05003	VSNG10-3A-G-D24WK1			Center closed	Double solenoid	6.31			PDF		\$263.00	
AD05004	VSNG10-3F-G-D24WK1			Center float	Double solenoid	6.28	PDF	\$285.00				
AD05005	VSNG10-3L-G-D24WK1			Center tandem	Double solenoid	26.5	6.30	PDF	\$253.00			
AD05006	VSNG10-1A-G-D24WK1		2-position	N/A	Single solenoid spring return	33	5.14	PDF	\$227.00			

*Note: When part no. [AD05001](#) (VSNG10-1A-G-D110WK1) is used with 120 VAC, the rectifier DIN connector part no. [ADACC010](#) (VEA-6FR-A) is required.

Coil exchanges can only be AC to AC or DC to DC as cores / operators are different sizes.

For additional specification and mounting details, see manufacturer specifications.



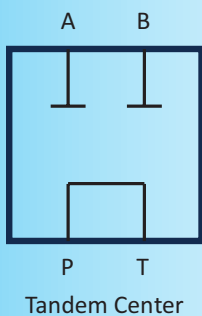
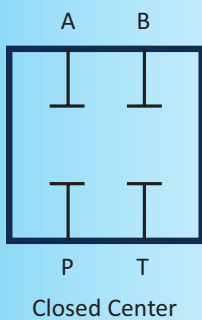
Hydraulic Valves - Overview

Valve Types

NFPA size D03 and D05 directional control valves in 4-way, 2- or 3-position configurations. D03 valves are available with solenoid operation (DIN or conduit box connections) or manual hand lever actuation.

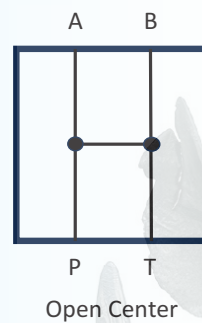
Closed Center Valves

A closed center valve is typically used in circuits with variable volume, pressure compensated pumps. These style valves have all port blocked in the neutral position preventing flow to or from the actuators or pumps. **Note:** Closed center valves will not hold loads in many applications. Separate load holding devices should be used where needed.



Open Center Valves

An open center valve is typically used in circuits that use fixed displacement pumps. These style valves with all ports open provide several benefits, allow for unloading the pump back to the reservoir with minimal resistance and heat buildup and allow open connection circuit for actuators that need to "freewheel" to a stop.

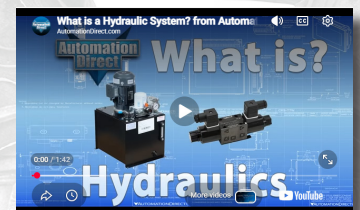


Tandem Center Valves

A tandem center valve is typically used in circuits that use fixed displacement pumps. These style valves allow for unloading the pump back to the reservoir with minimal resistance and heat buildup. The A and B work ports are blocked in the neutral position preventing flow to or from the actuators.

Float Center Valves

A float center valve is typically used in circuits with variable volume, pressure compensated pumps. These style valves the work ports are connected to the tank port in the neutral position allowing a "freewheel" effect when needed, as well as draining all pressure when used in conjunction with pilot operated check valves or counterbalance valves.



Click on the thumbnail or go to <https://www.automationdirect.com/VID-HY-0004> for a short video on Hydraulic Systems.



Hydraulic Valve Accessories





Overview

Continental subplates are built to NFPA standard dimensions to fit D03 or D05 valves. They are available with side ports or side and bottom ports. These subplates are also available with a cavity to fit a standard C10-2 cartridge relief valve.

Replacement solenoid coils, seal kits and mounting bolts are also available.



Subplates Made in USA

Hydraulic Valve Accessories						
Model Photo	Part No.	Model No.	Description	Weight (lb)	Drawing Link	Price
	ADSP0001	SD03AS08S	Continental subplate, aluminum body, SAE size -8 O-ring port(s), side ports. For use with NFPA D03 valves.	1.73	PDF	\$159.00
	ADSP0002	SD03ASB08S	Continental subplate, aluminum body, SAE size -8 O-ring port(s), side and bottom ports. For use with NFPA D03 valves.	1.80	PDF	\$180.00
	ADSP0003	SD03ASBR708S	Continental subplate, aluminum body, SAE size -8 O-ring port(s), C10-2 relief valve cavity, side and bottom ports. For use with NFPA D03 valves. Purchase relief valve separately.	3.16	PDF	\$189.00
	ADSP0004	SD05AS12S	Continental subplate, aluminum body, SAE size -8 O-ring port(s), side ports. For use with NFPA D05 valves.	1.43	PDF	\$106.00
	ADSP0005	SD05ASB12S	Continental subplate, aluminum body, SAE size -8 O-ring port(s), side and bottom ports. For use with NFPA D05 valves.	2.44	PDF	\$181.00
	ADSP0006	SD05ASBR712S	Continental subplate, aluminum body, SAE size -8 O-ring port(s), C10-2 relief valve cavity, side and bottom ports. For use with NFPA D05 valves. Purchase relief valve separately.	3.04	PDF	\$190.00
	ADACC001	D24WK1	Continental solenoid coil, replacement, 24 VDC, 31W, DIN 43650 connector. For use with Continental VS6M and VSNG10 series valves.	1.02	PDF	\$42.50
	ADACC002	D110K1	Continental solenoid coil, replacement, 120 VDC, 28.2W, DIN 43650 connector. For use with Continental VSNG10 series valves.	0.96	PDF	\$48.00
	ADACC003	1013096	Continental seal kit, replacement. For use with Continental D03 series valves. Includes (4) surface O-rings and (2) core tube O-rings.	0.02	PDF	\$48.00
	ADACC004	1030381	Continental seal kit, replacement. For use with Continental D05 series valves. Includes (4) surface O-rings and (2) core tube O-rings.	0.02	PDF	\$22.50
	ADACC005	1013316	Continental seal kit, replacement. For use with Continental D03 series manual valves. Includes (4) surface O-rings and (2) core tube O-rings.	0.07	PDF	\$137.00
	ADACC006	1008406	Continental mounting bolts, for use with Continental D03 series valves.	0.05	PDF	\$15.00
	ADACC007	1019657	Continental mounting bolts, for use with Continental D05 series valves.	0.10	PDF	\$23.00
	ADACC008	121472	Continental mounting bolts, for use with Continental D03 series manual valves.	0.04	PDF	\$12.00

To obtain the most current agency approval information, see the Agency Approval Checklist section on the specific part number's web page.

Note: Power AC Coils incorporate integrally molded full wave rectifiers.

AC Coils are rated 50/60 HZ.

For additional specification and mounting details, see manufacturer specifications.



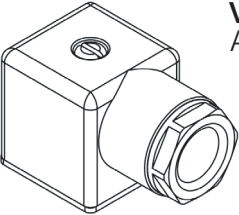
Hydraulic Valve Accessories

Hydraulic Valve Accessories						
Model Photo	Part No.	Model No.	Description	Weight (lb)	Drawing Link	Price
	ADACC009	A110K1	Continental solenoid coil, replacement, 120 VAC, 42 VA, DIN 43650 connector. For use with Continental VS6M series valves.	0.95	PDF	\$32.00
	ADACC010	VEA-6FR-A	Continental field wireable solenoid valve connector, for use with DIN 43650A 110 VDC solenoid valves. Graetz bridge rectifier for 110/120 VAC power supply included.	0.07	PDF	\$17.50
	ADACC011	1012953AD	Continental solenoid coil, replacement, 120 VAC, 22W, 2-pin connector. For use with Continental VSD03 series valves.	0.75	PDF	\$52.00
	ADACC012	1012957AC	Continental solenoid coil, replacement, 24 VDC, 30W, 2-pin connector. For use with Continental VSD03 series valves.	0.95	PDF	\$67.00

To obtain the most current agency approval information, see the Agency Approval Checklist section on the specific part number's web page. AC Coils are rated 50/60 HZ.

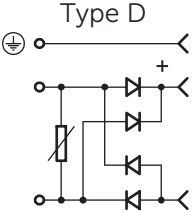
For additional specification and mounting details, see manufacturer specifications.

DIN Connector
43650 Form A / ISO 4400



VEA-6FR-A
ADACC010

PC11 ISO Strain Relief



Type D

Built in Graetz Bridge Rectifier

Two poles + ground with Graetz bridge rectifier: for alternate current power supply source and direct current coils with current consumption max 1 ampere.