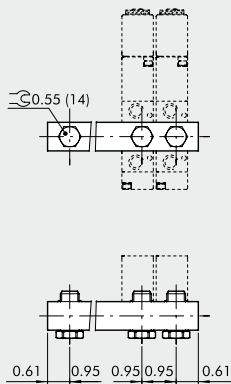


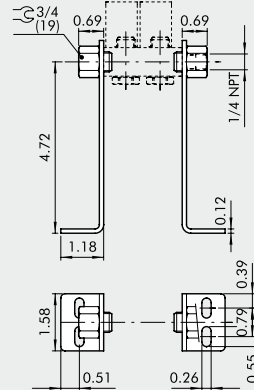
ACCESSORIES: 1/8" NPT MANIFOLDS FOR SERIES 70 PNV-SOV VALVES

MANIFOLD WITH 2 TO 7 POSITIONS + FITTINGS



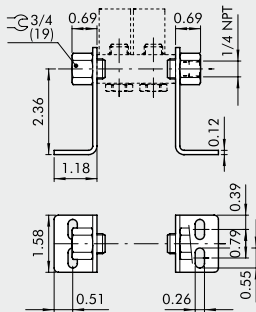
Code	Description	Weight [lb]
0221000200U	CSA-18-02 U	0.154
0221000300U	CSA-18-03 U	0.218
0221000400U	CSA-18-04 U	0.289
0221000500U	CSA-18-05 U	0.357
0221000600U	CSA-18-06 U	0.423
0221000700U	CSA-18-07 U	0.505

BRACKET SET H120



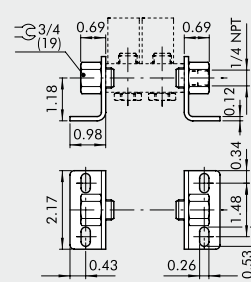
Code	Description	Weight [lb]
0221000190U	CSA-18-00 U	0.681

BRACKET SET H60



Code	Description	Weight [lb]
0221000191U	CSA-18-0C U	0.470

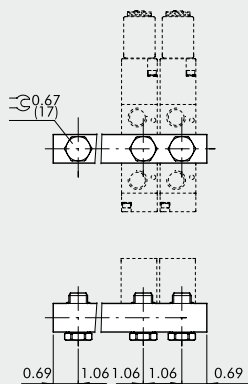
BRACKET SET H30



Code	Description	Weight [lb]
0221000192U	CSA-18-0E U	0.399

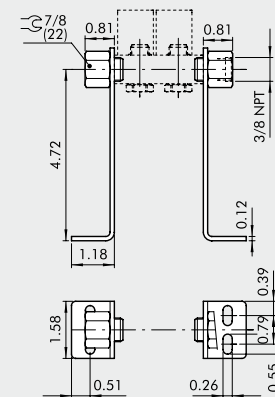
ACCESSORIES: 1/4" NPT MANIFOLDS FOR SERIES 70 PNV-SOV VALVES

MANIFOLD WITH 2 TO 7 POSITIONS + FITTINGS



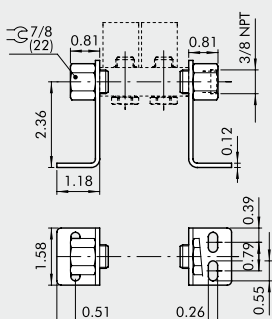
Code	Description	Weight [lb]
0222000200U	CSA-14-02 U	0.196
0222000300U	CSA-14-03 U	0.289
0222000400U	CSA-14-04 U	0.384
0222000500U	CSA-14-05 U	0.470
0222000600U	CSA-14-06 U	0.556
0222000700U	CSA-14-07 U	0.723

BRACKET SET H120



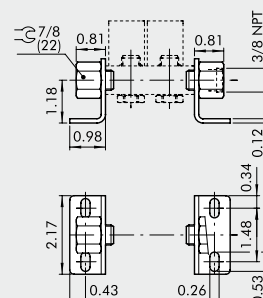
Code	Description	Weight [lb]
0222000190U	CSA-14-00 U	0.745

BRACKET SET H60



Code	Description	Weight [lb]
0222000191U	CSA-14-0C U	0.534

BRACKET SET H30



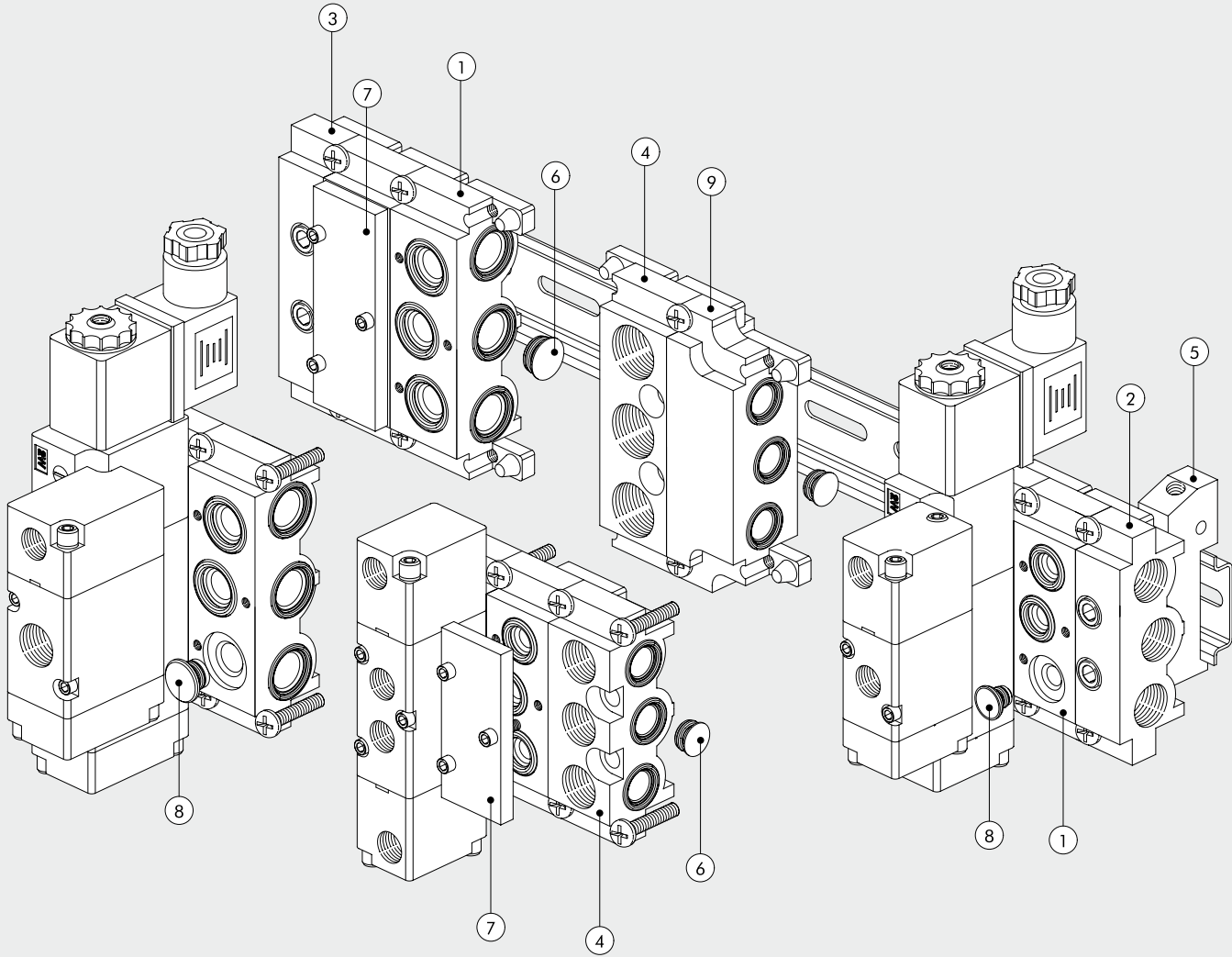
Code	Description	Weight [lb]
0222000192U	CSA-14-0E U	0.461

ACCESSORIES: MANIFOLD BASES FOR SERIES 70 PNV-SOV VALVES WITH NPT PORTS

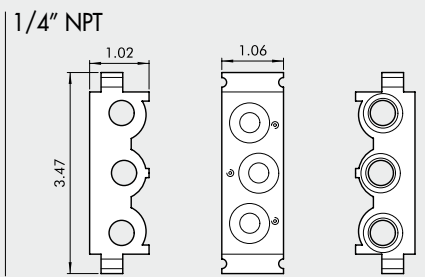
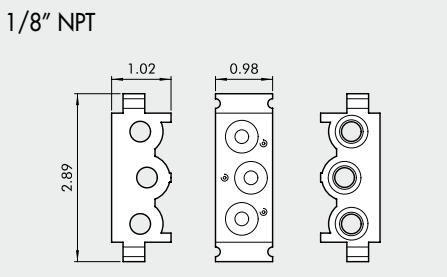
MODULAR BASES FOR SERIES 70 SOV-PNV VALVES WITH NPT PORTS

VALVES

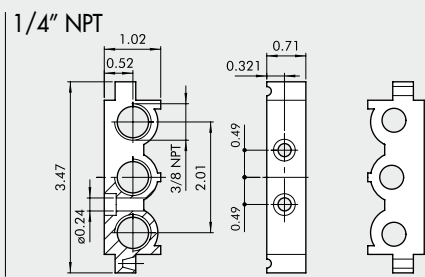
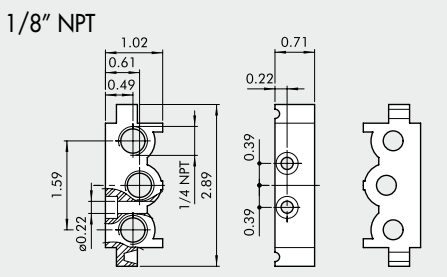
ACCESSORIES FOR VALVES SERIES 70



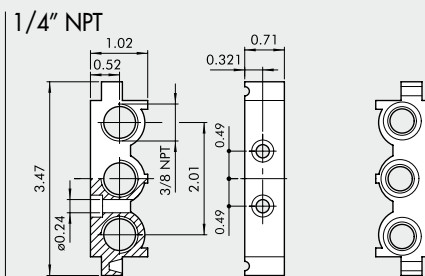
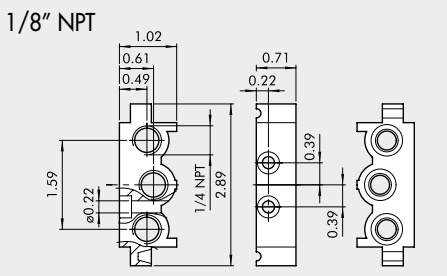
	1/8" NPT	1/4" NPT	
Reference	Code	Code	Description
①	0226004150	0226005150	Modular manifold base
②	0226004201U	0226005201U	End plate without OR U
③	0226004200U	0226005200U	End plate with OR U
④	0226004300U	0226005300U	Intermediate part for upper feed
⑤	0226004600	0226005600	Adapter for omega bar
⑥	0226004000	0226005000	Intermediate diaphragm
⑦	0226004500	0226005500	Blanking plate
⑧	0226004001	0226005001	3/2 cap
⑨	0226006600	-	Dimensional adapter

1 MODULAR BASE


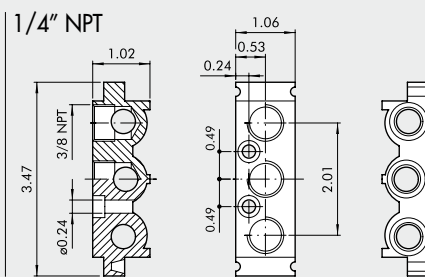
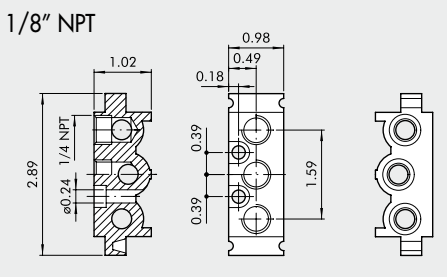
Code	Description	Weight [lb]
0226004150	Modular base MANIFOLD 1/8"	0.243
0226005150	Modular base MANIFOLD 1/4"	0.289

2 END PLATE WITHOUT OR


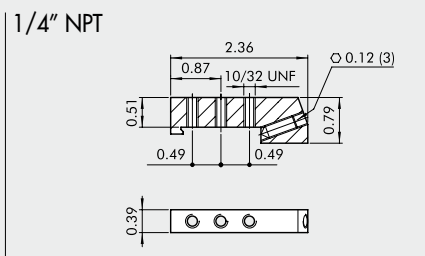
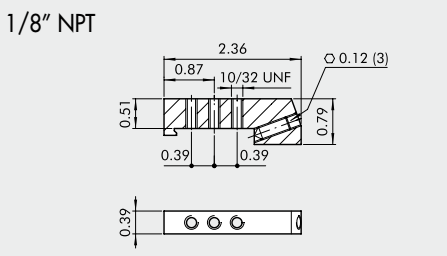
Code	Description	Weight [lb]
0226004201U	End plate without OR 1/8" U	0.115
0226005201U	End plate without OR 1/4" U	0.126

3 END PLATE WITH OR


Code	Description	Weight [lb]
0226004200U	End plate with OR 1/8" U	0.163
0226005200U	End plate with OR 1/4" U	0.176

4 INTERMEDIATE PART FOR UPPER FEED


Code	Description	Weight [lb]
0226004300U	Intermediate part for upper feed 1/8"	0.205
0226005300U	Intermediate part for upper feed 1/4"	0.240

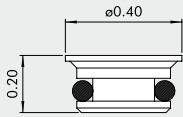
5 ADAPTER FOR OMEGA BAR BASES (DIN EN 50022)


Code	Description	Weight [lb]
0226004600	Adapter 1/8"	0.101
0226005600	Adapter 1/4"	0.101

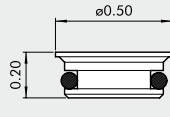
N.B.: Also for multiple bases

⑥ INTERMEDIATE DIAPHRAGM

1/8" NPT



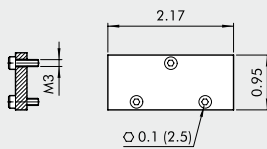
1/4" NPT



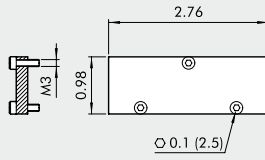
Code	Description	Weight [lb]
0226004000	Intermediate diaphragm 1/8"	0.004
0226005000	Intermediate diaphragm 1/4"	0.007

⑦ BLANKING PLATE FOR UNUSED POSITIONS

1/8" NPT



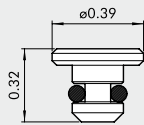
1/4" NPT



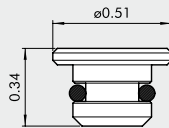
Code	Description	Weight [lb]
0226004500	Blanking plate pcs 1/8"	0.051
0226005500	Blanking plate pcs 1/4"	0.064

⑧ PLUG FOR 3/2

1/8" NPT

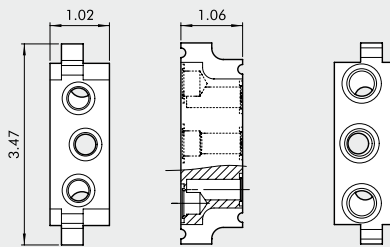


1/4" NPT



Code	Description	Weight [lb]
0226004001	Blanking plug 3/2 1/8"	0.004
0226005001	Blanking plug 3/2 1/4"	0.009

⑨ DIMENSIONAL ADAPTER 1/8" - 1/4"

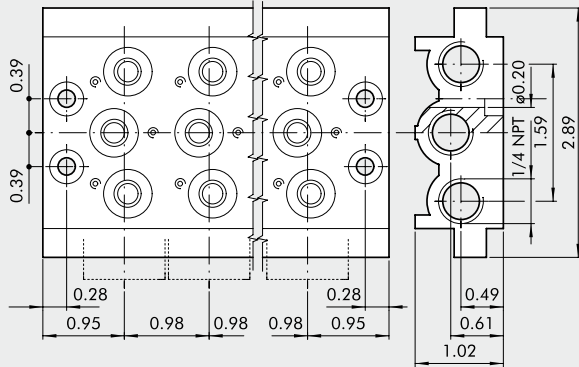


Code	Description	Weight [lb]
0226006600	Adapter 1/8", 1/4"	0.390

NOTES

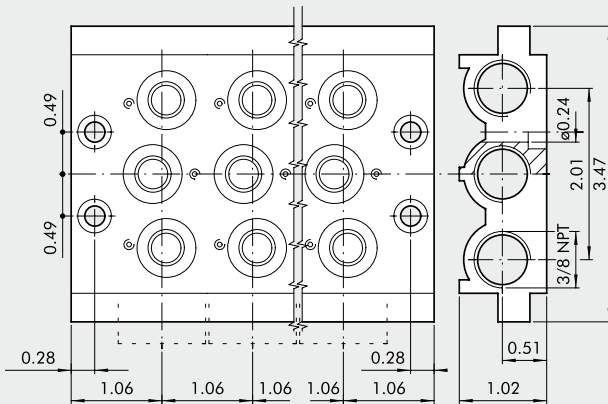
ACCESSORIES: MULTIPLE BASES FOR SERIES 70 PNV-SOV VALVES

MULTIPLE BASES 1/8" NPT



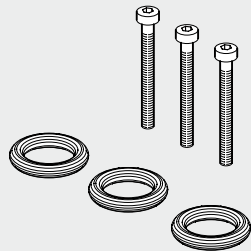
Code	Description	Abbrev.	Weight [lb]
0223000201U	2-position base U	CVM-18-02 U	0.520
0223000301U	3-position base U	CVM-18-03 U	0.708
0223000401U	4-position base U	CVM-18-04 U	0.897
0223000501U	5-position base U	CVM-18-05 U	1.089
0223000601U	6-position base U	CVM-18-06 U	1.294
0223000701U	7-position base U	CVM-18-07 U	1.568
0223000801U	8-position base U	CVM-18-08 U	1.676
0223000901U	9-position base U	CVM-18-09 U	1.857
0223001001U	10-position base U	CVM-18-10 U	2.035

MULTIPLE BASES 1/4" NPT



Code	Description	Abbrev.	Weight [lb]
0224000201U	2-position base U	CVM-14-02 U	0.653
0224000301U	3-position base U	CVM-14-03 U	0.895
0224000401U	4-position base U	CVM-14-04 U	1.136
0224000501U	5-position base U	CVM-14-05 U	1.376
0224000601U	6-position base U	CVM-14-06 U	1.616
0224000701U	7-position base U	CVM-14-07 U	1.863
0224000801U	8-position base U	CVM-14-08 U	2.108
0224000901U	9-position base U	CVM-14-09 U	2.326
0224001001U	10-position base U	CVM-14-10 U	2.395

GASKET KIT

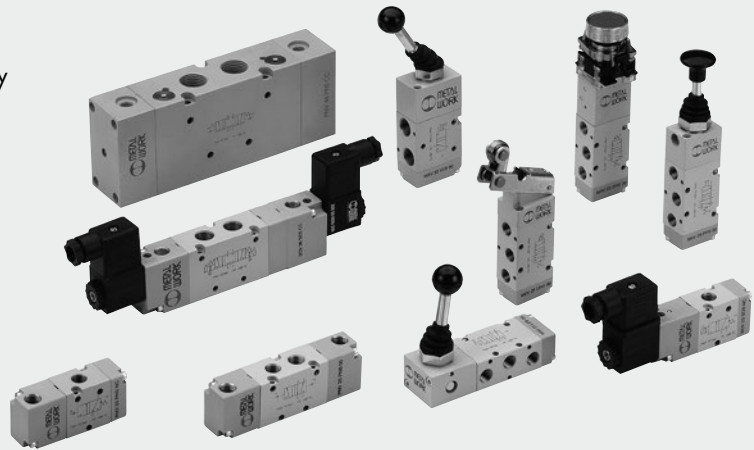


Code	Description	Weight [lb]
0226004701	Gasket kit for 1/8" base	0.011
0226005701	Gasket kit for 1/4" base	0.011

VALVES SERIES 70

This is Metal Work's full range. Available in three sizes: 1/8", 1/4", 3/8", 1/2". Three versions: 3/2; 5/2; 5/3, four different types of actuation (mechanical, manual, pneumatic and electric).

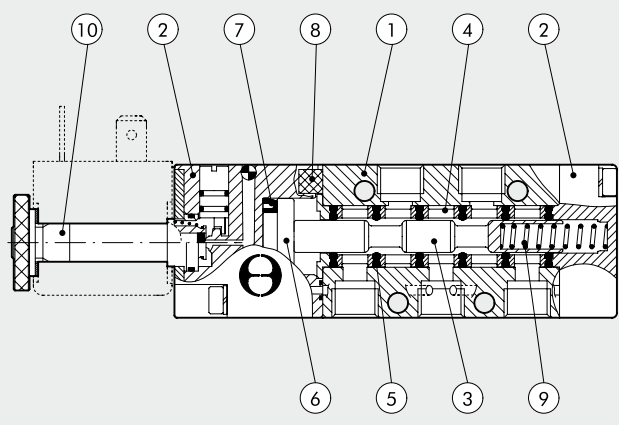
Series 70 valves can be used for a wide range of applications as they can be mounted in line, on the wall, on the cylinder using a special bracket, or in series on a multiple or manifold base.



TECHNICAL DATA	1/8" NPT	1/4" NPT	3/8" NPT	1/2" NPT	
Thread on the valve ports	1/8" NPT	1/4" NPT	3/8" NPT	1/2" NPT	
Operating pressure:					
• monostable			36.3 to 145		
• bistable			14.5 to 145		
• asserved			vacuum to 145		
Minimum pilot pressure			36.3		
Operating temperature range			14 to +140		
Nominal diameter	in	0.20	0.30	0.52	0.59
Conductance C	scfm/psi	0.30	0.65	1.23	2.37
Critical ratio b	psi/psi	0.32	0.27	0.32	0.43
Flow rate at 87 psi ΔP 7.25 psi	scfm	14	26.5	55.2	113
Flow rate at 87 psi ΔP 14.5 psi	scfm	19.5 Cv 0.55	39 Cv 1.1	75 Cv 2.1	163 Cv 4.6
Installation	In any position (vertical assembly is not recommended for bistable valves subjected to vibration)				
Fluid	Filtered air without lubrication; lubrication, if used, must be continuous				
Recommended lubricant	ISO and UNI FD 22				
Maximum coil nut torque	lbf ft	0.74			
Compatibility with oils	Please refer to page 5-4 of the technical documentation				

COMPONENTS

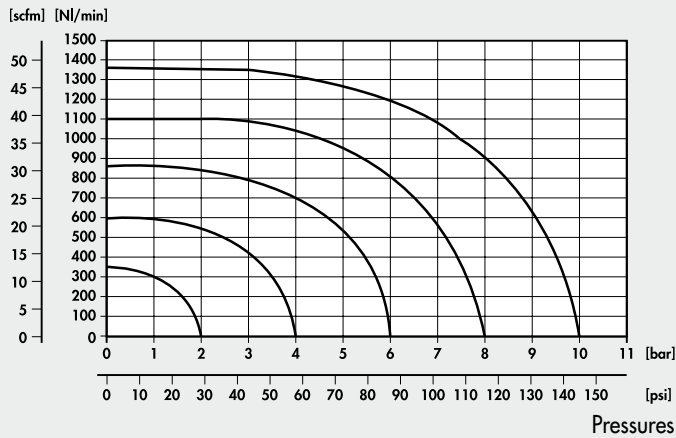
- ① VALVE BODY: Aluminium
- ② CONTROL/END CAP: plastic
- ③ SPOOL: chemically nickel-plated aluminium
- ④ DISTANCE PLATES: plastic
- ⑤ GASKETS: NBR
- ⑥ PISTONS: Hostaform®
- ⑦ PISTON GASKET: NBR
- ⑧ FILTER: sintered bronze
- ⑨ SPRINGS: special steel
- ⑩ OPERATOR: Brass pipe - Stainless steel core



FLOW CHARTS

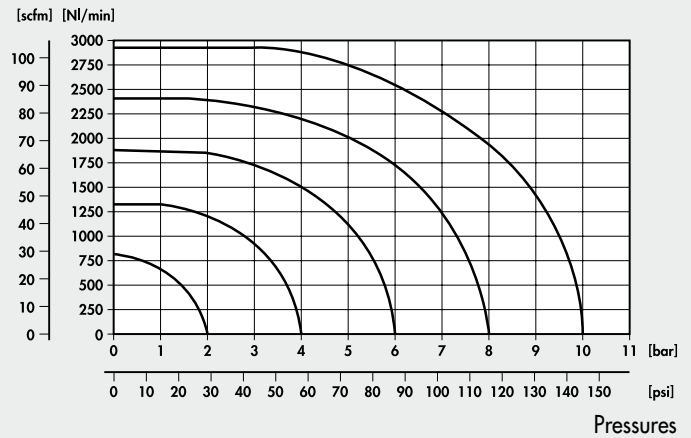
VALVES SERIES 70, 1/8"

Flow rates



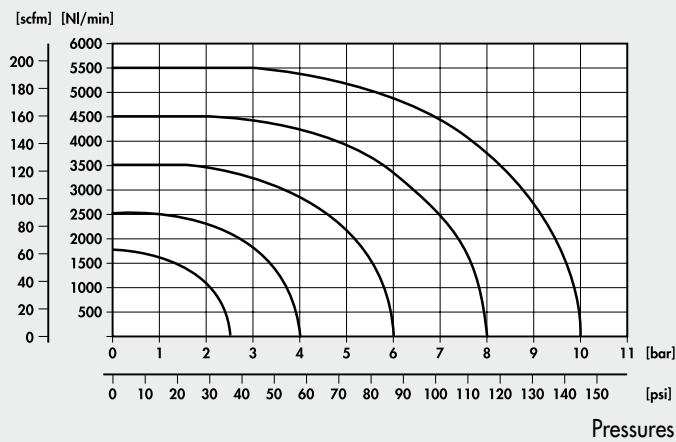
VALVES SERIES 70, 1/4"

Flow rates



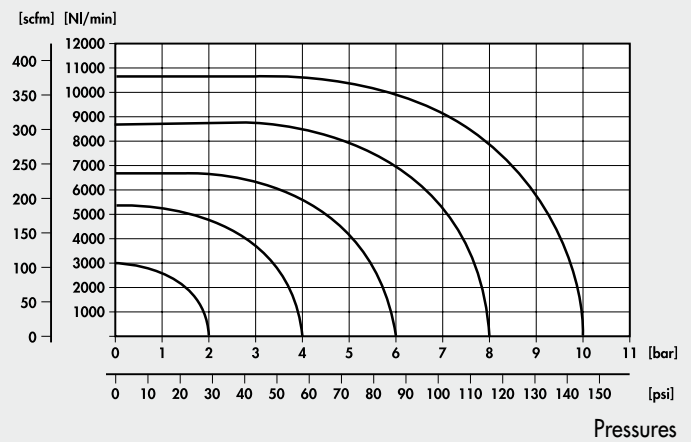
VALVES SERIES 70, 3/8"

Flow rates



VALVES SERIES 70, 1/2"

Flow rates



NOTES

Blank area for notes.