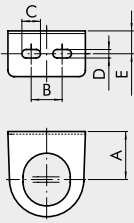


MOUNTING BRACKET FOR REG. AND FR KNOB



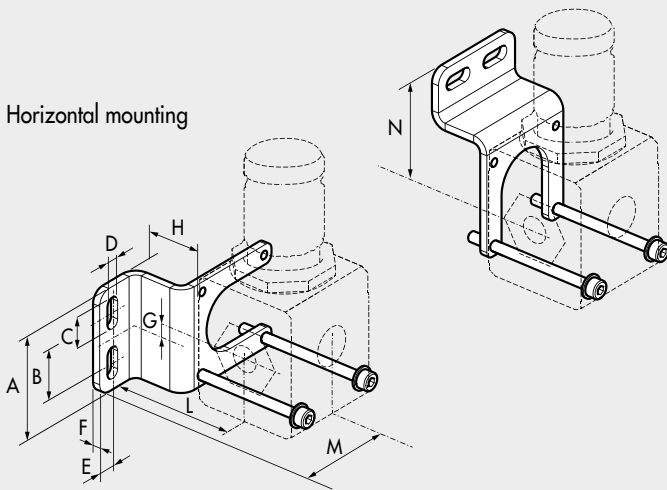
| Code | Description |
|---------|--------------------------|
| 9200701 | SF100 - BIT-ND 1/4 - SY1 |
| 9400701 | SF200 - ND-3/8 1/2 - SY2 |

| Code | A | B | C | D | E |
|---------|----|----|----|-----|------|
| 9200701 | 32 | 20 | 12 | 5.5 | 14.2 |
| 9400701 | 42 | 40 | 12 | 5.5 | 15 |

MOUNTING BRACKET

Vertical mounting

Horizontal mounting

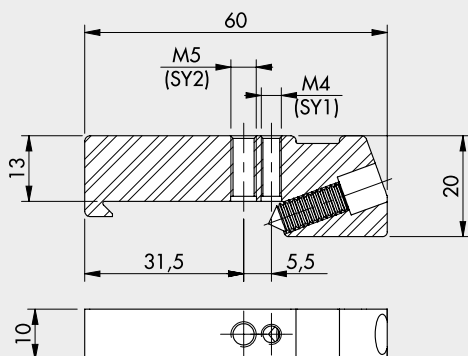


| Code | Description |
|----------|----------------------|
| 9200716X | Mounting bracket SY1 |
| 9200717X | Mounting bracket SY2 |

Note: Supplie complete with screws and washers.
Max torque 0.8 Nm for SY1 - Max torque 2.0 Nm for SY2
Codes to be used for units in the standard and the anti-corrosion version

| Code | A | B | C | D | E | F | G | H | L | M | N |
|----------|------|----|------|-----|---|---|-----|----|------|------|------|
| 9200716X | 41.5 | 20 | 12.7 | 5.5 | 7 | 3 | 0.8 | 25 | 43.8 | 46.5 | 47 |
| 9200717X | 60 | 40 | 12.7 | 5.5 | 8 | 3 | 1.3 | 30 | 57.5 | 58.3 | 59.5 |

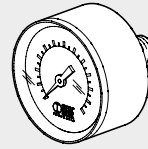
CONNECTION BRACKETS ON THE BAR (DIN EN50022)



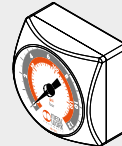
| Code | Description |
|----------|---|
| 9200718X | Connection brackets on DIN bar, SY1 - SY2 |

Note: 2 pieces per pack complete with screws and washers.
Max torque 0.8 Nm for SY1 - Max torque 2.0 Nm for SY2
Codes to be used for units in the standard and the anti-corrosion version

PRESSURE GAUGES

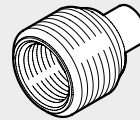


| Code | Description |
|---------|--------------|
| 9700101 | M 40 1/8 012 |
| 9700102 | M 40 1/8 04 |
| 9800101 | M 50 1/8 012 |
| 9800102 | M 50 1/8 04 |
| 9900101 | M 63 1/4 012 |



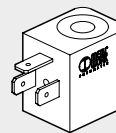
| | |
|---------|-----------------|
| 9700109 | M 40x40 1/8 04 |
| 9700110 | M 40x40 1/8 012 |

ADAPTERS FOR PRESSURE GAUGES (SY2)



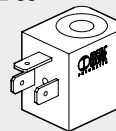
| Code | Description |
|---------|------------------------------------|
| 9210005 | 1/4 adapter for 1/8 pressure gauge |

COIL 22 mm FOR APR AND V3V ELPN



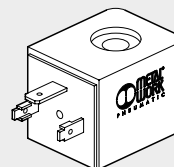
| Code | Description |
|-------------|-----------------------------|
| W0215000151 | Coil 22 Ø 8 BA 2W-12VDC |
| W0215000101 | Coil 22 Ø 8 BA 2W-24VDC |
| W0215000111 | Coil 22 Ø 8 BA 3.5VA-24VAC |
| W0215000121 | Coil 22 Ø 8 BA 3.5VA-110VAC |
| W0215000131 | Coil 22 Ø 8 BA 3.5VA-220VAC |

"UL" AND "CSA" COILS 22 mm



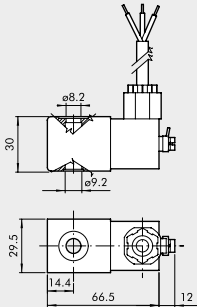
| Code | Description |
|-------------|--------------------------------|
| W0215000251 | Coil 22 Ø 8 BA 2W-12VDC UR |
| W0215000201 | Coil 22 Ø 8 BA 2W-24VDC UR |
| W0215000211 | Coil 22 Ø 8 BA 3.5VA-24VAC UR |
| W0215000221 | Coil 22 Ø 8 BA 3.5VA-110VAC UR |
| W0215000231 | Coil 22 Ø 8 BA 3.5VA-220VAC UR |

COIL 30 mm FOR APR AND V3V ELPN



| Code | Description |
|-------------|-----------------------------------|
| W0210010100 | Coil 30 Ø 8 2W-24VDC |
| W0210011100 | Coil 30 Ø 8 3.5VA-24VAC 50/60 HZ |
| W0210012100 | Coil 30 Ø 8 3.5VA-110VAC 50/60 HZ |
| W0210013100 | Coil 30 Ø 8 3.5VA-220VAC 50/60 HZ |

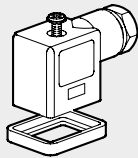
KIT FOR COIL EEXM



| Code | Description |
|------------|---|
| 0227606913 | Kit for coil 30 24 VDC EEXMT5 cable 3m |
| 0227606915 | Kit for coil 30 24 VDC EEXMT5 cable 5m |
| 0227608013 | Kit for coil 30 24 VAC EEXMT5 cable 3m |
| 0227608015 | Kit for coil 30 24 VAC EEXMT5 cable 5m |
| 0227608023 | Kit for coil 30 110 VAC EEXMT5 cable 3m |
| 0227608025 | Kit for coil 30 110 VAC EEXMT5 cable 5m |
| 0227608033 | Kit for coil 30 230 VAC EEXMT5 cable 3m |
| 0227608035 | Kit for coil 30 230 VAC EEXMT5 cable 5m |

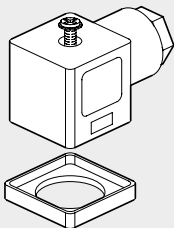
According to Atex 2014/34/EU rule,
 Ⓢ II 2G Ex mb IIC T4/T5 Gb
 Ⓢ II 2D Ex tb IIIC T130/T95 °C IP66 Db
N.B.: Supplied complete with adapter for Ø8 mm sleeve

ELECTRIC CONNECTOR 22 mm FOR APR AND V3V ELPN



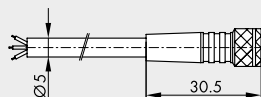
| Code | Description |
|-------------|---------------------------|
| W0970510011 | Connector standard |
| W0970510012 | Connector 22 LED 24V |
| W0970510013 | Connector 22 LED 110V |
| W0970510014 | Connector 22 LED 220V |
| W0970510015 | Connector 22 LED VDR 24V |
| W0970510016 | Connector 22 LED VDR 110V |
| W0970510017 | Connector 22 LED VDR 220V |
| W0970510070 | Connector 22 II 2 GD ATEX |

ELECTRIC CONNECTOR 30 mm FOR APR AND V3V ELPN



| Code | Description |
|-------------|---------------------------|
| W0970520033 | Connector 30 STD |
| W0970520034 | Connector 30 LED 24V |
| W0970520035 | Connector 30 LED 110V |
| W0970520036 | Connector 30 LED 220V |
| W0970520037 | Connector 30 LED VDR 24V |
| W0970520038 | Connector 30 LED VDR 110V |
| W0970520039 | Connector 30 LED VDR 220V |

M8 STRAIGHT CONNECTOR WITH CABLE FOR PRESSURE SWITCHES



| Pin | Cable color |
|-----|-------------|
| 1 | Brown |
| 3 | Blue |
| 4 | Black |

| Code | Description |
|------------|--|
| 02400A0100 | M8 female 3 PIN HIGH FLEX CL6 connector with cable L = 1 m |
| 02400A0250 | M8 female 3 PIN HIGH FLEX CL6 connector with cable L = 2.5 m |
| 02400A0500 | M8 female 3 PIN HIGH FLEX CL6 connector with cable L = 5 m |
| 02400A1000 | M8 female 3 PIN HIGH FLEX CL6 connector with cable L = 10 m |

Mobile laying cable, class 6 according to IEC 60228

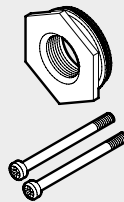
KIT COIL SIDE 22 IP65



| Code | Description |
|------------|-------------------------|
| 0222100100 | Kit for coils 22 - IP65 |

Improved IP65 protection, even after prolonged exposure to atmospheric agents.

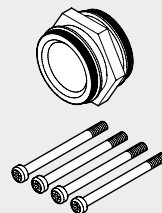
THREADED PORT



| Code | Description |
|----------|-----------------------------------|
| 9210001 | Kit IN OUT 1/8 SY1 |
| 9210002 | Kit IN OUT 1/4 SY1 |
| 9210003 | Kit IN OUT 3/8 SY1 |
| 9210011 | Kit IN OUT 3/8 SY2 |
| 9210012 | Kit IN OUT 1/2 SY2 |
| 9210013 | Kit IN OUT 3/4 SY2 |
| 9210014 | Kit IN OUT 1 SY2 |
| 9210001X | Kit IN OUT 1/8 SY1 anti-corrosion |
| 9210002X | Kit IN OUT 1/4 SY1 anti-corrosion |
| 9210003X | Kit IN OUT 3/8 SY1 anti-corrosion |
| 9210011X | Kit IN OUT 3/8 SY2 anti-corrosion |
| 9210012X | Kit IN OUT 1/2 SY2 anti-corrosion |
| 9210013X | Kit IN OUT 3/4 SY2 anti-corrosion |
| 9210014X | Kit IN OUT 1 SY2 anti-corrosion |

Max torque 0.4 Nm for SY1
 Max torque 2.5 Nm for SY2

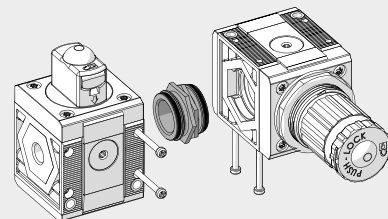
CONNECTING NIPPLE KIT



| Code | Description |
|----------|--|
| 9210000 | Connecting nipple kit SY1 |
| 9210010 | Connecting nipple kit SY2 |
| 9210000X | Connecting nipple kit SY1 anti-corrosion |
| 9210010X | Connecting nipple kit SY2 anti-corrosion |

Max torque 0.4 Nm for SY1
 Max torque 2.5 Nm for SY2

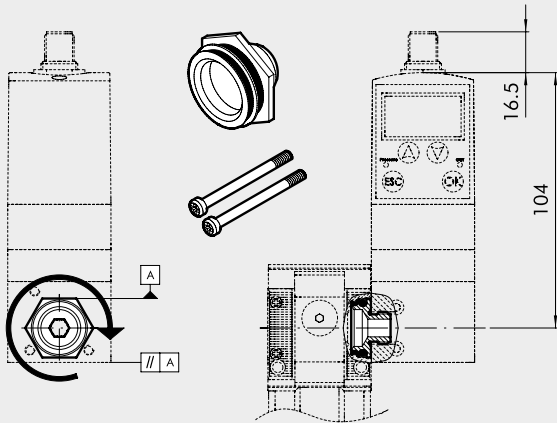
90° CONNECTING ELEMENT KIT



| Code | Description |
|----------|---|
| 9210009 | 90° SY1 connection element kit |
| 9210019 | 90° SY2 connection element kit |
| 9210009X | 90° anti-corrosion SY1 connection element kit |
| 9210019X | 90° anti-corrosion SY2 connection element kit |

Max torque 0.4 Nm for SY1
 Max torque 2.5 Nm for SY2

KIT CONNECTING REGTRONIC 1/4 (PAGE C6.10) AND GS REGULATOR (PAGE C6.2)



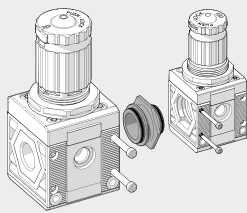
| Code | Description |
|---------|-------------------------------|
| 9210004 | Adapter for regtronic 1/4 SY1 |

Max torque for screw, 0.4 Nm

Instructions:

- 1) Screw the connecting bushing onto the REGTRONIC 1/4 as far as it will go. Use sealant on the G1/4 thread to provide a further seal.
- 2) Unscrew the bushing slightly until two surfaces of the hexagon are parallel to the body of REGTRONIC 1/4 (see diagram).
- 3) Insert the bushing into the Syntesi® unit.
- 4) Tighten the two self-tapping screws in the Syntesi® unit to a torque of 0.4 Nm max.

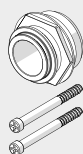
SY1 - SY2 SIZE ADAPTER



| Code | Description |
|----------|---------------------------------------|
| 9210006 | SY1 - SY2 size adapter |
| 9210006X | SY1 - SY2 size adapter anti-corrosion |

Max torque for screw, 0.4 Nm for SY1
Max torque for screw, 2.5 Nm for SY2

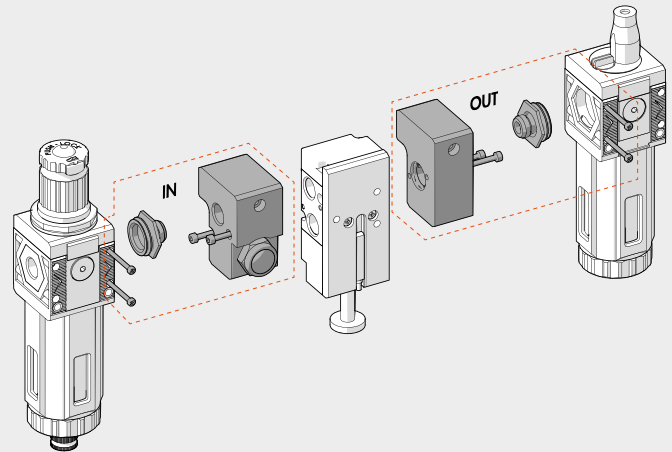
SY1 - SY2 KIT FOR CONNECTION TO FLUX 1 - 2



| Code | Description |
|------------|----------------------|
| 900099A002 | Adapter FLUX 1 - SY1 |
| 900099A003 | Adapter FLUX 2 - SY2 |

Max torque for screw, 0.4 Nm for SY1
Max torque for screw, 2.5 Nm for SY2
See page C6.33 for the assembly diagram.

SY1 - SY2 KIT FOR CONNECTION TO SERIE 70 SAFE AIR® VALVES

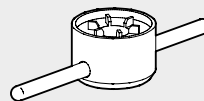


| Code | Description |
|---------|-----------------------------|
| 9210015 | IN 1/4 SY1 block accessory |
| 9210016 | OUT 1/4 SY1 block accessory |
| 9210022 | IN 3/8 SY1 block accessory |
| 9210023 | OUT 3/8 SY1 block accessory |
| 9210017 | IN 3/8 SY2 block accessory |
| 9210018 | OUT 3/8 SY2 block accessory |
| 9210020 | IN 1/2 SY2 block accessory |
| 9210021 | OUT 1/2 SY2 block accessory |

Max torque for screw, 0.4 Nm for SY1
Max torque for screw, 2.5 Nm for SY2

See page B1.151 for the assembly diagram.

BOWL DISASSEMBLY SPANNER



| Code | Description |
|---------|--------------------|
| 9170601 | CS TF - TL BIT/SY1 |
| 9210050 | CS TF - TL SY2 |

WALL-FIXING SCREW



| Code | Description |
|---------|--------------------------|
| 9210030 | M4 x 55 fixing screw SY1 |
| 9210031 | M5 x 75 fixing screw SY2 |

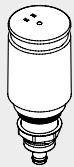
Max torque 0.8 Nm for SY1
Max torque 2.0 Nm for SY2

PADLOCK



| Code | Description |
|---------|-------------|
| 9062401 | Padlock |

AUTOMATIC DRAIN (RA)



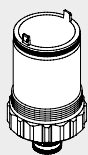
| Code | Description |
|---------|-------------------------------|
| 9000802 | RA automatic drain spare part |

AUTOMATIC DRAIN (SAC)



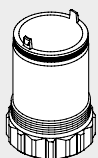
| Code | Description |
|---------|----------------------------|
| 9000803 | Spares SAC automatic drain |

BOWL RMSA/RA/SAC



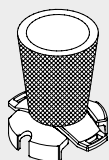
| Code | Description |
|---------|--------------------------|
| 9210100 | Bowl FIL FR DEP RMSA SY1 |
| 9210101 | Bowl FIL FR RA SY1 |
| 9210102 | Bowl FIL FR DEP SAC SY1 |
| 9210105 | Bowl FIL FR DEP RMSA SY2 |
| 9210106 | Bowl FIL FR RA SY2 |
| 9210107 | Bowl FIL FR DEP SAC SY2 |

LUBRICATOR BOWL



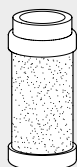
| Code | Description |
|---------|--------------|
| 9210110 | Bowl LUB SY1 |
| 9210115 | Bowl LUB SY2 |

FILTERING ELEMENT



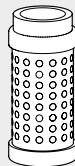
| Code | Description |
|---------|------------------------------------|
| 9210150 | Filtering element 5µm (yellow) SY1 |
| 9210151 | Filtering element 20µm (white) SY1 |
| 9210152 | Filtering element 50µm (blue) SY1 |
| 9210155 | Filtering element 5µm (yellow) SY2 |
| 9210156 | Filtering element 20µm (white) SY2 |
| 9210157 | Filtering element 50µm (blue) SY2 |

PURIFIER FILTERING ELEMENT



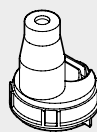
| Code | Description |
|---------|--------------------------|
| 9210160 | Cartridge 0.01µm DEP SY1 |
| 9210165 | Cartridge 0.01µm DEP SY2 |
| 9210162 | Cartridge 1µm DEP SY1 |
| 9210167 | Cartridge 1µm DEP SY2 |

AC FILTERING ELEMENT (ACTIVE CARBON)



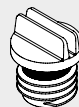
| Code | Description |
|---------|------------------|
| 9210161 | Cartridge AC SY1 |
| 9210166 | Cartridge AC SY2 |

TRANSPARENT LUBRICATOR COVER



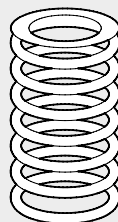
| Code | Description |
|---------|---------------------------|
| 9210180 | Transparent cover LUB SY1 |
| 9210185 | Transparent cover LUB SY2 |

LUBRICATOR OIL-FILLING CAP



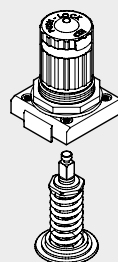
| Code | Description |
|---------|-------------------------|
| 9210181 | Oil-filling cap LUB SY1 |
| 9210186 | Oil-filling cap LUB SY2 |

SPRINGS FOR REGULATORS AND FR



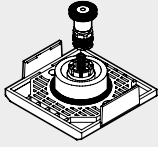
| Code | Description |
|----------|-------------------------------------|
| 9210190 | Spares MO 02 SY1 |
| 9210191 | Spares MO 04 SY1/SY1 anti-corrosion |
| 9210192 | Spares MO 08 SY1 |
| 9210193 | Spares MO 012 SY1 |
| 9210195 | Spares MO 02 SY2 |
| 9210196 | Spares MO 04 SY2 |
| 9210197 | Spares MO 08 SY2 |
| 9210198 | Spares MO 012 SY2 |
| 9210192X | Spares 08 SY1 anti-corrosion |
| 9210193X | Spares 012 SY1 anti-corrosion |
| 9210197X | Spares 08 SY2 anti-corrosion |
| 9210198X | Spares 012 SY2 anti-corrosion |

BELL FOR REG AND FR



| Code | Description |
|----------|-----------------------------|
| 9210200 | Bell 02 SY1 |
| 9210201 | Bell 04 SY1 |
| 9210202 | Bell 08 SY1 |
| 9210203 | Bell 012 SY1 |
| 9210220 | Bell 02 SY2 |
| 9210221 | Bell 04 SY2 |
| 9210222 | Bell 08 SY2 |
| 9210223 | Bell 012 SY2 |
| 9210202X | Bell 08 SY1 anti-corrosion |
| 9210203X | Bell 012 SY1 anti-corrosion |
| 9210222X | Bell 08 SY2 anti-corrosion |
| 9210223X | Bell 012 SY2 anti-corrosion |

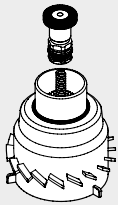
POPPET FOR REG



| Code | Description |
|----------|-------------------------------|
| 9210210 | Poppet REG SY1 |
| 9210230 | Poppet REG SY2 |
| 9210210X | Poppet REG SY1 anti-corrosion |
| 9210230X | Poppet REG SY2 anti-corrosion |

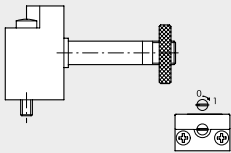
NOTES

POPPET FOR FR



| Code | Description |
|---------|--------------------|
| 9210211 | Poppet FR 5µm SY1 |
| 9210212 | Poppet FR 20µm SY1 |
| 9210213 | Poppet FR 50µm SY1 |
| 9210231 | Poppet FR 5µm SY2 |
| 9210232 | Poppet FR 20µm SY2 |
| 9210233 | Poppet FR 50µm SY2 |

CNOMO CONTROL FOR V3V AND APR SY2



| Code | Description |
|---------|---|
| 9453922 | Elpn Cnomo control kit, manual bistable |

NOTES