



# SC31 Series



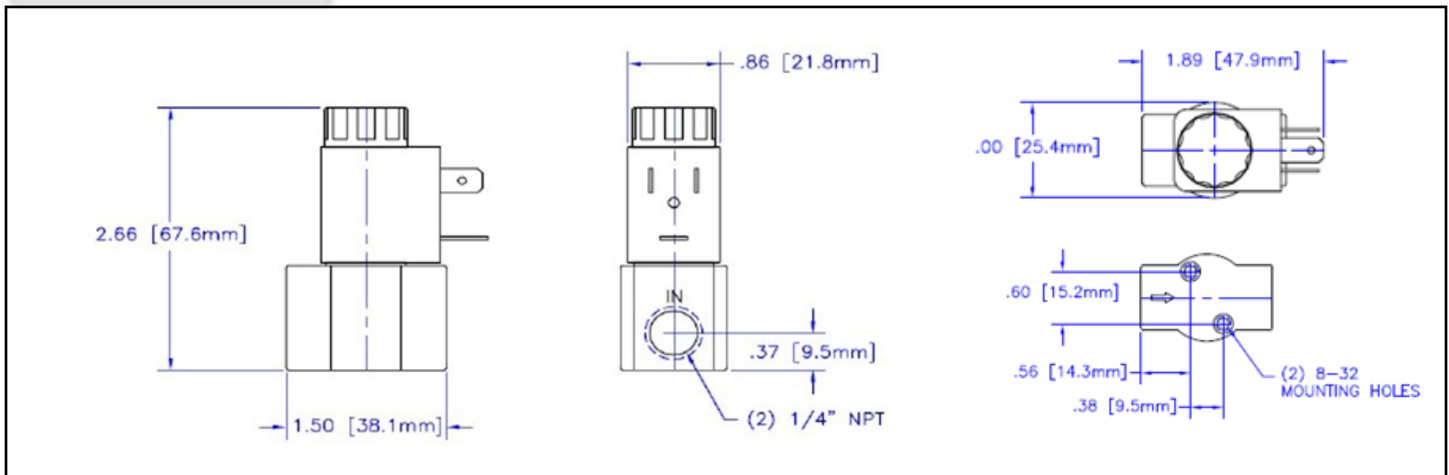
## 1/4" NPT Nylon Body 2-Way Direct Acting Normally Closed



Materials	Seals:	FKM, EPDM, Nitrile, PTFE, FFKM also available
	Orifice:	Stainless Steel
Electrical	Standard Housing:	DIN 43650 Form B
	Optional Housings:	18" Leads
	Standard Voltages:	24, 120, 240AC 60Hz; 50Hz available; 12, 24 DC; Contact GC Valves Customer Service for Additional Voltages.
	Voltage Tolerance:	±10% of applicable voltage
	Coil Class:	F
Operating Temperature	Ambient (Nominal):	32°F to 125°F
Mounting	Position:	Any
Approvals*	Agencies:	cURus, CE

\*Not Available for all variations

## Dimensions



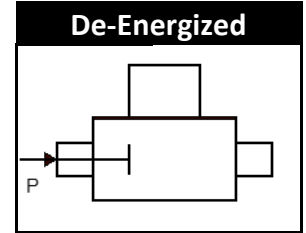
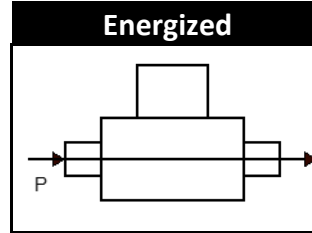
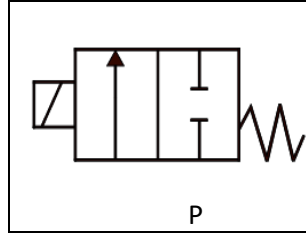


# SC311-1/4" NPT, Nylon, Normally Closed



## Valve Selection List

Normally Closed



Pipe Size	Orifice Size	Cv	Operating Pressure Differential (PSI)				Max. Fluid Temp.	Seal Material	Power Consumption		Model Code (24V/60HZ - DIN) Shown	
			Min.	Maximum		AC			DC	AC : vA		DC : Watts
				Air/Gas								
NPT	mm.			AC	DC	AC	DC	°F			Nylon Body	
1/4	1.2	0.046	0	203	203	203	203	176	FKM	6.5	4	SC311YN24VIBA2
	1.6	0.084	0	203	160	203	160	176	FKM	6.5	4	SC311YN24VIBA3
	2.0	0.112	0	203	116	203	116	176	FKM	6.5	4	SC311YN24VIBA4
	2.4	0.140	0	203	87	203	87	176	FKM	6.5	4	SC311YN24VIBA5
1/4	1.2	0.046	0	203	203	203	203	176	EPDM	6.5	4	SC311YN24CIBA2
	1.6	0.084	0	203	160	203	160	176	EPDM	6.5	4	SC311YN24CIBA3
	2.0	0.112	0	203	116	203	116	176	EPDM	6.5	4	SC311YN24CIBA4
	2.4	0.140	0	203	87	203	87	176	EPDM	6.5	4	SC311YN24CIBA5
1/4	1.2	0.046	0	203	203	203	203	176	NITRILE	6.5	4	SC311YN24NIBA2
	1.6	0.084	0	203	160	203	160	176	NITRILE	6.5	4	SC311YN24NIBA3
	2.0	0.112	0	203	116	203	116	176	NITRILE	6.5	4	SC311YN24NIBA4
	2.4	0.140	0	203	87	203	87	176	NITRILE	6.5	4	SC311YN24NIBA5
1/4	1.2	0.046	0	203	203	203	203	176	PTFE	6.5	4	SC311YN24TIBA2
	1.6	0.084	0	203	160	203	160	176	PTFE	6.5	4	SC311YN24TIBA3
	2.0	0.112	0	203	116	203	116	176	PTFE	6.5	4	SC311YN24TIBA4
	2.4	0.140	0	203	87	203	87	176	PTFE	6.5	4	SC311YN24TIBA5
1/4	1.2	0.046	0	203	203	203	203	176	FFKM	6.5	4	SC311YN24AIBA2
	1.6	0.084	0	203	160	203	160	176	FFKM	6.5	4	SC311YN24AIBA3
	2.0	0.112	0	203	116	203	116	176	FFKM	6.5	4	SC311YN24AIBA4
	2.4	0.140	0	203	87	203	87	176	FFKM	6.5	4	SC311YN24AIBA5



# SC311-1/4" NPT, Nylon, Normally Closed



## Part Numbering

1	2	3	4	5	6	7	8	9	10	11	12	13	14
<b>S</b>	<b>C</b>	<b>3</b>	<b>1</b>	<b>1</b>	<b>Y</b>	<b>N</b>	<b>2</b>	<b>4</b>	<b>V</b>	<b>I</b>	<b>B</b>	<b>A</b>	<b>5</b>
Series		Stations	Operating Mode	Housing	Coil	Voltage		Seal Material	Body Material	Pipe Size	Orifice Size		
C3 Direct Acting NPT Threads		1	1: 2Way N.C.	Y: DIN G: Leads	N: F Class	02: 120/60 04: 240/60 24: 24/60 15: 12 VDC 16: 24 VDC		V: FKM C: EPDM N: Nitrile T: PTFE A: FFKM	I: Nylon	B: 1/8"	A2: 1.2mm A3: 1.6mm A4: 2.0mm <b>A5: 2.4mm</b>		

## Coil Data

AC Coil Family	
Voltage Code	Coil Number
YN02	C944
GN02	C944L
YN04	C802
GN04	C802L
YN24	C987
GN24	C987L

DC Coil Family	
Voltage Code	Coil Number
YN15	C999
GN15	C999L
YN16	C926
GN16	C926L

## Kit Data

Operator	
Seal	Part Number
V	KSC3102VDA5
C	KSC3102CDA5
N	KSC3102NDA5
T	KSC3102TDA5
A	KSC3102ADA5