

Accessories – Varioline Enclosure LED Lights with Socket



Applications

The Varioline is a powerful and compact LED light capable of illuminating even very large enclosures in their full depth and height. Its integrated socket allows for the power connection of laptops and diagnostic devices. The glare-free, 120° rotatable light tube uses mid-power LEDs with a service life of 60,000 hours. The emitted daylight color of 6,500K provides safety for the user by a natural and non-fading color reproduction.

Features

- High luminous flux
- Integrated socket
- Integrated power unit
- Durable and maintenance-free LED technology
- Up to eight units can be daisy-chained
- On/off switch, motion sensor, connection for external door switch or unswitched
- Magnet or screw mount

Listings

- UL Recognized File E234324



LED 121 On/Off Switch and screw mount 121040-00



LED 122 Movement Sensor and magnet mount 122040-30

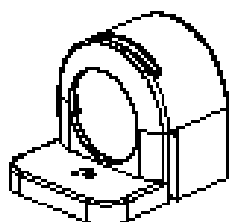
Varioline Enclosure LED Lights with Socket Specifications		
	Size 1	Size 2
Length	19.68in [500mm]	27.56in [700mm]
Power Consumption	11W Max.	16W Max.
Socket Nominal Current	15A	
Operating Voltage	AC 120V , 50/60 Hz (min. AC 110 , max. AC 130V)	
Luminosity	1,080 Lm	1,730 Lm
Lamp Type	LED	
Angle or Rotation	120°	
Light Color	Daylight	
Color Temperature	6,500 K	
Service Life	60,000 hrs. at 68°F [20°C]	
Connection	3-pole connector with snap lock; AC: max. 16A / AC 240V, color: white	
Housing	Plastic, transparent	
Mounting Hardware (screw mount only)	M5 screws, 2 lb-in max.	
Operating Temperature	-22 to 104°F [-30 to 40°C]	
Storage Temperature	-40 to 185°F [-40 to 85°C]	
Operating / Storage Humidity	Max. 90% RH (non-condensing)	
Protection Class	I (earthed)	
Protection Type	IP20	
Approvals	UL Recognized File E234324, VDE, CE	
Weight	Approx. 10.6 oz [0.3kg]	Approx. 14.1oz [0.4kg]

Accessories – Varioline Enclosure LED Lights with Socket

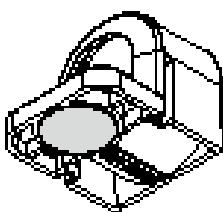


Varioline Enclosure LED Lights with Socket						
Size 1 – 19.68in [500mm]						
Magnet Mount	Price	Drawing Link	Screw Mount	Price	Drawing Link	Switch Type
121040-30	\$188.00	PDF	121040-00	\$176.00	PDF	on/off
121140-30*	\$239.00	PDF	121140-00	\$227.00	PDF	PIR motion sensor
121240-30**	\$183.00	PDF	121240-00	\$172.00	PDF	connection for external
121340-30	\$174.00	PDF	121340-00	\$163.00	PDF	no
*Approximately 5 minute fixed switch-on duration.						
** Requires plug 264090						

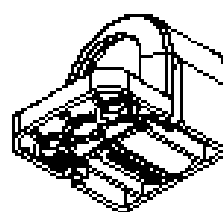
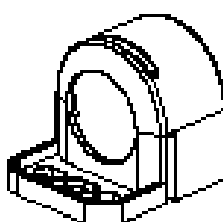
Varioline Enclosure LED Lights with Socket						
Size 2 – 27.56 [700mm]						
Magnet Mount	Price	Drawing Link	Screw Mount	Price	Drawing Link	Switch Type
122040-30	\$205.00	PDF	122040-00	\$192.00	PDF	on/off
122140-30*	\$256.00	PDF	122140-00	\$244.00	PDF	PIR motion sensor
122240-30**	\$199.00	PDF	122240-00	\$188.00	PDF	connection for external
122340-30	\$190.00	PDF	122340-00	\$179.00	PDF	no
*Approximately 5 minute fixed switch-on duration.						
** Requires plug 264090						



View of Magnet Mount



View of Screw Mount



Close up view

Accessories – Varioline Enclosure LED Lights with Socket



Power cable with input connector and wire leads



244423

Part Number	Price	Description	Length	Voltage	Color
244423	\$70.00	Connection cable 3 x 16 AWG with input connector	13.1 ft (4.0 m)	AC	Connectors: white; Cable: white

Varioline Power Input and Output Connectors

(Field Wireable)



264090



264091



264093

Part Number	Price	Description	Voltage	Color
264090	\$11.50	External Switch Connector	AC	Gray
264091	\$14.50	Input Connector		White
264093	\$16.50	Daisy Chain Connector		
*Required for External Connection Switch Varioline lights.				

Extension Cable with 2 Connectors (Input and Output) for Daisy Chain Connection



244359

Part Number	Price	Description	Length	Voltage	Color
244359	\$35.50	Extension cable 2 x 15 AWG with 2 connectors	3.2 ft (1.0 m)	AC	Connectors: white; Cable: white