

SHIMPO Handheld Tachometers

DT-100A Series Contact Tachometers

DT-100A Series Specifications	
Display Range	0.10 - 25,000 RPM with floating decimal
Accuracy	±0.06 RPM @ 0.10 - 999.9 RPM ±0.6 RPM @ 1,000.0 - 9,999.9 RPM ±0.006% of reading ±1 digit (±2 RPM max.) 10,000 - 25,000 RPM
Display	DT-105A – 5-digit 0.47 in. (12 mm) high LCD DT-107A – 5-digit 0.40 in. (10 mm) high LED
Measuring Units	Revolution: RPH, RPM; Feet: FPH, FPM; Miles: MPH; Yards: YPH, YPM; Inches: IPM; Meters: mPH, mPM; Length: m, cm, inches, feet, yards; Total Revolutions: REV
Memory System	13 readings are stored in memory and retained for 5 minutes (last, max., min., and 10 extra measurements)
Detection	Optical coupler, 60 pulses/rev.
Update Time	1 second (typical)
Power Requirement	2 AA 1.5V batteries (Approx. life - DT-105A: 65 hrs.; DT-107A: 40 hrs.)
Operating Temperature	32 - 113 °F (0 - 45 °C)
Construction	Die-cast aluminum housing
Weight	0.9 lb (400 g)
Agency Approvals	CE
Dimensions	7.2 in. L x 2.4 in. W x 1.8 in. H (182.5 mm x 60 mm x 46 mm)



Accessories

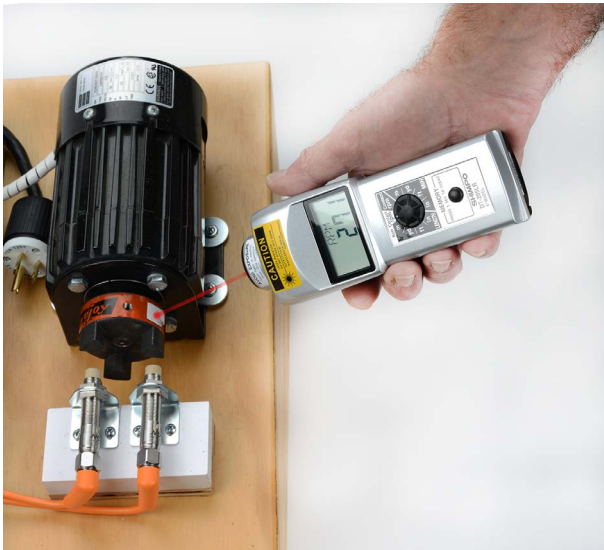
DT-100A Series Accessories		
Part Number	Description	Price
DT-CONE	Replacement standard cone adapter for Shimpo DT series handheld tachometers, 1/2 inch diameter	\$6.75
EXT-SHAFT	Replacement extension shaft for Shimpo DT series handheld tachometers, 3-1/2 inch length	\$11.50
DT-FPM-6	Replacement measuring wheel for Shimpo DT series tachometers, 6 inch circumference	\$31.50
DT-FPM-12	Measuring wheel for Shimpo DT series handheld tachometers, 12 inch circumference	\$52.00
DT-FUNNEL	Replacement standard funnel adapter for Shimpo DT series tachometers, 1/2 inch diameter	\$6.75



SHIMPO Handheld Tachometers

DT-200LR Series Combination Laser Tachometers

DT-200LR Series Specifications	
Display Range	6 - 99,999 RPM
Accuracy	±1 RPM @ 6 - 8,300 RPM ±2 RPM @ 8,300 - 25,000 RPM ±0.006% of reading ±1 digit (±6 RPM max.) 25,000 - 99,999 RPM
Display	DT-205A – 5-digit 0.47 in. (12 mm) high LCD DT-207A – 5-digit 0.40 in. (10 mm) high LED
Measuring Units	RPM (using included contact adapter) YPM, mPM, FPM, IPM, and Length: YRD, m, FT and IN Use wheel with 200L adapter
Measuring Distance	1 in. (25.4 mm) to 20 feet (6m)
Memory System	13 readings are stored in memory and retained for 5 minutes (last, max., min., and 10 extra measurements)
Detection	Laser diode / contact
Update Time	1 second (typical)
Power Requirement	2 AA 1.5V batteries (Life: Approx. 25 hrs.)
Operating Temperature	32 - 113 °F (0 - 45 °C)
Construction	Die-cast aluminum housing
Weight	0.8 lb (365 g)
Agency Approvals	CE
Dimensions	6.6 in. L x 2.4 in. W x 1.8 in. H (167.5 mm x 60 mm x 46 mm) With contact adapter: Length = 8.25 in. (209 mm)

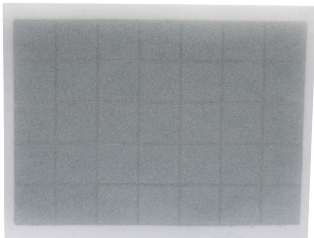


Accessories

DT-200LR Series Accessories		
Part Number	Description	Price
DT-CONE	Replacement standard cone adapter for Shimpo DT series handheld tachometers, 1/2 inch diameter	\$6.75
DT-ADP-200LR	Replacement contact adapter for Shimpo DT-205LR or DT-207LR handheld tachometers	\$73.00
EXT-SHAFT	Replacement extension shaft for Shimpo DT series handheld tachometers, 3-1/2 inch length	\$11.50
DT-FPM-6	Replacement measuring wheel for Shimpo DT series tachometers, 6 inch circumference	\$31.50
DT-FPM-12	Measuring wheel for Shimpo DT series handheld tachometers, 12 inch circumference	\$52.00
DT-FUNNEL	Replacement standard funnel adapter for Shimpo DT series tachometers, 1/2 inch diameter	\$6.75
DT-TAB	Reflective tabs, sheet of (35) 1/2-inch squares, for use with Shimpo DT-205LR, DT-207LR and PT-110 handheld tachometers	\$3.20
DT-TAPE	Replacement reflective tape strip, 1 x 7-3/4 inch, for use with Shimpo DT-205LR, DT-207LR and PT-110 handheld tachometers	\$2.60



DT-FPM-12



DT-TAB



DT-CONE



DT-FPM-6



DT-ADP-200LR



DT-FUNNEL



DT-TAPE



EXT-SHAFT

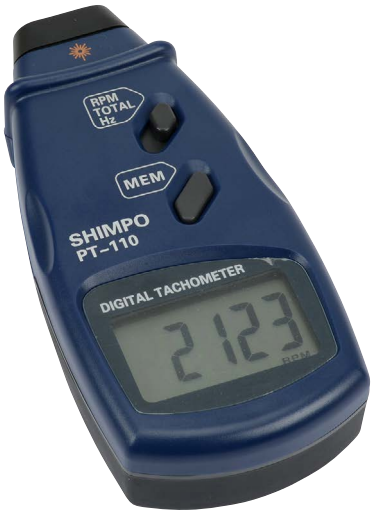
SHIMPO Handheld Tachometers

PT-110 Non-Contact Laser Tachometer

The Shimpo Model PT-110 Non-Contact Laser Tachometer is a simple-to-use, ergonomic, rugged test instrument that operates with optical laser technology. This velocity analyzing and measuring device is ideal for rotational machine inspection and process speed analysis. The PT-110 features a large backlit LCD screen that provides clear viewing in any environment. Users can obtain results in either Hertz or RPM, as well as Total counts with the simple selection switch. During testing, the unit automatically saves maximum, minimum, last recorded values and up to 96 logged data readings. The compact, lightweight PT-110 Tachometer comes standard with reflective tape, 3 AAA batteries and protective carrying case.

Features

- Measures RPM, Hz or Total by simple adjusting selector switch
- Lightweight, ergonomic design allows comfortable long term usage
- Large, backlit LCD for easy viewing in both bright and dim environments
- Automatically records Maximum, Minimum, Last Value as well as up to 96 data points during testing. Quickly review after testing by pushing the MEM button.
- Laser operation shows point of measurement for easy aiming on equipment



PT-110

PT-110 Specifications	
Display Range	2.5 - 99,999 RPM; 0.05 - 1666 Hz; 1 - 99999 Count
Resolution	0.1 RPM (2.5 - 999.9 RPM) 1 RPM (above 1000 RPM) 0.01 Hz (0.05 - 99.99 Hz) 0.1 Hz (above 100 Hz)
Display	5 digit, 0.7 in. (18 mm) LCD
Accuracy	± 0.05% + 1 digit
Sampling Time	0.8 second (over 60 RPM)
Detection	Laser
Measuring Distance	2 - 20 in. (50 - 500 mm)
Memory	Automatically stores Maximum (UP), Minimum (DN), last value (LA) and up to 96 readings for review. Maximum speed for reading storage is every 0.8 seconds.
Dimensions	6.1 in. L x 2.8 in. W x 1.4 in. H (155 mm x 70 mm x 35 mm)
Power	(3) AAA 1.5V batteries
Enclosure	ABS plastic housing
Operating Temperature	32 - 104 °F (0 - 40 °C)
Weight	0.4 lb (181 g)
Agency Approvals	N/A
Included Accessories	(3) AAA alkaline batteries, protective carrying case, reflective tape.

PT-110 Handheld Tachometer		
Part Number	Description	Price
PT-110	Handheld tachometer, non-contact, 5-digit LCD display	\$110.00



PT-110 Accessories		
Part Number	Description	Price Each
DT-TAB	Reflective tabs, sheet of (35) 1/2-inch squares, for use with Shimpo DT-205LR, DT-207LR and PT-110 handheld tachometers	\$3.20
DT-TAPE	Replacement reflective tape strip, 1 x 7-3/4 inch, for use with Shimpo DT-205LR, DT-207LR and PT-110 handheld tachometers	\$2.60