

SureStep[®] Stepping System Accessories

SureStep[®] Microstepping Drives Accessories

Braking Accessories

If you plan to use a regulated or switching power supply, you might encounter problems from regeneration. As a load rapidly decelerates from a high speed, much of the kinetic energy of that load is transferred back to the motor. This energy is then pushed back to the drive and power supply, resulting in increased system voltage. If there is enough overhauling load on the motor, the DC voltage will go above the drive and/or power supply limits.

This can trip the overvoltage protection of a switching power supply or a drive, and cause it to shut down.

To solve this problem, AutomationDirect offers a regeneration clamp and a braking resistor as optional accessories. The regen clamp has a built-in 50W braking resistor. For additional braking power (larger overhauling loads), an optional 100W braking resistor is also available.

Regeneration Clamp Description

As with most stepper systems, a clamp circuit is often required to limit increased power supply bus voltage when the motor is decelerating under load. This is commonly referred to as “regeneration,” which is what happens when DC motors are driven by their load. During regeneration, the DC motor can produce enough voltage to actually exceed the input power supply voltage.

With a Regen Clamp, one or more stepper drives can be protected from “Over Voltage” conditions by placing the clamp module between the power supply and the drive. The clamp tracks the input power supply, and will operate from 24 to 80 volts. No adjustments are needed.

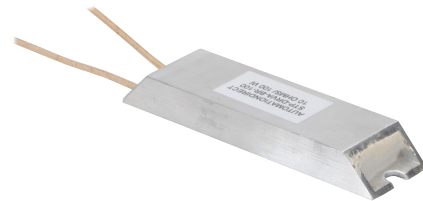
The Regen Clamp is designed to handle a wide range of conditions. The voltage input matches the needs of the SureStep stepper drives by providing 24 to 80 VDC capabilities, and external power resistors can be added for even greater continuous power requirements. The clamp modules are small and compact to minimize impact on the system design. More than one stepper drive can be connected to the clamp module with the potential to handle an entire multi-axis system.

Replacement Encoder

The STP-MTRA-ENC1 is a replacement for the encoder that comes standard with the STP-MTRD-17038E, STP-MTRD-23042E, and STP-MTRD-23065E integrated motor/drives. Installation tool and mounting hardware is included. For more information and details on how to wire the STP-MTRA-ENC1, please see the SureStep User Manual.



Regeneration Clamp



Braking Resistor

Regeneration Clamp Features

- Built-in 50W power resistor for more continuous current handling (optional 100W resistor is also available)
- Mounted on a heat sink
- Voltage range: 24–80 VDC; no user adjustments required
- Power: 50W continuous; 800W peak
- Wire connection: 6-pin screw terminal block; 12–18 AWG wire.
- Indicators (LED):
 - Green = power supply voltage is present
 - Red = clamp is operating (usually when stepper is decelerating)
- Protection: The external power supply is internally connected to an “Input Diode” in the regen clamp that protects the power supply from high regeneration voltages. This diode protects the system from connecting the power supply in reverse. If the clamp circuit fails, the diode will continue to protect the power supply from over-voltage.
- RoHS

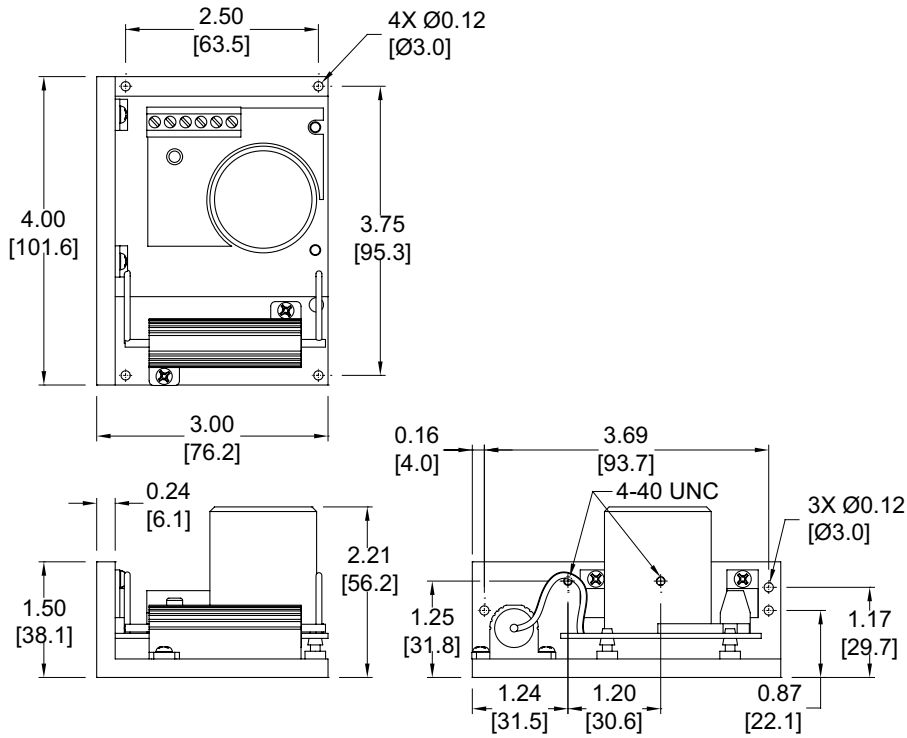
Sure Step Series Specifications – Microstepping Drives Optional Accessories		
Part Number	Price	Description
STP-DRVA-RC-050 *	\$89.00	Regen Clamp: use with DC-powered stepper & servo drives; 50W, 24–80 VDC
STP-DRVA-BR-100	\$64.00	Braking Resistor: use with STP-DRV-RC-050 regen clamp; 100W, 10Ω
STP-MTRA-ENC1	\$85.00	Replacement encoder: use with STP-MTRD-xxxxxE models, 5VDC, line driver (differential) output, 1000 ppr. Installation tool and mounting hardware included.
* Do not use the regeneration clamp in an atmosphere containing corrosive gases.		

SureStep[®] Stepping System Accessories

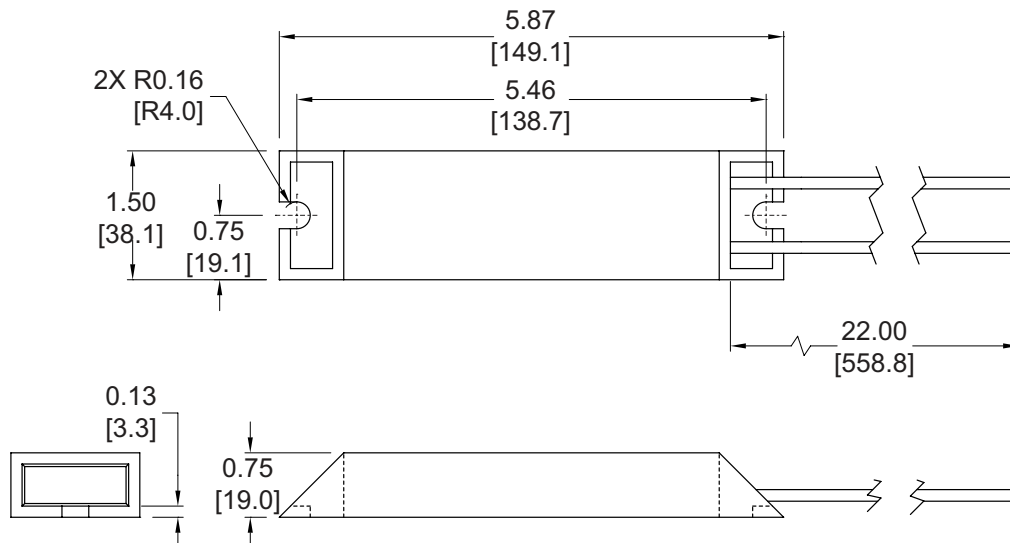
SureStep[®] Microstepping Drives Accessories

Dimensions = in [mm]

STP-DRVA-RC-050



STP-DRVA-BR-100



SureStep[®] Stepping System Accessories

SureStep[®] Microstepping Drives Accessories

USB to RS-485 Adapter

The STP-USB485-4W is a USB to RS-232/RS-485 converter that can be used in 2-wire or 4-wire serial networks. Serial communication can be wired up via the 9-pin D-sub connector or through the 6-screw terminals.

The STP-USB485-4W can be set for several different configurations. These modes are set up by the 4 DIP switches on the outside of the case (RS-232/RS-485, full/half duplex) and by the 7 jumpers located inside the case (termination/bias resistors).

SureStep Advanced Drives communicate via RS-232 (for control and for configuration via SureMotion Pro).

The Advanced Integrated motor/drives use RS-485. While the Advanced Integrated motor/drives can be wired for either 2- or 4-wire networks, 4-wire is required for use with SureMotion Pro due to the Firmware Download utility and the Status Monitor Screen.

Depending on the host controller's RS-485 implementation, either 2- or 4-wire RS-485 can be used for control. All RS-485 PLCs that have 2-wire capability (Productivity, BRX, Click, DirectLogic, etc.) can control the Advanced Integrated steppers.



SureStep PC Adapter - STP-USB485-4W	
Price	\$99.00
Communications	2-wire RS-232 2- or 4-wire RS-485
Configure With	Internal jumpers and external DIP switches
Compatible Cables	STP-232RJ11-CBL STP-485DB9-CBL-2 USB

Dimensions = in [mm]

