



# Precision Servo Gearboxes

SureGear® Servo Gearbox Selection													
SureServoMotor (SV and SV2)	Gear Ratio	SureGear Gearbox	Frame Size (mm)	Motor Nominal Output Torque		Combo Nominal Output Torque		Nominal Output Speed (rpm)	Max Output Speed (rpm)	Available Load Inertia @ 5:1 Mismatch *			
				N-m	lb-in	N-m	lb-in			kg-cm2	lb-in-s2		
SV2L-201(B)	5:1	<a href="#">PGD047-05A1</a>	47	0.32	2.83	1.52	13.44	600	1200.00	6.76	0.006		
		<a href="#">PGA050-05A1</a>	50							6.94	0.006		
		<a href="#">PGA070-05A1</a>	70							5.91	0.005		
		<a href="#">PGB070-05A1</a>	70							1.59**	0.001**		
	10:1	<a href="#">PGD047-10A1</a>	47			3.04	26.89			300	600.00	28.15	0.025
		<a href="#">PGA050-10A1</a>	50									28.35	0.025
		<a href="#">PGA070-10A1</a>	70									25.75	0.023
		<a href="#">PGB070-10A1</a>	70									2.98	0.007**
	15:1	<a href="#">PGA050-15A1</a>	50			4.32	38.21	200	400.00			62.66	0.055
		<a href="#">PGA070-15A1</a>	70									58.16	0.051
		<a href="#">PGB070-15A1</a>	70									4.22	0.048
	25:1	<a href="#">PGD047-25A1</a>	47			7.20	63.68					120	240.00
		<a href="#">PGA050-25A1</a>	50							174.69	0.155		
		<a href="#">PGA070-25A1</a>	70							162.81	0.144		
		<a href="#">PGB070-25A1</a>	70					7.04	0.134				
	50:1	<a href="#">PGD064-50A1</a>	64			14.40	127.35	60	120.00	661.25	0.585		
SV2L-202(B)	5:1	<a href="#">PGD064-05A2</a>	64	0.64	5.7	3.04	27.08	600	1200.00	28.75	0.025		
		<a href="#">PGA070-05A2</a>	70							29.33	0.026		
		<a href="#">PGB070-05A2</a>	70							2.98	0.022		
	10:1	<a href="#">PGD064-10A2</a>	64			6.08	54.15			300	600.00	118.80	0.105
		<a href="#">PGA070-10A2</a>	70									119.40	0.106
		<a href="#">PGB070-10A2</a>	70									5.95	0.090
	15:1	<a href="#">PGA070-15A2</a>	70			8.64	76.95	200	400.00			268.88	0.238
		<a href="#">PGB070-15A2</a>	70									264.83	0.234
		<a href="#">PGB090-15A2</a>	90									204.75	0.181
	25:1	<a href="#">PGD064-25A2</a>	64			14.40	128.25			120	240.00	747.50	0.662
		<a href="#">PGA070-25A2</a>	70									748.13	0.662
		<a href="#">PGB070-25A2</a>	70									14.08	0.652
		<a href="#">PGB090-25A2</a>	90					581.25	0.514				
	50:1	<a href="#">PGD090-25A2</a>	90			14.40	128.25	60	120.00			700.00	0.620
		<a href="#">PGD090-50A2</a>	90			28.80	256.50					2875.00	2.544
		<a href="#">PGD110-50A2</a>	110			2125.00	1.881						
SV2L-204(B)	5:1	<a href="#">PGD064-05A2</a>	64	1.27	11.2	6.03	53.20	600	1200.00			53.75	0.048
		<a href="#">PGA070-05A2</a>	70							54.33	0.048		
		<a href="#">PGB070-05A2</a>	70							5.91	0.044		
	10:1	<a href="#">PGD064-10A2</a>	64			12.07	106.40			300	600.00	218.80	0.194
		<a href="#">PGA070-10A2</a>	70									219.40	0.194
		<a href="#">PGB070-10A2</a>	70									11.81	0.179
	15:1	<a href="#">PGA070-15A2</a>	70			17.15	151.20	200	400.00			493.88	0.437
		<a href="#">PGB070-15A2</a>	70									489.83	0.433
		<a href="#">PGB090-15A2</a>	90									16.76	0.380
	25:1	<a href="#">PGD064-25A2</a>	64			28.58	252.00			120	240.00	1372.50	1.215
		<a href="#">PGA070-25A2</a>	70									1373.13	1.215
		<a href="#">PGB070-25A2</a>	70									27.94	1.205
		<a href="#">PGB090-25A2</a>	90					1206.25	1.068				
	50:1	<a href="#">PGD090-25A2</a>	90			28.58	252.00	60	120.00			1325.00	1.173
		<a href="#">PGD090-50A2</a>	90			57.15	504.00					5375.00	4.757
		<a href="#">PGD110-50A2</a>	110			4625.00	4.093						

\* Available load inertia is calculated based on servo motor inertia using the formula: Available Inertia = (5 x Motor Inertia – Gearbox Inertia) x (Gear Ratio)2 A 5:1 inertia mismatch is a good target for design purposes. Systems with lower or higher mismatch may be possible, depending on operating conditions.

\*\* This gearbox is NOT a suitable choice at a 5:1 mismatch. If inertia balancing is a selection criteria for your end use, please use a mismatch of 8:1 to 10:1.



# Precision Servo Gearboxes

SureGear® Servo Gearbox Selection											
Sure Servo Motor	Gear Ratio	SureGear Gearbox	Frame Size (mm)	Motor Nominal Output Torque		Combo Nominal Output Torque		Nominal Output Speed (rpm)	Max Output Speed (rpm)	Available Load Inertia @ 5:1 Mismatch *	
				N-m	lb-in	N-m	lb-in			kg-cm2	lb-in-s2
SV2L-207(B)	5:1	<a href="#">PGA070-05A3</a>	70	2.39	21.2	11.35	100.70	600	1200.00	186.83	0.165
		<a href="#">PGB090-05A3</a>	90			11.11	98.58			143.75	0.127
		<a href="#">PGD090-05A3</a>	90			11.35	100.70			174.25	0.154
	10:1	<a href="#">PGA090-10A3</a>	90			22.71	201.40	300	600.00	726.00	0.643
		<a href="#">PGB090-10A3</a>	90			22.23	197.16			586.00	0.519
		<a href="#">PGD090-10A3</a>	90			22.71	201.40			722.00	0.639
	15:1	<a href="#">PGA090-15A3</a>	90			32.27	286.20	200	400.00	1669.50	1.478
		<a href="#">PGB090-15A3</a>	90			31.55	279.84			1622.25	1.436
		<a href="#">PGA090-25A3</a>	90			53.78	477.00			4643.75	4.110
	25:1	<a href="#">PGB090-25A3</a>	90			52.58	466.40	120	240.00	4518.75	3.999
		<a href="#">PGD110-25A3</a>	110			53.78	477.00			4281.25	3.789
		<a href="#">PGD110-50A3</a>	110			107.55	954.00			17875.00	15.819
SV2L-210(B)	5:1	<a href="#">PGA090-05A4</a>	90	3.18	28.15	15.11	133.69	600	1000.00	321.25	0.284
		<a href="#">PGB090-05A4</a>	90			14.79	130.88			286.25	0.253
		<a href="#">PGD090-05A4</a>	90			15.11	133.69			319.25	0.283
	10:1	<a href="#">PGA090-10A4</a>	90			30.21	267.38	300	500.00	1296.00	1.147
		<a href="#">PGB090-10A4</a>	90			29.57	261.75			1156.00	1.023
		<a href="#">PGD090-10A4</a>	90			30.21	267.38			1292.00	1.143
	15:1	<a href="#">PGA120-15A4</a>	120			42.93	379.96	200	333.33	2884.50	2.553
		<a href="#">PGB120-15A4</a>	120			41.98	371.52			2475.00	2.190
		<a href="#">PGD110-25A4</a>	110			71.55	633.27			7843.75	6.942
	25:1	<a href="#">PGA120-25A4</a>	120			69.96	619.20	120	200.00	8043.75	7.119
		<a href="#">PGB120-25A4</a>	120			69.96	619.20			6918.75	6.123
		<a href="#">PGD110-50A4</a>	110			143.10	1266.54			32125.00	28.431
SV2M-210(B)	5:1	<a href="#">PGA090-05A5</a>	90	4.77	42.22	22.66	200.54	400.00	600.00	1041.25	0.922
		<a href="#">PGD090-05A5</a>	90			22.18	196.31			1039.25	0.920
		<a href="#">PGB120-05A5</a>	120			22.18	196.31			925.75	0.819
	10:1	<a href="#">PGA090-10A5</a>	90			45.32	401.07	200.00	300.00	4176.00	3.696
		<a href="#">PGD110-10A5</a>	110			44.36	392.63			4172.00	3.692
		<a href="#">PGB120-10A5</a>	120			44.36	392.63			3759.00	3.327
	15:1	<a href="#">PGA120-15A5</a>	120			64.40	569.94	133.33	200.00	9364.50	8.288
		<a href="#">PGB120-15A5</a>	120			62.96	557.28			8955.00	7.925
		<a href="#">PGD110-25A5</a>	110			107.33	949.91			25843.75	22.872
	25:1	<a href="#">PGA120-25A5</a>	120			104.94	928.80	80.00	120.00	26043.75	23.049
		<a href="#">PGB120-25A5</a>	120			104.94	928.80			24918.75	22.053
		<a href="#">PGD110-35A5</a>	110			150.26	1329.87			50653.75	44.829

\* Available load inertia is calculated based on servo motor inertia using the formula: Available Inertia = (5 x Motor Inertia – Gearbox Inertia) x (Gear Ratio)<sup>2</sup> A 5:1 inertia mismatch is a good target for design purposes. Systems with lower or higher mismatch may be possible, depending on operating conditions.



# Precision Servo Gearboxes

SureGear® Servo Gearbox Selection													
Sure Servo Motor	Gear Ratio	SureGear Gearbox	Frame Size (mm)	Motor Nominal Output Torque		Combo Nominal Output Torque		Nominal Output Speed (rpm)	Max Output Speed (rpm)	Available Load Inertia @ 5:1 Mismatch *			
				N-m	lb-in	N-m	lb-in			kg-cm2	lb-in-s2		
SV2M-215(B)	5:1	<a href="#">PGA090-05A5</a>	90	7.16	63.37	34.01	301.01	400.00	600.00	1390.00	1.230		
		<a href="#">PGD090-05A5</a>	90							1388.00	1.228		
		<a href="#">PGB120-05A5</a>	120							1274.50	1.128		
	10:1	<a href="#">PGA090-10A5</a>	90			68.02	602.03	200.00	300.00	5571.00	4.930		
		<a href="#">PGD110-10A5</a>	110							5567.00	4.927		
		<a href="#">PGB120-10A5</a>	120							5154.00	4.561		
	15:1	<a href="#">PGA120-15A5</a>	120			96.66	855.51	133.33	200.00	12503.25	11.065		
		<a href="#">PGB120-15A5</a>	120							12093.75	10.703		
		<a href="#">PGD110-25A5</a>	110							34562.50	30.588		
	25:1	<a href="#">PGA120-25A5</a>	120			161.10	1425.86	80.00	120.00	34762.50	30.765		
		<a href="#">PGB120-25A5</a>	120							33637.50	29.769		
		<a href="#">PGD110-35A5</a>	110							225.54	1996.20	57.14	85.71
SV2M-220(B)	5:1	<a href="#">PGD110-05A6</a>	110	9.55	84.52	45.36	401.49	400.00	600.00	4280.00	3.788		
		<a href="#">PGA120-05A6</a>	120							4297.50	3.803		
		<a href="#">PGB120-05A6</a>	120							4212.00	3.728		
		<a href="#">PGB155-05A6</a>	155							3914.75	3.465		
	10:1	<a href="#">PGD110-10A6</a>	110			90.73	802.98	200.00	300.00	17240.00	15.257		
		<a href="#">PGA120-10A6</a>	120							17255.00	15.271		
		<a href="#">PGB120-10A6</a>	120							16904.00	14.960		
		<a href="#">PGB155-10A6</a>	155							15884.00	14.057		
	15:1	<a href="#">PGA155-15A6</a>	155			128.93	1141.08	133.33	200.00	38745.00	34.289		
		<a href="#">PGB155-15A6</a>	155							126.06	1115.73	37597.50	33.274
	25:1	<a href="#">PGA155-25A6</a>	155			214.88	1901.80	80.00	120.00	107750.00	95.359		
		<a href="#">PGB155-25A6</a>	155							210.10	1859.54	104593.75	92.565
SV2M-230(B)	5:1	<a href="#">PGD110-05A6</a>	110	17.55	155.33	83.36	737.80	340.00	600.00	6817.50	6.033		
		<a href="#">PGA120-05A6</a>	120							6835.00	6.049		
		<a href="#">PGB120-05A6</a>	120							6749.50	5.973		
		<a href="#">PGB155-05A6</a>	155							6452.25	5.710		
	10:1	<a href="#">PGD110-10A6</a>	110			166.73	1475.68	170.00	300.00	27390.00	24.240		
		<a href="#">PGA120-10A6</a>	120							27405.00	24.253		
		<a href="#">PGB120-10A6</a>	120							163.22	1444.62	27054.00	23.943
		<a href="#">PGB155-10A6</a>	155							26034.00	23.040		
	15:1	<a href="#">PGA155-15A6</a>	155			236.93	2097.01	113.33	200.00	61582.50	54.501		
		<a href="#">PGB155-15A6</a>	155							231.66	2050.36	60435.00	53.485
	25:1	<a href="#">PGA155-25A6</a>	155			394.88	3494.98	68.00	120.00	171187.50	151.501		
		<a href="#">PGB155-25A6</a>	155							386.10	3417.27	168031.25	148.708

\* Available load inertia is calculated based on servo motor inertia using the formula: Available Inertia = (5 x Motor Inertia – Gearbox Inertia) x (Gear Ratio)<sup>2</sup> A 5:1 inertia mismatch is a good target for design purposes. Systems with lower or higher mismatch may be possible, depending on operating conditions.



# Precision Servo Gearboxes

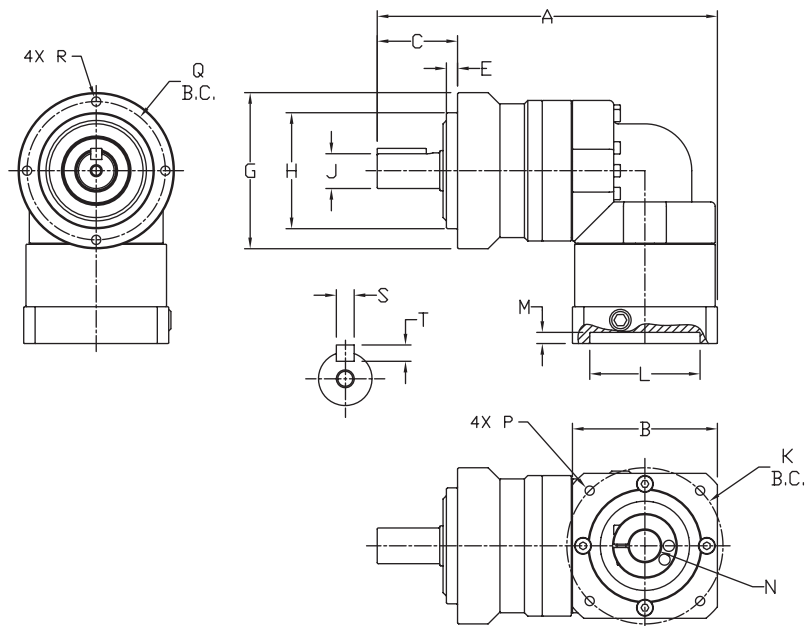
## Pricing & Specifications – Right-Angle Shaft PGB Series

SureGear® Precision Servo Gearboxes – Right-Angle Shaft PGB Series																		
Part Number	Price	Frame Size (mm)	Ratio	Reduction	Nominal Output Torque (N·m [lb-in])	Max. Acceleration Torque (N·m [lb-in])	Emergency Stop Torque (N·m [lb-in])	Backlash (arc-min)	Nominal Input Speed (rpm)	Max. Input Speed (rpm)	Allowable Radial Load (N [lb])	Allowable Thrust Load (N [lb])	Moment of Inertia (kg-cm <sup>2</sup> )	Efficiency (%)	Max. Housing Temperature	Approx Weight (kg [lb])	Environmental Rating	Fits SureServo Servo Motor (SV & SV2)
<a href="#">PGB070-05A1</a>	\$788.00	70	5:1	double	22 [195]	40 [354]	80 [708]	6	3000	6000	510 [115]	390 [88]	0.250	90 °C [194 °F]	1.9 [4.2]	IP55	SV(2)L-201(B)	
<a href="#">PGB070-10A1</a>	\$788.00		10:1	double	16 [142]	32 [283]	65 [575]				9	640 [144]	530 [119]					0.230
<a href="#">PGB070-15A1</a>	\$997.00		15:1	triple	16 [142]	32 [283]	65 [575]	6				740 [166]	630 [142]					0.073
<a href="#">PGB070-25A1</a>	\$997.00		25:1	triple	24 [212]	45 [398]	90 [797]				9	870 [196]	790 [178]					0.071
<a href="#">PGB070-05A2</a>	\$788.00		5:1	double	22 [195]	40 [354]	80 [708]	6				510 [115]	390 [88]					0.320
<a href="#">PGB070-10A2</a>	\$788.00		10:1	double	16 [142]	32 [283]	65 [575]				9	640 [144]	530 [119]					0.300
<a href="#">PGB070-15A2</a>	\$997.00		15:1	triple	16 [142]	32 [283]	65 [575]	6				740 [166]	630 [142]					0.118
<a href="#">PGB070-25A2</a>	\$997.00		25:1	triple	24 [212]	45 [398]	90 [797]				9	870 [196]	790 [178]					0.115
<a href="#">PGB090-15A2</a>	\$1,217.00	90	15:1	triple	45 [398]	65 [575]	170 [1505]	9	1400 [314]	1900 [427]		0.410	90 °C [194 °F]	4.3 [9.5]	IP55	SV(2)L-202(B) SV(2)L-204(B)		
<a href="#">PGB090-25A2</a>	\$1,217.00		25:1	triple	65 [575]	110 [974]	220 [1947]		6	1600 [360]	2200 [495]	0.400						
<a href="#">PGB090-05A3</a>	\$932.00		5:1	double	65 [575]	90 [797]	220 [1947]	9		960 [216]	1200 [270]	2.130						
<a href="#">PGB090-10A3</a>	\$932.00		10:1	double	45 [398]	65 [575]	170 [1505]		6	1200 [270]	1600 [360]	2.020						
<a href="#">PGB090-15A3</a>	\$1,217.00		15:1	triple	45 [398]	65 [575]	170 [1505]	9		1400 [314]	1900 [427]	0.600						
<a href="#">PGB090-25A3</a>	\$1,217.00		25:1	triple	65 [575]	110 [974]	220 [1947]		6	1600 [360]	2200 [495]	0.590						
<a href="#">PGB090-05A4</a>	\$932.00		5:1	double	65 [575]	90 [797]	220 [1947]	9		960 [216]	1200 [270]	4.260						
<a href="#">PGB090-10A4</a>	\$932.00		10:1	double	45 [398]	65 [575]	170 [1505]		6	1200 [270]	1600 [360]	4.150						
<a href="#">PGB120-15A4</a>	\$1,512.00	120	15:1	triple	110 [974]	200 [1770]	450 [3983]	9		2300 [517]	3000 [674]	4.700	90 °C [194 °F]	10 [22]	IP55	SV(2)L-210(B)		
<a href="#">PGB120-25A4</a>	\$1,512.00		25:1	triple	150 [1328]	300 [2655]	550 [4868]		6	2700 [607]	3700 [832]	4.640						
<a href="#">PGB120-05A5</a>	\$1,217.00		5:1	double	120 [1062]	240 [2124]	500 [4425]	9		1600 [360]	1900 [427]	6.610						
<a href="#">PGB120-10A5</a>	\$1,217.00		10:1	double	110 [974]	200 [1770]	450 [3983]		6	2000 [450]	2500 [562]	6.050						
<a href="#">PGB120-15A5</a>	\$1,512.00		15:1	triple	110 [974]	200 [1770]	450 [3983]	9		2300 [517]	3000 [674]	4.700						
<a href="#">PGB120-25A5</a>	\$1,512.00		25:1	triple	150 [1328]	300 [2655]	550 [4868]		6	2700 [607]	3700 [832]	4.640						
<a href="#">PGB120-05A6</a>	\$1,217.00		5:1	double	120 [1062]	240 [2124]	500 [4425]	9		1600 [360]	1900 [427]	13.690						
<a href="#">PGB120-10A6</a>	\$1,217.00		10:1	double	110 [974]	200 [1770]	450 [3983]		6	2000 [450]	2500 [562]	13.120						
<a href="#">PGB155-15A6</a>	\$1,770.00	155	15:1	triple	200 [1770]	400 [3540]	750 [6638]	9		5400 [1214]	4900 [1102]	15.070	90 °C [194 °F]	20.4 [45.0]	IP55	SV(2)M-220(B)		
<a href="#">PGB155-25A6</a>	\$1,770.00		25:1	triple	300 [2655]	600 [5310]	1100 [9736]		6	6400 [1439]	6100 [1371]	14.820						
<a href="#">PGB155-05A6</a>	\$1,401.00		5:1	double	200 [1770]	400 [3540]	1100 [9736]	9		3800 [854]	3000 [674]	21.280						
<a href="#">PGB155-10A6</a>	\$1,401.00		10:1	double	200 [1770]	400 [3540]	750 [6638]		6	4700 [1057]	4100 [922]	19.030						



# Precision Servo Gearboxes

## Dimensions – Right-Angle Shaft PGB Series



SureGear PGB Series Right-Angle Shaft Gearboxes Dimension Drawing

SureGear® Precision Servo Gearbox Dimensions – Right-Angle Shaft PGA Series ( dimensions = mm [in] )																
Part Number	A	B	C	E	G	H	J	K	L	M	N	P	Q	R	S	T
PGB070-05A1	151.5 [5.96]	52.0 [2.05]	36.0 [1.42]	5.0 [0.20]	Ø70.0 [Ø2.76]	Ø52.0 [Ø2.05]	Ø16.0 [Ø0.63]	Ø46.0 [Ø1.81]	Ø30.0 [Ø1.18]	5.0 [0.20]	Ø8.0 [Ø0.31]	M4-0.7x9	Ø62.0 [Ø2.44]	M5-0.8x10	5.0 [0.20]	5.0 [0.20]
PGB070-10A1																
PGB070-05A2	151.5 [5.96]	65.0 [2.56]	36.0 [1.42]	5.0 [0.20]	Ø70.0 [Ø2.76]	Ø52.0 [Ø2.05]	Ø16.0 [Ø0.63]	Ø70.0 [Ø2.76]	Ø50.0 [Ø1.97]	5.0 [0.20]	Ø14.0 [Ø0.55]	M5-0.8x11	Ø62.0 [Ø2.44]	M5-0.8x10	5.0 [0.20]	5.0 [0.20]
PGB070-10A2																
PGB070-15A1	158.0 [6.22]	52.0 [2.05]	36.0 [1.42]	5.0 [0.20]	Ø70.0 [Ø2.76]	Ø52.0 [Ø2.05]	Ø16.0 [Ø0.63]	Ø46.0 [Ø1.81]	Ø30.0 [Ø1.18]	5.0 [0.20]	Ø8.0 [Ø0.31]	M4-0.7x9	Ø62.0 [Ø2.44]	M5-0.8x10	5.0 [0.20]	5.0 [0.20]
PGB070-25A1																
PGB070-15A2	163.5 [6.44]	65.0 [2.56]	36.0 [1.42]	5.0 [0.20]	Ø70.0 [Ø2.76]	Ø52.0 [Ø2.05]	Ø16.0 [Ø0.63]	Ø70.0 [Ø2.76]	Ø50.0 [Ø1.97]	5.0 [0.20]	Ø14.0 [Ø0.55]	M5-0.8x11	Ø62.0 [Ø2.44]	M5-0.8x10	5.0 [0.20]	5.0 [0.20]
PGB070-25A2																
PGB090-15A2	204.5 [8.05]	80.0 [3.15]	46.0 [1.81]	7.0 [0.28]	Ø90.0 [Ø3.54]	Ø68.0 [Ø2.68]	Ø22.0 [Ø0.87]	Ø90.0 [Ø3.54]	Ø70.0 [Ø2.76]	6.0 [0.24]	Ø19.0 [Ø0.75]	M6-1.0x13	Ø80.0 [Ø3.15]	M6-1.0x12	6.0 [0.24]	6.0 [0.24]
PGB090-25A2																
PGB090-05A3	205.5 [8.09]	80.0 [3.15]	46.0 [1.81]	7.0 [0.28]	Ø90.0 [Ø3.54]	Ø68.0 [Ø2.68]	Ø22.0 [Ø0.87]	Ø90.0 [Ø3.54]	Ø70.0 [Ø2.76]	6.0 [0.24]	Ø19.0 [Ø0.75]	M6-1.0x13	Ø80.0 [Ø3.15]	M6-1.0x12	6.0 [0.24]	6.0 [0.24]
PGB090-10A3																
PGB090-05A4	205.5 [8.09]	100.0 [3.94]	46.0 [1.81]	7.0 [0.28]	Ø90.0 [Ø3.54]	Ø68.0 [Ø2.68]	Ø22.0 [Ø0.87]	Ø115.0 [Ø4.53]	Ø95.0 [Ø3.74]	6.0 [0.24]	Ø19.0 [Ø0.75]	M6-1.0x13	Ø80.0 [Ø3.15]	M6-1.0x12	6.0 [0.24]	6.0 [0.24]
PGB090-10A4																
PGB120-15A4	272.0 [10.71]	130.0 [5.12]	70.0 [2.76]	9.0 [0.35]	Ø120.0 [Ø4.72]	Ø90.0 [Ø3.54]	Ø32.0 [Ø1.26]	Ø145.0 [Ø5.71]	Ø110.0 [Ø4.33]	8.0 [0.31]	Ø22.0 * [Ø0.87]	M8-1.25x17	Ø108.0 [Ø4.25]	M8-1.25x16	10.0 [0.39]	8.0 [0.31]
PGB120-25A4																
PGB120-05A5	266.0 [10.47]	130.0 [5.12]	70.0 [2.76]	9.0 [0.35]	Ø120.0 [Ø4.72]	Ø90.0 [Ø3.54]	Ø32.0 [Ø1.26]	Ø145.0 [Ø5.71]	Ø110.0 [Ø4.33]	8.0 [0.31]	Ø22.0 * [Ø0.87]	M8-1.25x17	Ø108.0 [Ø4.25]	M8-1.25x16	10.0 [0.39]	8.0 [0.31]
PGB120-10A5																
PGB120-15A5	272.0 [10.71]	130.0 [5.12]	70.0 [2.76]	9.0 [0.35]	Ø120.0 [Ø4.72]	Ø90.0 [Ø3.54]	Ø32.0 [Ø1.26]	Ø145.0 [Ø5.71]	Ø110.0 [Ø4.33]	8.0 [0.31]	Ø22.0 * [Ø0.87]	M8-1.25x17	Ø108.0 [Ø4.25]	M8-1.25x16	10.0 [0.39]	8.0 [0.31]
PGB120-25A5																
PGB120-05A6	268.5 [10.57]	180.0 [7.09]	97.0 [3.82]	12.0 [0.47]	Ø155.0 [Ø6.10]	Ø120.0 [Ø4.72]	Ø40.0 [Ø1.57]	Ø200.0 [Ø7.87]	Ø114.0 [Ø4.50]	8.0 [0.31]	Ø35.0 * [Ø1.38]	M12-1.75x25	Ø140.0 [Ø5.51]	M10-1.5x20	12.0 [0.47]	8.0 [0.31]
PGB120-10A6																
PGB155-05A6	341.0 [13.43]	180.0 [7.09]	97.0 [3.82]	12.0 [0.47]	Ø155.0 [Ø6.10]	Ø120.0 [Ø4.72]	Ø40.0 [Ø1.57]	Ø200.0 [Ø7.87]	Ø114.0 [Ø4.50]	8.0 [0.31]	Ø35.0 * [Ø1.38]	M12-1.75x25	Ø140.0 [Ø5.51]	M10-1.5x20	12.0 [0.47]	8.0 [0.31]
PGB155-10A6																
PGB155-15A6	364.0 [14.33]	180.0 [7.09]	97.0 [3.82]	12.0 [0.47]	Ø155.0 [Ø6.10]	Ø120.0 [Ø4.72]	Ø40.0 [Ø1.57]	Ø200.0 [Ø7.87]	Ø114.0 [Ø4.50]	8.0 [0.31]	Ø35.0 * [Ø1.38]	M12-1.75x25	Ø140.0 [Ø5.51]	M10-1.5x20	12.0 [0.47]	8.0 [0.31]
PGB155-25A6																

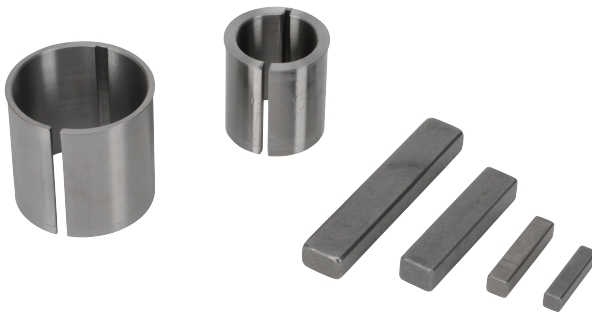
\* Dimension with supplied bushing

NOTE: See our website: [www.AutomationDirect.com](http://www.AutomationDirect.com) for complete engineering drawings.



# Precision Servo Gearboxes

## SureGear® Servo Gearbox Replacement Parts



SureGear® Precision Servo Gearboxes – Replacement Parts		
Part Number	Price	Description
<b><u>PG050-KEY</u></b>	\$4.50	Output Shaft Key, replacement, 4 x 4 x 14 mm, for SureGear PGA050 series gearboxes.
<b><u>PG070-KEY</u></b>	\$4.50	Output Shaft Key, replacement, 5 x 5 x 22 mm, for SureGear PGA070 and PGB070 series gearboxes.
<b><u>PG090-KEY</u></b>	\$4.50	Output Shaft Key, replacement, 6 x 6 x 28 mm, for SureGear PGA090 and PGB090 series gearboxes.
<b><u>PG120-KEY</u></b>	\$4.50	Output Shaft Key, replacement, 10 x 8 x 45 mm, for SureGear PGA120 and PGB120 series gearboxes.
<b><u>PG155-KEY</u></b>	\$4.50	Output Shaft Key, replacement, 12 x 8 x 65 mm, for SureGear PGA155 and PGB155 series gearboxes.
<b><u>PGA4-A5-BUSH</u></b>	\$22.50	Input Shaft Bushing, replacement, 28 x 22 x 30.5 mm, for all SureGear gearboxes using SV(2)L-210(B) and SV(2)M-210(B) SureServo motors.
<b><u>PGA6-BUSH</u></b>	\$22.50	Input Shaft Bushing, replacement, 38 x 35 x 36 mm, for all SureGear gearboxes using SV(2)M-220(B) and SV(2)M-230(B) SureServo motors.