

Stride[®] Managed Industrial Ethernet Switches

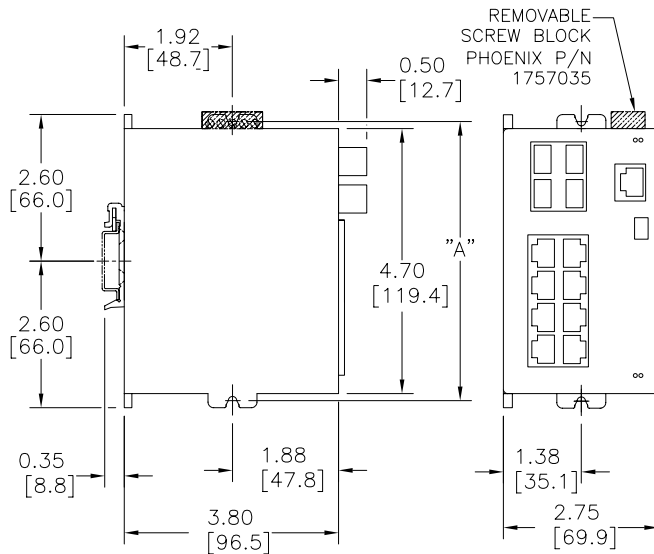
8-Port Gigabit Managed Ethernet Switch

STRIDE™ SlimLine industrial managed 8-port Ethernet switch with all Gigabit ports, metal housing, operating temperature range of -40 to +75 deg. C, eight 10/100/1000BaseT RJ45 Ethernet ports and four advanced combination SFP ports. Redundant power inputs with surge and spike protection, auto-crossover, DIN rail mounting. Supports Store and Forward wire speed switching and full-duplex with flow control. UL/CUL1604 (Class I, Div. 2, Groups A, B, C, D) and CE marked. Optional SFP modules sold separately.

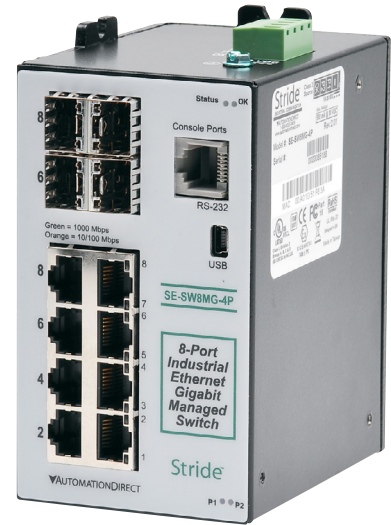
2-Year Warranty

Dimensions

Inches [mm]



SCREW MOUNTING LOCATIONS	
SCREW SIZE	DIM "A"
#6	5.05 [128.3]
#8	5.10 [129.5]
#10	5.15 [130.8]
#12	5.20 [132.1]



SE-SW8MG-4P

\$1,290.00

ACT/LNK/Speed LED

This is a bi-color (**green/yellow**) LED on models with one LED per RJ45 port.

ON Solid (not flashing)	Indicates that there is a proper Ethernet connection (Link) between the port and another Ethernet device, but no communications activity is detected.
Flashing	Indicates that there is a proper Ethernet connection (Link) between the port and another Ethernet device, and that there is communications activity.
Green	A 100 Mbps (100BaseT) connection is detected.
Yellow	A 10 Mbps (10BaseT) connection is detected.
OFF	Indicates that there is not a proper Ethernet connection (Link) between the port and another Ethernet device. Make sure the cable has been plugged securely into the ports at both ends.

Specifications

The following are specifications relevant to the SE-SW8MG-4P 8-port Ethernet switch.

Input power (typical with all ports active at 100 Mbps)	12W with no fiber transceivers 15W with four fiber transceivers
Weight	12 oz (0.34 kg)
Power connector max. screw torque	5.0 lb-in (0.57 Nm)

Company Information

Control Systems Overview

CLICK PLC

Do-More PLCs Overview

Do-More H2 PLC

Do-More T1H PLC

DirectLOGIC PLCs Overview

DirectLOGIC DL05/06

DirectLOGIC DL105

DirectLOGIC DL205

DirectLOGIC DL305

DirectLOGIC DL405

Productivity Controller Overview

Productivity 3000

Universal Field I/O

Software

C-More HMI

C-More Micro HMI

ViewMarq Industrial Marquees

Other HMI

Communications

Appendix Book 1

Terms and Conditions

Stride[®] Managed Industrial Ethernet Switches

Specifications for SE-SW8MG-4P

General Specifications	
Ethernet switch type	8-Port Managed, All ports 10/100/1000
Operating mode	Store and forward wire speed switching, non-blocking. Broadcast and multicast storm protection
Devices supported	All IEEE 802.3 compliant devices are supported
Ethernet compliance	IEEE 802.3 (10Mbps Ethernet supports legacy devices) IEEE 802.3u (Fast Ethernet 100Mbps for newer devices) IEEE 802.3x (Full-Duplex with Flow Control) IEEE 802.1D/w (Rapid Spanning Tree for redundant rings and Spanning Tree for interoperability) IEEE 802.1p (Priority Queuing – QoS, CoS, ToS/DS) IEEE 802.1Q (VLAN for traffic segregation) IEEE 802.3ab/z
Ethernet protocols supported	SNMPv1 / v2 / v3, RMON, DHCP, SNMP, TFTP, STP, RSTP, QoS / CoS / ToS / DS, IGMPv1 / v2, VLAN (tag and port based), HTTP, HTTPS (SSL and TLS), Telnet, SSH and more
Industrial protocols supported	Modbus / TCP, EtherNet / IP, PROFINet, Foundation Fieldbus HSE and others
MAC addresses	8192 addresses
Memory bandwidth	32 Gbps
Latency (typical)	< 5 us + frame time
Power input	12 W (with no fiber transceivers); 15 W (with four fiber transceivers)
Redundant input terminals	
Input voltage	10-30 VDC (continuous) – Class 2 Power Supply
Reverse power protection	Yes
“OK” output	
Indicates power and operational status	Voltage same as switch input voltage Maximum current output 0.5 Amp
Transient protection	15,000 watts peak
Spike protection	5,000 watts (10x for 10 uS)
Ethernet isolation	1500 VRMS 1 minute
Operating temperature range	-40 to +75°C (cold startup at -40°C), -40 to +167°F (cold startup at -40°F)
Storage temperature range	-40 to +85 °C (-40 to +185 °F)
Humidity (non-condensing)	5 to 95% RH
Environmental Air	For use in Pollution Degree 2 environment. No corrosive gases permitted
Vibration and shock	IEC60068-2-6, -27 and -32
Agency Approvals	Electrical safety: UL1604 (Class 1, Div 2, Group A, B, C, D) E200031 CSA C22.2/14; EN61010-1, CE Marine and offshore rated per ABS
EMI emissions	FCC part 15, ICES-003, EN55022
EMC immunity	EMC: FCC part 15, ICES-003; EN55022, EN61000-6-2/4, CE
RoHS and WEEE	RoHS and WEEE compliant
Packaging and protection	Corrosion-resistant aluminum case; IP40 protection from dust and debris

Copper RJ45 Ports: Gigabit	
RJ45 ports	Eight RJ45 10/100/1000 fully 802.3z compliant Note Four ports are combination Gigabit ports that have both a RJ45 connector and SFP cage. For each of these ports only one connector can be used at a time.
RJ45 speed and duplex	Configurable or 10/100/100 auto-detecting for speed and duplex (full or half)
RJ45 MDI / MDIX	Auto-mdi / mdix-crossover automatically supports either straight or crossed cables
RJ45 Polarity	Auto-polarity for automatic correction of crossed TXD and RXD pairs
Modes	Full or half duplex operation with flow control supported on all ports

SFP	
SFP (pluggable) ports accept Mini-GBIC (SFP) transceivers with a speed of 1000Mbps or 100Mbps	
See separate datasheet for optional fiber transceiver specifications	

Console ports: USB and RS232 (RJ45)	
Management interfaces	Text (Telnet and SSH), CLI (command line interface) and SNMP (see the user manual for supported MIBs)

Stride Industrial Ethernet Fiber Transceivers

STRIDE SFP (small form-factor pluggable) transceivers, also called mini-GBIC, are compact, hot-swappable transceivers with LC fiber connectors. The Stride SE-SW8MG-4P and SE-SW10MG-2P switches have ports that accept these optional transceivers to add fiber connectivity at Fast Ethernet or Gigabit Ethernet speed.



NOTE: PORT SPEED SETTINGS FOR THE STRIDE SWITCH MUST BE MANUALLY SET TO 100 MBPS WHEN USING A FAST ETHERNET SFP.

Features

- SFP Multi-Source Agreement compliant
- Serial ID functionality support
- -40° to +85°C operating temperature range
- 5 – 95% humidity (non-condensing)
- Class 1 laser safety standard IEC 60825 compliant
- Hot swappable
- 2-year warranty

Part Number	Mode	Data Rate	Light Source	Max Trans. Distance	Price
SFP-4K-FMF	Multi-mode	Fast Ethernet (155MB)	1310 nm, FP	4km	\$100.00
SFP-30K-FSF	Single-mode	Fast Ethernet (155MB)	1310 nm, FP	30 km	\$30.75
SFP-500-GMF	Multi-mode	Gigabit (1.25 GB)	850 nm, VCSEL	550m	\$78.00
SFP-2K-GMF	Multi-mode	Gigabit (1.25 GB)	1310 nm, FP	2km	\$60.00
SFP-10K-GSF	Single-mode	Gigabit (1.25 GB)	1310 nm, FP	10 km	\$82.00
SFP-30K-GSF	Single-mode	Gigabit (1.25 GB)	1310 nm, DFB	30 km	\$84.00

Dimensions

Inches [mm]

