

# Stride<sup>®</sup> Managed Industrial Ethernet Switches

Specifications for SE-SW5M, SE-SW5M-2ST, SE-SW5M-2SC, SE-SW8M, SE-SW8M-2ST and SE-SW8M-2SC

General Specifications	
<b>Ethernet switch type</b>	Industrial Ethernet managed switch with 5 or 8 ports
<b>Operating mode</b>	Store and forward wire speed switching, non-blocking. Broadcast and multicast storm protection
<b>Devices supported</b>	All IEEE 802.3 compliant devices are supported
<b>Ethernet compliance</b>	IEEE 802.3 (10Mbps Ethernet supports legacy devices) IEEE 802.3u (Fast Ethernet 100Mbps for newer devices) IEEE 802.3x (Full-Duplex with Flow Control) IEEE 802.1D/w (Rapid Spanning Tree for redundant rings and Spanning Tree for interoperability) IEEE 802.1p (Priority Queuing – QoS, CoS, ToS/DS) IEEE 802.1Q (VLAN for traffic segregation) IEEE 802.3ab
<b>Ethernet protocols supported</b>	SNMPv1 / v2 / v3, RMON, DHCP, SNMP, TFTP, STP, RSTP, QoS / CoS / ToS / DS, IGMPv1 / v2, VLAN (tag and port based), HTTP, HTTPS (SSL and TLS), Telnet, SSH and more
<b>Industrial protocols supported</b>	Modbus / TCP, EtherNet / IP, PROFINet, Foundation Fieldbus HSE and others
<b>MAC addresses</b>	2048 addresses
<b>Memory bandwidth</b>	3.2 Gbps
<b>Latency (typical)</b>	10M ports 16 $\mu$ s + frame time 100M ports 5 $\mu$ s + frame time
<b>Power input (typical - all ports active at 100 Mbps)</b> <b>Redundant input terminals</b>	SE-SW5M - 3.6 W SE-SW5M-2ST / -2SC - 4.3 W SE-SW8M - 5.6 W SE-SW8M-2ST / -2SC - 6.3 W
<b>Input voltage</b>	10-30 VDC (continuous) - Class 2 Power Supply
<b>Reverse power protection</b>	Yes
<b>“OK” output</b> <b>Indicates power and operational status</b>	Voltage same as switch input voltage Maximum current output 0.5 Amp
<b>Transient protection</b>	15,000 watts peak
<b>Spike protection</b>	5,000 watts (10x for 10 $\mu$ s)
<b>Ethernet isolation</b>	1500 VRMS 1 minute
<b>Operating temperature range</b>	-40 to +75°C (cold startup at -40°C), -40 to +167°F (cold startup at -40°F)
<b>Storage temperature range</b>	-40 to +85 °C (-40 to +185 °F)
<b>Humidity (non-condensing)</b>	5 to 95% RH
<b>Environmental Air</b>	For use in Pollution Degree 2 environment. No corrosive gases permitted
<b>Vibration and shock</b>	IEC60068-2-6, -27 and -32
<b>Agency Approvals</b>	Electrical safety: UL1604 (Class 1, Div 2, Group A, B, C, D) E200031 CSA C22.2/14; EN61010-1, CE Marine and offshore rated per ABS
<b>EMI emissions</b>	FCC part 15, ICES-003, EN55022
<b>EMC immunity</b>	IEC61000-6-2, CE
<b>Eye safety (fiber models)</b>	IEC60825-1, Class 1; FDA 21 CFR 1040.10 and 1040.11
<b>RoHS and WEEE</b>	RoHS and WEEE compliant
<b>Packaging and protection</b>	Aluminum case; IP30

Copper RJ45 Ports:	
<b>RJ45 ports</b>	Shielded RJ45 10/100 fully 802.3 compliant
<b>RJ45 speed and duplex</b>	Configurable or 10/100 auto-negotiating
<b>MDI / MDIX</b>	Auto-mdi / mdix-crossover automatically supports either straight or crossed cables
<b>Polarity</b>	Auto-polarity for automatic correction of crossed TXD and RXD pairs
<b>Modes</b>	Full or half duplex operation with flow control supported on all ports

Fiber Ports	
2 optional multimode fiber optic ports (-ST or -SC models)	
<b>Fiber optic port speed</b>	100BaseFX (100 Mbps)
<b>Fiber optic port wavelength</b>	1300 nm center
<b>Fiber</b>	50 or 62.5/125 $\mu$ m (SC or ST)
<b>Fiber max. distance (full duplex)</b>	4 km (2.5 miles)

Console ports: USB and RS232 (RJ45)	
<b>Management interfaces</b>	Text (Telnet and SSH), CLI (command line interface) and SNMP (see the user manual for supported MIBs)
<b>Console ports are located on the bottom surface of the switch.</b>	

# Stride<sup>®</sup> Managed Industrial Ethernet Switches

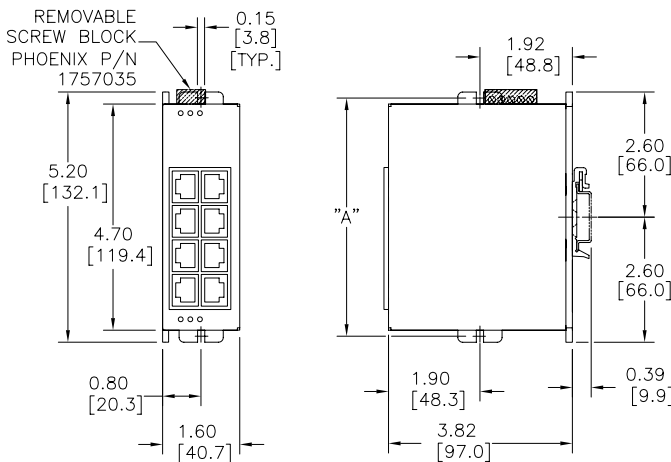
## 8-Port Managed Ethernet Switch

STRIDE SlimLine industrial managed 8-port Ethernet switch, metal housing, operating temperature range of -40 to +75 deg. C, eight 10/100BaseT RJ45 Ethernet ports. Redundant power inputs with surge and spike protection, auto-crossover, DIN rail mounting. Supports Store and Forward wire speed switching and full-duplex with flow control. UL/CUL1604 (Class I, Div. 2, Groups A, B, C, D) and CE marked.

**2-Year Warranty**

### Dimensions

Inches [mm]



SCREW MOUNTING LOCATIONS	
SCREW SIZE	DIM "A"
#6	5.05 [128.3]
#8	5.10 [129.5]
#10	5.15 [130.8]
#12	5.20 [132.1]



**SE-SW8M**

**\$595.00**

### ACT/LNK/Speed LED

This is a bi-color (**green/yellow**) LED on models with one LED per RJ45 port.

<b>ON (yellow) (not flashing)</b>	Indicates that there is a proper Ethernet connection (Link) between the port and another Ethernet device, but no communications activity is detected.
<b>ON (yellow) (flashing)</b>	Indicates that there is a proper Ethernet connection (Link) between the port and another Ethernet device, and that there is communications activity.
<b>OFF</b>	Indicates that there is not a proper Ethernet connection (Link) between the port and another Ethernet device. Make sure the cable has been plugged securely into the ports at both ends.

### Speed 10/100 LED

This is the **Green** LED on models with two LEDs per RJ45 port.

<b>ON (green)</b>	A 100 Mbps (100BaseT) connection is detected.
<b>OFF</b>	A 10 Mbps (10BaseT) connection is detected.

### Specifications

The following are specifications relevant to the SE-SW8M 8-port Ethernet switch.

<b>Input power (typical with all ports active at 100 Mbps)</b>	4.3 W
<b>Weight</b>	10 oz (0.28 kg)
<b>Power connector max. screw torque</b>	5.0 lb-in (0.57 Nm)

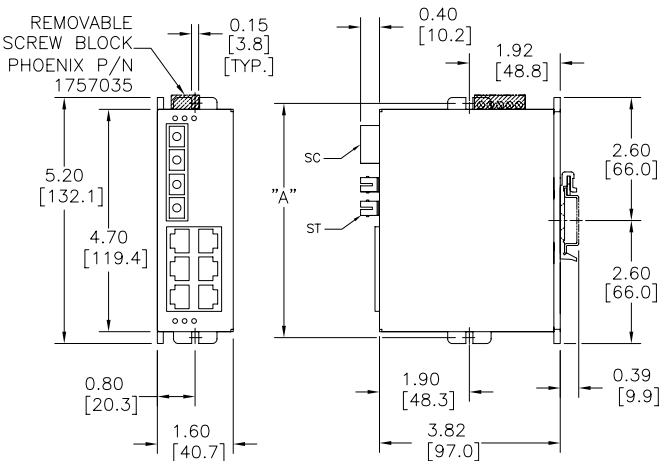
# Stride<sup>®</sup> Managed Industrial Ethernet Switches

## 8-Port Managed Ethernet Switch with Two Fiber Ports

STRIDE SlimLine industrial managed 8-port Ethernet switch, metal housing, operating temperature range of -40 to +75 deg. C, six 10/100BaseT RJ45 Ethernet ports and two multi-mode 100BaseFX fiber ports. Redundant power inputs with surge and spike protection, auto-crossover, DIN rail mounting. Supports Store and Forward wire speed switching and full-duplex with flow control. UL/CUL1604 (Class I, Div. 2, Groups A, B, C, D) and CE marked.

### Dimensions

Inches [mm]



SCREW MOUNTING LOCATIONS		
SCREW SIZE	DIM "A"	
#6	5.05	[128.3]
#8	5.10	[129.5]
#10	5.15	[130.8]
#12	5.20	[132.1]

### 2-Year Warranty



**SE-SW8M-2ST**

with 2 ST type fiber ports



**SE-SW8M-2SC**

with 2 SC type fiber ports

**\$740.00**

### ACT/LNK LED

This is the **Yellow** LED on models with two LEDs per RJ45 port.

<b>ON (yellow) (not flashing)</b>	Indicates that there is a proper Ethernet connection (Link) between the port and another Ethernet device, but no communications activity is detected.
<b>ON (yellow) (flashing)</b>	Indicates that there is a proper Ethernet connection (Link) between the port and another Ethernet device, and that there is communications activity.
<b>OFF</b>	Indicates that there is not a proper Ethernet connection (Link) between the port and another Ethernet device. Make sure the cable has been plugged securely into the ports at both ends.

### Speed 10/100 LED

This is the **Green** LED on models with two LEDs per RJ45 port adjacent to the fiber port.

<b>ON (green)</b>	A 100 Mbps (100BaseT) connection is detected.
<b>OFF</b>	A 10 Mbps (10BaseT) connection is detected.

### Fiber LED

This is the **Green** LED on the fiber optic models.

<b>ON (green) (not flashing)</b>	Indicates that there is a proper fiber connection (Link) between the port and another fiber device, but no communications activity is detected.
<b>ON (green) (flashing)</b>	Indicates that there is a proper fiber connection (Link) between the port and another fiber device, and that there is communications activity.
<b>OFF</b>	Indicates that there is not a proper fiber connection (Link) between the port and another fiber device. Make sure the fiber optic cable has been plugged securely into the ports at both ends.

### Specifications

The following are specifications relevant to the SE-SW8M-2ST and SE-SW8M-2SC 8-port Ethernet switches with fiber port.

<b>Input power (typical with all ports active at 100 Mbps)</b>	6.3 W
<b>Weight</b>	10 oz (0.28 kg)
<b>Power connector max. screw torque</b>	5.0 lb-in (0.57 Nm)