



WEG SSW07 Series Soft Starters

Accessories

SSW07 Series Accessories			
Part Number	Price	Type of Accessory	Description
<u>SSW07-08-HMI-LOC</u>	\$106.00	Keypad	SSW07 keypad HMI
<u>SSW07-HMI-REM</u>	\$208.00		SSW07 remote serial HMI. Remote keypad interface module included.
<u>SSW07-HMI-REM-485</u>	\$261.00		SSW07 remote serial HMI. Remote keypad interface with additional RS485 port module included.
<u>SSW07-08-KRS-485</u>	\$123.00	Communication	SSW07 series communication module, 1 RS-485 (5-pin) port.
<u>SSW07-08-KRS-232</u>	\$73.00		SSW07 series communication module, 1 RS-232 (RJ11) port.
<u>SSW0708900-KVT-2B</u>	\$40.00	Kits	SSW07 series main cooling fan. For use with WEG SSW07 series 45-105A soft starters. Electrical connector included.
<u>SSW0708900-KVT-3C</u>	\$57.00		SSW07 series main cooling fan. For use with WEG SSW07 series 130-200A soft starters. Electrical connector included.
<u>SSW07-08-KPTC-MTR</u>	\$75.00		SSW07 series PTC module, for use with WEG SSW07 series soft starters.
<u>SSW0708900-IP20-3C</u>	\$38.50		SSW07 series touch shield, for use with WEG SSW07 series 130-200A soft starters. Mounting hardware included. Provides IP20 protection rating.
<u>SSW0708900-IP20-4D</u>	\$80.00		SSW07 series touch shield, for use with WEG SSW07 series 255-412A soft starters. Mounting hardware included. Provides IP20 protection rating.



SSW07-08-HMI-LOC



SSW07-08-KRS-485



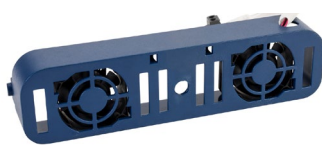
SSW07-08-KPTC-MTR



SSW07-08-KRS-232



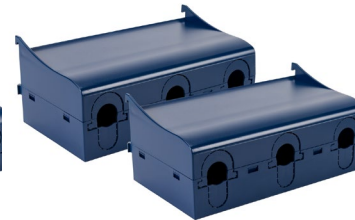
SSW0708900-KVT-2B



SSW0708900-KVT-3C



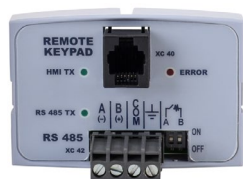
SSW0708900-IP20-3C



SSW0708900-IP20-4D



SSW07-HMI-REM-485



SSW07-HMI-REM



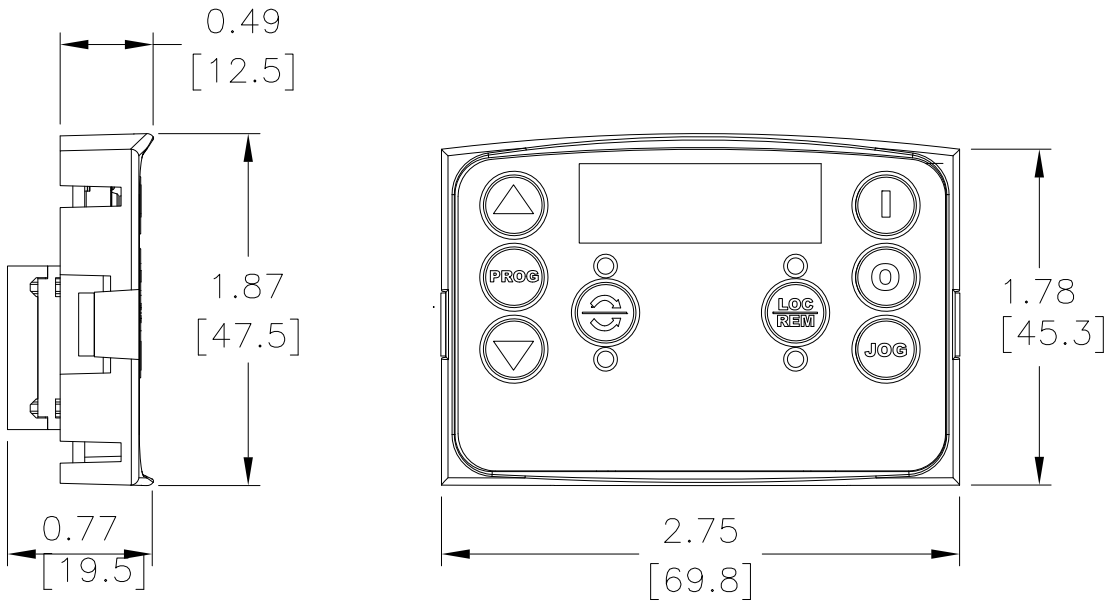


WEG SSW07 Series Soft Starters

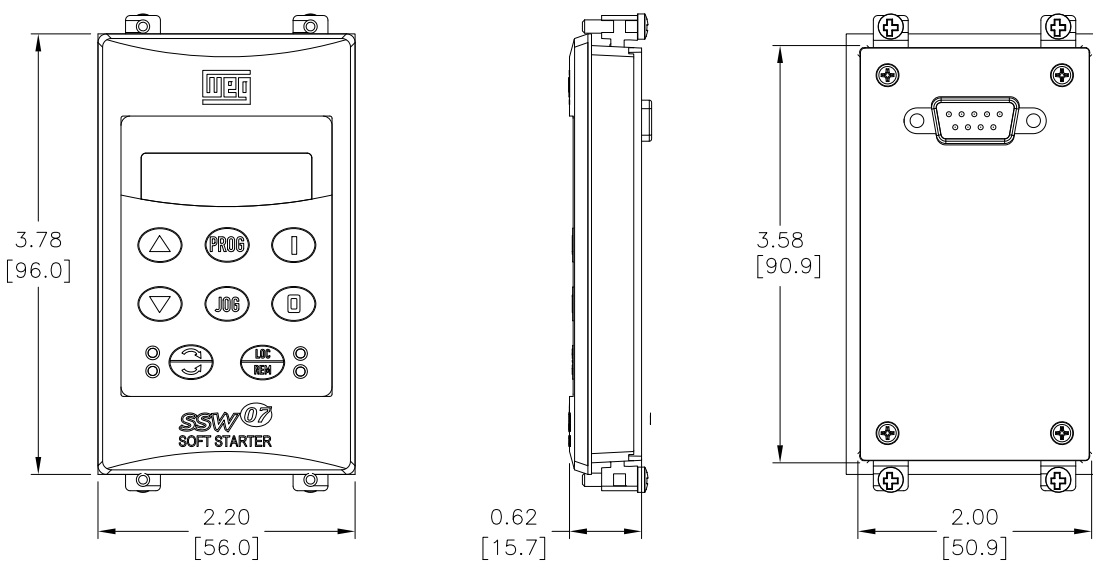
Accessories Dimensions

Inches [mm]

SSW07-08-HMI-LOC



SSW07-HMI-REM





WEG SSW07 Series Soft Starters

SSW07 Overcurrent Protection

Additional Accessories Recommended For Use With WEG SSW07 Series Soft Starters*					
Soft Starter Model Number	Standard Fault Short Circuit Rating $\leq 600V$	Circuit Breaker (CB) - UL489 Any MCCB	Circuit Breaker – Fuji ADC	Class T Fuse	Class T Fuse Holder
SSW070017T5SZ	5kA	$\leq 30A$	BW125JAGU-3P030SB -	TJS30-1	T60030-1SR
SSW070024T5SZ	5kA	$\leq 40A$	BW125JAGU-3P040SB -	TJS40-1	T60060-1CR
SSW070030T5SZ	5kA	$\leq 40A$	BW125JAGU-3P040SB -	TJS40-1	T60060-1CR
SSW070045T5SZ	5kA	$\leq 150A$	BW250JAGU-3P150SB F3P-150	TJS150	T60200-1C
SSW070061T5SZ	5kA	$\leq 150A$	BW250JAGU-3P150SB F3P-150	TJS150	T60200-1C
SSW070085T5SZ	10kA	$\leq 150A$	BW250JAGU-3P150SB F3P-150	TJS150	T60200-1C
SSW070130T5SZ	10kA	$\leq 225A$	BW250JAGU-3P225SB F3P-225	TJS225	T60400-1C
SSW070171T5SZ	10kA	$\leq 250A$	BW250JAGU-3P250SB K3P-250	TJS250	T60400-1C
SSW070200T5SZ	10kA	$\leq 250A$	BW250JAGU-3P250SB K3P-250	TJS250	T60400-1C
SSW070255T5SH1Z	18kA	$\leq 400A$	- L3P-400	TJS400	T60400-1C
SSW070312T5SH1Z	18kA	$\leq 400A$	- L3P-400	TJS400	T60400-1C
SSW070365T5SH1Z	18kA	$\leq 600A$	- L3P-600	TJS600	T60600-1C
SSW070412T5SH1Z	18kA	$\leq 600A$	- L3P-600	TJS600**	T60600-1C

* Maximum trip ratings are for non-time-delay overcurrent protection devices.

* Motor branch circuit protection must be based on MOTOR Full Load Current and must comply with applicable local electrical codes. The 2008 NEC section 430.52 recommends a maximum of 175% (up to 225% absolute maximum) of motor FLC for time-delay fuses. (Class CC time-delay fuses are permitted up to the non-time-delay fuse maximum rating.)

* These products are available at AutomationDirect.com.

** WEG allows maximum 700A fuse rating. 600A is the maximum fuse rating available from AutomationDirect.com.