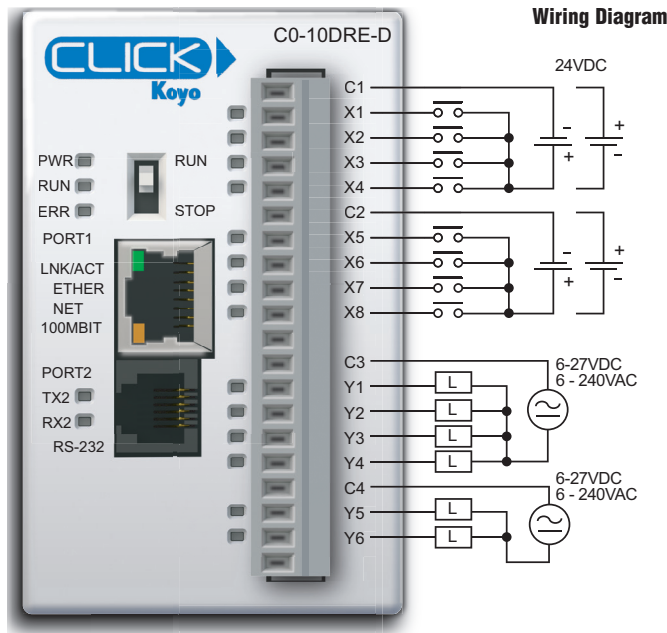


Ethernet Basic PLC

CO-10DRE-D **\$139.00**

8 DC Input/6 Relay Output Micro PLC



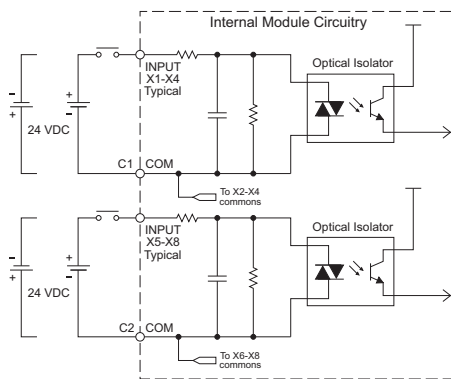
CO-10DRE-D Built-in I/O Specifications - Inputs	
Inputs per Module	8 (Sink/Source)
Operating Voltage Range	24 VDC
Input Voltage Range	21.6-26.4 VDC
Input Current	X1-4: Typ 6.5 mA @ 24 VDC X5-8: Typ 4 mA @ 24 VDC
Maximum Input Current	X1-4: 7.0 mA @ 26.4 VDC X5-8: 5.0 mA @ 26.4 VDC
Input Impedance	X1-4: 3.9 kΩ @ 24 VDC X5-8: 6.8 kΩ @ 24 VDC
ON Voltage Level	> 19 VDC
OFF Voltage Level	X1-4: < 2 VDC X5-8: < 7 VDC
Minimum ON Current	X1-4: 4.5 mA X5-8: 3.5 mA
Maximum OFF Current	X1-4: 0.5 mA X5-8: 1.5 mA
OFF to ON Response	X1-4: Typ 5 μs Max 20 μs X5-8: Typ 2 ms Max 10 ms
ON to OFF Response	X1-4: Typ 5 μs Max 20 μs X5-8: Typ 3 ms Max 10 ms
Status Indicators	Logic Side (8 points, green LED)
Commons	2 (4 points/common) Isolated

CO-10DRE-D Built-in I/O Specifications - Outputs	
Outputs per Module	6
Operating Voltage Range	6-240 VAC (47-63 Hz), 6-27 VDC
Output Voltage Range	5-264 VAC (47-63 Hz), 5-30 VDC
Output Type	Relay, form A (SPST)
Maximum Current	1 A/point; C3: 4 A/common, C4: 2 A/common
Minimum Load Current	5 mA @ 5 VDC
Maximum Inrush Current	3 A for 10 ms
OFF to ON Response	< 15 ms
ON to OFF Response	< 15 ms
Status Indicators	Logic Side (6 points, red LED)
Commons	2 (4 points/com & 2 points/com) Isolated

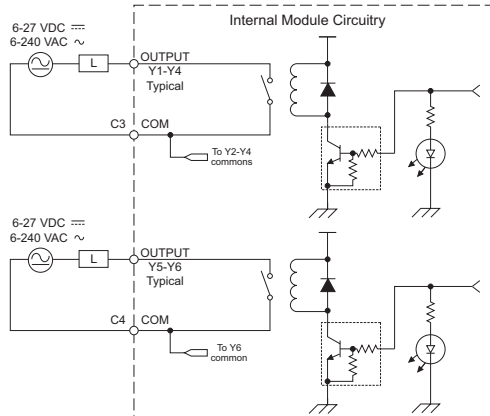
General Specifications	
Current Consumption at 24VDC	120 mA
Terminal Block Replacement Part No.	CO-16TB
Weight	5.6 oz (160 g)

NOTE: When using Ethernet Basic PLCs, you must use CLICK programming software version V2.00 or later.

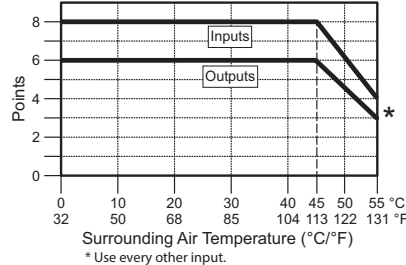
Equivalent Input Circuit



Equivalent Output Circuit



CO-10DRE-D Temperature Derating Chart



Typical Relay Life (Operations) at Room Temperature

Voltage & Load Type	Relay Life
30 VDC 1A Resistive	300,000 cycles
30 VDC 1A Solenoid	50,000 cycles
250 VAC 1A Resistive	500,000 cycles
250 VAC 1A Solenoid	200,000 cycles

ON to OFF = 1 cycle

ZIPLink Pre-Wired PLC Connection Cables and Modules



ZL-RTB20 20-pin feed-through connector module

20-pin connector cable
 ZL-CO-CBL20 (0.5 m length)
 ZL-CO-CBL20-1 (1.0 m length)
 ZL-CO-CBL20-2 (2.0 m length)