

# CLICK I/O Module Specifications

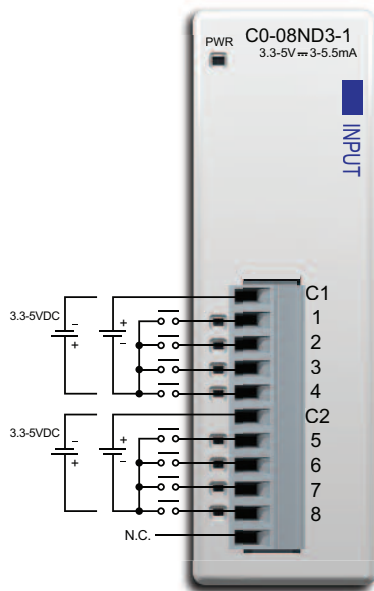
## CO-08ND3-1



### 8-Point Sink/Source DC Input Module

8-pt 3.3-5 VDC current sinking or sourcing input module, 2 commons, isolated, removable terminal block included (replacement ADC p/n CO-08TB).

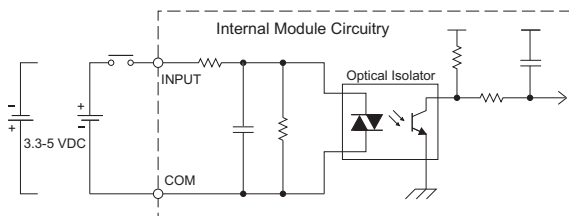
### Wiring Diagram



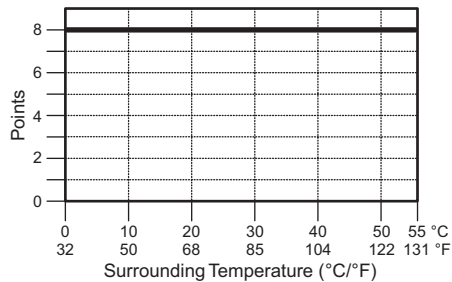
N.C. = Not Connected

CO-08ND3-1 Input Specifications	
<b>Inputs per Module</b>	8 (Sink/Source)
<b>Operating Voltage Range</b>	3.3-5 VDC
<b>Input Voltage Range</b>	2.8-5.5 VDC
<b>Input Current</b>	Typ 5 mA @ 5 VDC
<b>Maximum Input Current</b>	7.5 mA @ 5.5 VDC
<b>Input Impedance</b>	680Ω
<b>ON Voltage Level</b>	> 2.2 VDC
<b>OFF Voltage Level</b>	< 0.8 VDC
<b>Minimum ON Current</b>	1.4 mA
<b>Maximum OFF Current</b>	0.2 mA
<b>OFF to ON Response</b>	Max. 3 ms Typ. 1.6 ms
<b>ON to OFF Response</b>	Max. 4 ms Typ. 2.3 ms
<b>Status Indicators</b>	Logic Side (8 points, green LED) Power Indicator (green LED)
<b>Commons</b>	2 (4 points/common) Isolated
<b>Bus Power Required (24 VDC)</b>	Max. 30 mA (All Inputs On)
<b>Terminal Block Replacement</b>	ADC p/n CO-8TB
<b>Weight</b>	2.8 oz (80 g)

### Equivalent Input Circuit



### Input Module Temperature Derating Chart



### ZipLink Pre-Wired PLC Connection Cables and Modules



ZL-RTB20 20-pin feed-through connector module



11-pin connector cable  
ZL-CO-CBL11 (0.5 m length)  
ZL-CO-CBL11-1 (1.0 m length)  
ZL-CO-CBL11-2 (2.0 m length)