

CLICK I/O Module Specifications

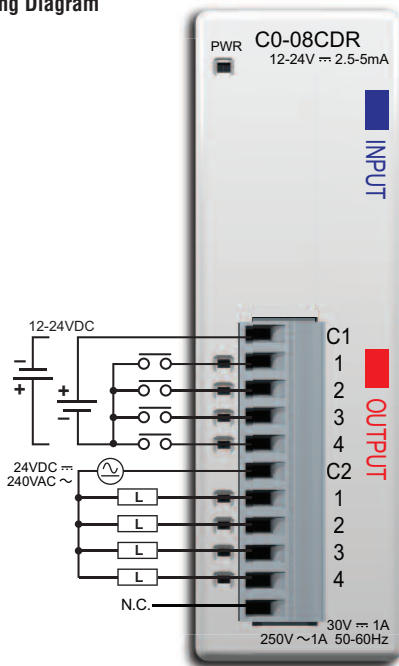
C0-08CDR



4-Point DC Input and 4-Point Relay Output Module

4-point 12-24 VDC current sinking/sourcing input, 1 common, 4-point 6.25-24 VDC / 6-240 VAC relay output, Form A (SPST) relays 1A/pt., 1 common, non-fused, removable terminal block included. (replacement ADC p/n C0-8TB).

Wiring Diagram

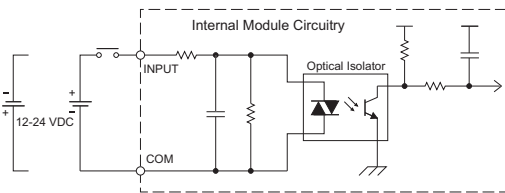


N.C. = Not Connected

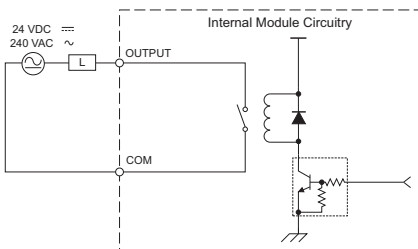


NOTE: When using this module you must also use CLICK programming software and CPU firmware version V1.40 or later.

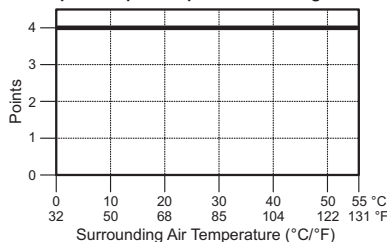
Equivalent Input Circuit



Equivalent Output Circuit



Input / Output Temperature Derating Chart



C0-08CDR Input Specifications	
Inputs per Module	4 (source/sink)
Operating Voltage Range	CE: 12-24 VDC (-10%/+10%) UL: 12-24 VDC (-10%/+10%)
Input Voltage Range	10.8 - 26.4 VDC
Input Current	Typ 5.0 mA @ 24 VDC
Maximum Input Current	7.0 mA @ 26.4 VDC
Input Impedance	4.7 kΩ @ 24 VDC
ON Voltage Level	>8.0 VDC
OFF Voltage Level	<3.0 VDC
Minimum ON Current	1.4 mA
Maximum OFF Current	0.5 mA
OFF to ON Response	Max. 3.5 ms Typ. 2 ms
ON to OFF Response	Max. 4 ms Typ. 2.5 ms
Status Indicators	Logic Side (4 points, green LED) Power Indicator (green LED)
Commons	1 (4 points/common)

C0-08CDR Output Specifications	
Outputs per Module	4 (Relay)
Operating Voltage Range	CE: 6.25 - 24 VDC (-15%/+10%) / 6 - 240 VAC (-15%/+10%) UL: 24 VDC (-15%/+10%) / 240 VAC (-10%/+10%)
Peak Voltage	30 VDC / 264 VAC
Output Type	Relay, Form A (SPST)
AC Frequency	47-63 Hz
Maximum Current	1 A/point, 4 A/common
Minimum Load Current	5mA @ 5VDC
Maximum Leakage Current	0.1 mA @ 264 VAC
Maximum Inrush Current	3 A for 10 ms
OFF to ON Response	<15 ms
ON to OFF Response	<15 ms
Status Indicators	Logic Side (4 points, red LED)
Commons	1 (4 points/common)

C0-08CDR General Specifications	
Bus Power Required (24 VDC)	Max. 80 mA (all points on)
Protection Circuit	Not built into the module - Install protection elements such as external fuse
Terminal Block Replacement	ADC p/n C0-8TB
Weight	3.2 oz (90 g)

C0-08CDR Typical Relay Life (Operations) at Room Temperature	
Voltage & Load Type*	Relay Life (ON to OFF = 1 cycle)
30 VDC, 1A, Resistive	80,000 cycles
30 VDC, 1A, Solenoid	80,000 cycles
250 VAC, 1A, Resistive	80,000 cycles
250 VAC, 1A, Solenoid	80,000 cycles

* These relay outputs support both inductive (solenoid) and resistive loads.

ZipLink Pre-Wired PLC Connection Cables and Modules for CLICK PLC

ZL-RTB20 20-pin feed-through connector module



11-pin connector cable
ZL-C0-CBL11 (0.5 m length)
ZL-C0-CBL11-1 (1.0 m length)
ZL-C0-CBL11-2 (2.0 m length)