

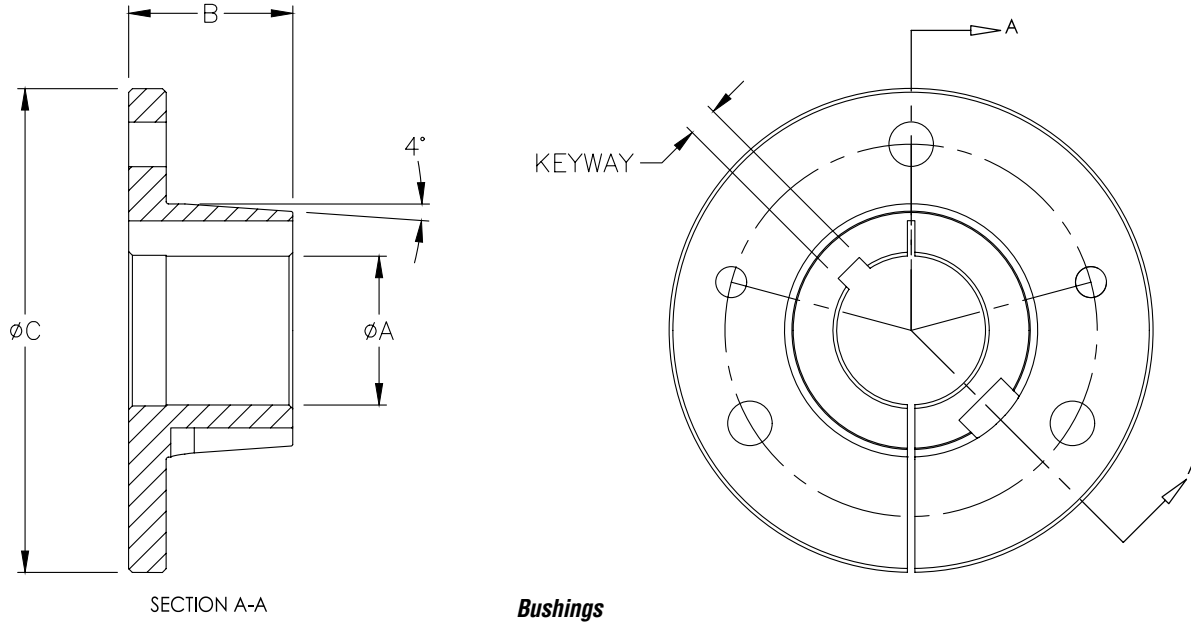
# IronHorse® Shaft Mount Gearboxes

## Accessories

IronHorse® Shaft Mount Gearboxes Accessories					
Part Number	Price	Description	Fits Frame Size	Includes	Typical Photo
<b>SMR2-TBK-20</b>	\$74.00	1-1/4" tapered bushing kit	2	Fastening bolts and a full length shaft key	
<b>SMR2-TBK-23</b>	\$74.00	1-7/16" tapered bushing kit			
<b>SMR2-TBK-24</b>	\$74.00	1-1/2" tapered bushing kit			
<b>SMR2-TBK-31</b>	\$74.00	1-15/16" tapered bushing kit			
<b>SMR3-TBK-27</b>	\$88.00	1-11/16" tapered bushing kit	3		
<b>SMR3-TBK-31</b>	\$88.00	1-15/16" tapered bushing kit			
<b>SMR3-TBK-32</b>	\$88.00	2" tapered bushing kit			
<b>SMR3-TBK-35</b>	\$88.00	2-3/16" tapered bushing kit	4		
<b>SMR4-TBK-31</b>	\$122.00	1-15/16" tapered bushing kit			
<b>SMR4-TBK-32</b>	\$122.00	2" tapered bushing kit			
<b>SMR4-TBK-35</b>	\$122.00	2-3/16" tapered bushing kit			
<b>SMR4-TBK-39</b>	\$122.00	2-7/16" tapered bushing kit	5		
<b>SMR5-TBK-35</b>	\$167.00	2-3/16" tapered bushing kit			
<b>SMR5-TBK-39</b>	\$167.00	2-7/16" tapered bushing kit			
<b>SMR5-TBK-40</b>	\$167.00	2-1/2" tapered bushing kit			
<b>SMR5-TBK-47</b>	\$167.00	2-15/16" tapered bushing kit			
<b>SMR2-CF</b>	\$135.00	Screw conveyor flange	2	Mounting Hardware	
<b>SMR3-CF</b>	\$152.00	Screw conveyor flange	3		
<b>SMR4-CF</b>	\$178.00	Screw conveyor flange	4		
<b>SMR5-CF</b>	\$206.00	Screw conveyor flange	5		
<b>SMR2-CDS-24</b>	\$141.00	1-1/2" screw conveyor drive shaft	2	Mounting Hardware	
<b>SMR2-CDS-32</b>	\$141.00	2" screw conveyor drive shaft			
<b>SMR2-CDS-39</b>	\$180.00	2-7/16" screw conveyor drive shaft			
<b>SMR2-CDS-48</b>	\$180.00	3" screw conveyor drive shaft			
<b>SMR3-CDS-24</b>	\$185.00	1-1/2" screw conveyor drive shaft	3		
<b>SMR3-CDS-32</b>	\$185.00	2" screw conveyor drive shaft			
<b>SMR3-CDS-39</b>	\$185.00	2-7/16" screw conveyor drive shaft			
<b>SMR3-CDS-48</b>	\$211.00	3" screw conveyor drive shaft	4		
<b>SMR4-CDS-24</b>	\$215.00	1-1/2" screw conveyor drive shaft			
<b>SMR4-CDS-32</b>	\$215.00	2" screw conveyor drive shaft			
<b>SMR4-CDS-39</b>	\$215.00	2-7/16" screw conveyor drive shaft			
<b>SMR4-CDS-48</b>	\$235.00	3" screw conveyor drive shaft	5		
<b>SMR5-CDS-32</b>	\$269.00	2" screw conveyor drive shaft			
<b>SMR5-CDS-39</b>	\$269.00	2-7/16" screw conveyor drive shaft			
<b>SMR5-CDS-48</b>	\$269.00	3" screw conveyor drive shaft			
<b>SMR5-CDS-55</b>	\$268.00	3-7/16" screw conveyor drive shaft			
<b>SMR2-BG</b>	\$208.00	Belt guard	2	-	
<b>SMR3-BG</b>	\$235.00	Belt guard	3		
<b>SMR4-BG</b>	\$271.00	Belt guard	4		
<b>SMR5-BG</b>	\$299.00	Belt guard	5		
<b>SMR2-MM</b>	\$202.00	Motor mount	2	Mounting Hardware	
<b>SMR3-MM</b>	\$207.00	Motor mount	3		
<b>SMR4-MM</b>	\$324.00	Motor mount	4		
<b>SMR5-MM</b>	\$324.00	Motor mount	5		
<b>SMR2-TARM</b>	\$50.00	Torque arm	2	Mounting Hardware	
<b>SMR3-TARM</b>	\$50.00	Torque arm	3		
<b>SMR4-TARM</b>	\$59.00	Torque arm	4		
<b>SMR5-TARM</b>	\$64.00	Torque arm	5		
<b>SMR2-BSK</b>	\$110.00	Backstop assembly	2	-	
<b>SMR3-BSK</b>	\$141.00	Backstop assembly	3		
<b>SMR4-BSK</b>	\$141.00	Backstop assembly	4		
<b>SMR5-BSK</b>	\$169.00	Backstop assembly	5		

# IronHorse<sup>®</sup> Shaft Mount Gearboxes

## Accessories Dimensions

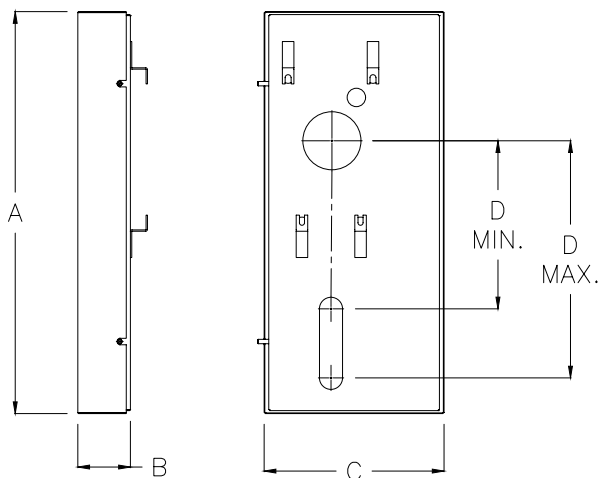


Bushings Dimensions						
Part Number	A (Bore)		B (Oal)		C (Flange)	
	in	mm	in	mm	in	mm
<b>SMR2-TBK-20</b>	1.25	31.75	1.38	35.0	4.06	103.2
<b>SMR2-TBK-23</b>	1.4375	36.51	1.38	35.0	4.06	103.2
<b>SMR2-TBK-24</b>	1.5	38.10	1.38	35.0	4.06	103.2
<b>SMR2-TBK-31</b>	1.9375	49.21	1.38	35.0	4.06	103.2
<b>SMR3-TBK-27</b>	1.6875	42.86	1.63	41.5	4.37	111.1
<b>SMR3-TBK-31</b>	1.9375	49.21	1.63	41.5	4.37	111.1
<b>SMR3-TBK-32</b>	2.0	50.80	1.63	41.5	4.37	111.1
<b>SMR3-TBK-35</b>	2.1875	55.56	1.63	41.5	4.37	111.1
<b>SMR4-TBK-31</b>	1.9375	49.21	2.13	54.0	4.81	122.2
<b>SMR4-TBK-32</b>	2.0	50.80	2.13	54.0	4.81	122.2
<b>SMR4-TBK-35</b>	2.1875	55.56	2.13	54.0	4.81	122.2
<b>SMR4-TBK-39</b>	2.4375	61.91	2.13	54.0	4.81	122.2
<b>SMR5-TBK-35</b>	2.1875	55.56	2.07	52.5	5.63	142.9
<b>SMR5-TBK-39</b>	2.4375	61.91	2.07	52.5	5.63	142.9
<b>SMR5-TBK-40</b>	2.5	63.50	2.07	52.5	5.63	142.9
<b>SMR5-TBK-47</b>	2.9375	74.61	2.07	52.5	5.63	142.9

See our website: [www.AutomationDirect.com](http://www.AutomationDirect.com) for complete engineering drawings

# IronHorse<sup>®</sup> Shaft Mount Gearboxes

## Accessories Dimensions



### Belt Guards

Belt Guards Dimensions										
Part Number	A		B		C		D min.		D max.	
	in	mm	in	mm	in	mm	in	mm	in	mm
<b>SMR2-BG</b>	34.37	873.0	4.48	113.9	15.35	390.0	14.37	365.0	20.28	515
<b>SMR3-BG</b>	37.32	948.0	4.53	115.0	17.91	455.0	14.67	372.5	20.69	525.5
<b>SMR4-BG</b>	43.61	1107.8	4.71	119.7	18.43	468.0	16.22	412.0	24.21	615
<b>SMR5-BG</b>	45.67	1160.0	5.32	135.1	18.39	467.0	16.73	425.0	25.87	657

See our website: [www.AutomationDirect.com](http://www.AutomationDirect.com) for complete engineering drawings