

# NEMA 4, 12 and 13 Single-Door Wall Mount with 3-Point Handle (Ultimate Series)



## Application

Designed to house and protect electrical and electronic components from harsh, dirty environments. For use in installations where dust, dirt, oil, water or other contaminants are present. Streamlined styling, 3-point latching with heavy-duty handle, and an attractive, durable finish complement any high-tech electronic equipment.

## Construction

- Bodies and doors fabricated from 14 gauge steel
- Plasma welded seams
- Polyurethane poured in place gasket
- Collar studs provided for mounting optional subpanels
- Grounding provisions provided
- Concealed hinges
- Increased tub openings to accommodate larger size [optional] subpanels
- Optional subpanels must be ordered separately
- Swing-out panel kits WAJCDFK and WANADFK will not work with these enclosures

- Doors are interchangeable and easily removable [open to 90° to remove door]
- 3-point keylocking/padlocking combo handle
- Mounting holes in rear of enclosure
- **Uses WAL4 series handles and WAEMK44 replacement key**

## Finish

- ANSI 61 gray light-textured [N41212xxxC] inside and outside over phosphatized surfaces
- Painted steel subpanels are white polyester powder over phosphatized surfaces
- Galvanized and stainless subpanels are a conductive finish [unpainted]

## Listings

- UL 508, Types 4, 12, and 13 [UL file E64791]
- CSA Certified, Types 4, 12, and 13 [CSA file LL66078]
- Meets NEMA/EEMAC Types 4, 12 and 13 requirements
- Wall mounting brackets required to maintain UL/CSA external mounting requirements.



FOR CURRENT LISTINGS, PLEASE SEE WWW.AUTOMATIONDIRECT.COM

Enclosure Shipping Schedule		
Same day	1 - 7 days	1 -10 days

Color indicates shipping lead time in business days.

NEMA 4, 12 and 13 Single-Door Wall Mount with 3-Point Handle (Ultimate Series)						
ANSI 61 Gray Light-Textured	Price	Enclosure Size HxWxD	C	Painted Steel Subpanel	Stainless Steel Subpanel	Galvanized Subpanel
N4122416063PTC	\$304.00	24.00 x 16.00 x 6.92 [610 x 406 x 176]	12 [305]	NP2416C	NP2416SSC	NP2416CG
N4122416083PTC	\$311.00	24.00 x 16.00 x 8.92 [610 x 406 x 227]	12 [305]	NP2416C	NP2416SSC	NP2416CG
N4122420063PTC	\$325.00	24.00 x 20.00 x 6.92 [610 x 508 x 176]	12 [305]	NP2420C	NP2420SSC	NP2420CG
N4122420083PTC	\$333.00	24.00 x 20.00 x 8.92 [610 x 508 x 227]	12 [305]	NP2420C	NP2420SSC	NP2420CG
N4122420123PTC	\$371.00	24.00 x 20.00 x 12.92 [610 x 508 x 328]	12 [305]	NP2420C	NP2420SSC	NP2420CG
N4122424063PTC	\$346.00	24.00 x 24.00 x 6.92 [610 x 610 x 176]	12 [305]	NP2424C	NP2424SSC	NP2424CG
N4122424083PTC	\$354.00	24.00 x 24.00 x 8.92 [610 x 610 x 227]	12 [305]	NP2424C	NP2424SSC	NP2424CG
N4122424123PTC	\$387.00	24.00 x 24.00 x 12.92 [610 x 610 x 328]	12 [305]	NP2424C	NP2424SSC	NP2424CG
N4122424163PTC	\$429.00	24.00 x 24.00 x 16.92 [610 x 610 x 430]	12 [305]	NP2424C	NP2424SSC	NP2424CG
N4122424203PTC	\$462.00	24.00 x 24.00 x 20.92 [610 x 610 x 531]	12 [305]	NP2424C	NP2424SSC	NP2424CG
N4122430083PTC	\$387.00	24.00 x 30.00 x 8.92 [610 x 762 x 227]	12 [305]	NP3024C	NP3024SSC	NP3024CG
N4123020083PTC	\$370.00	30.00 x 20.00 x 8.92 [762 x 508 x 227]	15 [381]	NP3020C	-	NP3020CG

Note: Subpanels must be ordered separately.  
Dimensions in inches [millimeters].  
Letters in table correspond to letters on dimensional drawings.

# NEMA 4, 12 and 13 Single-Door Wall Mount with 3-Point Handle (Ultimate Series)



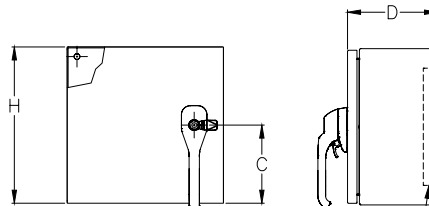
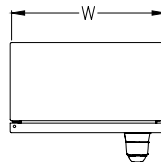
Enclosure Shipping Schedule			
Same day	1 - 7 days	1 - 10 days	1 - 15 days
Color indicates shipping lead time in business days.			

NEMA 4, 12 and 13 Single-Door Wall Mount with 3-Point Handle (Ultimate Series) – [cont.]						
ANSI 61 Gray Light-Textured	Price	Enclosure Size HxWxD	C	Painted Steel Subpanel	Stainless Steel Subpanel	Galvanized Subpanel
<b>N4123024083PTC</b>	\$387.00	30.00 x 24.00 x 8.92 [762 x 610 x 227]	15 [381]	<b>NP3024C</b>	<b>NP3024SSC</b>	<b>NP3024CG</b>
<b>N4123024123PTC</b>	\$423.00	30.00 x 24.00 x 12.92 [762 x 610 x 328]	15 [381]	<b>NP3024C</b>	<b>NP3024SSC</b>	<b>NP3024CG</b>
<b>N4123024203PTC</b>	\$508.00	30.00 x 24.00 x 20.92 [762 x 610 x 531]	15 [381]	<b>NP3024C</b>	<b>NP3024SSC</b>	<b>NP3024CG</b>
<b>N4123030083PTC</b>	\$425.00	30.00 x 30.00 x 8.92 [762 x 762 x 227]	15 [381]	<b>NP3030C</b>	<b>NP3030SSC</b>	<b>NP3030CG</b>
<b>N4123030123PTC</b>	\$465.00	30.00 x 30.00 x 12.92 [762 x 762 x 328]	15 [381]	<b>NP3030C</b>	<b>NP3030SSC</b>	<b>NP3030CG</b>
<b>N4123624083PTC</b>	\$419.00	36.00 x 24.00 x 8.92 [914 x 610 x 227]	18 [457]	<b>NP3624C</b>	<b>NP3624SSC</b>	<b>NP3624CG</b>
<b>N4123624123PTC</b>	\$471.00	36.00 x 24.00 x 12.92 [914 x 610 x 328]	18 [457]	<b>NP3624C</b>	<b>NP3624SSC</b>	<b>NP3624CG</b>
<b>N4123630083PTC</b>	\$463.00	36.00 x 30.00 x 8.92 [914 x 762 x 227]	18 [457]	<b>NP3630C</b>	<b>NP3630SSC</b>	<b>NP3630CG</b>
<b>N4123630123PTC</b>	\$508.00	36.00 x 30.00 x 12.92 [914 x 762 x 328]	18 [457]	<b>NP3630C</b>	<b>NP3630SSC</b>	<b>NP3630CG</b>
<b>N4123630163PTC</b>	\$566.00	36.00 x 30.00 x 16.92 [914 x 762 x 430]	18 [457]	<b>NP3630C</b>	<b>NP3630SSC</b>	<b>NP3630CG</b>
<b>N4123630203PTC</b>	\$612.00	36.00 x 30.00 x 20.92 [914 x 762 x 531]	18 [457]	<b>NP3630C</b>	<b>NP3630SSC</b>	<b>NP3630CG</b>
<b>N4123636083PTC</b>	\$508.00	36.00 x 36.00 x 8.92 [914 x 914 x 227]	18 [457]	<b>NP3636C</b>	<b>NP3636SSC</b>	<b>NP3636CG</b>
<b>N4123636123PTC</b>	\$556.00	36.00 x 36.00 x 12.92 [914 x 914 x 328]	18 [457]	<b>NP3636C</b>	<b>NP3636SSC</b>	<b>NP3636CG</b>
<b>N4124024123PTC</b>	\$526.00	40.00 x 24.00 x 12.92 [1016 x 610 x 328]	20 [508]	<b>NP4024C</b>	–	<b>NP4024CG</b>
<b>N4124236123PTC</b>	\$605.00	42.00 x 36.00 x 12.92 [1066 x 914 x 328]	21 [533]	<b>NP4236C</b>	<b>NP4236SSC</b>	<b>NP4236CG</b>
<b>N4124824123PTC</b>	\$546.00	48.00 x 24.00 x 12.92 [1219 x 610 x 328]	24 [610]	<b>NP4824C</b>	–	<b>NP4824CG</b>
<b>N4124836123PTC</b>	\$653.00	48.00 x 36.00 x 12.92 [1219 x 914 x 328]	24 [610]	<b>NP4836C</b>	<b>NP4836SSC</b>	<b>NP4836CG</b>
<b>N4124836163PTC</b>	\$710.00	48.00 x 36.00 x 16.92 [1219 x 914 x 430]	24 [610]	<b>NP4836C</b>	<b>NP4836SSC</b>	<b>NP4836CG</b>
<b>N4126036123PTC</b>	\$750.00	60.00 x 36.00 x 12.92 [1524 x 914 x 328]	30 [762]	<b>NP6036C</b>	<b>NP6036SSC</b>	<b>NP6036CG</b>

Note: Subpanels must be ordered separately.  
Dimensions in inches [millimeters].  
Letters in table correspond to letters on dimensional drawings.

## Dimensions

in [mm]



SUBPANEL  
(ORDER SEPARATELY)

### NOTES:

1. TWO HINGES PROVIDED WHEN H < 36".

THREE HINGES PROVIDED WHEN H = 36" OR GREATER.

FOUR HINGES PROVIDED WHEN

H = 48" OR GREATER.

See our website: [www.AutomationDirect.com](http://www.AutomationDirect.com) for complete engineering drawings.

# Enclosure Subpanels

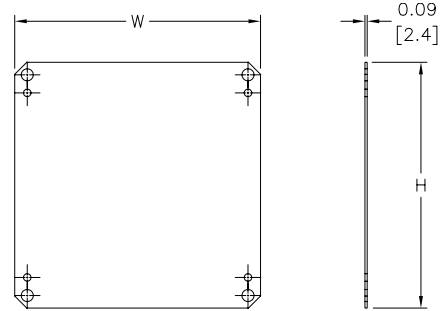


## Subpanels for Ultimate Series Wall Mount Enclosures

- 12 gauge steel
- Subpanels with dimensions 30" x 30" and larger are flanged on all sides. Smaller subpanels are flanged on two sides
- Painted steel subpanels are white polyester powder over phosphatized surfaces
- Galvanized subpanels have a conductive finish (no paint)



### Dimensions in [mm]



Panels listed fit all styles of N412 Ultimate Series wall mount enclosures, including slope top and disconnect enclosures.

**NOTE:** NPxxxxC subpanels will not fit in older NEMA 4/12 enclosures (purchased prior to 3-23-05) that do not have a C suffix. For example: Subpanel NP1212C will not fit enclosures N412121206 or N412121206SS.

Enclosure Shipping Schedule	
Same day	1 - 7 days
Color indicates shipping lead time in business days.	

Subpanels for Ultimate Series Wall Mount Enclosures							
Painted Steel	Price	Galvanized	Price	304 Stainless Steel	Price	Nominal Enclosure Size HxW*	Subpanel Size AxB
NP1212C	\$16.00	NP1212CG	\$16.00	—		12 x 12	10.20 x 10.20 [259 x 259]
NP1612C	\$19.50	NP1612CG	\$19.50	NP1612SSC	\$101.00	16 x 12	14.20 x 10.20 [361 x 259]
NP1616C	\$26.50	NP1616CG	\$26.50	NP1616SSC	\$70.00	16 x 16	14.20 x 14.20 [361 x 361]
NP2016C	\$26.50	NP2016CG	\$26.50	NP2016SSC	\$70.00	16 x 20 20 x 16	18.20 x 14.20 [462 x 361]
NP2020C	\$33.00	NP2020CG	\$33.00	NP2020SSC	\$93.00	20 x 20	18.20 x 18.20 [462 x 462]
NP2416C	\$37.00	NP2416CG	\$37.00	NP2416SSC	\$105.00	24 x 16	22.20 x 14.20 [564 x 361]
NP2420C	\$45.00	NP2420CG	\$45.00	NP2420SSC	\$119.00	24 x 20	22.20 x 18.20 [564 x 462]
NP2424C	\$47.50	NP2424CG	\$47.50	NP2424SSC	\$128.00	24 x 24	22.20 x 22.20 [564 x 564]
NP3020C	\$60.00	NP3020CG	\$60.00	—		30 x 20	28.20 x 18.20 [716 x 462]
NP3024C	\$57.00	NP3024CG	\$57.00	NP3024SSC	\$155.00	30 x 24	28.20 x 22.20 [716 x 564]
NP3030C	\$97.00	NP3030CG	\$97.00	NP3030SSC	\$276.00	30 x 30	28.20 x 28.20 [716 x 716]
NP3624C	\$75.00	NP3624CG	\$75.00	NP3624SSC	\$213.00	36 x 24	34.20 x 22.20 [869 x 564]
NP3630C	\$99.00	NP3630CG	\$99.00	NP3630SSC	\$263.00	36 x 30	34.20 x 28.20 [869 x 716]
NP3636C	\$117.00	NP3636CG	\$117.00	NP3636SSC	\$318.00	36 x 36	34.20 x 34.20 [869 x 869]
NP4024C	\$99.00	NP4024CG	\$99.00	—		40 x 24	38.20 x 22.20 [970 x 564]
NP4230C	\$126.00	—		—		42 x 32	40.20 x 28.20 [1021 x 716]
NP4236C	\$148.00	NP4236CG	\$148.00	NP4236SSC	\$411.00	42 x 36	40.20 x 34.20 [1021 x 869]
NP4824C	\$107.00	NP4824CG	\$107.00	—		48 x 24	46.20 x 22.20 [1173 x 564]
NP4836C	\$168.00	NP4836CG	\$168.00	NP4836SSC	\$446.00	48 x 36	46.20 x 34.20 [1173 x 869]
NP6036C	\$188.00	NP6036CG	\$188.00	NP6036SSC	\$535.00	60 x 36	58.20 x 34.20 [1478 x 869]

**Notes:** Dimensions in inches [millimeters].  
 Letters in table correspond to letters on dimensional drawing.  
 \*Disconnect enclosures will be up to 2 inches [51mm] wider than width dimensions in this table.

# Enclosure Accessories - Miscellaneous



Enclosures for Electrical/Electronic Equipment

## Vapor Capsule

### Carrying Handle



Carrying Handle	Price	Description	Wt.
<b>HW-CARRYINGHANDLE</b>	\$17.50	Non-metallic black handle, for use on Hubbell-Wiegmann non-metallic enclosures.	2 oz.



Vapor Capsule	Price	Description	Wt.
<b>HW-C12</b>	\$15.00	Non-toxic vapor emitted from the capsule passivates the metal surfaces on the interior of the enclosure against atmospheric corrosion for up to one year by reducing the electro-chemical activity of the metal surfaces. Installs easily with a self-adhesive strip.	1 oz.

### Strip Gasket



Enclosure Shipping Schedule	
Same day	1 - 14 days
Color indicates shipping lead time in business days.	

Strip Gasket	Price	Description	Wt.
<b>WGAS51634</b>	\$16.00	Hubbell-Wiegmann strip gasket, replacement, self-adhesive, microcell urethane foam, 5/16 inch thick x 3/4 inch wide x 10 ft long roll. For gasket replacement on Hubbell-Wiegmann wall-mount NEMA 12, 4 & 4X enclosures.	7oz.
<b>WGAS3834</b>	\$16.00	Hubbell-Wiegmann strip gasket, replacement, self-adhesive, closed cell sponge rubber, 3/8 inch thick x 3/4 inch wide x 10 ft long roll. For gasket replacement on Hubbell-Wiegmann floor-mount and freestanding NEMA 12, 4 & 4X enclosures.	7oz.

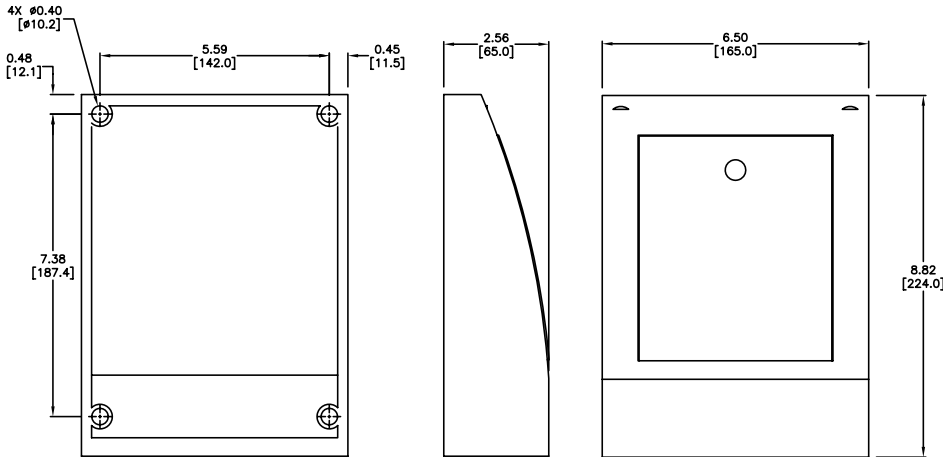


### Locking Protective Cover



#### Dimensions

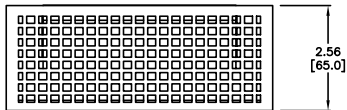
in [mm]



#### Features

- Packaged multi-purpose protective cover
- Locking door
- Weather and UV resistant (UL 94-HB)
- IP 20 Protection Class
- Includes mounting screws

Locking Protective Cover	Description	Price
<b>086110-00</b>	Stego multi-purpose protective cover with locking door, weather and UV resistant (UL 94-HB), IP20 protection class. Includes mounting screws and keys.	\$37.00



See our website: [www.AutomationDirect.com](http://www.AutomationDirect.com) for complete engineering drawings.