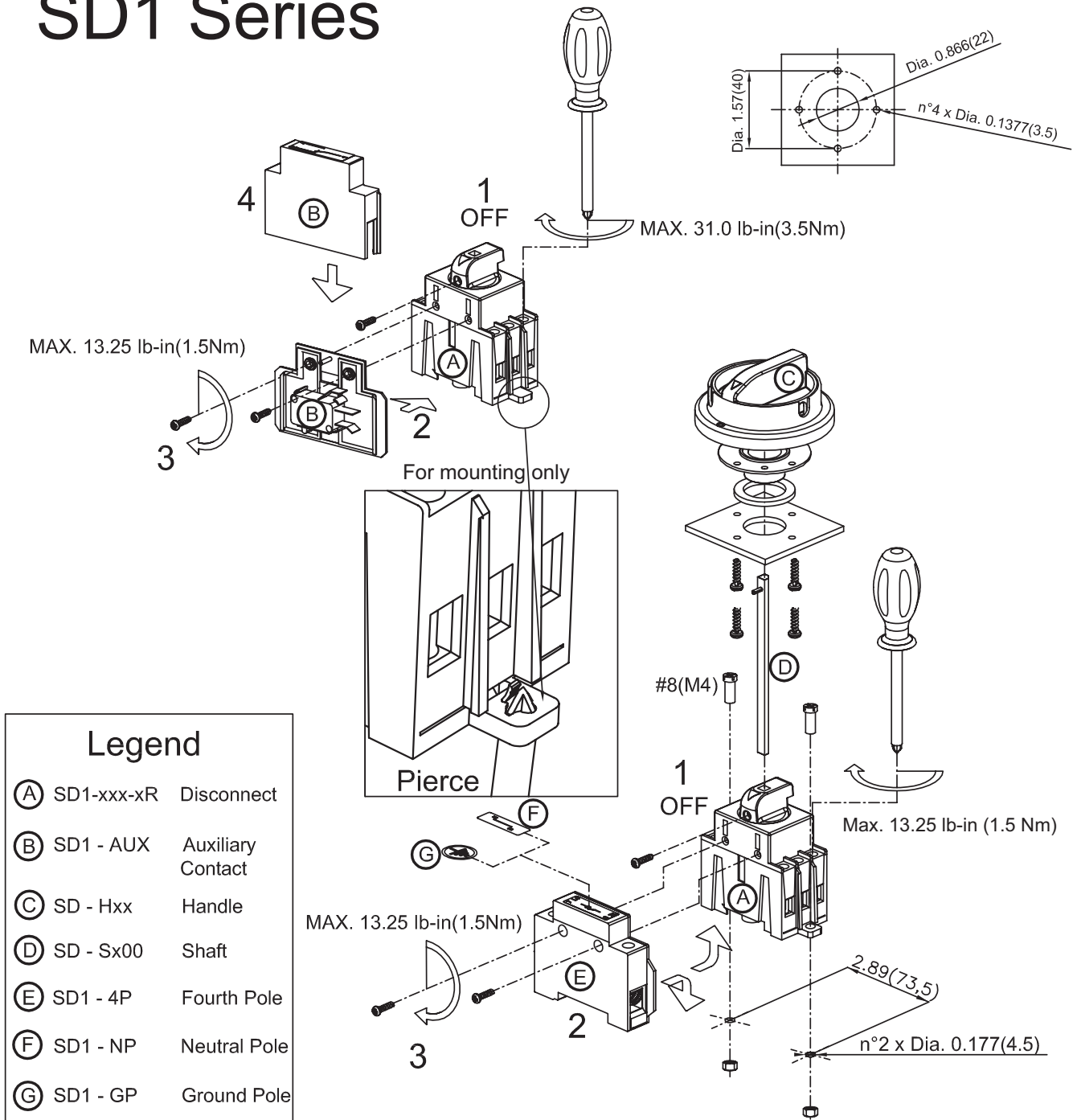


SD1/SD2 SERIES Non-FUSED

DISCONNECT ASSEMBLY INSTRUCTIONS

SD1 Series



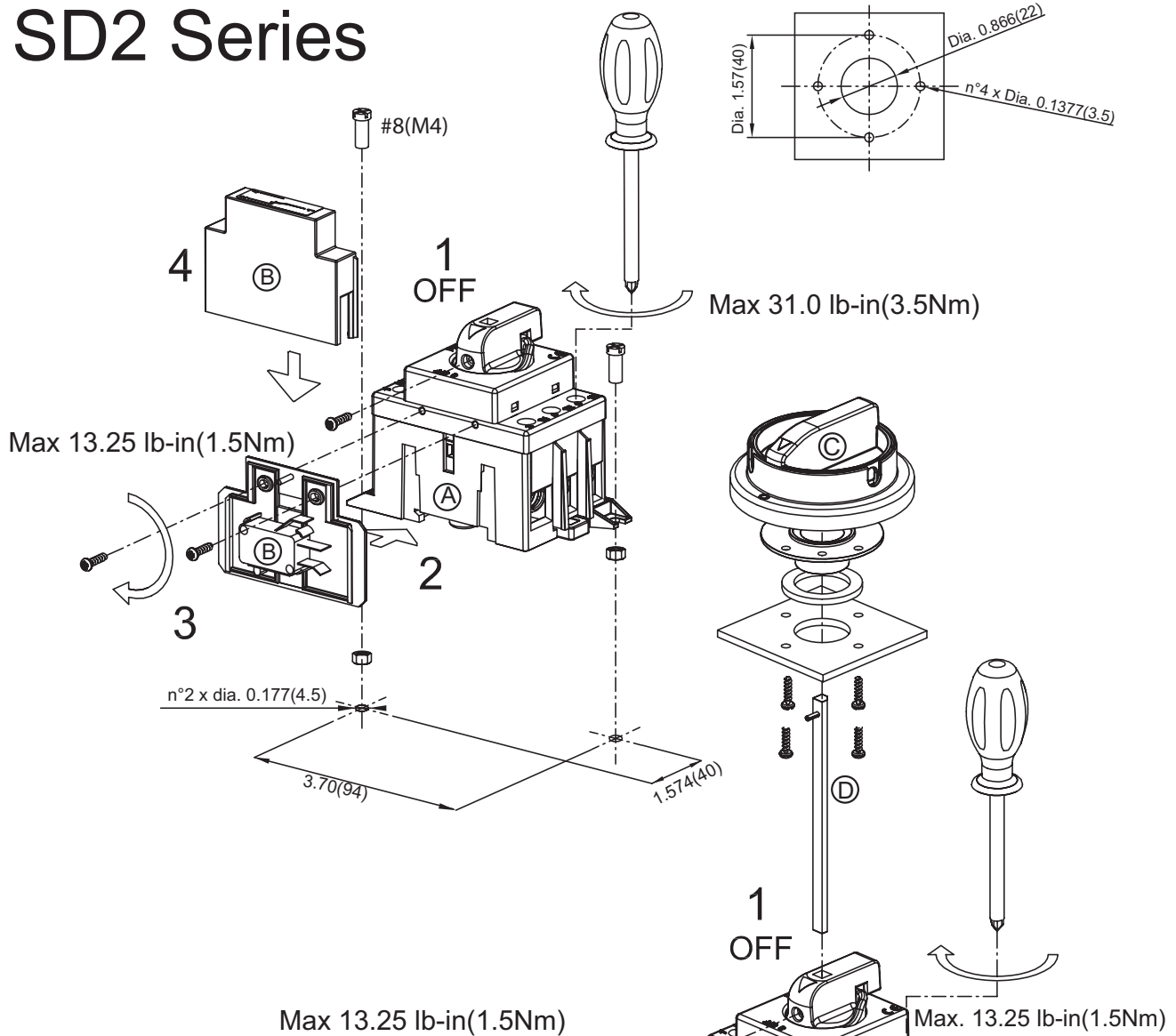
Legend	
(A)	SD1-xxx-xR Disconnect
(B)	SD1 - AUX Auxiliary Contact
(C)	SD - Hxx Handle
(D)	SD - Sx00 Shaft
(E)	SD1 - 4P Fourth Pole
(F)	SD1 - NP Neutral Pole
(G)	SD1 - GP Ground Pole

www.automationdirect.com

Note: dimensions in inches(mm)

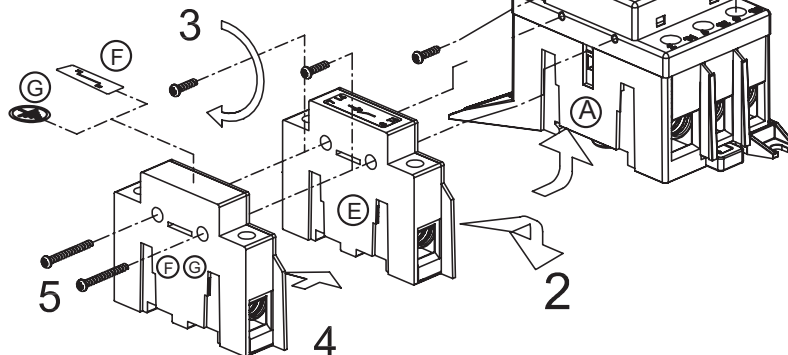
SD1/SD2 SERIES NON-FUSED DISCONNECT ASSEMBLY INSTRUCTIONS

SD2 Series



www.automationdirect.com

Legend	
(A)	SD2-xxx-xR Disconnect
(B)	SD2-AUX Auxiliary Contact
(C)	SD-Hxx Handle
(D)	SD-Sx00 Shaft
(E)	SD2-4P Fourth Pole
(F)	SD2-NP Neutral Pole
(G)	SD2-GP Ground Pole



Note: dimensions in inches(mm)