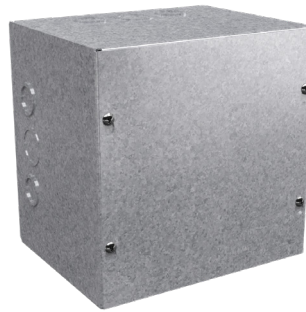


NEMA 1 Screw Cover Wall-Mount Galvanized Steel



SC080806G



SC080806GNK

Applications

These enclosures are designed for use as junction boxes and pull boxes in commercial and general industrial applications.

Construction

- Bodies and doors fabricated from G-90 pre-galvanized steel
- Flat, removable covers fastened with plated steel screws
- Cover design permits easy removal without extracting cover screws
- Mounting holes on back of enclosure
- Available with or without knockouts
- Removable concentric knockouts on all four sides of standard enclosures with knockouts

Finish

- G-90 pre-galvanized steel

Listings

- UL 50, Type 1 [UL File E6924]
- Meets NEMA/EEMAC Type 1 requirements

Shipping Schedule

Same day 1 - 5 days 1 - 7 days 1 - 15 days 1 - 20 days

Color indicates shipping lead time in business days.

NEMA 1 Screw Cover Wall-Mount Galvanized Steel

Galvanized				Body/Door Steel Gauge	Enclosure SizeHxD	Knockout Pattern	
With Knockouts	Price	Without Knockouts	Price			Width Side	Height Side
SC040404G*	\$9.75	SC040404GNK*	\$9.75	16/16	4.13 x 4.13 x 4.47 [105 x 105 x 114]	A	A
SC040604G*	\$11.75	SC040604GNK*	\$11.75	16/16	6.13 x 4.13 x 4.47 [156 x 105 x 114]	A	A-B-A
SC060604G	\$14.00	SC060604GNK	\$14.00	16/16	6.13 x 6.13 x 4.47 [156 x 156 x 114]	A-B-A	A-B-A
SC060606G	\$17.00	SC060606GNK	\$17.00	16/16	6.13 x 6.13 x 6.47 [156 x 156 x 164]	A-B-A	A-B-A
SC060804G	\$16.50	SC060804GNK	\$16.50	16/16	8.13 x 6.13 x 4.47 [207 x 156 x 114]	A-B-A	A-B-A
SC060806G	\$19.00	SC060806GNK	\$19.00	16/16	8.13 x 6.13 x 6.47 [207 x 156 x 164]	A-B-A	A-B-A
SC061204G	\$22.00	SC061204GNK	\$22.00	16/16	12.13 x 6.13 x 4.47 [308 x 156 x 114]	A-B-A	B-A-F-F-A-B
SC061206G	\$24.00	SC061206GNK	\$24.00	16/16	12.13 x 6.13 x 6.47 [308 x 156 x 164]	A-B-A	B-A-F-F-A-B
SC080804G	\$19.25	SC080804GNK	\$19.25	16/16	8.13 x 8.13 x 4.47 [207 x 207 x 114]	A-B-A	A-B-A
SC080806G	\$23.00	SC080806GNK	\$23.00	16/16	8.13 x 8.13 x 6.47 [207 x 207 x 164]	A-B-A	A-B-A
SC080808G	\$26.50	SC080808GNK	\$26.50	16/16	8.00 x 8.13 x 8.13 [203 x 207 x 207]	A-B-A	A-B-A
SC081004G	\$22.00	SC081004GNK	\$22.00	16/16	10.13 x 8.13 x 4.47 [257 x 207 x 114]	A-B-A	B-A-F-F-A
SC081006G	\$26.50	SC081006GNK	\$26.50	16/16	10.13 x 8.13 x 6.47 [257 x 207 x 164]	A-B-A	B-A-F-F-A
SC081204G	\$25.00	SC081204GNK	\$25.00	16/16	12.13 x 8.13 x 4.47 [308 x 207 x 114]	A-B-A	B-A-F-F-A-B
SC081206G	\$28.50	SC081206GNK	\$28.50	16/16	12.13 x 8.13 x 6.47 [308 x 207 x 164]	A-B-A	B-A-F-F-A-B

Notes: Dimensions in inches [millimeters].

*Not UL listed.

Table continued on next page

NEMA 1 Screw Cover Wall-Mount Galvanized Steel



Shipping Schedule				
Same day	1 - 5 days	1 - 7 days	1 - 15 days	1 - 20 days
Color indicates shipping lead time in business days.				

Table continued from previous page

NEMA 1 Screw Cover Wall-Mount Galvanized Steel							
Galvanized				Body/Door Steel Gauge	Enclosure SizeHxWxD	Knockout Pattern	
With Knockouts	Price	Without Knockouts	Price			Width Side	Height Side
SC101004G	\$25.50	SC101004GNK	\$25.50	16/16	10.13 x 10.13 x 4.47 [257 x 257 x 114]	B-A-F-F-A	B-A-F-F-A
SC101006G	\$30.00	SC101006GNK	\$30.00	16/16	10.13 x 10.13 x 6.47 [257 x 257 x 164]	B-A-F-F-A	B-A-F-F-A
SC101204G	\$29.00	SC101204GNK	\$29.00	16/16	12.13 x 10.13 x 4.47 [308 x 257 x 114]	B-A-F-F-A	B-A-F-F-A-B
SC101206G	\$34.00	SC101206GNK	\$34.00	16/16	12.13 x 10.13 x 6.47 [308 x 257 x 164]	B-A-F-F-A	B-A-F-F-A-B
SC121204G	\$32.50	SC121204GNK	\$32.50	16/16	12.13 x 12.13 x 4.47 [308 x 308 x 114]	B-A-F-F-A-B	B-A-F-F-A-B
SC121206G	\$38.50	SC121206GNK	\$38.50	16/16	12.13 x 12.13 x 6.47 [308 x 308 x 164]	B-A-F-F-A-B	B-A-F-F-A-B
SC121208G	\$40.50	SC121208GNK	\$40.50	16/16	12.00 x 12.13 x 8.13 [305 x 308 x 207]	B-A-F-F-A-B	B-A-F-F-A-B
SC121210G	\$43.50	SC121210GNK	\$43.50	16/16	12.00 x 12.13 x 10.13 [305 x 308 x 257]	B-A-F-F-A-B	B-A-F-F-A-B
SC121212G	\$66.00	SC121212GNK	\$66.00	16/16	12.00 x 12.13 x 12.13 [305 x 308 x 308]	B-A-F-F-A-B	B-A-F-F-A-B
SC121504G	\$37.50	SC121504GNK	\$37.50	16/16	15.13 x 12.13 x 4.47 [384 x 308 x 114]	B-A-F-F-A-B	A-B-A-F-F-A-B-A
SC121506G	\$44.00	SC121506GNK	\$44.00	16/16	15.13 x 12.13 x 6.47 [384 x 308 x 164]	B-A-F-F-A-B	A-B-A-F-F-A-B-A
SC121608G	\$54.00	SC121608GNK	\$54.00	16/16	16.00 x 12.13 x 8.13 [406 x 308 x 207]	B-A-F-F-A-B	A-B-A-F-F-A-B-A
SC121804G	\$44.00	SC121804GNK	\$44.00	16/16	18.13 x 12.13 x 4.47 [461 x 308 x 114]	B-A-F-F-A-B	A-B-A-F-F-A-B-A
SC121806G	\$51.00	SC121806GNK	\$51.00	16/16	18.13 x 12.13 x 6.47 [461 x 308 x 164]	B-A-F-F-A-B	A-B-A-F-F-A-B-A
SC121808G	\$53.00	SC121808GNK	\$53.00	16/16	18.00 x 12.13 x 8.13 [457 x 308 x 207]	B-A-F-F-A-B	A-B-A-F-F-A-B-A
SC121810G	\$71.00	SC121810GNK	\$71.00	16/16	18.00 x 12.13 x 10.13 [457 x 308 x 257]	B-A-F-F-A-B	A-B-A-F-F-A-B-A
SC122404G	\$56.00	SC122404GNK	\$56.00	16/16	24.12 x 12.13 x 4.47 [613 x 308 x 114]	B-A-F-F-A-B	A-B-A-F-F-A-B-A
SC122406G	\$65.00	SC122406GNK	\$65.00	16/16	24.12 x 12.13 x 6.47 [613 x 308 x 164]	B-A-F-F-A-B	A-B-A-F-F-A-B-A
SC122408G	\$77.00	SC122408GNK	\$77.00	16/16	24.00 x 12.13 x 8.13 [610 x 308 x 207]	B-A-F-F-A-B	A-B-A-F-F-A-B-A
SC122410G	\$65.00	SC122410GNK	\$65.00	16/16	24.00 x 12.13 x 10.13 [610 x 308 x 257]	B-A-F-F-A-B	A-B-A-F-F-A-B-A
SC122412G	\$68.00	SC122412GNK	\$68.00	16/16	24.00 x 12.13 x 12.13 [610 x 308 x 308]	B-A-F-F-A-B	A-B-A-F-F-A-B-A
SC151504G	\$45.50	SC151504GNK	\$45.50	16/16	15.13 x 15.13 x 4.47 [384 x 384 x 114]	A-B-A-F-F-A-B-A	A-B-A-F-F-A-B-A
SC151506G	\$51.00	SC151506GNK	\$51.00	16/16	15.13 x 15.13 x 6.47 [384 x 384 x 164]	A-B-A-F-F-A-B-A	A-B-A-F-F-A-B-A
SC151804G	\$56.00	SC151804GNK	\$56.00	16/16	18.13 x 15.13 x 4.47 [461 x 384 x 114]	A-B-A-F-F-A-B-A	A-B-A-F-F-A-B-A
SC151806G	\$59.00	SC151806GNK	\$59.00	16/16	18.13 x 15.13 x 6.47 [461 x 384 x 164]	A-B-A-F-F-A-B-A	A-B-A-F-F-A-B-A
SC181804G	\$59.00	SC181804GNK	\$59.00	16/16	18.13 x 18.13 x 4.47 [461 x 461 x 114]	A-B-A-F-F-A-B-A	A-B-A-F-F-A-B-A
SC181806G	\$68.00	SC181806GNK	\$68.00	16/16	18.13 x 18.13 x 6.47 [461 x 461 x 164]	A-B-A-F-F-A-B-A	A-B-A-F-F-A-B-A
SC181808G	\$77.00	SC181808GNK	\$77.00	16/16	18.00 x 18.13 x 8.13 [457 x 461 x 207]	A-B-A-F-F-A-B-A	A-B-A-F-F-A-B-A
SC181810G	\$99.00	SC181810GNK	\$99.00	16/16	18.00 x 18.13 x 10.13 [457 x 461 x 257]	A-B-A-F-F-A-B-A	A-B-A-F-F-A-B-A
SC181812G	\$85.00	SC181812GNK	\$85.00	16/16	18.00 x 18.13 x 12.13 [457 x 461 x 308]	A-B-A-F-F-A-B-A	A-B-A-F-F-A-B-A
SC182404G	\$91.00	SC182404GNK	\$91.00	16/16	24.12 x 18.13 x 4.47 [613 x 461 x 114]	A-B-A-F-F-A-B-A	A-B-A-F-F-A-B-A
SC182406G	\$107.00	SC182406GNK	\$107.00	16/16	24.12 x 18.13 x 6.47 [613 x 461 x 164]	A-B-A-F-F-A-B-A	A-B-A-F-F-A-B-A
SC182408G	\$115.00	SC182408GNK	\$115.00	16/16	24.00 x 18.13 x 8.13 [610 x 461 x 207]	A-B-A-F-F-A-B-A	A-B-A-F-F-A-B-A
SC182410G	\$177.00	SC182410GNK	\$177.00	16/16	24.00 x 18.13 x 10.13 [610 x 461 x 257]	A-B-A-F-F-A-B-A	A-B-A-F-F-A-B-A
SC182412G	\$192.00	SC182412GNK	\$192.00	16/16	24.00 x 18.13 x 12.13 [610 x 461 x 308]	A-B-A-F-F-A-B-A	A-B-A-F-F-A-B-A
SC183004G	\$112.00	SC183004GNK	\$112.00	16/16	30.12 x 18.13 x 4.47 [765 x 461 x 114]	A-B-A-F-F-A-B-A	A-B-A-F-F-A-B-A

Notes: Dimensions in inches [millimeters].
*Not UL listed.

Table continued on next page

NEMA 1 Screw Cover Wall-Mount Galvanized Steel



Shipping Schedule				
Same day	1 - 5 days	1 - 7 days	1 - 15 days	1 - 20 days
Color indicates shipping lead time in business days.				

Table continued from previous page

NEMA 1 Screw Cover Wall-Mount Galvanized Steel							
Galvanized				Body/Door Steel Gauge	Enclosure SizeHxWxD	Knockout Pattern	
With Knockouts	Price	Without Knockouts	Price			Width Side	Height Side
SC242404G	\$119.00	SC242404GNK	\$119.00	14/14	24.12 x 24.13 x 4.49 [613 x 613 x 114]	A-B-A-F-F-A-B-A	A-B-A-F-F-A-B-A
SC242406G	\$138.00	SC242406GNK	\$138.00	14/14	24.12 x 24.12 x 6.49 [613 x 613 x 165]	A-B-A-F-F-A-B-A	A-B-A-F-F-A-B-A
SC242408G	\$153.00	SC242408GNK	\$153.00	14/14	24.00 x 24.15 x 8.15 [610 x 613 x 207]	A-B-A-F-F-A-B-A	A-B-A-F-F-A-B-A
SC242410G	\$217.00	SC242410GNK	\$217.00	14/14	24.00 x 24.15 x 10.15 [610 x 613 x 258]	A-B-A-F-F-A-B-A	A-B-A-F-F-A-B-A
SC242412G	\$235.00	SC242412GNK	\$235.00	14/14	24.00 x 24.15 x 12.15 [610 x 613 x 309]	A-B-A-F-F-A-B-A	A-B-A-F-F-A-B-A
SC243006G	\$166.00	SC243006GNK	\$166.00	14/14	30.00 x 24.15 x 6.15 [762 x 613 x 156]	A-B-A-F-F-A-B-A	A-B-A-F-F-A-B-A
SC243008G	\$218.00	SC243008GNK	\$218.00	14/14	30.00 x 24.15 x 8.15 [762 x 613 x 207]	A-B-A-F-F-A-B-A	A-B-A-F-F-A-B-A
SC243010G	\$257.00	SC243010GNK	\$257.00	14/14	30.00 x 24.15 x 10.15 [762 x 613 x 258]	A-B-A-F-F-A-B-A	A-B-A-F-F-A-B-A
SC243012G	\$288.00	SC243012GNK	\$288.00	14/14	30.00 x 24.15 x 12.15 [762 x 613 x 309]	A-B-A-F-F-A-B-A	A-B-A-F-F-A-B-A
SC243608G	\$212.00	SC243608GNK	\$212.00	14/14	36.00 x 24.15 x 8.15 [914 x 613 x 207]	A-B-A-F-F-A-B-A	A-B-A-F-F-A-B-A
SC243610G	\$293.00	SC243610GNK	\$293.00	14/14	36.00 x 24.15 x 10.15 [914 x 613 x 258]	A-B-A-F-F-A-B-A	A-B-A-F-F-A-B-A
SC243612G	\$315.00	SC243612GNK	\$315.00	14/14	36.00 x 24.15 x 12.15 [914 x 613 x 309]	A-B-A-F-F-A-B-A	A-B-A-F-F-A-B-A
—	—	SC303008GNK	\$283.00	12/12	30.00 x 30.19 x 8.19 [762 x 767 x 208]	A-B-A-F-F-A-B-A	A-B-A-F-F-A-B-A
—	—	SC303010GNK	\$335.00	12/12	30.00 x 30.19 x 10.19 [762 x 767 x 259]	A-B-A-F-F-A-B-A	A-B-A-F-F-A-B-A
—	—	SC303012GNK	\$368.00	12/12	30.00 x 30.19 x 12.19 [762 x 767 x 310]	A-B-A-F-F-A-B-A	A-B-A-F-F-A-B-A
—	—	SC303608GNK	\$324.00	12/12	36.00 x 30.19 x 8.19 [914 x 767 x 208]	A-B-A-F-F-A-B-A	A-B-A-F-F-A-B-A
—	—	SC303610GNK	\$335.00	12/12	36.00 x 30.19 x 10.19 [914 x 767 x 259]	A-B-A-F-F-A-B-A	A-B-A-F-F-A-B-A
—	—	SC303612GNK	\$378.00	12/12	36.00 x 30.19 x 12.19 [914 x 767 x 310]	A-B-A-F-F-A-B-A	A-B-A-F-F-A-B-A
—	—	SC363608GNK	\$307.00	12/12	36.00 x 36.19 x 8.19 [914 x 919 x 208]	A-B-A-F-F-A-B-A	A-B-A-F-F-A-B-A
—	—	SC363610GNK	\$340.00	12/12	36.00 x 36.19 x 10.19 [914 x 919 x 259]	A-B-A-F-F-A-B-A	A-B-A-F-F-A-B-A
—	—	SC363612GNK	\$437.00	12/12	36.00 x 36.19 x 12.19 [914 x 919 x 310]	A-B-A-F-F-A-B-A	A-B-A-F-F-A-B-A

Notes: Dimensions in inches [millimeters].
*Not UL listed.

NEMA 1 Screw Cover Wall-Mount Galvanized Steel



Shipping Schedule				
Same day	1 - 5 days	1 - 7 days	1 - 15 days	1 - 20 days

Color indicates shipping lead time in business days.

Grounding Kit		
Part Number	Description	Price
WGNDKT	Grounding Kit	\$2.75

Note: Field grounding kit includes necessary parts to properly ground enclosure.

Dimensions

