

Schmersal Two-Hand Control Panels



Schmersal Two-Hand Control Panels are an all-in-one-box solution that is ergonomic, easy to set up, and easy to use. These panels take the guesswork out of two-hand pushbutton spacing and provide straightforward mounting options.



SEPK02.0.S-3065



SEPG05.3.S-3063

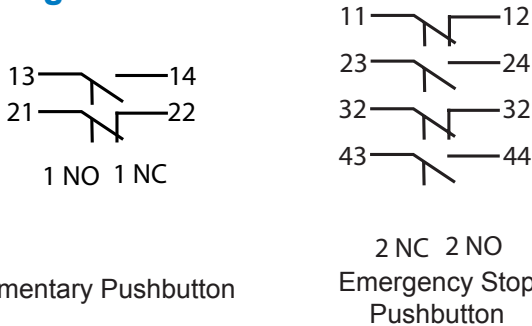
Applications

Two-hand control panels are designed for use in combination with a two-hand control monitoring device and require an operator to use both hands at the same time when initiating a hazardous operation. This forces operators to have their hands on the two-hand control actuator elements and out of the danger zone while the system is actuated.

Safety Design

These panels are designed with guard hoods over the actuator elements, which prevent individuals from circumventing the protection function using just one hand or other body parts. For additional safety, these two-hand control panels have been designed so that it is not possible to operate them from the back side of a panel.

Wiring Connections



Momentary Pushbutton

Emergency Stop Pushbutton

Features

- Pre-installed pushbuttons for ease of installation
- Ergonomic operation
- Two-part enclosure
- Thermoplastic or die-cast aluminum enclosure
- Ability to be wall mounted
- Guard hoods over the actuator elements
- Panels come with captive screws
- Light gray finish (RAL 7035)
- Optional empty enclosure

Additional features on SEPG05 version:

- Extended wrist support
- Nylon straps secured to the top and the bottom housing to prevent them from falling to the floor during maintenance work
- Includes removable wall mounting brackets

Pre-Installed Pushbuttons

The panels with push buttons are fitted with an Emergency Stop button that has two NO and two NC positive-break safety contacts and complies with EN ISO 13850. These panels are also fitted with two mushroom-head momentary contact pushbuttons. Each has one NO and one NC positive-break safety contacts.

Listings



Schmersal Two-Hand Control Panel Selection Chart							
Part Number	Price	Material	Pushbutton Options	Ingress Protection	Weight (kg [lb])	Dimensional Drawing	
Control Panel Versions With Pushbuttons							
			Type	Pushbutton Contacts			
SEPK02.0.S-3065	\$252.00	Thermoplastic	1 emergency stop	2 NO, 2 NC	IP65	2.2 [4.4]	PDF
			2 momentary	2 (1 NO, 1 NC)			
SEPG05.3.S-3063	\$398.00	Aluminum die-cast, powder coated	1 emergency stop	2 NO, 2 NC	IP65	4.4 [9.6]	PDF
			2 momentary	2 (1 NO, 1 NC)			
Control Panel Versions Without Pushbuttons							
SEPK02.0.L.22	\$147.00	Thermoplastic	Three 22mm holes	NA	1.68 [3.7]	PDF	
SEPG05.3.L.22	\$297.00	Aluminum die-cast, powder coated	Three 22mm holes	NA	4.04 [8.9]	PDF	

Schmersal Two-Hand Control Replacement Pushbuttons



EDRR40RT



EDP55SW

Schmersal Two-Hand Control Replacement Pushbuttons*		
Part Number	EDRR40RT **	EDP55SW
Price	\$27.50	\$35.50
Description	Emergency stop pushbutton with mounting flange, push to latch, twist and pull to unlatch, front plate mounting	Momentary pushbutton with mounting flange, front plate mounting
Front Ring Color	Gold	Silver
Mounting Diameter	22.3 mm [0.88 in]	22.3 mm [0.88 in]
Actuating Stroke	5mm [0.20 in]	5mm [0.20 in]
Dome Material	Anodized aluminum	Anodized aluminum
Front Ring Material	Anodized aluminum	Anodized aluminum
Front Panel Thickness	1.5 to 6 mm [0.06 to 0.24 in]	1.5 to 6 mm [0.06 to 0.24 in]
Weight	91g [3.20 oz]	91g [3.20 oz]
Mounting Screws Tightening Torque	0.6 N•m [0.44 lb•ft]	0.6 N•m [0.44 lb•ft]
Ambient Temperature	-25°C to +75°C [-13°F to +167°F]	-25°C to +75°C [-13°F to +167°F]
Shock Resistance	30g / 18ms	30g / 18ms
Ingress Protection Rating	IP65	IP65
Mechanical Life	100,000 operations	1,000,000 operations
Standards	EN 60947-5-1; EN 60947-1; UL File E57648	EN 60947-5-1; UL File 57648
Dimensional Drawing	PDF	PDF

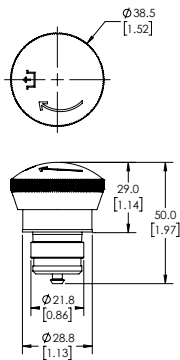
Dimensions

mm [in]

* Operator only. Purchase contact blocks separately.

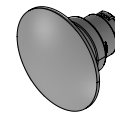
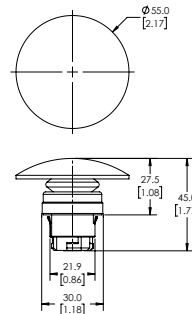
** Part number **EFR** is required to use this operator

EDRR40RT



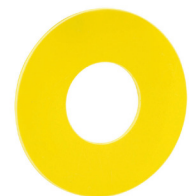
ISOMETRIC VIEW

EDP55SW



ISOMETRIC VIEW

Schmersal Legend Plate			
Part Number	Price	Description	Dimensional Drawing
MDP-8.1	\$3.50	Schmersal legend plate, thermoplastic, round, yellow field, yellow background, blank legend plate.	PDF



MDP-8.1

SCHMERSAL Contact Blocks



EF03.2



EF10.1



EF103.2



EF220.2



EF303.2



EFM

Contact Blocks								
Part Number	Price	Qty.	Drawing Link	Contacts	Mounting Position	Travel Diagram (mm)	Wiring Diagram	Application
EF10.1*	\$7.75	1	PDF	1 N.C.	1			Standard
EF10.2*	\$7.75	1	PDF		2			
EF10.3*	\$7.75	1	PDF		3			
EF03.1	\$7.75	1	PDF	1 N.O.	1			
EF03.2	\$7.75	1	PDF		2			
EF03.3	\$7.75	1	PDF		3			
EF110.1*	\$12.00	1	PDF	2 N.C.	1			
EF110.2*	\$12.00	1	PDF		2			
EF110.3*	\$12.00	1	PDF		3			
EF033.1	\$12.00	1	PDF	2 N.O.	1			
EF033.2	\$12.00	1	PDF		2			
EF033.3	\$12.00	1	PDF		3			
EF103.1*	\$9.75	1	PDF	1 N.C. / 1 N.O.	1			
EF103.2*	\$9.75	1	PDF		2			
EF103.3*	\$9.75	1	PDF		3			
EF220.1**	\$12.00	1	PDF	2 N.C.	1			Emergency Stop
EF220.2**	\$12.00	1	PDF		2			
EF220.3**	\$12.00	1	PDF		3			
EF303.1**	\$9.75	1	PDF	1 N.C. / 1 N.O.	1			
EF303.2**	\$9.75	1	PDF		2			
EF303.3**	\$9.75	1	PDF		3			

*Not suitable for Emergency Stop devices
 **Not suitable for maintained selector switches NWS/NWT

Travel Diagram Legend

= contact closed
 = contact open
 Numbers indicate distance in mm

Mounting Flange			
Part Number	Price	Description	Drawing Link
EFM	\$4.25	Schmersal mounting flange, replacement. For use with E and N series pushbuttons.	PDF

Safety Products



Warning: Safety products sold by AutomationDirect are Safety components only. The purchaser/installer is solely responsible for the application of these components and ensuring all necessary steps have been taken to assure each application and use meets all performance and applicable safety requirements and/or local, national and/or international safety codes as required by the application. AutomationDirect cannot certify that our products, used solely or in conjunction with other AutomationDirect or other vendors' products, will assure safety for any application. Any person using or applying any products sold by AutomationDirect is responsible for learning the safety requirements for their individual application and applying them, and therefore assumes all risks, and accepts full and complete responsibility, for the selection and suitability of the product for their respective application.

AutomationDirect does not provide design or consulting services, and cannot advise whether any specific application or use of our products would ensure compliance with the safety requirements for any application.