

Enclosure Accessories



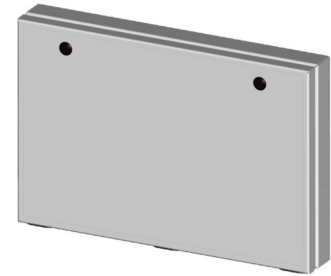
Your Enclosure Source®

Media Storage Pockets

Shipping Schedule	
Same day	1 - 15 days
Color indicates shipping lead time in business days.	

Designed to keep prints clean and easy to access. Exterior print pockets have a hinged cover with cable stops to hold the door at 90 degrees open position and black 1/4-turn latches. Made of steel and powder coated RAL 7035 gray. Provided with UL Recognized sealing washer to maintain environmental rating of the enclosure.

Exterior Print Pocket			
Part Number	Price	Size HxWxD	Drawing Link
SCE-13ELJEXPP	\$156.00	13 x 19 x 2.5 [330 x 483 x 64]	PDF
SCE-19ELJEXPP	\$156.00	19 x 13 x 2.5 [483 x 330 x 64]	PDF
<i>Note: Dimensions in inches [millimeters].</i>			



SCE-13ELJEXPP

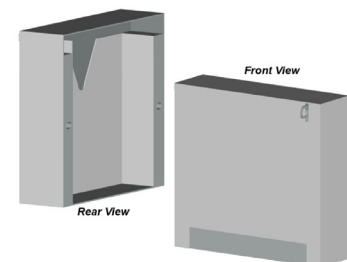
Interior Print Pocket				
Part Number	Price	Size HxWxD	Description	Drawing Link
SCE-PP7701	\$23.00	8 x 6.5 x 1 [203 x 165 x 25]	Small standard print pocket white polypropylene	PDF
SCE-PP101201	\$25.50	10 x 11.5 x 1 [254 x 292 x 25]	Large standard print pocket white polypropylene material	PDF
SCE-PP101203	\$28.00	10 x 11.5 x 3 [254 x 292 x 76]	Extra deep print pocket heavy gauge steel powder coated white	PDF
SCE-PP1212	\$39.00	12 x 11.7 x 1.6 [305 x 297 x 41]	Print pocket for 11 x 14 binder cover heavy gauge steel powder coated white	PDF
<i>Note: Dimensions in inches [millimeters].</i>				



SCE-PP7701

Disk pockets are constructed of carbon steel and powder coated white.

Disk Pocket			
Part Number	Price	Size HxWxD	Drawing Link
SCE-CDPK	\$127.00	6.00 x 6.00 x 2.00 [152 x 152 x 51]	PDF
SCE-DISKPK	\$127.00	4.31 x 5.50 x 1.50 [109 x 140 x 38]	PDF
<i>Note: Dimensions in inches [millimeters].</i>			



SCE-CDPK