

# Enclosure Accessories



Your Enclosure Source®

## Mounting Feet

Shipping Schedule	
Same day	1 - 15 days
Color indicates shipping lead time in business days.	

Multi-Door Mounting Feet			
Part Number	Price	Material	Qty
<b>SCE-HDWMK</b>	\$80.00	carbon steel	4
<b>SCE-HDWMKSS</b>	\$104.00	stainless steel	4

Designed for use on SCE Multi-Door Wall-Mount enclosures.

- Four mounting feet per kit.
- Made of heavy gauge stainless steel with a black textured finish.
- Hardware is included to fasten mounting kit to the enclosure.

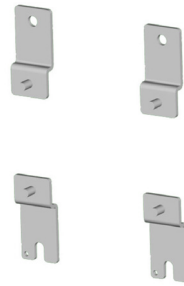


SCE-HDWMK

NEMA 3R Mounting Feet		
Part Number	Price	Qty
<b>SCE-N3RMFK4</b>	\$26.50	4

Designed for use on large wall-mount NEMA 3R enclosures.

- Made of heavy gauge carbon steel and powder coated ANSI 61 gray.
- Hardware is included to fasten mounting feet to the enclosure.



SCE-N3RMFK4

Enviroline Mounting Feet			
Part Number	Price	Material	Qty
<b>SCE-ELMFK4</b>	\$18.00	Chemical and Corrosion resistant Polyamide	4
<b>SCE-ELMFK6</b>	\$24.50		6
<b>SCE-ELMFK4-25</b>	\$354.00		100
<b>SCE-ELMFK4SS6-OS</b>	\$55.00	stainless steel	4

- Made for use with all SCE Enviroline® Series enclosures and two-door wall-mount enclosures.
- For use in type 3, 3R, 4, 4X and 12 enclosures.



SCE-ELMFK4

Enviroline Junction Mounting Feet			
Part Number	Price	Material	Qty
<b>SCE-ELJMFK</b>	\$24.00	Chemical and Corrosion resistant Polyamide	4
<b>SCE-ELJMFKSS-OS</b>	\$50.00	stainless steel	4

Made for use with all SCE Enviroline® Series junction enclosures.

- Stainless steel fasteners.
- Hardware is included to fasten mounting feet to the enclosure.



SCE-ELJMFK

Designed to attach to the bottom of the enclosure in the existing threaded holes. Allows for adjustments for uneven floors. Pads are zinc plated with a plastic base. Mounting hardware is included.



Workstation Leveling Pads					
Part Number	Price	Thread Size	Height	Qty	Drawing Link
<b>SCE-LPD2</b>	\$38.00	3/8-16	2 [51]	4	PDF
<i>Note: Dimensions in inches [millimeters].</i>					

# Enclosure Accessories



Your Enclosure Source®

## Mounting Feet

Designed for use with freestanding type enclosures when the enclosure must be secured to a concrete floor or base.

- Two angle iron-mounting feet per kit.
- Made of heavy gauge carbon steel powder coated ANSI 61 gray.
- Mounting hardware is included to fasten feet to the enclosure.
- Provided with UL Recognized sealing washer to maintain environmental rating of the enclosure.



SCE-XMAIMF24

Freestanding Enclosure Mounting Feet			
Part Number	Price	For Enclosure Depth	Drawing Link
<b>SCE-XMAIMF16</b>	\$36.00	16in	<a href="#">PDF</a>
<b>SCE-XMAIMF18</b>	\$39.00	18in	<a href="#">PDF</a>
<b>SCE-XMAIMF20</b>	\$43.50	20in	<a href="#">PDF</a>
<b>SCE-XMAIMF24</b>	\$52.00	24in	<a href="#">PDF</a>

Shipping Schedule	
Same day	1 - 15 days
Color indicates shipping lead time in business days.	

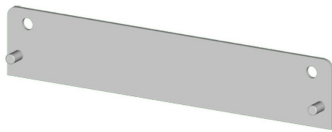
# Enclosure Accessories



Your Enclosure Source®

## Mounting Flanges

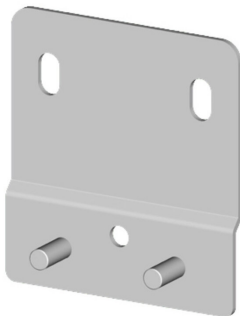
- Made of heavy gauge carbon steel, powder coated ANSI 61 gray.
- Vented 3R mounting flanges are white powder coat.
- Two mounting flanges per kit.
- Fastening hardware is included to attach flanges to the enclosure.
- Provided with UL Recognized sealing washer to maintain environmental rating of the enclosure.



SCE-NMST10

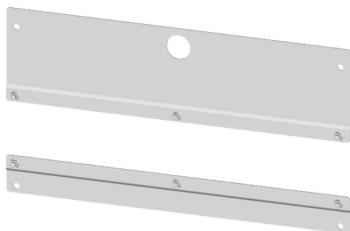
NEMA 1 Enclosure Mounting Flanges			
Part Number	Price	Enclosure Width	Drawing Link
SCE-NMST6	\$16.25	6 in wide NEMA 1 enclosures	PDF
SCE-NMST8	\$17.50	8 in wide NEMA 1 enclosures	PDF
SCE-NMST10	\$18.50	10 in wide NEMA 1 enclosures	PDF
SCE-NMST12	\$19.75	12 in wide NEMA 1 enclosures	PDF
SCE-NMST16	\$22.00	16 in wide NEMA 1 enclosures	PDF
SCE-NMST20	\$24.00	20 in wide NEMA 1 enclosures	PDF
SCE-NMST24	\$26.00	24 in wide NEMA 1 enclosures	PDF

Shipping Schedule	
Same day	1 - 15 days
Color indicates shipping lead time in business days.	



SCE-MST4

NEMA 3R Enclosure Mounting Flanges			
Part Number	Price	Enclosure Width	Drawing Link
SCE-MST4	\$17.50	4 in wide NEMA 3R enclosures	PDF
SCE-MST6	\$18.50	6 in wide NEMA 3R enclosures	PDF
SCE-MST8	\$19.75	8 in wide NEMA 3R enclosures	PDF
SCE-MST10	\$20.50	10 in wide NEMA 3R enclosures	PDF
SCE-MST12	\$22.00	12 in wide NEMA 3R enclosures	PDF
SCE-MST16	\$24.00	16 in wide NEMA 3R enclosures	PDF
SCE-MST20	\$26.00	20 in wide NEMA 3R enclosures	PDF
SCE-MST24	\$28.50	24 in wide NEMA 3R enclosures	PDF



SCE-VRMS36

NEMA 3R Vented Enclosure Mounting Flanges			
Part Number	Price	Enclosure Width	Drawing Link
SCE-VRMS24	\$43.50	24 in wide NEMA 3R vented enclosures	PDF
SCE-VRMS36	\$54.00	36 in wide NEMA 3R vented enclosures	PDF

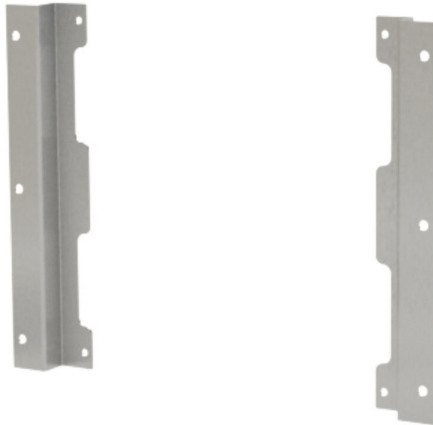
# Enclosure Accessories



Your Enclosure Source®

## Enviroline Flush-Mounting Frames

Flush-mounting frames are designed for use with the Enviroline® Series wall-mount enclosures, quickly converting the wall-mount enclosure to a flush-mount enclosure. Two part numbers are required to complete the assembly: one part number for the height of the enclosure and one part number for the width of the enclosure. All kits are provided with hardware to assemble the frame to the enclosure and maintain the environmental rating of the enclosure.



SCE-ELFM12HSS

### Material

- Frame is made of heavy gauge steel and finished with ANSI 61 gray powder coat.
- “SS” parts are made of heavy gauge Type 316/316L stainless steel with #4 brushed finish.

Shipping Schedule	
Same day	1 - 15 days
Color indicates shipping lead time in business days.	

Enviroline Flush-Mounting Frames						
Carbon Steel	Price	316 Stainless Steel	Price	For Enclosure Height	For Enclosure Width	Drawing Link
<a href="#">SCE-ELFM12H</a>	\$52.00	<a href="#">SCE-ELFM12HSS</a>	\$126.00	12 [305]	—	<a href="#">PDF</a>
<a href="#">SCE-ELFM16H</a>	\$56.00	<a href="#">SCE-ELFM16HSS</a>	\$134.00	16 [406]	—	<a href="#">PDF</a>
<a href="#">SCE-ELFM20H</a>	\$58.00	<a href="#">SCE-ELFM20HSS</a>	\$140.00	20 [508]	—	<a href="#">PDF</a>
<a href="#">SCE-ELFM24H</a>	\$62.00	<a href="#">SCE-ELFM24HSS</a>	\$150.00	24 [607]	—	<a href="#">PDF</a>
<a href="#">SCE-ELFM30H</a>	\$66.00	<a href="#">SCE-ELFM30HSS</a>	\$160.00	30 [762]	—	<a href="#">PDF</a>
<a href="#">SCE-ELFM36H</a>	\$72.00	<a href="#">SCE-ELFM36HSS</a>	\$172.00	36 [914]	—	<a href="#">PDF</a>
<a href="#">SCE-ELFM12W</a>	\$48.00	<a href="#">SCE-ELFM12WSS</a>	\$116.00	—	12 [305]	<a href="#">PDF</a>
<a href="#">SCE-ELFM16W</a>	\$52.00	<a href="#">SCE-ELFM16WSS</a>	\$124.00	—	16 [406]	<a href="#">PDF</a>
<a href="#">SCE-ELFM20W</a>	\$54.00	<a href="#">SCE-ELFM20WSS</a>	\$130.00	—	20 [508]	<a href="#">PDF</a>
<a href="#">SCE-ELFM24W</a>	\$58.00	<a href="#">SCE-ELFM24WSS</a>	\$140.00	—	24 [607]	<a href="#">PDF</a>
<a href="#">SCE-ELFM30W</a>	\$62.00	<a href="#">SCE-ELFM30WSS</a>	\$149.00	—	30 [762]	<a href="#">PDF</a>
<a href="#">SCE-ELFM36W</a>	\$68.00	<a href="#">SCE-ELFM36WSS</a>	\$162.00	—	36 [914]	<a href="#">PDF</a>

Note: Dimensions in inches [millimeters].

# Enclosure Accessories



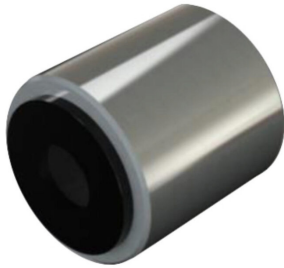
Your Enclosure Source®

## Shipping Schedule

Same day	1 - 15 days
----------	-------------

Color indicates shipping lead time in business days.

## Wall-Mount Standoffs



**SCE-WMS1SS**

Wall-mount standoffs are intended to provide space between a wall-mount enclosure and the wall for better wash down accessibility that is required in some applications. Provided with silicone seals to maintain seal between standoff and mounting surfaces. Maintains Type 4X rating. Four 304 stainless steel standoffs and eight silicone seals per kit.

Standoffs			
Part Number	Price	Length	Drawing Link
<b>SCE-WMS1SS</b>	\$109.00	1 [25]	<a href="#">PDF</a>
<b>SCE-WMS2SS</b>	\$118.00	2 [51]	<a href="#">PDF</a>
<b>SCE-WMS3SS</b>	\$134.00	3 [76]	<a href="#">PDF</a>
<b>SCE-WMS4SS</b>	\$162.00	4 [102]	<a href="#">PDF</a>

*Note: Dimensions in inches (millimeters).*

## Lifting Lugs



**SCE-LLB5**

Lifting lugs are designed to be mounted to the left and right side of a standard wall-mount type enclosure for easy handling of fully-wired enclosures. Mounting hardware is included. UL recognized sealing washers supplied to maintain UL ratings of Type 3R, 4, 4X and 12.

Lifting Lugs			
Part Number	Price	Material/Finish	Qty
<b>SCE-LLB5SS</b>	\$41.00	316 Stainless Steel, #4 Brush Finish	2
<b>SCE-LLB7</b>	\$31.00	Steel, White Powder Coat	2
<b>SCE-LLB5</b>	\$27.00	Steel, Zinc Plated	2
<b>SCE-LLB5-25</b>	\$526.00	Steel, Zinc Plated	25 sets of 2

# Enclosure Accessories

## Casters



Your Enclosure Source®

- Swivel casters have ball bearing pivots and brakes.
- Load rating 250 lbs for each caster.



**SCE-CAKR**

Shipping Schedule	
Same day	1 - 15 days
Color indicates shipping lead time in business days.	

Casters			
Part Number	Price	Description	Wheel Size
<b>SCE-CAKR</b>	\$112.00	Set of 4 - 2 Rigid, 2 Swivel	3in
<b>SCE-CAKS</b>	\$140.00	Set of 4 Swivel Casters	3in
<b>SCE-CAKR4</b>	\$168.00	Set of 4 - 2 Rigid, 2 Swivel	4in
<b>SCE-CAKS4</b>	\$196.00	Set of 4 Swivel Casters	4in

# Enclosure Accessories

## Drip Shields



Your Enclosure Source®

Shipping Schedule	
Same day	1 - 15 days
Color indicates shipping lead time in business days.	



Drip Shields for NEMA 4 and 12 Enclosures				
RAL 7035	Price	ANSI 61	Price	Fits Enclosure Width
<b>SCE-DS12N4</b>	\$36.50	<b>SCE-DS12N4LG</b>	\$36.50	12 in
<b>SCE-DS16N4</b>	\$42.00	<b>SCE-DS16N4LG</b>	\$42.00	16 in
<b>SCE-DS20N4</b>	\$44.50	<b>SCE-DS20N4LG</b>	\$44.50	20 in
<b>SCE-DS24N4</b>	\$52.00	<b>SCE-DS24N4LG</b>	\$52.00	24 in
<b>SCE-DS30N4</b>	\$54.00	<b>SCE-DS30N4LG</b>	\$54.00	30 in
<b>SCE-DS36N4</b>	\$58.00	<b>SCE-DS36N4LG</b>	\$58.00	36 in
<b>SCE-DS42N4</b>	\$62.00	—	—	42 in
<b>SCE-DS48N4</b>	\$70.00	—	—	48 in
<b>SCE-DS60N4</b>	\$82.00	—	—	60 in
<b>SCE-DS72N4</b>	\$93.00	—	—	72 in

Protects door against dripping water and settling dust. Stainless steel screws and sealing washers are supplied with each kit. Made of steel and powder coated. Provided with cULus Recognized sealing washer to maintain Environmental Rating of the enclosure.

Stainless Steel Drip Shields for NEMA 4X Enclosures				
304 Stainless Steel	Price	316L Stainless Steel	Price	Fits Enclosure Width
<b>SCE-DS12SS</b>	\$84.00	<b>SCE-DS12SS6</b>	\$101.00	12 in
<b>SCE-DS16SS</b>	\$92.00	<b>SCE-DS16SS6</b>	\$110.00	16 in
<b>SCE-DS20SS</b>	\$99.00	<b>SCE-DS20SS6</b>	\$119.00	20 in
<b>SCE-DS24SS</b>	\$107.00	<b>SCE-DS24SS6</b>	\$128.00	24 in
<b>SCE-DS30SS</b>	\$119.00	<b>SCE-DS30SS6</b>	\$143.00	30 in
<b>SCE-DS36SS</b>	\$132.00	<b>SCE-DS36SS6</b>	\$159.00	36 in
<b>SCE-DS42SS</b>	\$145.00	<b>SCE-DS42SS6</b>	\$174.00	42 in
<b>SCE-DS48SS</b>	\$163.00	<b>SCE-DS48SS6</b>	\$195.00	48 in
<b>SCE-DS60SS</b>	\$186.00	<b>SCE-DS60SS6</b>	\$223.00	60 in
<b>SCE-DS72SS</b>	\$221.00	<b>SCE-DS72SS6</b>	\$265.00	72 in

Protects door against dripping water and settling dust. Stainless steel screws and sealing washers are supplied with each kit. Made of type 304 or 316 stainless steel. Provided with cULus Recognized sealing washer to maintain Environmental Rating of the enclosure.