

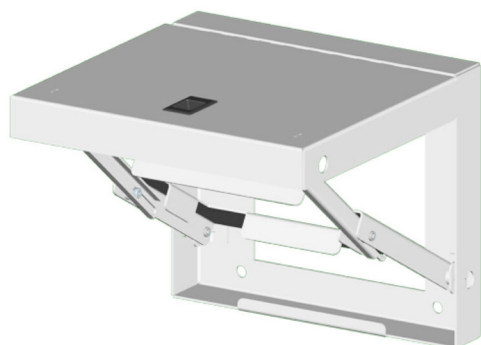
Enclosure Accessories

Folding Shelves



Your Enclosure Source®

Shipping Schedule	
Same day	1 - 15 days
Color indicates shipping lead time in business days.	



Folding shelves can be installed on the inside or outside of large enclosures. They are designed to support test and programming equipment. Locks in the horizontal position. When not in use, shelf can be folded down. Made of heavy gauge steel and powder coated. "SS" parts are stainless steel type 304 with a #4 brush finish. Provided with cULus Recognized sealing washer to maintain environmental rating of the enclosure.

Folding Shelves							
White	RAL 7035	Price	ANSI 61	Price	304 Stainless Steel	Price	Work Surface
SCE-FS1212	SCE-FS1212LG	\$150.00	SCE-FS1818-09	\$188.00	SCE-FS1212SS	\$428.00	12 x 12 [305 x 305]
SCE-FS1218	SCE-FS1818LG	\$188.00	SCE-FS1212-09	\$150.00	SCE-FS1818SS	\$487.00	12 x 18 [305 x 457]
SCE-FS1818	—	—	SCE-FS2424-09	\$226.00	SCE-FS2424SS	\$508.00	18 x 18 [457 x 457]
SCE-FS2424	—	\$226.00	—	—	—	—	24 x 24 [610 x 610]

Note: Dimensions in inches [millimeters]