

# RSCG Series NEMA 3R Wiring Trough



## Applications

These enclosures are designed to protect wiring against rain, sleet and snow in outdoor installations, or indoors against dripping water.

## Construction

- Trough and cover fabricated from 16 gauge carbon steel
- Drip shield top and smooth seamless sides, front and back, prevent rain, snow and sleet from entering the enclosure
- Embossed mounting holes are conveniently located on the back
- A slip-on removable cover is securely fastened with screws located along the bottom edge
- Knockouts are provided on bottom of enclosure

## Finish

- ANSI-61 gray polyester powder inside and out over phosphatized surfaces

## Listings

- UL 870
- UL File E32576
- CSA File LL66078
- Meets NEMA/EEMAC Types, 1 & 3R requirements

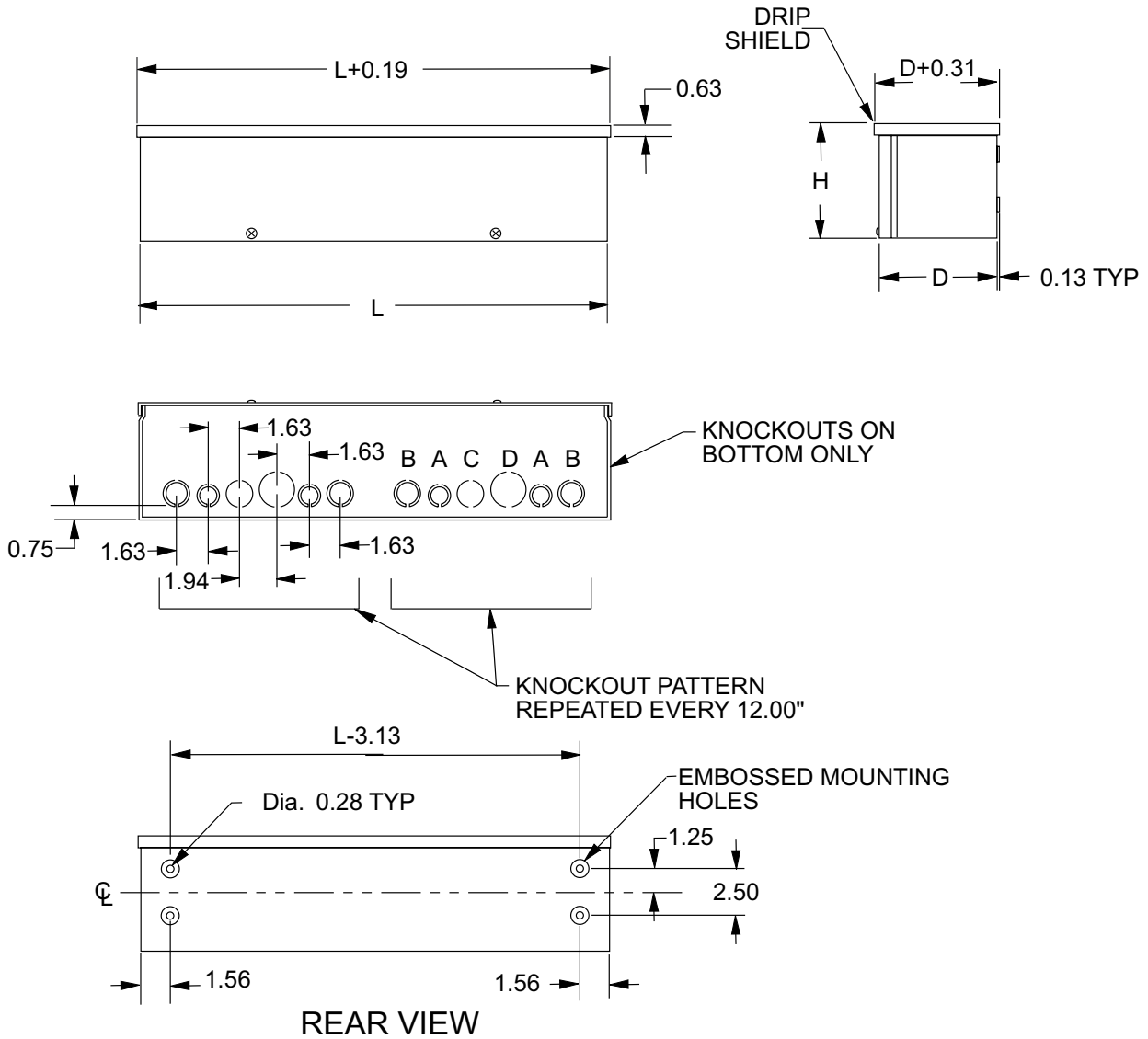
Enclosure Shipping Schedule		
Same day	1 - 7 days	1 -10 days

Color indicates shipping lead time in business days.

Part Number	Price	Body/Door Steel Gauge	Enclosure Size HxDxL	Knockout Pattern
<b>RSCG040412</b>	\$47.50	16/16	4.06 x 4.06 x 12.13 (103 x 103 x 308)	B-A-C-D-A-B repeated
<b>RSCG040424</b>	\$67.00	16/16	4.06 x 4.06 x 24.13 (103 x 103 x 613)	B-A-C-D-A-B repeated
<b>RSCG040436</b>	\$87.00	16/16	4.06 x 4.06 x 36.13 (103 x 103 x 918)	B-A-C-D-A-B repeated
<b>RSCG040448</b>	\$107.00	16/16	4.06 x 4.06 x 48.13 (103 x 103 x 1222)	B-A-C-D-A-B repeated
<b>RSCG040460</b>	\$127.00	16/16	4.06 x 4.06 x 60.13 (103 x 103 x 1527)	B-A-C-D-A-B repeated
<b>RSCG060612</b>	\$59.00	16/16	6.06 x 6.06 x 12.13 (154 x 154 x 308)	B-A-C-D-A-B repeated
<b>RSCG060624</b>	\$91.00	16/16	6.06 x 6.06 x 24.13 (154 x 154 x 613)	B-A-C-D-A-B repeated
<b>RSCG060636</b>	\$122.00	16/16	6.06 x 6.06 x 36.13 (154 x 154 x 918)	B-A-C-D-A-B repeated
<b>RSCG060648</b>	\$151.00	16/16	6.06 x 6.06 x 48.13 (154 x 154 x 1222)	B-A-C-D-A-B repeated
<b>RSCG060660</b>	\$181.00	16/16	6.06 x 6.06 x 60.13 (154 x 154 x 1527)	B-A-C-D-A-B repeated
<b>RSCG060672</b>	\$211.00	16/16	6.06 x 6.06 x 72.13 (154 x 154 x 1832)	B-A-C-D-A-B repeated
<b>RSCG080824</b>	\$123.00	16/16	8.06 x 8.06 x 24.13 (205 x 205 x 613)	B-A-C-D-A-B repeated
<b>RSCG080836</b>	\$164.00	16/16	8.06 x 8.06 x 36.13 (205 x 205 x 918)	B-A-C-D-A-B repeated
<b>RSCG080848</b>	\$205.00	16/16	8.06 x 8.06 x 48.13 (205 x 205 x 1222)	B-A-C-D-A-B repeated
<b>RSCG080860</b>	\$247.00	16/16	8.06 x 8.06 x 60.13 (205 x 205 x 1527)	B-A-C-D-A-B repeated
<b>RSCG080872</b>	\$323.00	16/16	8.06 x 8.06 x 72.13 (205 x 205 x 1832)	B-A-C-D-A-B repeated

**Note:** Dimensions in inches (millimeters).  
Letters in table correspond to letters on dimensional drawings.

# RSCG Series NEMA 3R Wiring Trough



## KNOCKOUT SIZES

- B = 3/4" x 1" CONCENTRIC KO
- A = 1/2" x 3/4" CONCENTRIC KO
- C = 1" SOLID KO
- D = 1-1/4" SOLID KO

**G19RSCG**

Please see our website [www.AutomationDirect.com](http://www.AutomationDirect.com) for complete engineering drawings.