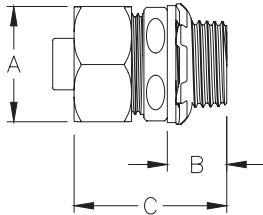
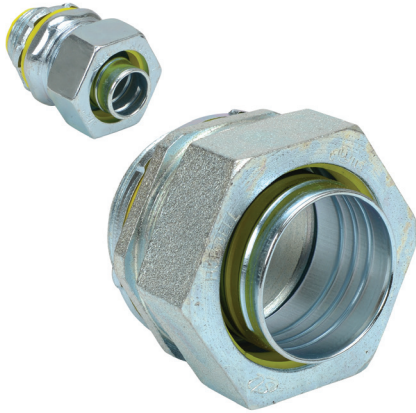


RACO[®] Liquid-Tight Connectors

Straight Connectors



Please see our website www.AutomationDirect.com for complete engineering drawings.

Applications

- For use in outdoor or indoor locations on flexible metallic liquid-tight conduit and Type B flexible non-metallic liquid-tight conduit
- Use to positively bond the conduit to a box or enclosure
- RACO[®] liquid-tight connectors are suitable for use in Class I, Div 2; Class II, Div 1 & 2; and Class III, Div 1 & 2 hazardous locations

Features

- Patented split gland-ring is designed to slip onto the conduit quickly and to grip the jacket of the conduit, speeding installation, assuring a perfect seal, and preventing pullouts
- All components are reusable. RACO[®] liquid-tight connectors may be easily disassembled and reused after years of service
- Included sealing washer provides a liquid-tight seal when terminating the connector in a threadless opening
- Heavy duty locknut included with every RACO[®] liquid-tight connector assures continuity of ground
- All steel/iron components are zinc-electroplated for added corrosion protection

Approvals

- Standard 514B, UL Listed E195969
- CSA Certificate 1456072



RACO Liquid-tight Straight Connectors

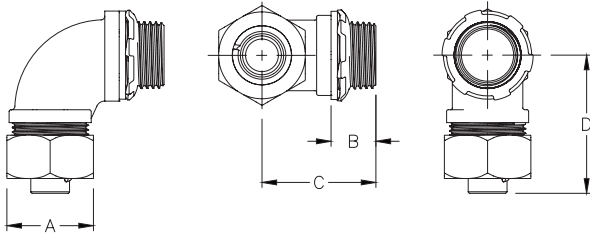
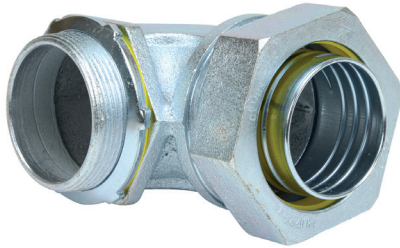
Connector Part #	Trade Size (in)	Insulated	Quantity	Price	Dimensions – Inches [mm]				Compression Nut & Body Material
					A	B	C	Thread	
3401-8	3/8	N	1	\$1.75	1.06 [26.92]	0.55 [13.97]	1.41 [35.81]	½ in – 14 NPT	Zinc electroplated steel nut and body
3401		N	50	\$79.00					
3511RAC		Y	25	\$45.00					
3402-8	1/2	N	1	\$1.75	1.17 [29.72]	0.54 [13.72]	1.56 [39.62]	½ in – 14 NPT	
3402		N	50	\$79.00					
3512-8		Y	1	\$2.25					
3512RAC	Y	50	\$89.00						
3403-8	3/4	N	1	\$2.50	1.40 [35.56]	0.58 [14.73]	1.47 [37.34]	¾ in – 14 NPT	
3403		N	25	\$59.00					
3513-8		Y	1	\$2.75					
3513RAC	Y	25	\$65.00						
3404-8	1	N	1	\$3.75	1.71 [43.43]	0.65 [16.51]	1.79 [45.47]	1 in – 11-½ NPT	
3404		N	10	\$35.00					
3514-8		Y	1	\$4.50					
3514RAC	Y	10	\$39.00						
3405-8	1-1/4	N	1	\$7.50	2.17 [55.12]	0.69 [17.53]	1.89 [48.01]	1¼ in – 11-½ NPT	Zinc electroplated malleable iron nut and body
3405		N	10	\$69.00					
3515RAC		Y	10	\$79.00					
3406-8	1-1/2	N	1	\$10.50	2.40 [60.96]	0.71 [18.03]	2.08 [52.83]	1½ in – 11-½ NPT	
3408-8	2	N	1	\$16.00	3.00 [76.20]	0.75 [19.05]	2.28 [57.91]	2 in – 11-½ NPT	

Note: Heavy-duty locknut on all models is zinc-plated steel

To obtain the most current agency approval information, see the Agency Approval Checklist section on the specific part number's web page at www.AutomationDirect.com

RACO® Liquid-Tight Connectors

90° Connectors



Please see our website www.AutomationDirect.com for complete engineering drawings.

Applications

- For use in outdoor or indoor locations on flexible metallic liquid-tight conduit and Type B flexible non-metallic liquid-tight conduit
- Use to positively bond the conduit to a box or enclosure
- RACO® liquid-tight connectors are suitable for use in Class I, Div 2; Class II, Div 1 & 2; and Class III, Div 1 & 2 hazardous locations

Features

- Patented split gland-ring is designed to slip onto the conduit quickly and to grip the jacket of the conduit, speeding installation, assuring a perfect seal, and preventing pullouts
- All components are reusable - RACO® liquid-tight connectors may be easily disassembled and reused after years of service
- Included sealing washer provides a liquid-tight seal when terminating the connector in a threadless opening
- Heavy duty locknut included with every RACO® liquid-tight connector assures continuity of ground
- All steel/iron components are zinc-electroplated for added corrosion protection

Approvals

- Standard 514B, UL Listed E195969
- CSA Certificate 1456072



RACO Liquid-tight 90° Connectors										
Connector Part #	Trade Size (in)	Insulated	Quantity	Price	Dimensions – Inches [mm]					Compression Nut & Body Material
					A	B	C	D	Thread	
3421-8	3/8	N	1	\$2.75	1.06 [26.92]	0.55 [13.97]	1.40 [35.56]	1.70 [43.18]	½ in – 14 NPT	Zinc electroplated steel nut and malleable iron body
3421		N	25	\$59.00						
3541RAC		Y	25	\$79.00						
3422-8	1/2	N	1	\$2.75	1.09 [27.69]	0.55 [13.97]	1.41 [35.81]	1.73 [43.94]	½ in – 14 NPT	
3422		N	25	\$59.00						
3542-8		Y	1	\$3.50						
3542		Y	25	\$79.00						
3423-8	3/4	N	1	\$4.50	1.30 [33.02]	0.59 [14.99]	1.61 [40.89]	2.02 [51.31]	¾ in – 14 NPT	
3423		N	25	\$99.00						
3543-8		Y	1	\$5.25						
3543		Y	25	\$119.00						
3424-8	1	N	1	\$9.00	1.58 [40.13]	0.65 [16.51]	1.92 [48.77]	2.31 [58.67]	1 in – 11-½ NPT	
3424		N	10	\$85.00						
3544-8		Y	1	\$9.75						
3544		Y	10	\$89.00						
3425-8	1-1/4	N	1	\$15.00	1.97 [50.04]	0.69 [17.53]	2.02 [51.31]	2.67 [67.82]	1-¼ in – 11-½ NPT	
3425		Y	10	\$139.00						
3545		Y	10	\$149.00						
3426-8	1-1/2	N	1	\$17.00	2.22 [56.39]	0.71 [18.03]	2.25 [57.15]	3.05 [77.47]	1-½ in – 11-½ NPT	Zinc electroplated malleable iron nut and body
3428-8	2	N	1	\$25.00	3.00 [76.20]	0.75 [19.05]	2.47 [62.74]	3.30 [83.82]	2 in – 11-½ NPT	

Note: Heavy-duty locknut on all models is zinc-plated steel

To obtain the most current agency approval information, see the Agency Approval Checklist section on the specific part number's web page at www.AutomationDirect.com